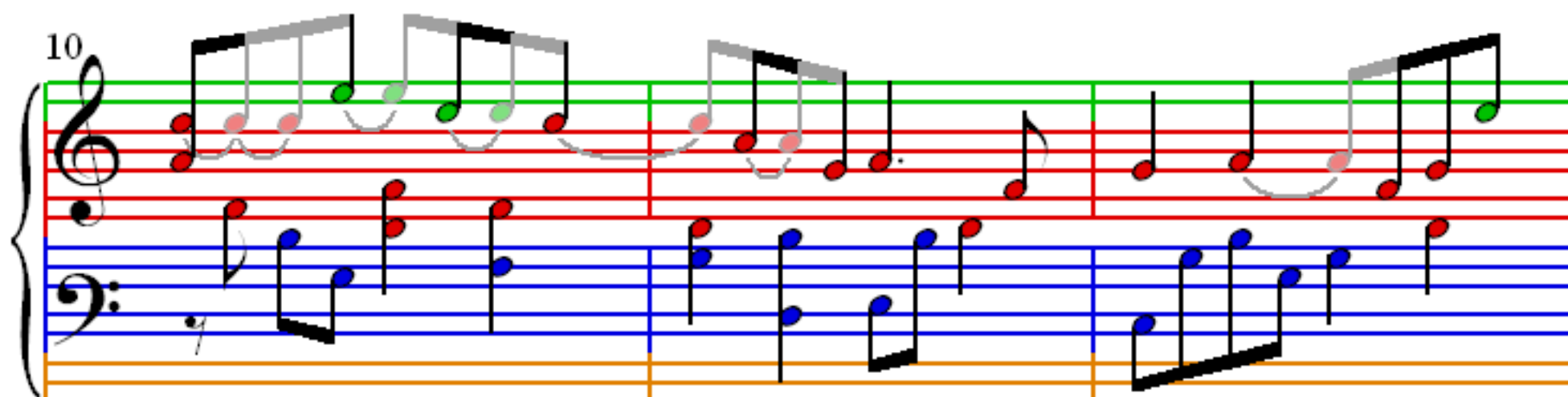
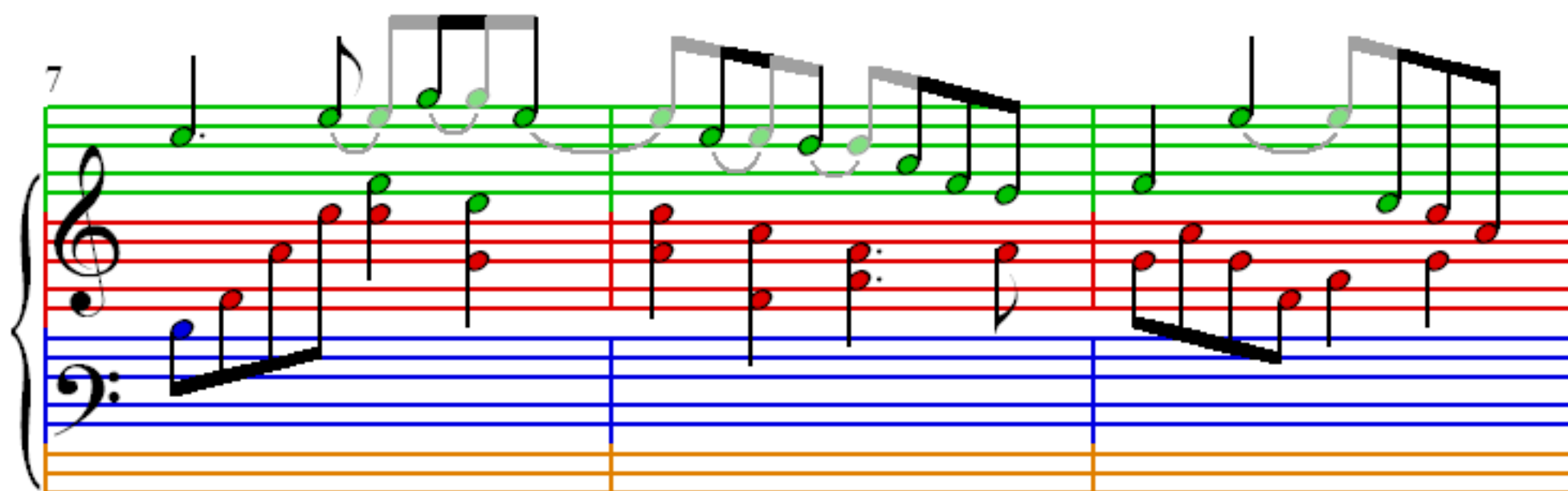
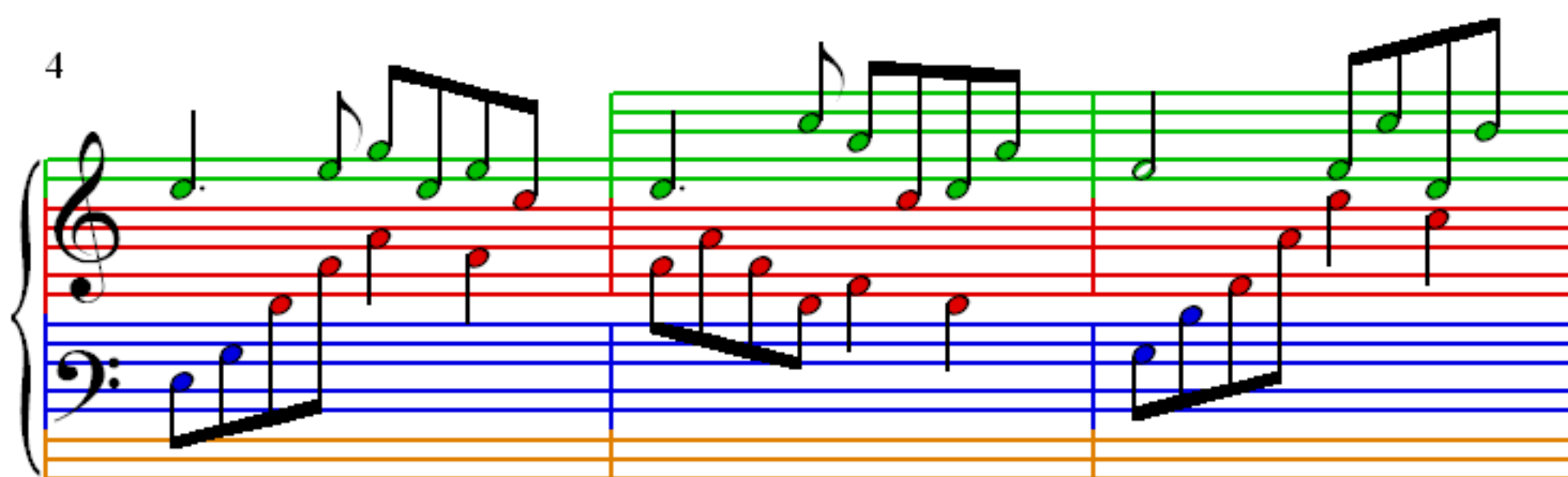
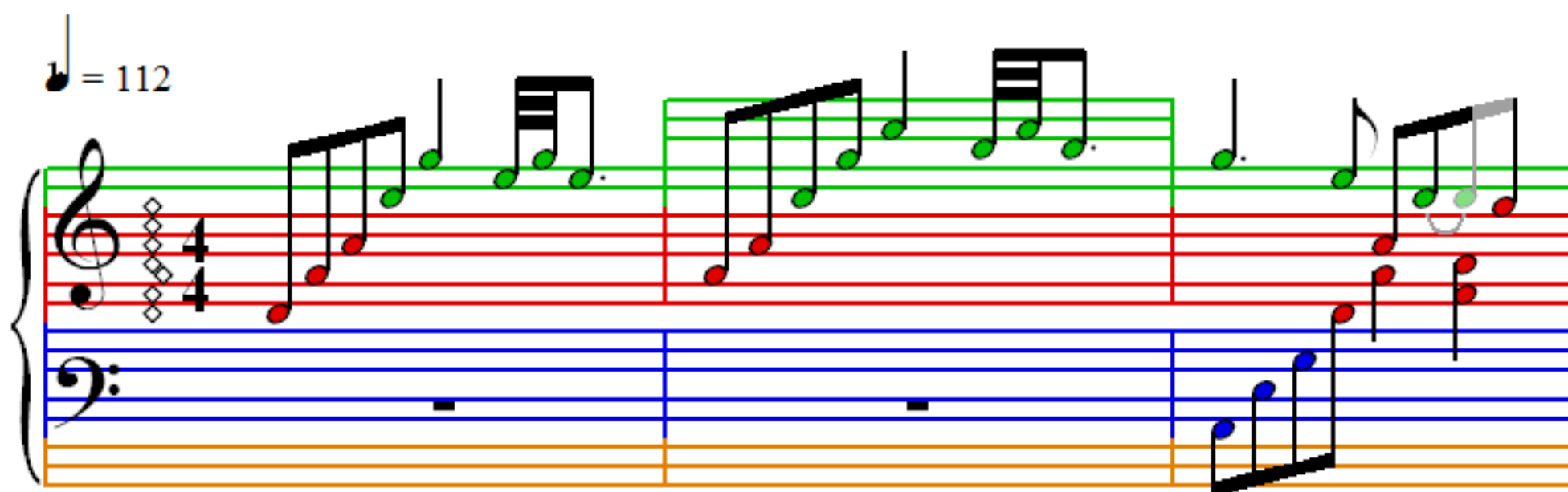


# Sonata in C Kp86

Scarlatti

$\text{♩} = 112$



13

Handwritten musical notation for measures 13, 14, and 15. The system consists of a grand staff with a treble clef and a bass clef. The treble staff has a green background, and the bass staff has a blue background. The notes are color-coded: red for the right hand and blue for the left hand. Measure 13 shows a sequence of eighth notes in the right hand and a descending eighth-note line in the left hand. Measure 14 continues the eighth-note patterns. Measure 15 features a half-note chord in the right hand and a descending eighth-note line in the left hand.

16

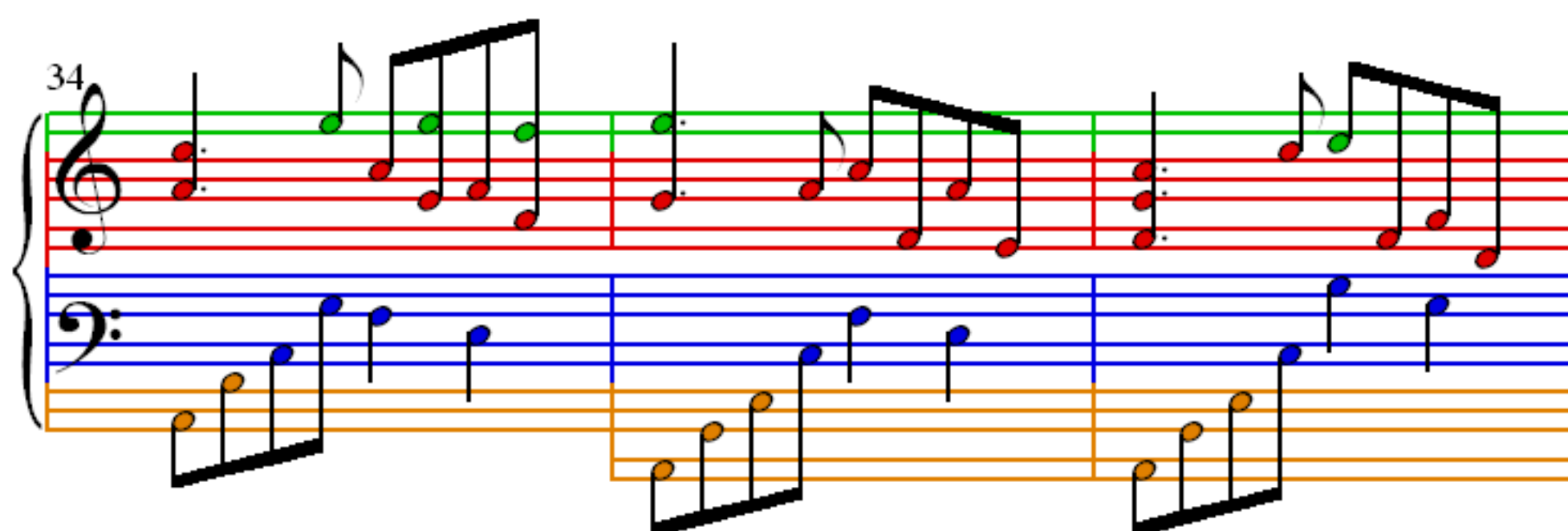
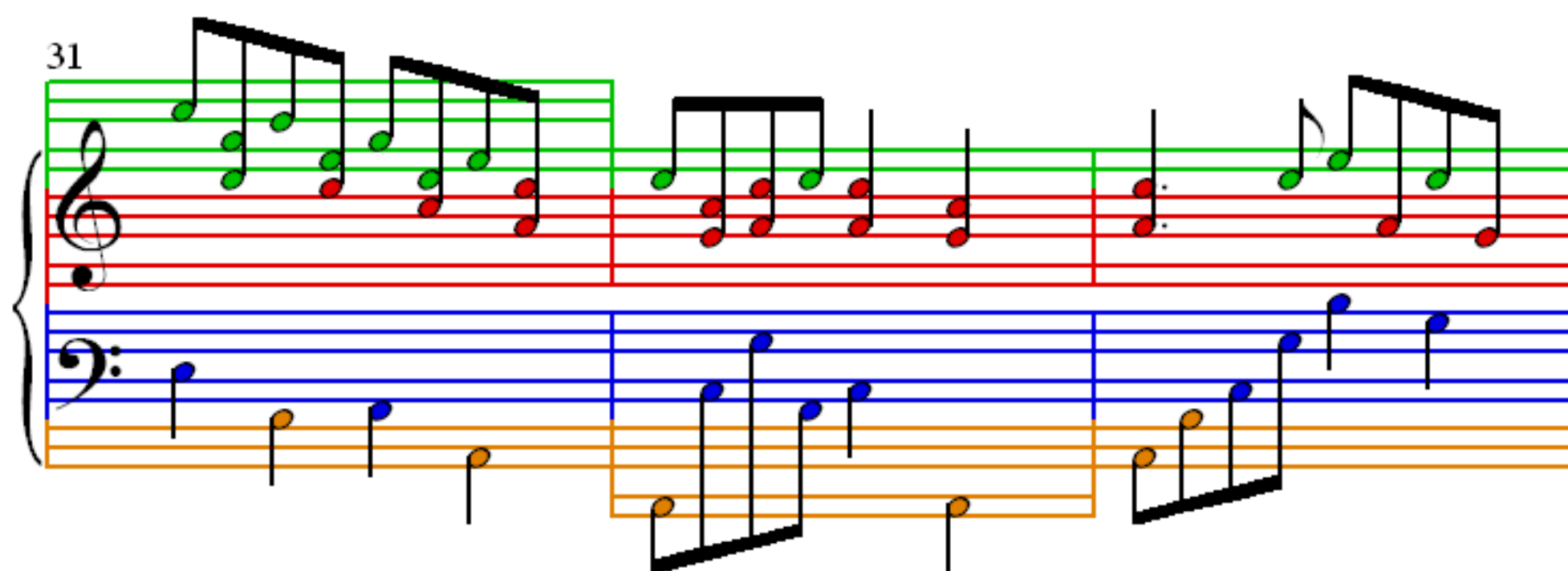
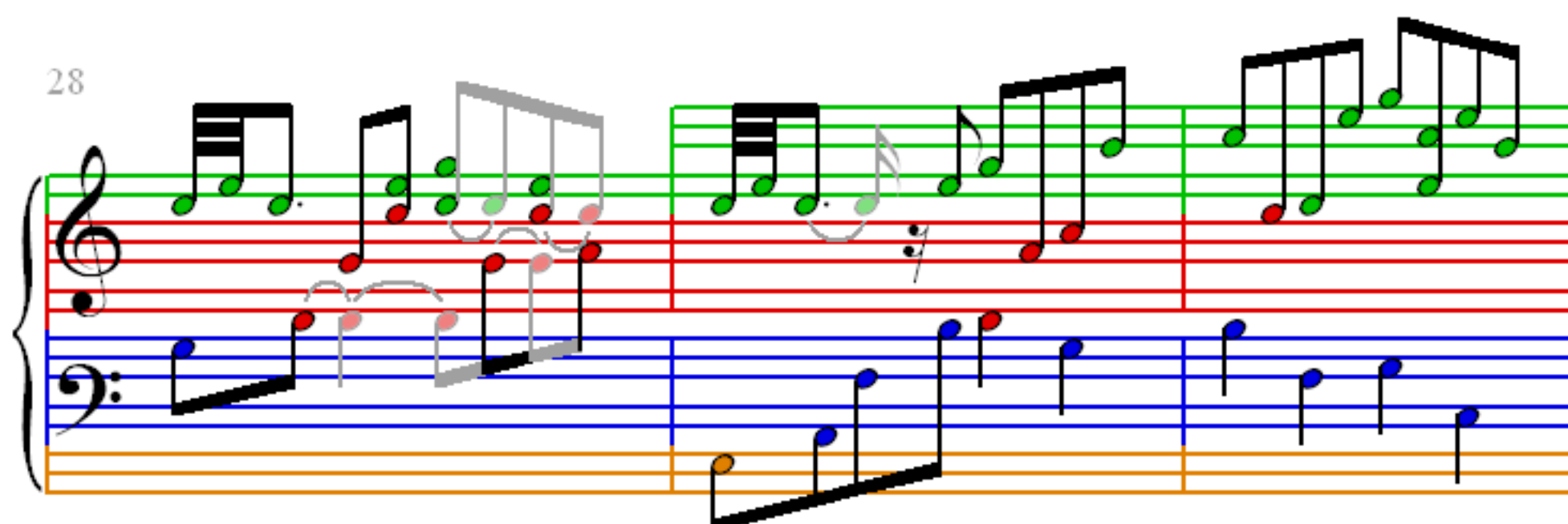
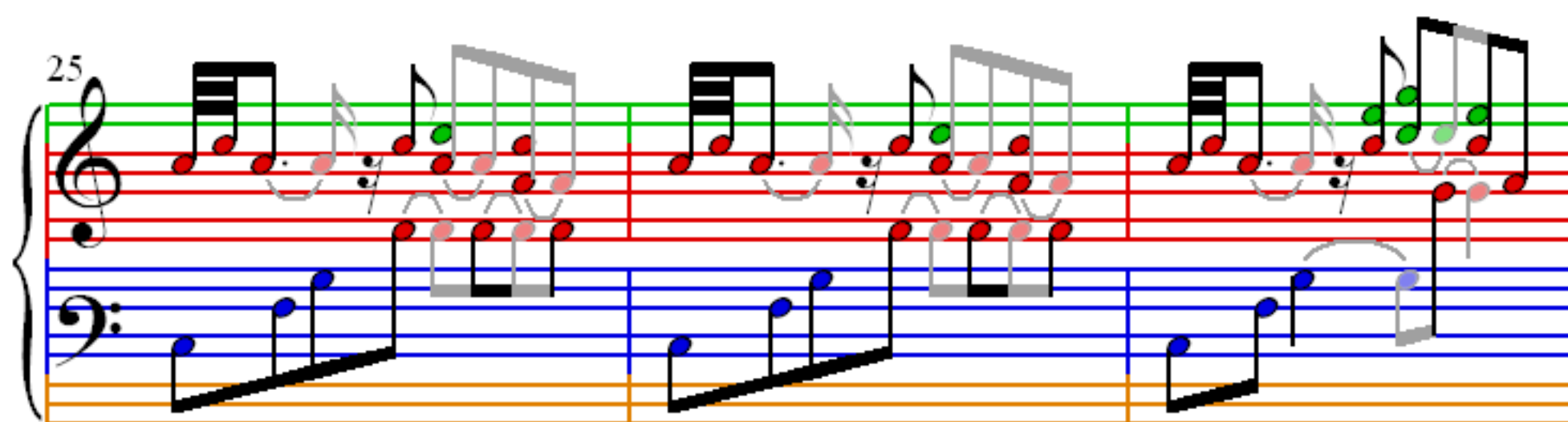
Handwritten musical notation for measures 16, 17, and 18. The system consists of a grand staff with a treble clef and a bass clef. The treble staff has a green background, and the bass staff has a blue background. The notes are color-coded: red for the right hand and blue for the left hand. Measure 16 shows a sequence of eighth notes in the right hand and a descending eighth-note line in the left hand. Measure 17 continues the eighth-note patterns. Measure 18 features a half-note chord in the right hand and a descending eighth-note line in the left hand.

19

Handwritten musical notation for measures 19, 20, and 21. The system consists of a grand staff with a treble clef and a bass clef. The treble staff has a green background, and the bass staff has a blue background. The notes are color-coded: red for the right hand and blue for the left hand. Measure 19 shows a sequence of eighth notes in the right hand and a descending eighth-note line in the left hand. Measure 20 continues the eighth-note patterns. Measure 21 features a half-note chord in the right hand and a descending eighth-note line in the left hand.

22

Handwritten musical notation for measures 22, 23, and 24. The system consists of a grand staff with a treble clef and a bass clef. The treble staff has a green background, and the bass staff has a blue background. The notes are color-coded: red for the right hand and blue for the left hand. Measure 22 shows a sequence of eighth notes in the right hand and a descending eighth-note line in the left hand. Measure 23 continues the eighth-note patterns. Measure 24 features a half-note chord in the right hand and a descending eighth-note line in the left hand.



37

This system contains measures 37, 38, and 39. The treble clef staff features a series of eighth-note chords, with some notes highlighted in green. The bass clef staff provides a harmonic foundation with a mix of eighth and sixteenth notes, including some notes highlighted in blue and orange.

40

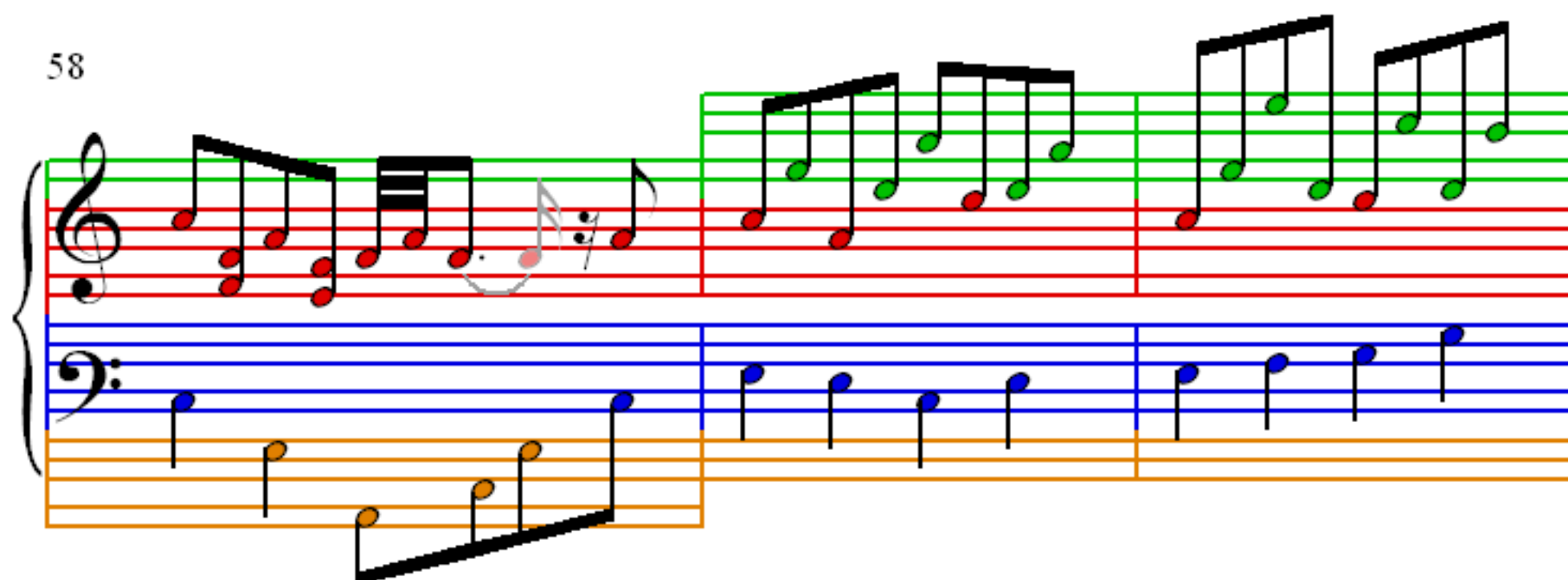
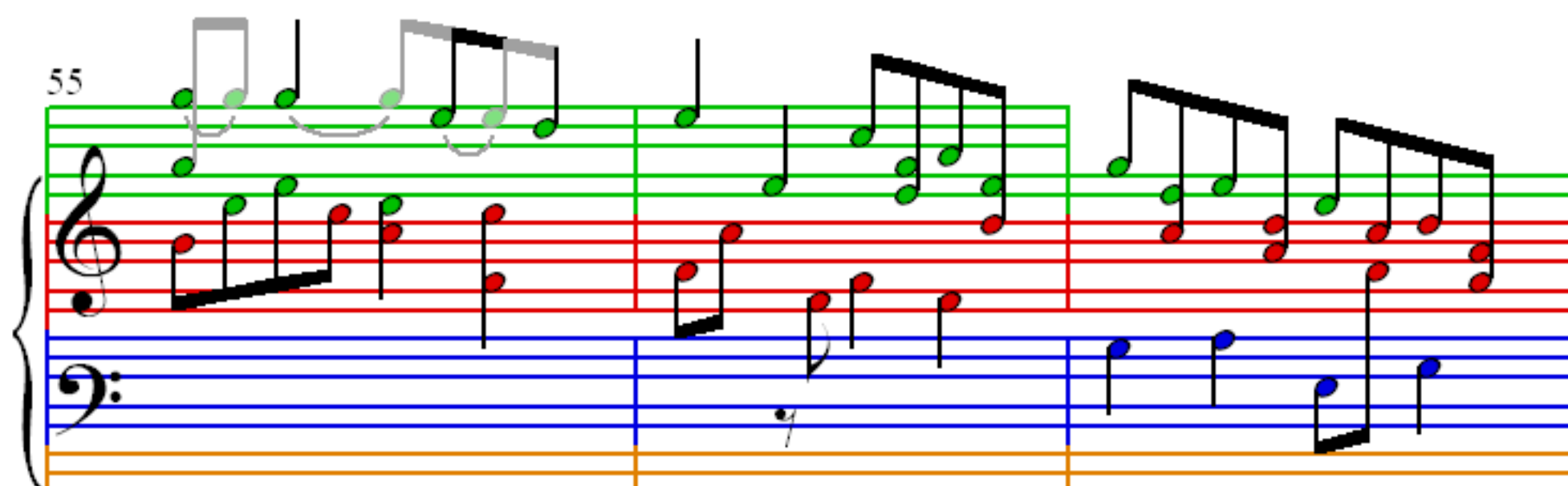
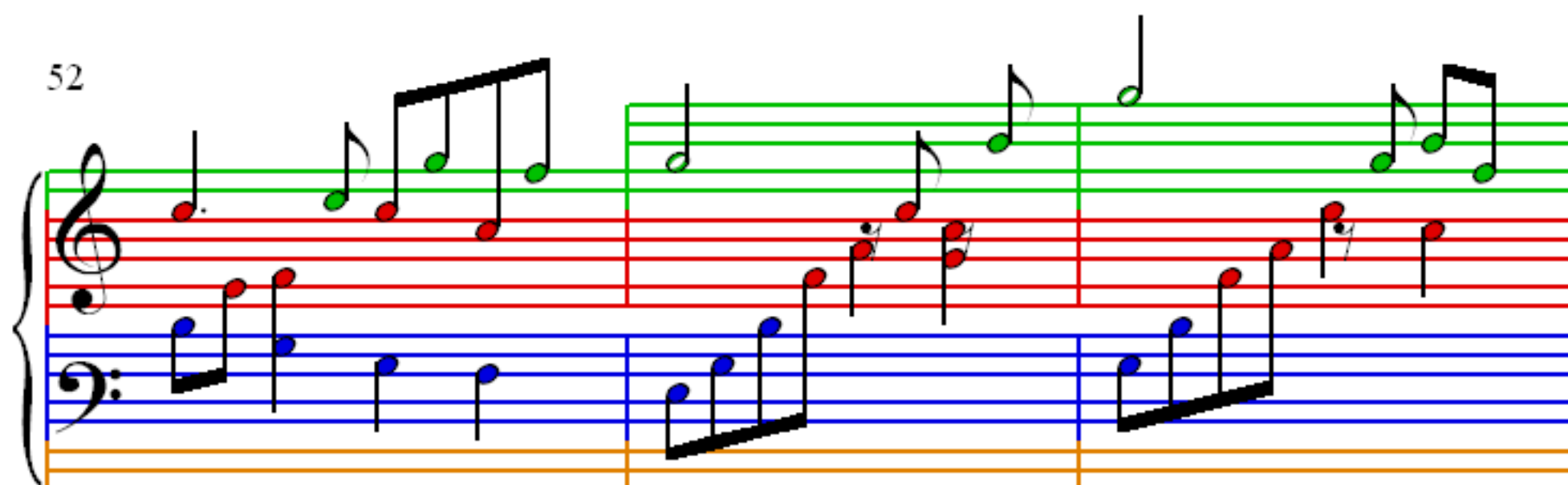
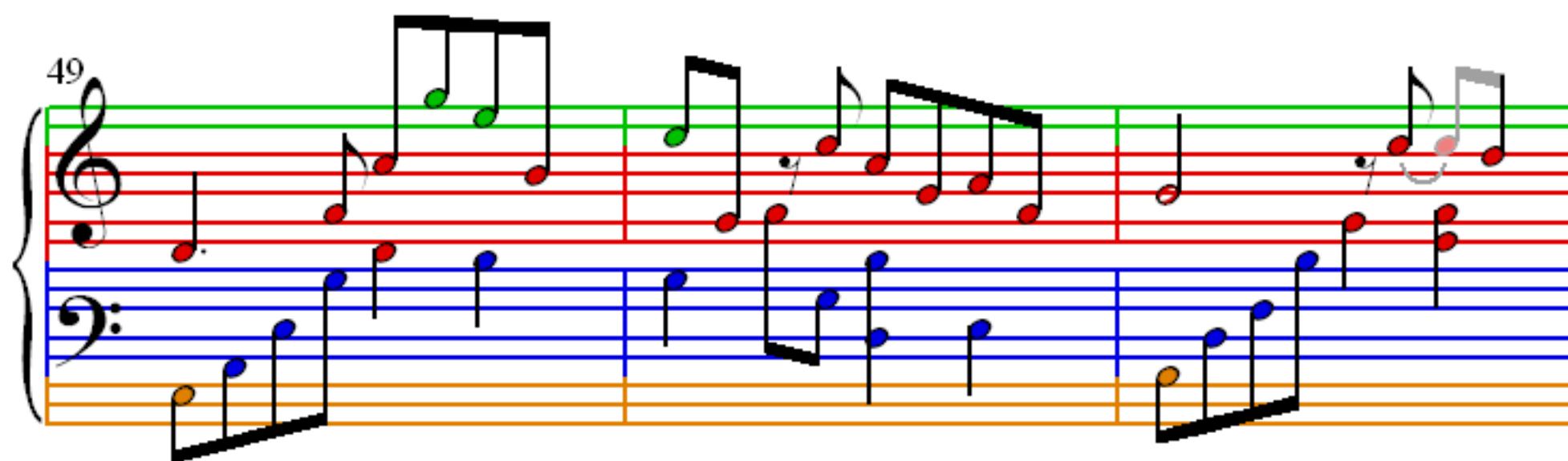
This system contains measures 40, 41, and 42. The treble clef staff continues with eighth-note chords, some in green. The bass clef staff features a steady eighth-note accompaniment, with some notes in blue and orange.

43

This system contains measures 43, 44, and 45. Measure 43 shows a transition with a half note in the bass clef. Measures 44 and 45 feature more complex rhythmic patterns in the treble clef, including sixteenth notes, and a half note in the bass clef.

46

This system contains measures 46, 47, and 48. The treble clef staff has eighth-note chords, some in green. The bass clef staff has a mix of eighth and sixteenth notes, with some notes in blue and orange.



61

64

67

70

73

Measures 73-75. Treble clef: Measure 73 has a half note G4 (green) and a half note F#4 (red) with a slur. Measure 74 has a half note E4 (green) and a half note D4 (red) with a slur. Measure 75 has a half note C4 (green) and a half note B3 (red). Bass clef: Measure 73 has a half note G3 (blue) and a half note F#3 (orange). Measure 74 has a half note E3 (blue) and a half note D3 (orange). Measure 75 has a half note C3 (blue) and a half note B2 (orange).

76

Measures 76-78. Treble clef: Measure 76 has a half note G4 (green) and a half note F#4 (red) with a slur. Measure 77 has a half note E4 (green) and a half note D4 (red) with a slur. Measure 78 has a half note C4 (green) and a half note B3 (red). Bass clef: Measure 76 has a half note G3 (blue) and a half note F#3 (orange). Measure 77 has a half note E3 (blue) and a half note D3 (orange). Measure 78 has a half note C3 (blue) and a half note B2 (orange).

79

Measures 79-81. Treble clef: Measure 79 has a half note G4 (green) and a half note F#4 (red) with a slur. Measure 80 has a half note E4 (green) and a half note D4 (red) with a slur. Measure 81 has a half note C4 (green) and a half note B3 (red). Bass clef: Measure 79 has a half note G3 (blue) and a half note F#3 (orange). Measure 80 has a half note E3 (blue) and a half note D3 (orange). Measure 81 has a half note C3 (blue) and a half note B2 (orange).