


Love is Blue

Richard Clayderman

 = 120

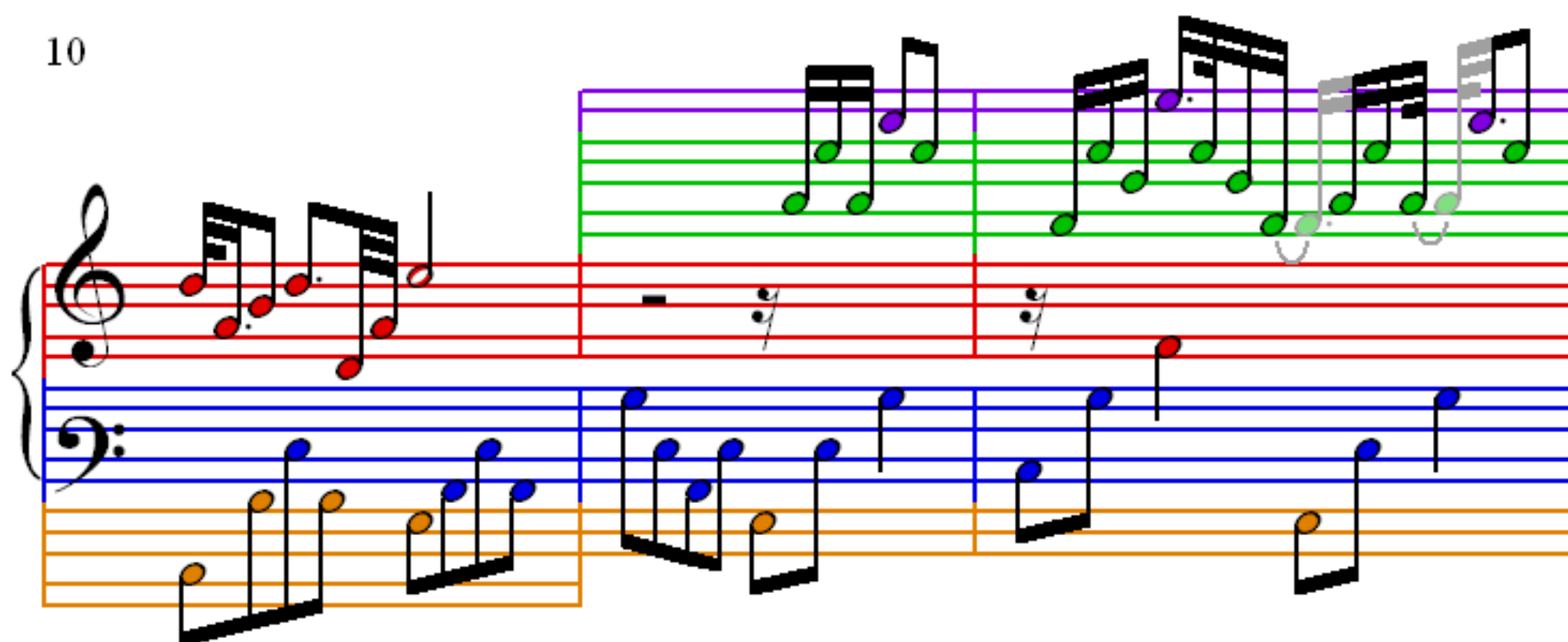
1



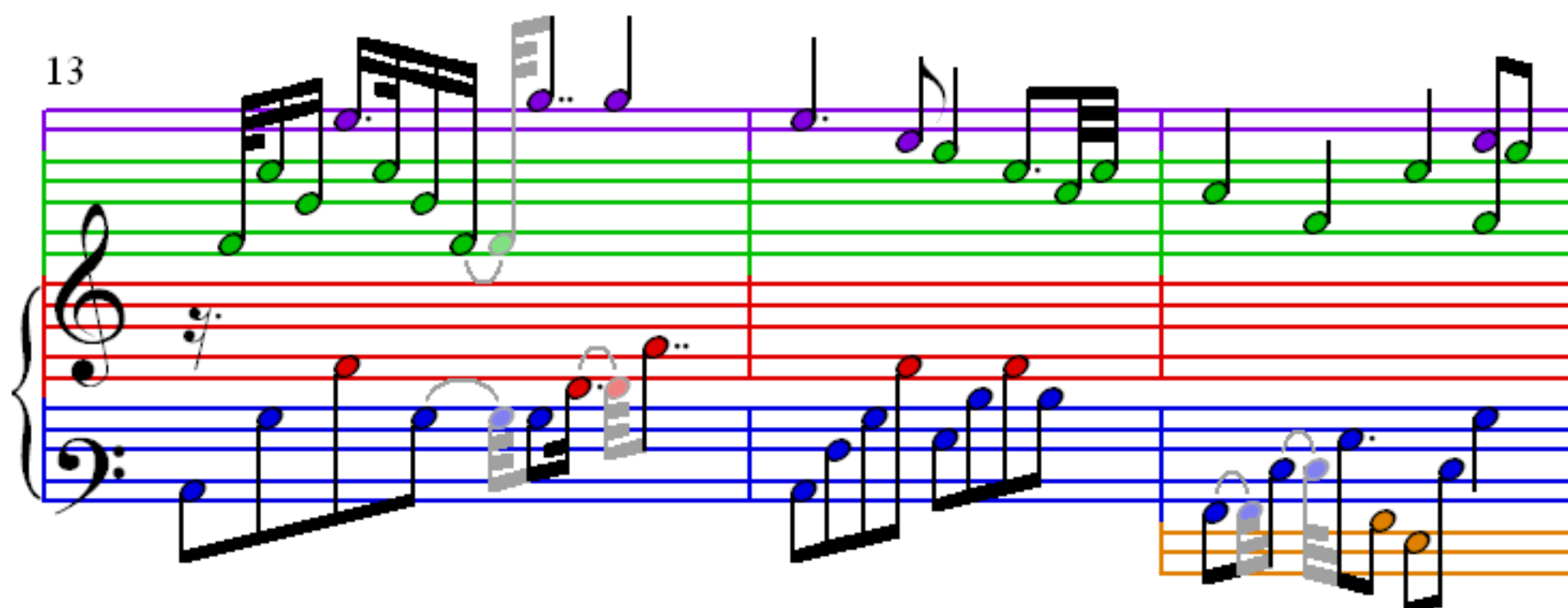
4

7

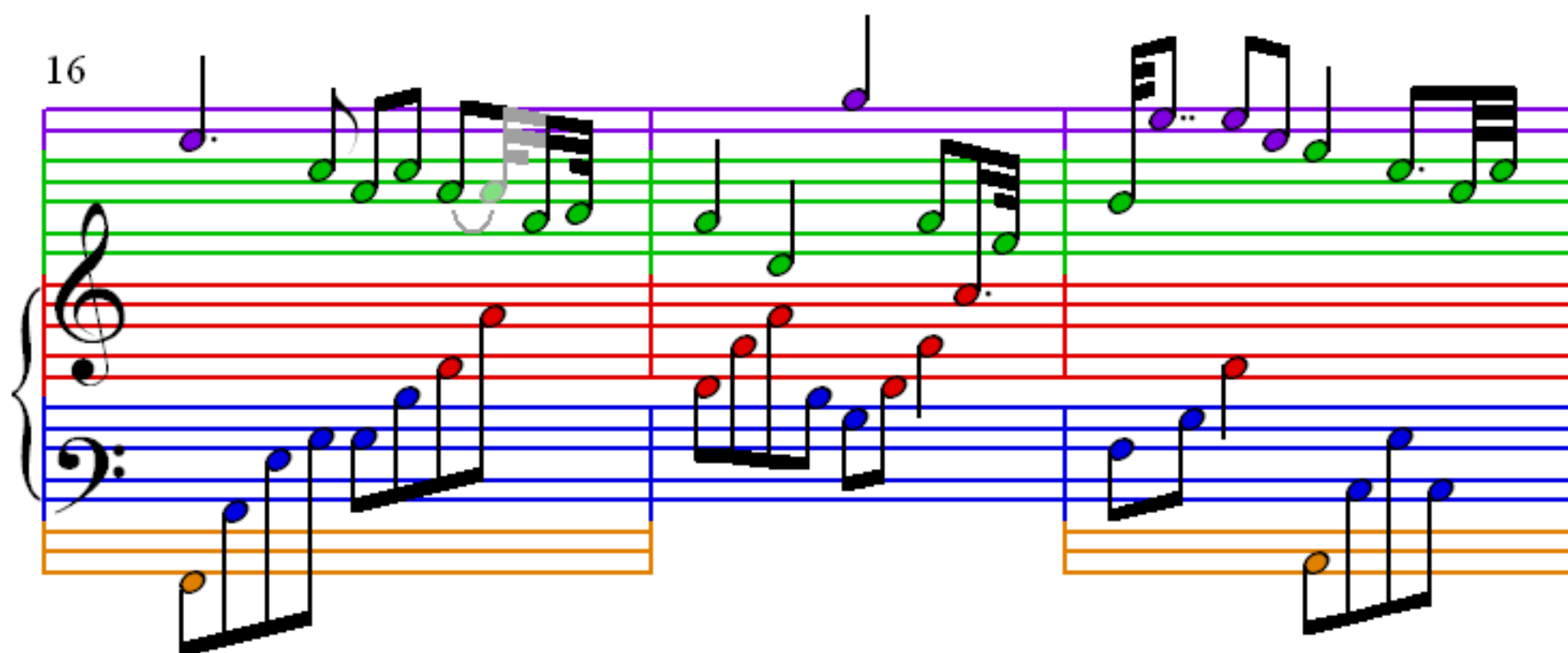
10



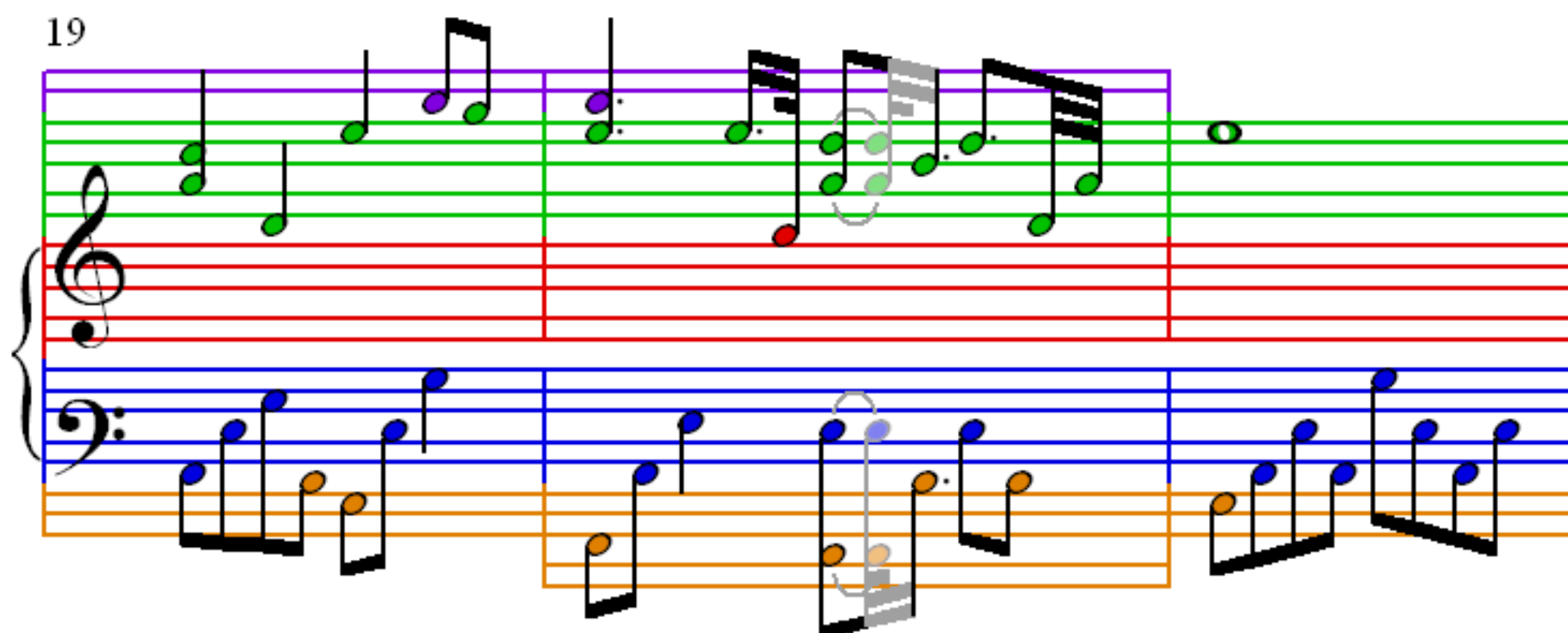
13



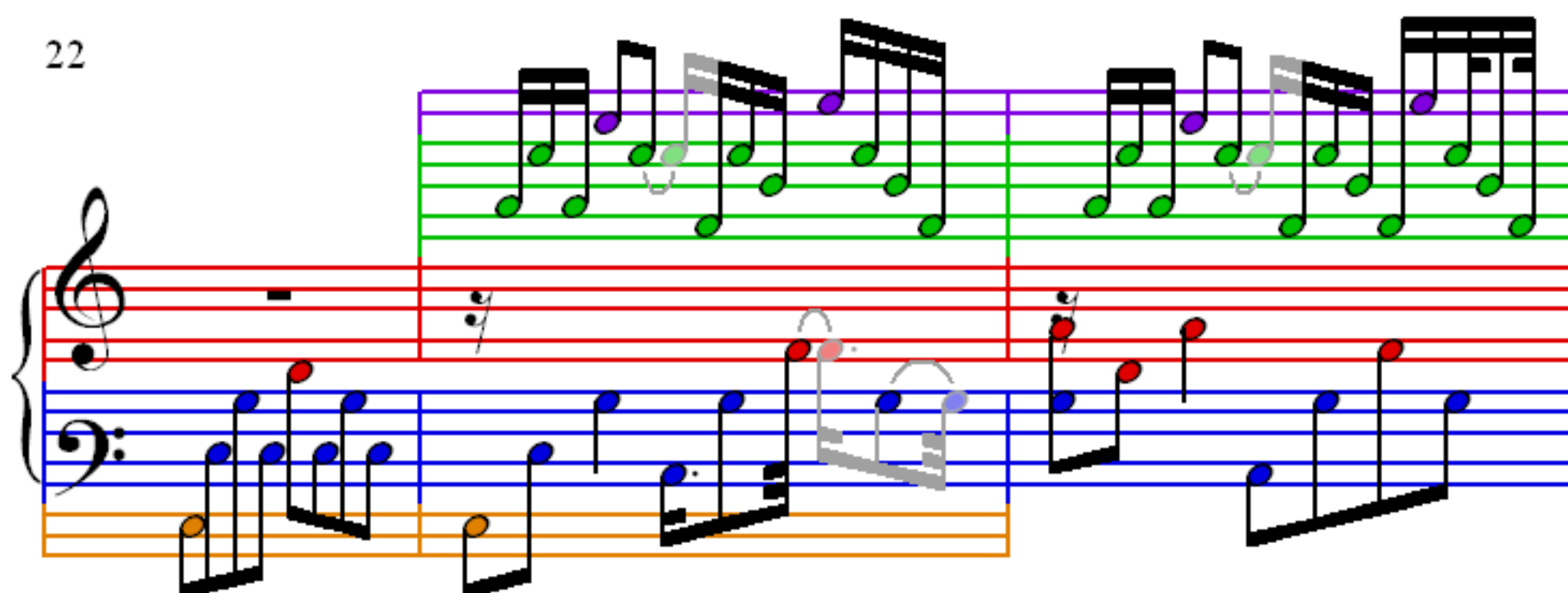
16



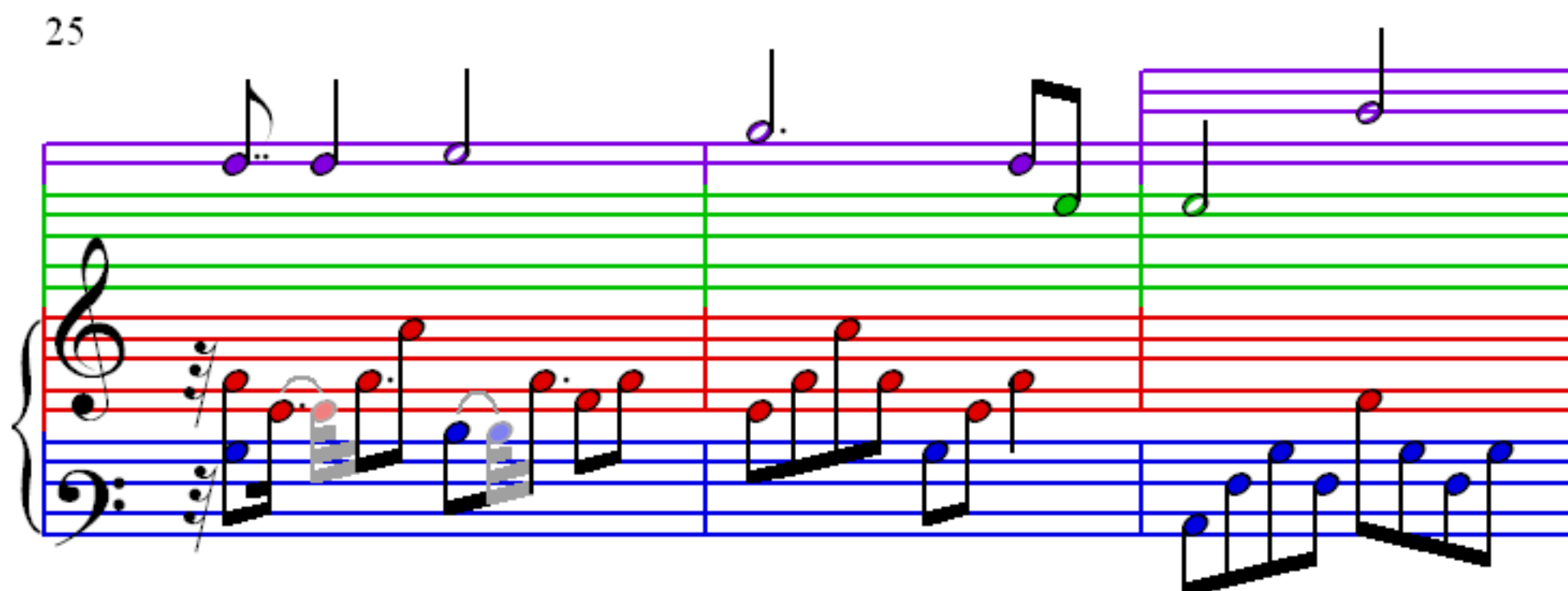
19



22



25



28

This system contains measures 28, 29, and 30. The right hand (treble clef) features a melody with notes colored purple, green, and red. The left hand (bass clef) provides a harmonic accompaniment with notes colored blue, red, and black. The notes are connected by stems and beams, indicating a continuous melodic and harmonic flow.

31

This system contains measures 31, 32, and 33. The right hand continues the melody with notes in green, red, and black. The left hand accompaniment includes notes in blue, red, and black. The notation shows a progression of chords and melodic lines across the three measures.

34

This system contains measures 34, 35, and 36. The right hand features a more complex melodic line with notes in green, red, and black. The left hand accompaniment includes notes in blue, red, and black. The notation shows a progression of chords and melodic lines across the three measures.

