

Romantic Piano

Richard Clayderman

$\text{♩} = 80$

1

4

7

10

The image displays a musical score for a piece titled "Romantic Piano" by Richard Clayderman. The score is presented in four systems, each containing a grand staff (treble and bass clefs). The tempo is marked as $\text{♩} = 80$. The key signature is one flat (B-flat major or D minor), and the time signature is 4/4. The notation is color-coded: treble clef notes are green, bass clef notes are blue, and the piano's left hand (bass clef) notes are orange. The score begins with a first measure (1) and continues through measures 4, 7, and 10. The melody in the treble clef is simple and melodic, while the bass clef provides a steady accompaniment. The score is written in a clean, modern notation style.

13

Measures 13-15. Treble clef: Measure 13 (G4, A4), Measure 14 (F4, E4), Measure 15 (D4, C4). Bass clef: Measure 13 (C3, D3, E3, F3), Measure 14 (G3, A3, B3, C4), Measure 15 (D4, E4, F4, G4).

16

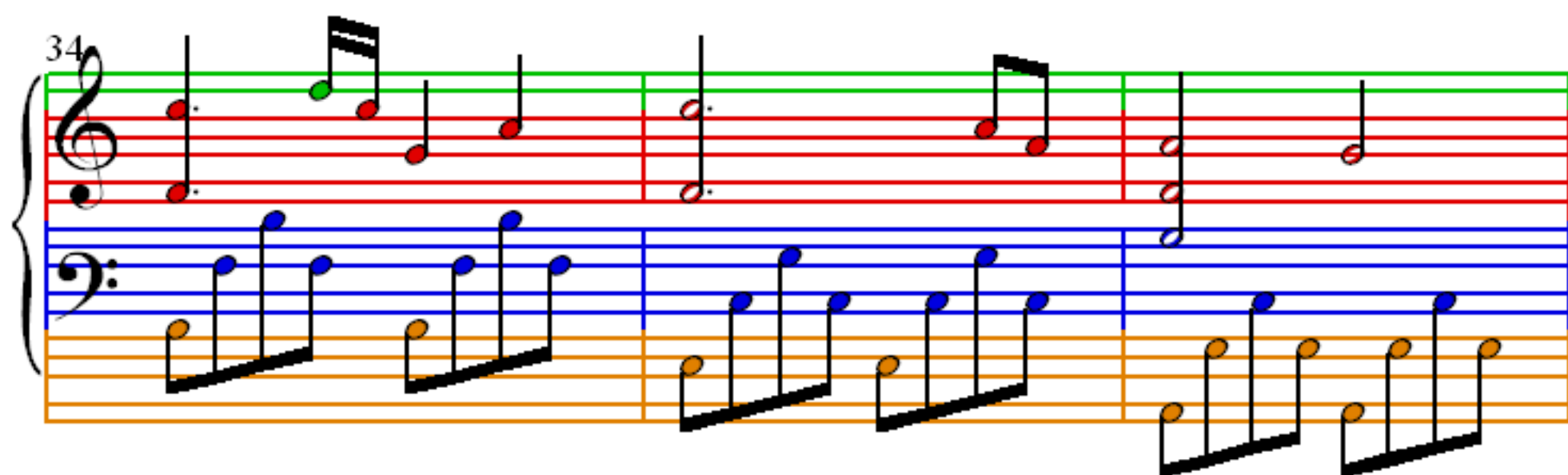
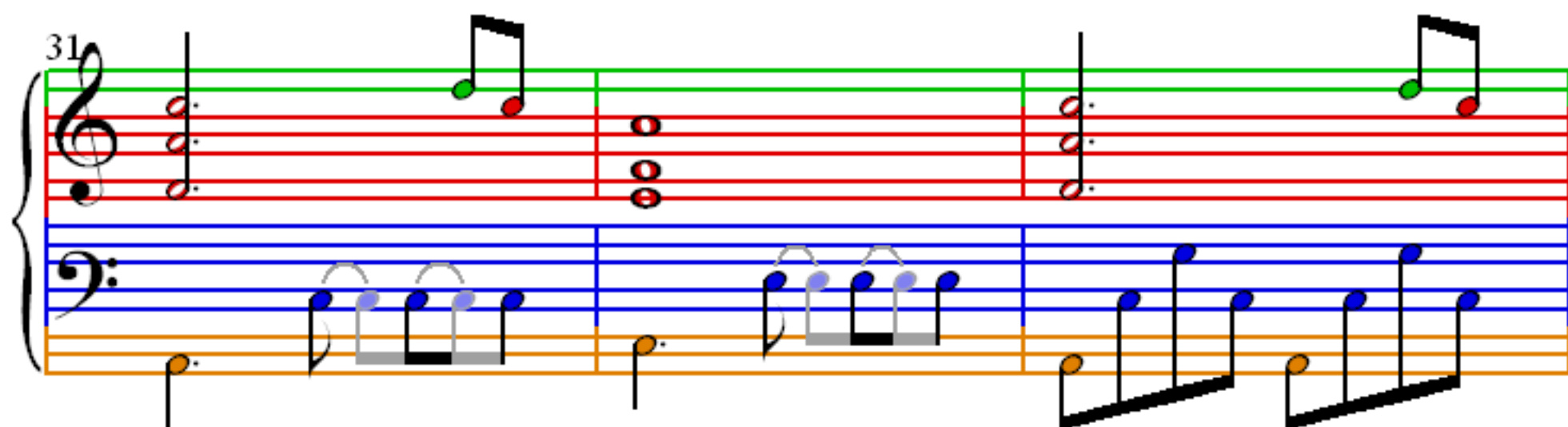
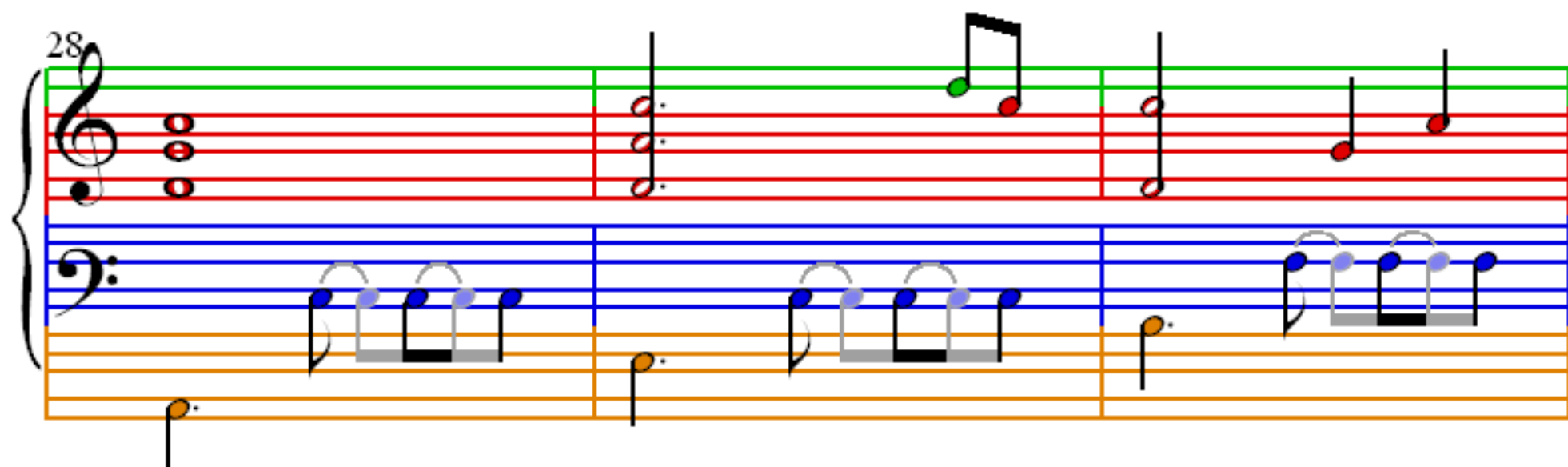
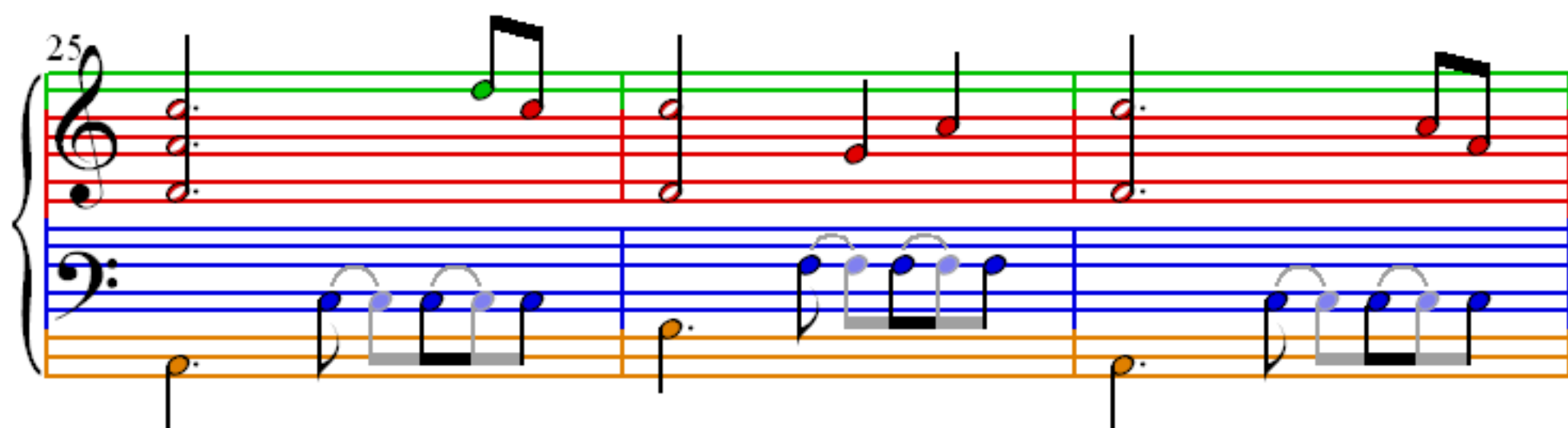
Measures 16-18. Treble clef: Measure 16 (G4, A4), Measure 17 (F4, E4), Measure 18 (D4, C4). Bass clef: Measure 16 (C3, D3, E3, F3), Measure 17 (G3, A3, B3, C4), Measure 18 (D4, E4, F4, G4).

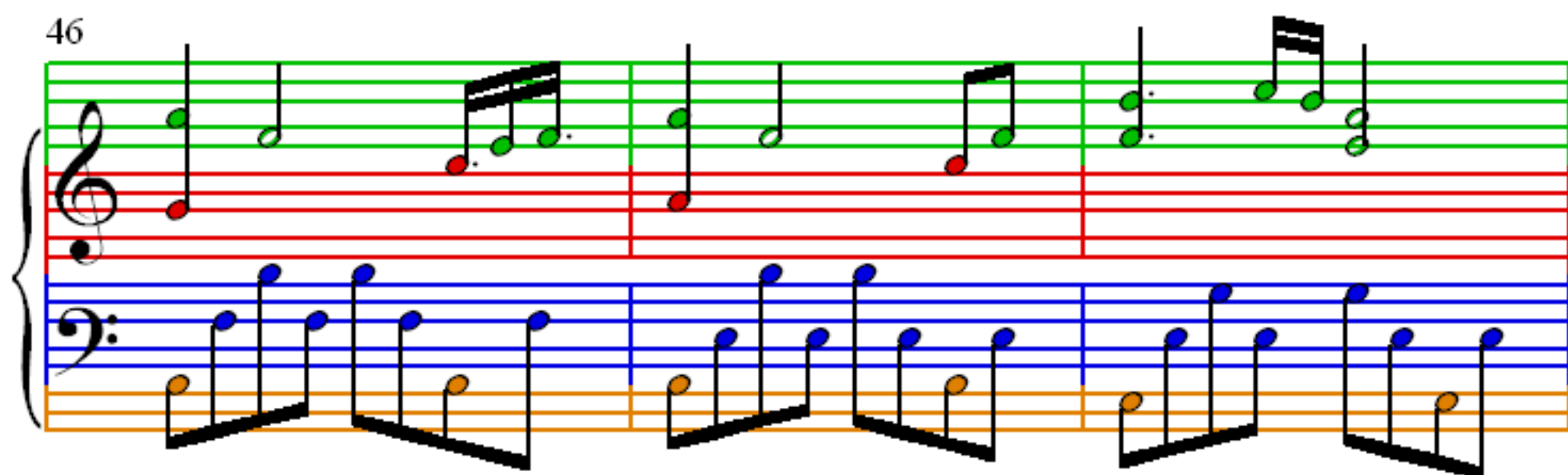
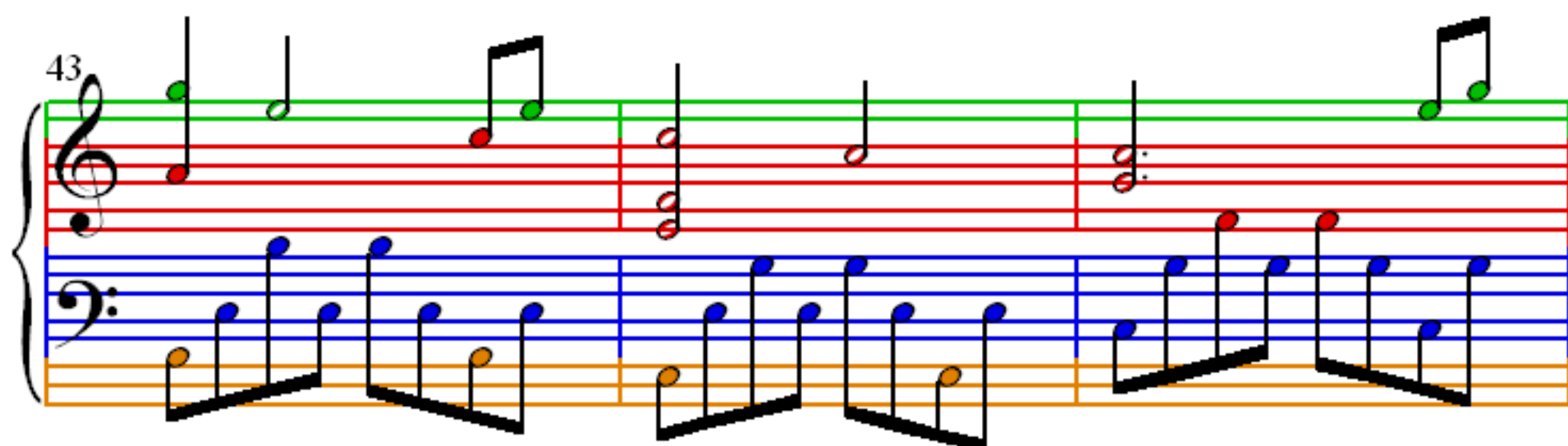
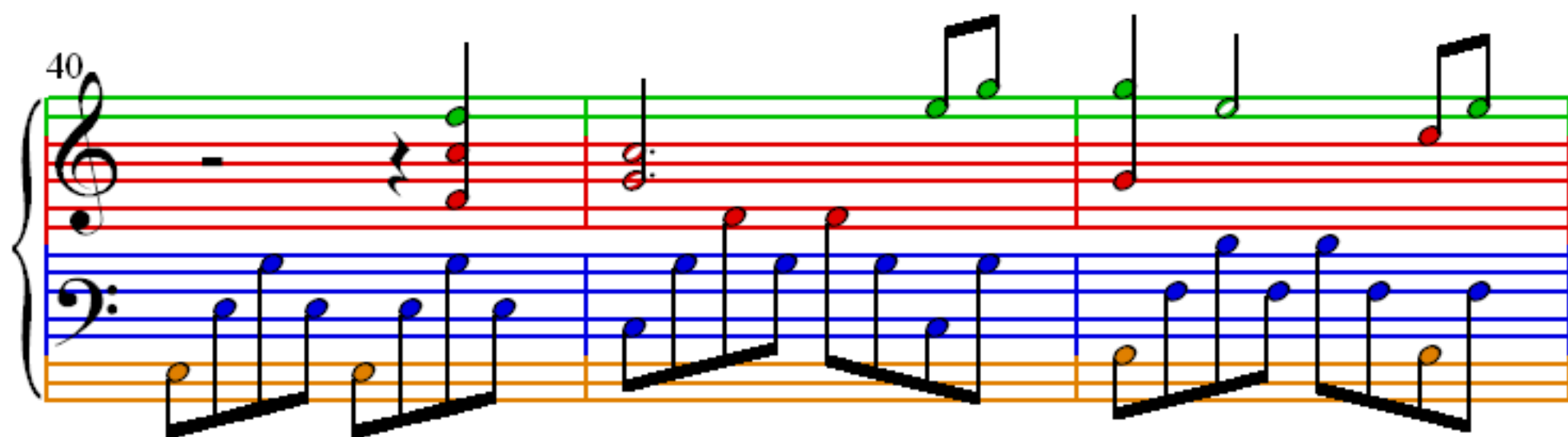
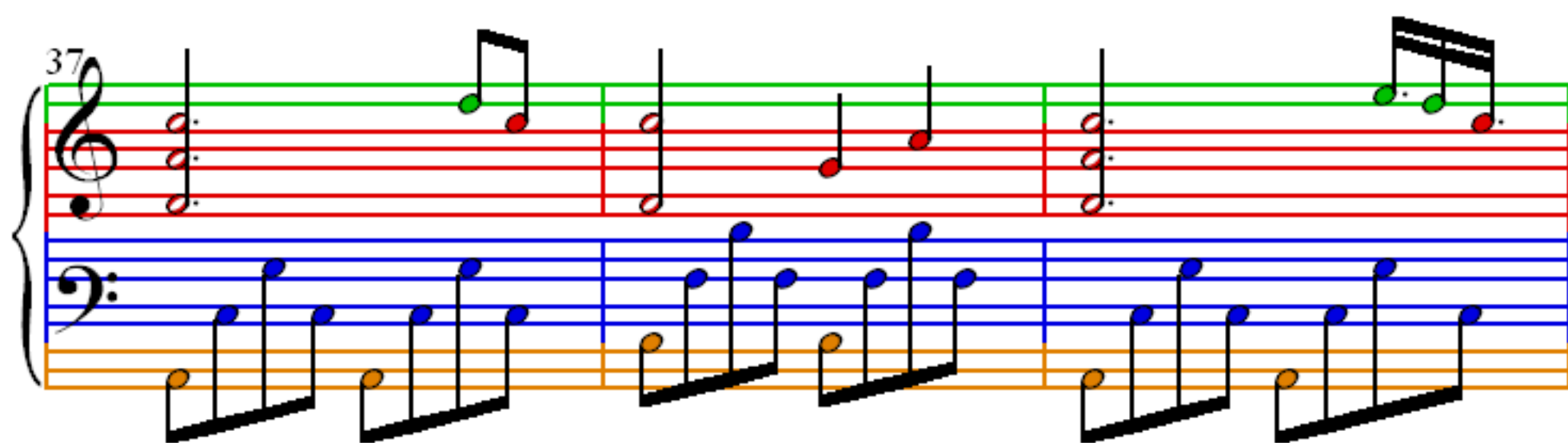
19

Measures 19-21. Treble clef: Measure 19 (G4, A4), Measure 20 (F4, E4), Measure 21 (D4, C4). Bass clef: Measure 19 (C3, D3, E3, F3), Measure 20 (G3, A3, B3, C4), Measure 21 (D4, E4, F4, G4).

22

Measures 22-24. Treble clef: Measure 22 (G4, A4), Measure 23 (F4, E4), Measure 24 (D4, C4). Bass clef: Measure 22 (C3, D3, E3, F3), Measure 23 (G3, A3, B3, C4), Measure 24 (D4, E4, F4, G4).





49

Measures 49-51. The treble clef staff has a green line and a red line. The bass clef staff has a blue line and an orange line. The music consists of eighth and sixteenth notes, with some beamed sixteenth notes in the treble.

52

Measures 52-54. The treble clef staff has a green line and a red line. The bass clef staff has a blue line and an orange line. The music consists of eighth and sixteenth notes, with some beamed sixteenth notes in the treble.

55

Measures 55-57. The treble clef staff has a green line and a red line. The bass clef staff has a blue line and an orange line. The music consists of eighth and sixteenth notes, with some beamed sixteenth notes in the treble.

58

Measures 58-60. The treble clef staff has a green line and a red line. The bass clef staff has a blue line and an orange line. The music consists of eighth and sixteenth notes, with some beamed sixteenth notes in the treble.

61

Measures 61-63. Treble clef: Measure 61 has a red half note. Measures 62 and 63 have rests. Bass clef: Continuous eighth-note pattern in blue and orange.

64

Measures 64-67. Treble clef: Measure 64 has a green half note. Measures 65 and 66 have rests. Measure 67 has a red half note. Bass clef: Continuous eighth-note pattern in blue and orange.