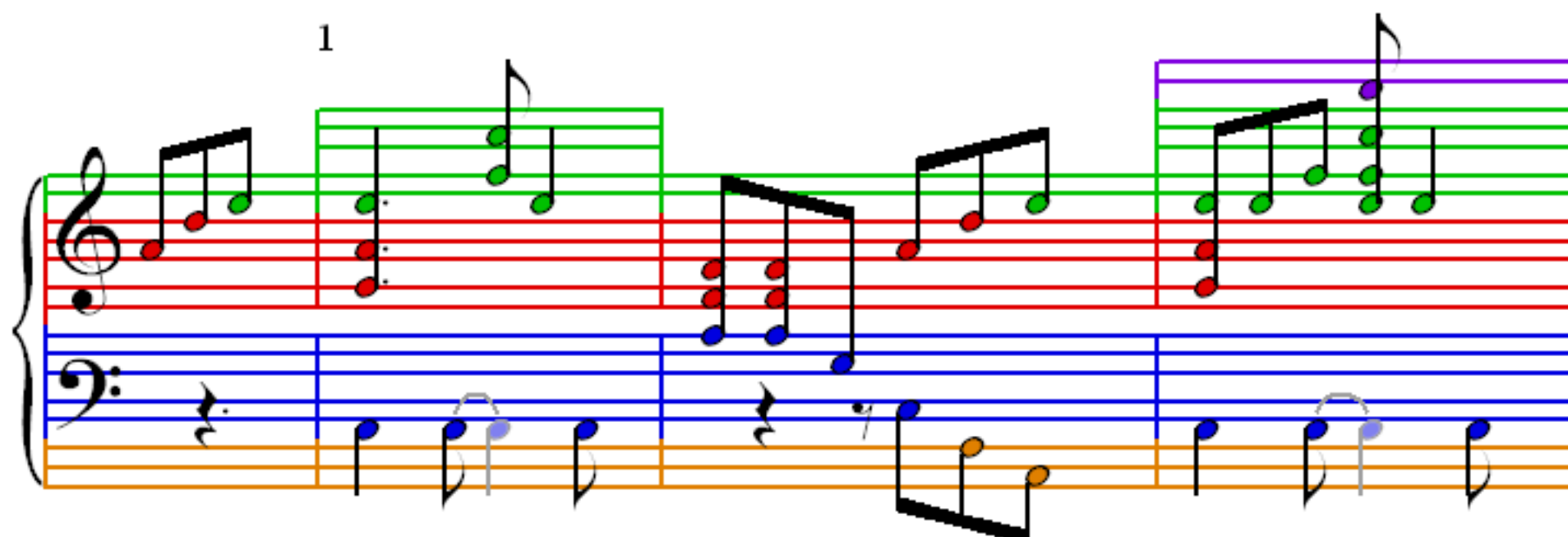


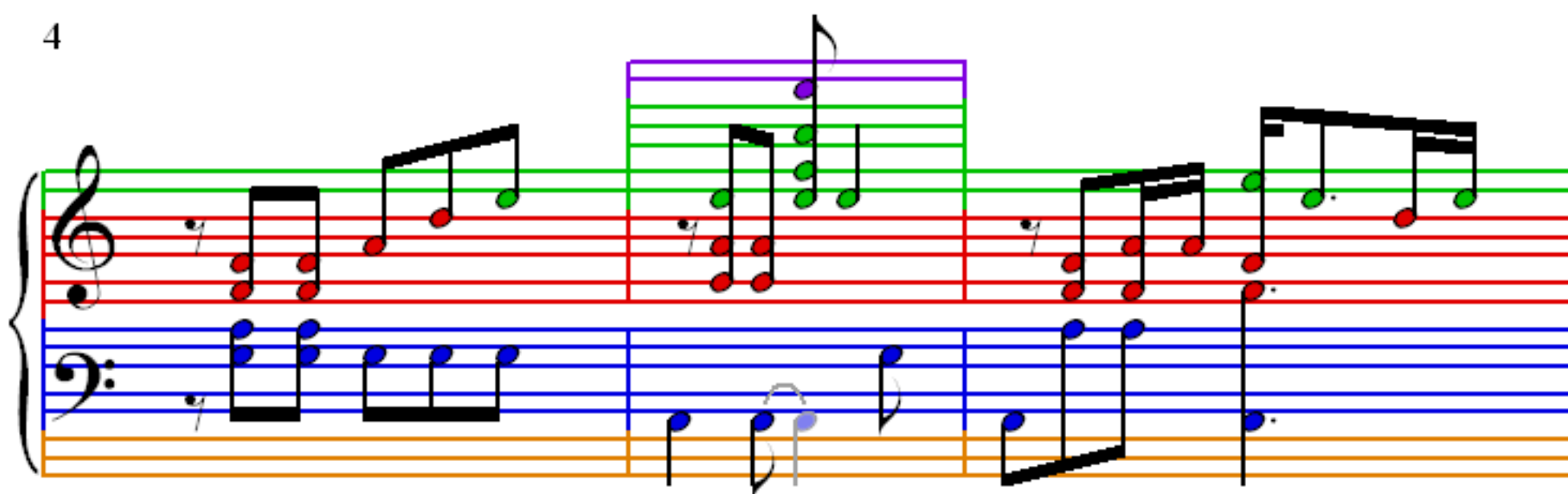
We Are The Champions

Freddie Mercury

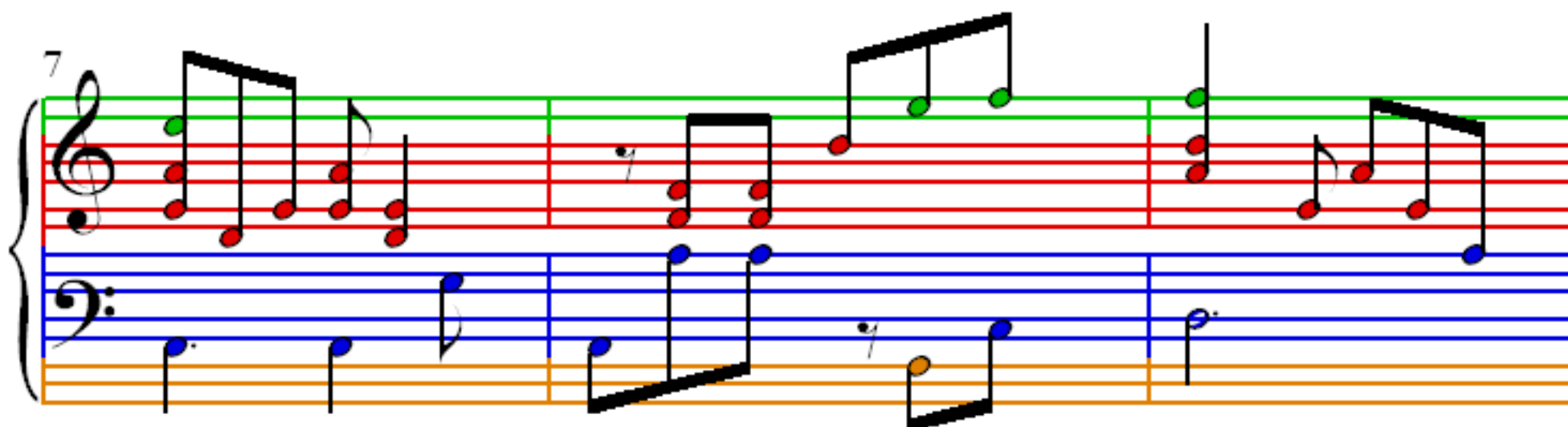
1



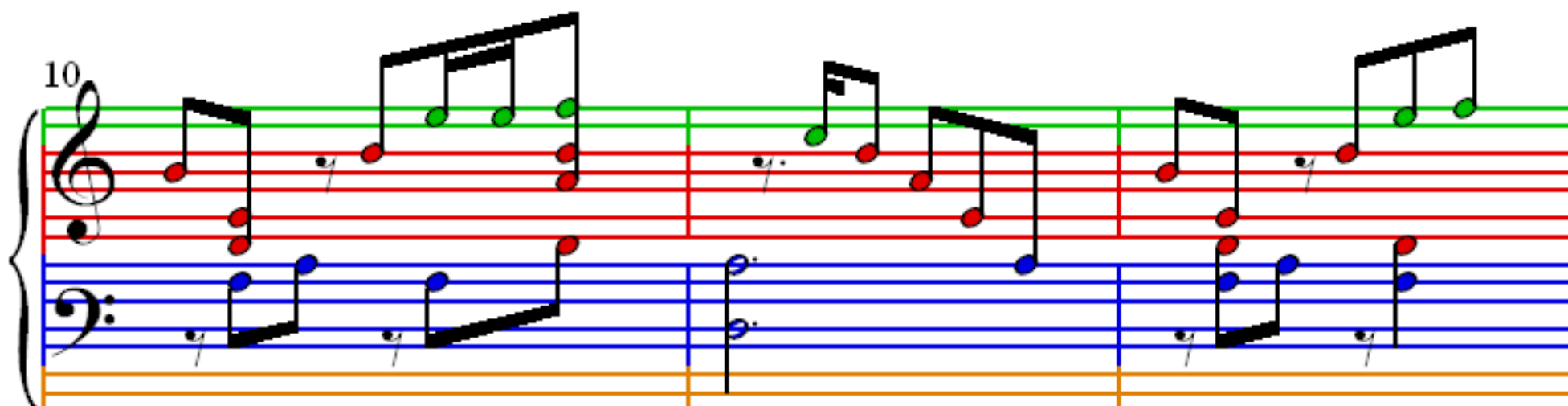
4



7



10



13

Measures 13-15. Treble clef: Measure 13 has a green chord (C4, E4, G4) and a green eighth note (A4). Measure 14 has a green chord (C4, E4, G4) and a green eighth note (A4). Measure 15 has a green chord (C4, E4, G4) and a green eighth note (A4). Bass clef: Measure 13 has a blue chord (C3, E3, G3) and a blue eighth note (A3). Measure 14 has a blue chord (C3, E3, G3) and a blue eighth note (A3). Measure 15 has a blue chord (C3, E3, G3) and a blue eighth note (A3). A pink staff is added below the bass clef in measure 15.

16

Measures 16-18. Treble clef: Measure 16 has a green chord (C4, E4, G4) and a green eighth note (A4). Measure 17 has a green chord (C4, E4, G4) and a green eighth note (A4). Measure 18 has a green chord (C4, E4, G4) and a green eighth note (A4). Bass clef: Measure 16 has a blue chord (C3, E3, G3) and a blue eighth note (A3). Measure 17 has a blue chord (C3, E3, G3) and a blue eighth note (A3). Measure 18 has a blue chord (C3, E3, G3) and a blue eighth note (A3). A pink staff is added below the bass clef in measure 18.

19

Measures 19-22. Treble clef: Measure 19 has a green chord (C4, E4, G4) and a green eighth note (A4). Measure 20 has a green chord (C4, E4, G4) and a green eighth note (A4). Measure 21 has a green chord (C4, E4, G4) and a green eighth note (A4). Measure 22 has a green chord (C4, E4, G4) and a green eighth note (A4). Bass clef: Measure 19 has a blue chord (C3, E3, G3) and a blue eighth note (A3). Measure 20 has a blue chord (C3, E3, G3) and a blue eighth note (A3). Measure 21 has a blue chord (C3, E3, G3) and a blue eighth note (A3). Measure 22 has a blue chord (C3, E3, G3) and a blue eighth note (A3). A pink staff is added below the bass clef in measure 22.

23

Measures 23-26. Treble clef: Measure 23 has a green chord (C4, E4, G4) and a green eighth note (A4). Measure 24 has a green chord (C4, E4, G4) and a green eighth note (A4). Measure 25 has a green chord (C4, E4, G4) and a green eighth note (A4). Measure 26 has a green chord (C4, E4, G4) and a green eighth note (A4). Bass clef: Measure 23 has a blue chord (C3, E3, G3) and a blue eighth note (A3). Measure 24 has a blue chord (C3, E3, G3) and a blue eighth note (A3). Measure 25 has a blue chord (C3, E3, G3) and a blue eighth note (A3). Measure 26 has a blue chord (C3, E3, G3) and a blue eighth note (A3). A pink staff is added below the bass clef in measure 26.

27

Measures 27-30. Treble clef: Measures 27-28 have green and red chords. Measures 29-30 have green and red chords. Bass clef: Measures 27-28 have blue and orange notes. Measures 29-30 have blue and orange notes.

31

Measures 31-34. Treble clef: Measures 31-33 have green and red chords. Measure 34 has green and red chords. Bass clef: Measures 31-33 have blue and orange notes. Measure 34 has blue and orange notes.

35

Measures 35-38. Treble clef: Measures 35-36 have green and red chords. Measures 37-38 have green and red chords. Bass clef: Measures 35-36 have blue and orange notes. Measures 37-38 have blue and orange notes.

39

Measures 39-42. Treble clef: Measures 39-40 have green and red chords. Measures 41-42 have green and red chords. Bass clef: Measures 39-40 have blue and orange notes. Measures 41-42 have blue and orange notes.