

House of the Rising Sun

♩ = 98

American Folk song performed by The Animals

1

5

9

13

17

Measures 17-20. Treble clef: G4 (quarter), A4 (quarter), B4 (quarter), C5 (quarter), D5 (quarter), E5 (quarter), F5 (quarter), G5 (quarter). Bass clef: F3 (quarter), G3 (quarter), A3 (quarter), B3 (quarter), C4 (quarter), B3 (quarter), A3 (quarter), G3 (quarter). Treble clef has a slur over measures 18-19.

21

Measures 21-24. Treble clef: A4 (quarter), B4 (quarter), C5 (quarter), D5 (quarter), E5 (quarter), F5 (quarter), G5 (quarter), A5 (quarter). Bass clef: F3 (quarter), G3 (quarter), A3 (quarter), B3 (quarter), C4 (quarter), B3 (quarter), A3 (quarter), G3 (quarter). Treble clef has a slur over measures 22-23.

25

Measures 25-28. Treble clef: Whole rests. Bass clef: F3 (quarter), G3 (quarter), A3 (quarter), B3 (quarter), C4 (quarter), B3 (quarter), A3 (quarter), G3 (quarter).

29

Measures 29-32. Treble clef: G4 (quarter), A4 (quarter), B4 (quarter), C5 (quarter), D5 (quarter), E5 (quarter), F5 (quarter), G5 (quarter). Bass clef: F3 (quarter), G3 (quarter), A3 (quarter), B3 (quarter), C4 (quarter), B3 (quarter), A3 (quarter), G3 (quarter). Treble clef has a slur over measures 30-31.

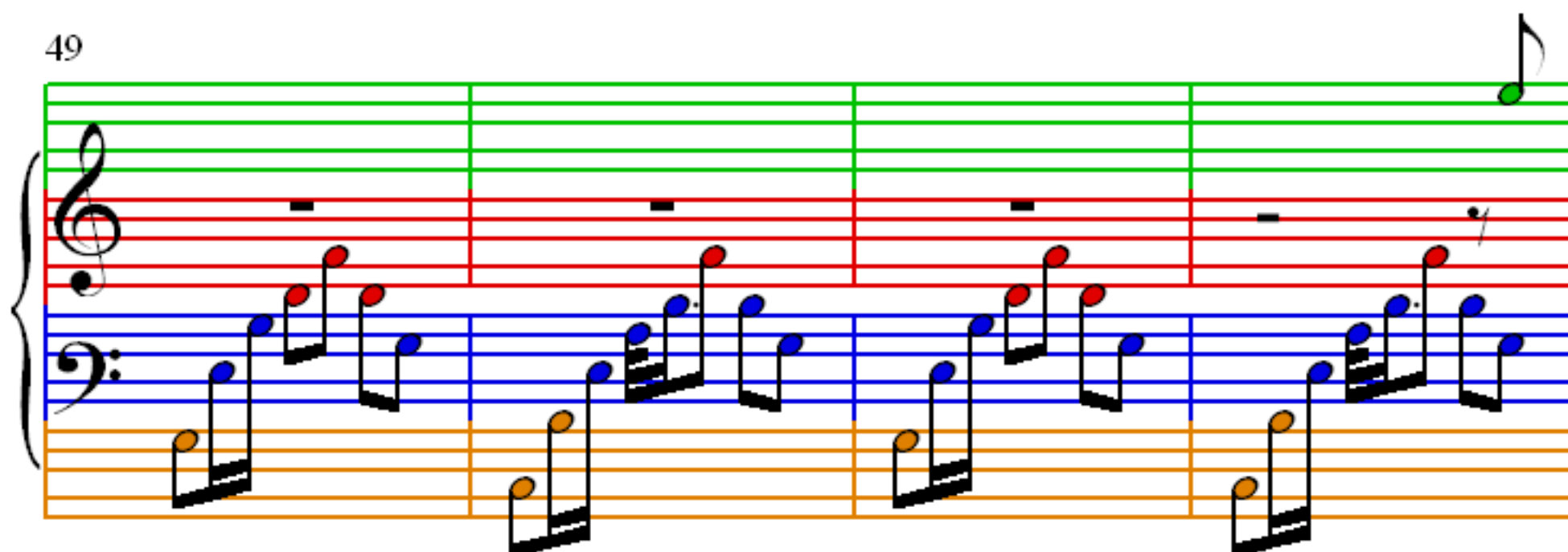
33

37

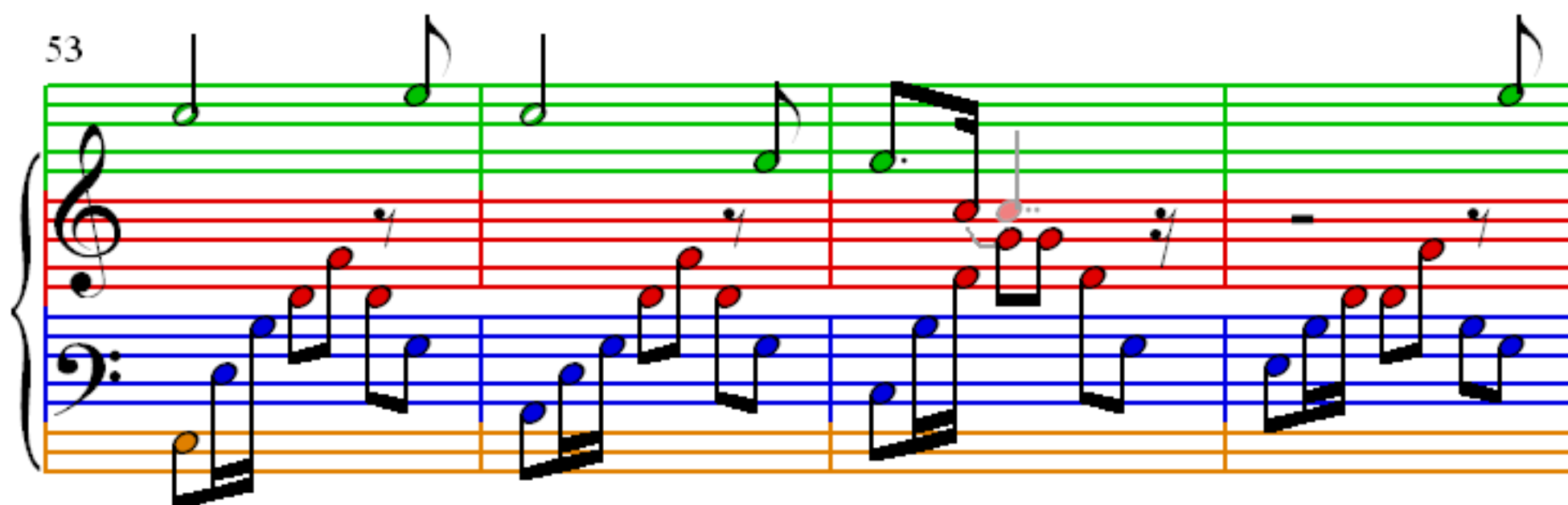
41

45

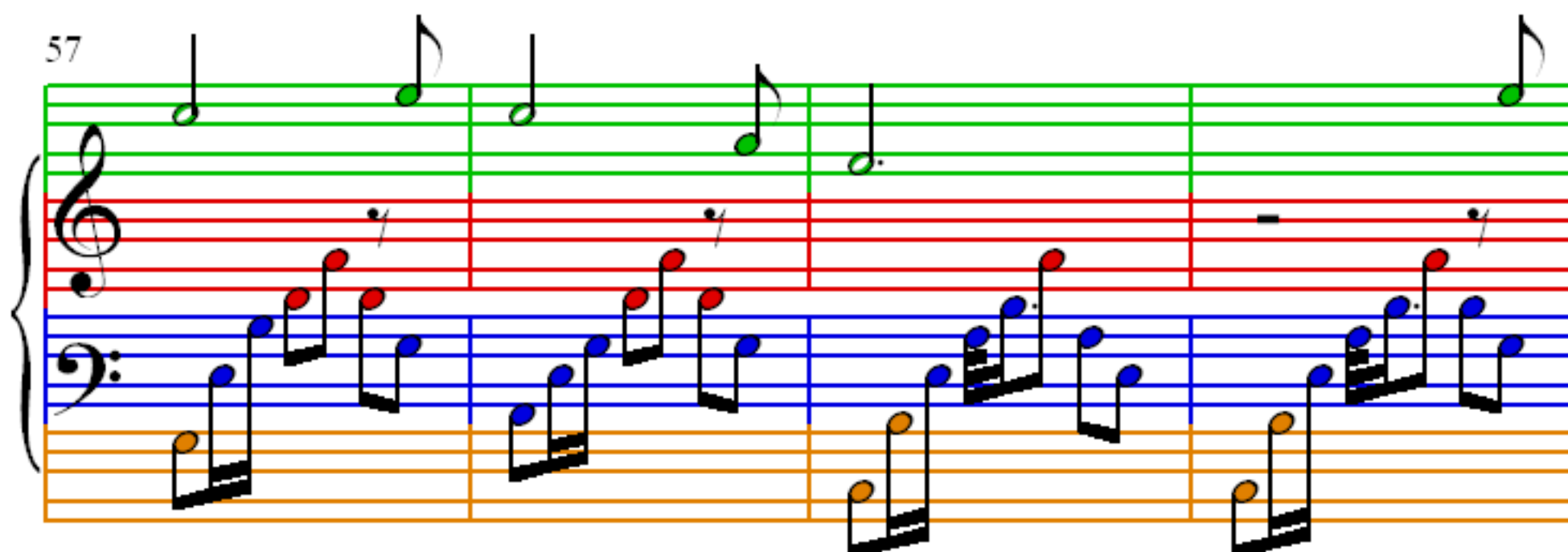
49



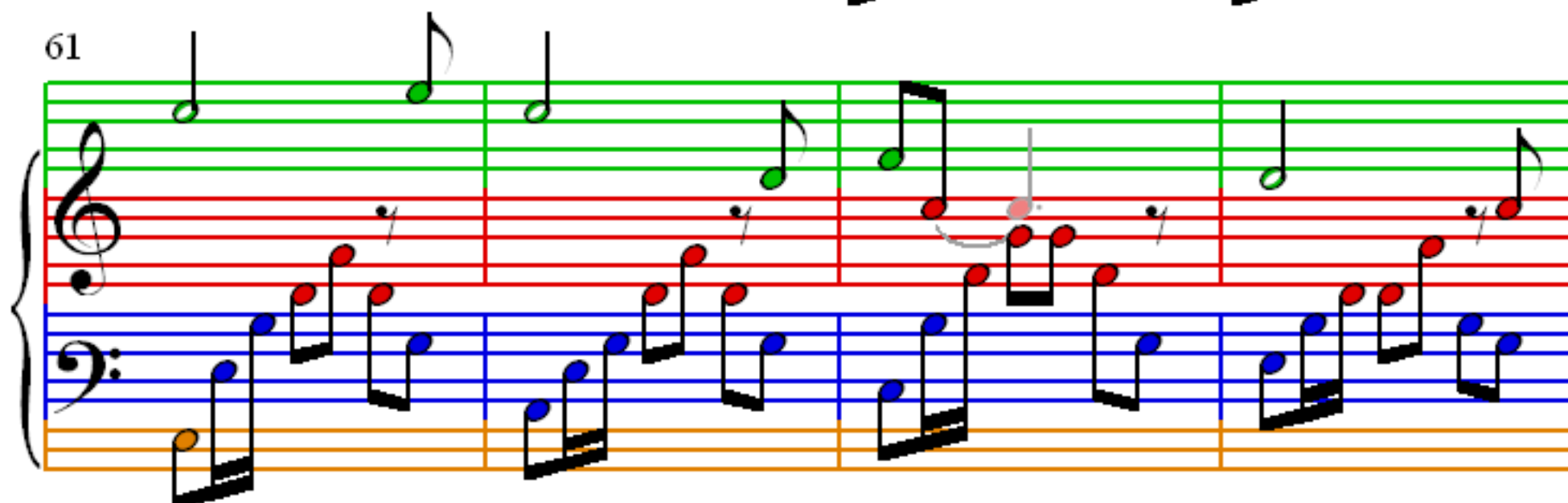
53

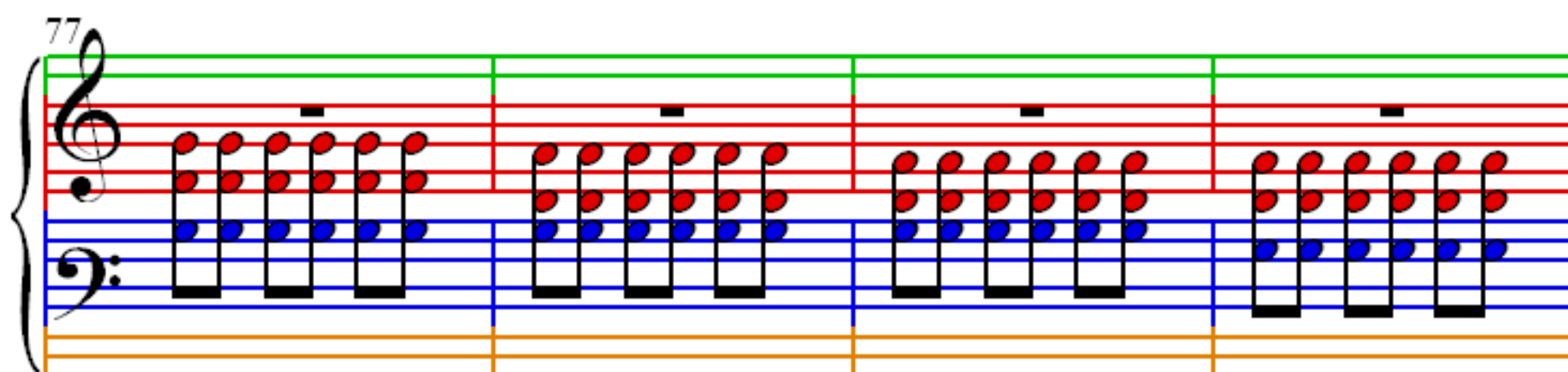
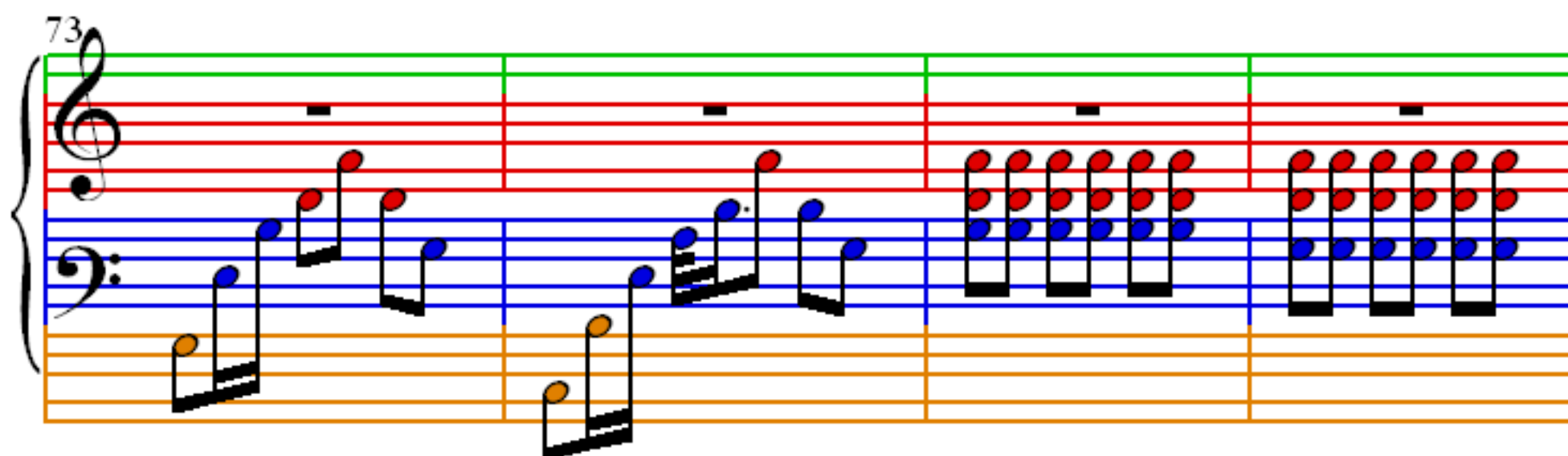
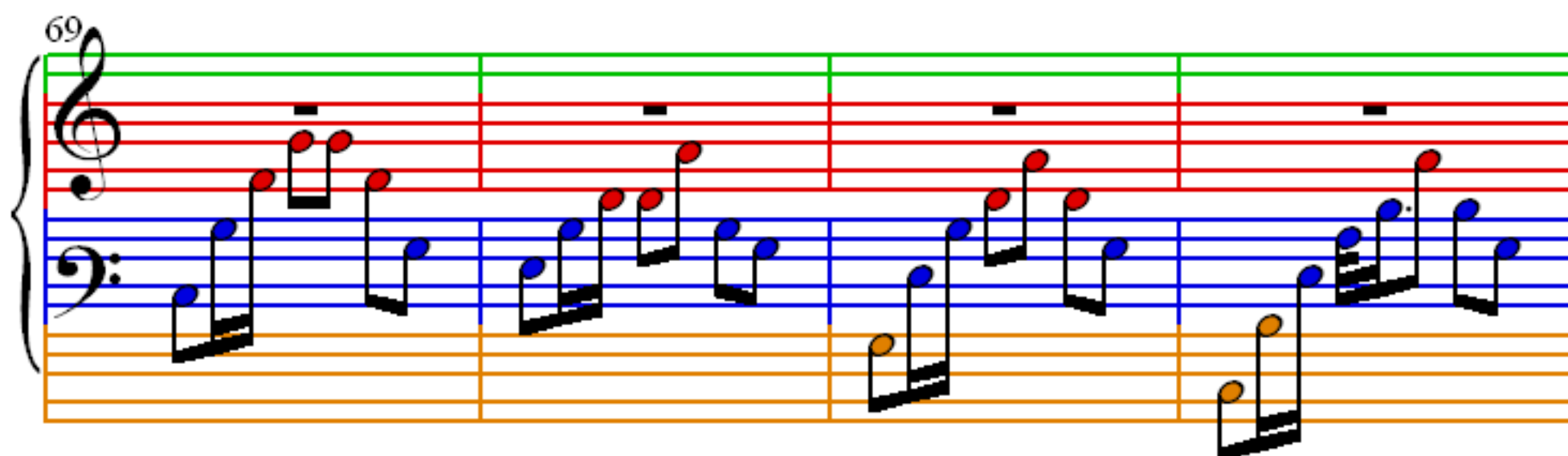
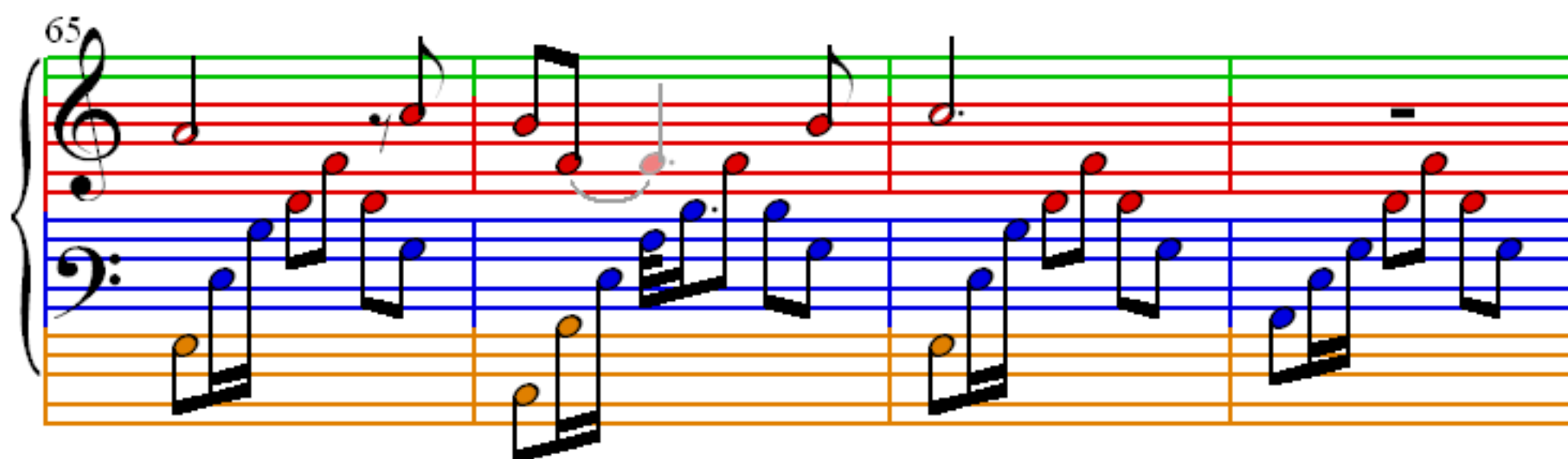


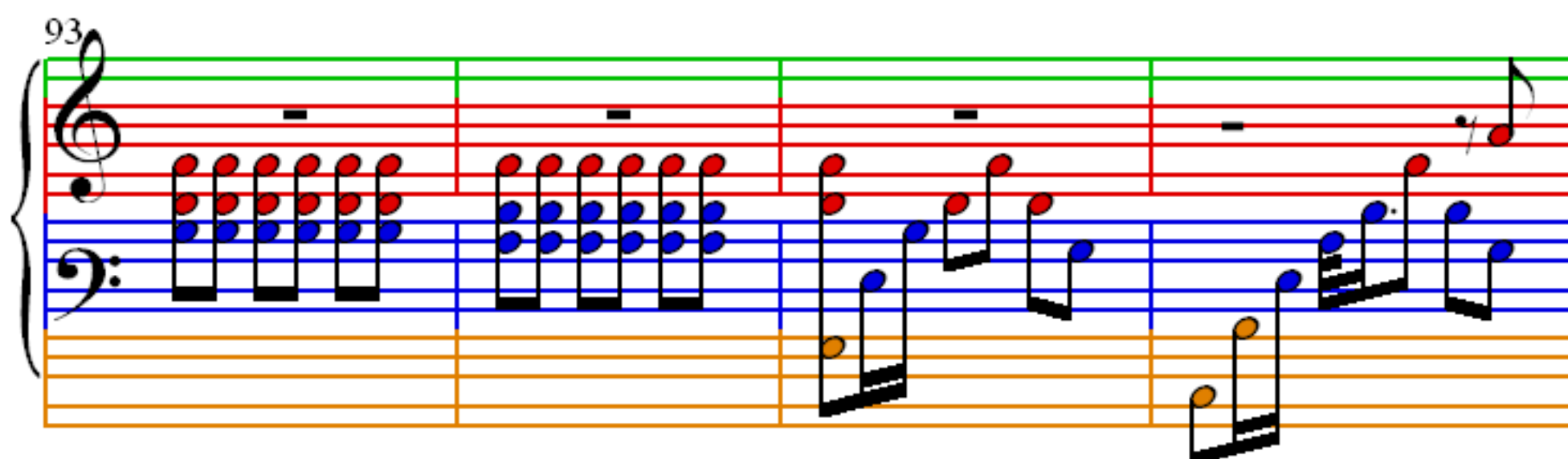
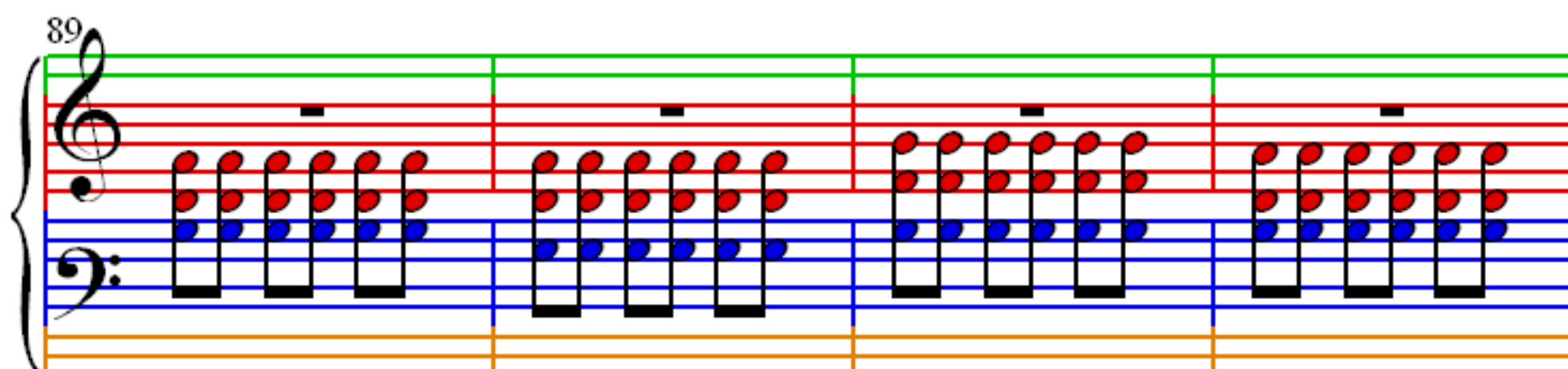
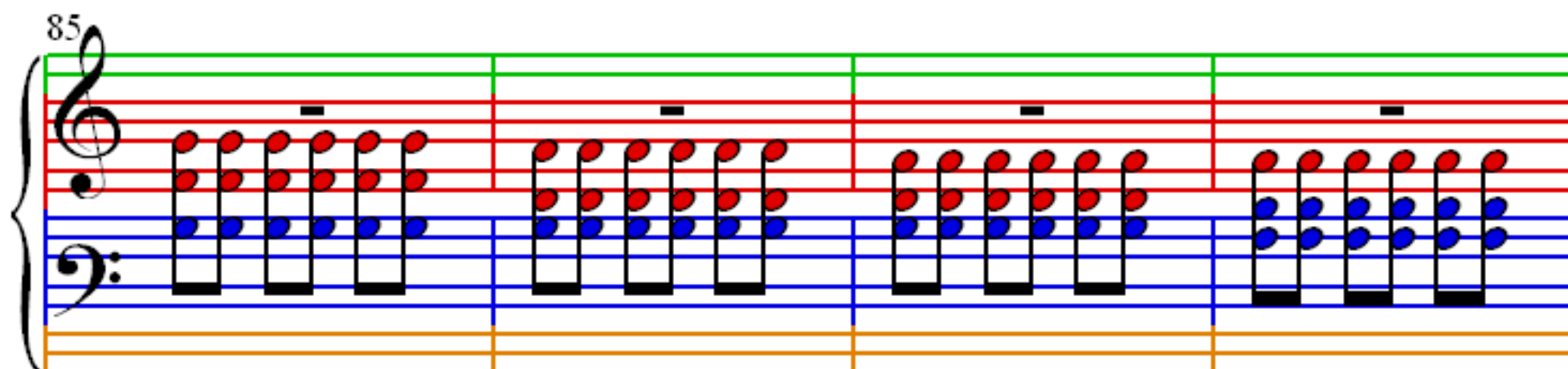
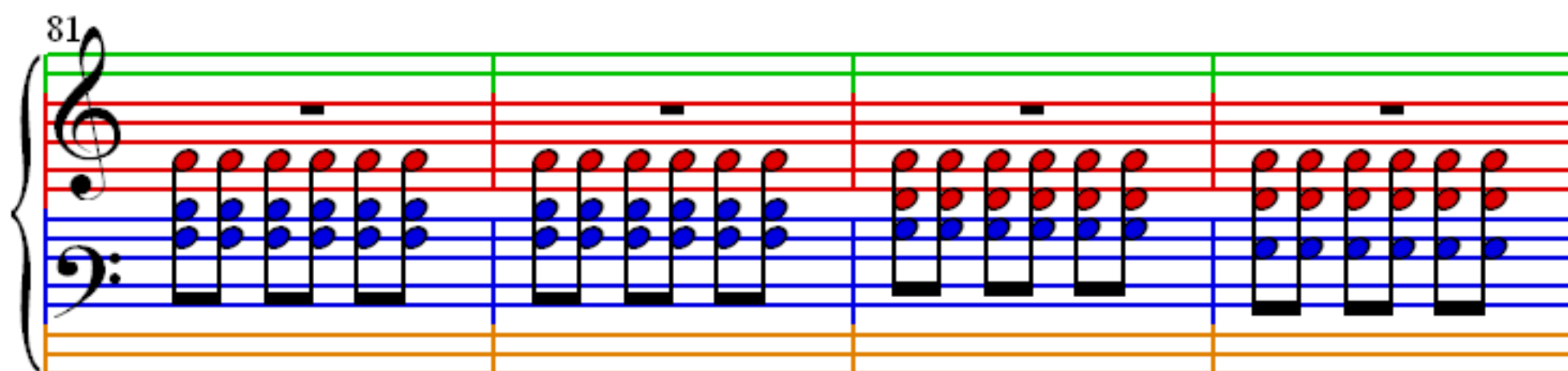
57



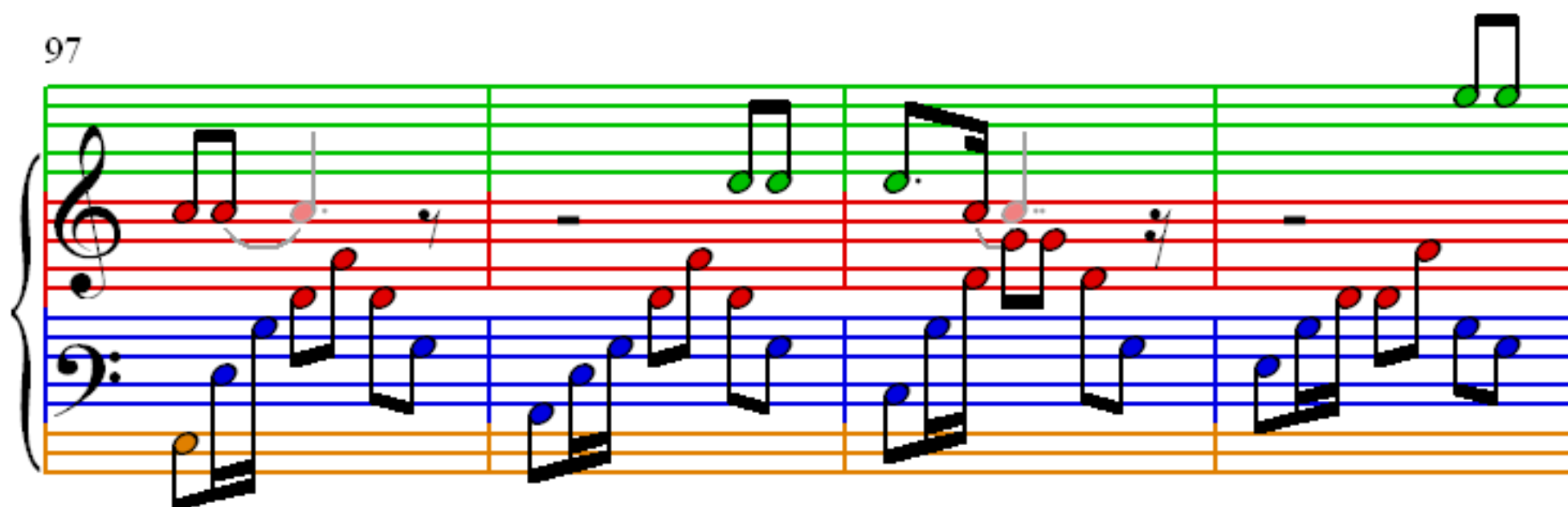
61



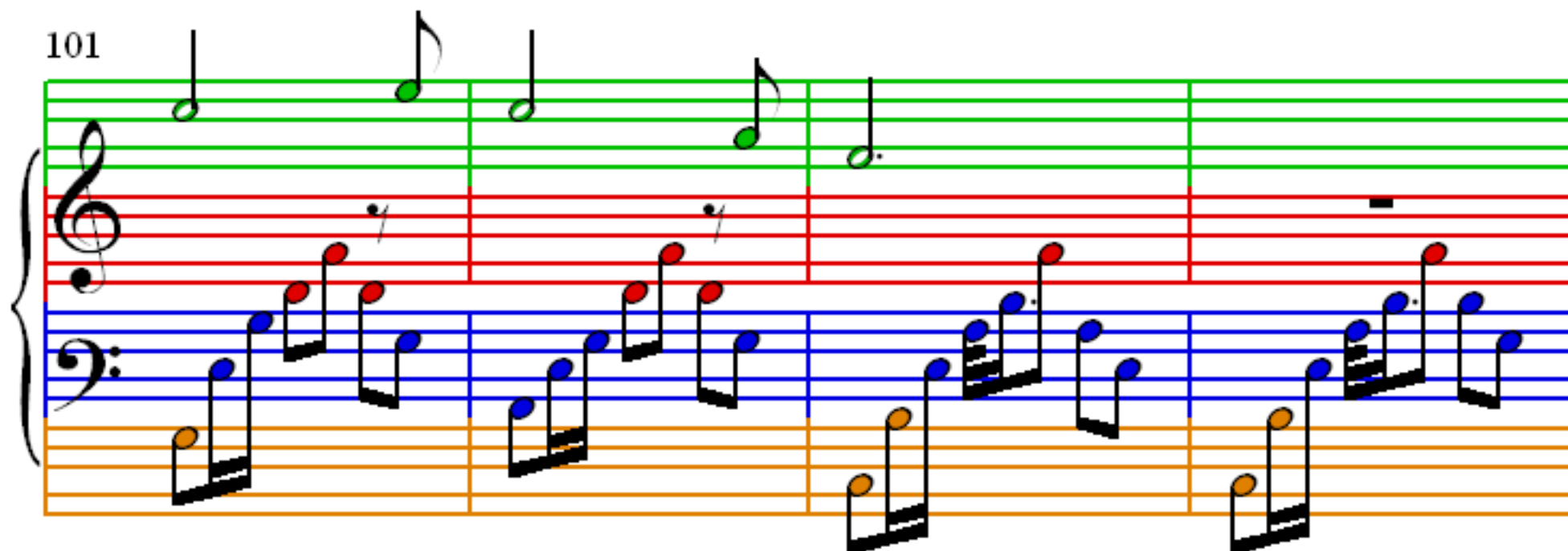




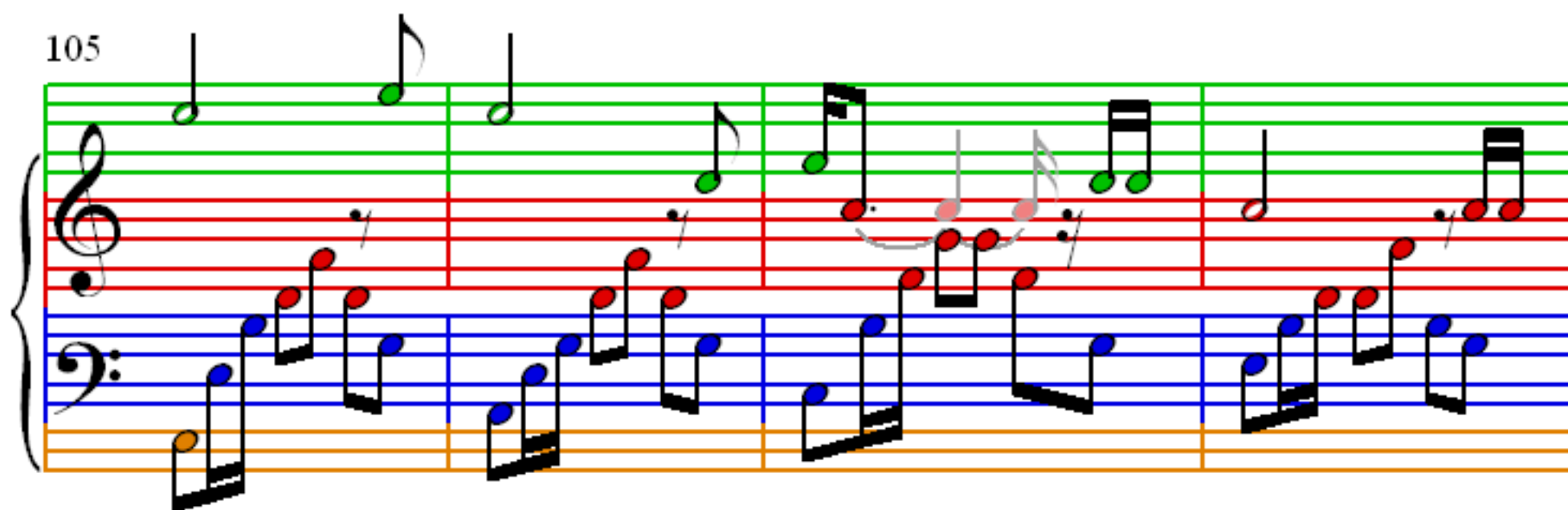
97



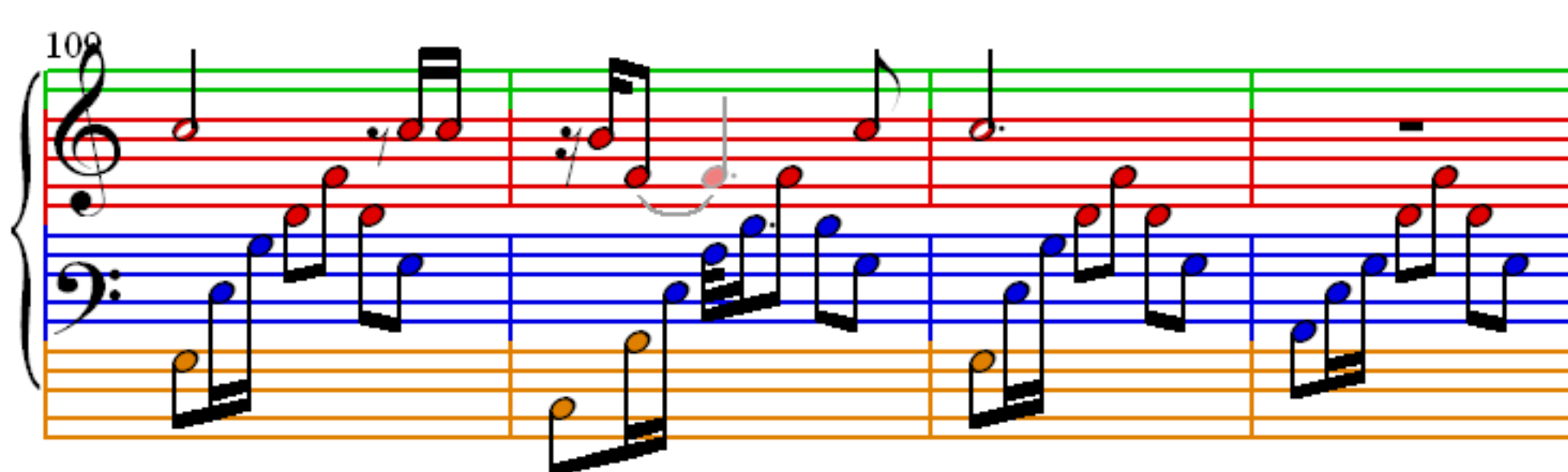
101



105



109



113

117

121

125

128

132

136

140

145

149

153

157

161

Musical score for 'The Rose Tree'. The score is written for three staves: Treble (red), Bass (blue), and a third staff (orange). The Treble staff has a green line above it. The Bass staff has a blue line below it. The third staff has an orange line below it. The score is divided into four measures. The first measure shows a treble clef, a bass clef, and a single note on the orange staff. The second measure shows a treble clef, a bass clef, and a single note on the orange staff. The third measure shows a treble clef, a bass clef, and a single note on the orange staff. The fourth measure shows a treble clef, a bass clef, and a single note on the orange staff.

A musical score for the song "The Rose Tree". The score is written for a piano and voice. The piano part is in the left hand, with the treble and bass staves. The voice part is in the right hand, with a single staff. The key signature is one flat (B-flat), and the time signature is 4/4. The score consists of four measures. In the first measure, the piano plays a whole note chord (F2, A2, C3) and the voice sings a whole note (F4). In the second measure, the piano plays a whole note chord (F2, A2, C3) and the voice sings a whole note (A4). In the third measure, the piano plays a whole note chord (F2, A2, C3) and the voice sings a whole note (F4). In the fourth measure, the piano plays a whole note chord (F2, A2, C3) and the voice sings a whole note (F4). The piano part is written in a simplified style, with the notes F2, A2, and C3. The voice part is written in a simplified style, with the notes F4, A4, F4, and F4. The score is labeled "165" in the top left corner.