


How To Save a Life

 = 120

The Fray

1



4



7



10



13



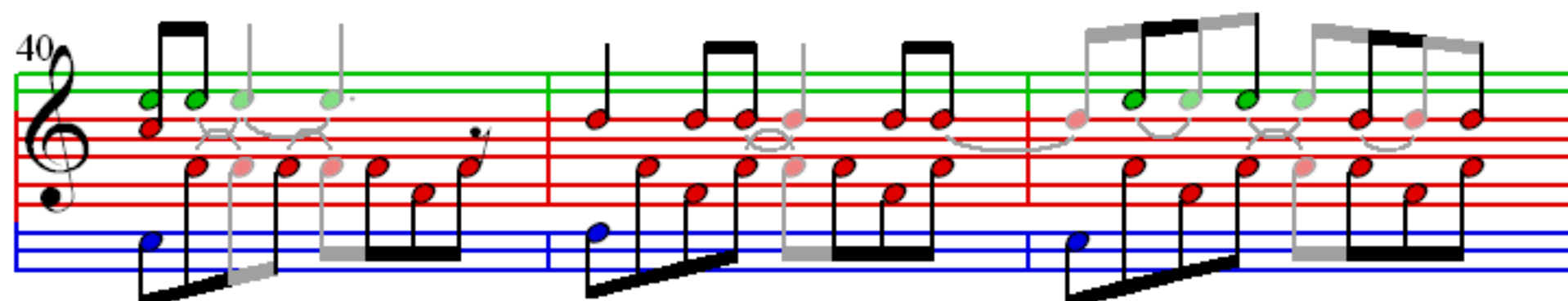
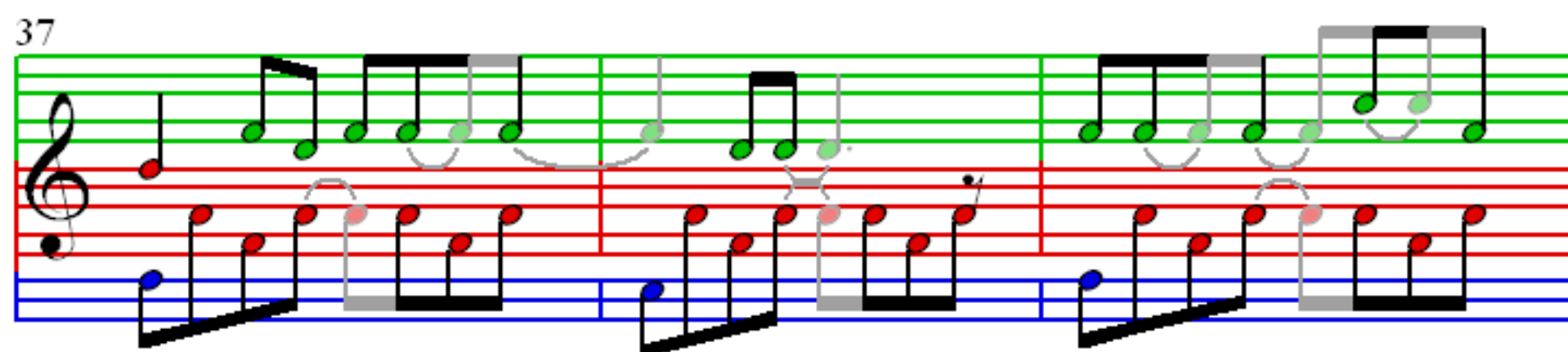
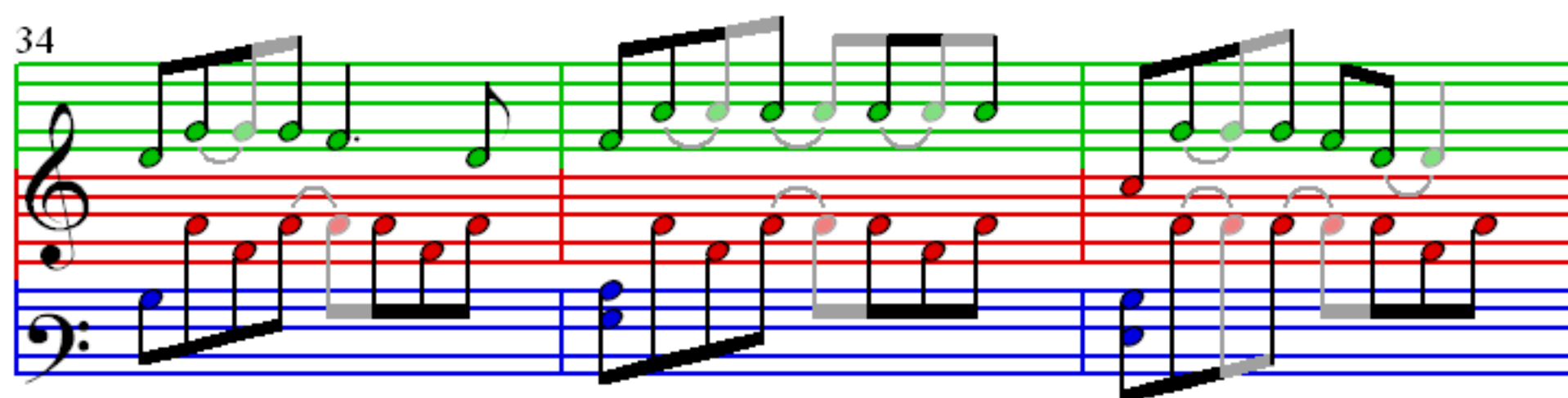
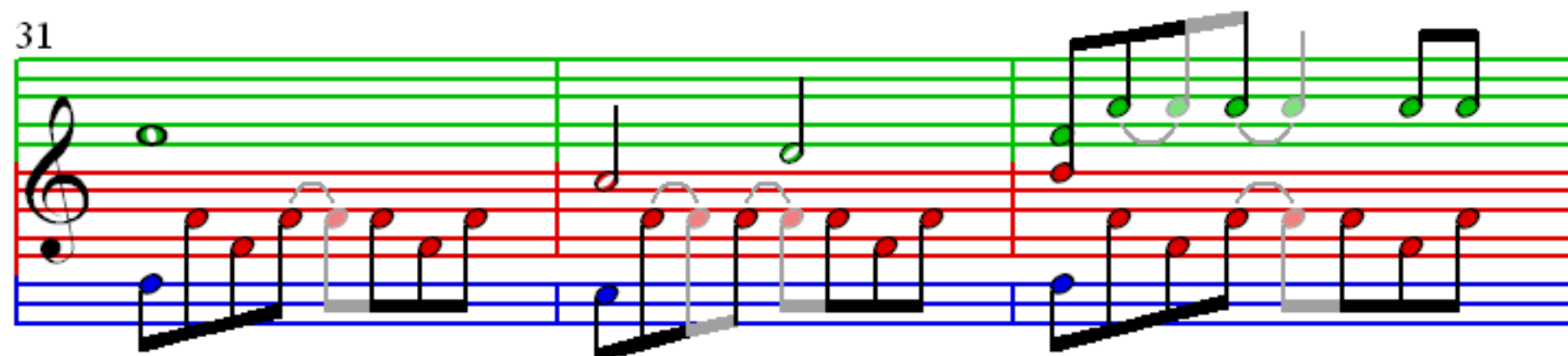
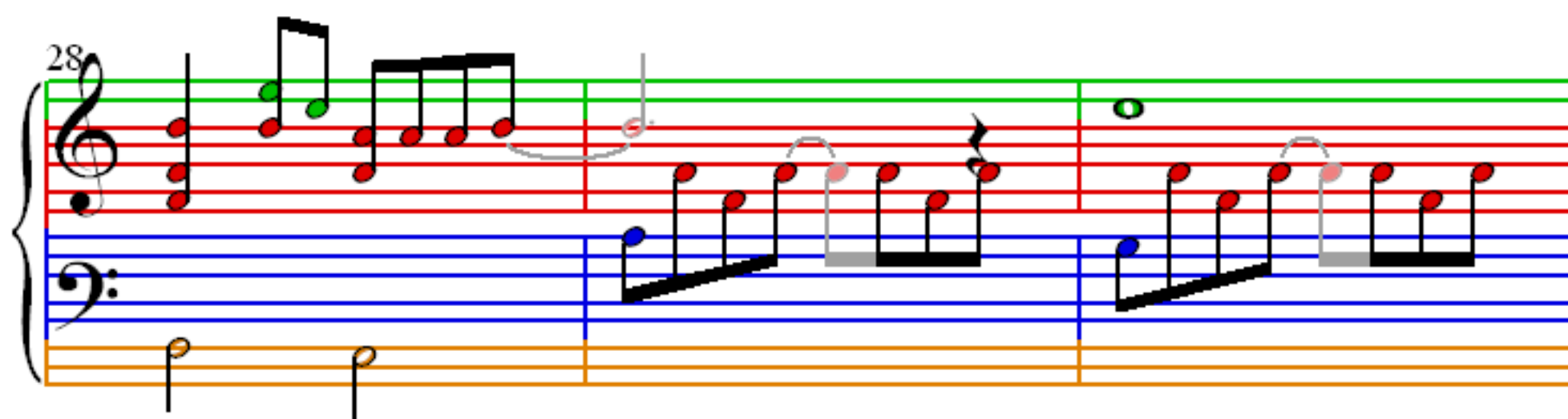
Detailed description: This block contains five systems of musical notation for the song 'How To Save a Life' by The Fray. Each system consists of a grand staff (treble and bass clefs) with a 4/4 time signature. The notation is color-coded: red for the main melody, green for the bass line, and blue for the piano accompaniment. Measures are numbered 1, 4, 7, 10, and 13 at the start of each system. The notation includes various note values, rests, and ties, with some notes highlighted in red, green, or blue to match the color-coding.

16

19

22

25



43

46

49

52

55

58

61

64

67

The image displays a musical score for the song "The Rose Tree". It consists of four systems of music, each with a treble and bass staff. The melody is written in the treble staff, and the accompaniment is in the bass staff. The score is divided into four measures, each starting with a measure number: 70, 73, 76, and 79. The notes are color-coded: green for the melody, red for the accompaniment, and blue for the bass line. The key signature is one flat (B-flat), and the time signature is 4/4. The melody is a simple, catchy tune, and the accompaniment provides a steady, rhythmic foundation. The bass line is a simple, steady pattern that complements the melody.

82

Measures 82-84. Treble clef: Melody with eighth and sixteenth notes, some beamed. Bass clef: Simple accompaniment of quarter and eighth notes. Measure 84 ends with a repeat sign.

85

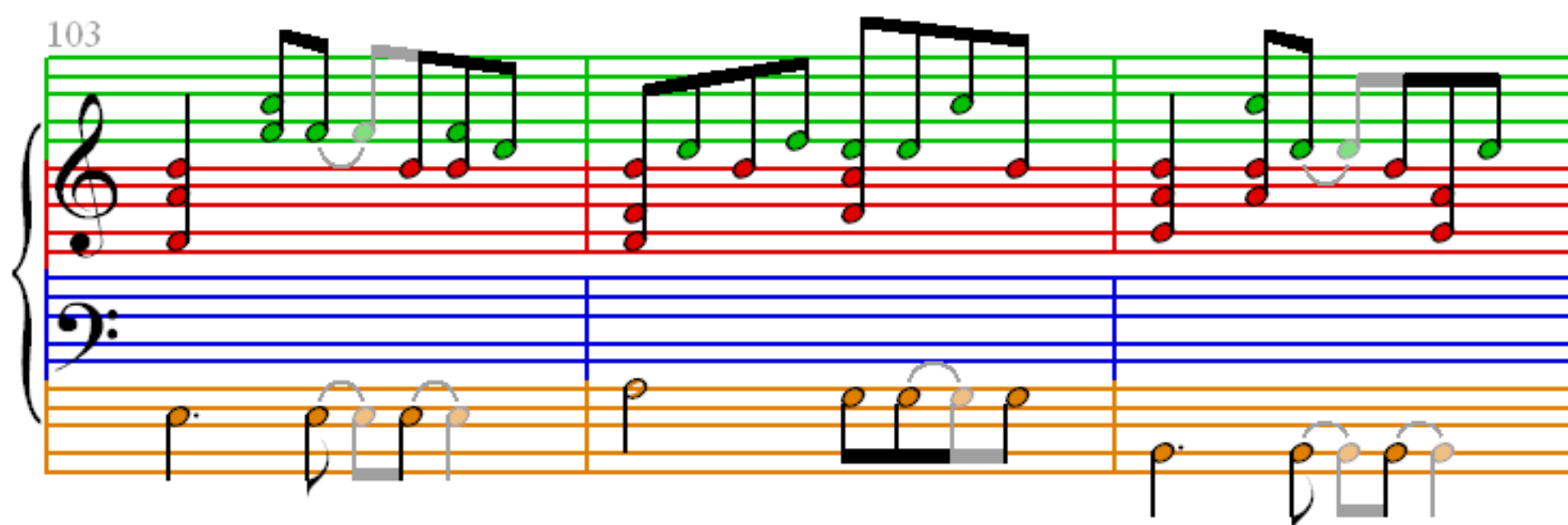
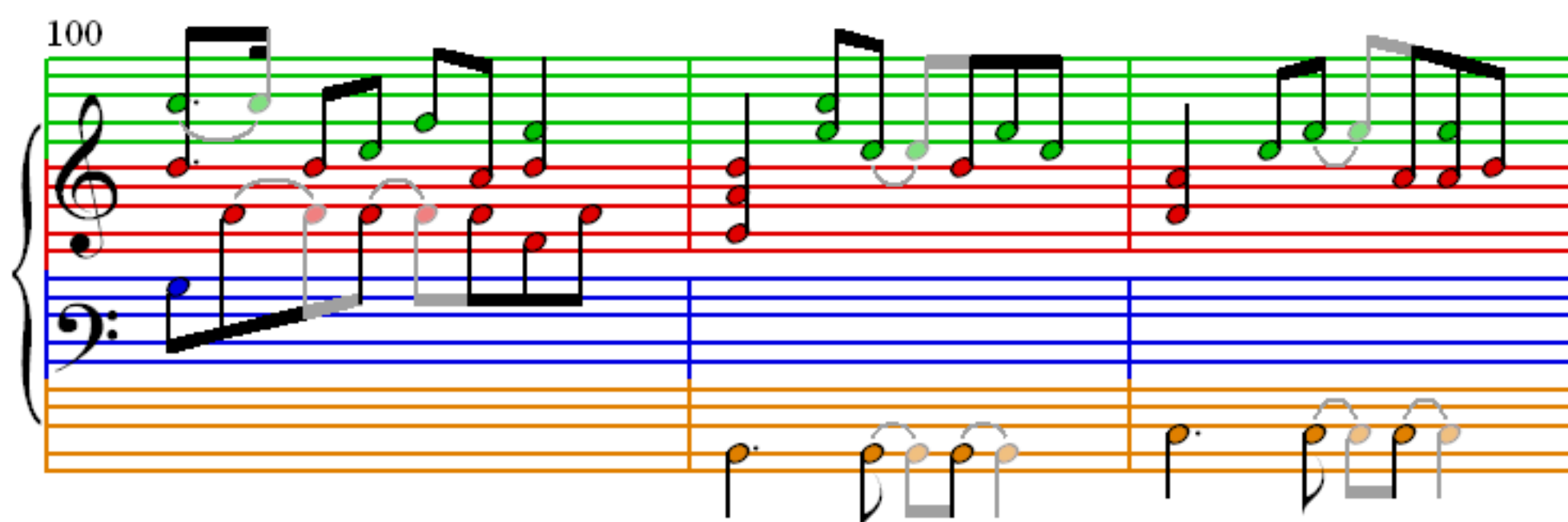
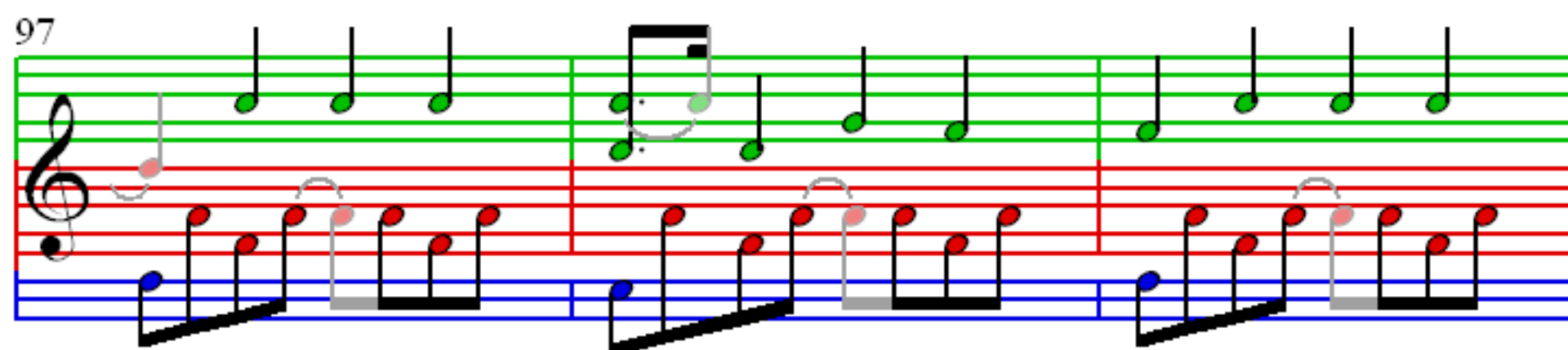
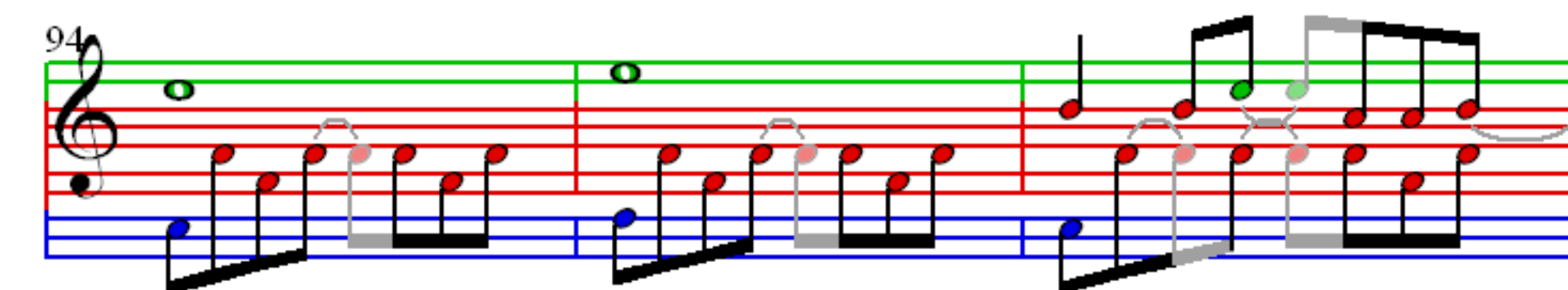
Measures 85-87. Treble clef: Continues the melody. Bass clef: Continues the accompaniment. Measure 87 ends with a repeat sign.

88

Measures 88-90. Treble clef: Continues the melody. Bass clef: Continues the accompaniment. Measure 90 ends with a repeat sign.

91

Measures 91-93. Treble clef: Continues the melody. Bass clef: Continues the accompaniment. Measure 93 ends with a repeat sign.



106

Measures 106-108. Treble clef: Measure 106 has a half note G4, quarter notes A4, B4, C5, D5, E5, F5, G5. Measure 107 has a half note G4, quarter notes A4, B4, C5, D5, E5, F5, G5. Measure 108 has a half note G4, quarter notes A4, B4, C5, D5, E5, F5, G5. Bass clef: Measure 106 has a half note G2, quarter notes A2, B2, C3, D3, E3, F3, G3. Measure 107 has a half note G2, quarter notes A2, B2, C3, D3, E3, F3, G3. Measure 108 has a half note G2, quarter notes A2, B2, C3, D3, E3, F3, G3.

109

Measures 109-111. Treble clef: Measure 109 has a half note G4, quarter notes A4, B4, C5, D5, E5, F5, G5. Measure 110 has a half note G4, quarter notes A4, B4, C5, D5, E5, F5, G5. Measure 111 has a half note G4, quarter notes A4, B4, C5, D5, E5, F5, G5. Bass clef: Measure 109 has a half note G2, quarter notes A2, B2, C3, D3, E3, F3, G3. Measure 110 has a half note G2, quarter notes A2, B2, C3, D3, E3, F3, G3. Measure 111 has a half note G2, quarter notes A2, B2, C3, D3, E3, F3, G3.

112

Measures 112-114. Treble clef: Measure 112 has a half note G4, quarter notes A4, B4, C5, D5, E5, F5, G5. Measure 113 has a half note G4, quarter notes A4, B4, C5, D5, E5, F5, G5. Measure 114 has a half note G4, quarter notes A4, B4, C5, D5, E5, F5, G5. Bass clef: Measure 112 has a half note G2, quarter notes A2, B2, C3, D3, E3, F3, G3. Measure 113 has a half note G2, quarter notes A2, B2, C3, D3, E3, F3, G3. Measure 114 has a half note G2, quarter notes A2, B2, C3, D3, E3, F3, G3.

115

Measures 115-117. Treble clef: Measure 115 has a half note G4, quarter notes A4, B4, C5, D5, E5, F5, G5. Measure 116 has a half note G4, quarter notes A4, B4, C5, D5, E5, F5, G5. Measure 117 has a half note G4, quarter notes A4, B4, C5, D5, E5, F5, G5. Bass clef: Measure 115 has a half note G2, quarter notes A2, B2, C3, D3, E3, F3, G3. Measure 116 has a half note G2, quarter notes A2, B2, C3, D3, E3, F3, G3. Measure 117 has a half note G2, quarter notes A2, B2, C3, D3, E3, F3, G3.

