

Sonate 15 - Rondo

♩ = 120

1

Beethoven

Measures 1-4 of the Rondo section. The treble clef staff is in 6/8 time, with a key signature of one flat (B-flat). The bass clef staff is in 6/8 time. The melody in the treble clef starts with a whole rest, followed by a quarter note G4, a quarter note A4, a quarter note B4, a quarter note C5, a quarter note B4, a quarter note A4, and a quarter note G4. The bass clef staff has a steady eighth-note accompaniment: G3, A3, B3, C4, B3, A3, G3.

5

Measures 5-8 of the Rondo section. The treble clef staff continues the melody from measure 4. The bass clef staff continues the eighth-note accompaniment.

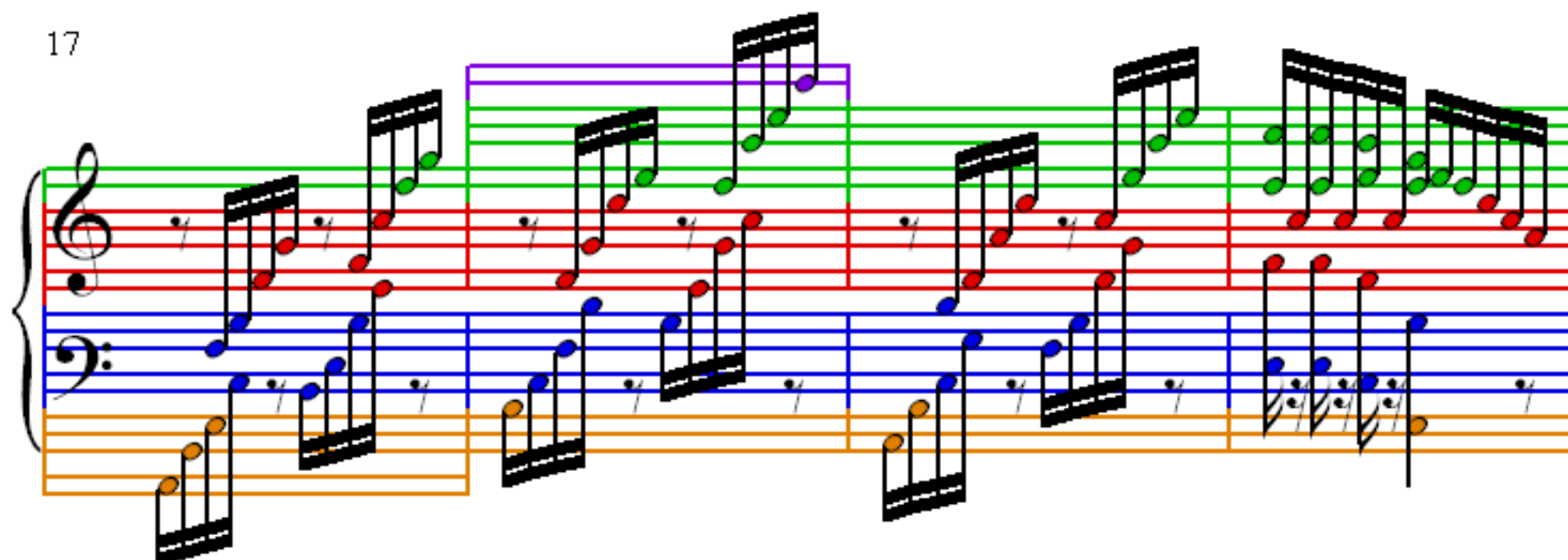
9

Measures 9-12 of the Rondo section. The treble clef staff has a new melody: quarter note G4, quarter note A4, quarter note B4, quarter note C5, quarter note B4, quarter note A4, quarter note G4, quarter note F#4. The bass clef staff continues the eighth-note accompaniment.

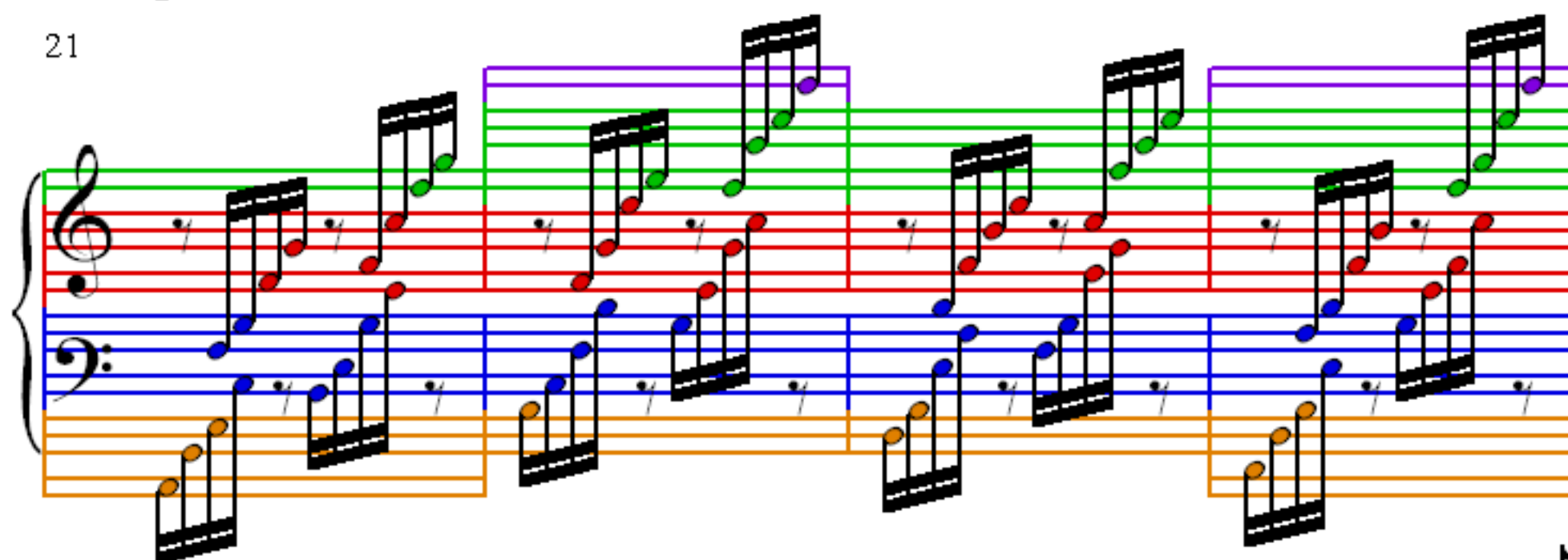
13

Measures 13-16 of the Rondo section. The treble clef staff has a new melody: quarter note G4, quarter note A4, quarter note B4, quarter note C5, quarter note B4, quarter note A4, quarter note G4, quarter note F#4. The bass clef staff continues the eighth-note accompaniment.

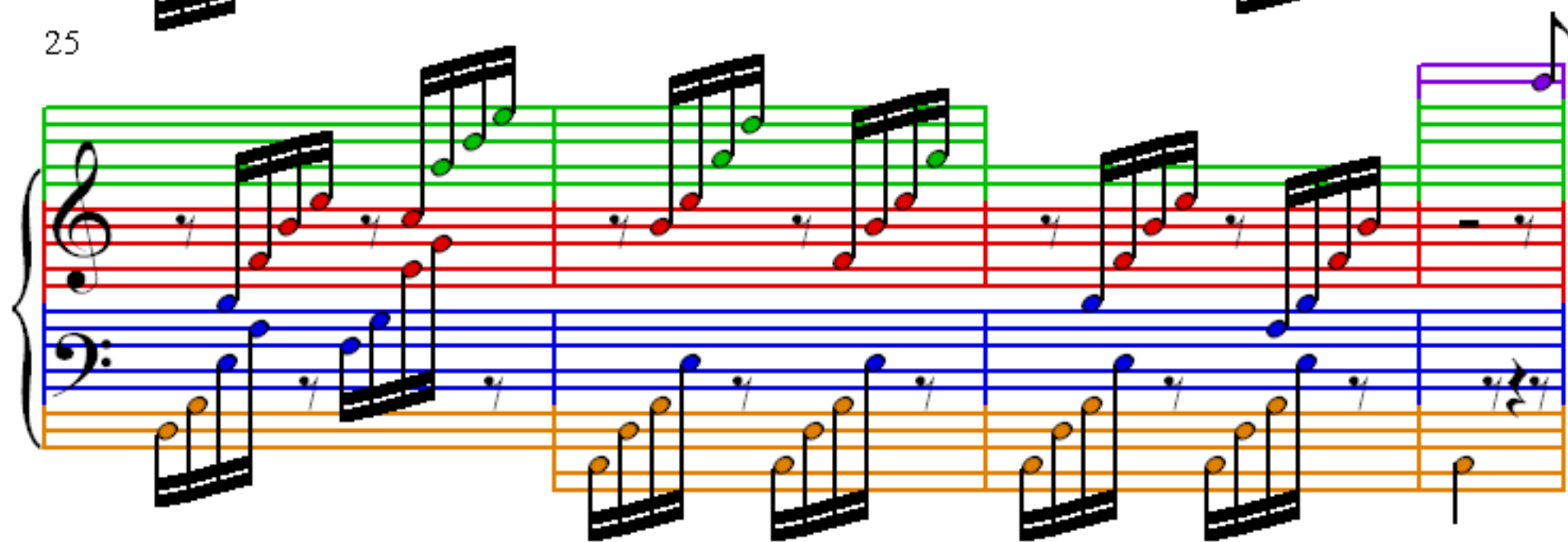
17



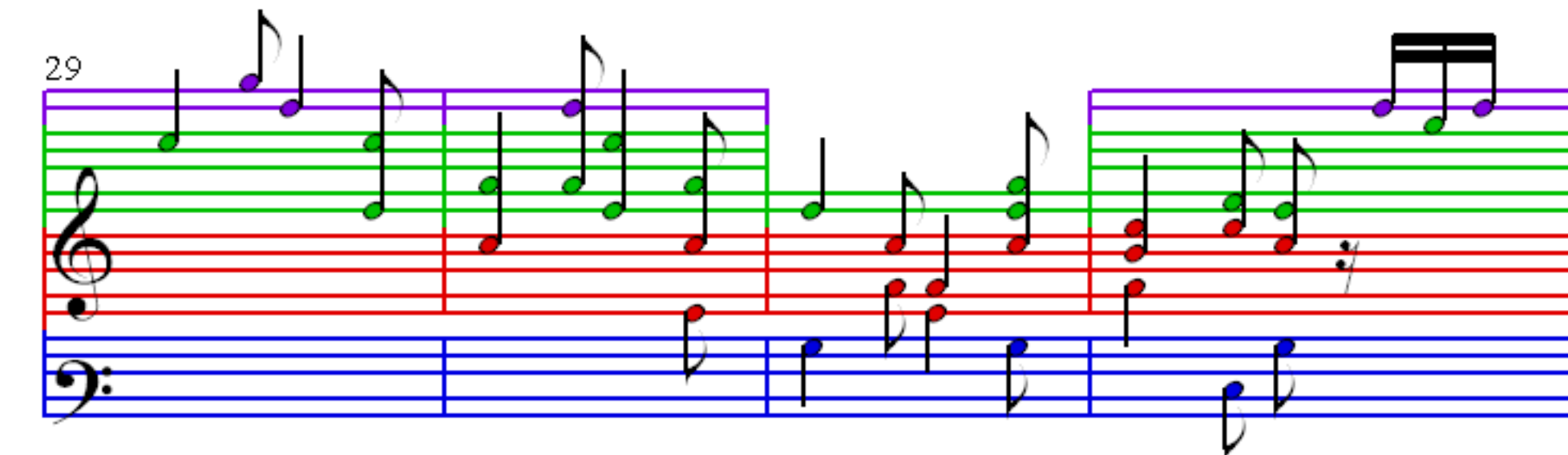
21



25



29



33

37

41

45

49

Measures 49-52. Treble clef: whole rest (49), half note G4 (50), half note F#4 (51), whole rest (52). Bass clef: half note E3 (49), half note D3 (50), half note C3 (51), whole rest (52).

53

Measures 53-56. Treble clef: half note G4 (53), half note F#4 (54), half note E4 (55), whole rest (56). Bass clef: half note B2 (53), half note A2 (54), half note G2 (55), whole rest (56).

57

Measures 57-60. Treble clef: half note G4 (57), half note F#4 (58), half note E4 (59), whole rest (60). Bass clef: half note B2 (57), half note A2 (58), half note G2 (59), whole rest (60).

61

Measures 61-64. Treble clef: half note G4 (61), half note F#4 (62), half note E4 (63), whole rest (64). Bass clef: half note B2 (61), half note A2 (62), half note G2 (63), whole rest (64).

65

Measures 65-68. Treble clef: eighth notes. Bass clef: sixteenth notes. Includes a third staff with whole notes.

69

Measures 69-72. Treble clef: eighth notes. Bass clef: sixteenth notes. Includes a third staff with whole notes.

73

Measures 73-76. Treble clef: eighth notes. Bass clef: sixteenth notes. Includes a third staff with whole notes.

77

Measures 77-80. Treble clef: eighth notes. Bass clef: sixteenth notes. Includes a third staff with whole notes.

81

Measures 81-84. Treble clef: eighth notes. Bass clef: sixteenth notes. Includes a third staff with whole notes.

85

89

93

97

101

Measures 101-104. The treble staff contains a continuous eighth-note pattern with a black beam. The bass staff provides a simple harmonic accompaniment with quarter notes and eighth notes. The notes are color-coded: green for the treble and blue/orange for the bass.

105

Measures 105-108. The treble staff continues the eighth-note pattern, which concludes with a descending scale in measure 108. The bass staff continues its accompaniment, featuring a long, sustained note in measure 108.

109

Measures 109-112. The treble staff features a more complex melodic line with slurs and ties. The bass staff continues with a steady eighth-note accompaniment. The notes are color-coded: green for the treble and blue/orange for the bass.

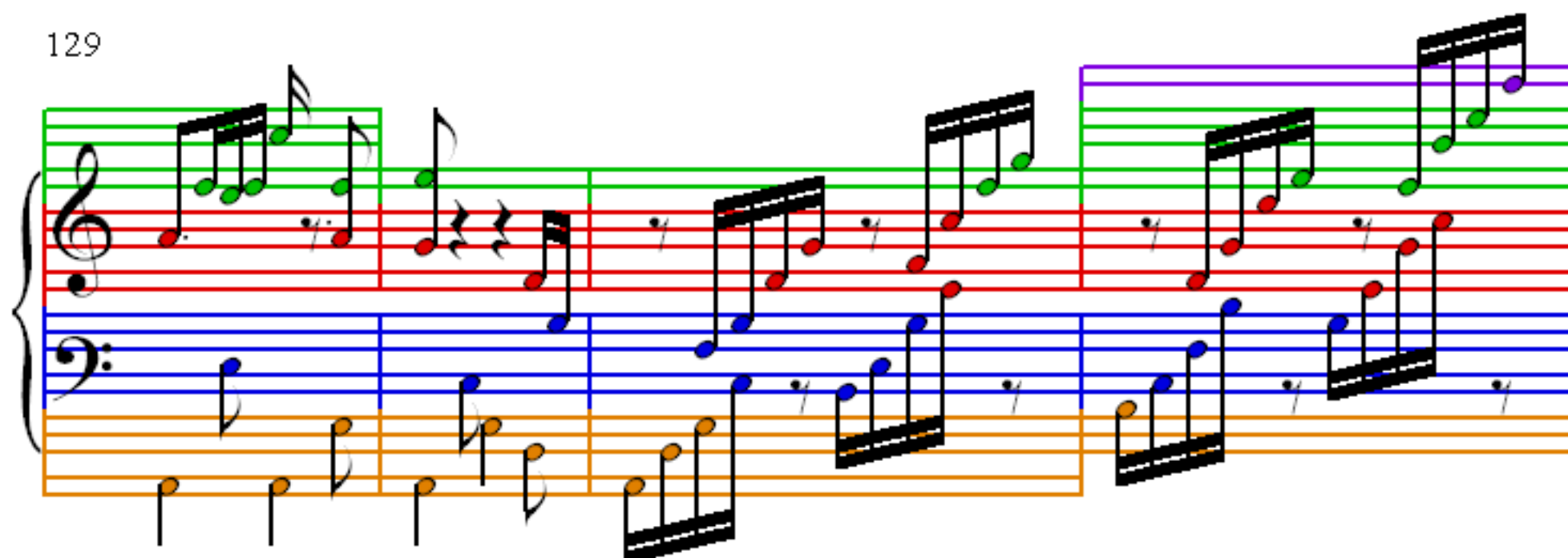
113

117

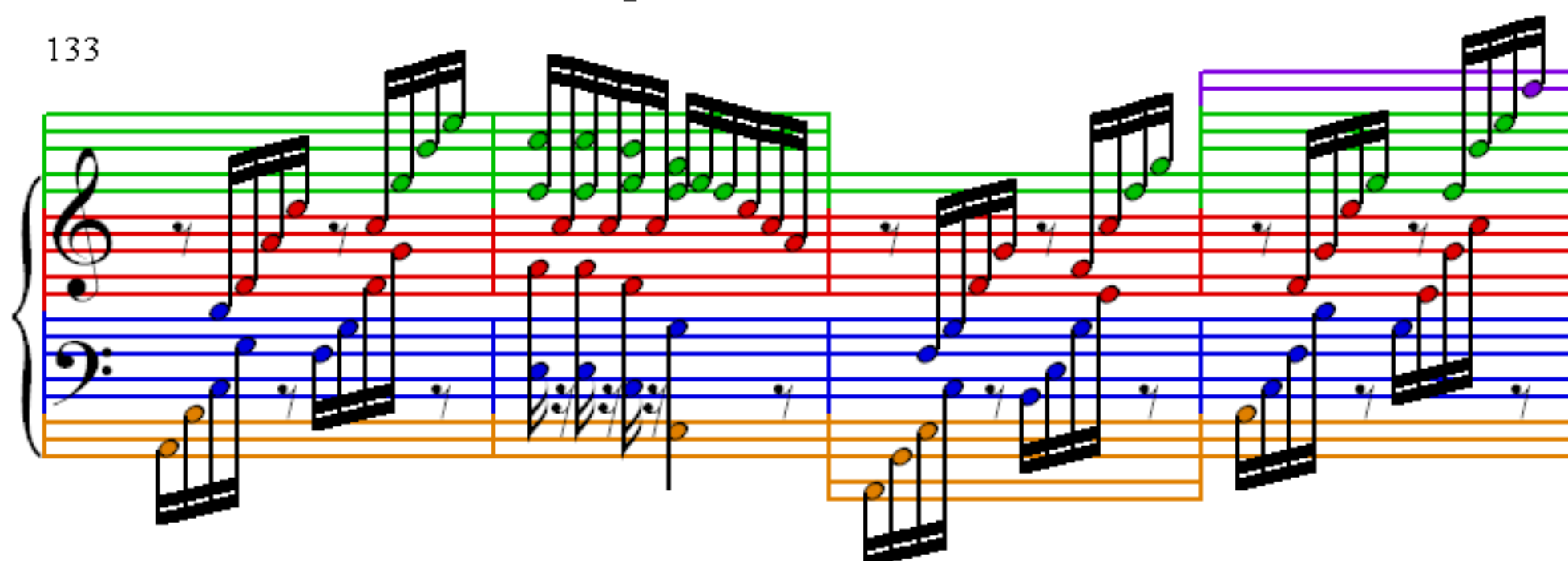
121

125

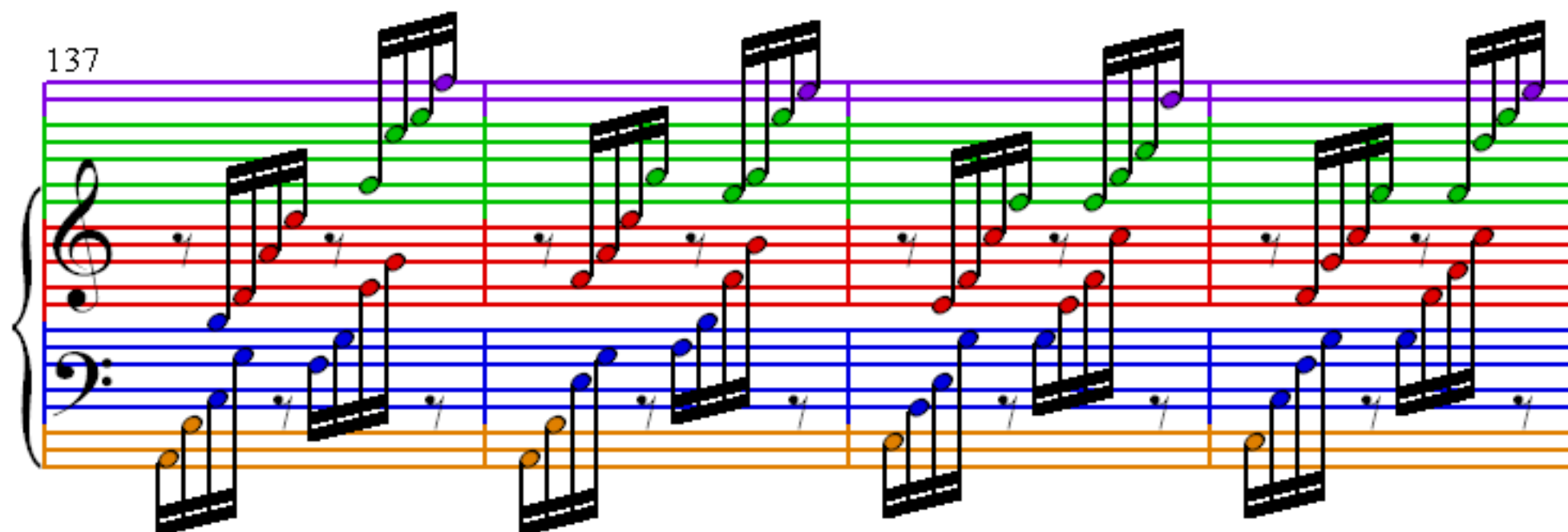
129



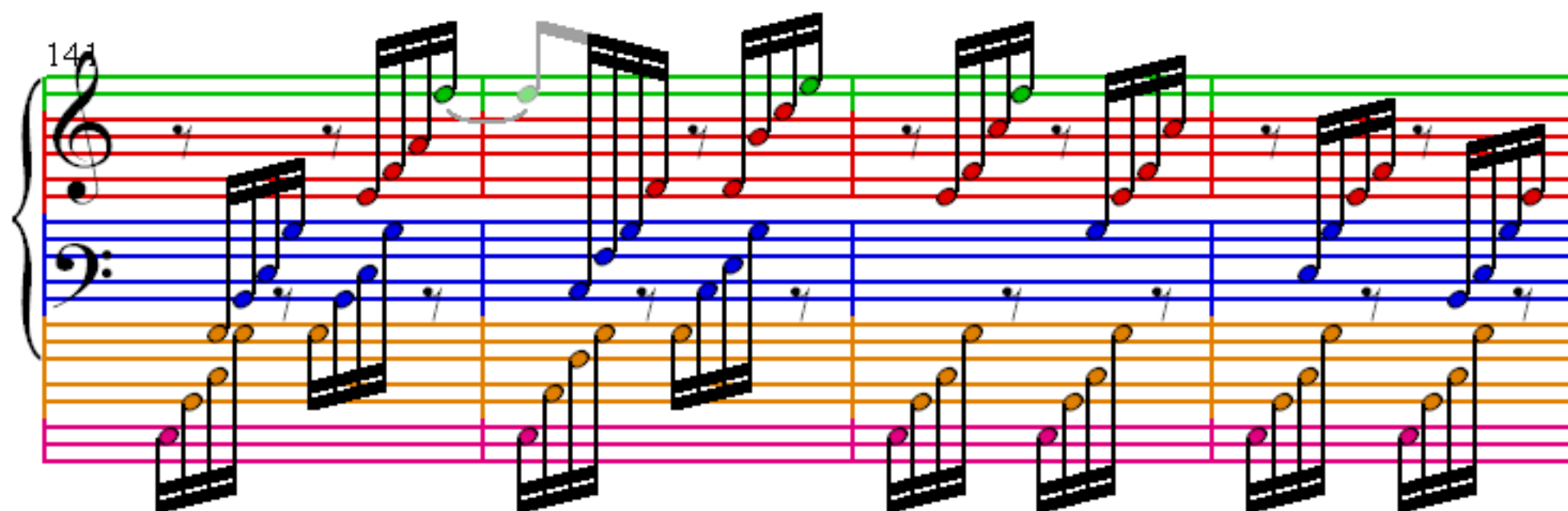
133



137



141



145

Measures 145-148. Treble clef: m145 (whole rest), m146 (quarter, eighth, eighth), m147 (quarter, eighth, eighth), m148 (quarter, eighth, eighth). Bass clef: m145 (quarter, quarter), m146 (quarter, quarter), m147 (quarter, quarter), m148 (quarter, quarter). Pink staff: m145 (single note).

149

Measures 149-152. Treble clef: m149 (eighth, eighth, eighth, eighth), m150 (eighth, eighth, eighth, eighth), m151 (eighth, eighth, eighth, eighth), m152 (eighth, eighth, eighth, eighth). Bass clef: m149 (eighth, eighth, eighth, eighth), m150 (eighth, eighth, eighth, eighth), m151 (eighth, eighth, eighth, eighth), m152 (eighth, eighth, eighth, eighth). Pink staff: m149 (single note).

153

Measures 153-156. Treble clef: m153 (eighth, eighth, eighth, eighth), m154 (eighth, eighth, eighth, eighth), m155 (eighth, eighth, eighth, eighth), m156 (eighth, eighth, eighth, eighth). Bass clef: m153 (eighth, eighth, eighth, eighth), m154 (eighth, eighth, eighth, eighth), m155 (eighth, eighth, eighth, eighth), m156 (eighth, eighth, eighth, eighth). Pink staff: m153 (single note).

157

Measures 157-160. Treble clef: m157 (eighth, eighth, eighth, eighth), m158 (eighth, eighth, eighth, eighth), m159 (eighth, eighth, eighth, eighth), m160 (eighth, eighth, eighth, eighth). Bass clef: m157 (eighth, eighth, eighth, eighth), m158 (eighth, eighth, eighth, eighth), m159 (eighth, eighth, eighth, eighth), m160 (eighth, eighth, eighth, eighth). Pink staff: m157 (single note).

161

Measures 161-165. The upper staff contains a rapid, intricate melodic passage with many beamed notes. The lower staff provides a steady accompaniment.

166

Measures 166-170. The melodic line in the upper staff becomes more sparse, with more rests, while the accompaniment in the lower staff remains consistent.

169

Measures 169-173. The melodic line in the upper staff continues with a mix of green and red notes. The accompaniment in the lower staff is steady.

173

Measures 173-177. The melodic line in the upper staff continues with a mix of green and red notes. The accompaniment in the lower staff is steady.

177

Measures 177-180. Treble clef: green eighth notes on a red line. Bass clef: blue eighth notes on a blue line. A pink line at the bottom has orange quarter notes.

181

Measures 181-184. Treble clef: green eighth notes on a red line. Bass clef: blue eighth notes on a blue line. A pink line at the bottom has orange quarter notes.

185

Measures 185-188. Treble clef: green eighth notes on a red line. Bass clef: blue eighth notes on a blue line. A pink line at the bottom has orange quarter notes.

189

Handwritten musical notation for measures 189-192. The system consists of a grand staff with a treble clef and a bass clef. The right hand (treble) features a series of eighth-note chords, with some notes highlighted in green and purple. The left hand (bass) features a series of eighth-note chords, with some notes highlighted in blue and orange. The notation is written on a five-line staff with a red line and a green line. The measures are separated by vertical bar lines.

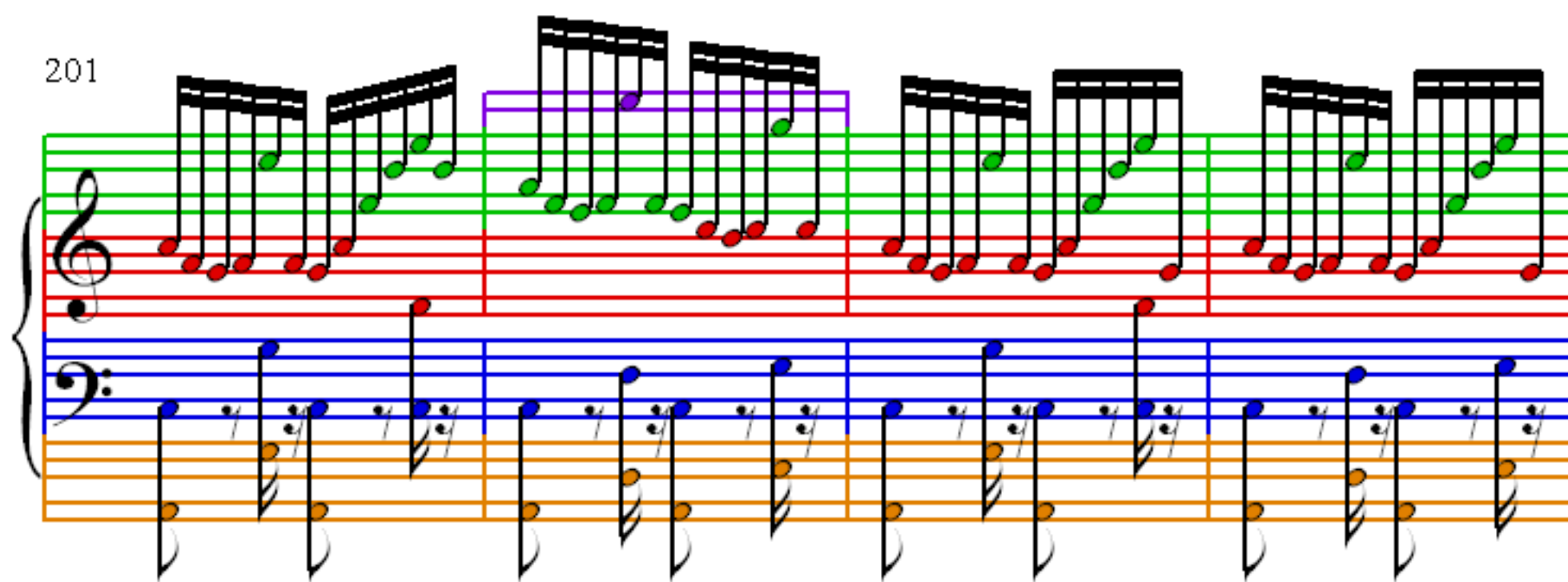
193

Handwritten musical notation for measures 193-196. The system consists of a grand staff with a treble clef and a bass clef. The right hand (treble) features a series of eighth-note chords, with some notes highlighted in green and purple. The left hand (bass) features a series of eighth-note chords, with some notes highlighted in blue and orange. The notation is written on a five-line staff with a red line and a green line. The measures are separated by vertical bar lines.

197

Handwritten musical notation for measures 197-200. The system consists of a grand staff with a treble clef and a bass clef. The right hand (treble) features a series of eighth-note chords, with some notes highlighted in green and purple. The left hand (bass) features a series of eighth-note chords, with some notes highlighted in blue and orange. The notation is written on a five-line staff with a red line and a green line. The measures are separated by vertical bar lines.

201



205

