

Sonate 15 - Andante

Beethoven

The image displays the first ten measures of Beethoven's Sonata 15, Andante. The score is written for piano in 2/4 time, featuring a treble and bass staff joined by a brace. The notation is color-coded: treble clef notes are red, bass clef notes are blue, and the piano accompaniment in the bass staff is orange. Measure numbers 1, 4, 7, and 10 are indicated at the start of their respective systems. The music consists of a simple melody in the treble and a steady eighth-note accompaniment in the bass. Measure 7 includes a pink highlight on the bass staff. Measure 10 features a grey highlight on the treble staff and a pink highlight on the bass staff.

13

Measures 13-15. Treble clef: Measure 13 has a chord (F4, A4, C5) with a green dot on F4. Measure 14 has a chord (G4, B4, D5) with a red dot on G4. Measure 15 has a chord (A4, C5, E5) with a green dot on A4. Bass clef: Continuous eighth-note pattern starting on C3, moving up stepwise to G3 in measure 15. Notes are colored blue and orange.

16

Measures 16-18. Treble clef: Measure 16 has a chord (F4, A4, C5) with a green dot on F4. Measure 17 has a chord (G4, B4, D5) with a red dot on G4. Measure 18 has a chord (A4, C5, E5) with a green dot on A4. Bass clef: Continuous eighth-note pattern starting on C3, moving up stepwise to G3 in measure 18. Notes are colored blue and orange.

19

Measures 19-21. Treble clef: Measure 19 has a chord (F4, A4, C5) with a green dot on F4. Measure 20 has a chord (G4, B4, D5) with a red dot on G4. Measure 21 has a chord (A4, C5, E5) with a green dot on A4. Bass clef: Continuous eighth-note pattern starting on C3, moving up stepwise to G3 in measure 21. Notes are colored blue and orange.

22

Measures 22-24. Treble clef: Measure 22 has a chord (F4, A4, C5) with a green dot on F4. Measure 23 has a chord (G4, B4, D5) with a red dot on G4. Measure 24 has a chord (A4, C5, E5) with a green dot on A4. Bass clef: Continuous eighth-note pattern starting on C3, moving up stepwise to G3 in measure 24. Notes are colored blue and orange.

37

40

43

46

49

52

55

58

61

64

67

70

73

76

79

82

85

Measures 85-87. Treble clef: Green notes. Bass clef: Blue notes. Measure 85: Treble has a half note G4, bass has a half note C3. Measure 86: Treble has a half note A4, bass has a half note D3. Measure 87: Treble has a half note B4, bass has a half note E3.

88

Measures 88-90. Treble clef: Green notes. Bass clef: Blue notes. Measure 88: Treble has a half note C5, bass has a half note F3. Measure 89: Treble has a half note D5, bass has a half note G3. Measure 90: Treble has a half note E5, bass has a half note A3.

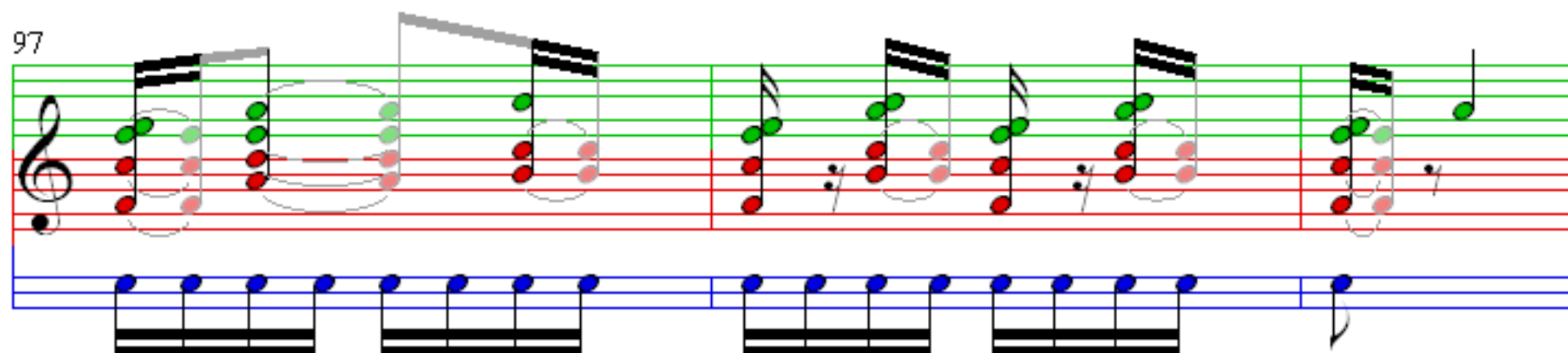
91

Measures 91-93. Treble clef: Green notes. Bass clef: Blue notes. Measure 91: Treble has a half note F5, bass has a half note B3. Measure 92: Treble has a half note G5, bass has a half note C4. Measure 93: Treble has a half note A5, bass has a half note D4.

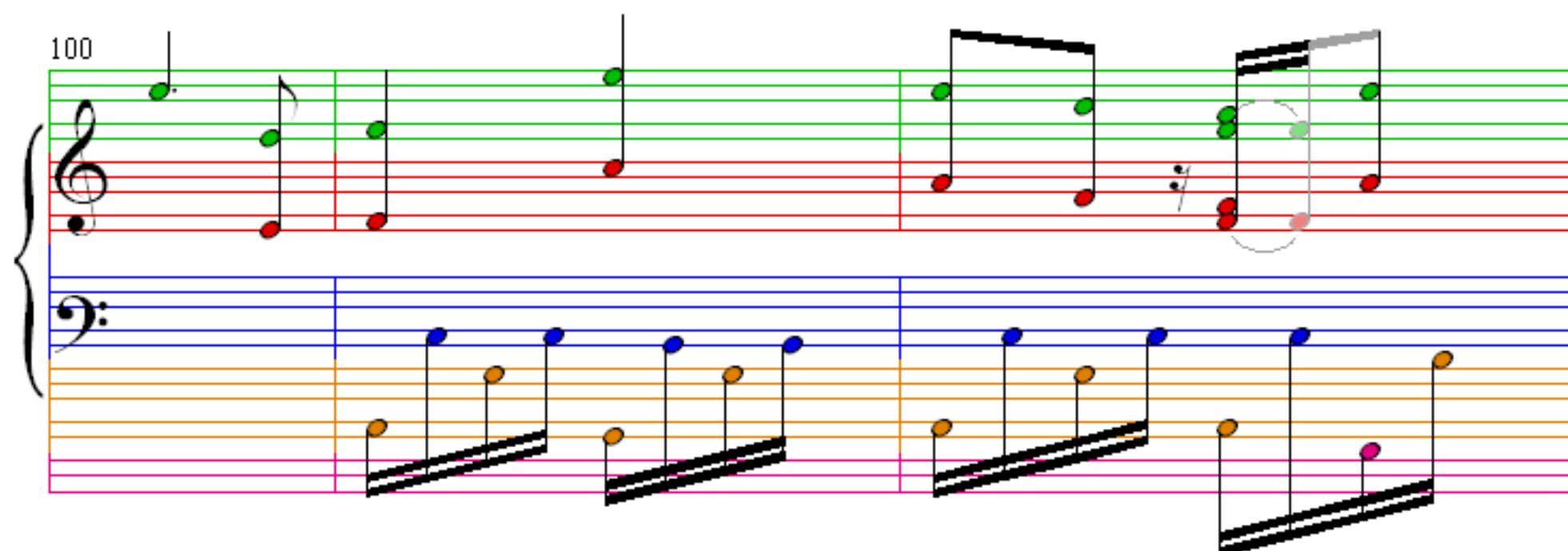
94

Measures 94-96. Treble clef: Green notes. Bass clef: Blue notes. Measure 94: Treble has a half note B5, bass has a half note E4. Measure 95: Treble has a half note C6, bass has a half note F4. Measure 96: Treble has a half note D6, bass has a half note G4.

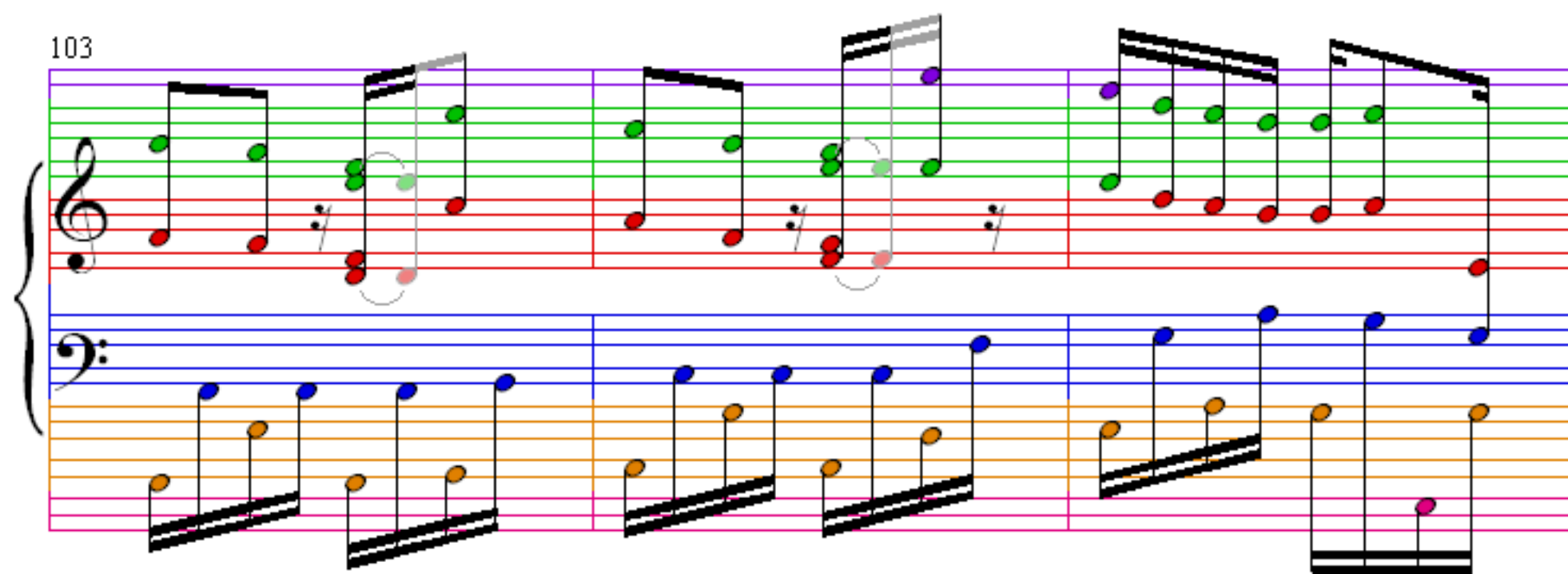
97



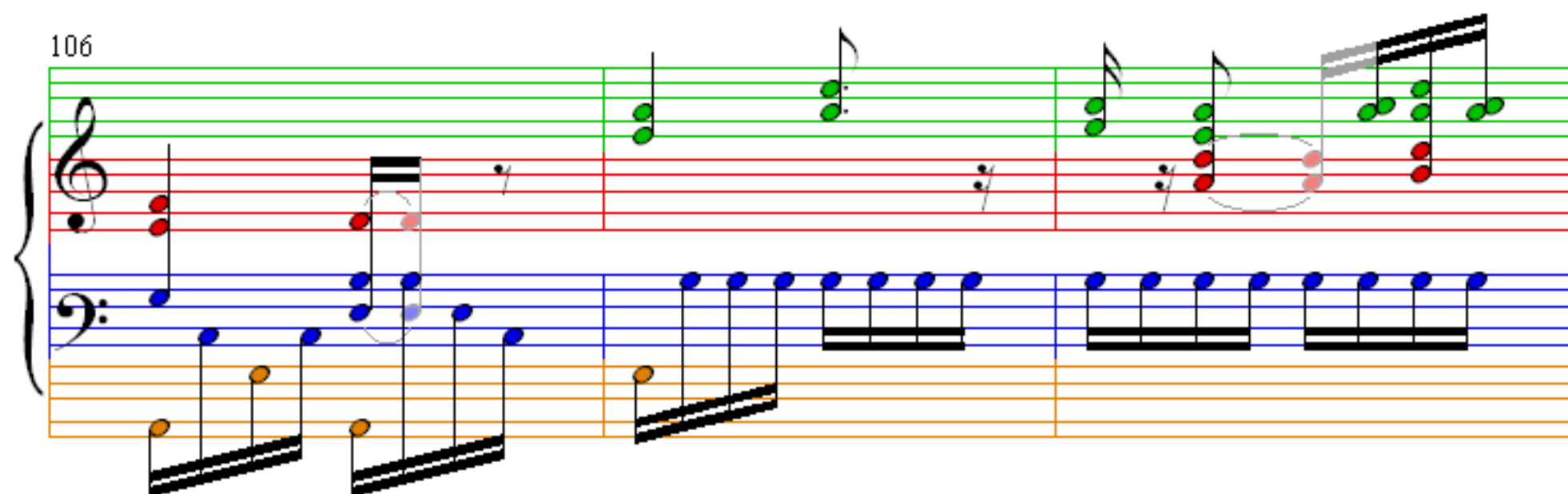
100



103



106



109

112

115

118

121

125

129

133