

When I'm Sixty Four

The Beatles

1

5

9

13

The image displays the first 16 measures of the piano introduction to 'When I'm Sixty Four' by The Beatles. The notation is presented in four systems, each with a measure number (1, 5, 9, 13) at the beginning. Each system consists of a grand staff with a treble and bass clef. The treble staff has a key signature of one sharp (F#) and a 4/4 time signature. The bass staff has a key signature of one flat (Bb). The notes are color-coded: red for the right hand (treble staff) and blue for the left hand (bass staff). The notation includes various musical symbols such as eighth notes, quarter notes, and half notes, as well as rests and accidentals. The first system (measures 1-4) shows the initial key signature change from one sharp to one flat. The second system (measures 5-8) continues the melody. The third system (measures 9-12) shows a change in the bass line. The fourth system (measures 13-16) concludes the first section with a final chord.

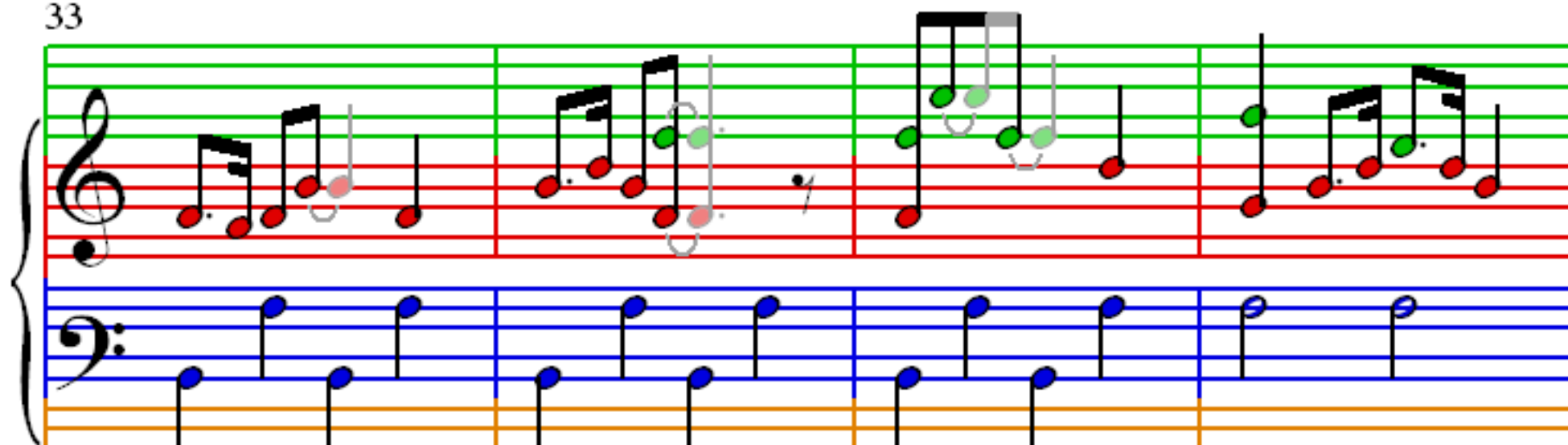
17

21

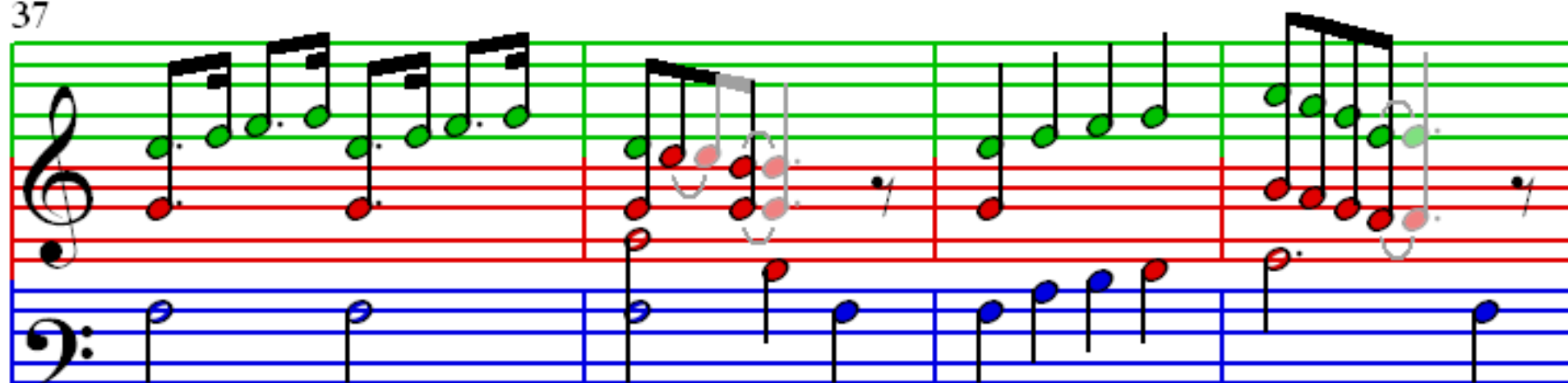
25

29

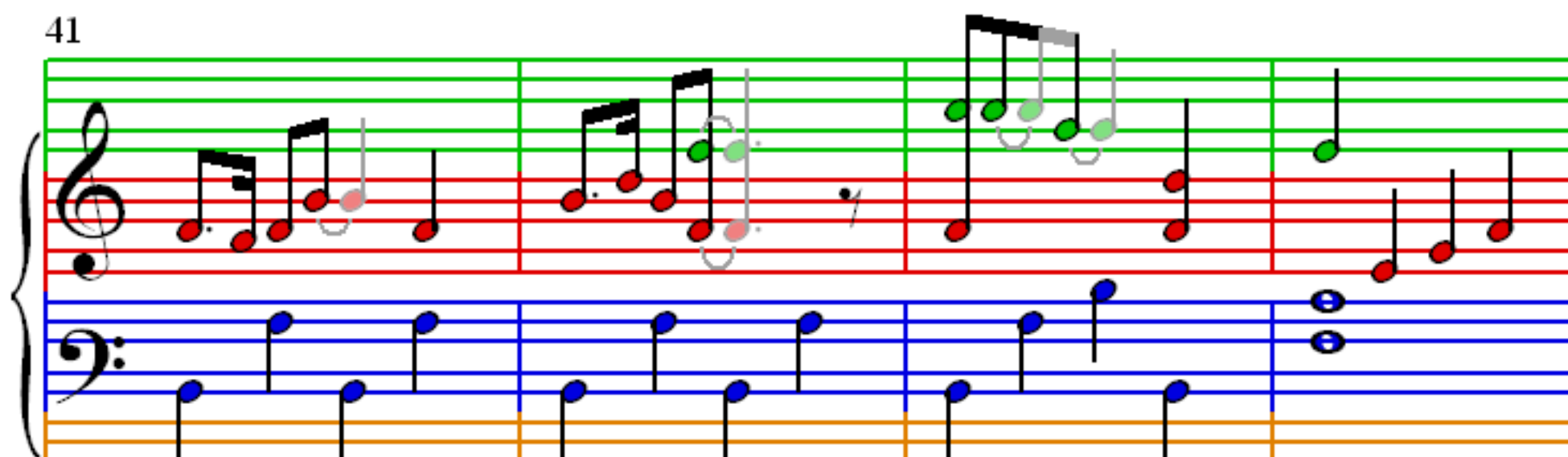
33



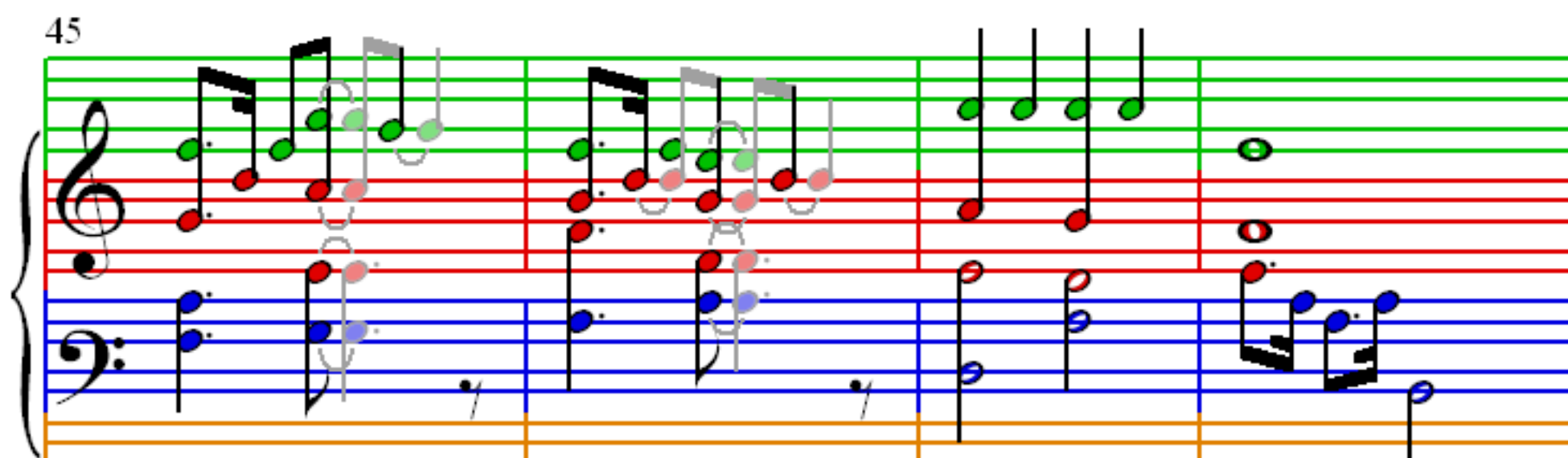
37



41



45



49

Measures 49-52. Treble clef: Measure 49 has a melodic line of eighth notes (G4, A4, B4, C5, B4, A4, G4) and a bass line of chords (F4-A2, C4-E2). Measure 50 continues the melody (F4, E4, D4, C4, B3, A3, G3) with bass chords (F4-A2, C4-E2). Measure 51 has a melody (F4, E4, D4, C4, B3, A3, G3) and bass chords (F4-A2, C4-E2). Measure 52 has a melody (F4, E4, D4, C4, B3, A3, G3) and bass chords (F4-A2, C4-E2).

53

Measures 53-56. Treble clef: Measure 53 has a melody (G4, A4, B4, C5, B4, A4, G4) and bass chords (F4-A2, C4-E2). Measure 54 has a melody (F4, E4, D4, C4, B3, A3, G3) and bass chords (F4-A2, C4-E2). Measure 55 has a melody (F4, E4, D4, C4, B3, A3, G3) and bass chords (F4-A2, C4-E2). Measure 56 has a melody (F4, E4, D4, C4, B3, A3, G3) and bass chords (F4-A2, C4-E2).

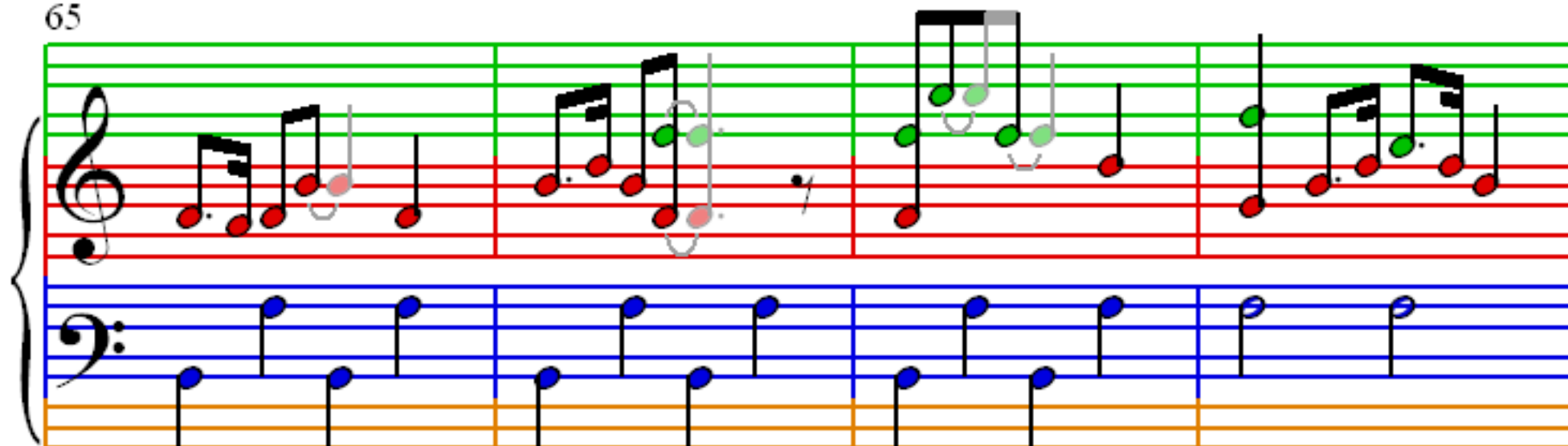
57

Measures 57-60. Treble clef: Measure 57 has a melody (G4, A4, B4, C5, B4, A4, G4) and bass chords (F4-A2, C4-E2). Measure 58 has a melody (F4, E4, D4, C4, B3, A3, G3) and bass chords (F4-A2, C4-E2). Measure 59 has a melody (F4, E4, D4, C4, B3, A3, G3) and bass chords (F4-A2, C4-E2). Measure 60 has a melody (F4, E4, D4, C4, B3, A3, G3) and bass chords (F4-A2, C4-E2).

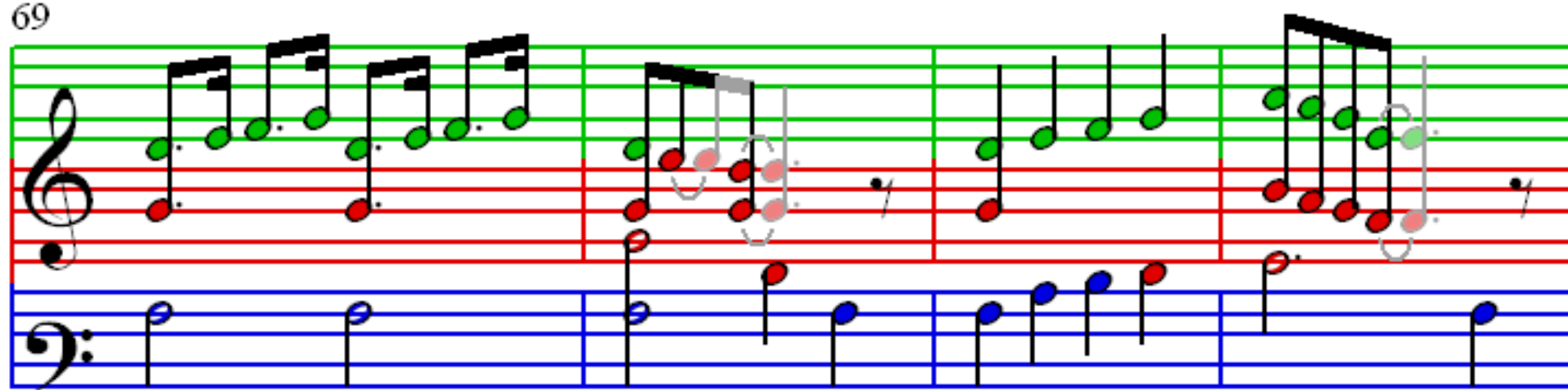
61

Measures 61-64. Treble clef: Measure 61 has a melody (G4, A4, B4, C5, B4, A4, G4) and bass chords (F4-A2, C4-E2). Measure 62 has a melody (F4, E4, D4, C4, B3, A3, G3) and bass chords (F4-A2, C4-E2). Measure 63 has a melody (F4, E4, D4, C4, B3, A3, G3) and bass chords (F4-A2, C4-E2). Measure 64 has a melody (F4, E4, D4, C4, B3, A3, G3) and bass chords (F4-A2, C4-E2).

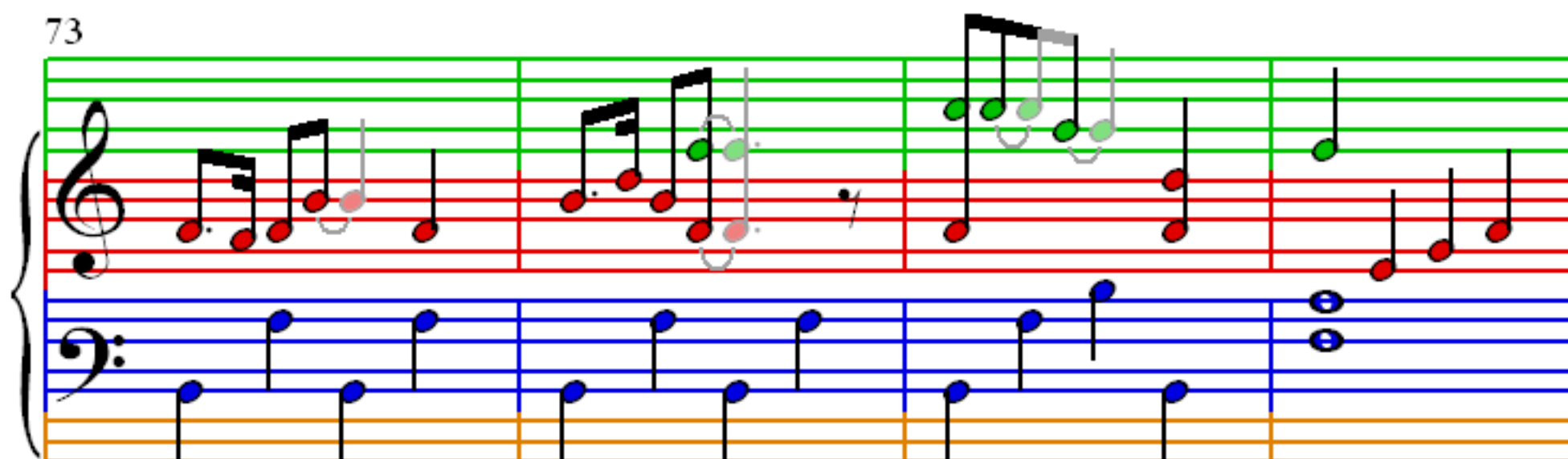
65



69



73



77

