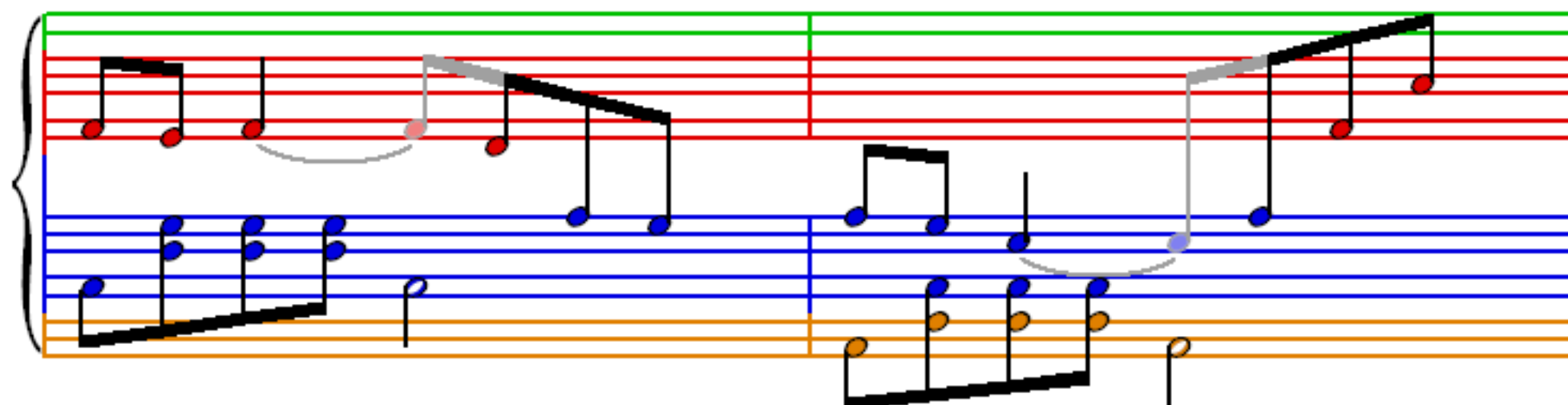
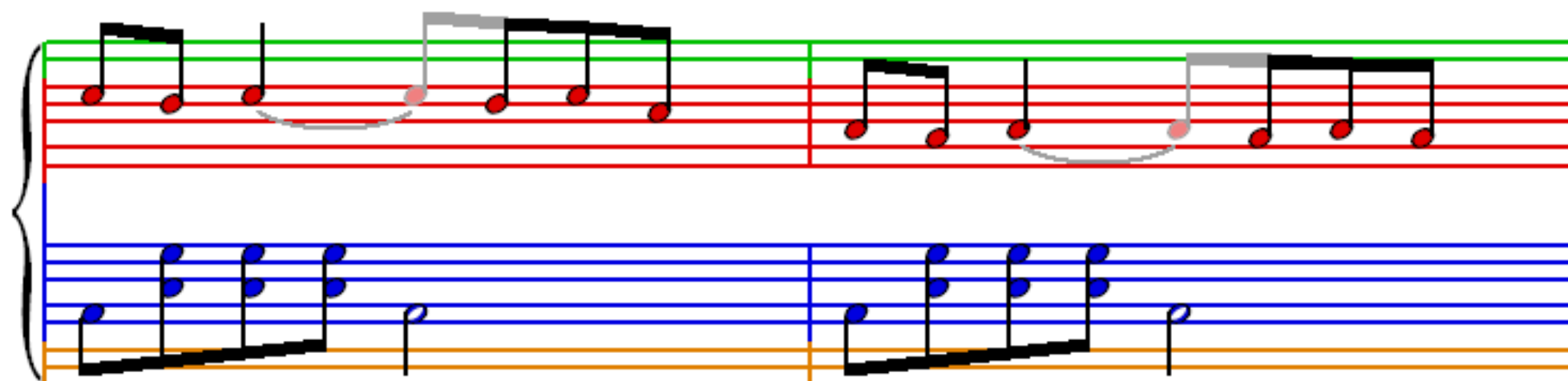
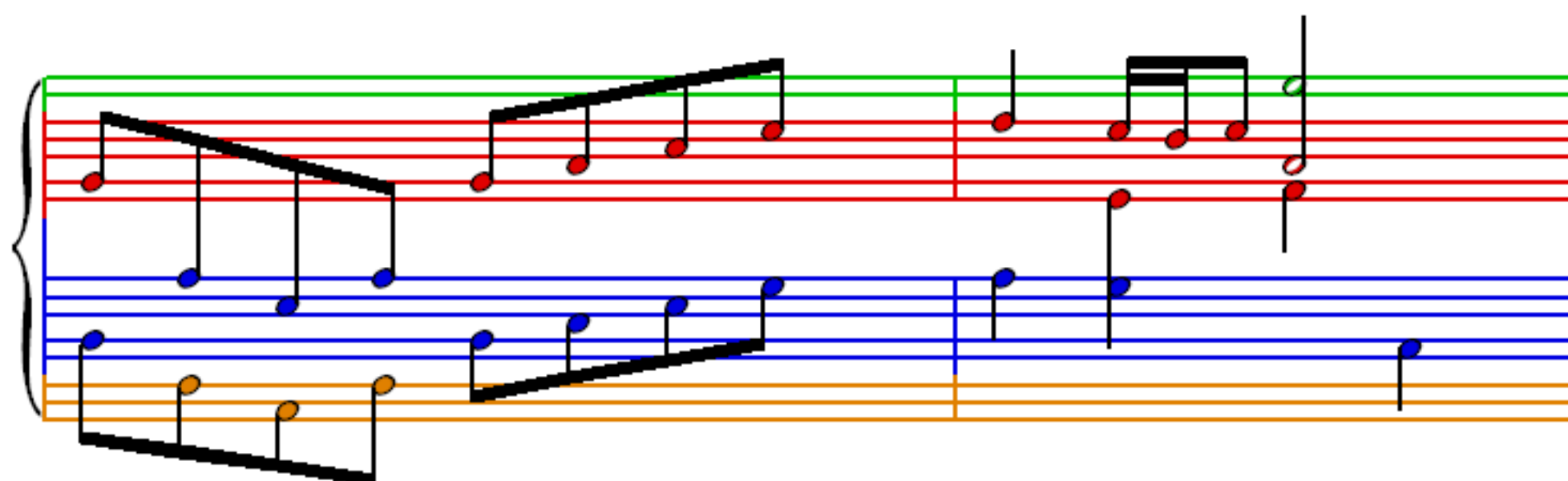
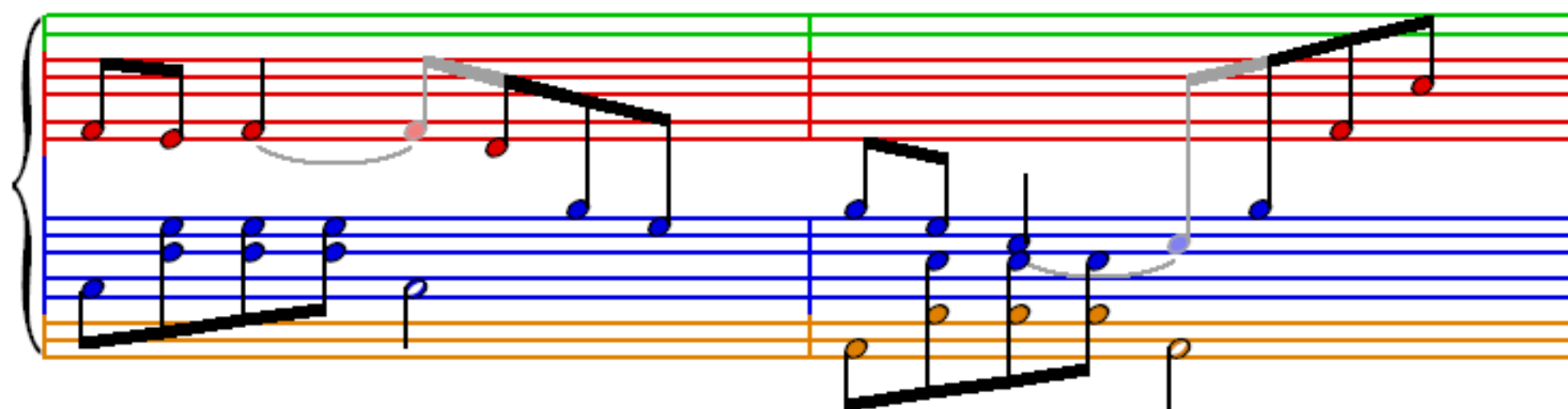
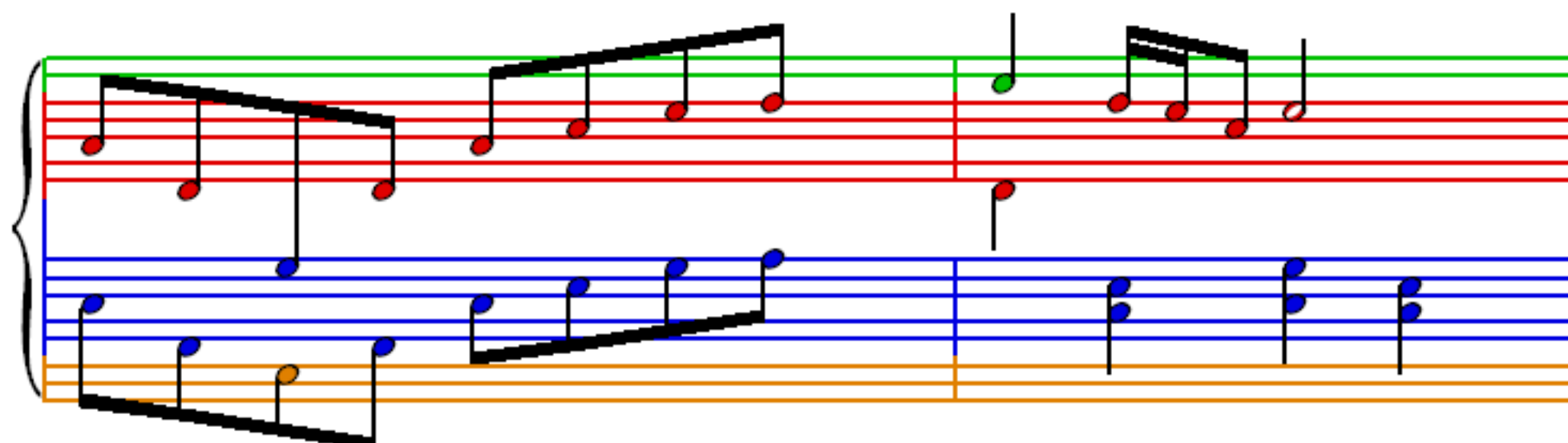
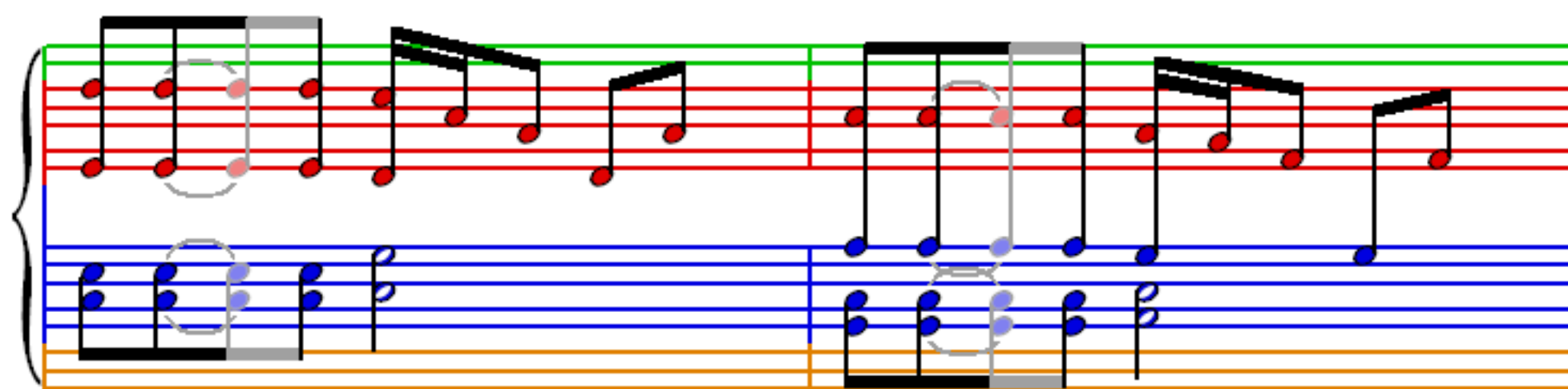
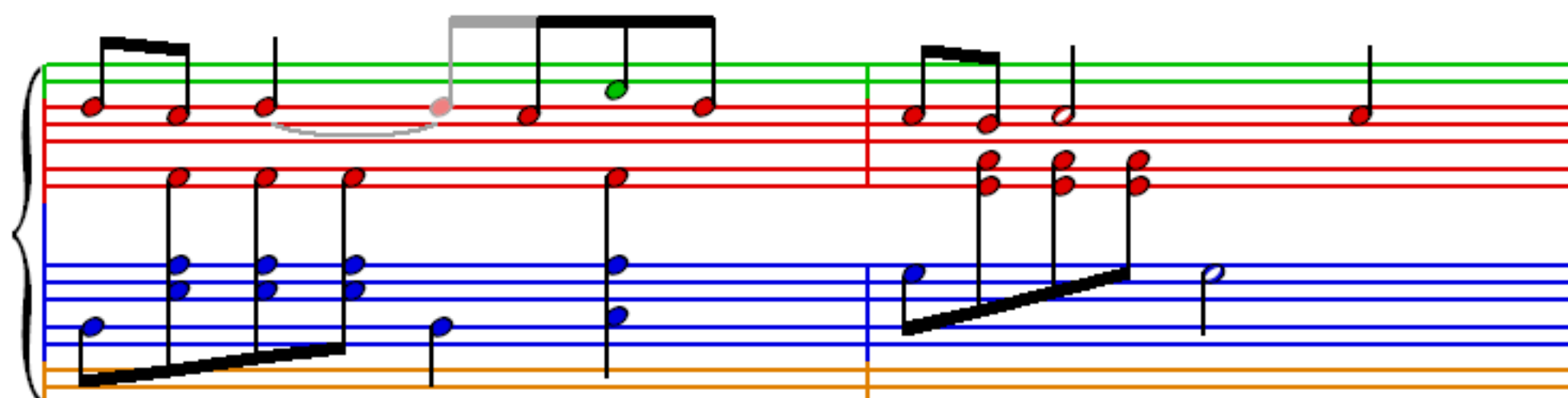
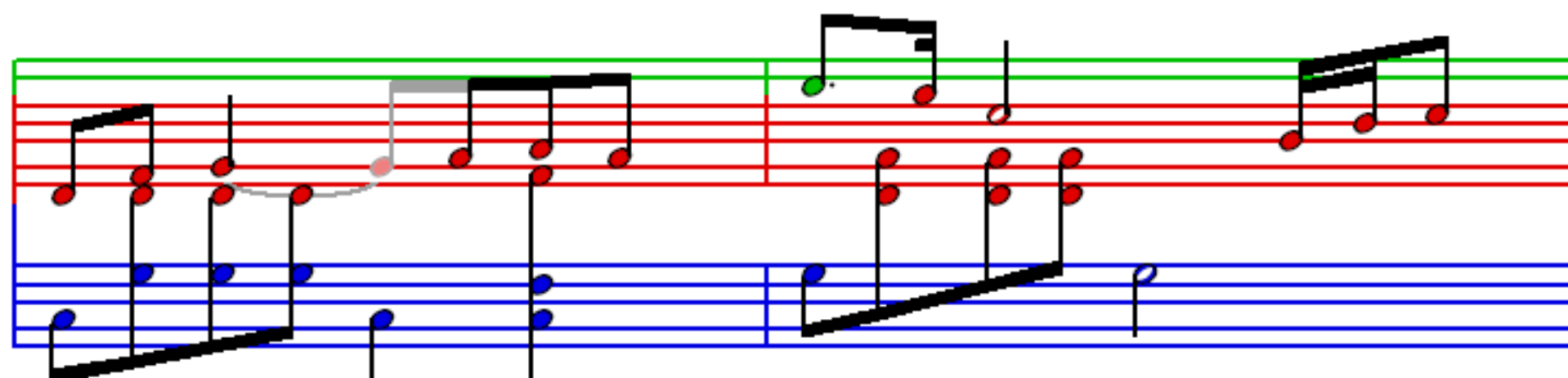
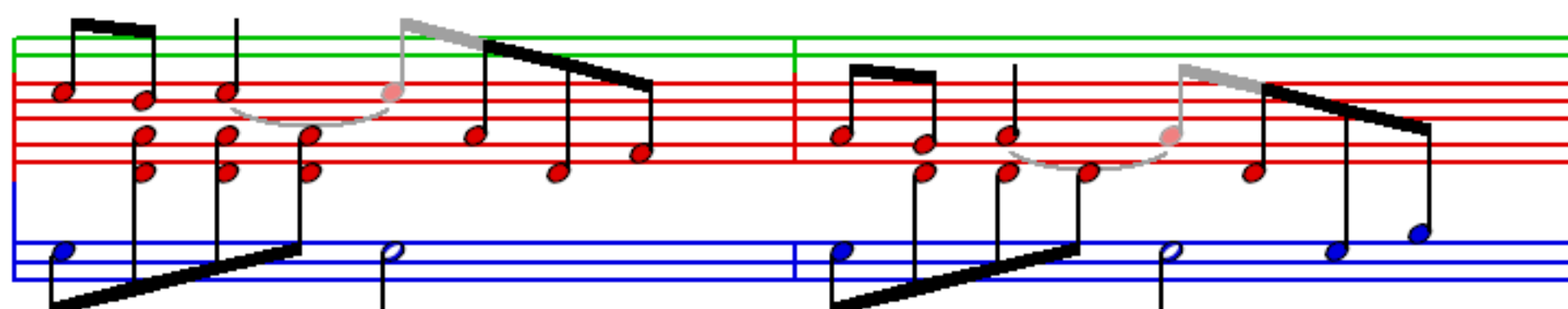
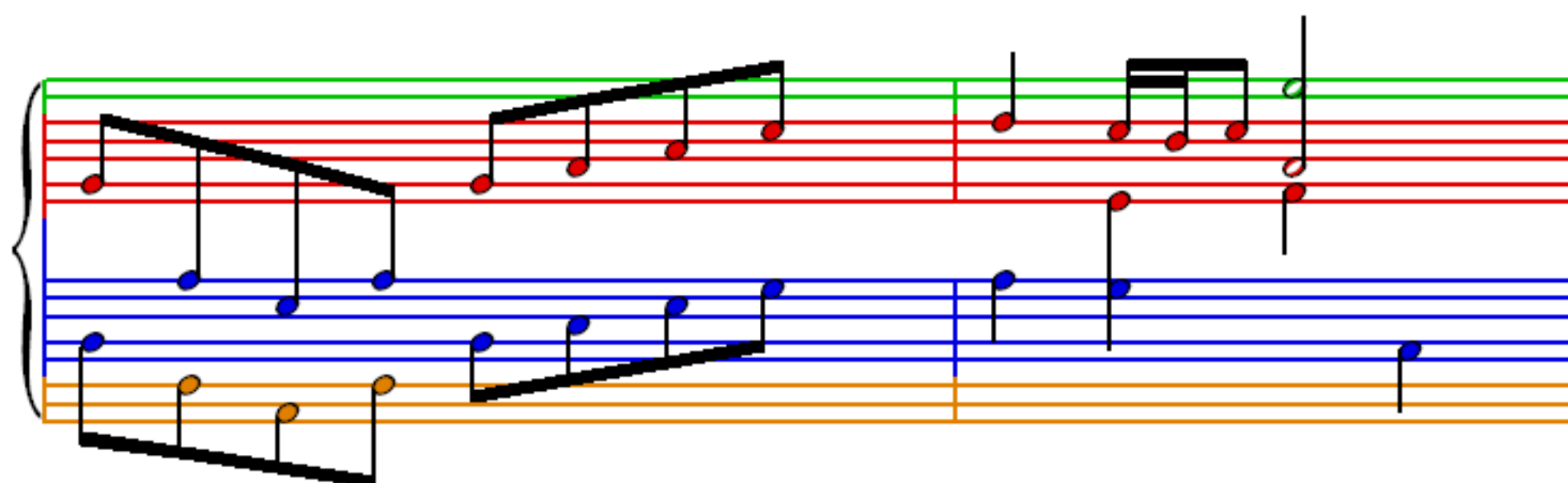
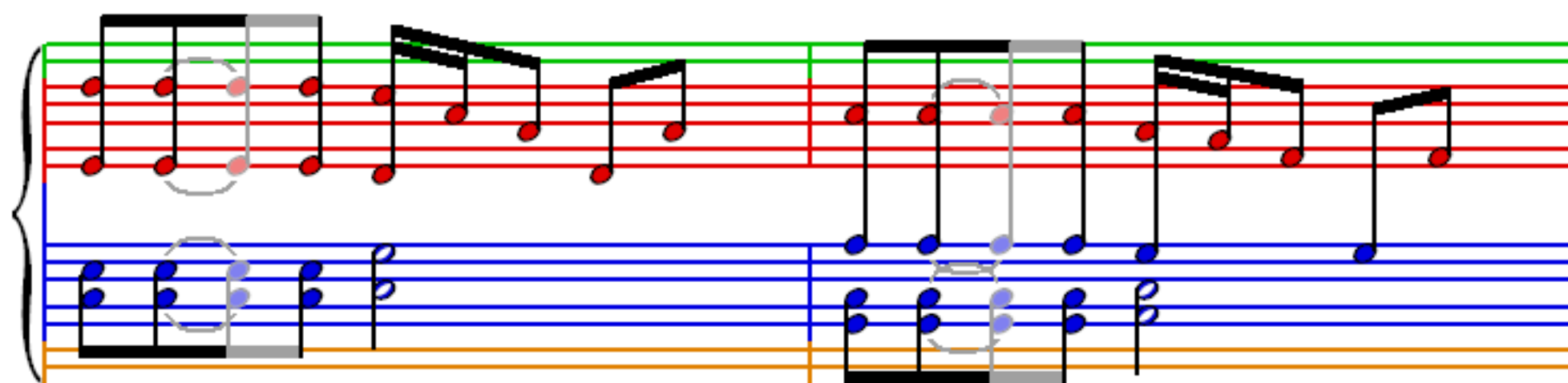


Toreador's Song

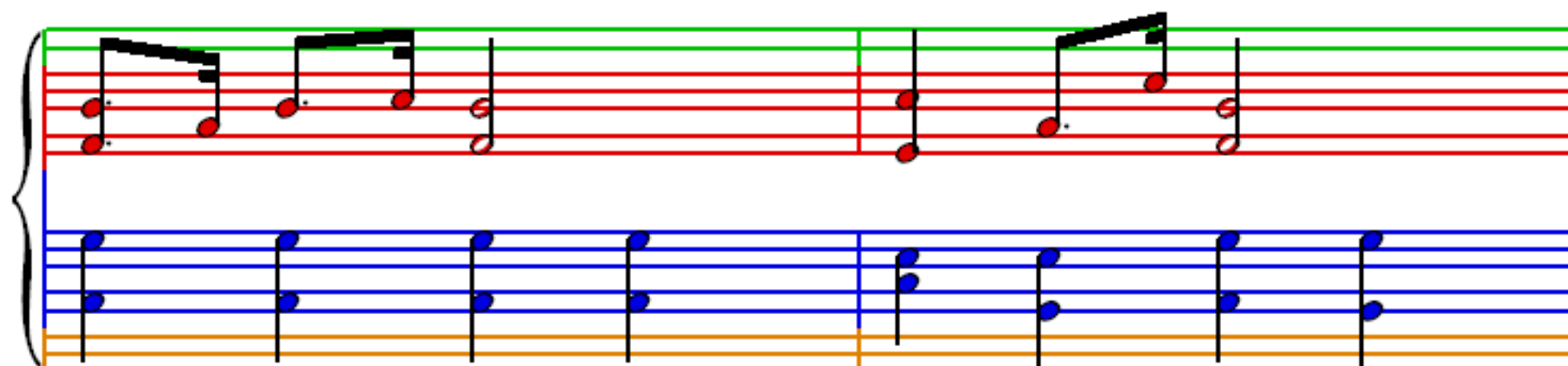
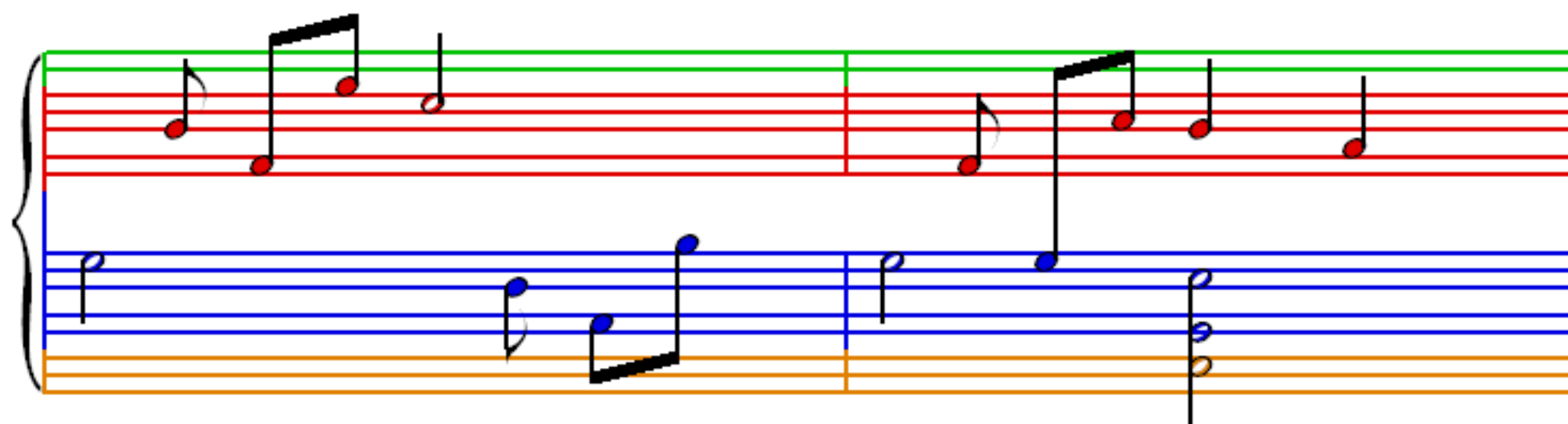
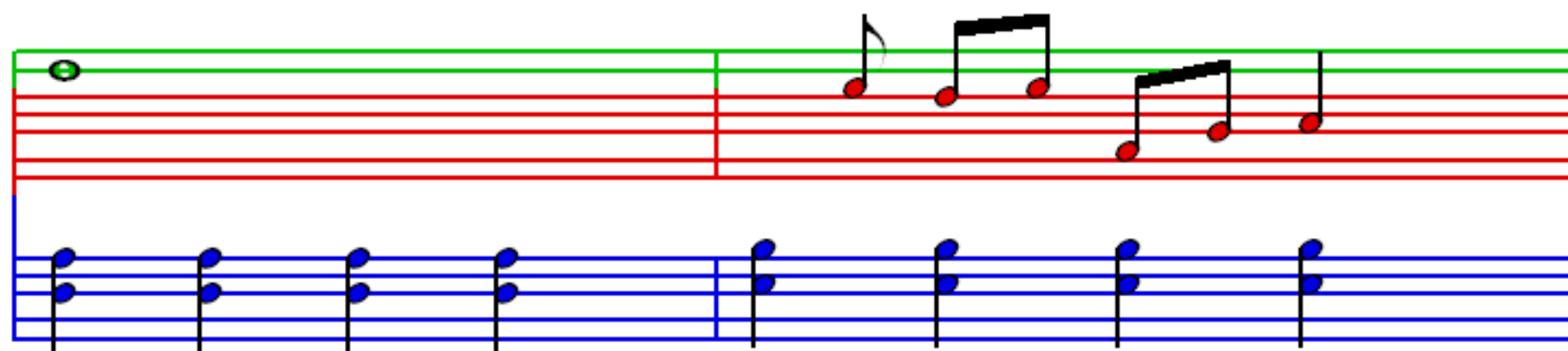
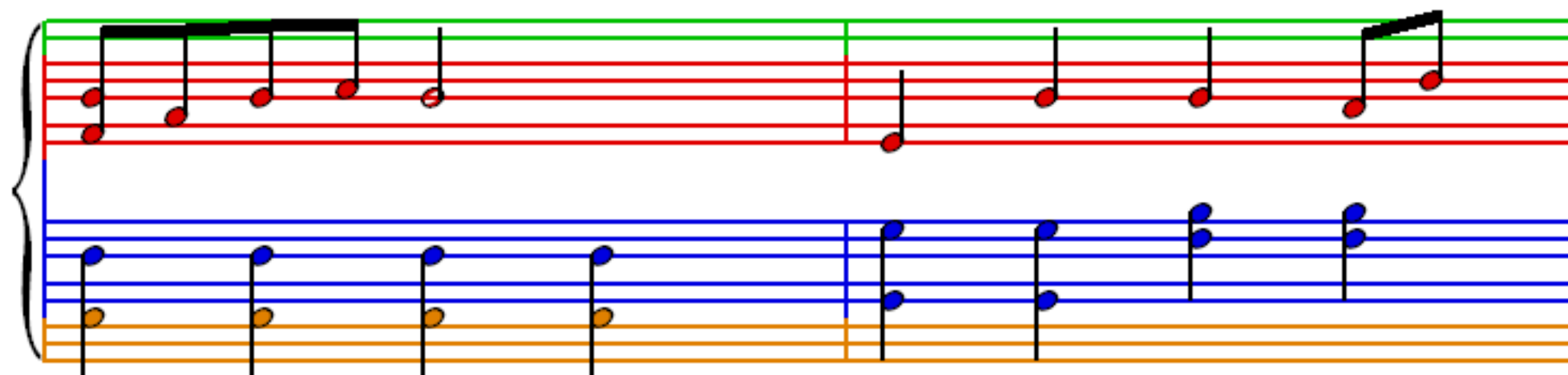
Bizet

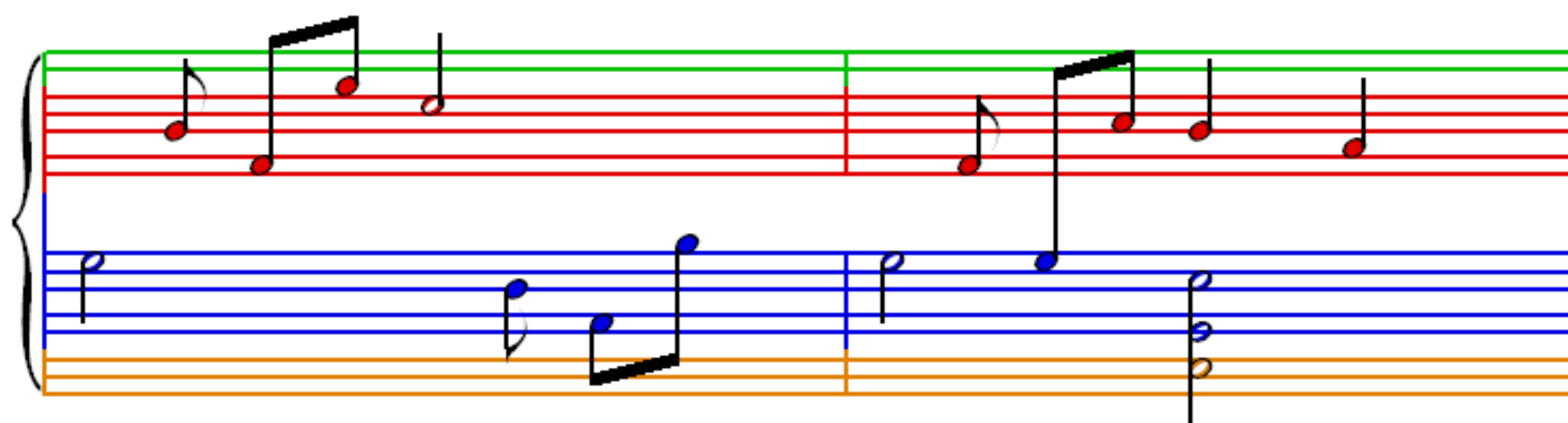
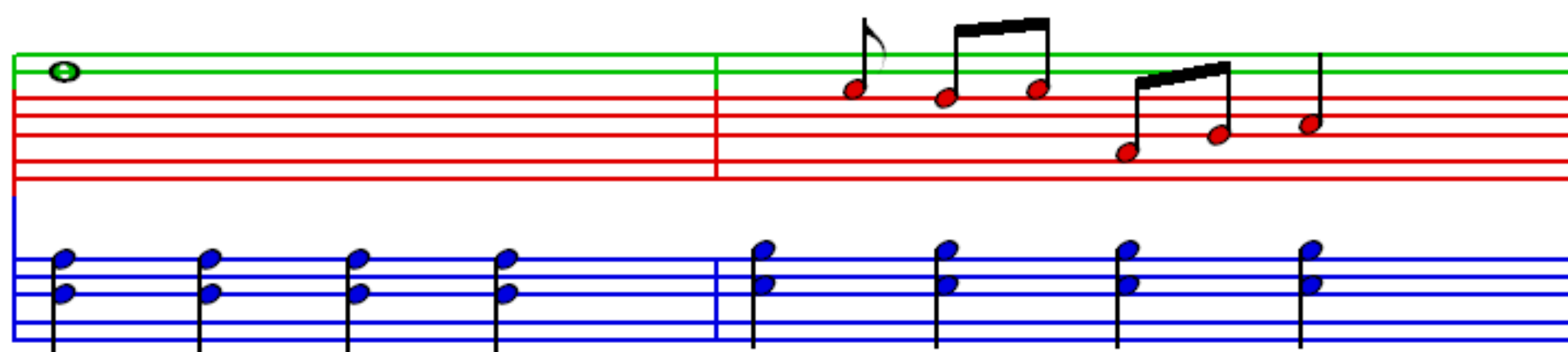
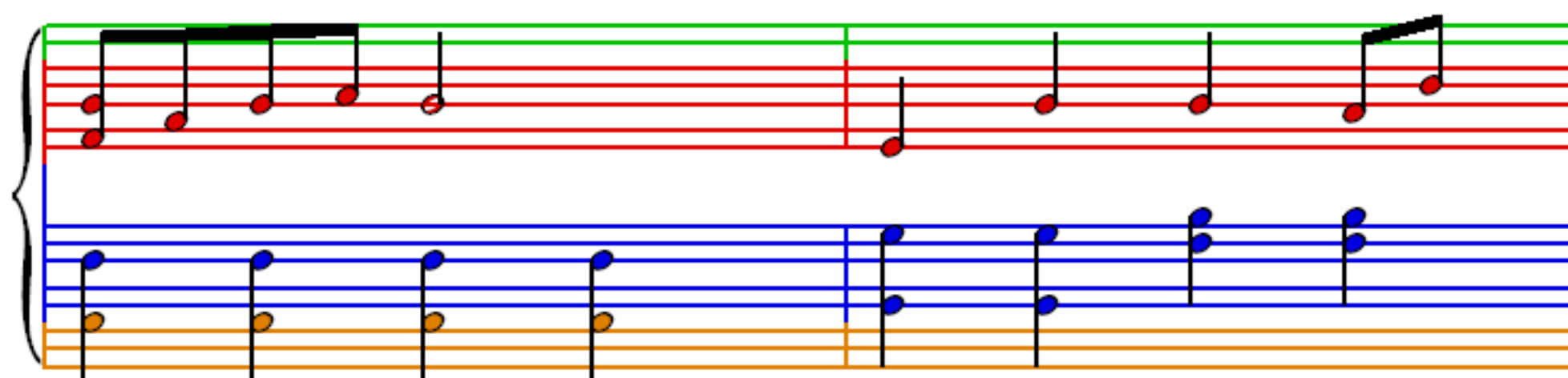
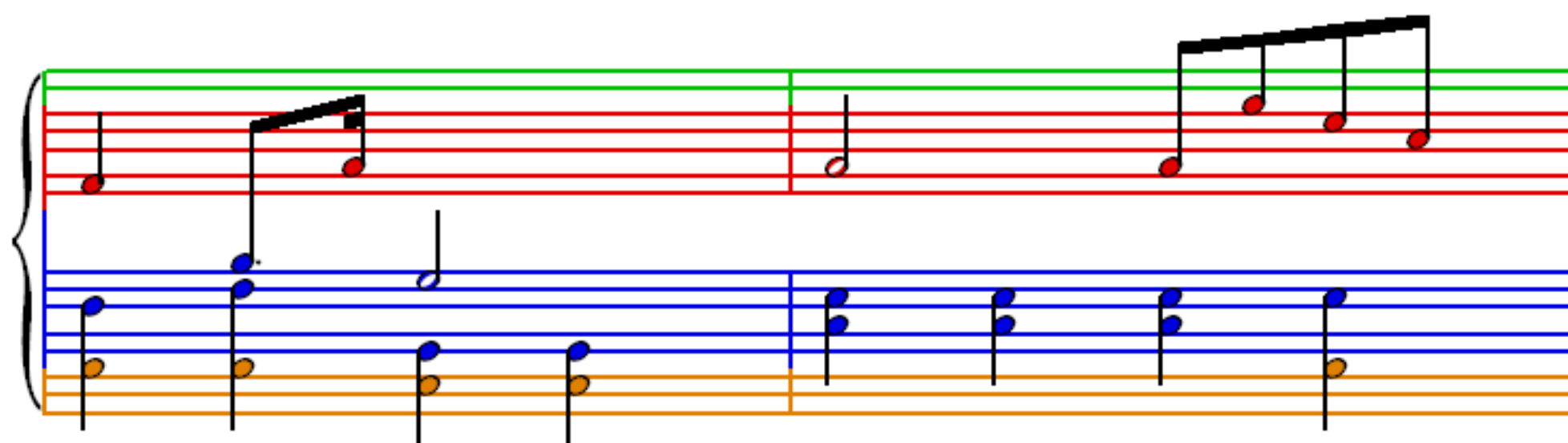


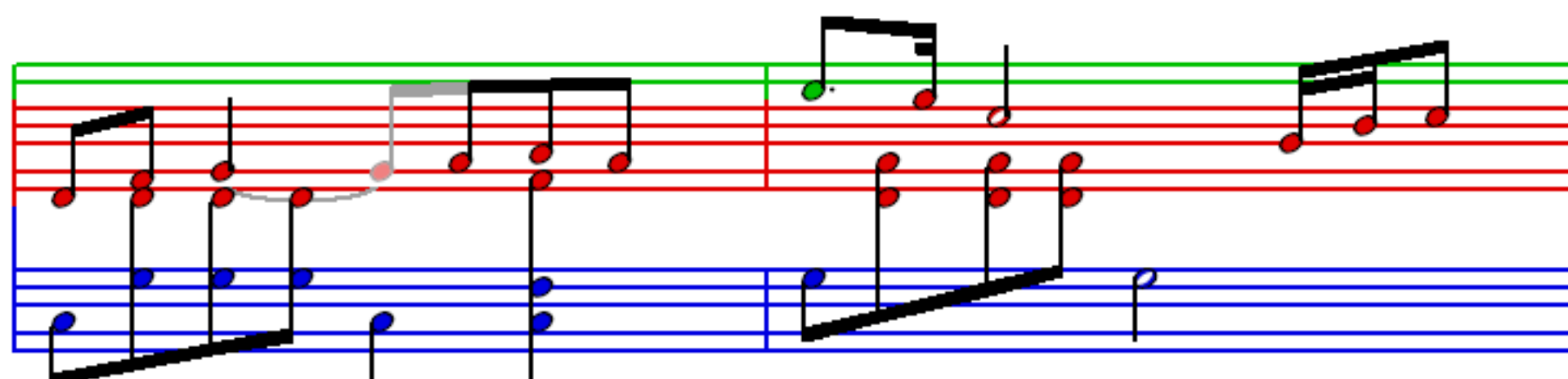
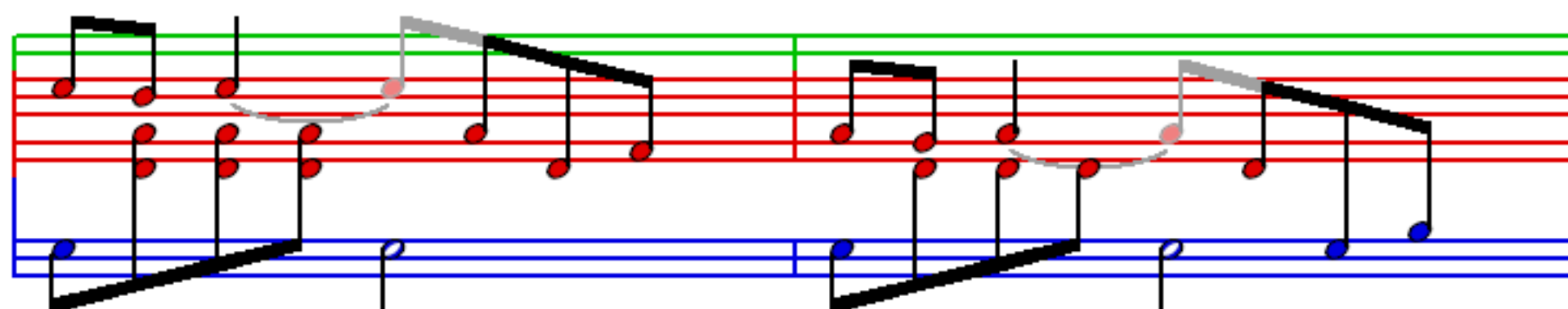
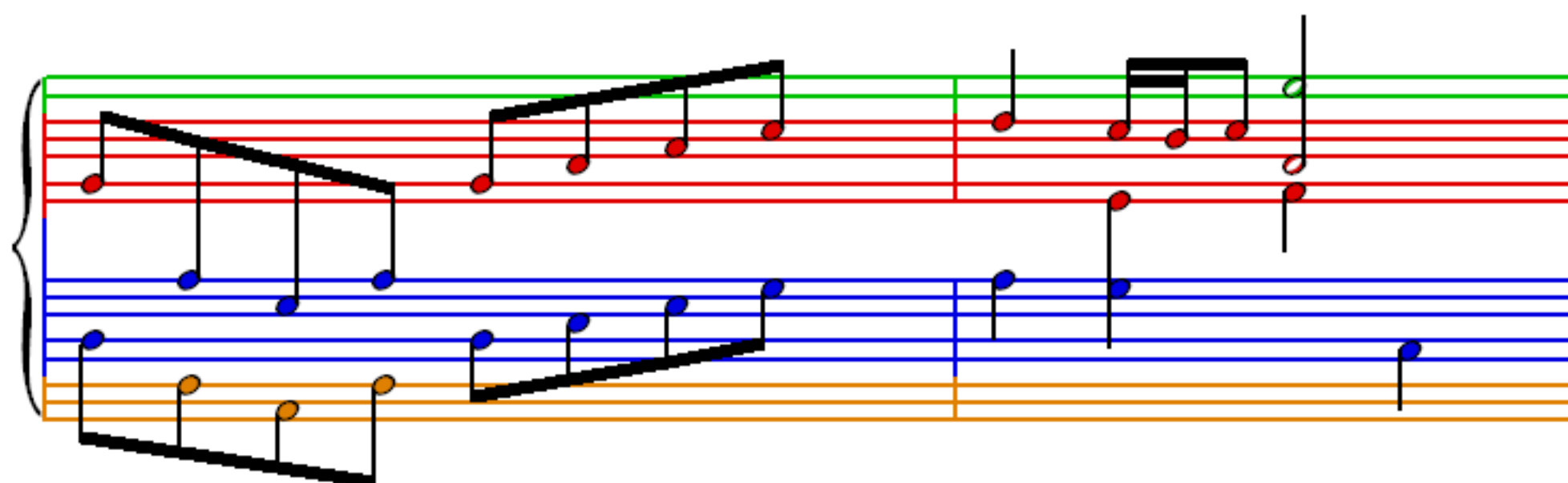
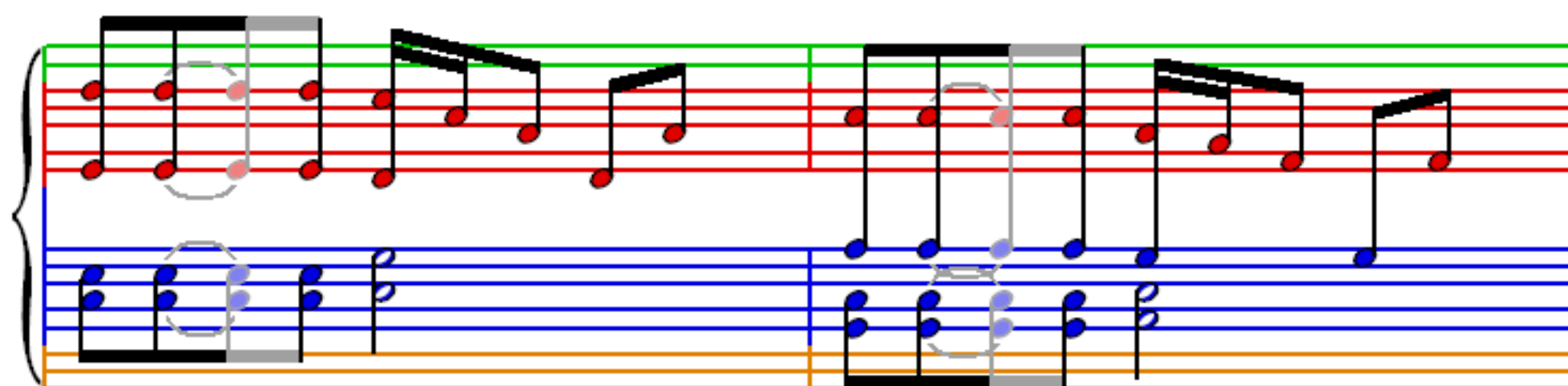
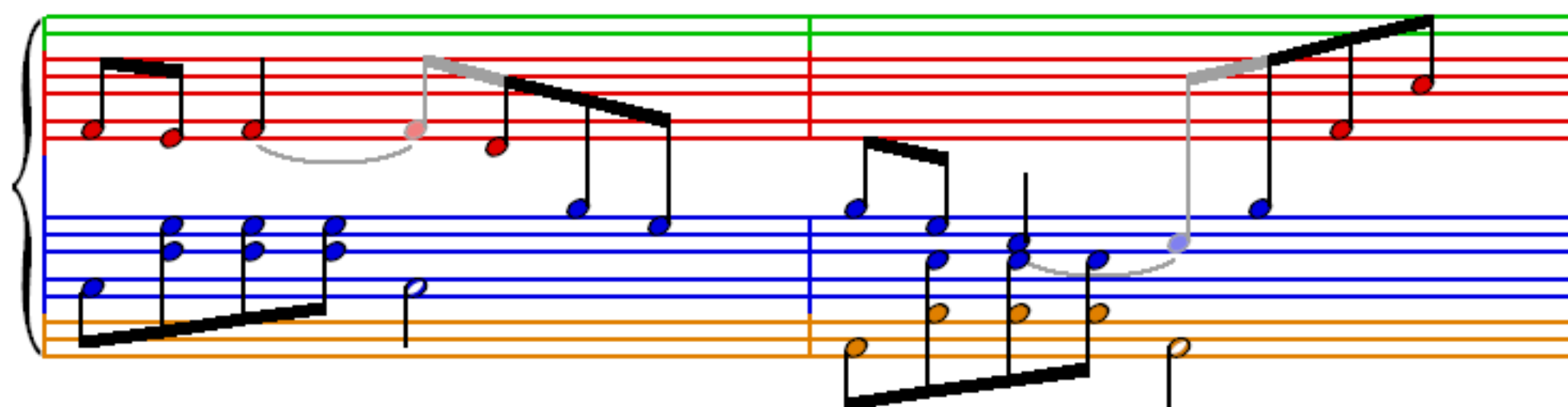


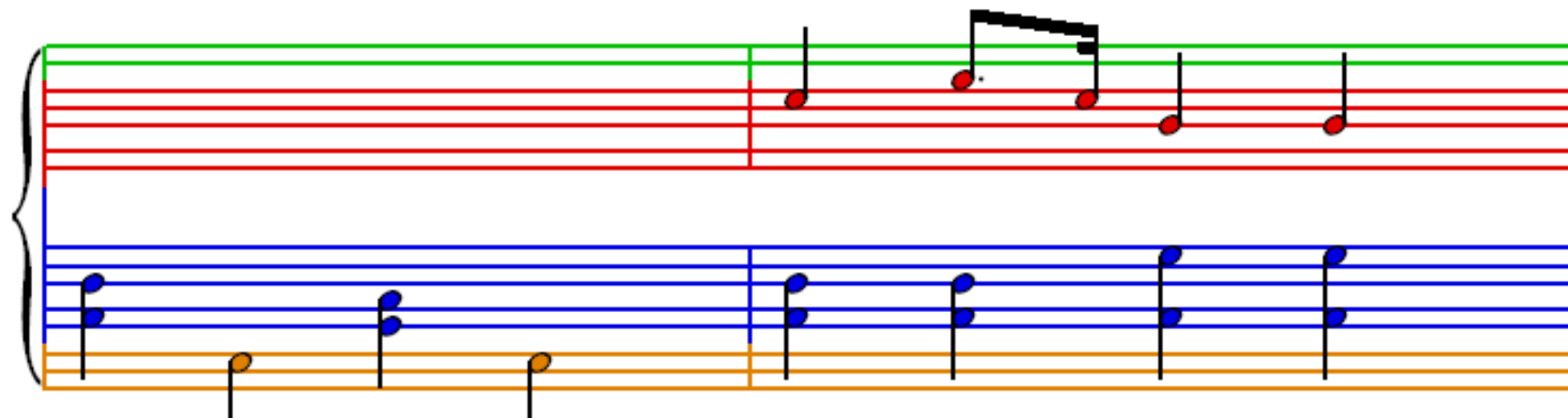
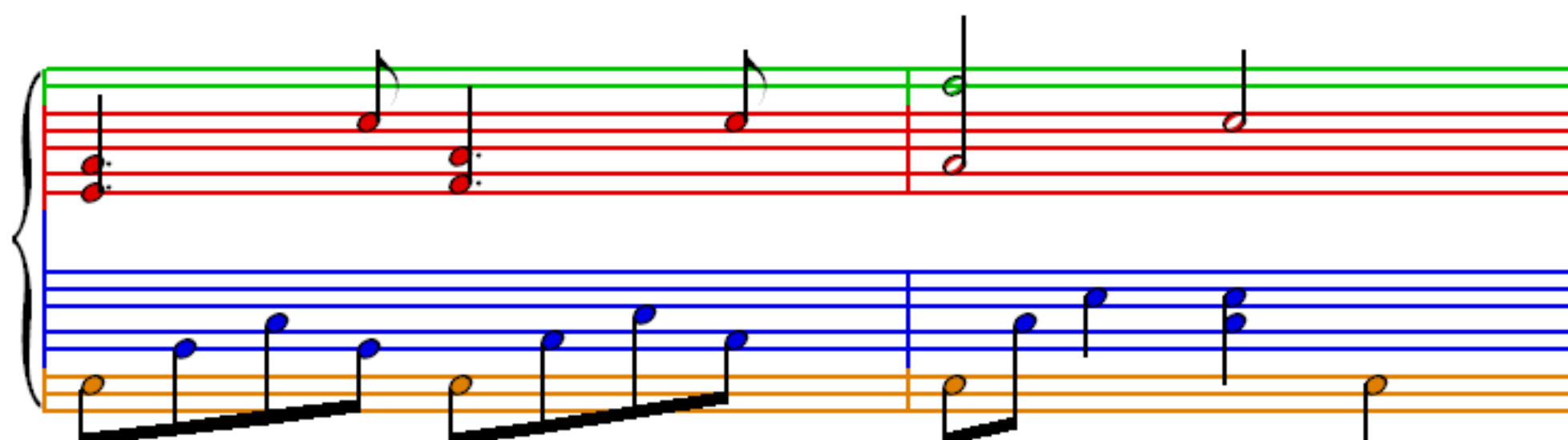
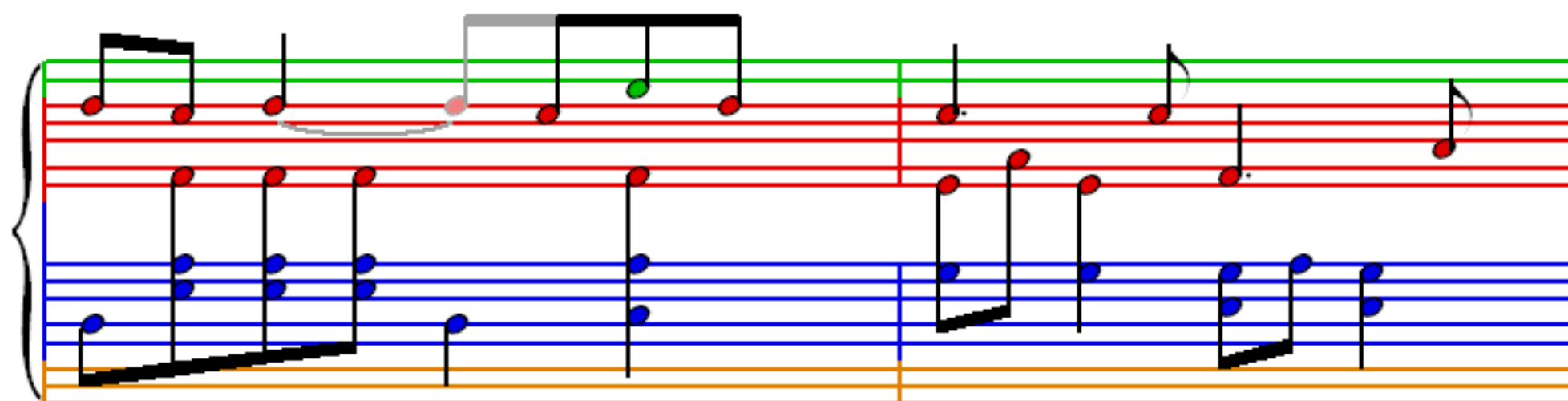
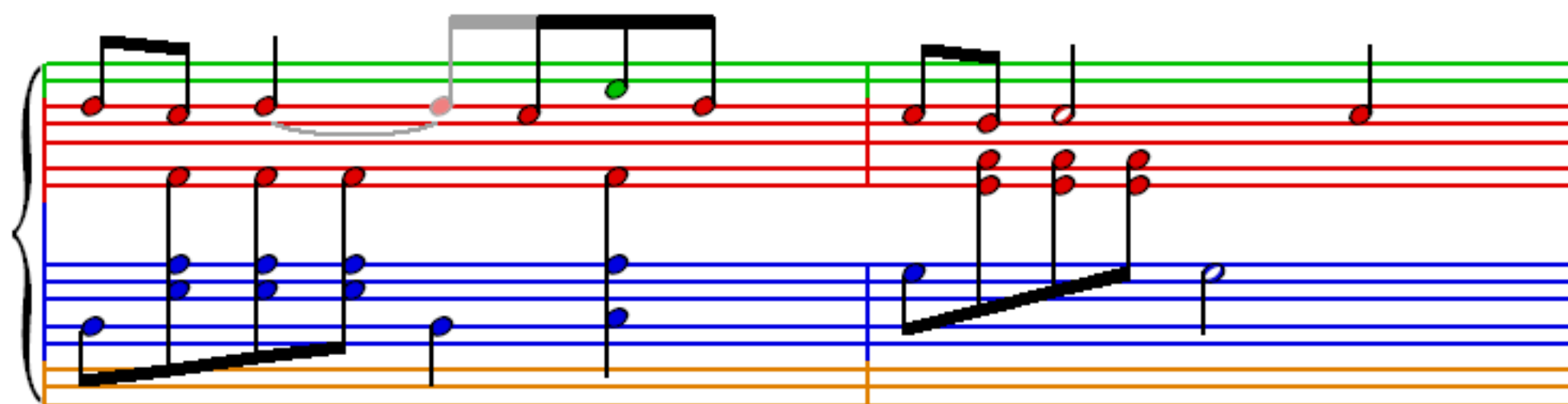


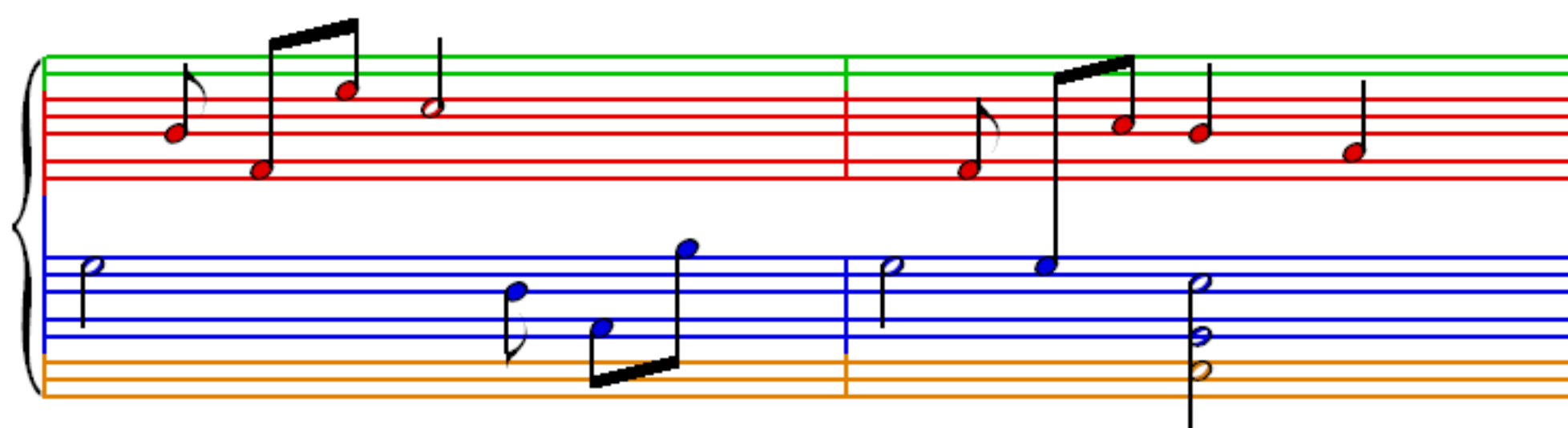
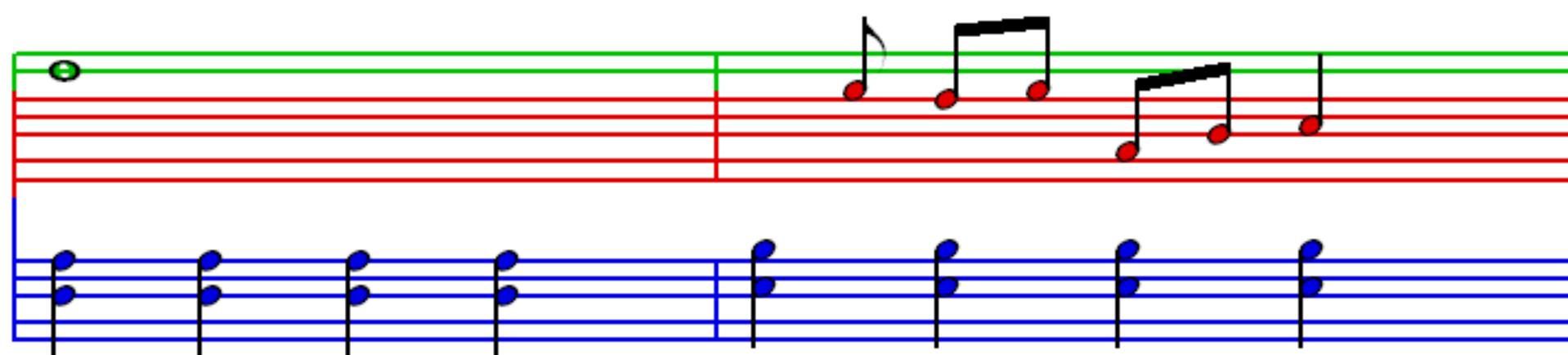
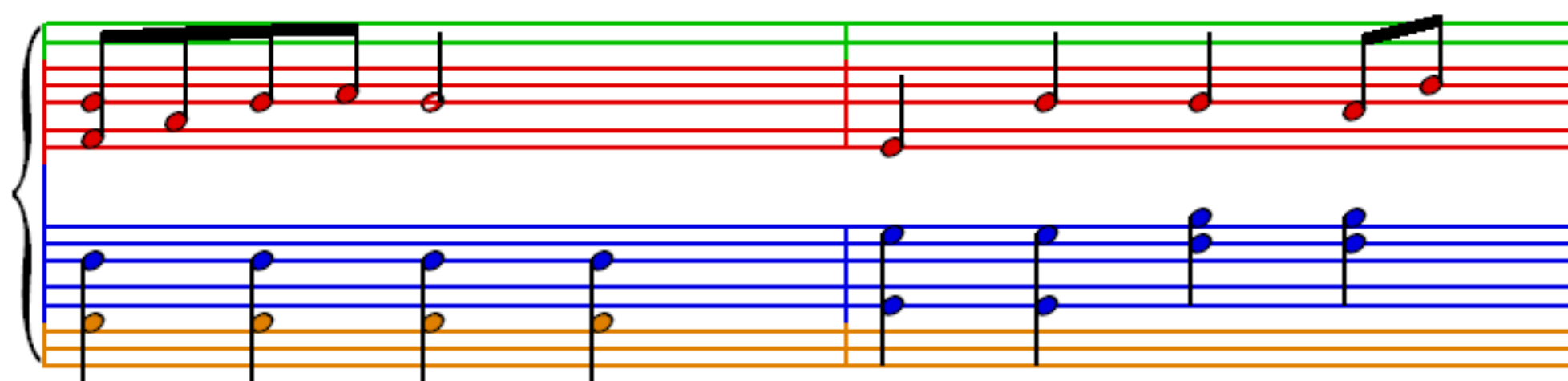
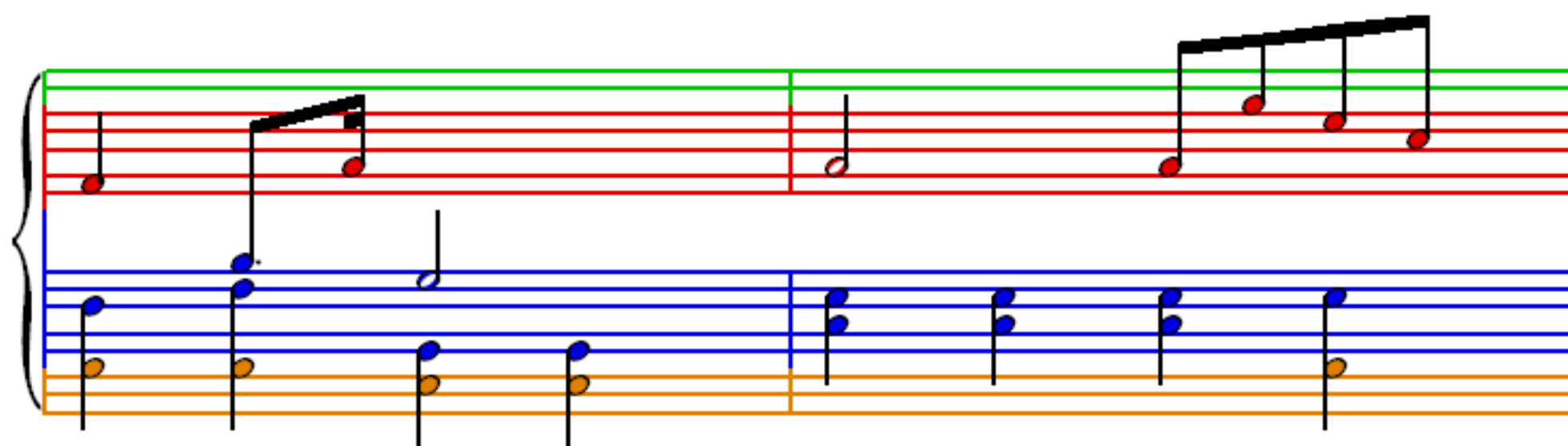
The image displays a musical score for 'Toreador's Song', page 4 of 12. The score is written for a grand staff (treble and bass clefs) and includes a separate bass line. The notation is color-coded: red for the melody, blue for the bass line, and orange for the bass line. The score is divided into two measures per system by a vertical bar line. The first measure of each system contains a melody line with a slur over the first four notes, and a bass line with a slur over the first four notes. The second measure of each system contains a melody line with a slur over the first four notes, and a bass line with a slur over the first four notes.

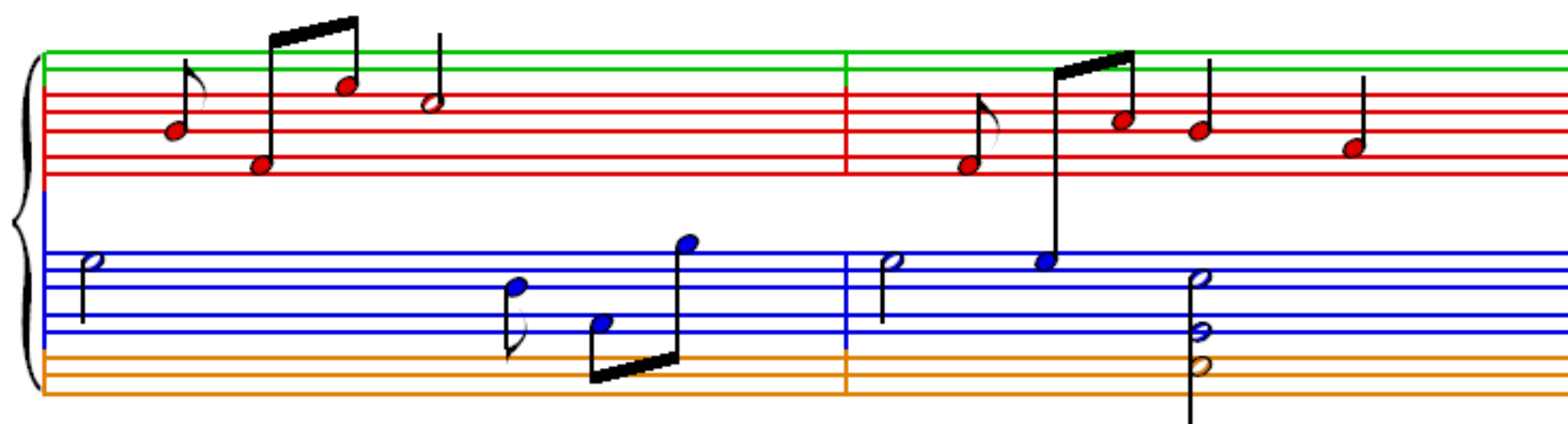
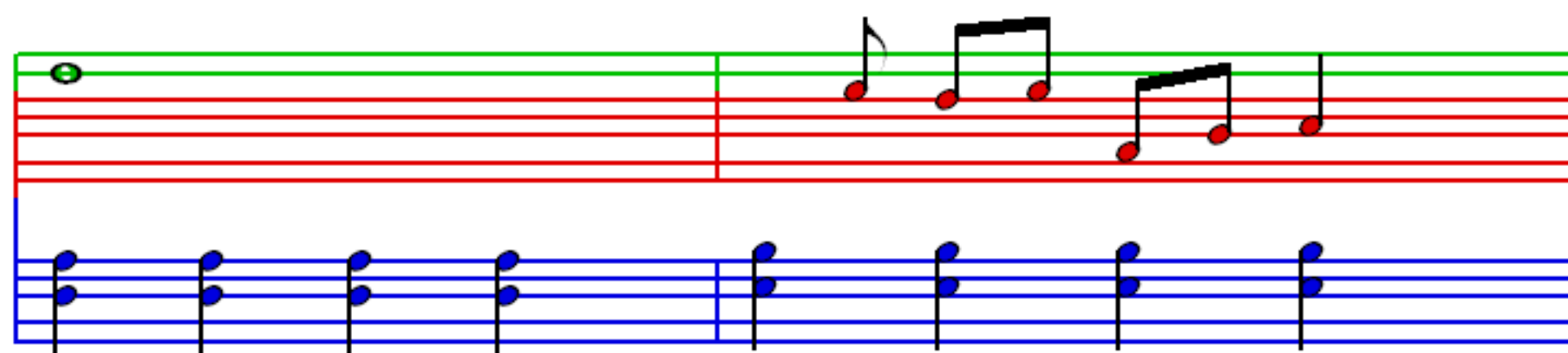
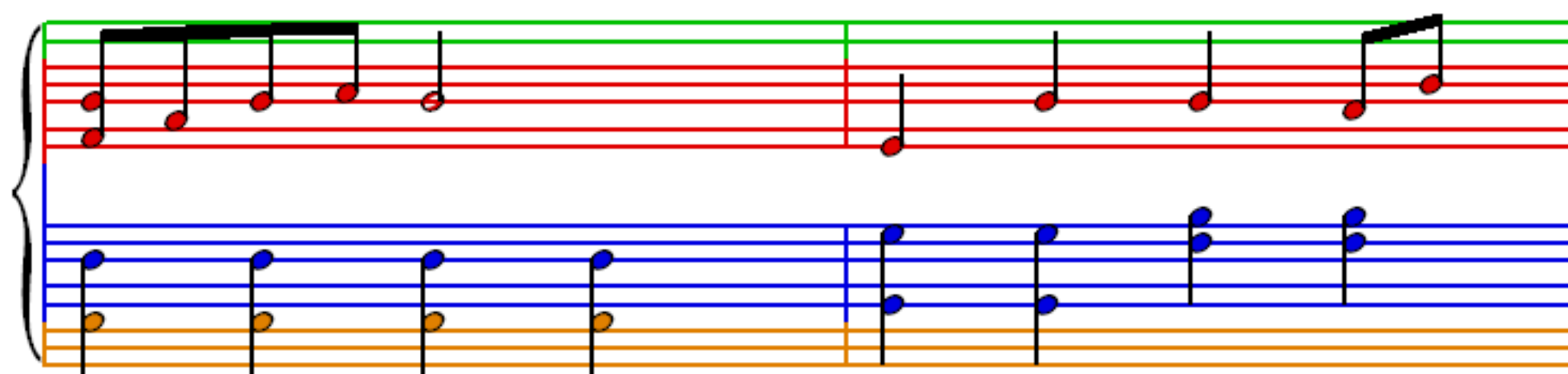
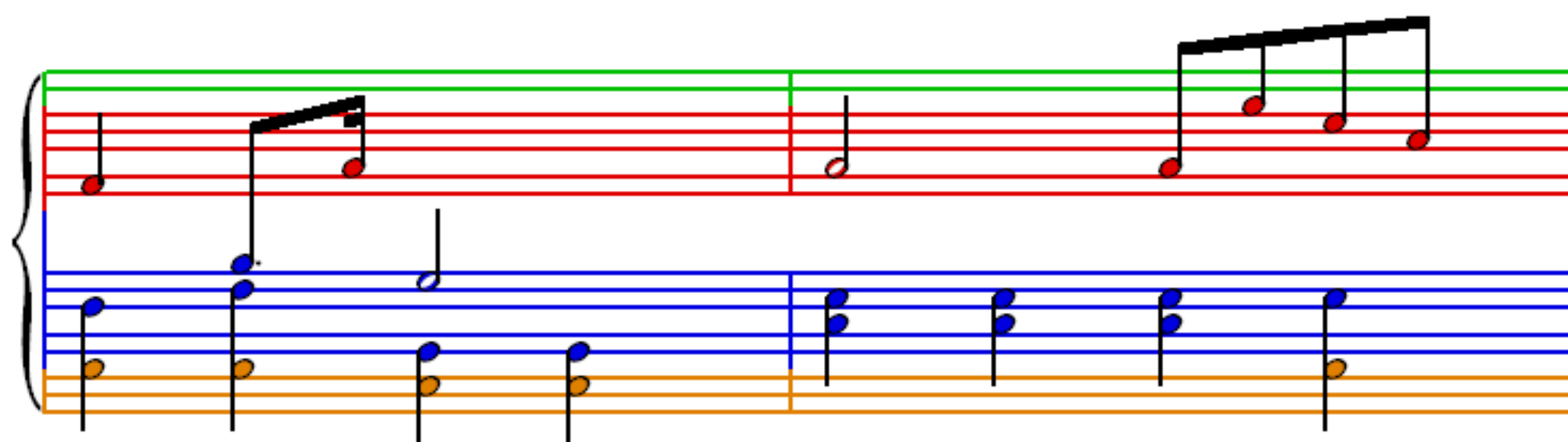
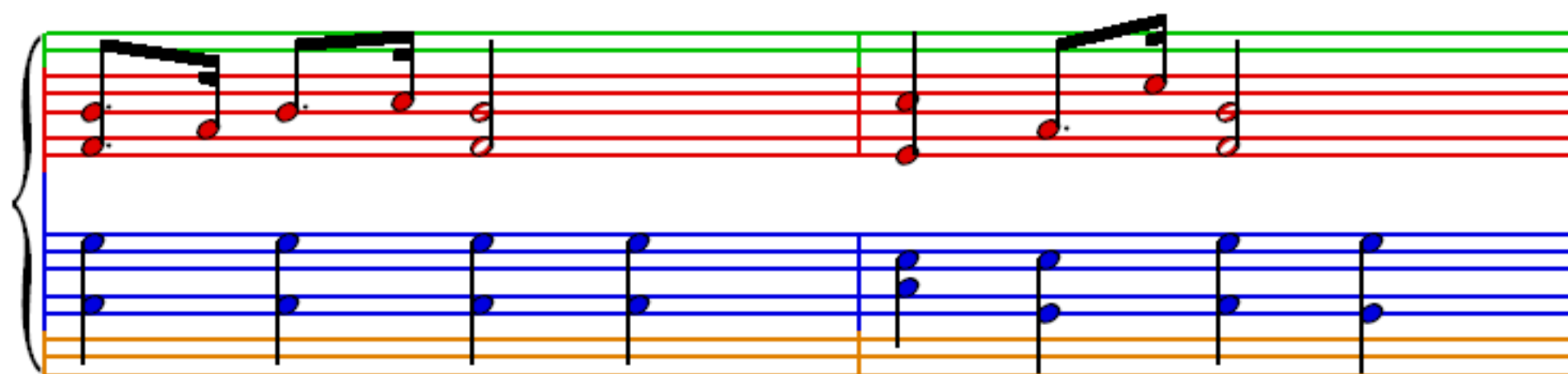












The image displays three systems of musical notation for a piano accompaniment. Each system consists of a treble staff (top) and a bass staff (bottom), connected by a brace on the left. The staves are color-coded: the treble staff has a green top line and red lower lines, while the bass staff has a blue top line and orange lower lines. Vertical bar lines divide the music into measures. The first system shows a treble staff with eighth notes and a bass staff with quarter notes. The second system features a treble staff with a half note and a bass staff with quarter notes. The third system includes a treble staff with a half note and a bass staff with quarter notes. The notation includes various musical symbols such as notes, stems, and beams, with some notes highlighted in red or blue to match the staff colors.