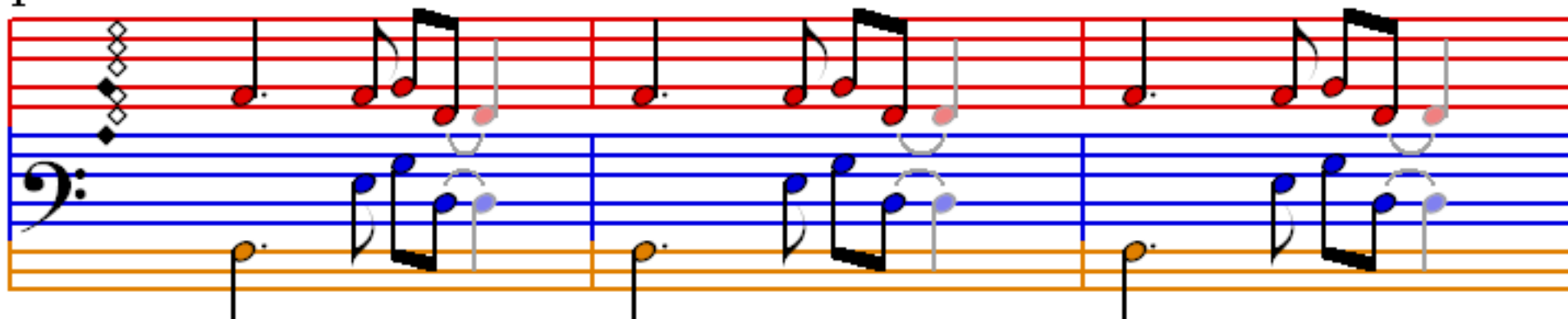


$\text{♩} = 160$

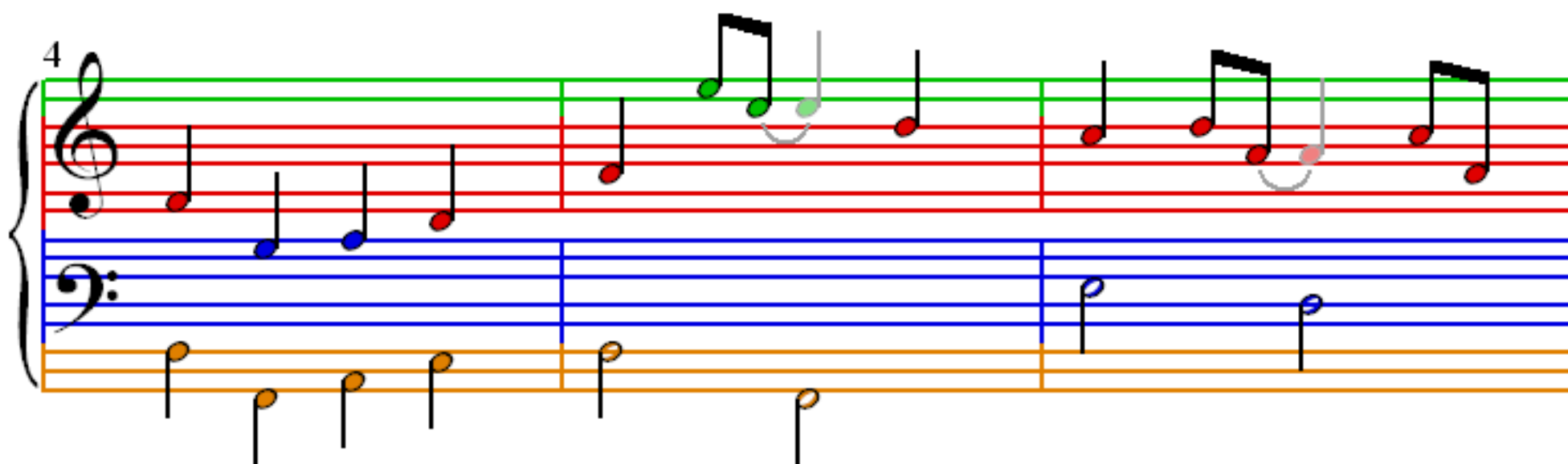
Top Of The World

The Carpenters

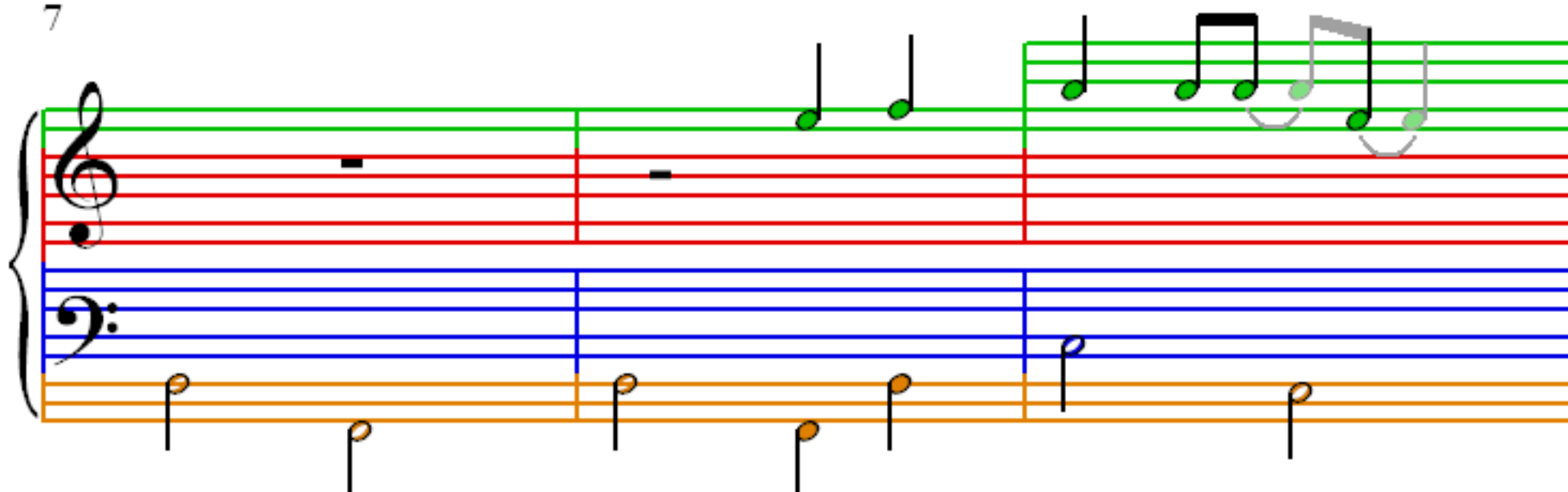
1



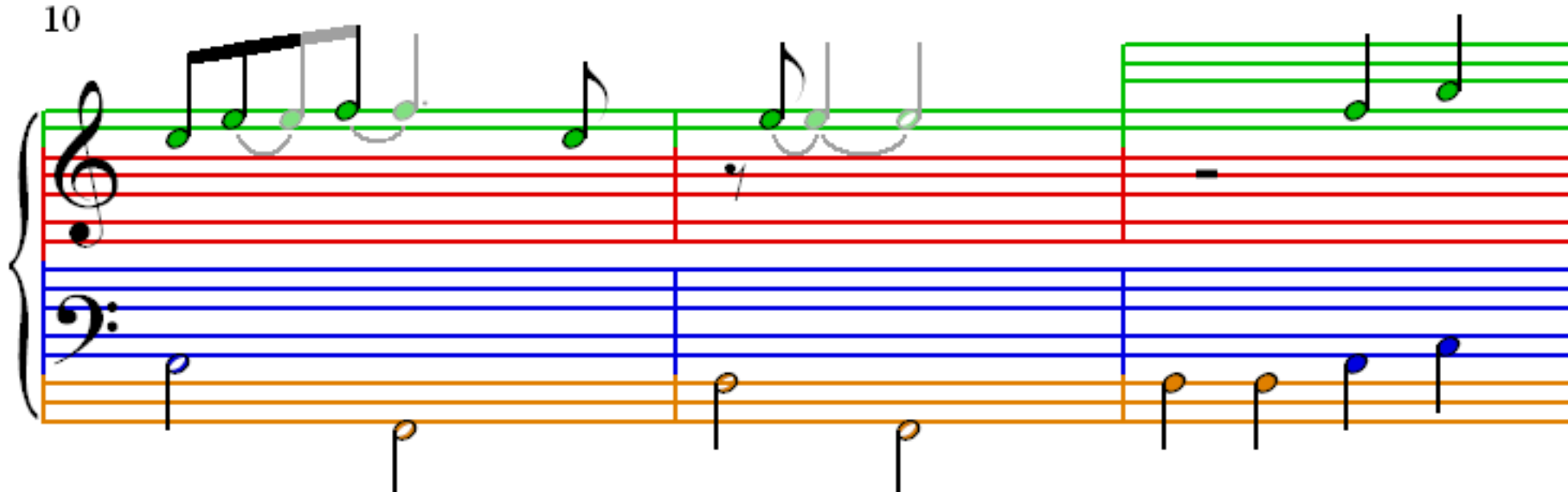
4



7



10



13

16

19

22

25

Measures 25-27. Treble clef: Measure 25 has eighth notes (G4, A4, B4, C5, B4, A4, G4) with a slur. Measure 26 has eighth notes (F4, E4, D4, C4, B3, A3, G3) with a slur. Measure 27 has a quarter note (F4) and a whole rest. Bass clef: Measure 25 has a half note (G2). Measure 26 has a half note (F2). Measure 27 has a half note (E2).

28

Measures 28-30. Treble clef: Measure 28 has a whole rest. Measure 29 has quarter notes (G4, A4, B4, C5). Measure 30 has quarter notes (B4, A4, G4, F4). Bass clef: Measure 28 has a half note (G2). Measure 29 has a half note (F2). Measure 30 has a half note (E2).

31

Measures 31-33. Treble clef: Measure 31 has quarter notes (G4, A4, B4, C5). Measure 32 has quarter notes (B4, A4, G4, F4). Measure 33 has quarter notes (E4, D4, C4, B3). Bass clef: Measure 31 has a half note (G2). Measure 32 has a half note (F2). Measure 33 has a half note (E2).

34

Measures 34-36. Treble clef: Measure 34 has eighth notes (G4, A4, B4, C5, B4, A4, G4) with a slur. Measure 35 has a quarter note (F4) and a whole rest. Measure 36 has a quarter note (E4) and a whole rest. Bass clef: Measure 34 has a half note (G2). Measure 35 has a half note (F2). Measure 36 has a half note (E2).

37

40

44

48