

The Thriller

1909

May Aufderheidie

♩ = 101

1

Measures 1-3 of the piece. Measure 1 contains a treble clef with a diamond-shaped chord and a bass clef with a whole note. Measures 2 and 3 feature a bass line with eighth notes and chords in the treble. A black wedge indicates a crescendo over measures 2 and 3.

4

Measures 4-6. Measure 4 continues the bass line and treble chords. Measures 5 and 6 show a continuation of the musical theme with a crescendo indicated by a black wedge over measures 5 and 6.

7

Measures 7-9. Measure 7 continues the pattern. Measures 8 and 9 feature a crescendo indicated by a black wedge over measures 8 and 9.

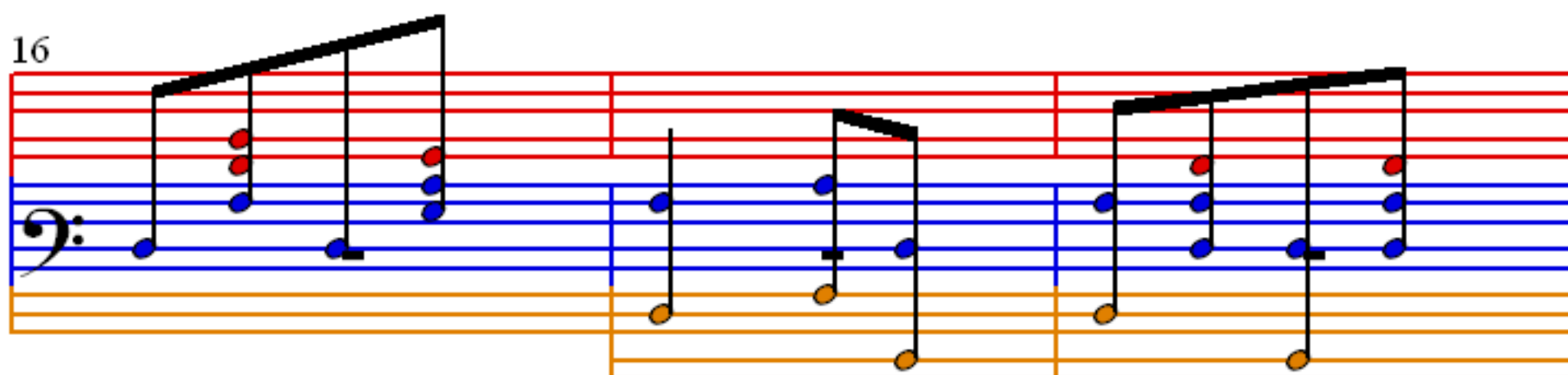
10

Measures 10-12. Measure 10 continues the pattern. Measures 11 and 12 feature a crescendo indicated by a black wedge over measures 11 and 12.

13

Measures 13-15. Measure 13 continues the pattern. Measures 14 and 15 feature a crescendo indicated by a black wedge over measures 14 and 15.

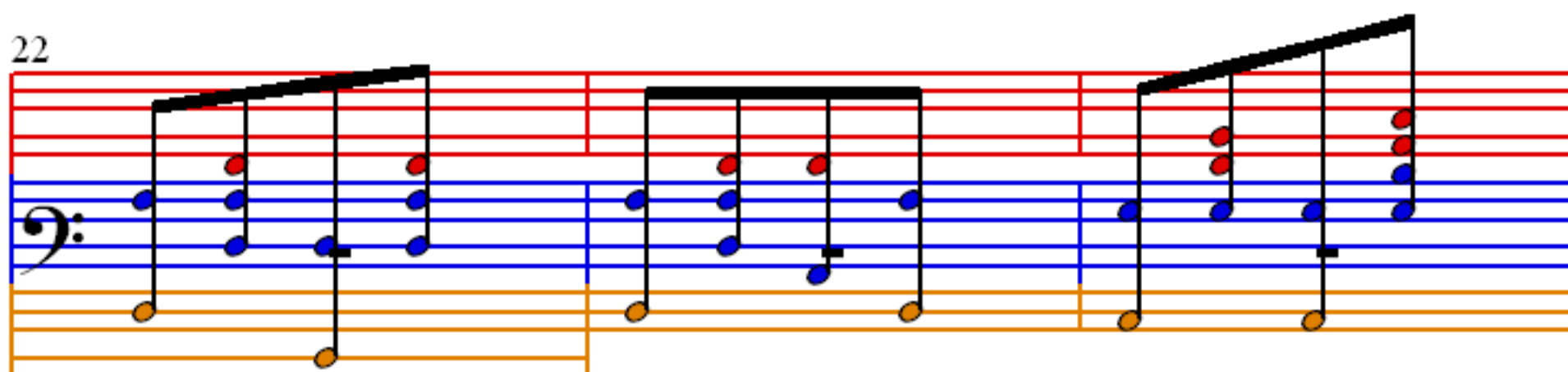
16



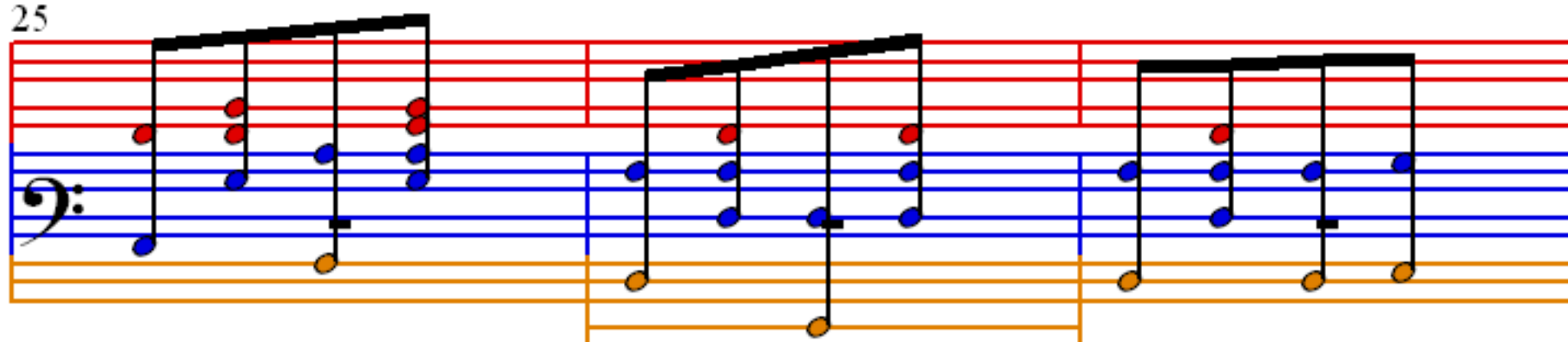
19



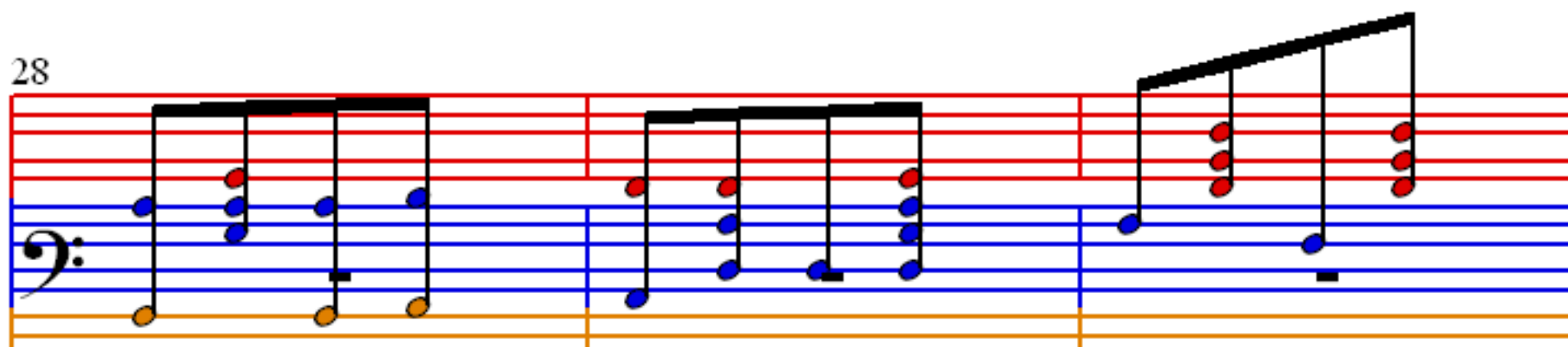
22



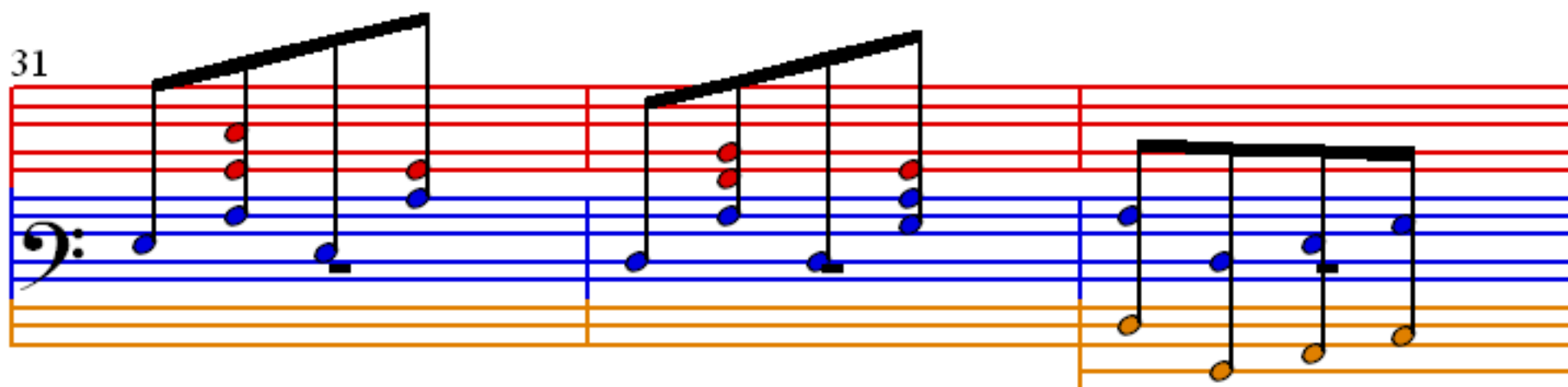
25



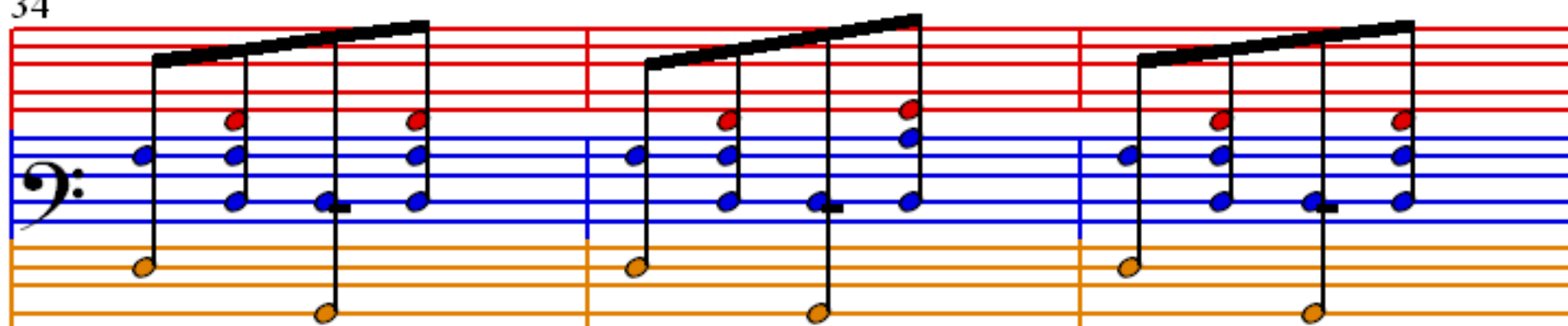
28



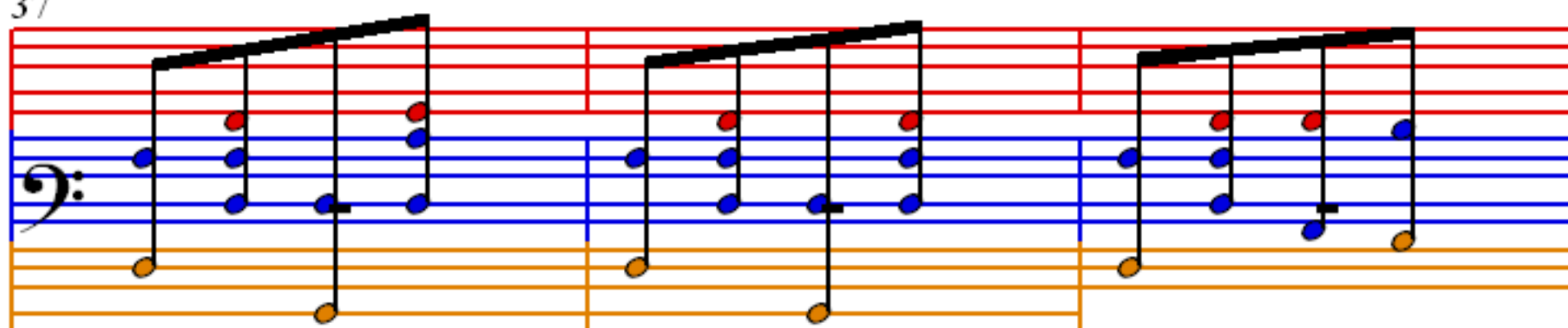
31



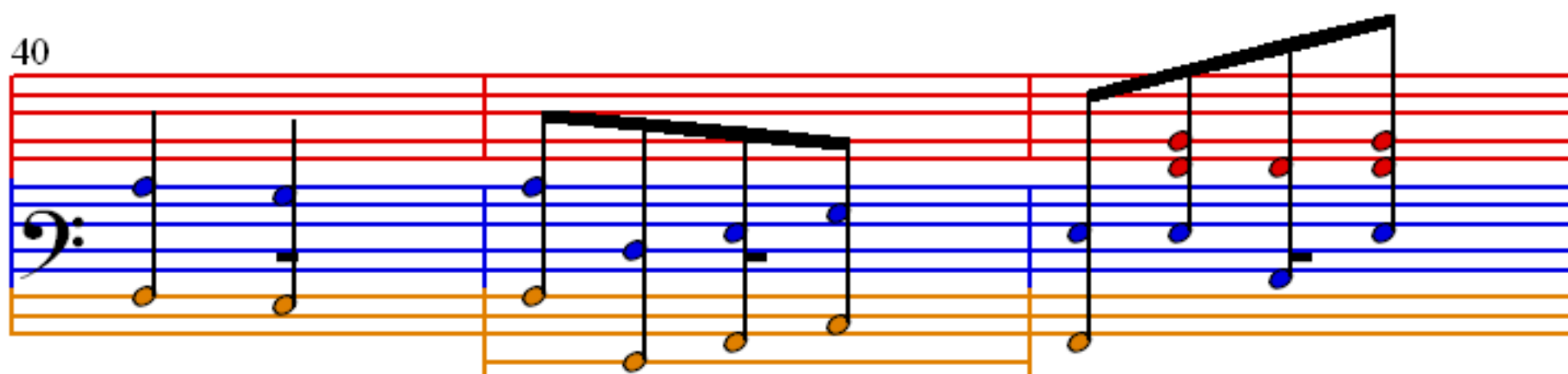
34



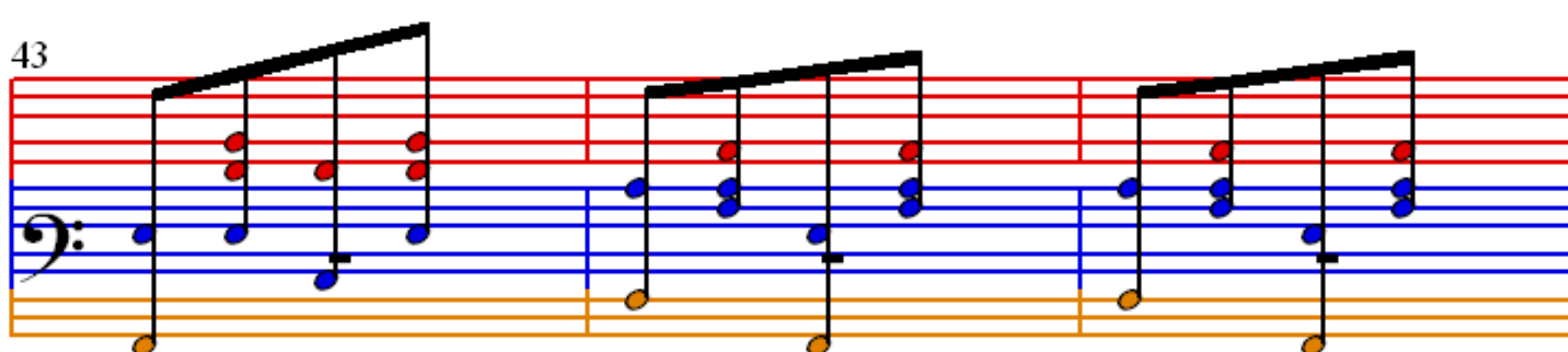
37



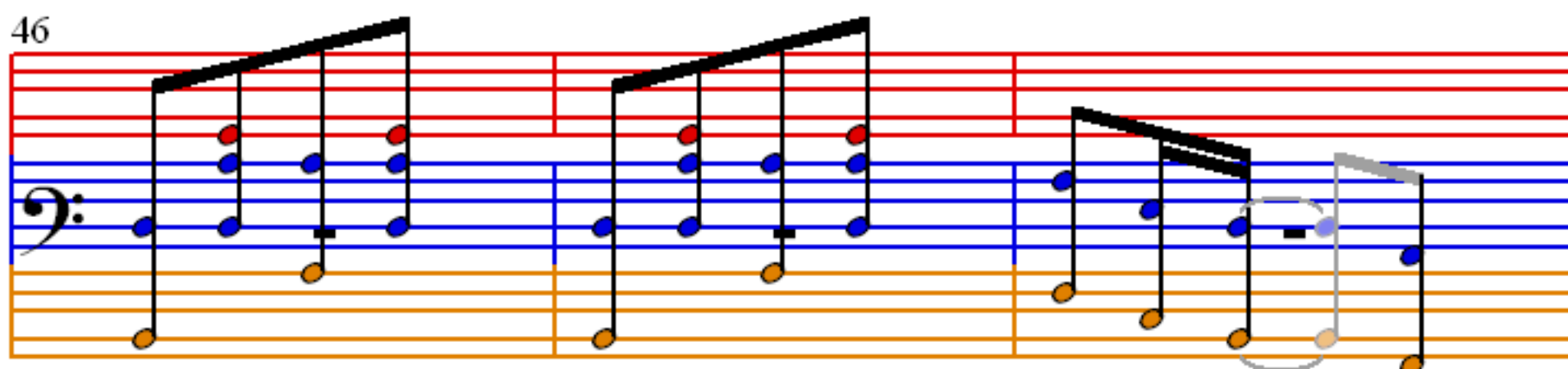
40



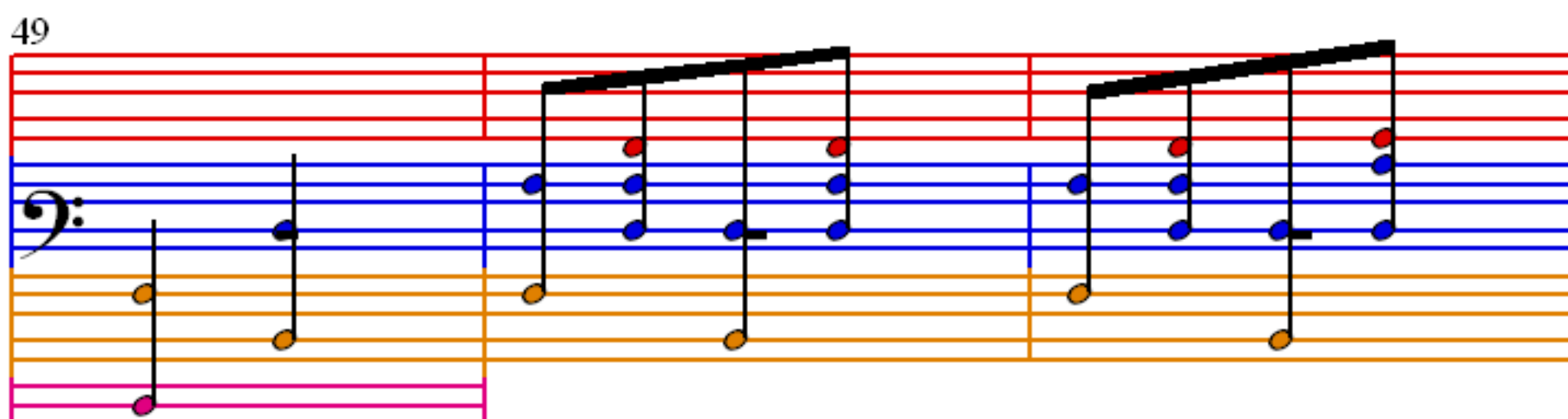
43



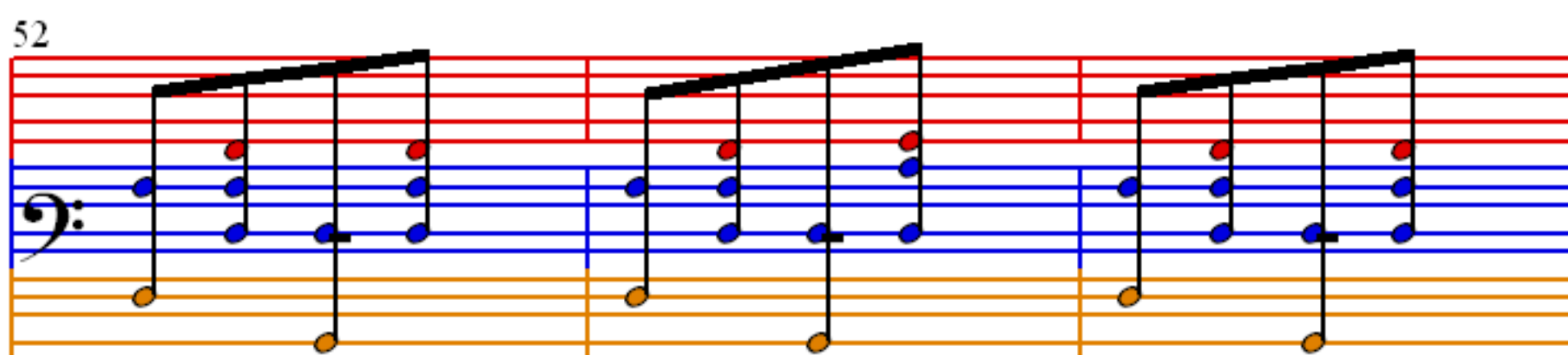
46



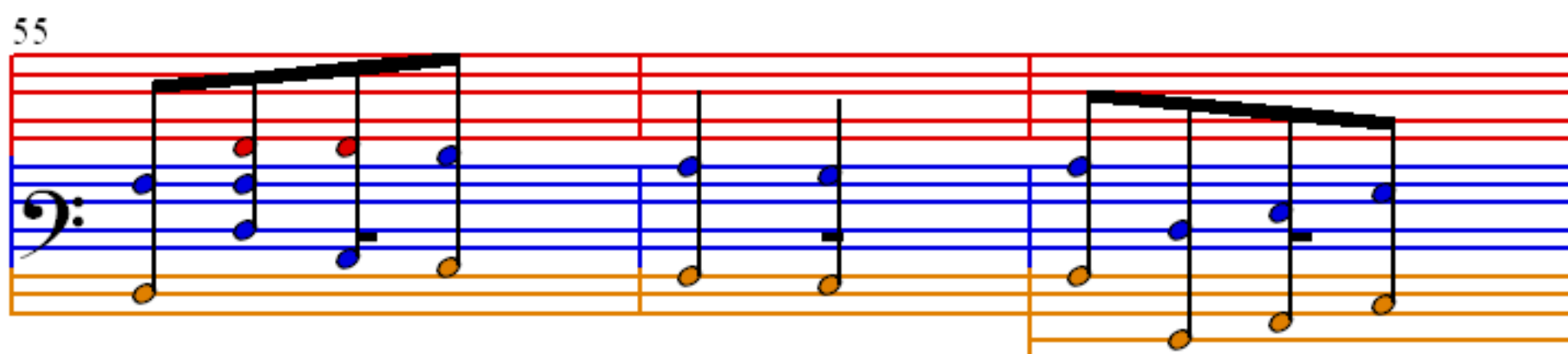
49



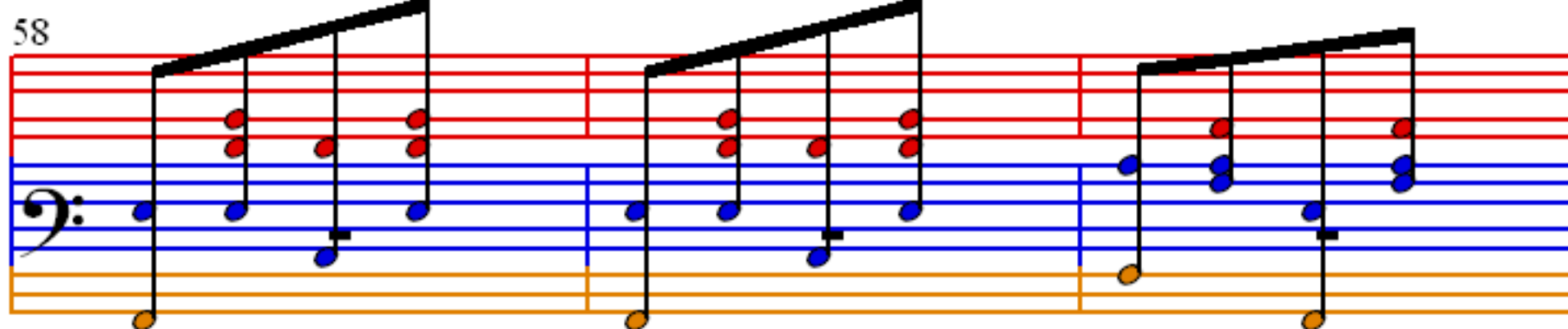
52

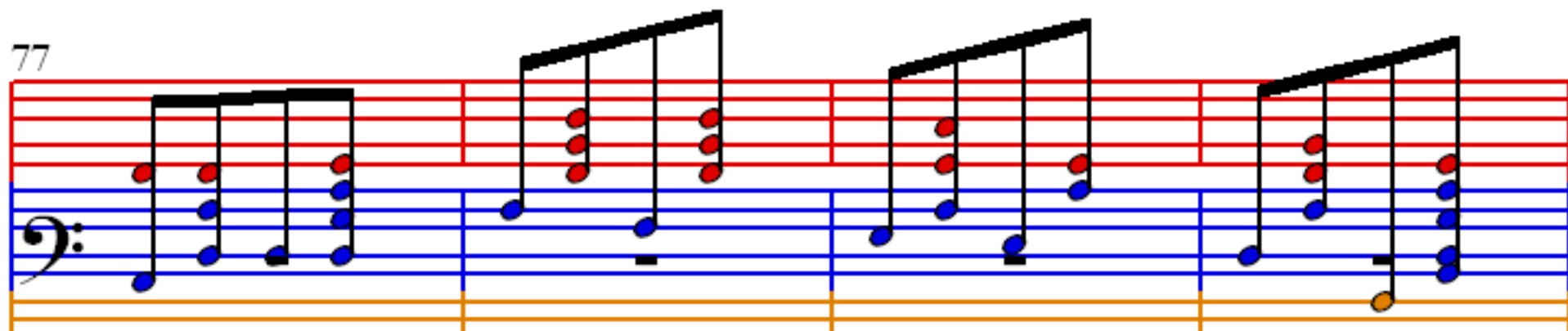
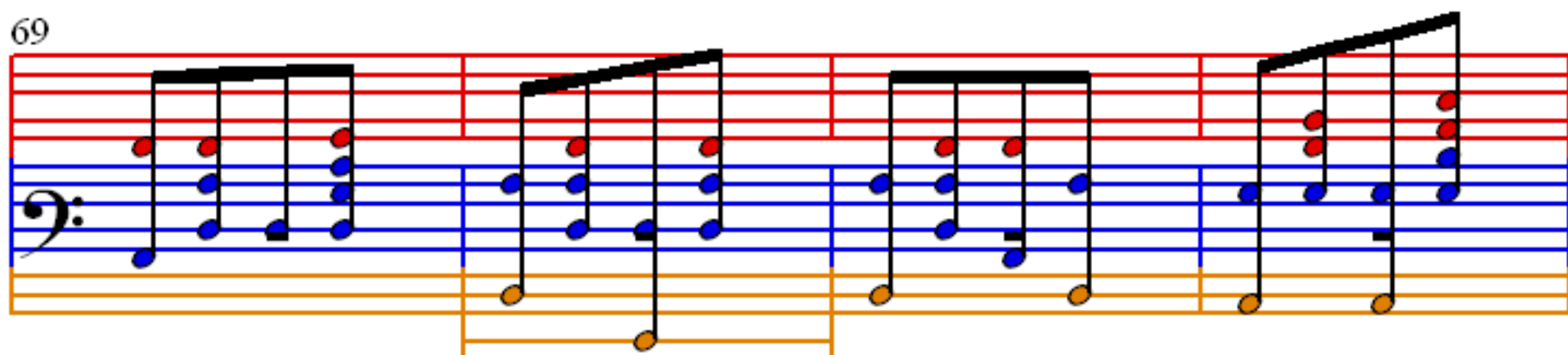
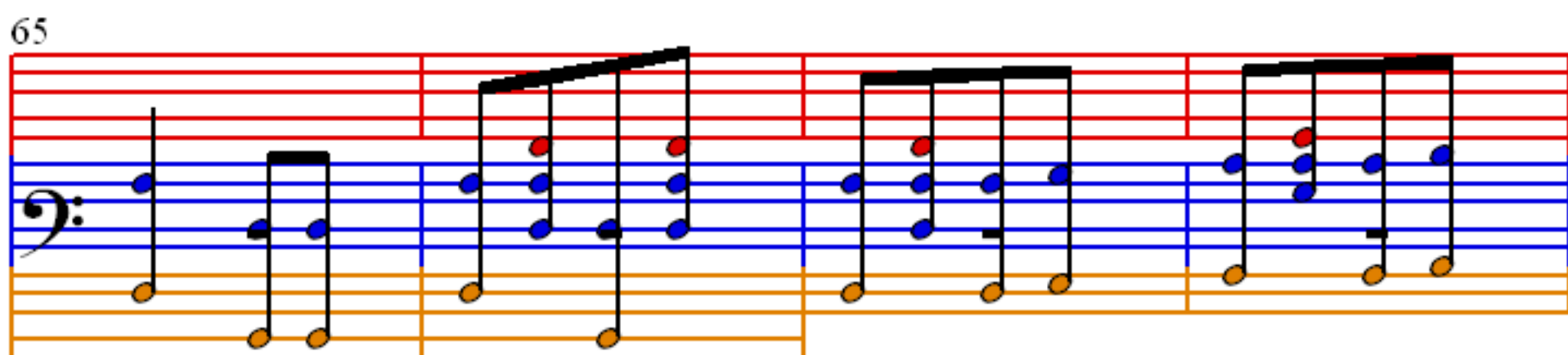
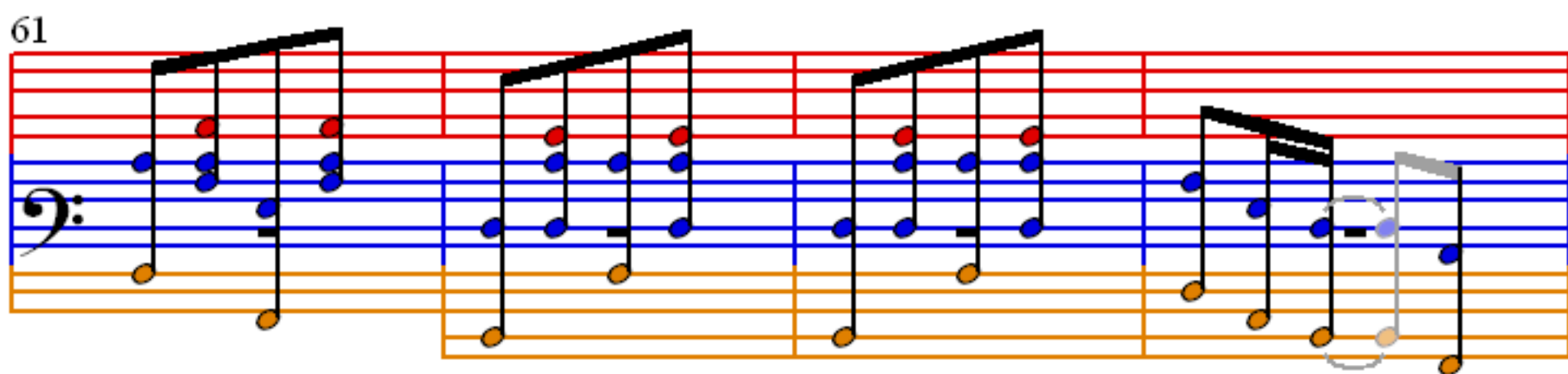


55

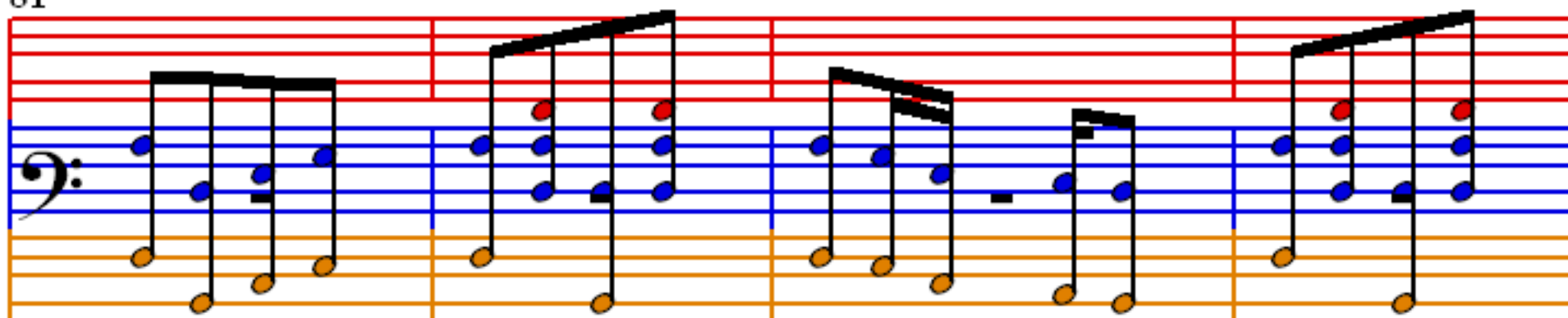


58

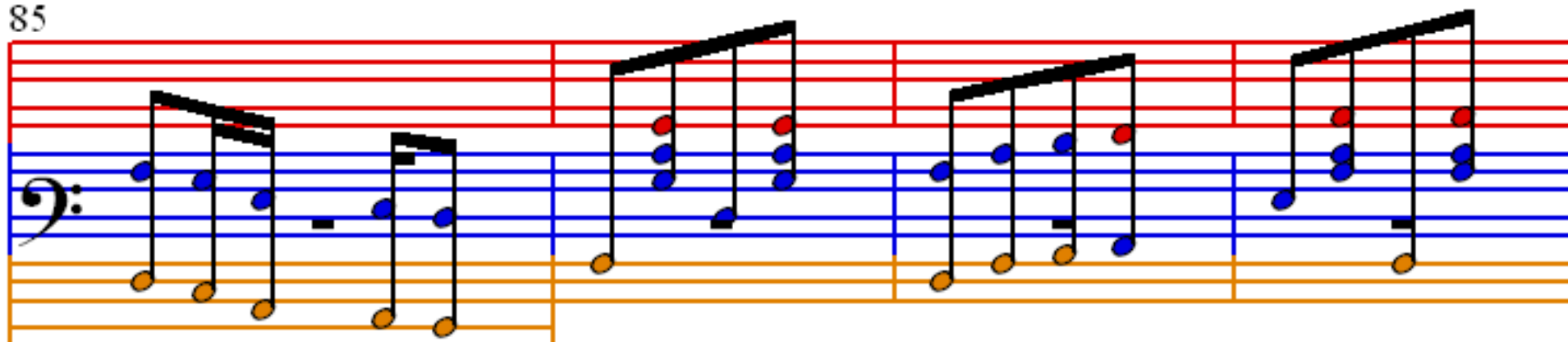




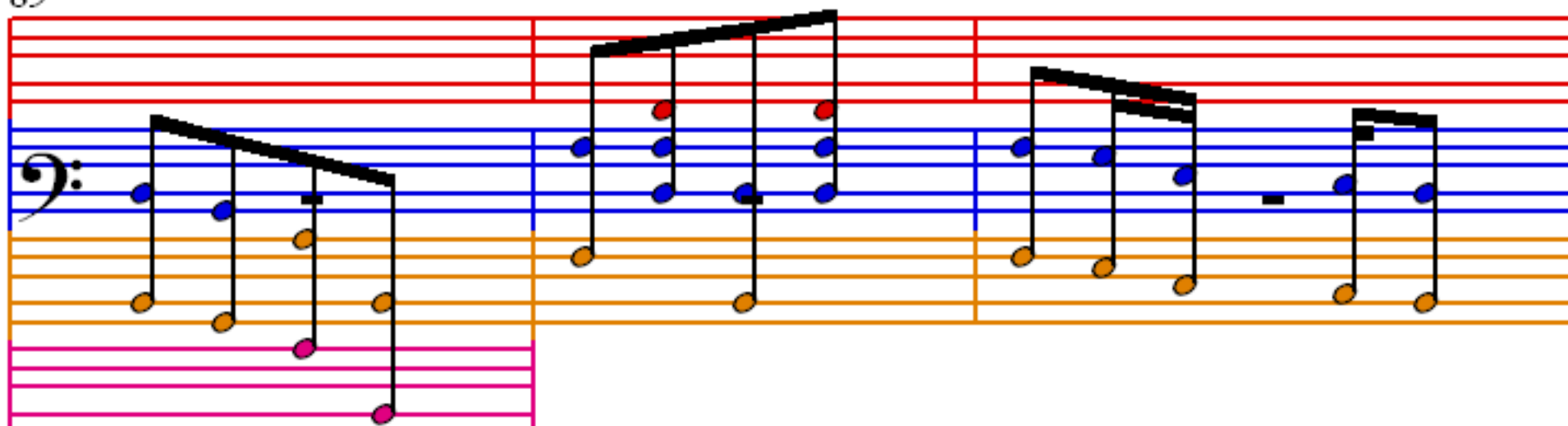
81



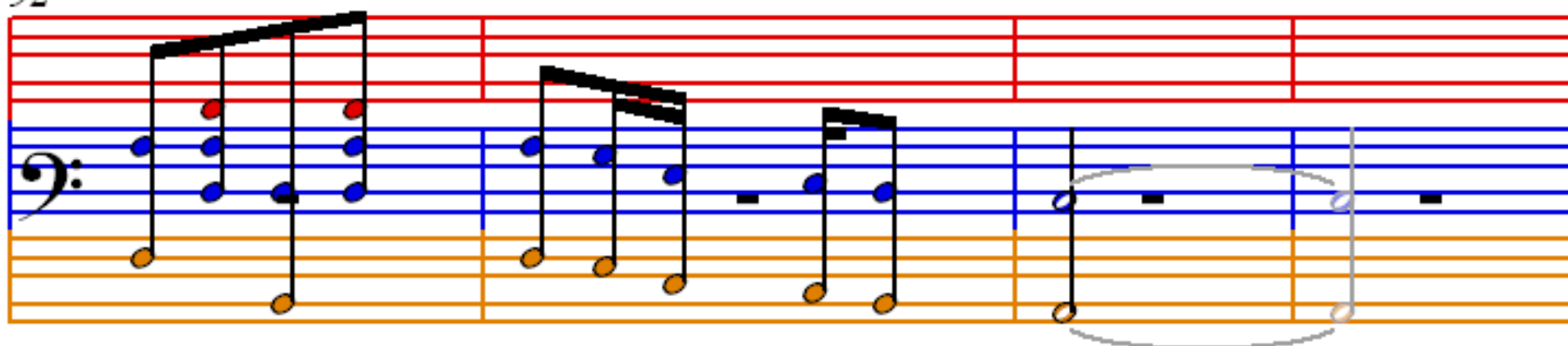
85



89



92



96

