

Everything I Do, I Do It For You

Brian Adams

♩ = 120

4

7

10

13

16

19

22

25

28

31

34

35

37

Musical score for 'The Rose Tree' (Meisterlied). The score is written for three parts: Treble (red), Bass (blue), and a lower part (orange). The Treble part starts with a quarter note G4, followed by a whole rest. The Bass part starts with a whole rest, followed by a quarter note G3, then a quarter note A3, and a quarter note B3. The lower part starts with a quarter note G3, followed by a quarter note A3, and a quarter note B3. The score is divided into three measures by vertical bar lines.

40

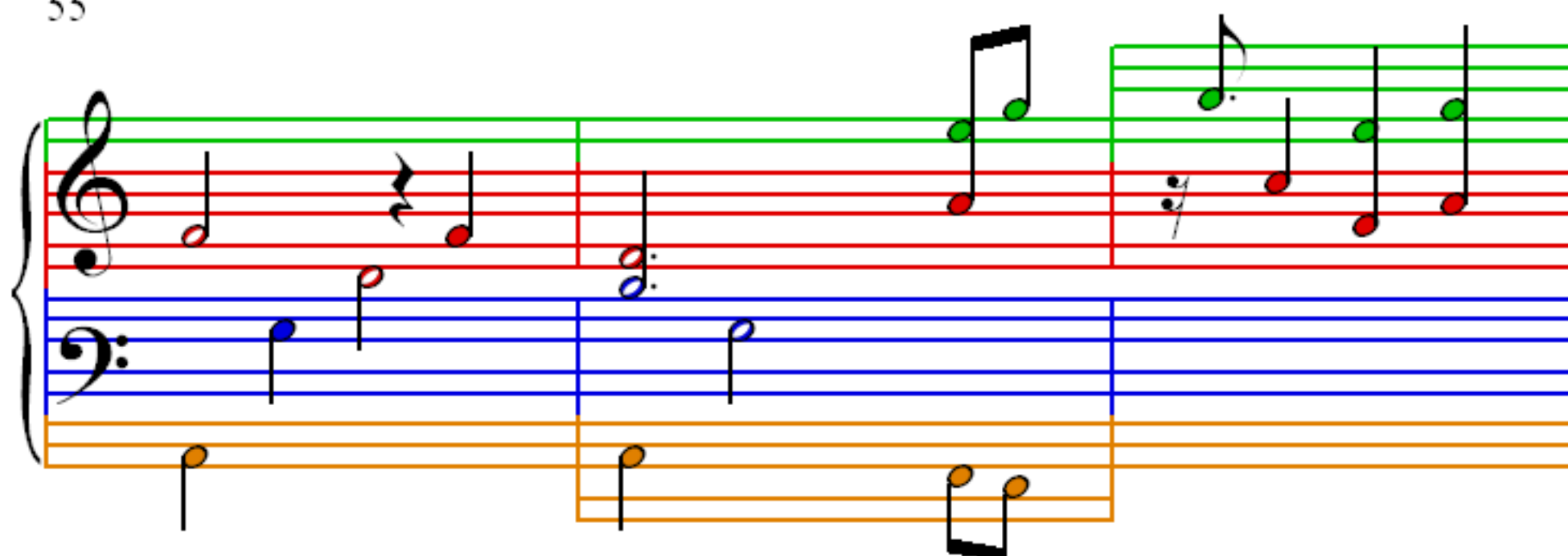
Musical score for Example 1, measures 40-42. The score is for piano and features three staves: Treble, Middle, and Bass. The Treble staff has a red background, the Middle staff has a blue background, and the Bass staff has an orange background. The music is in 4/4 time and includes various musical notations such as notes, rests, and ties.

46

Example 10-10 shows measures 46–48. The treble staff (red) contains a melody of eighth notes, while the bass staff (blue) contains a bass line of eighth notes. The key signature is one flat (B-flat), and the time signature is 4/4. The music is in a major mode, as indicated by the natural sign on the F in the bass staff.

A musical score for the song 'The Rose Tree'. The score is written for a piano and voice. The piano part is in 3/4 time and consists of a melody in the right hand and a bass line in the left hand. The melody is written on a treble clef staff with a key signature of one flat (B-flat). The bass line is written on a bass clef staff. The voice part is written on a single staff with a treble clef and a key signature of one flat. The score is divided into three measures. The first measure shows the piano introduction and the first line of the voice melody. The second measure shows the continuation of the piano melody and the second line of the voice melody. The third measure shows the final line of the piano melody and the final line of the voice melody. The piano part ends with a double bar line and a repeat sign. The voice part ends with a double bar line and a repeat sign.

55



58

