

# Greatest Love of All

Whitney Houston

1 = 80

Measures 1-2 of the piano accompaniment for 'Greatest Love of All'. The music is in 4/4 time with a tempo of 80 beats per minute. The right hand features a melody of eighth notes, while the left hand provides a bass line of quarter notes. The notes are color-coded: green for the melody and red for the bass line.

3

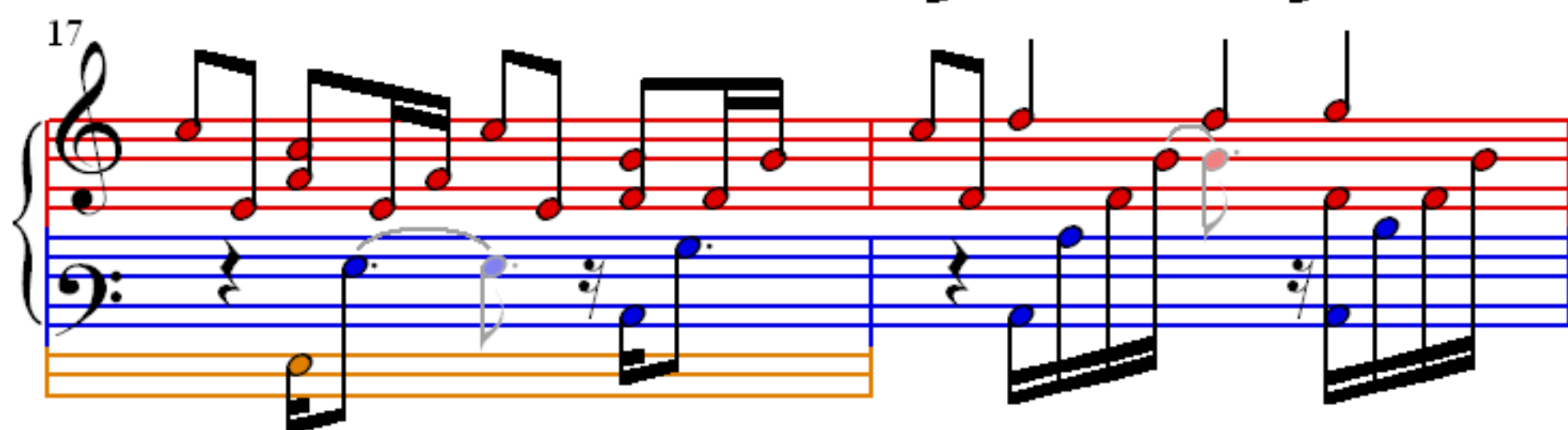
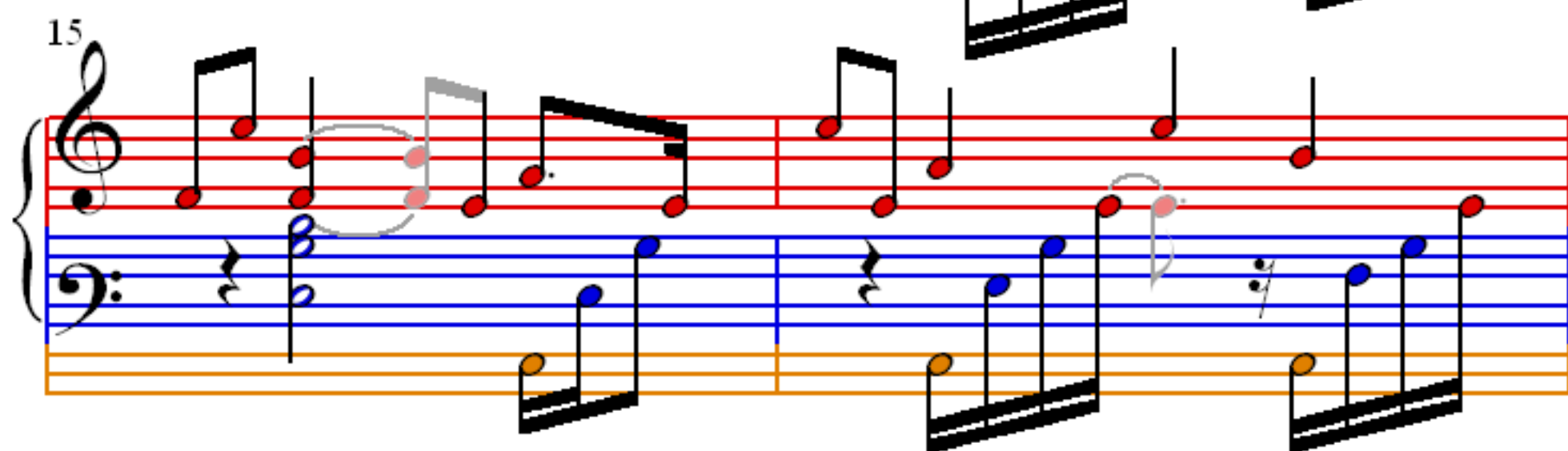
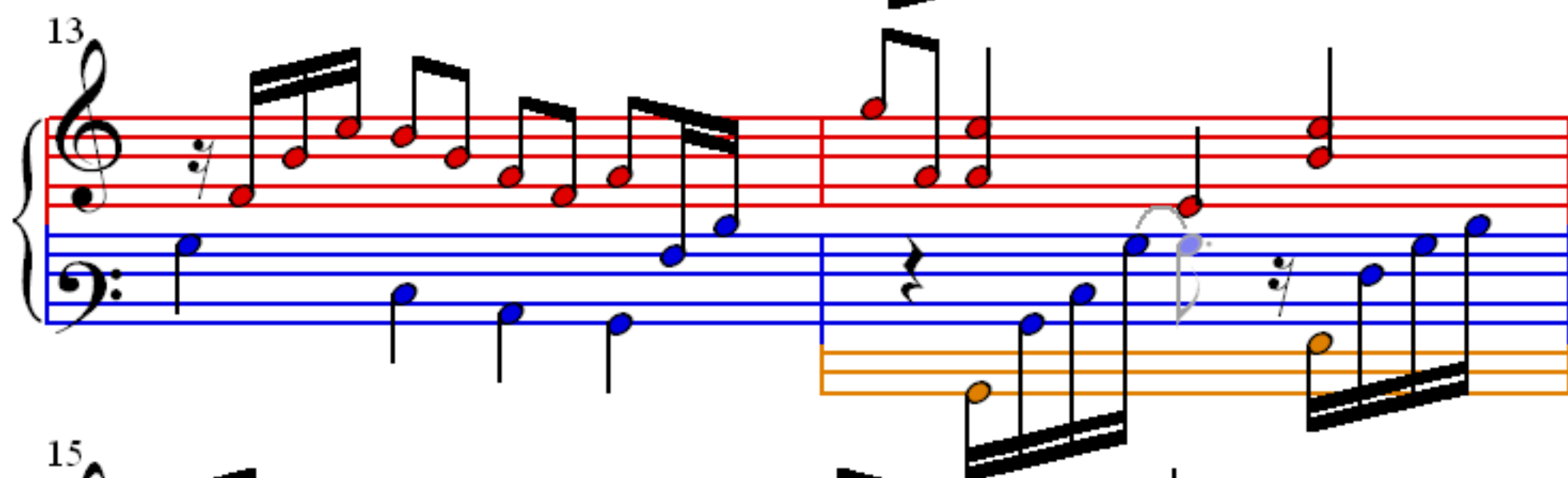
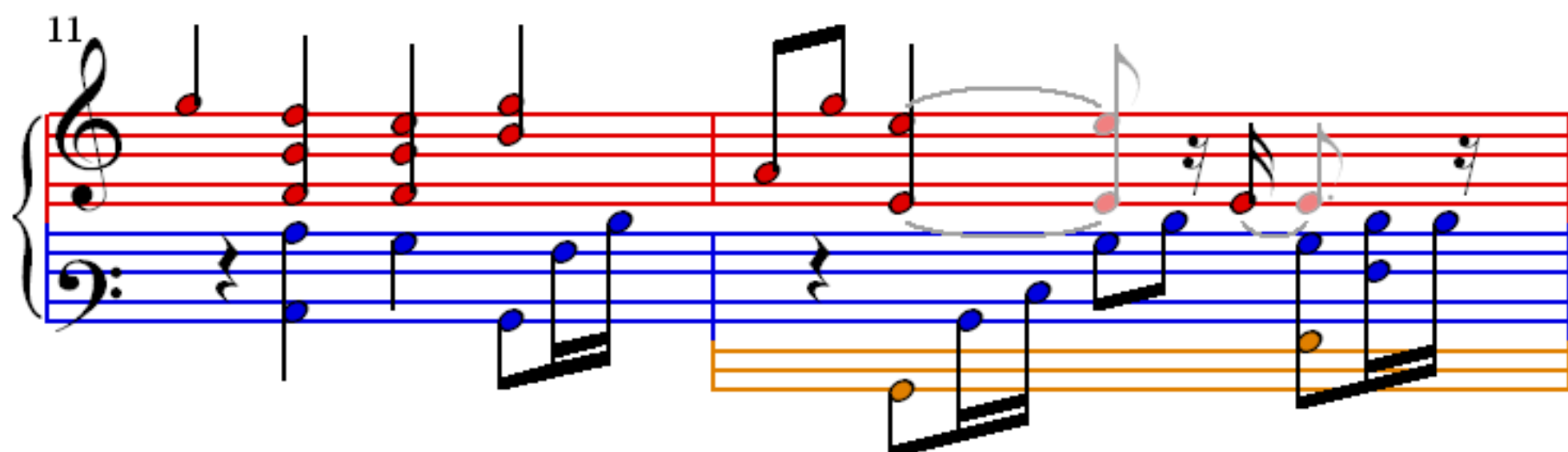
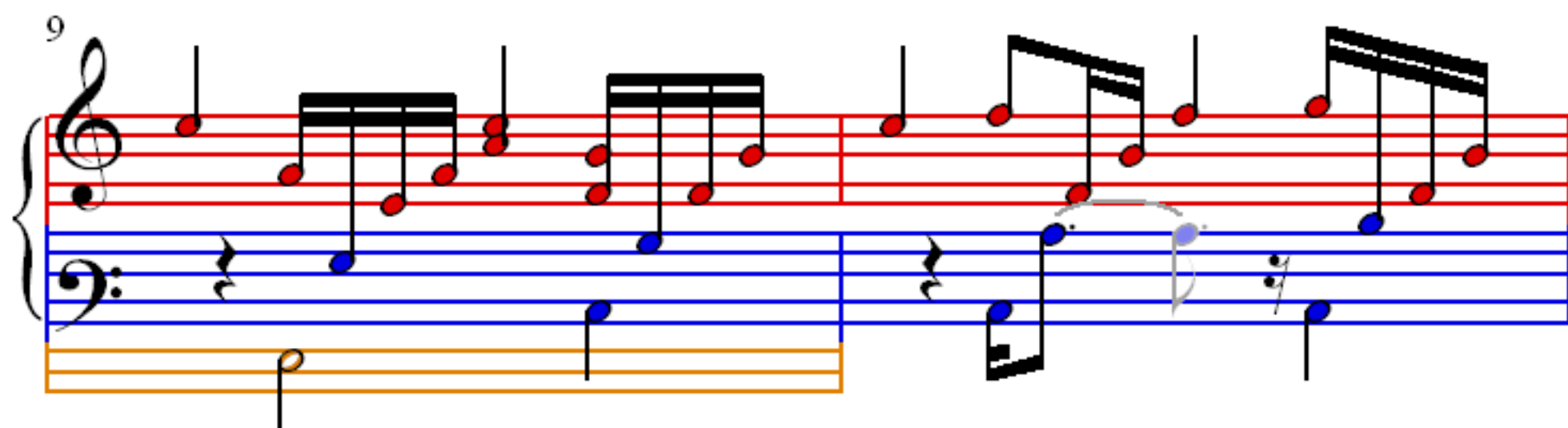
Measures 3-4 of the piano accompaniment. The right hand continues the melody with eighth notes, and the left hand plays a bass line of quarter notes. The notes are color-coded: green for the melody and red for the bass line.

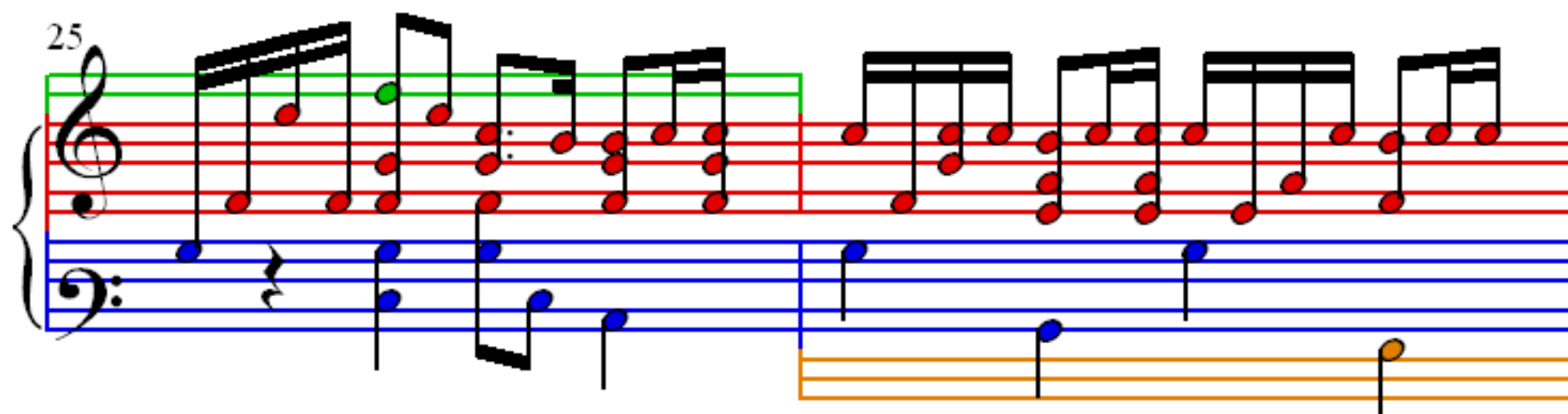
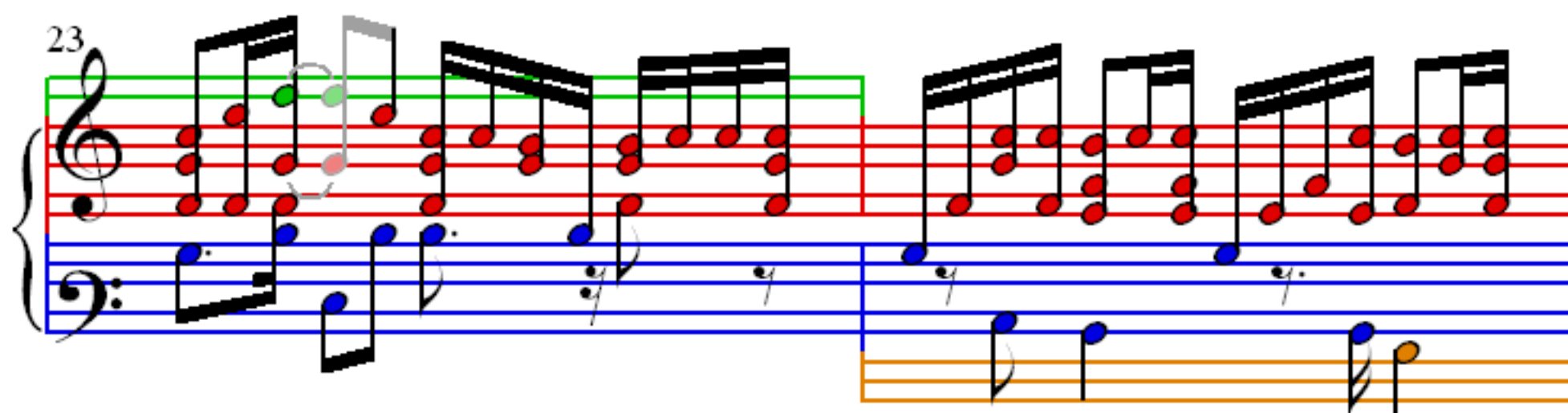
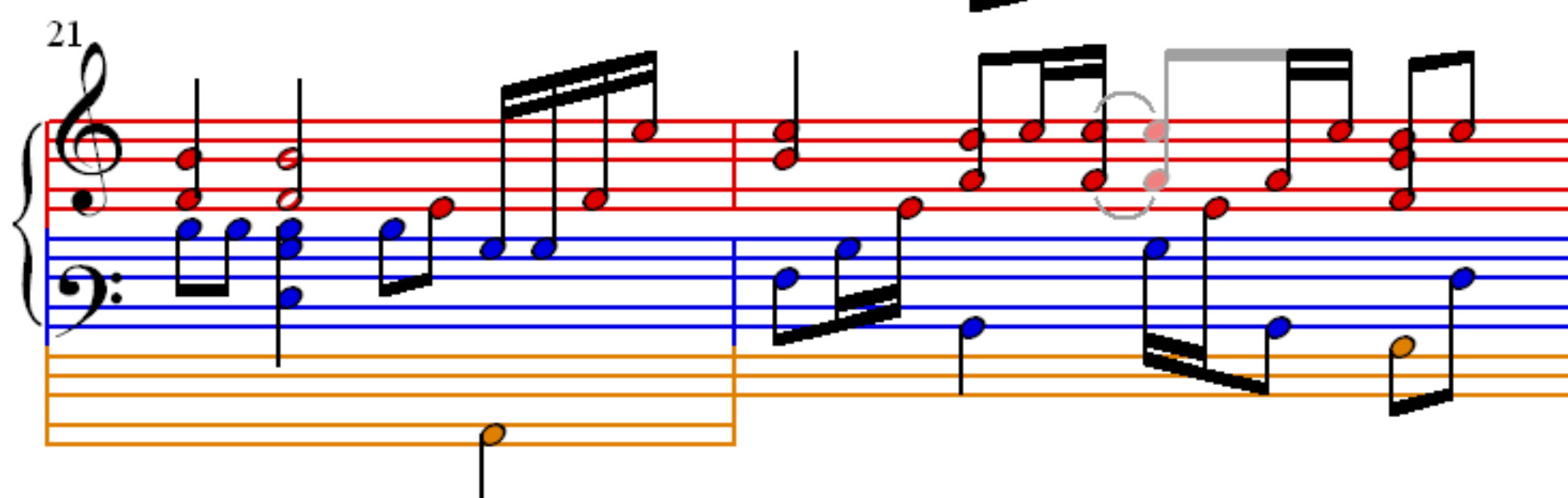
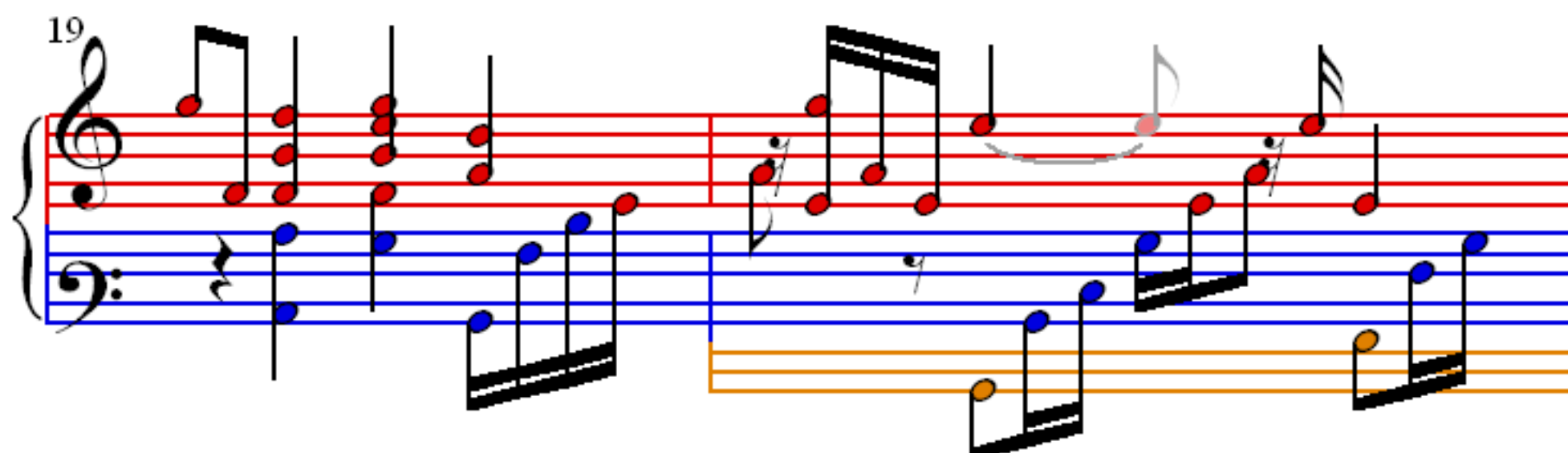
5

Measures 5-6 of the piano accompaniment. The right hand continues the melody with eighth notes, and the left hand plays a bass line of quarter notes. The notes are color-coded: green for the melody and red for the bass line.

7

Measures 7-8 of the piano accompaniment. The right hand continues the melody with eighth notes, and the left hand plays a bass line of quarter notes. The notes are color-coded: green for the melody and red for the bass line.



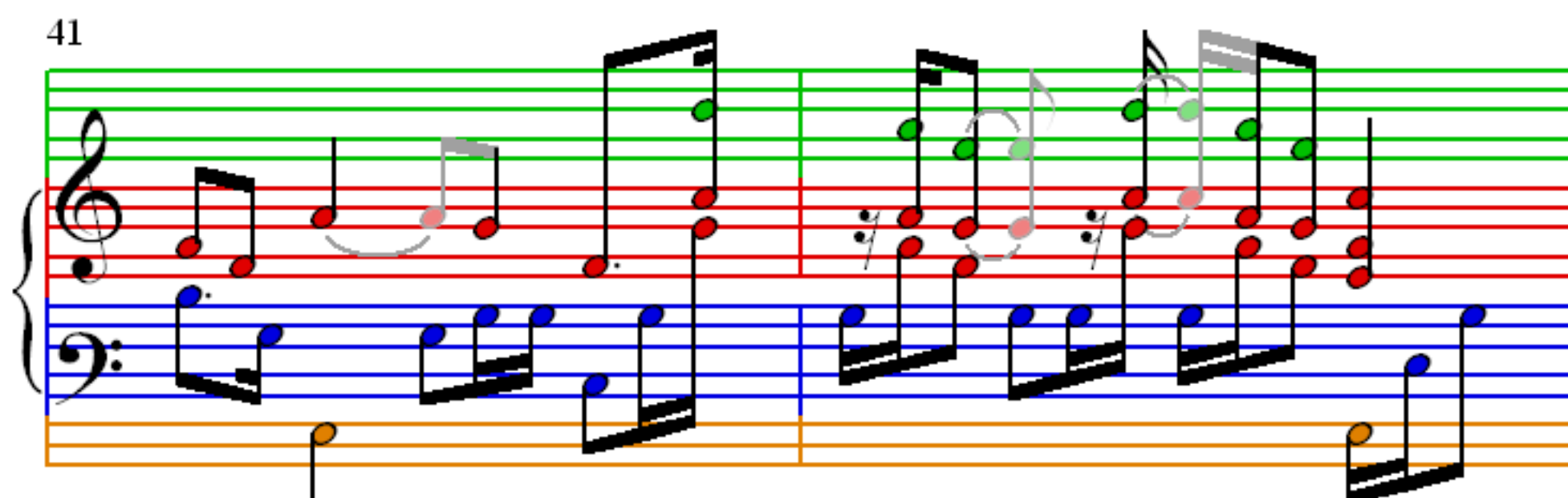
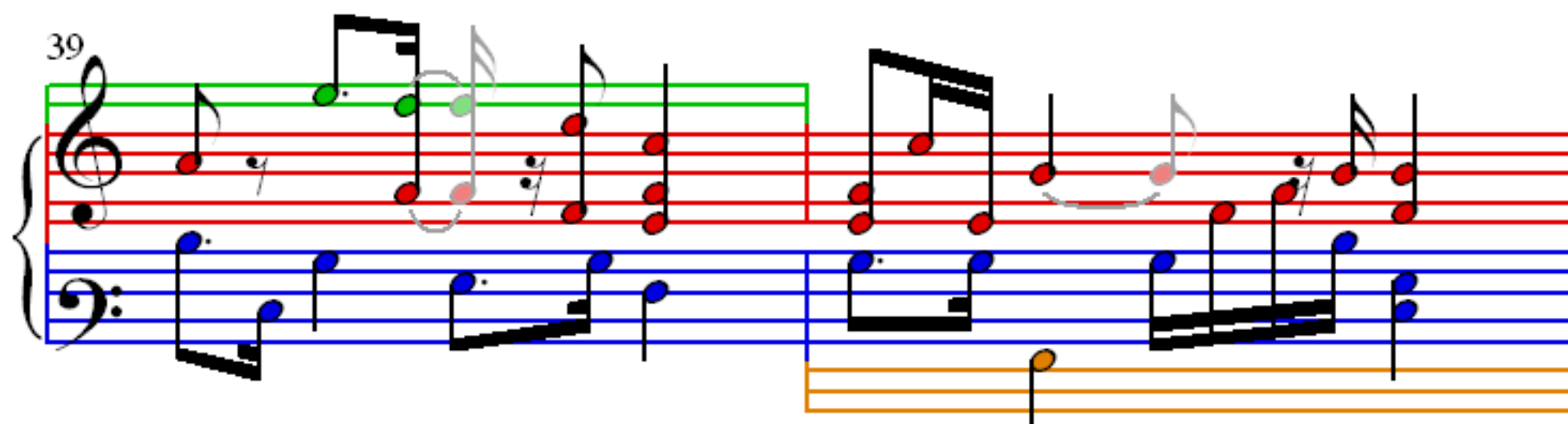
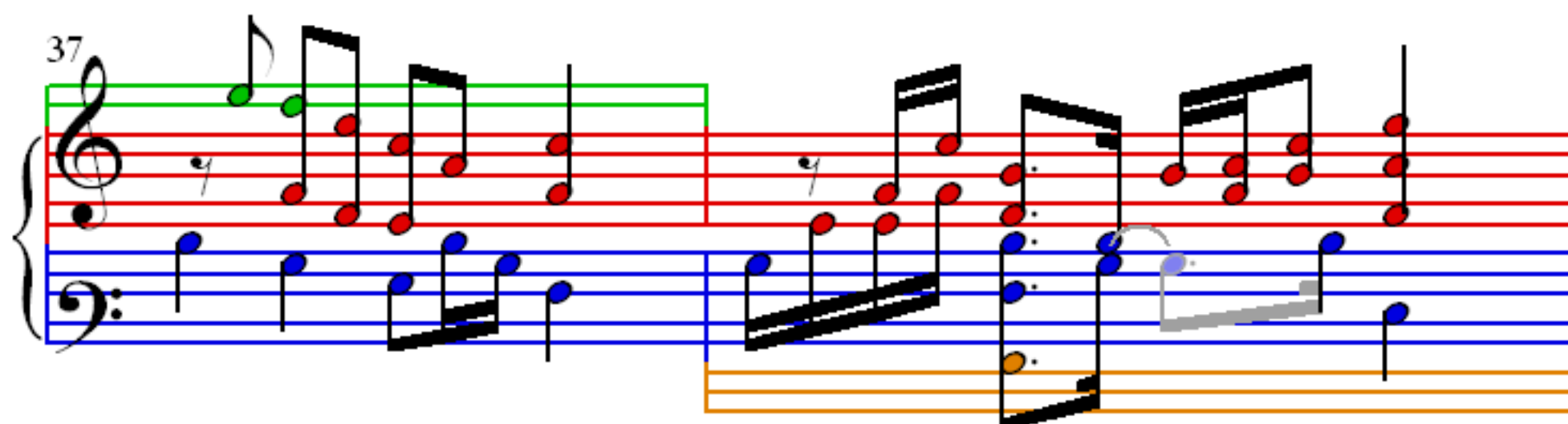
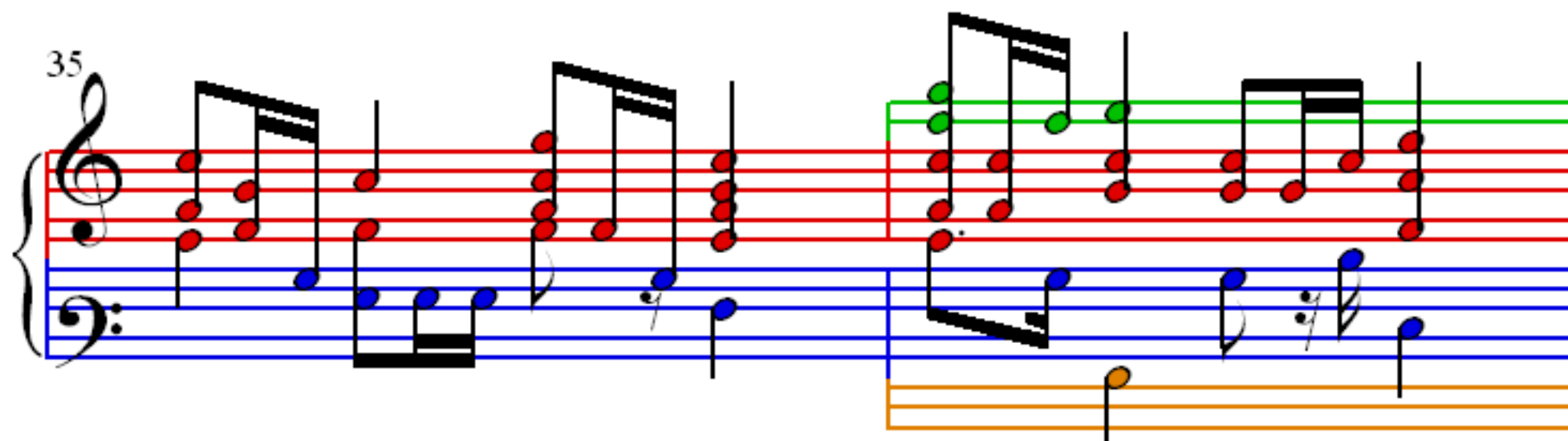


27

29

31

33



43

45

47

49



51

53

55

57

59

2/4 4/4

61

4/4

63

4/4

65

4/4



