

# Brown Eyed Girl

Van Morrison

$\text{♩} = 120$

The image displays a piano accompaniment for the song "Brown Eyed Girl" by Van Morrison. The score is written in 4/4 time, with a tempo of 120 beats per minute. It consists of four systems of music, each with a treble and bass staff. The treble staff uses a G-clef and the bass staff uses an F-clef. The key signature is one flat (B-flat major or D minor). The music is characterized by a simple, rhythmic melody in the treble and a steady bass line in the bass. The notes are color-coded: red for the main melody, green for the bass line, and blue for the chords. The score is divided into measures by vertical bar lines, and the systems are numbered 1, 3, 6, and 9. The first system (measures 1-2) shows a treble staff with a melody of eighth and quarter notes, and a bass staff with a simple bass line. The second system (measures 3-5) continues the melody and bass line. The third system (measures 6-8) features a treble staff with a melody of eighth and quarter notes, and a bass staff with a simple bass line. The fourth system (measures 9-11) shows a treble staff with a melody of eighth and quarter notes, and a bass staff with a simple bass line. The score is written on a white background with a green treble staff and a blue bass staff. The notes are color-coded: red for the main melody, green for the bass line, and blue for the chords. The score is divided into measures by vertical bar lines, and the systems are numbered 1, 3, 6, and 9.

12

Handwritten musical notation for measures 12, 13, and 14. The notation is on a grand staff with treble and bass clefs. The notes are color-coded: red for the melody, blue for the bass line, and orange for the right-hand accompaniment. Measure 12 starts with a treble clef and a key signature of one flat. The melody in measure 12 is G4 (red), A4 (red), B4 (red), C5 (red), D5 (red), E5 (red), F5 (red), G5 (red). The bass line in measure 12 is G2 (blue), A2 (blue), B2 (blue), C3 (blue), D3 (blue), E3 (blue), F3 (blue), G3 (blue). The right-hand accompaniment in measure 12 is G4 (orange), A4 (orange), B4 (orange), C5 (orange), D5 (orange), E5 (orange), F5 (orange), G5 (orange). Measure 13 continues the melody and bass line. Measure 14 continues the melody and bass line.

15

Handwritten musical notation for measures 15, 16, and 17. The notation is on a grand staff with treble and bass clefs. The notes are color-coded: red for the melody, blue for the bass line, and orange for the right-hand accompaniment. Measure 15 starts with a treble clef and a key signature of one flat. The melody in measure 15 is G4 (red), A4 (red), B4 (red), C5 (red), D5 (red), E5 (red), F5 (red), G5 (red). The bass line in measure 15 is G2 (blue), A2 (blue), B2 (blue), C3 (blue), D3 (blue), E3 (blue), F3 (blue), G3 (blue). The right-hand accompaniment in measure 15 is G4 (orange), A4 (orange), B4 (orange), C5 (orange), D5 (orange), E5 (orange), F5 (orange), G5 (orange). Measure 16 continues the melody and bass line. Measure 17 continues the melody and bass line.

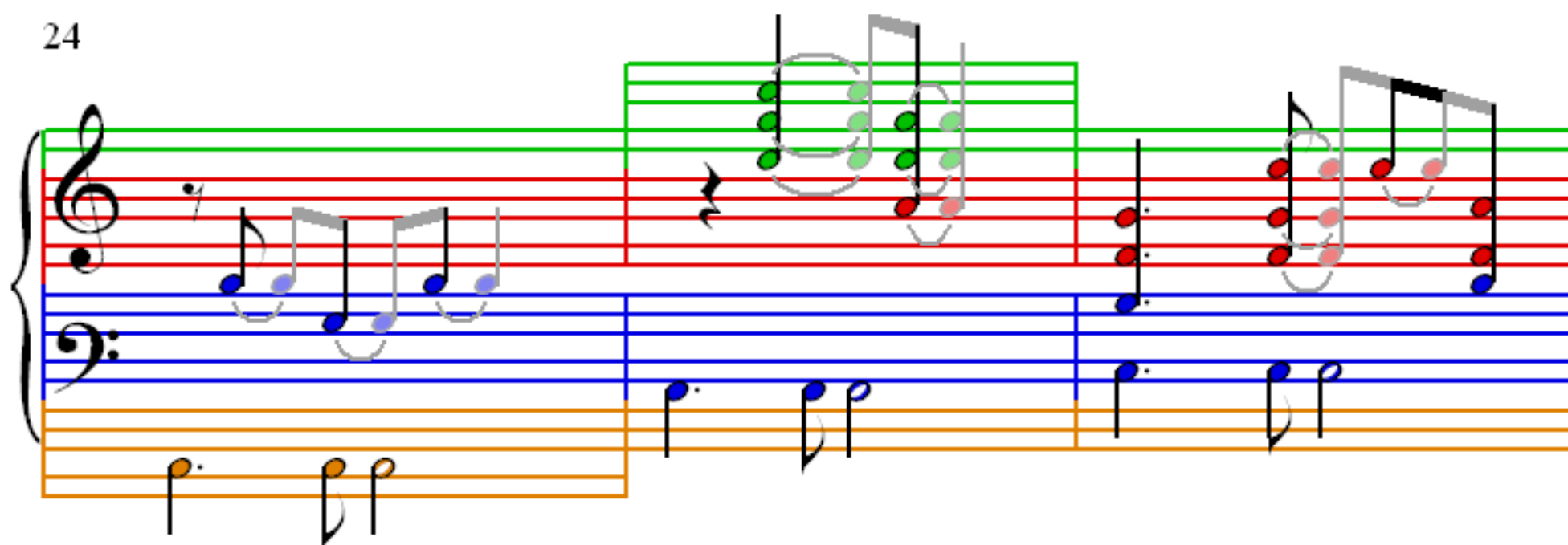
18

Handwritten musical notation for measures 18, 19, and 20. The notation is on a grand staff with treble and bass clefs. The notes are color-coded: red for the melody, blue for the bass line, and orange for the right-hand accompaniment. Measure 18 starts with a treble clef and a key signature of one flat. The melody in measure 18 is G4 (red), A4 (red), B4 (red), C5 (red), D5 (red), E5 (red), F5 (red), G5 (red). The bass line in measure 18 is G2 (blue), A2 (blue), B2 (blue), C3 (blue), D3 (blue), E3 (blue), F3 (blue), G3 (blue). The right-hand accompaniment in measure 18 is G4 (orange), A4 (orange), B4 (orange), C5 (orange), D5 (orange), E5 (orange), F5 (orange), G5 (orange). Measure 19 continues the melody and bass line. Measure 20 continues the melody and bass line.

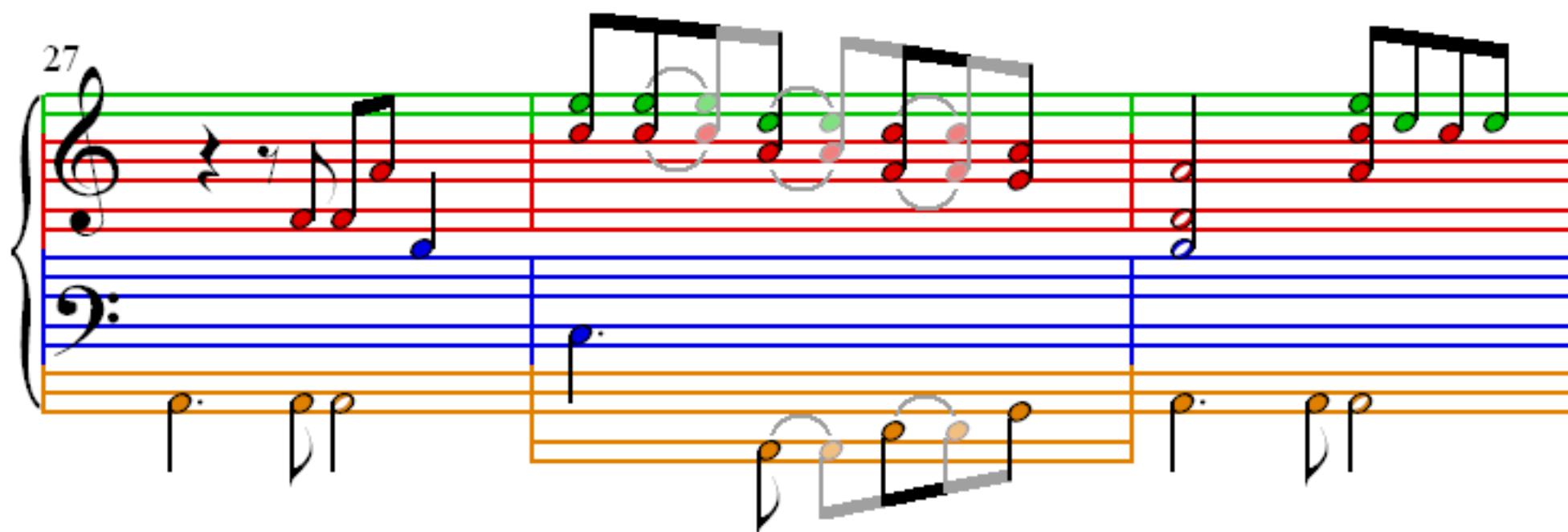
21

Handwritten musical notation for measures 21, 22, and 23. The notation is on a grand staff with treble and bass clefs. The notes are color-coded: red for the melody, blue for the bass line, and orange for the right-hand accompaniment. Measure 21 starts with a treble clef and a key signature of one flat. The melody in measure 21 is G4 (red), A4 (red), B4 (red), C5 (red), D5 (red), E5 (red), F5 (red), G5 (red). The bass line in measure 21 is G2 (blue), A2 (blue), B2 (blue), C3 (blue), D3 (blue), E3 (blue), F3 (blue), G3 (blue). The right-hand accompaniment in measure 21 is G4 (orange), A4 (orange), B4 (orange), C5 (orange), D5 (orange), E5 (orange), F5 (orange), G5 (orange). Measure 22 continues the melody and bass line. Measure 23 continues the melody and bass line.

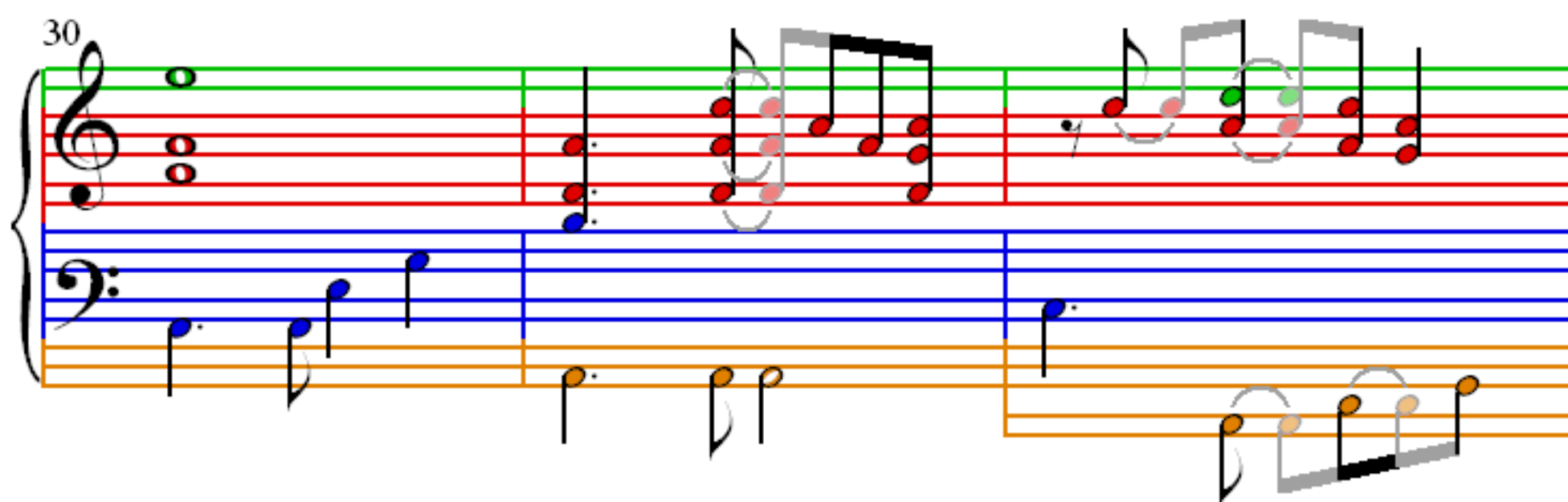
24



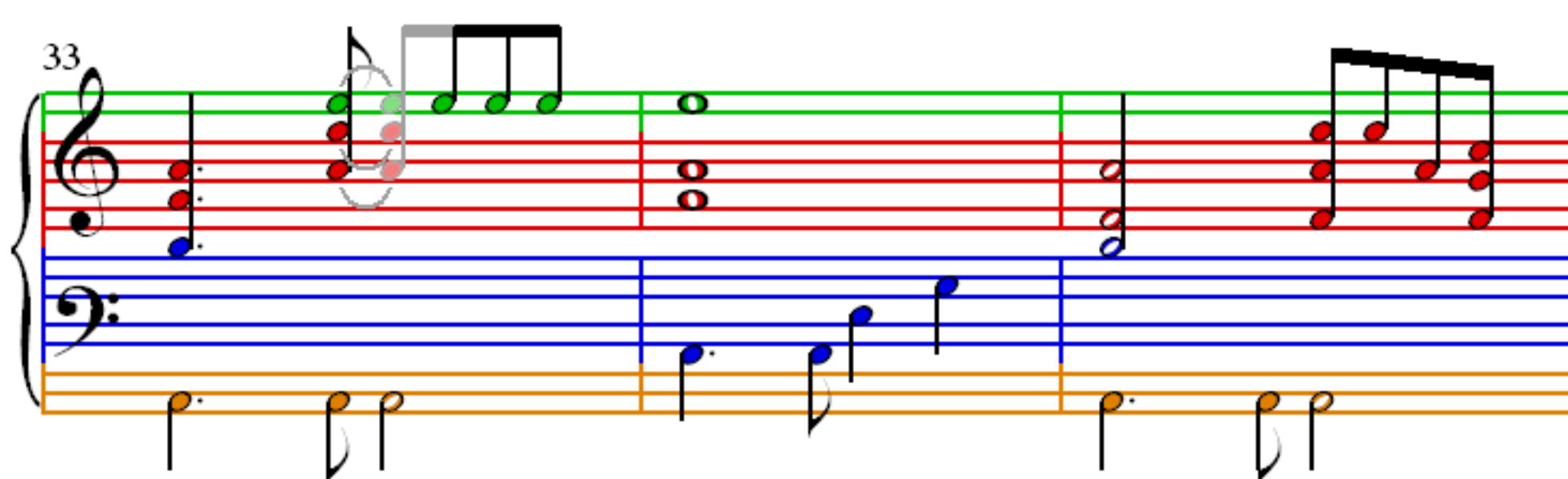
27



30



33



36

Measures 36-38 of the piano accompaniment for 'Brown Eyed Girl'. The system consists of a grand staff with a treble and bass clef. The treble staff has a green line at the top. The bass staff has a blue line at the top and an orange line at the bottom. The music is in 4/4 time. Measure 36: Treble has a quarter rest, then a quarter note G4, a quarter note A4, and a quarter note B4. Bass has a quarter note G2, a quarter note F2, and a quarter note E2. Measure 37: Treble has a quarter note G4, a quarter note A4, and a quarter note B4. Bass has a quarter note G2, a quarter note F2, and a quarter note E2. Measure 38: Treble has a quarter note G4, a quarter note A4, and a quarter note B4. Bass has a quarter note G2, a quarter note F2, and a quarter note E2.

39

Measures 39-41 of the piano accompaniment for 'Brown Eyed Girl'. The system consists of a grand staff with a treble and bass clef. The treble staff has a green line at the top. The bass staff has a blue line at the top and an orange line at the bottom. The music is in 4/4 time. Measure 39: Treble has a quarter note G4, a quarter note A4, and a quarter note B4. Bass has a quarter note G2, a quarter note F2, and a quarter note E2. Measure 40: Treble has a quarter note G4, a quarter note A4, and a quarter note B4. Bass has a quarter note G2, a quarter note F2, and a quarter note E2. Measure 41: Treble has a quarter note G4, a quarter note A4, and a quarter note B4. Bass has a quarter note G2, a quarter note F2, and a quarter note E2.

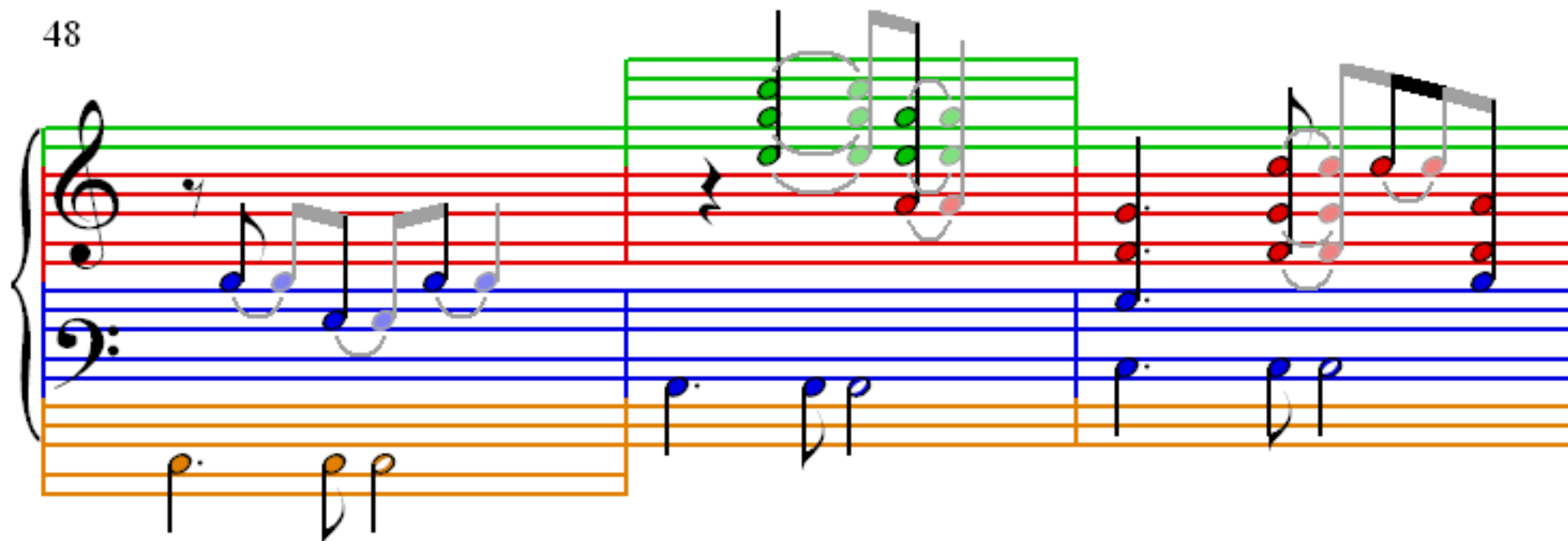
42

Measures 42-44 of the piano accompaniment for 'Brown Eyed Girl'. The system consists of a grand staff with a treble and bass clef. The treble staff has a green line at the top. The bass staff has a blue line at the top and an orange line at the bottom. The music is in 4/4 time. Measure 42: Treble has a quarter note G4, a quarter note A4, and a quarter note B4. Bass has a quarter note G2, a quarter note F2, and a quarter note E2. Measure 43: Treble has a quarter note G4, a quarter note A4, and a quarter note B4. Bass has a quarter note G2, a quarter note F2, and a quarter note E2. Measure 44: Treble has a quarter note G4, a quarter note A4, and a quarter note B4. Bass has a quarter note G2, a quarter note F2, and a quarter note E2.

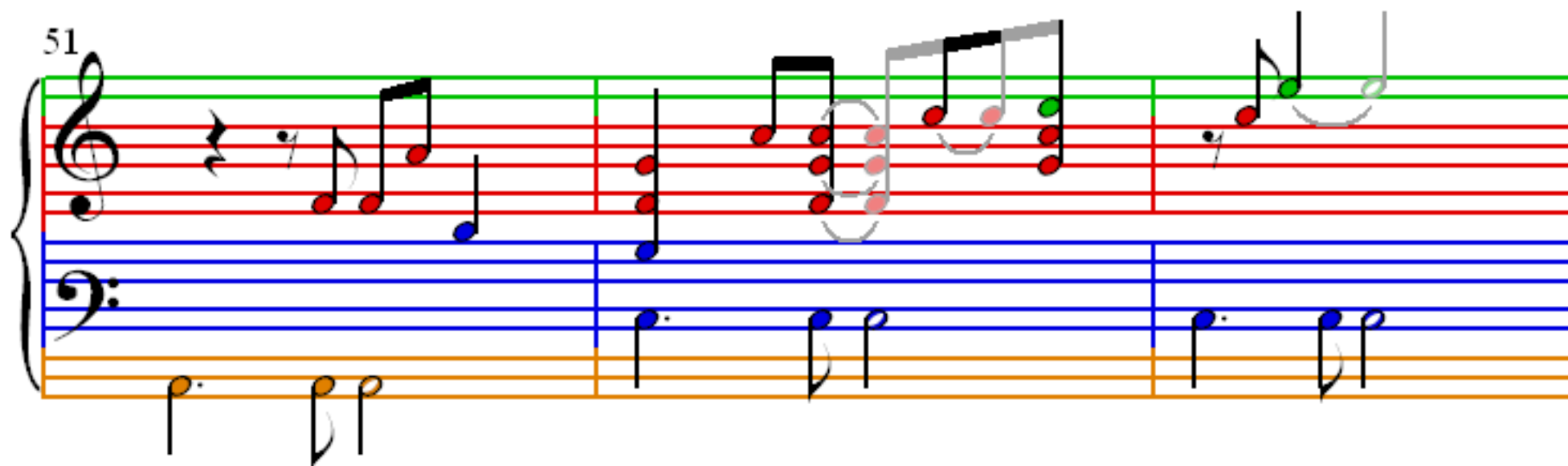
45

Measures 45-47 of the piano accompaniment for 'Brown Eyed Girl'. The system consists of a grand staff with a treble and bass clef. The treble staff has a green line at the top. The bass staff has a blue line at the top and an orange line at the bottom. The music is in 4/4 time. Measure 45: Treble has a quarter note G4, a quarter note A4, and a quarter note B4. Bass has a quarter note G2, a quarter note F2, and a quarter note E2. Measure 46: Treble has a quarter note G4, a quarter note A4, and a quarter note B4. Bass has a quarter note G2, a quarter note F2, and a quarter note E2. Measure 47: Treble has a quarter note G4, a quarter note A4, and a quarter note B4. Bass has a quarter note G2, a quarter note F2, and a quarter note E2.

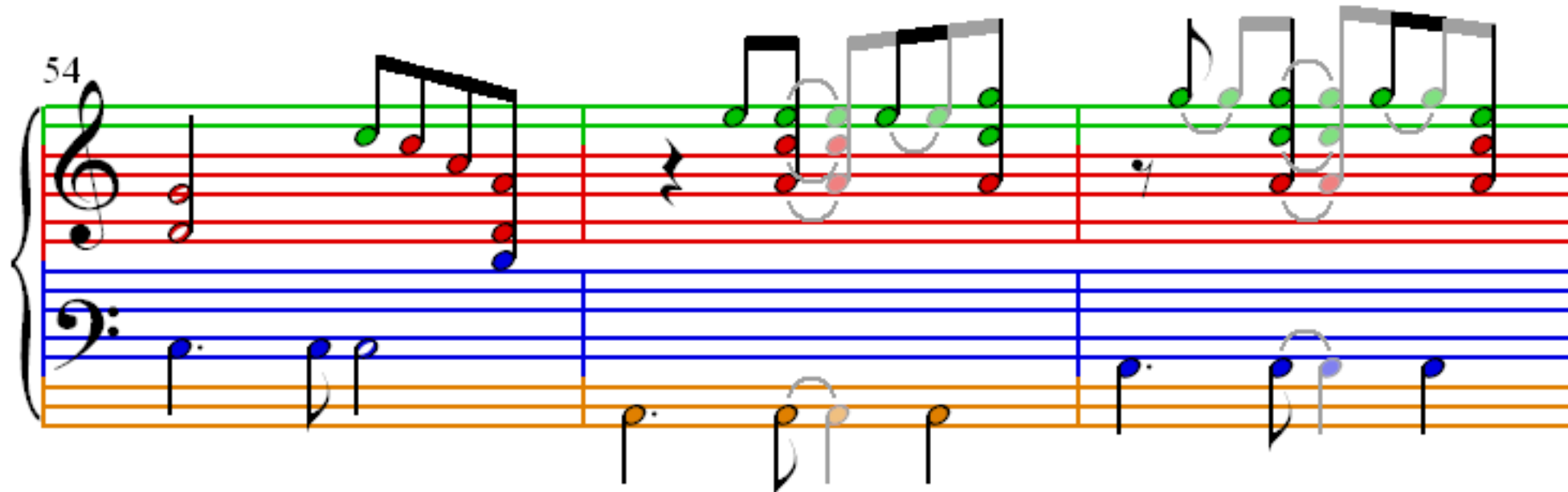
48



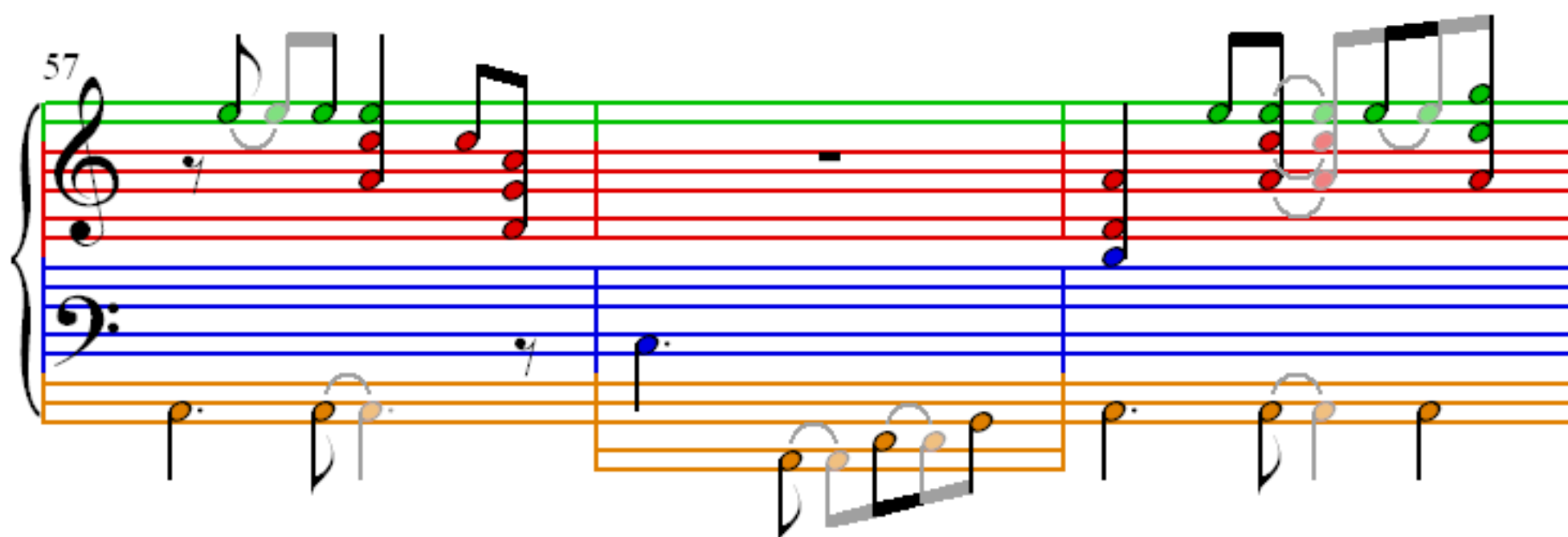
51



54



57



60

Measures 60-62. Treble clef: Measure 60 has a quarter rest followed by a slur over four eighth notes (G4, A4, B4, C5, all green). Measure 61 has a quarter rest followed by a slur over four eighth notes (D5, C5, B4, A4, all green). Measure 62 has a whole rest followed by a slur over two eighth notes (G4, F4, both red). Bass clef: Measure 60 has a quarter note G2 (blue) followed by a slur over two eighth notes (F2, E2, both blue). Measure 61 has a quarter note D2 (orange) followed by a slur over two eighth notes (C2, B1, both orange). Measure 62 has a quarter note G1 (blue) followed by a slur over two eighth notes (F1, E1, both orange).

63

Measures 63-65. Treble clef: Measure 63 has a quarter note G4 (red) followed by a slur over two eighth notes (F4, E4, both red). Measure 64 has a quarter note D5 (red) followed by a slur over two eighth notes (C5, B4, both red). Measure 65 has a whole note G4 (blue). Bass clef: Measure 63 has a quarter note G2 (orange) followed by a slur over two eighth notes (F2, E2, both orange). Measure 64 has a quarter note D2 (orange) followed by a slur over two eighth notes (C2, B1, both orange). Measure 65 has a quarter note G1 (orange) followed by a slur over two eighth notes (F1, E1, both orange).

66

Measures 66-68. Treble clef: Empty. Bass clef: Measure 66 has a quarter note G2 (orange) followed by a slur over two eighth notes (F2, E2, both orange). Measure 67 has a quarter note D2 (orange) followed by a slur over two eighth notes (C2, B1, both orange). Measure 68 has a quarter note G1 (blue) followed by a slur over two eighth notes (F1, E1, both blue).

69

Measures 69-71. Treble clef: Empty. Bass clef: Measure 69 has a quarter note G2 (blue) followed by a slur over two eighth notes (F2, E2, both orange). Measure 70 has a quarter note D2 (blue) followed by a slur over two eighth notes (C2, B1, both blue). Measure 71 has a quarter note G1 (blue) followed by a slur over two eighth notes (F1, E1, both orange).