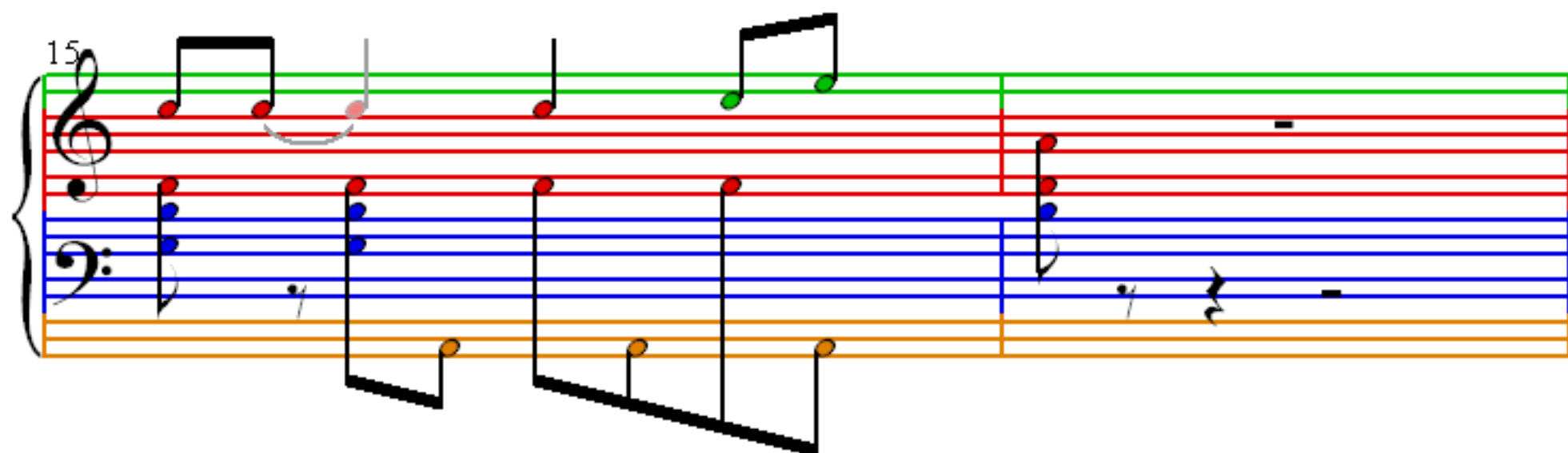
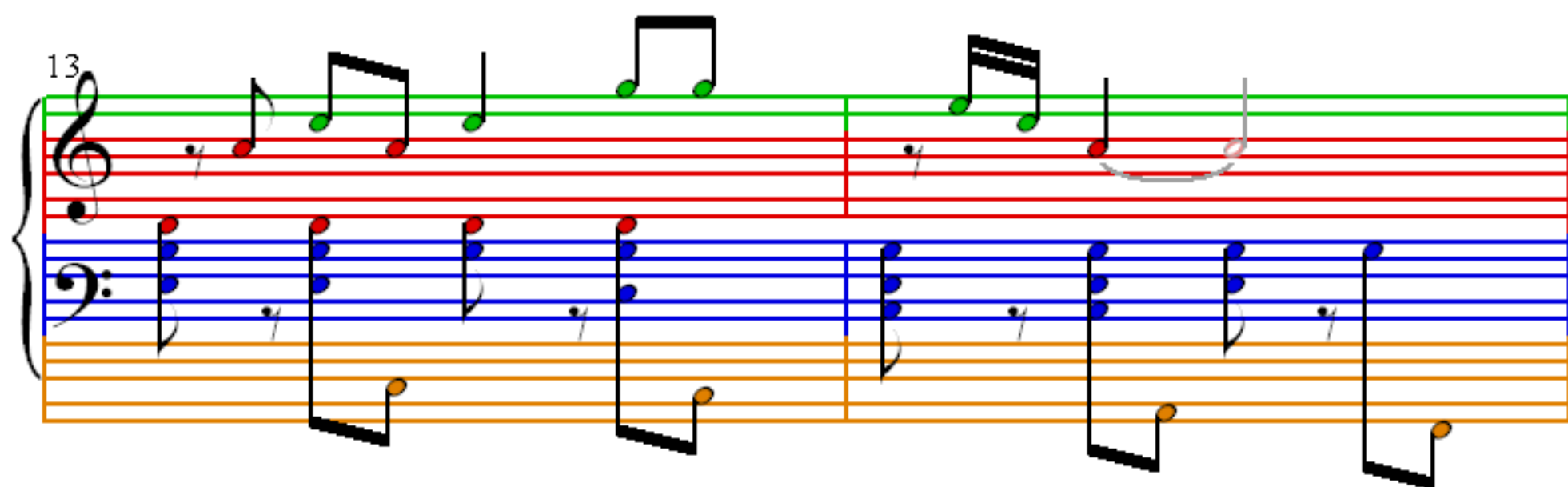
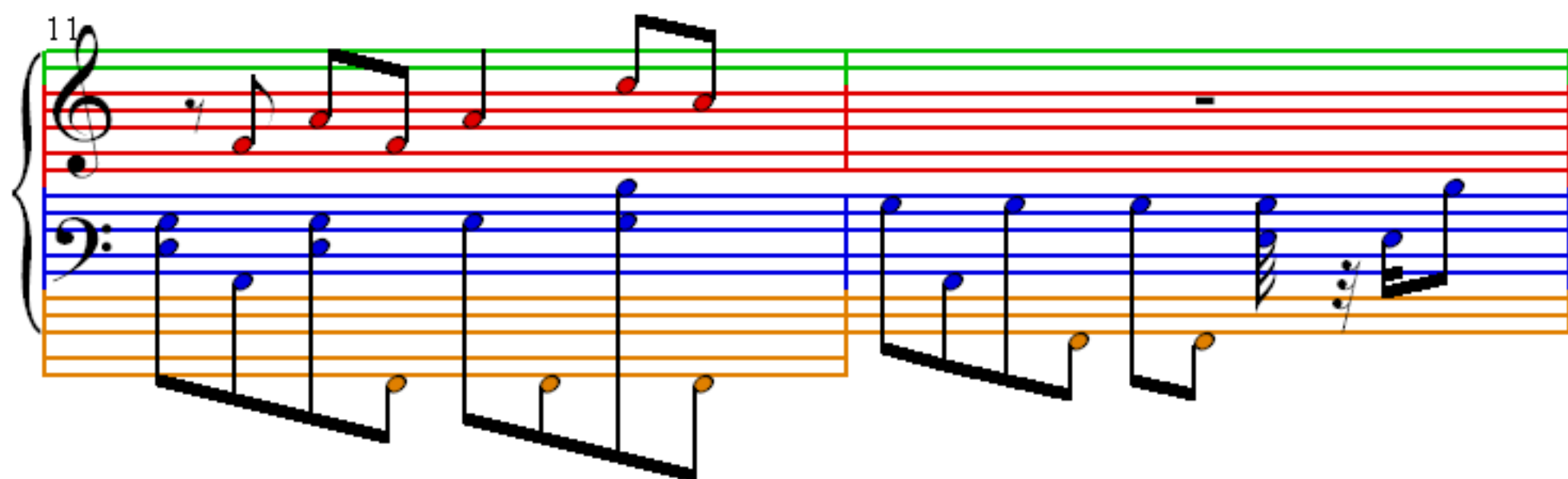
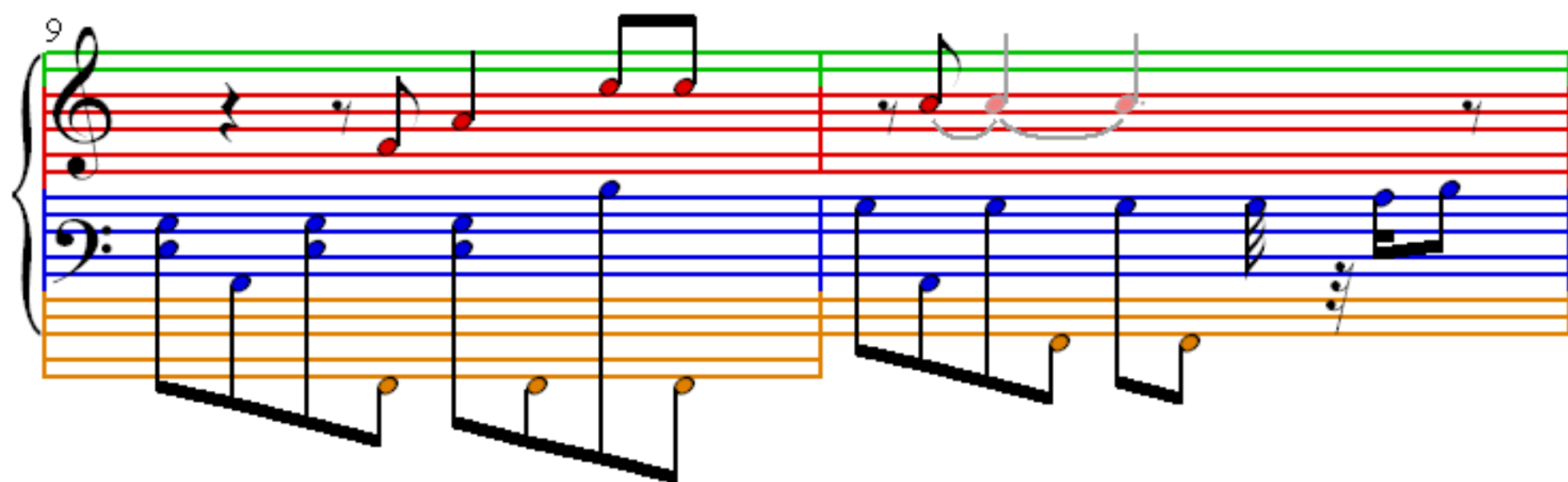


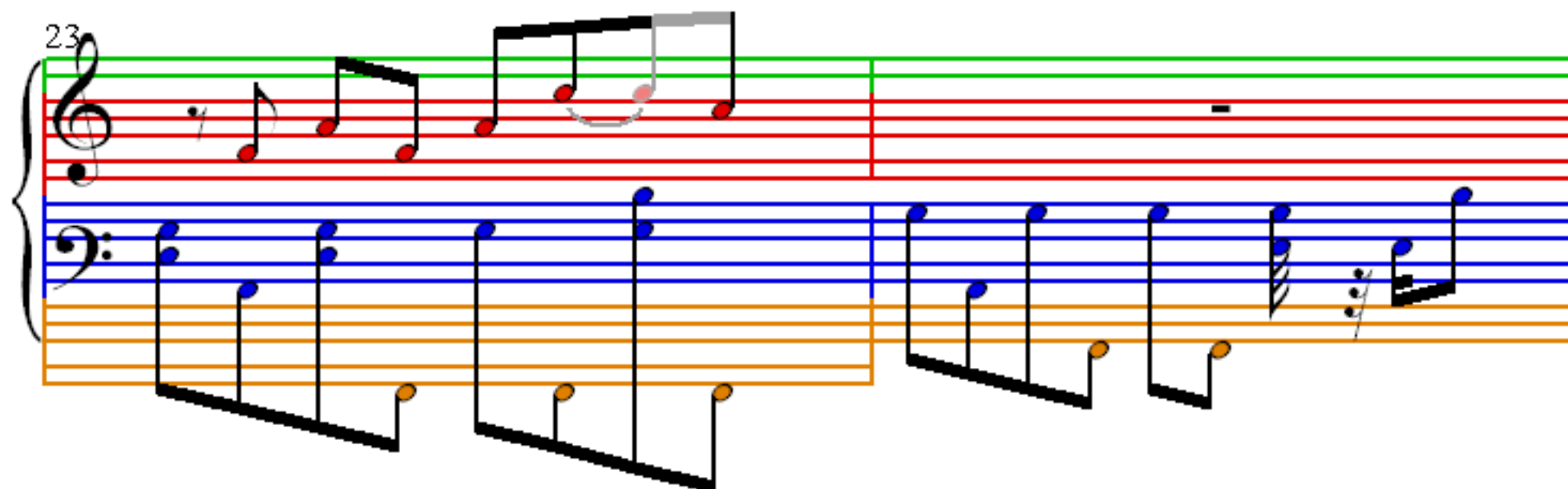
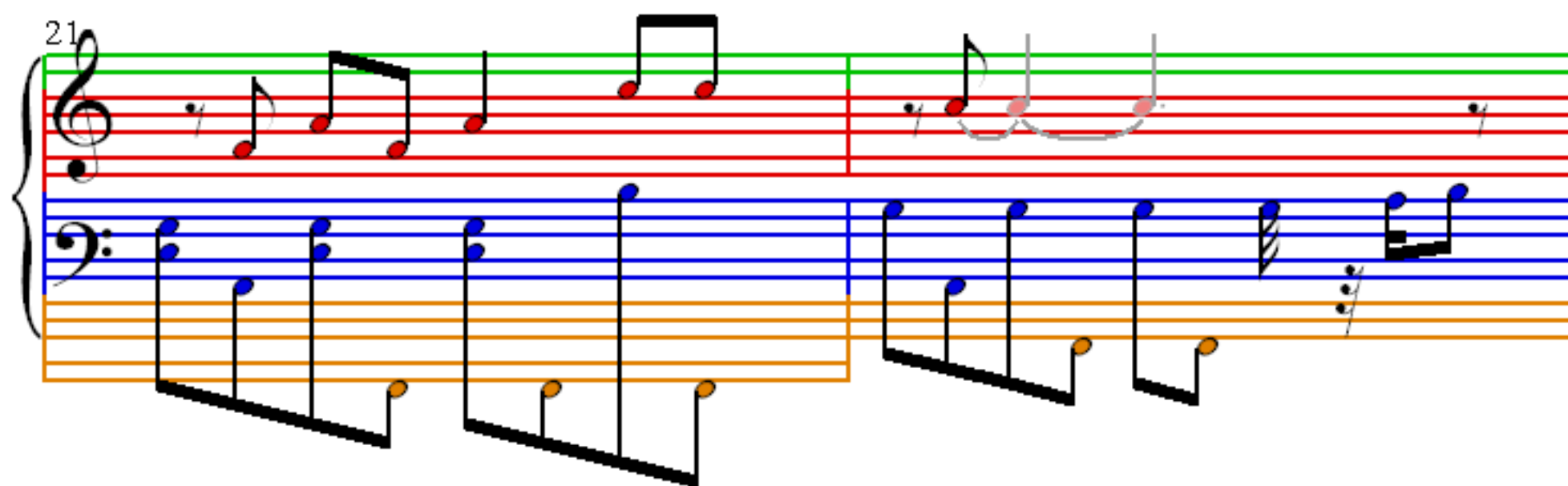
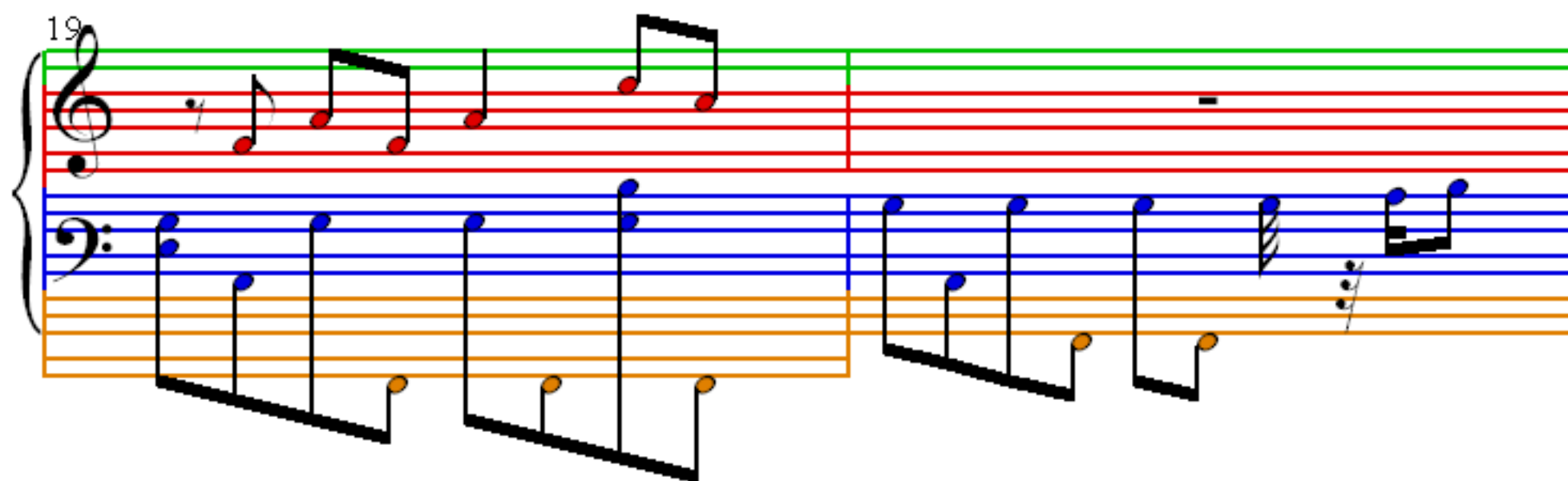
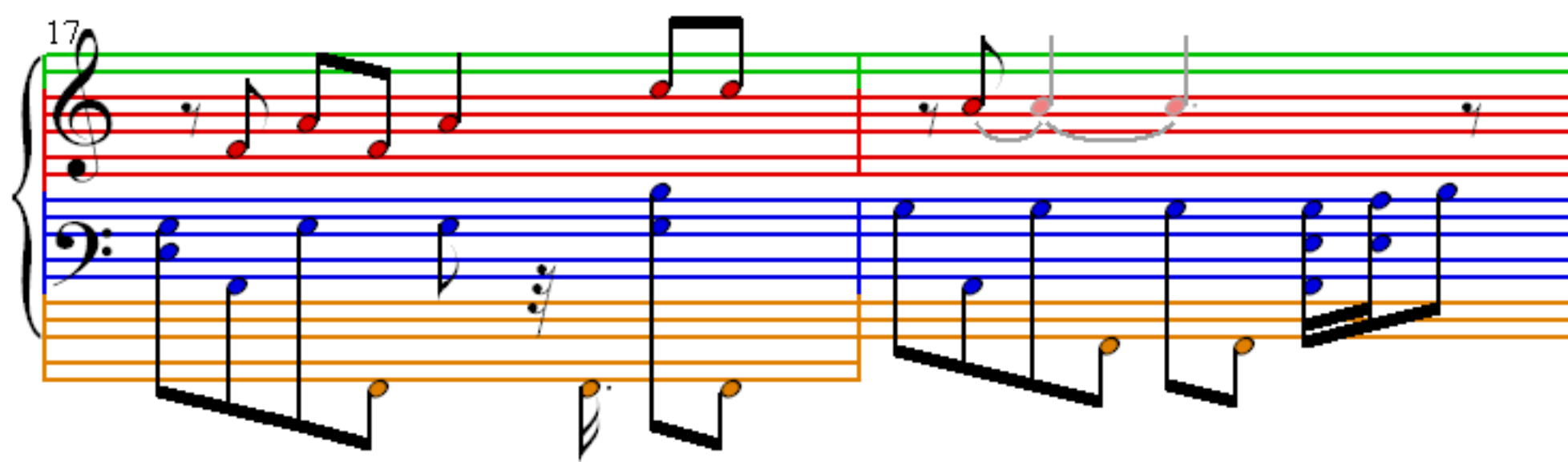
Imagine

John Lennon

♩ = 73

The musical score for the piano accompaniment of "Imagine" is presented in four systems, each consisting of a grand staff (treble and bass clefs). The time signature is 4/4, and the tempo is marked as ♩ = 73. The score is written in C major, with a key signature of one flat (Bb) in the bass clef. The first system (measures 1-2) shows a simple bass line in the left hand and a whole rest in the right hand. The second system (measures 3-4) continues the bass line. The third system (measures 5-6) introduces a melody in the right hand, starting with a quarter rest followed by a quarter note, and then a half note. The fourth system (measures 7-8) continues the melody in the right hand. The bass line is consistent throughout, featuring a simple eighth-note pattern in the left hand and a half-note pattern in the right hand.





25

27

29

31

A musical score for the song 'The Rose Tree'. The score is written for three parts: Treble Clef (top), Bass Clef (middle), and a third part (bottom). The Treble Clef part features a melody with notes in green, red, and pink, and a final note in pink. The Bass Clef part features a melody with notes in blue and orange. The third part features a melody with notes in orange. The score is divided into two measures by a vertical line. The first measure contains the first half of the melody, and the second measure contains the second half. The notes are color-coded to match the lyrics: green for 'The', red for 'tree', pink for 'that', blue for 'grows', and orange for 'underneath'. The Treble Clef part has a treble clef and a key signature of one sharp (F#). The Bass Clef part has a bass clef and a key signature of one sharp (F#). The third part has a bass clef and a key signature of one sharp (F#). The score is labeled with the number '33' in the top left corner.

35

The image shows a musical score for 'The Rose Tree'. It consists of two staves. The upper staff is a treble clef with a green line, and the lower staff is a bass clef with a blue line. The music is written in 2/4 time. The upper staff begins with a treble clef and a key signature of one sharp (F#). The lower staff begins with a bass clef and a key signature of one sharp (F#). The music is written in 2/4 time. The upper staff contains a melody of eighth and sixteenth notes, while the lower staff contains a bass line of eighth and sixteenth notes. The score is divided into two measures by a vertical bar line. The first measure contains the main melody, and the second measure contains a continuation of the melody. The notes are color-coded: red for the upper staff and blue for the lower staff. The score is numbered 35 in the top left corner.

A musical score for the song 'The Rose Tree'. The score is written for a piano and voice. The piano part is in 4/4 time and consists of two staves: a treble staff with a green key signature (one sharp) and a bass staff with a blue key signature (one flat). The melody is in the treble staff, and the accompaniment is in the bass staff. The voice part is written in a single staff with a red key signature (one sharp). The melody is in the voice staff, and the accompaniment is in the piano part. The score is divided into two systems. The first system contains measures 1 through 4, and the second system contains measures 5 through 8. The melody is a simple, catchy tune, and the accompaniment is a simple, rhythmic pattern. The score is written in a clear, legible font, and the notes are color-coded to match the key signature.

39

The image shows a musical score for the song 'The Rose Tree'. It consists of three staves. The top staff is a treble clef with a key signature of one sharp (F#) and a 2/4 time signature. The middle staff is a bass clef with a key signature of one sharp (F#). The bottom staff is a bass clef with a key signature of one sharp (F#). The music is written in a simple, folk-like style. The first staff has a treble clef and a key signature of one sharp (F#). The second staff has a bass clef and a key signature of one sharp (F#). The third staff has a bass clef and a key signature of one sharp (F#). The music is written in a simple, folk-like style. The first staff has a treble clef and a key signature of one sharp (F#). The second staff has a bass clef and a key signature of one sharp (F#). The third staff has a bass clef and a key signature of one sharp (F#). The music is written in a simple, folk-like style.

41

43

45

47

49

51

53

55