

# Sinfonia 10

by J. S. Bach (1685–1750) BWV 796

$\text{♩} = 70$

1

3

5

7

9

Measures 9-10. Treble clef: eighth notes, green and red stems. Bass clef: eighth notes, blue stems. A yellow highlight is under the first measure of the bass line.

11

Measures 11-12. Treble clef: eighth notes, green and red stems. Bass clef: eighth notes, blue stems.

13

Measures 13-14. Treble clef: eighth notes, green and red stems. Bass clef: eighth notes, blue stems. A yellow highlight is under the first measure of the bass line.

15

Measures 15-16. Treble clef: eighth notes, green and red stems. Bass clef: eighth notes, blue stems. A purple highlight is under the first measure of the treble line.

17

System 17: Treble clef (green notes), Bass clef (blue notes). The system contains two measures. The first measure has a treble staff with a series of eighth notes and a bass staff with a single blue note. The second measure has a treble staff with a series of eighth notes and a bass staff with a single blue note.

19

System 19: Treble clef (green notes), Bass clef (blue notes). The system contains two measures. The first measure has a treble staff with a series of eighth notes and a bass staff with a single blue note. The second measure has a treble staff with a series of eighth notes and a bass staff with a single blue note.

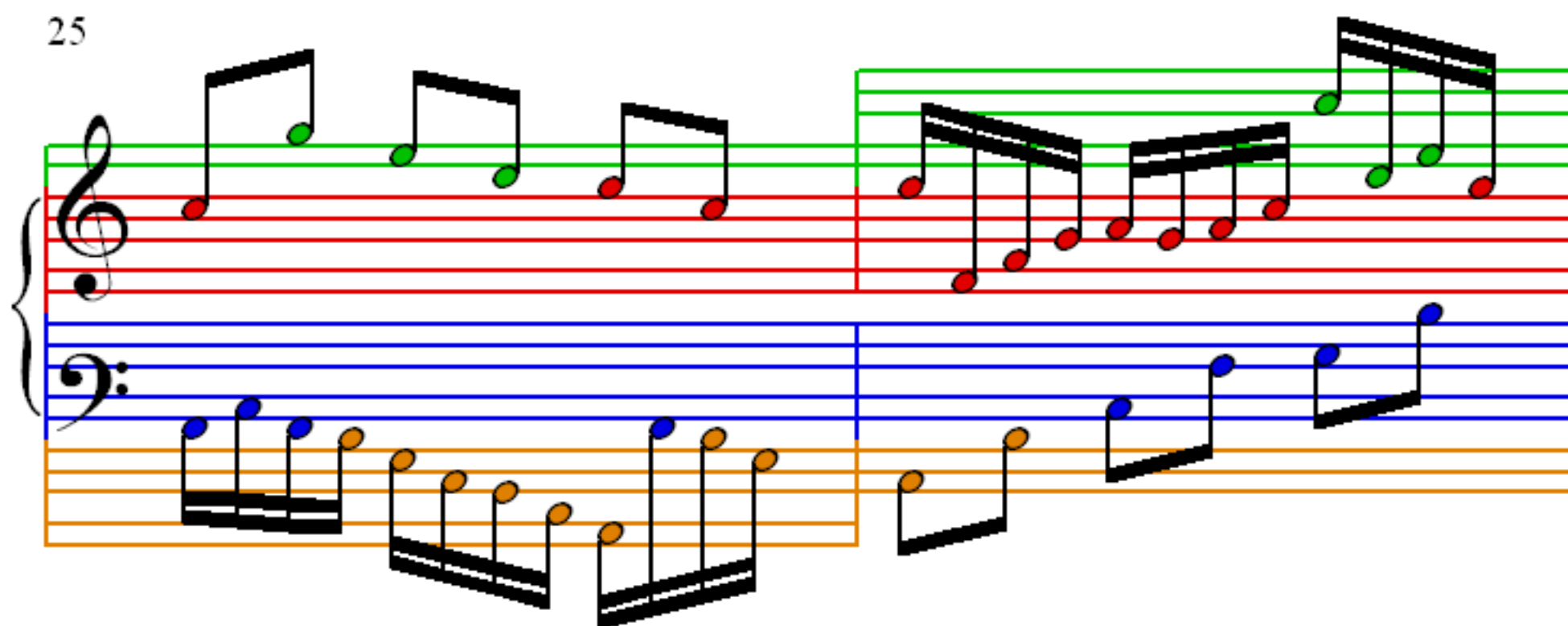
21

System 21: Treble clef (green notes), Bass clef (blue notes). The system contains two measures. The first measure has a treble staff with a series of eighth notes and a bass staff with a single blue note. The second measure has a treble staff with a series of eighth notes and a bass staff with a single blue note.

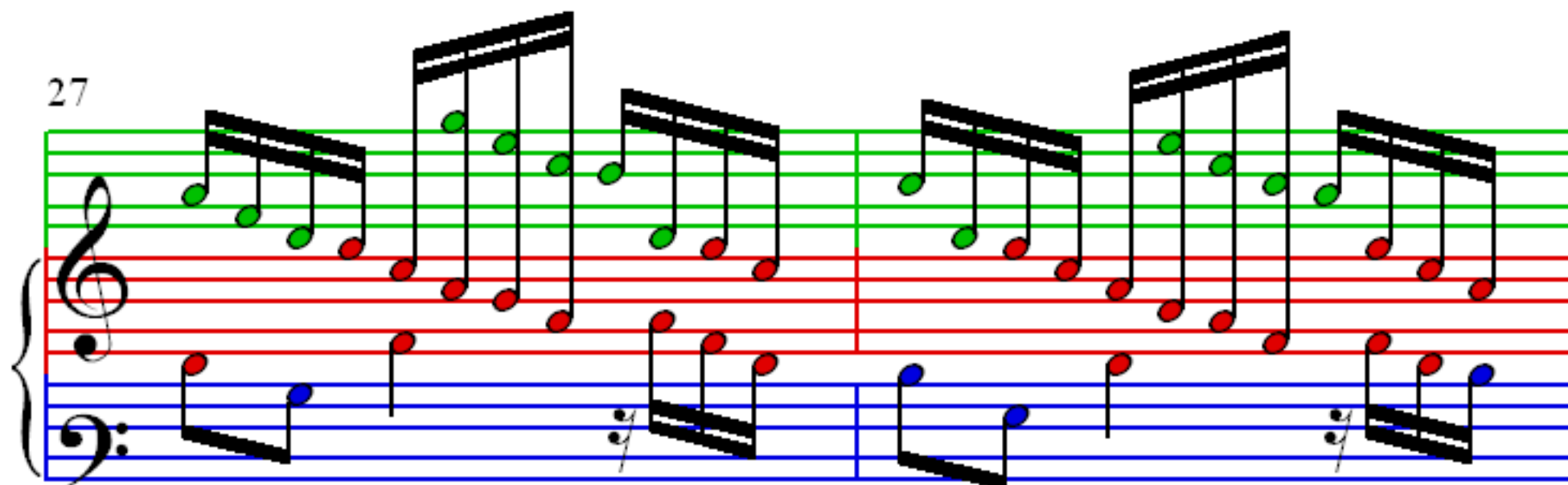
23

System 23: Treble clef (green notes), Bass clef (blue notes). The system contains two measures. The first measure has a treble staff with a series of eighth notes and a bass staff with a single blue note. The second measure has a treble staff with a series of eighth notes and a bass staff with a single blue note.

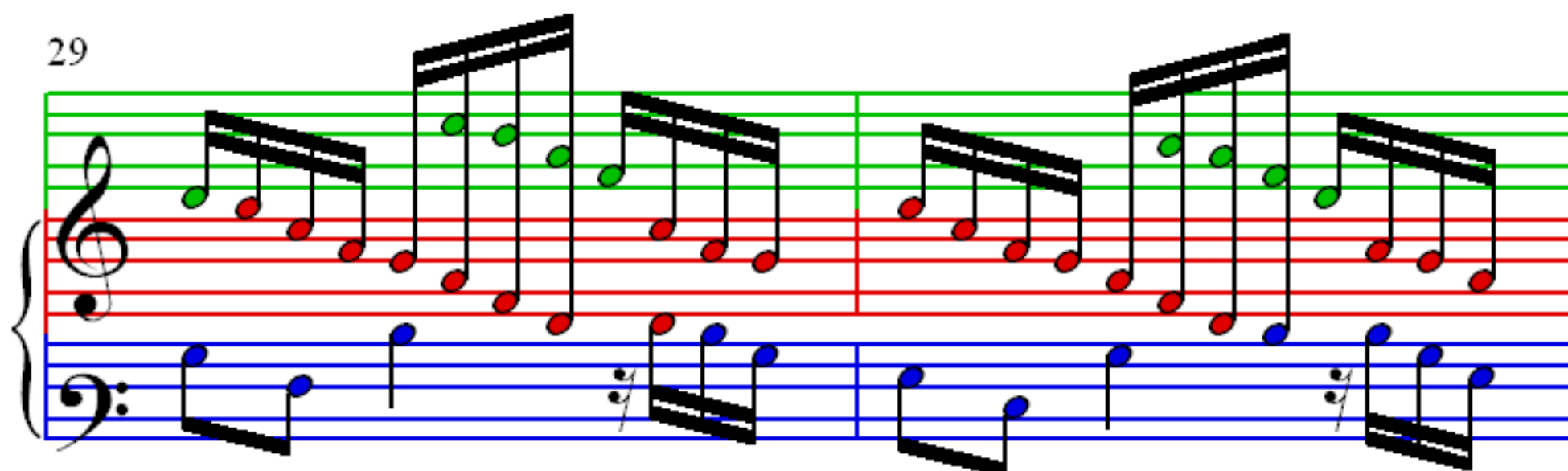
25



27



29



31

