

Sonatine

J. André (1741–1799)

$\text{♩} = 104$

Measures 1-3 of the Sonatine. The piece is in 2/2 time. The treble clef staff has a key signature of one sharp (F#) and a 2/2 time signature. The bass clef staff has a key signature of one flat (Bb). The notes are color-coded: red for the first staff, blue for the second, and orange for the third. The first measure contains a whole note G4 in the treble and a whole note Bb3 in the bass. The second measure contains a whole note A4 in the treble and a whole note C4 in the bass. The third measure contains a whole note B4 in the treble and a whole note D4 in the bass.

Measures 4-6 of the Sonatine. The treble clef staff has a key signature of one sharp (F#) and a 2/2 time signature. The bass clef staff has a key signature of one flat (Bb). The notes are color-coded: red for the first staff, blue for the second, and orange for the third. The fourth measure contains a whole note C5 in the treble and a whole note E4 in the bass. The fifth measure contains a whole note D5 in the treble and a whole note F4 in the bass. The sixth measure contains a whole note E5 in the treble and a whole note G4 in the bass.

Measures 7-9 of the Sonatine. The treble clef staff has a key signature of one sharp (F#) and a 2/2 time signature. The bass clef staff has a key signature of one flat (Bb). The notes are color-coded: red for the first staff, blue for the second, and orange for the third. The seventh measure contains a whole note F#5 in the treble and a whole note A4 in the bass. The eighth measure contains a whole note G#5 in the treble and a whole note B4 in the bass. The ninth measure contains a whole note A#5 in the treble and a whole note C5 in the bass.

Measures 10-12 of the Sonatine. The treble clef staff has a key signature of one sharp (F#) and a 2/2 time signature. The bass clef staff has a key signature of one flat (Bb). The notes are color-coded: red for the first staff, blue for the second, and orange for the third. The tenth measure contains a whole note B5 in the treble and a whole note D5 in the bass. The eleventh measure contains a whole note C6 in the treble and a whole note E5 in the bass. The twelfth measure contains a whole note D6 in the treble and a whole note F5 in the bass.

13

16

19

22

25

Measures 25-27. Treble clef: 25 (quarter, eighth, eighth, quarter), 26 (quarter, eighth, eighth, quarter), 27 (quarter, eighth, eighth, quarter). Bass clef: 25 (quarter, quarter, quarter, quarter), 26 (quarter, quarter, quarter, quarter), 27 (quarter, quarter, quarter, quarter). Measure 27 has a blue note in the bass.

28

Measures 28-30. Treble clef: 28 (quarter, eighth, eighth, quarter), 29 (quarter, eighth, eighth, quarter), 30 (quarter, eighth, eighth, quarter). Bass clef: 28 (quarter, quarter, quarter, quarter), 29 (quarter, quarter, quarter, quarter), 30 (quarter, quarter, quarter, quarter). Measure 30 has a blue note in the bass.

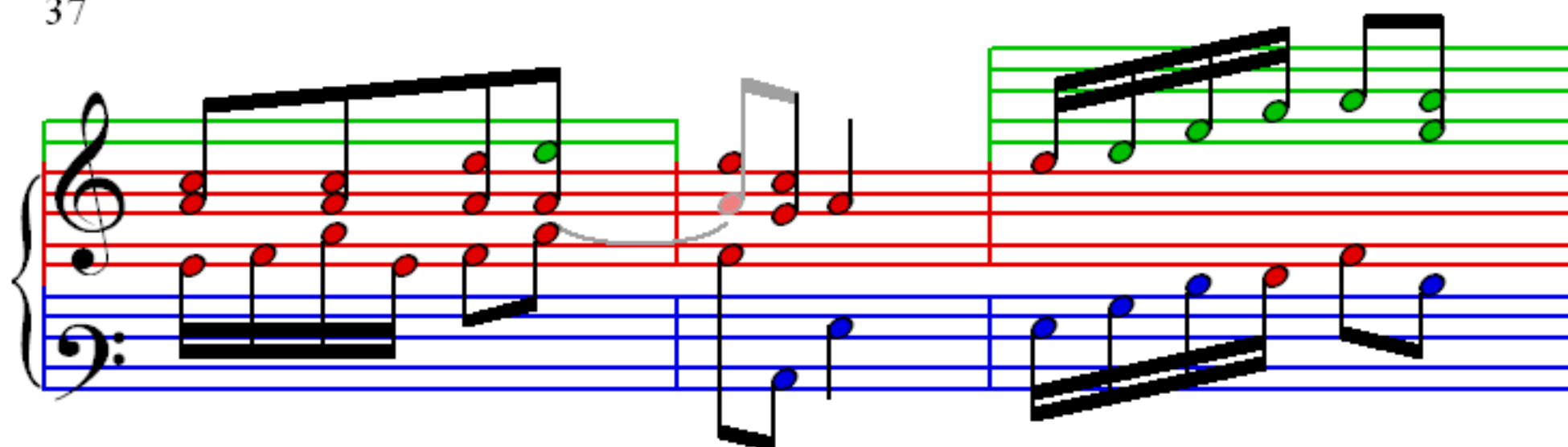
31

Measures 31-33. Treble clef: 31 (quarter, eighth, eighth, quarter), 32 (quarter, eighth, eighth, quarter), 33 (quarter, eighth, eighth, quarter). Bass clef: 31 (quarter, quarter, quarter, quarter), 32 (quarter, quarter, quarter, quarter), 33 (quarter, quarter, quarter, quarter). Measure 33 has a blue note in the bass.

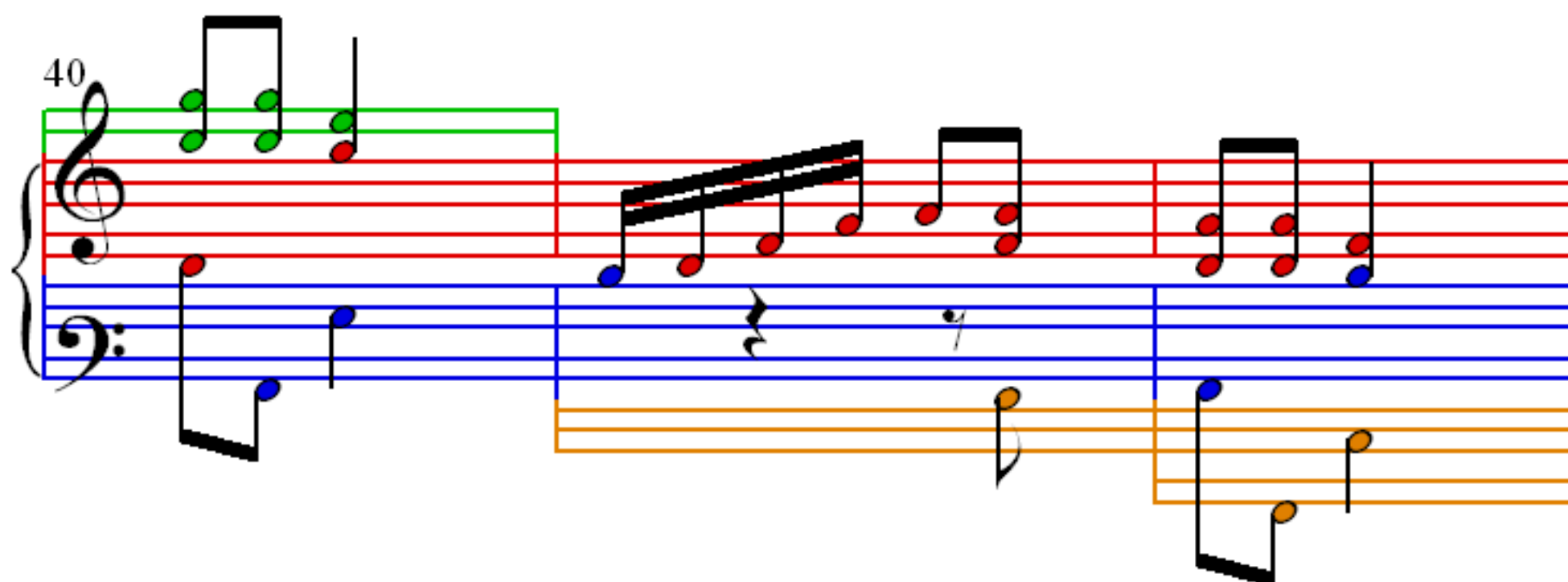
34

Measures 34-36. Treble clef: 34 (quarter, eighth, eighth, quarter), 35 (quarter, eighth, eighth, quarter), 36 (quarter, eighth, eighth, quarter). Bass clef: 34 (quarter, quarter, quarter, quarter), 35 (quarter, quarter, quarter, quarter), 36 (quarter, quarter, quarter, quarter). Measure 36 has a blue note in the bass.

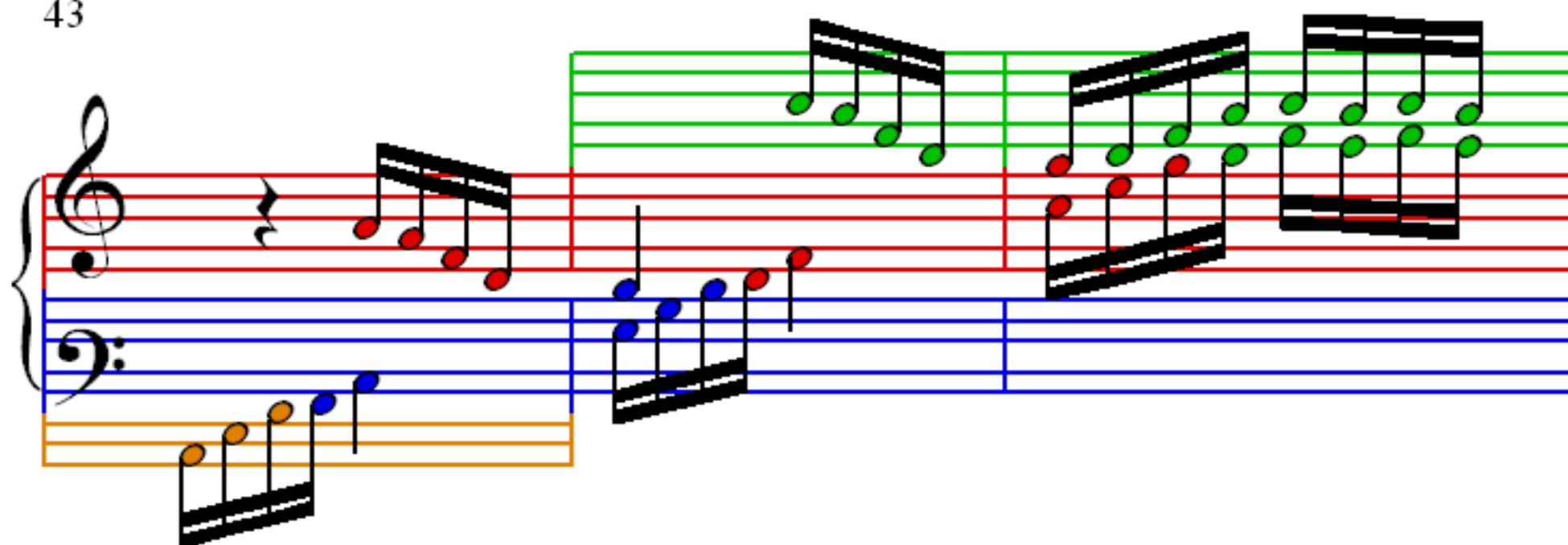
37



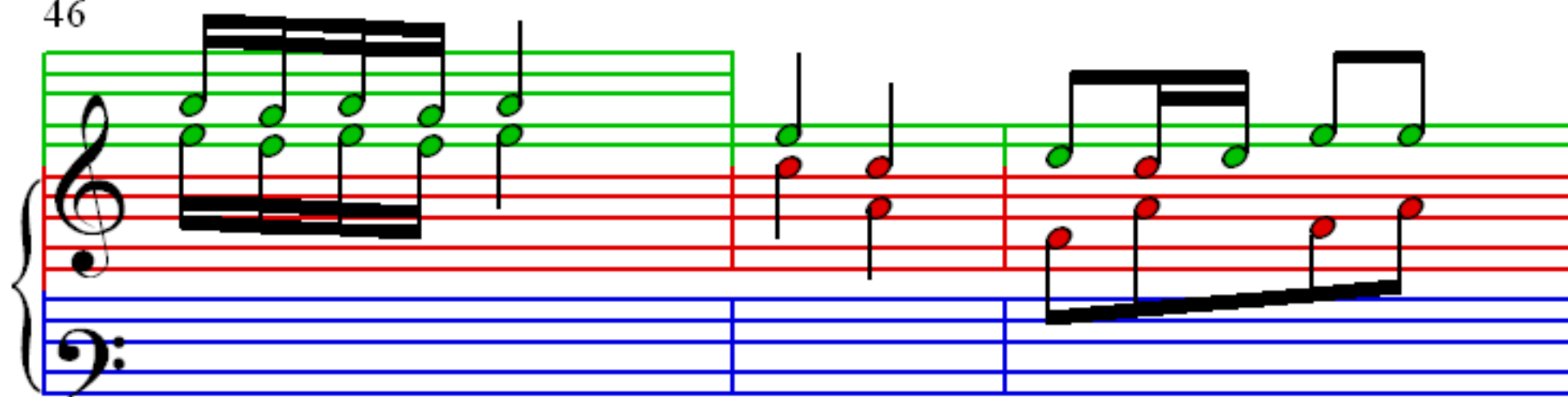
40



43



46



49

Measures 49-51. Treble clef: Measure 49 has eighth notes G4, A4, B4, C5 (green), eighth notes D5, E5, F5, G5 (red), eighth notes A5, B5, C6, D6 (green), eighth notes E6, F6, G6, A6 (red). Measure 50 has eighth notes B6, C7, D7, E7 (green), eighth notes F7, G7, A7, B7 (red), eighth notes C8, D8, E8, F8 (green), eighth notes G8, A8, B8, C9 (red). Measure 51 has eighth notes D9, E9, F9, G9 (green), eighth notes A9, B9, C10, D10 (red), eighth notes E10, F10, G10, A10 (green), eighth notes B10, C11, D11, E11 (red). Bass clef: Measure 49 has eighth notes C3, D3, E3, F3 (black), eighth notes G3, A3, B3, C4 (blue), eighth notes D4, E4, F4, G4 (black), eighth notes A4, B4, C5, D5 (blue). Measure 50 has eighth notes E5, F5, G5, A5 (black), eighth notes B5, C6, D6, E6 (blue), eighth notes F6, G6, A6, B6 (black), eighth notes C7, D7, E7, F7 (blue). Measure 51 has eighth notes G7, A7, B7, C8 (black), eighth notes D8, E8, F8, G8 (blue), eighth notes A8, B8, C9, D9 (black), eighth notes E9, F9, G9, A9 (blue). Measure 51 ends with a double bar line.

52

Measures 52-54. Treble clef: Measure 52 has eighth notes G4, A4, B4, C5 (green), eighth notes D5, E5, F5, G5 (red), eighth notes A5, B5, C6, D6 (green), eighth notes E6, F6, G6, A6 (red). Measure 53 has eighth notes B6, C7, D7, E7 (green), eighth notes F7, G7, A7, B7 (red), eighth notes C8, D8, E8, F8 (green), eighth notes G8, A8, B8, C9 (red). Measure 54 has eighth notes D9, E9, F9, G9 (green), eighth notes A9, B9, C10, D10 (red), eighth notes E10, F10, G10, A10 (green), eighth notes B10, C11, D11, E11 (red). Bass clef: Measure 52 has eighth notes C3, D3, E3, F3 (black), eighth notes G3, A3, B3, C4 (blue), eighth notes D4, E4, F4, G4 (black), eighth notes A4, B4, C5, D5 (blue). Measure 53 has eighth notes E5, F5, G5, A5 (black), eighth notes B5, C6, D6, E6 (blue), eighth notes F6, G6, A6, B6 (black), eighth notes C7, D7, E7, F7 (blue). Measure 54 has eighth notes G7, A7, B7, C8 (black), eighth notes D8, E8, F8, G8 (blue), eighth notes A8, B8, C9, D9 (black), eighth notes E9, F9, G9, A9 (blue). Measure 54 ends with a double bar line.

55

Measures 55-57. Treble clef: Measure 55 has eighth notes G4, A4, B4, C5 (green), eighth notes D5, E5, F5, G5 (red), eighth notes A5, B5, C6, D6 (green), eighth notes E6, F6, G6, A6 (red). Measure 56 has eighth notes B6, C7, D7, E7 (green), eighth notes F7, G7, A7, B7 (red), eighth notes C8, D8, E8, F8 (green), eighth notes G8, A8, B8, C9 (red). Measure 57 has eighth notes D9, E9, F9, G9 (green), eighth notes A9, B9, C10, D10 (red), eighth notes E10, F10, G10, A10 (green), eighth notes B10, C11, D11, E11 (red). Bass clef: Measure 55 has eighth notes C3, D3, E3, F3 (black), eighth notes G3, A3, B3, C4 (blue), eighth notes D4, E4, F4, G4 (black), eighth notes A4, B4, C5, D5 (blue). Measure 56 has eighth notes E5, F5, G5, A5 (black), eighth notes B5, C6, D6, E6 (blue), eighth notes F6, G6, A6, B6 (black), eighth notes C7, D7, E7, F7 (blue). Measure 57 has eighth notes G7, A7, B7, C8 (black), eighth notes D8, E8, F8, G8 (blue), eighth notes A8, B8, C9, D9 (black), eighth notes E9, F9, G9, A9 (blue). Measure 57 ends with a double bar line.

58

Measures 58-60. Treble clef: Measure 58 has eighth notes G4, A4, B4, C5 (green), eighth notes D5, E5, F5, G5 (red), eighth notes A5, B5, C6, D6 (green), eighth notes E6, F6, G6, A6 (red). Measure 59 has eighth notes B6, C7, D7, E7 (green), eighth notes F7, G7, A7, B7 (red), eighth notes C8, D8, E8, F8 (green), eighth notes G8, A8, B8, C9 (red). Measure 60 has eighth notes D9, E9, F9, G9 (green), eighth notes A9, B9, C10, D10 (red), eighth notes E10, F10, G10, A10 (green), eighth notes B10, C11, D11, E11 (red). Bass clef: Measure 58 has eighth notes C3, D3, E3, F3 (black), eighth notes G3, A3, B3, C4 (blue), eighth notes D4, E4, F4, G4 (black), eighth notes A4, B4, C5, D5 (blue). Measure 59 has eighth notes E5, F5, G5, A5 (black), eighth notes B5, C6, D6, E6 (blue), eighth notes F6, G6, A6, B6 (black), eighth notes C7, D7, E7, F7 (blue). Measure 60 has eighth notes G7, A7, B7, C8 (black), eighth notes D8, E8, F8, G8 (blue), eighth notes A8, B8, C9, D9 (black), eighth notes E9, F9, G9, A9 (blue). Measure 60 ends with a double bar line.