

Clock

T H Clark

♩ = 100

1

Measures 1-4 of the piece. The treble clef staff has a key signature of two flats (Bb, Eb) and a 2/4 time signature. The bass clef staff has a key signature of two flats (Bb, Eb). The music is written in a simplified notation style with colored dots (red, blue, orange, green) and fingerings (1-5). Measure 1 starts with a treble staff rest and a bass staff note on G2 (orange dot, finger 5). Measure 2 has a treble staff triplet of D4 (red), E4 (red), F4 (red) and a bass staff triplet of G3 (blue), A3 (blue), B3 (blue). Measure 3 has a treble staff triplet of G4 (red), A4 (red), B4 (red) and a bass staff triplet of C4 (blue), D4 (blue), E4 (blue). Measure 4 has a treble staff triplet of C5 (red), D5 (red), E5 (red) and a bass staff triplet of F4 (blue), G4 (blue), A4 (blue).

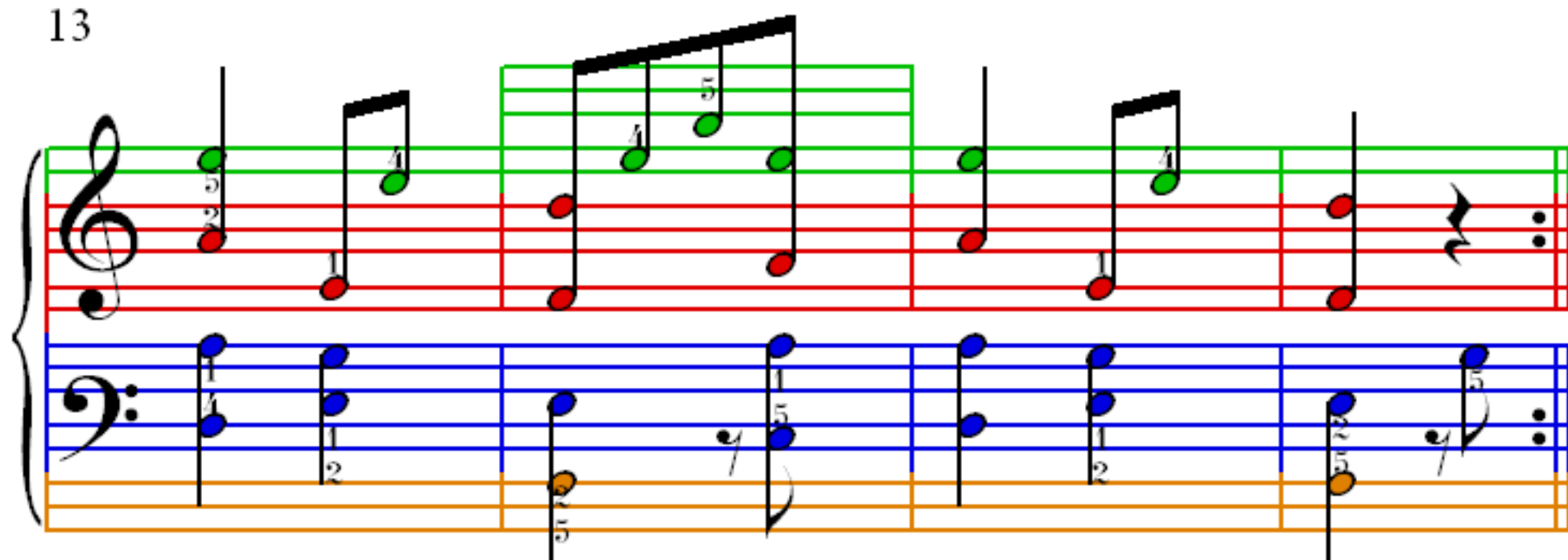
5

Measures 5-8 of the piece. Measure 5 has a treble staff triplet of D4 (red), E4 (red), F4 (red) and a bass staff triplet of G3 (blue), A3 (blue), B3 (blue). Measure 6 has a treble staff triplet of G4 (red), A4 (red), B4 (red) and a bass staff triplet of C4 (blue), D4 (blue), E4 (blue). Measure 7 has a treble staff triplet of C5 (red), D5 (red), E5 (red) and a bass staff triplet of F4 (blue), G4 (blue), A4 (blue). Measure 8 has a treble staff triplet of D5 (red), E5 (red), F5 (red) and a bass staff triplet of G4 (blue), A4 (blue), B4 (blue).

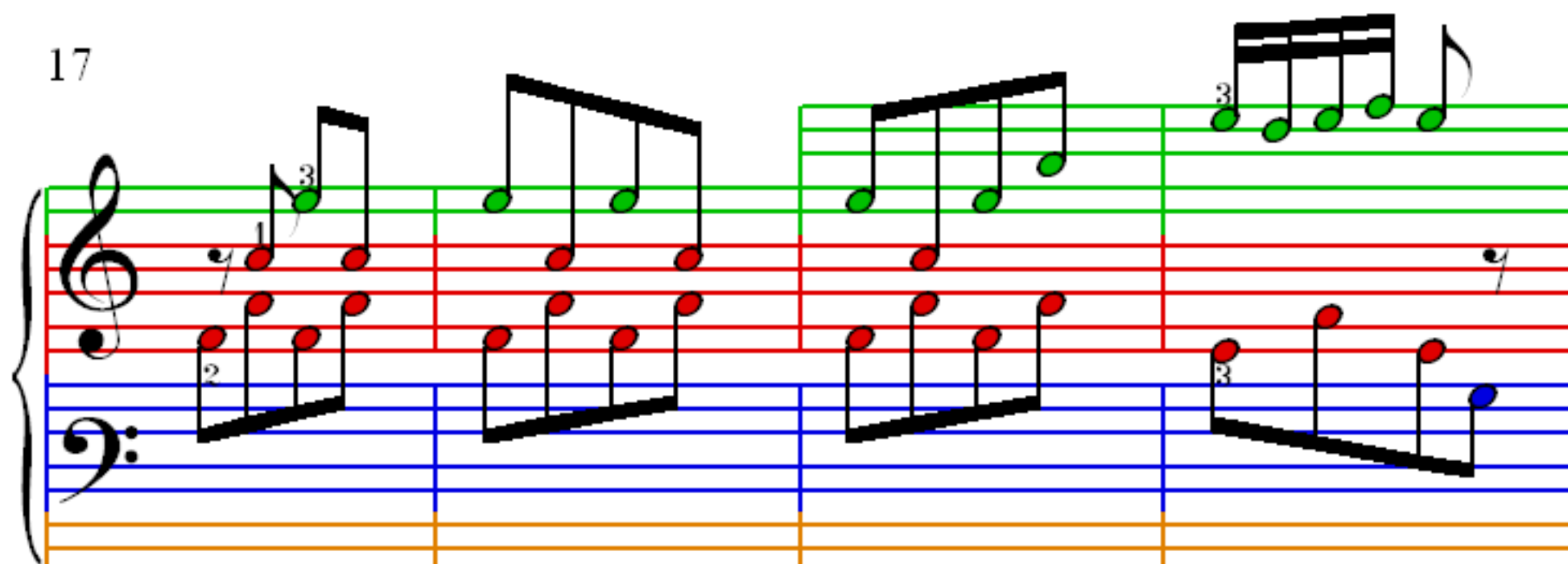
9

Measures 9-12 of the piece. Measure 9 has a treble staff triplet of G4 (green), A4 (green), B4 (green) and a bass staff triplet of C4 (blue), D4 (blue), E4 (blue). Measure 10 has a treble staff triplet of D5 (green), E5 (green), F5 (green) and a bass staff triplet of G4 (blue), A4 (blue), B4 (blue). Measure 11 has a treble staff triplet of G5 (green), A5 (green), B5 (green) and a bass staff triplet of C5 (blue), D5 (blue), E5 (blue). Measure 12 has a treble staff triplet of A5 (green), B5 (green), C6 (green) and a bass staff triplet of D5 (blue), E5 (blue), F5 (blue).

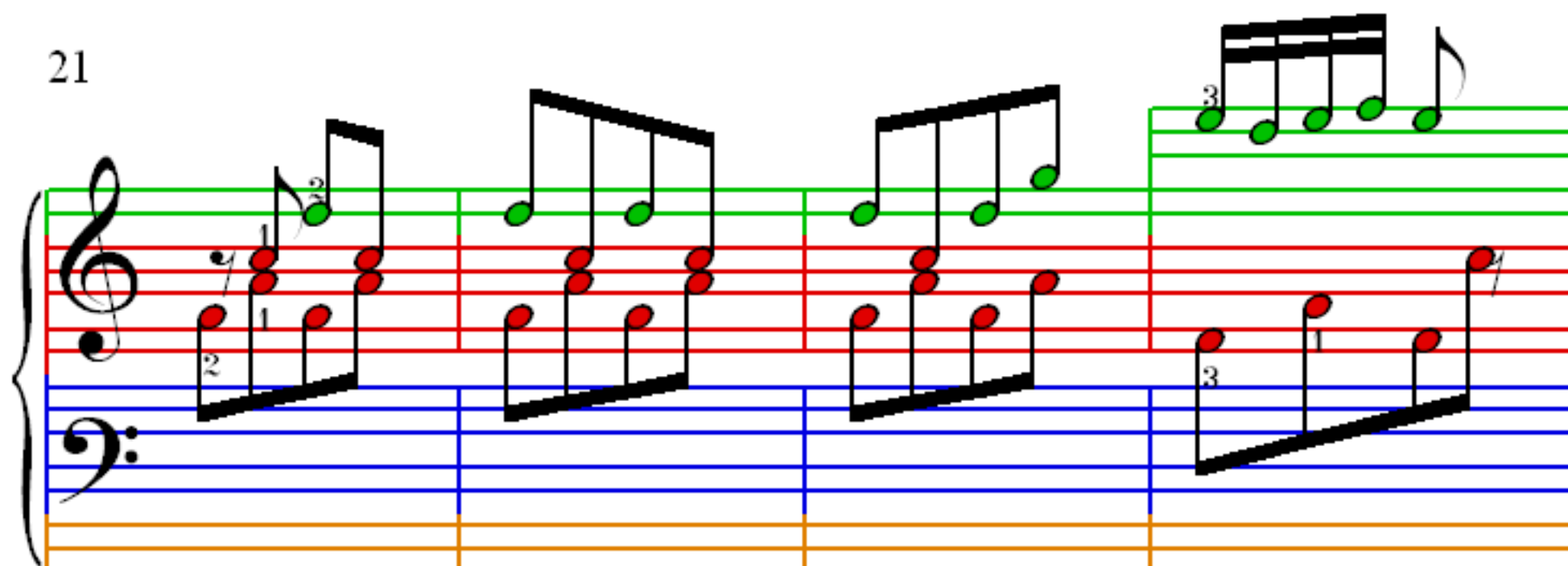
13



17



21



25

Measures 25-28. Treble clef: Measure 25 (G4, A4, B4, C5), Measure 26 (D5, C5, B4, A4), Measure 27 (G4, F4, E4, D4), Measure 28 (C4, B3, A3, G3). Bass clef: Measure 25 (F3, E3, D3, C3), Measure 26 (B2, A2, G2, F2), Measure 27 (E2, D2, C2, B1), Measure 28 (A1, G1, F1, E1). Fingerings: Treble (25: 1, 2, 3, 5; 26: 3, 2, 1, 3; 27: 2, 1, 2, 3; 28: 3, 2, 1, 3). Bass (25: 2, 1, 3, 2; 26: 2, 1, 2, 3; 27: 2, 1, 2, 3; 28: 2, 1, 2, 3).

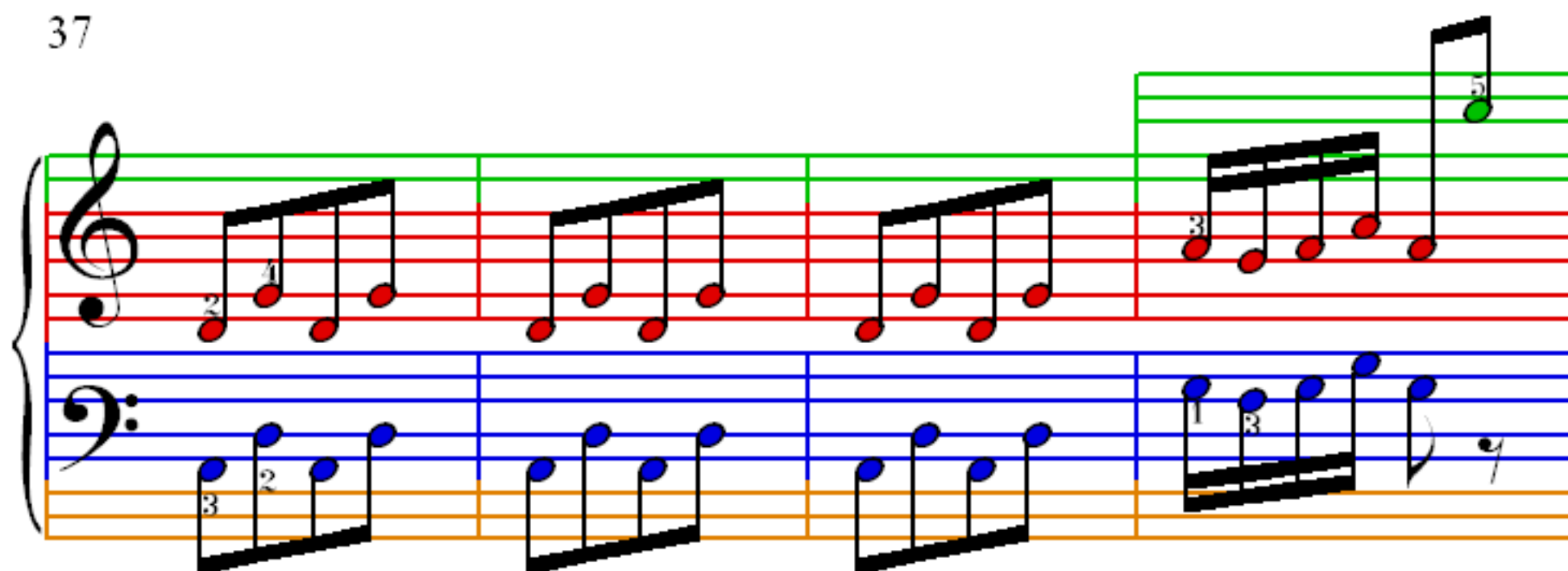
29

Measures 29-32. Treble clef: Measure 29 (G4, A4, B4, C5), Measure 30 (D5, C5, B4, A4), Measure 31 (G4, F4, E4, D4), Measure 32 (C4, B3, A3, G3). Bass clef: Measure 29 (F3, E3, D3, C3), Measure 30 (B2, A2, G2, F2), Measure 31 (E2, D2, C2, B1), Measure 32 (A1, G1, F1, E1). Measure 33 (G3, F3, E3, D3). Fingerings: Treble (29: 3, 2, 1, 2; 30: 3, 2, 1, 2; 31: 3, 2, 1, 2; 32: 3, 2, 1, 2). Bass (29: 2, 1, 3, 2; 30: 2, 1, 2, 3; 31: 2, 1, 2, 3; 32: 2, 1, 2, 3; 33: 1, 2, 3, 4).

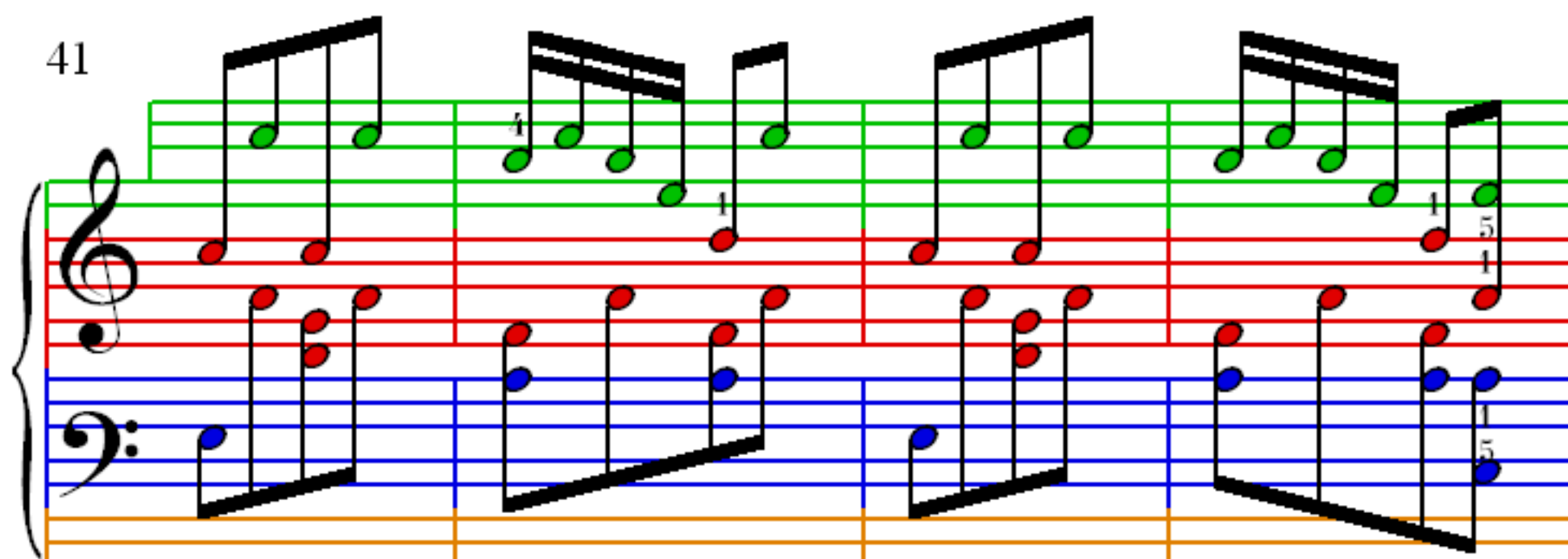
33

Measures 33-36. Treble clef: Measure 33 (G4, A4, B4, C5), Measure 34 (D5, C5, B4, A4), Measure 35 (G4, F4, E4, D4), Measure 36 (C4, B3, A3, G3). Bass clef: Measure 33 (F3, E3, D3, C3), Measure 34 (B2, A2, G2, F2), Measure 35 (E2, D2, C2, B1), Measure 36 (A1, G1, F1, E1). Fingerings: Treble (33: 2, 1, 3, 2; 34: 2, 1, 2, 3; 35: 2, 1, 2, 3; 36: 2, 1, 2, 3). Bass (33: 1, 2, 3, 4; 34: 1, 2, 3, 4; 35: 1, 2, 3, 4; 36: 1, 2, 3, 4).

37



41



45

