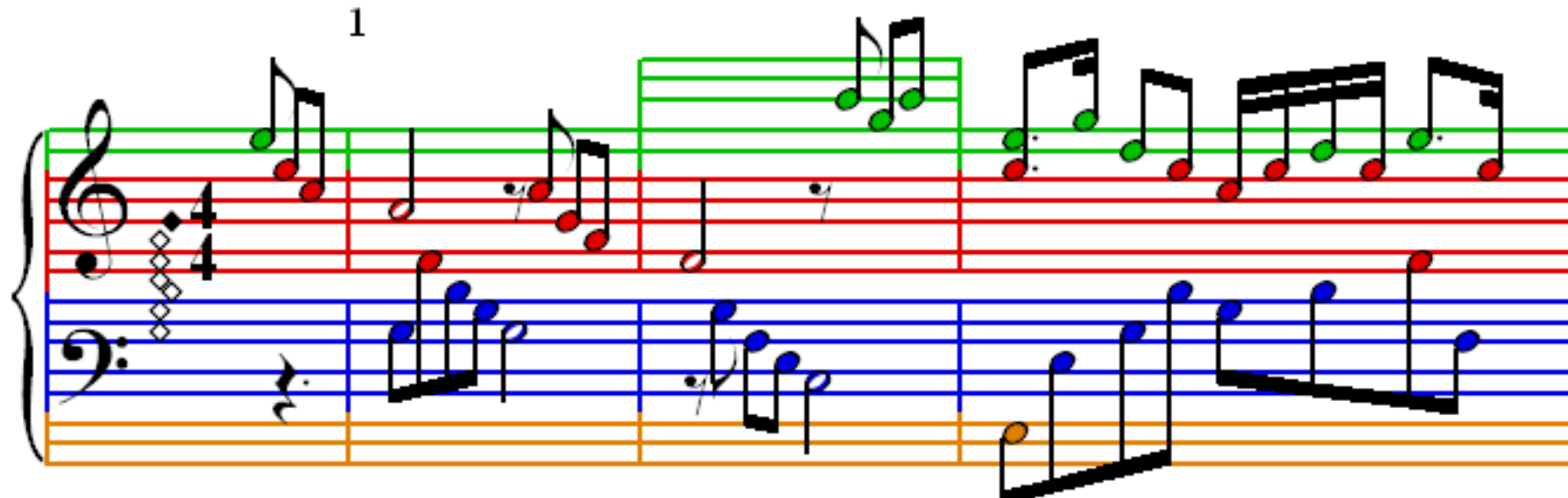


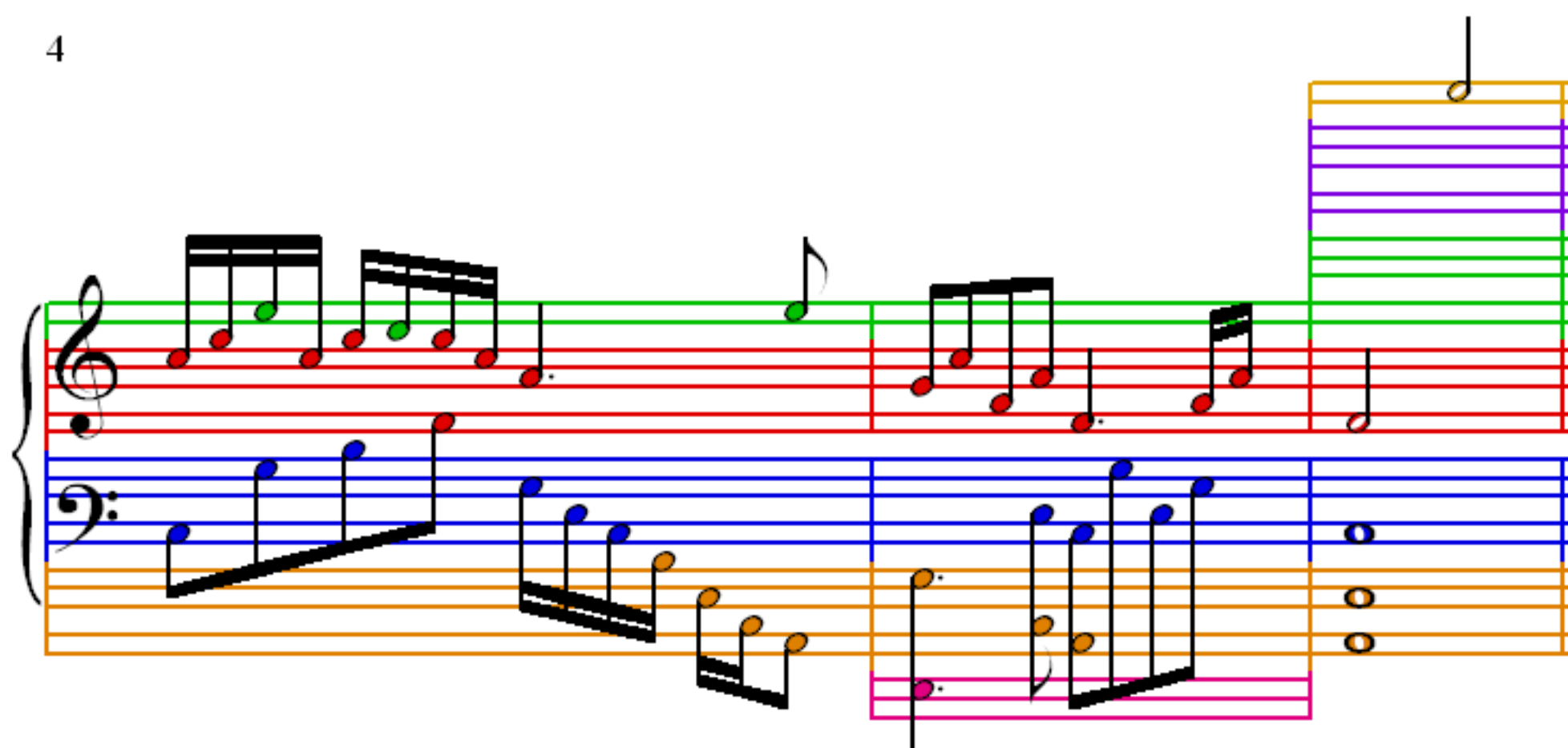
# Liang Shan-bo and Zhu Ying-tai

Chen Gang And He Zhan-hao

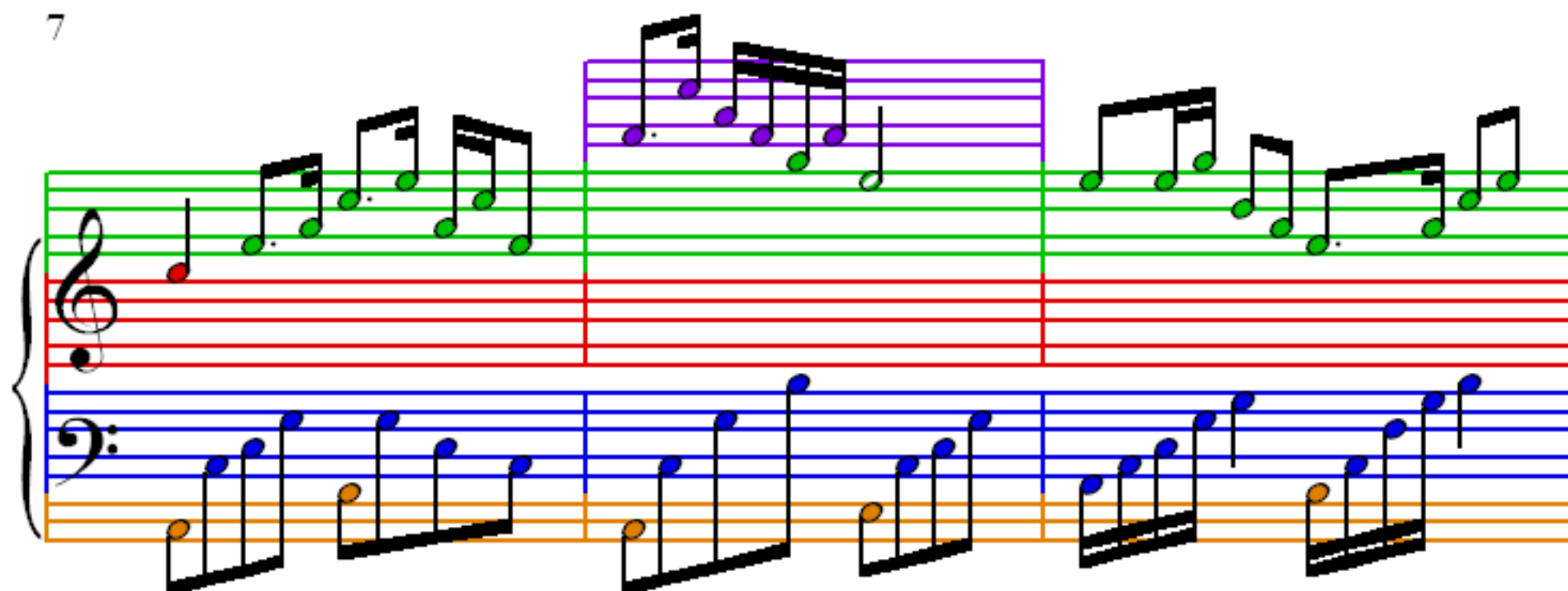
1



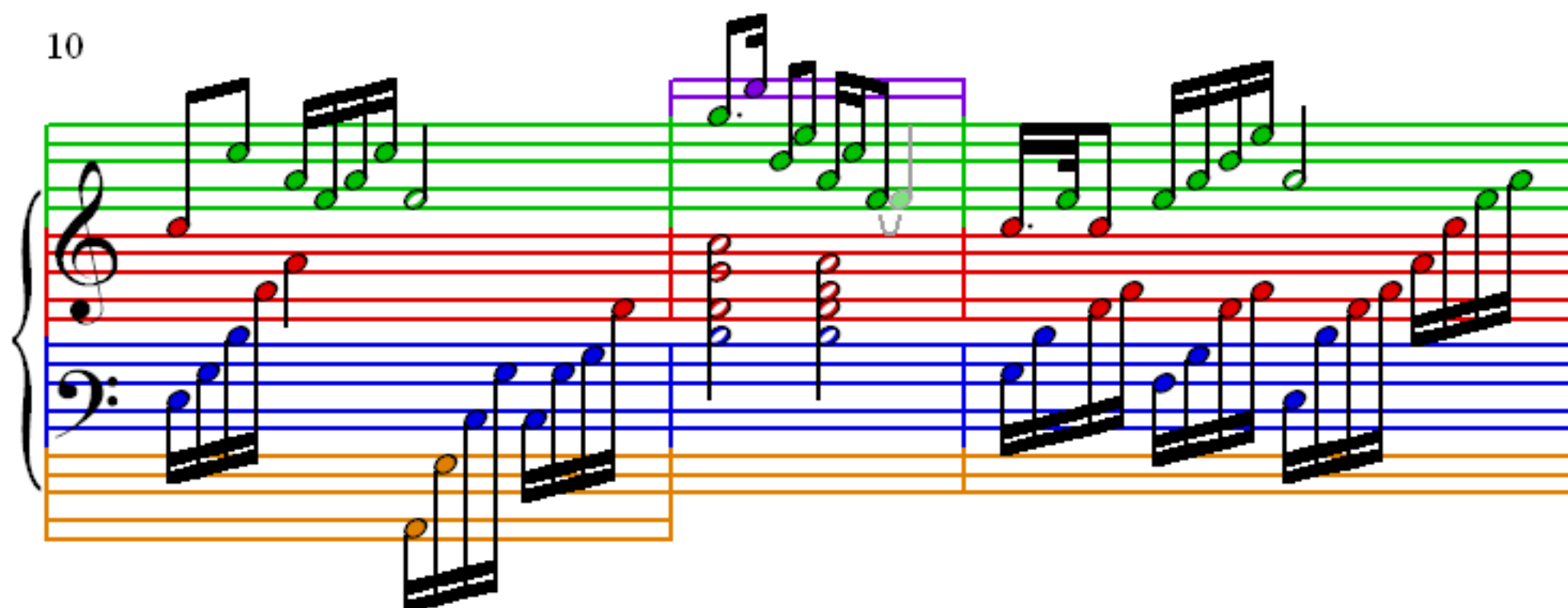
4



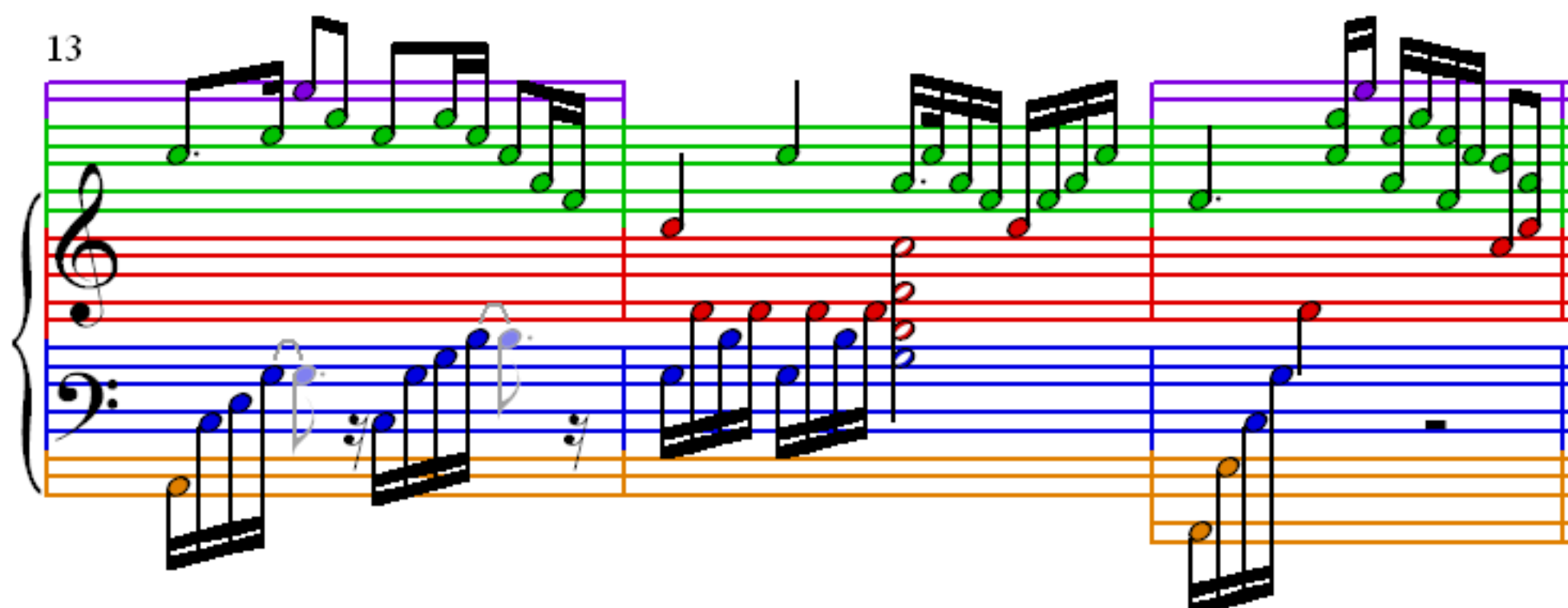
7



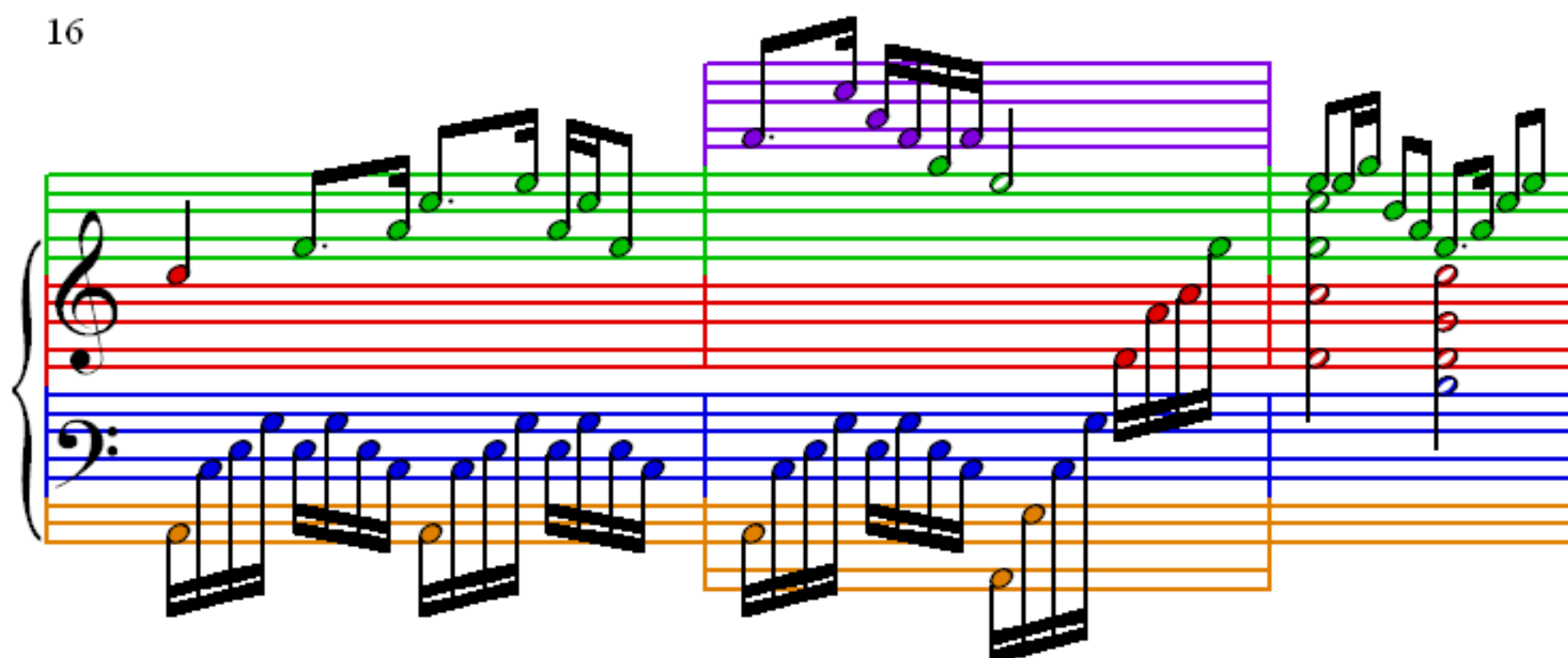
10



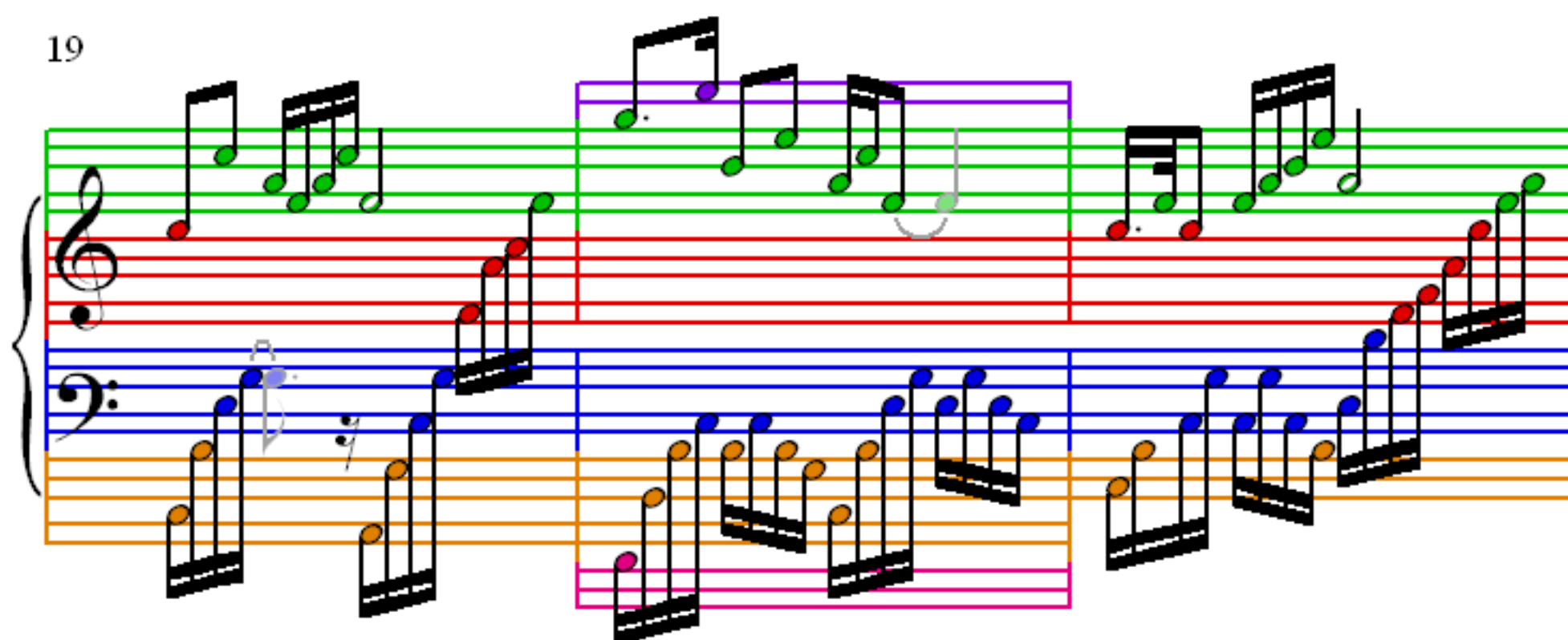
13



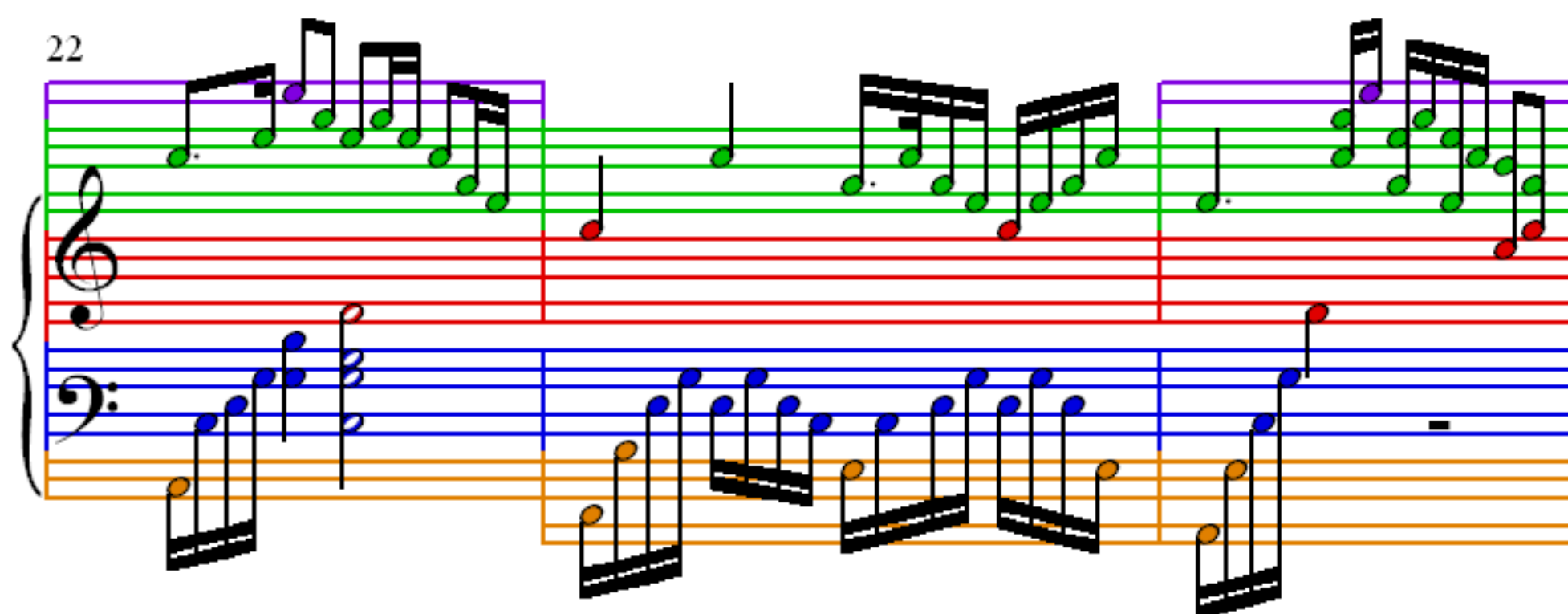
16



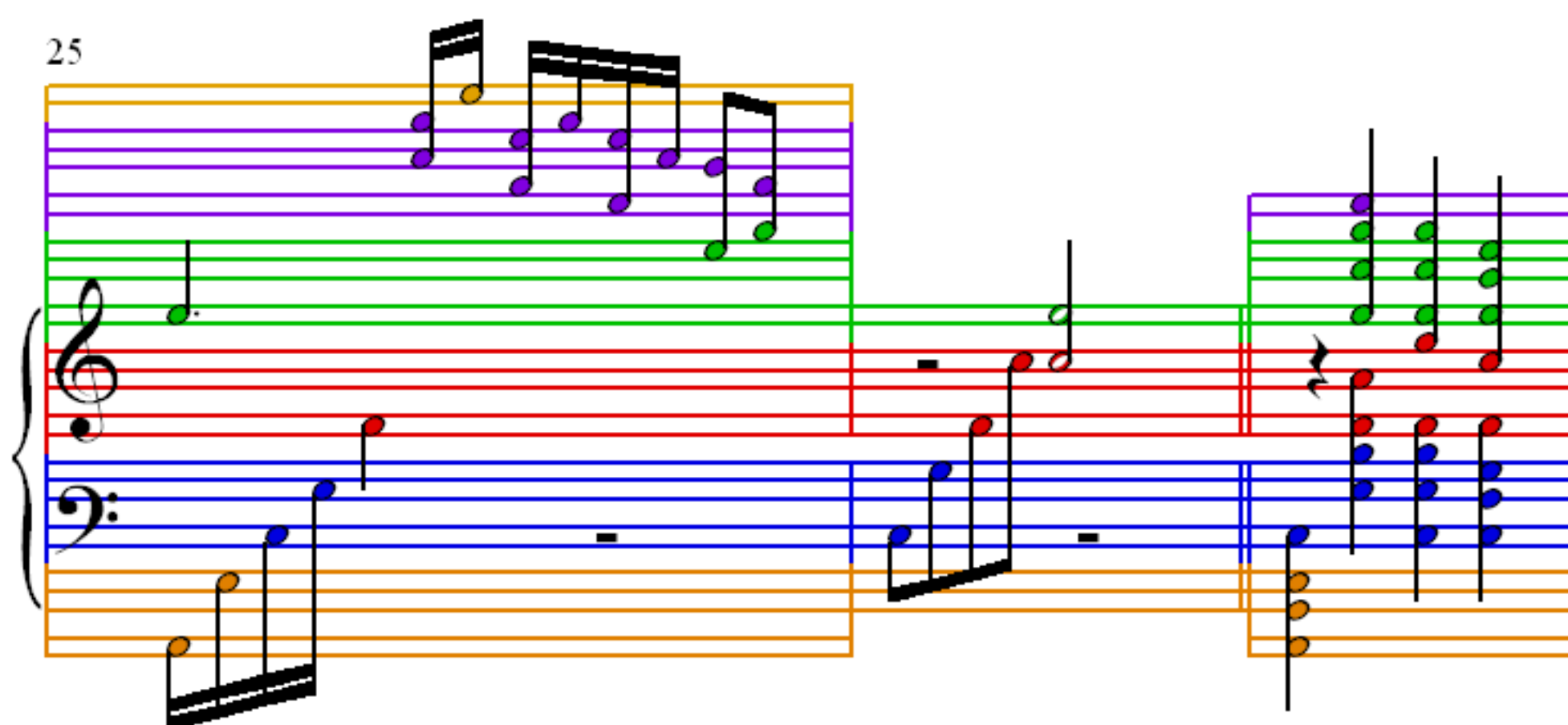
19



22



25



28

Measures 28-30 of a musical score. The score is written for a grand staff with treble and bass clefs. The treble staff has a purple staff line above it. The bass staff has a blue staff line above it. The music is in 4/4 time. Measure 28 features a treble staff with a half note G4 and a bass staff with a half note F3. Measure 29 features a treble staff with a half note G4 and a bass staff with a half note F3. Measure 30 features a treble staff with a half note G4 and a bass staff with a half note F3.

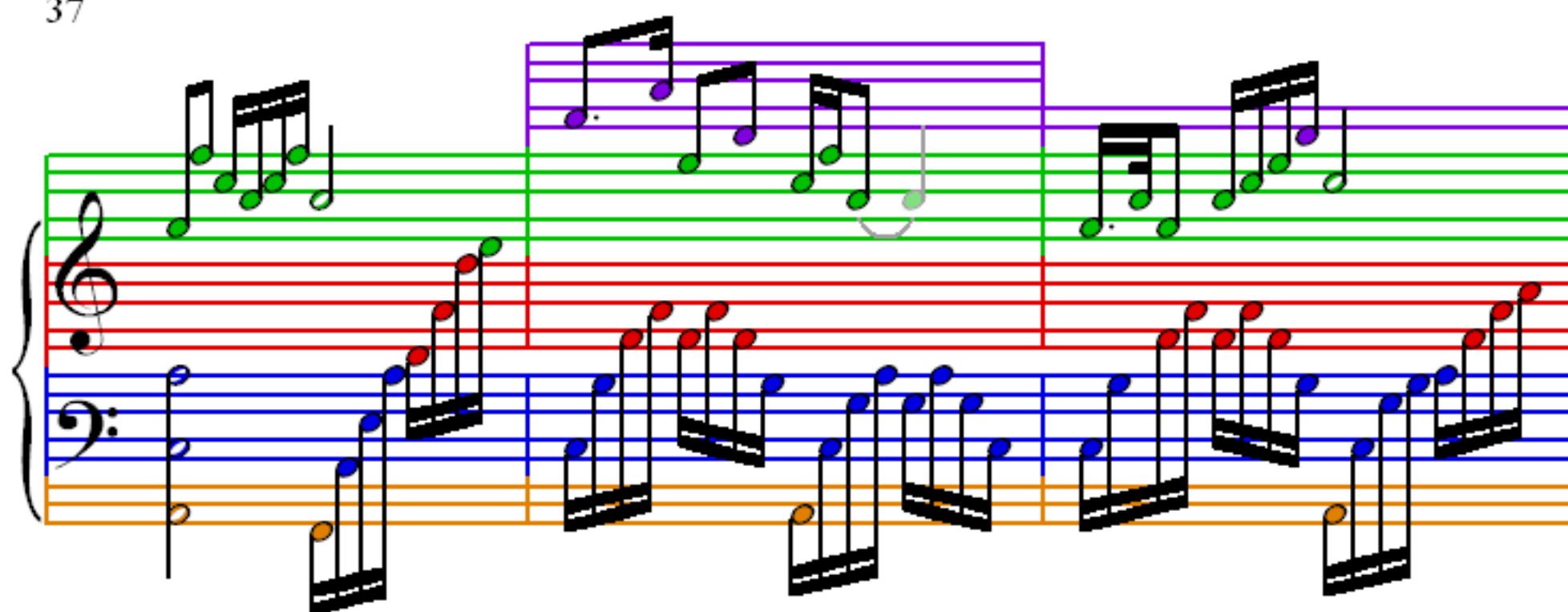
31

Measures 31-33 of a musical score. The score is written for a grand staff with treble and bass clefs. The treble staff has a purple staff line above it. The bass staff has a blue staff line above it. The music is in 4/4 time. Measure 31 features a treble staff with a half note G4 and a bass staff with a half note F3. Measure 32 features a treble staff with a half note G4 and a bass staff with a half note F3. Measure 33 features a treble staff with a half note G4 and a bass staff with a half note F3.

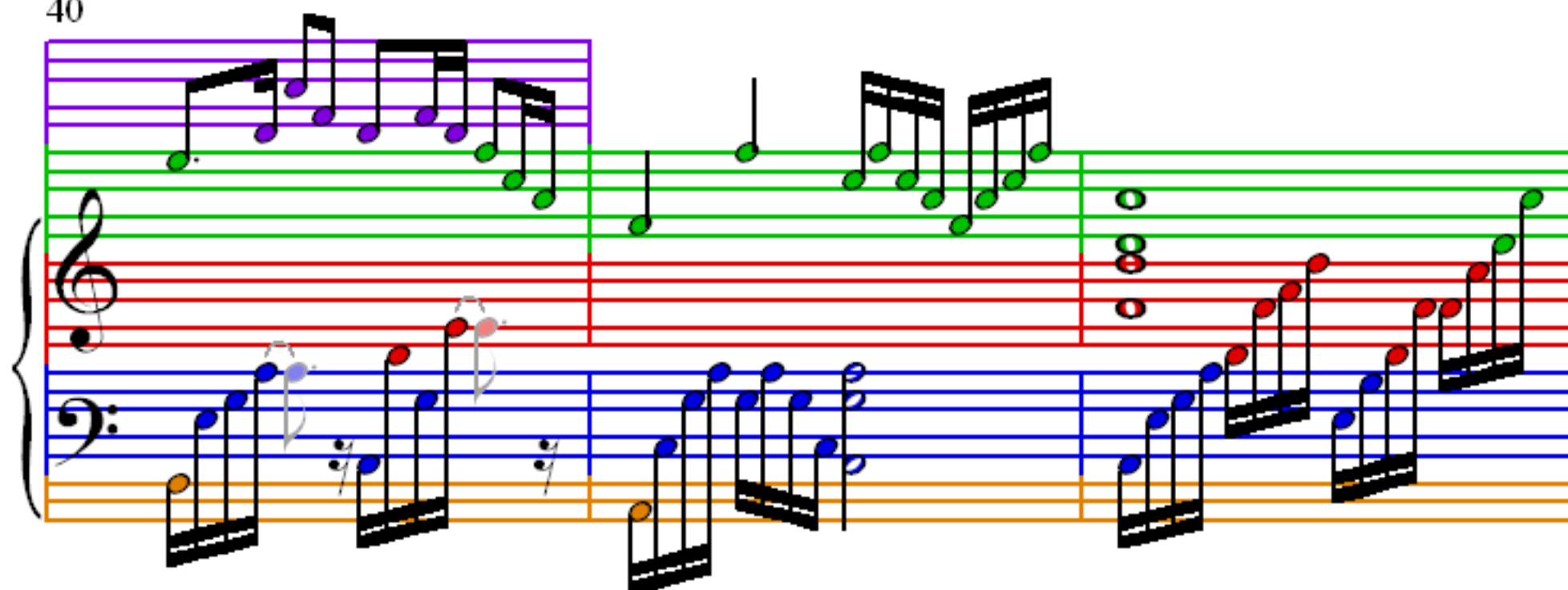
34

Measures 34-36 of a musical score. The score is written for a grand staff with treble and bass clefs. The treble staff has a purple staff line above it. The bass staff has a blue staff line above it. The music is in 4/4 time. Measure 34 features a treble staff with a half note G4 and a bass staff with a half note F3. Measure 35 features a treble staff with a half note G4 and a bass staff with a half note F3. Measure 36 features a treble staff with a half note G4 and a bass staff with a half note F3.

37



40



43

