

# Yesterday

Beatles

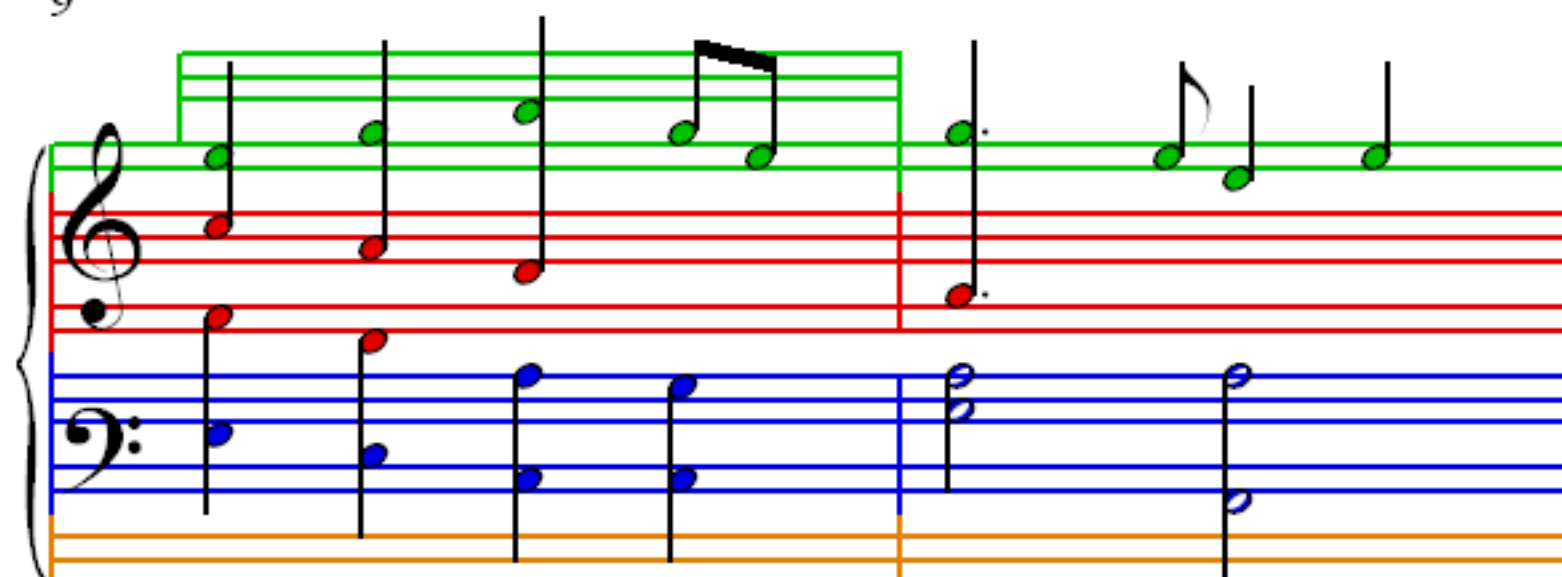
1  
♩ = 90

Measures 1 and 2 of the piano introduction. The key signature is one flat (B-flat major or D minor). The time signature is 4/4. The melody in the treble clef starts on a whole note G4, followed by a half note F#4, and a half note E4. In measure 2, it continues with a half note D4, a half note C4, and a half note B3, all tied to the next measure. The bass line consists of a whole note chord of G2 and B2 in measure 1, and a whole note chord of F#2 and E2 in measure 2. The staves are color-coded: green for the treble clef, red for the bass clef, blue for the bass line, and orange for the grand staff frame.

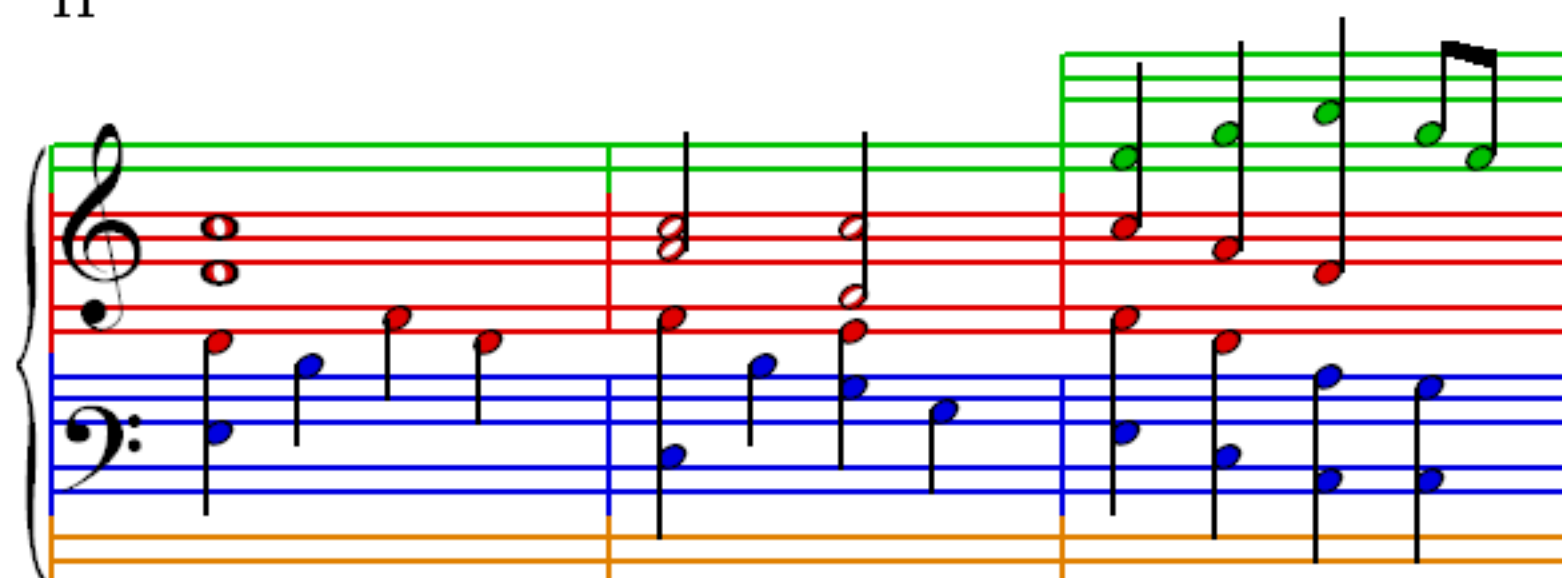
Measures 3 and 4. The melody in measure 3 continues with a half note A3, a half note G3, and a half note F#3, all tied to the next measure. In measure 4, it continues with a half note E3, a half note D3, and a half note C3, all tied to the next measure. The bass line consists of a whole note chord of G2 and B2 in measure 3, and a whole note chord of F#2 and E2 in measure 4. The staves are color-coded: green for the treble clef, red for the bass clef, blue for the bass line, and orange for the grand staff frame.

Measures 5 and 6. The melody in measure 5 continues with a half note B3, a half note A3, and a half note G3, all tied to the next measure. In measure 6, it continues with a half note F#3, a half note E3, and a half note D3, all tied to the next measure. The bass line consists of a whole note chord of G2 and B2 in measure 5, and a whole note chord of F#2 and E2 in measure 6. The staves are color-coded: green for the treble clef, red for the bass clef, blue for the bass line, and orange for the grand staff frame.

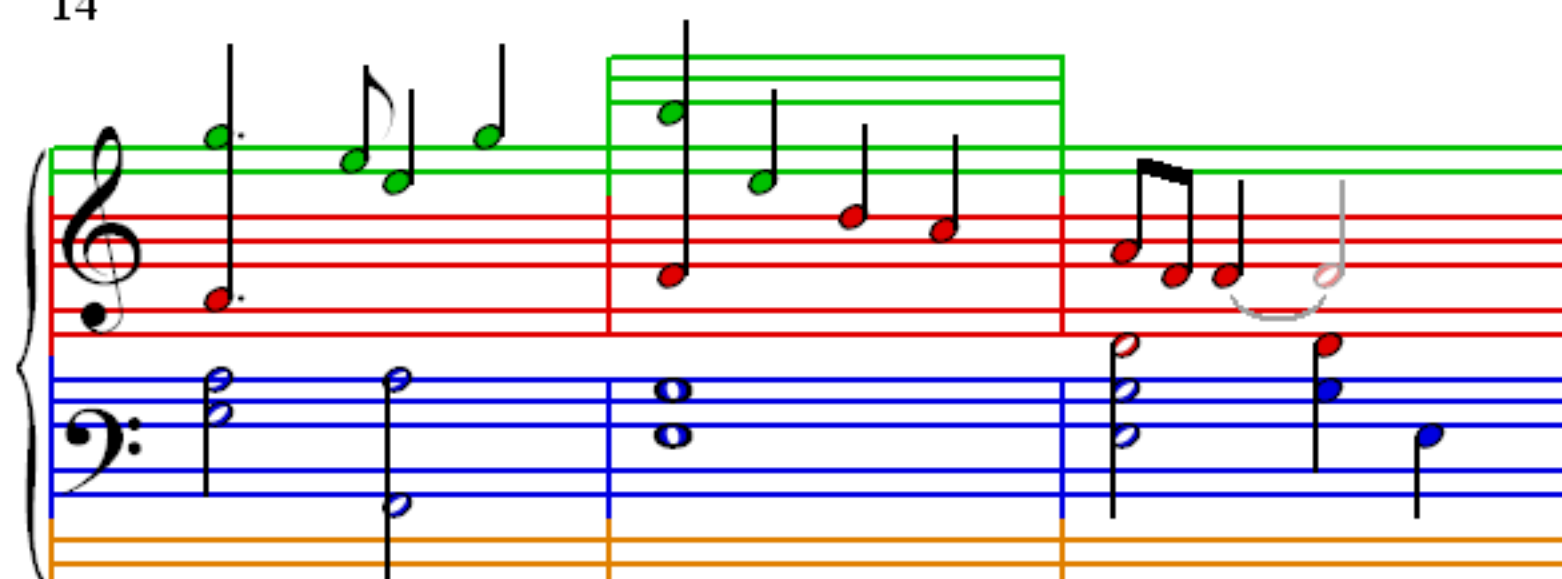
9



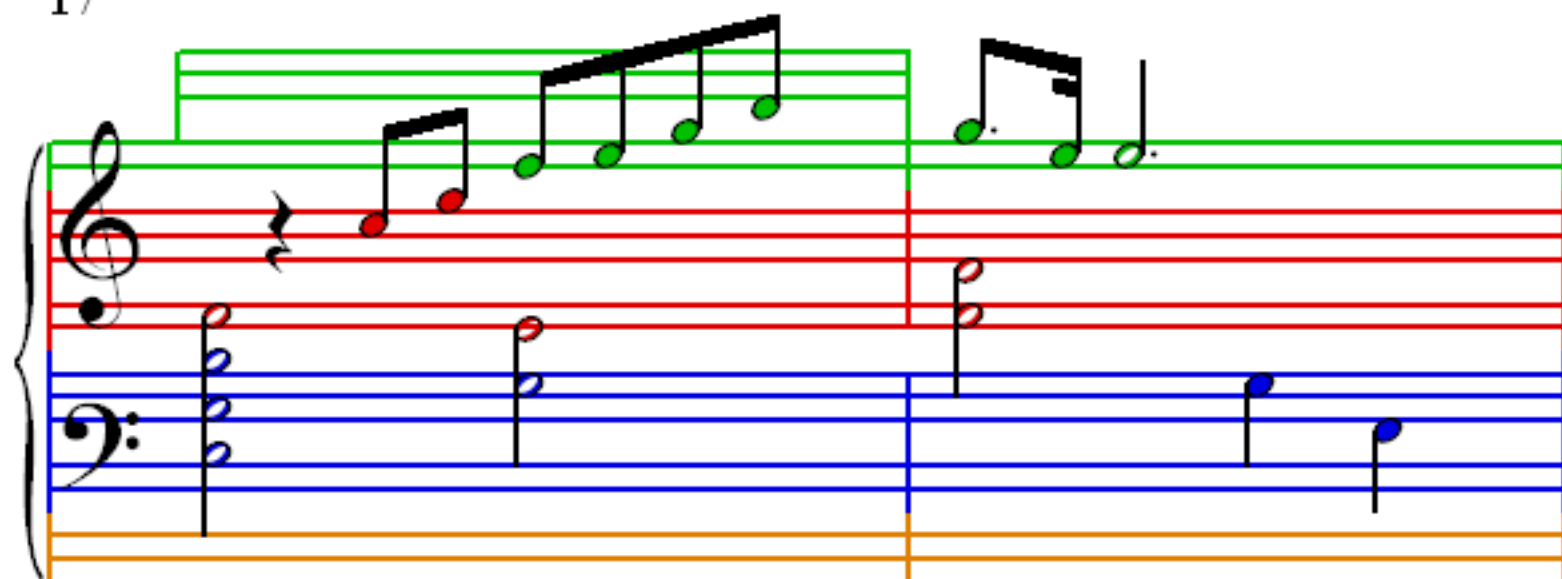
11



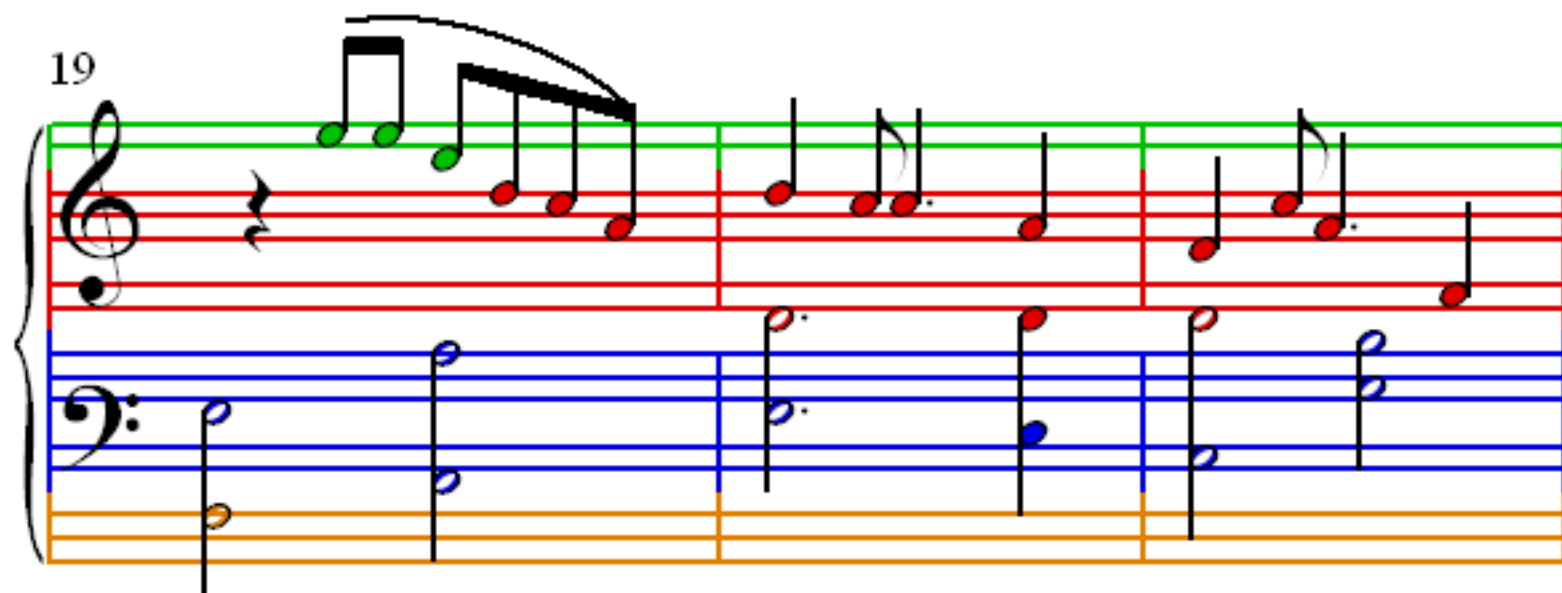
14



17



19



22

