

Maple Leaf Rag

Scott Joplin

♩ = 280

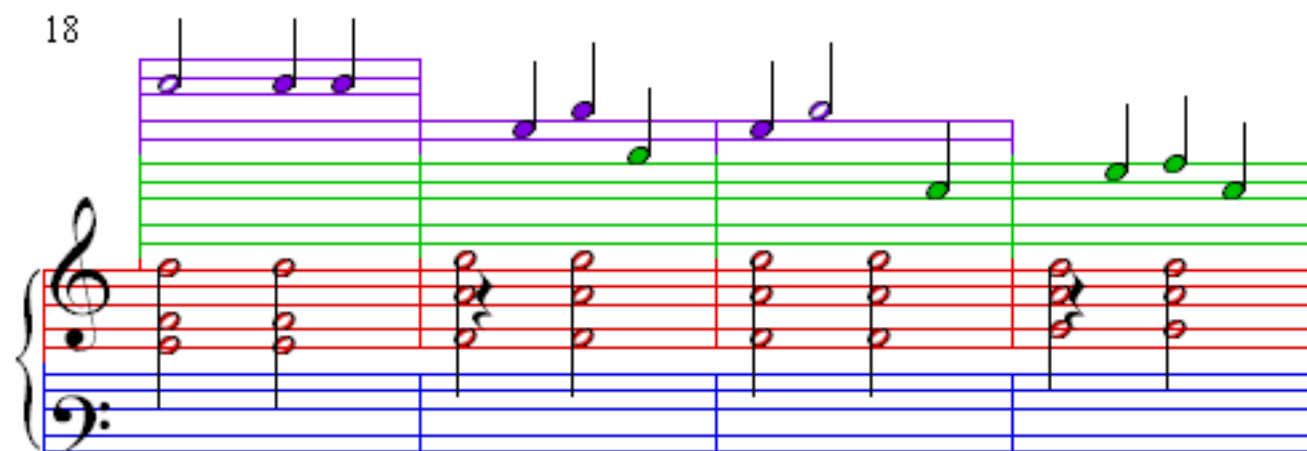
The image displays the first 14 measures of the piano introduction to 'Maple Leaf Rag' by Scott Joplin. The music is written in 4/4 time with a tempo of 280 beats per minute. The score is presented in four systems, each with a grand staff (treble and bass clefs). The first three systems (measures 1-10) feature a treble staff with a green staff line and a bass staff with a blue staff line. The fourth system (measures 11-14) features a treble staff with a purple staff line and a bass staff with a blue staff line. The melody in the treble staff is primarily composed of eighth and sixteenth notes, with some rests. The bass staff provides a steady accompaniment of eighth notes. The key signature is one flat (B-flat major or D minor). The notation includes various musical symbols such as notes, rests, and bar lines.

6

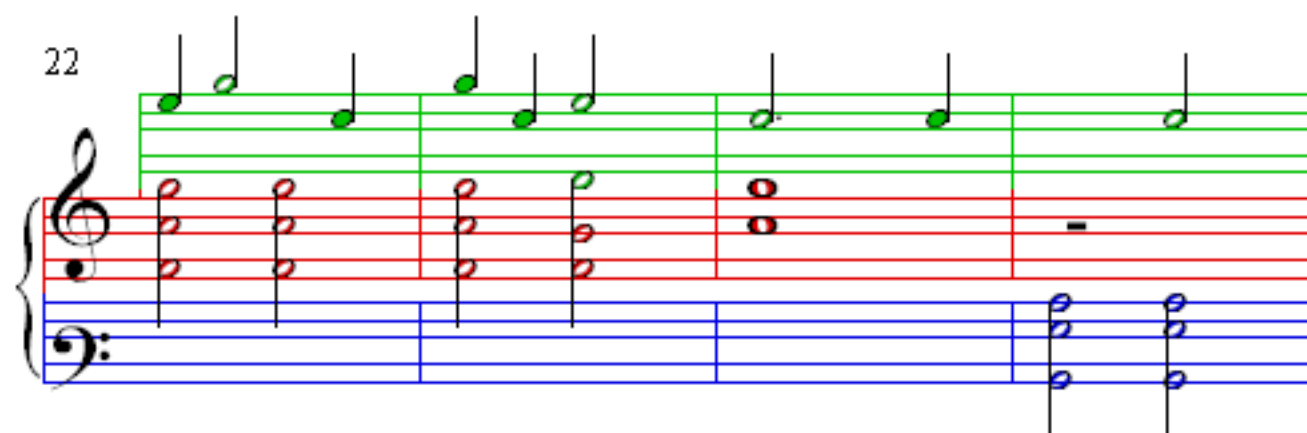
10

14

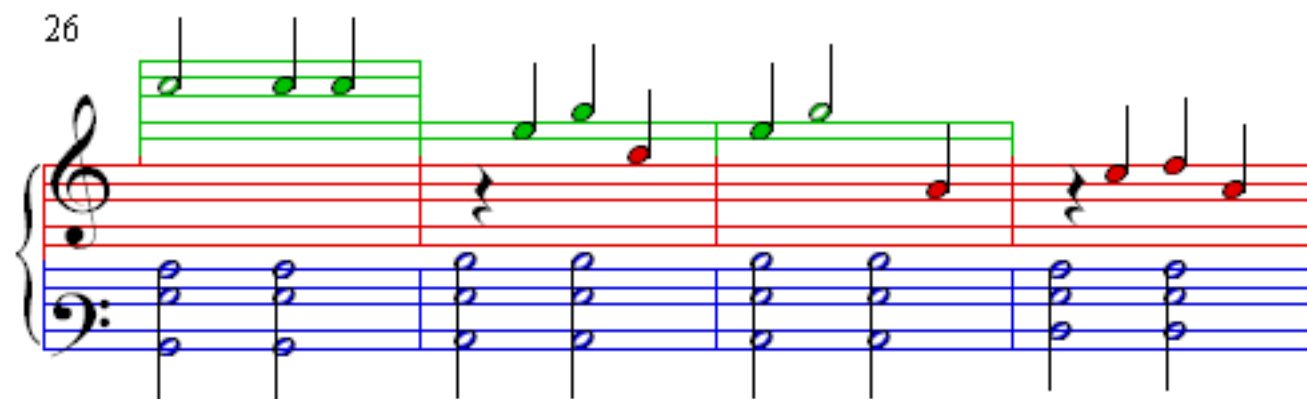
18



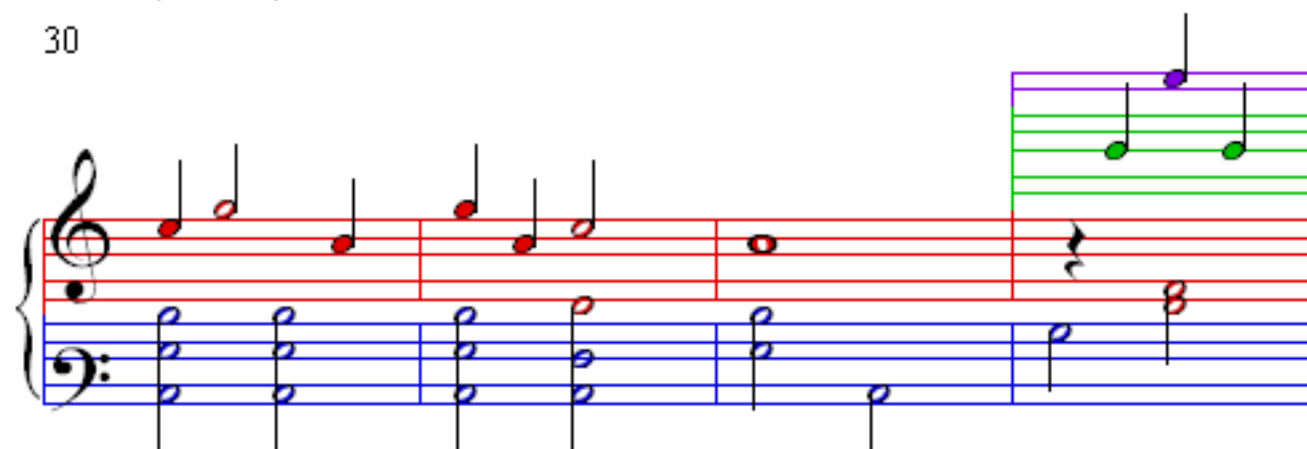
22



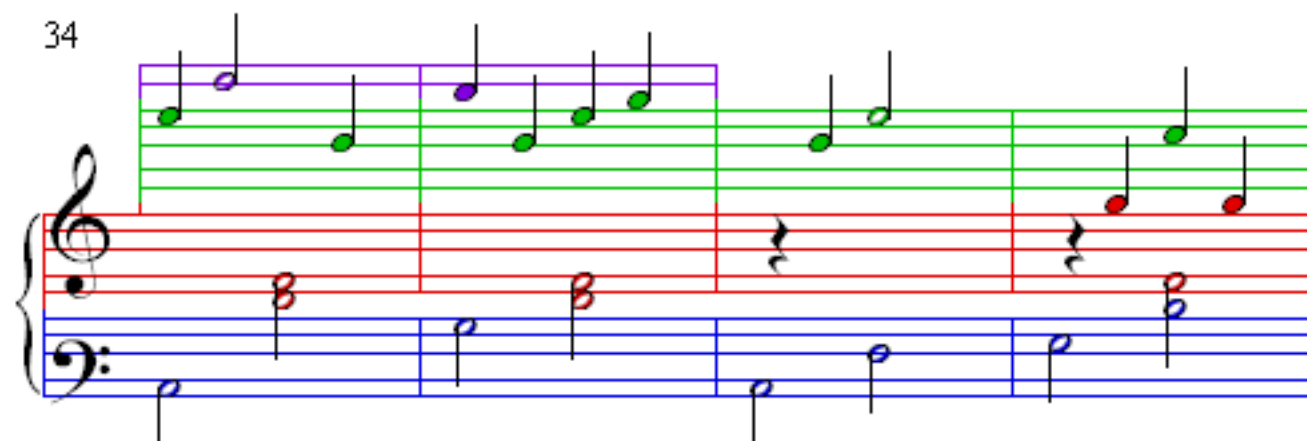
26



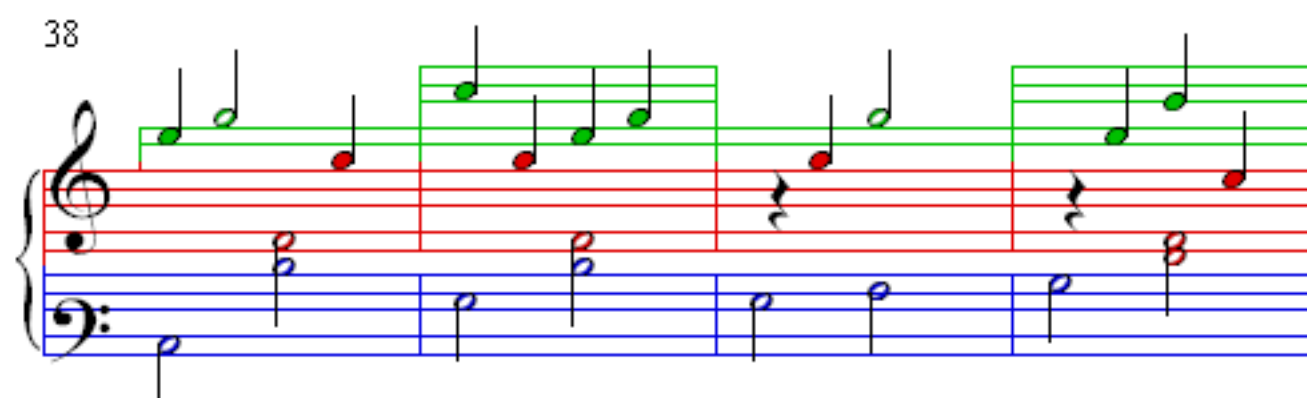
30



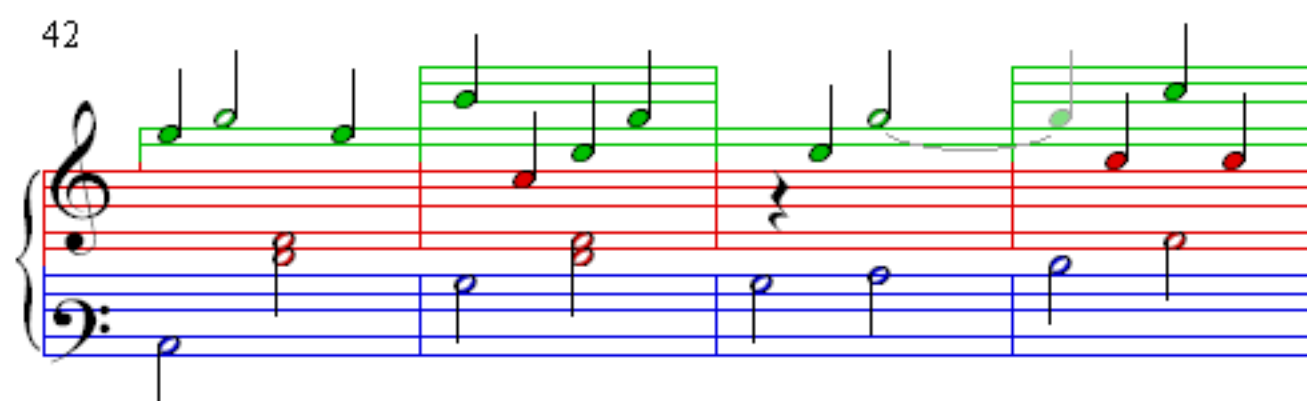
34



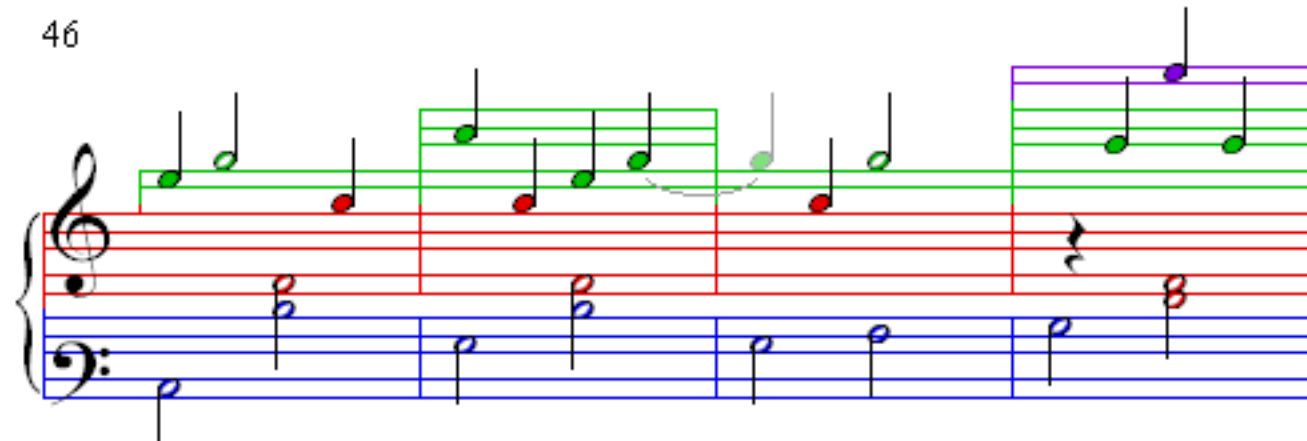
38



42



46



50

Measures 50-53 of the Maple Leaf Rag. The right hand (treble clef) features a melody of eighth notes, with measures 50-51 highlighted in green and measures 52-53 in red. The left hand (bass clef) provides a harmonic accompaniment with chords and single notes, colored blue. Measure 52 includes a whole rest in the right hand.

54

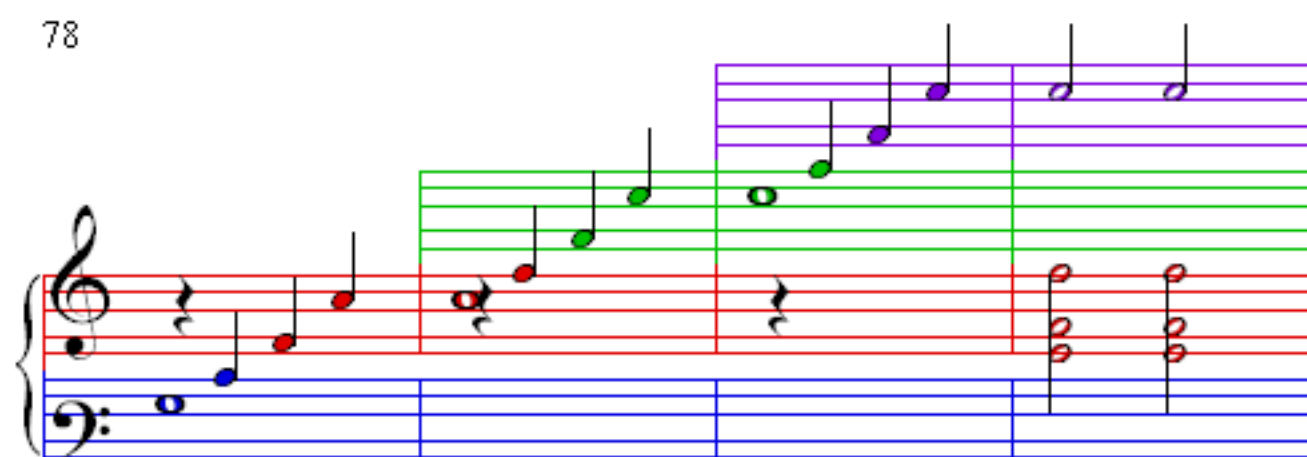
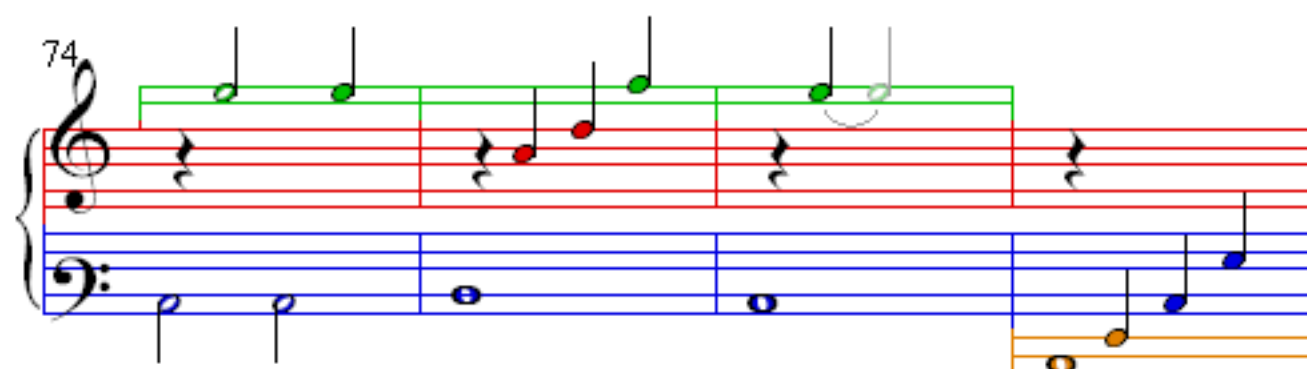
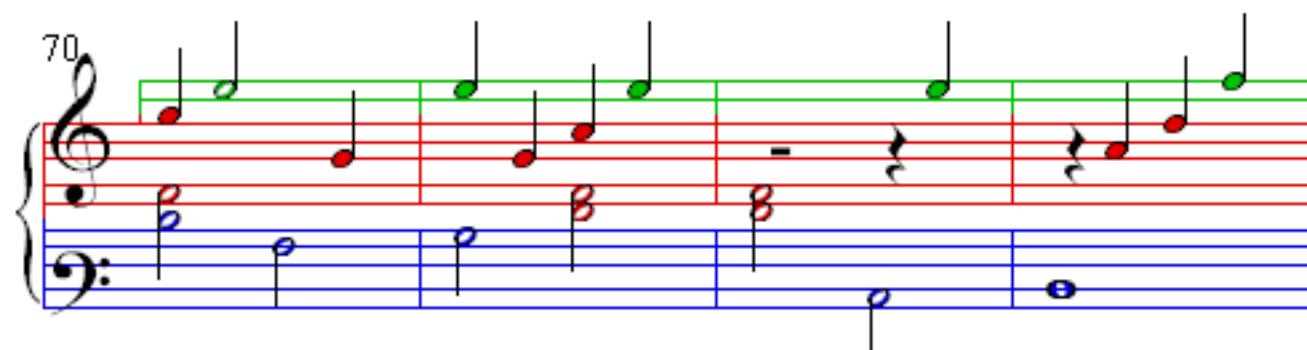
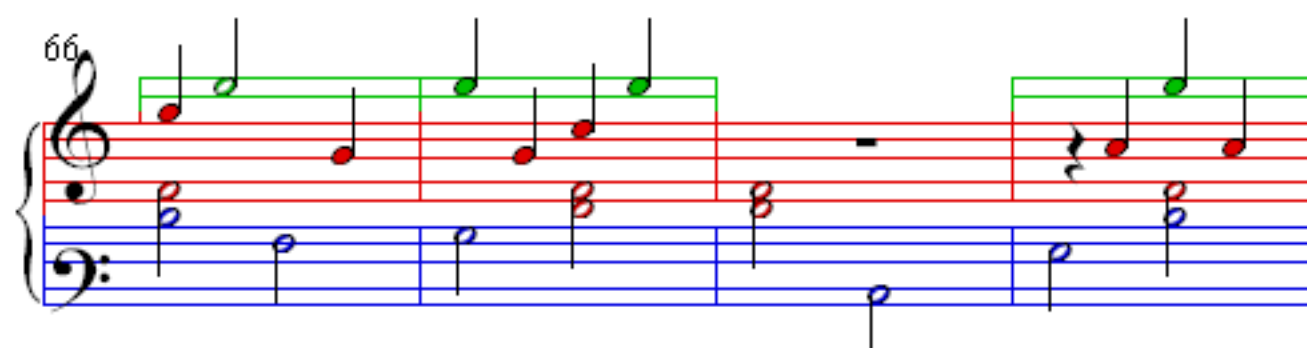
Measures 54-57 of the Maple Leaf Rag. The right hand (treble clef) continues the melody, with measures 54-55 highlighted in green and measures 56-57 in red. The left hand (bass clef) continues the accompaniment in blue. Measure 56 includes a whole rest in the right hand.

58

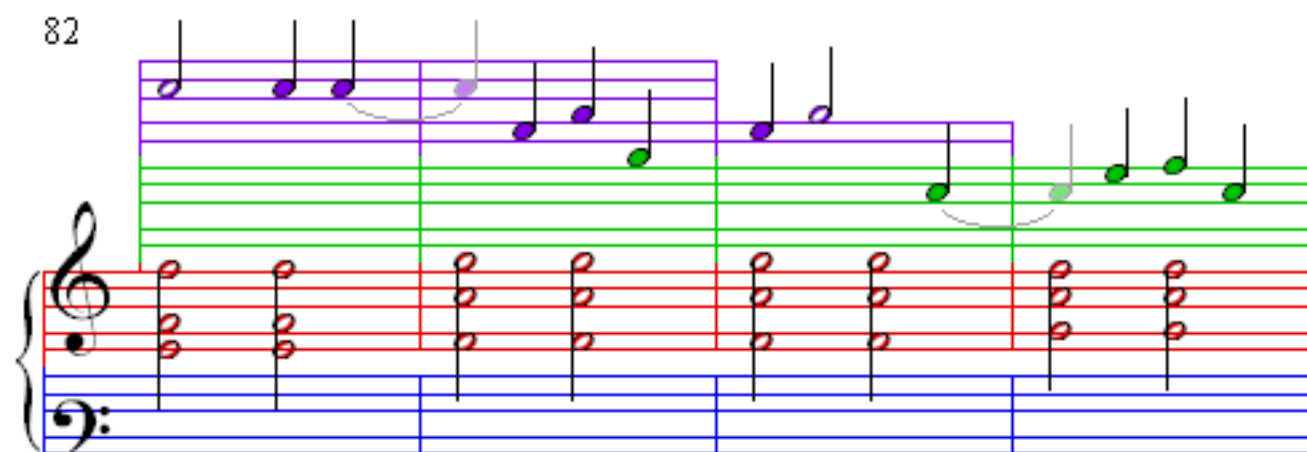
Measures 58-61 of the Maple Leaf Rag. The right hand (treble clef) features a melody of eighth notes, with measures 58-60 highlighted in green and measure 61 in red. The left hand (bass clef) provides a harmonic accompaniment with chords and single notes, colored blue.

62

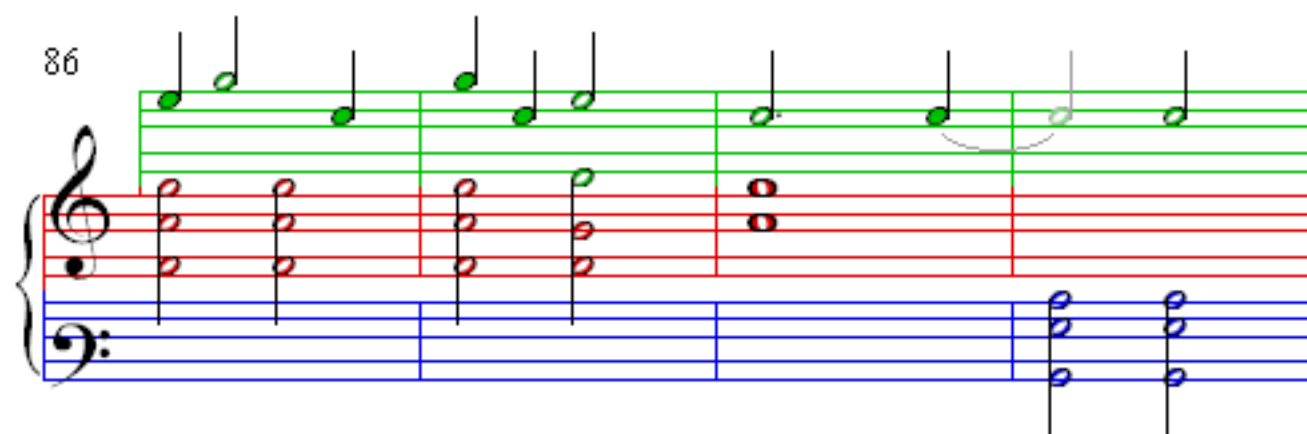
Measures 62-65 of the Maple Leaf Rag. The right hand (treble clef) features a melody of eighth notes, with measures 62-64 in red and measure 65 highlighted in green. The left hand (bass clef) provides a harmonic accompaniment with chords and single notes, colored blue. Measure 65 includes a whole rest in the right hand and a final chord in the left hand highlighted in orange.



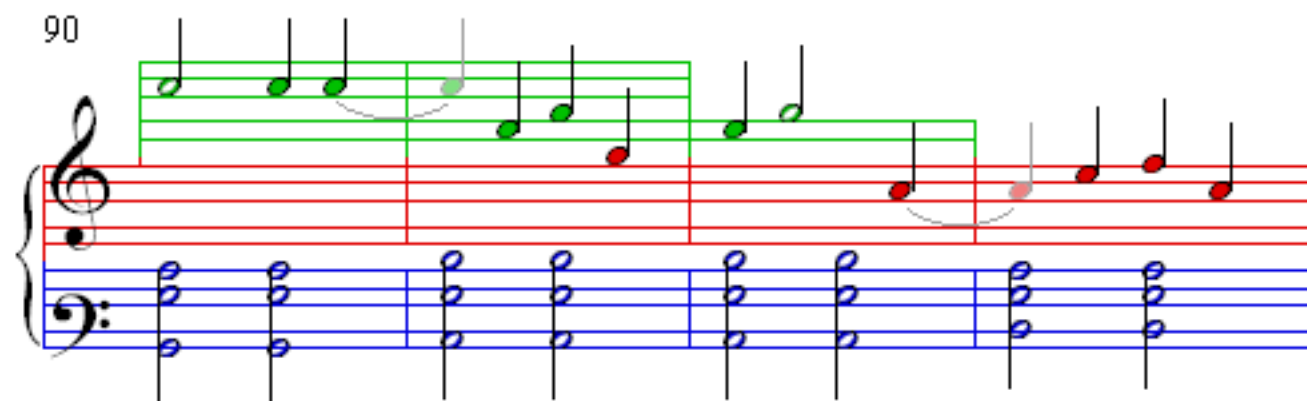
82



86



90



94

