

Wendy Waldman

$\bullet = 86$

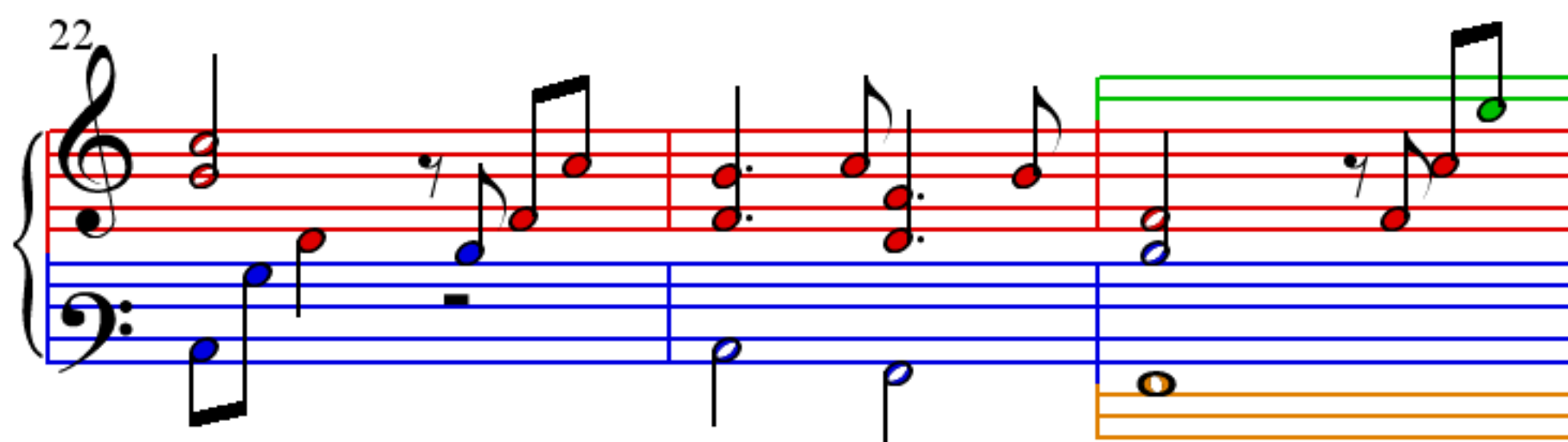
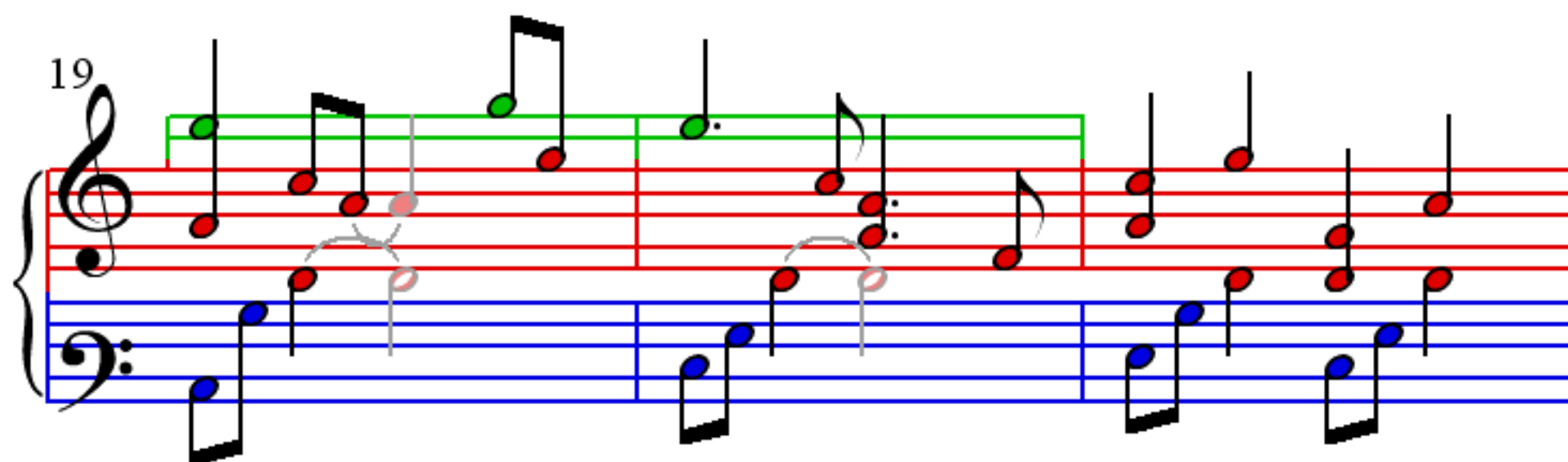
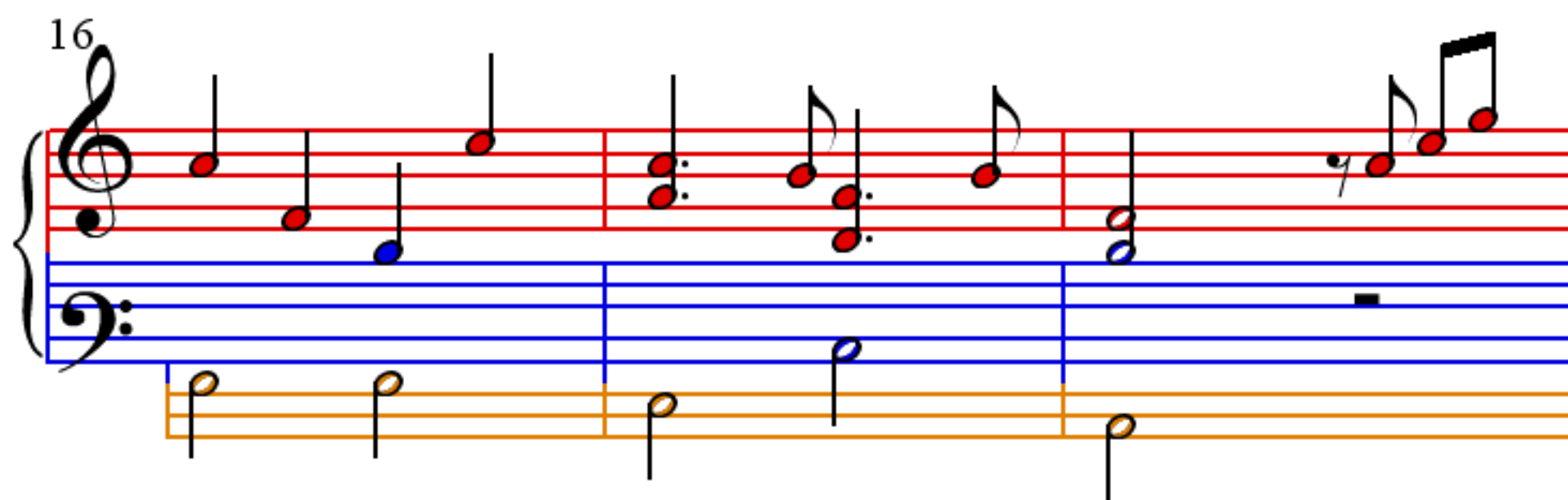
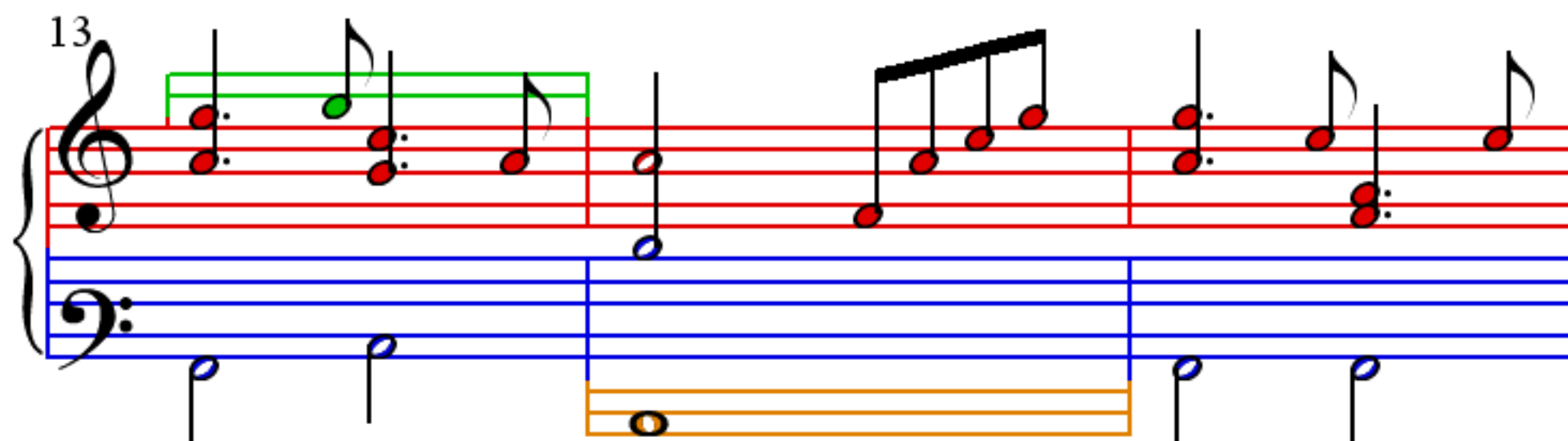
4

A musical score for the song 'The Rose Tree'. The score is written for three parts: Treble, Alto, and Bass. The Treble part is on a red staff, the Alto part is on a green staff, and the Bass part is on a blue staff. The music is in 4/4 time and consists of three measures. The first measure shows the Treble part with a quarter note G4 and a half note F#4, the Alto part with a quarter note G4 and a half note F#4, and the Bass part with a quarter note G2 and a half note F#2. The second measure shows the Treble part with a quarter note G4 and a half note F#4, the Alto part with a quarter note G4 and a half note F#4, and the Bass part with a quarter note G2 and a half note F#2. The third measure shows the Treble part with a quarter note G4 and a half note F#4, the Alto part with a quarter note G4 and a half note F#4, and the Bass part with a quarter note G2 and a half note F#2. The lyrics 'The Rose Tree' are written below the Bass staff.

7

A musical score for the song "The Rose Tree". The score is written for a piano and voice. The piano part is in 2/4 time and consists of two staves: a treble staff with a red line and a bass staff with a blue line. The voice part is written on a single treble staff with a green line. The key signature is one flat (B-flat). The score is divided into three measures. The first measure contains a whole note chord in the piano and a whole note in the voice. The second measure contains a half note chord in the piano and a half note in the voice. The third measure contains a whole note chord in the piano and a whole note in the voice. The piano part is marked with a "7" above the first measure, indicating a seventh chord. The voice part is marked with a "7" above the first measure, indicating a seventh note.

10.



25

1

28

31

35

39

43

47

51