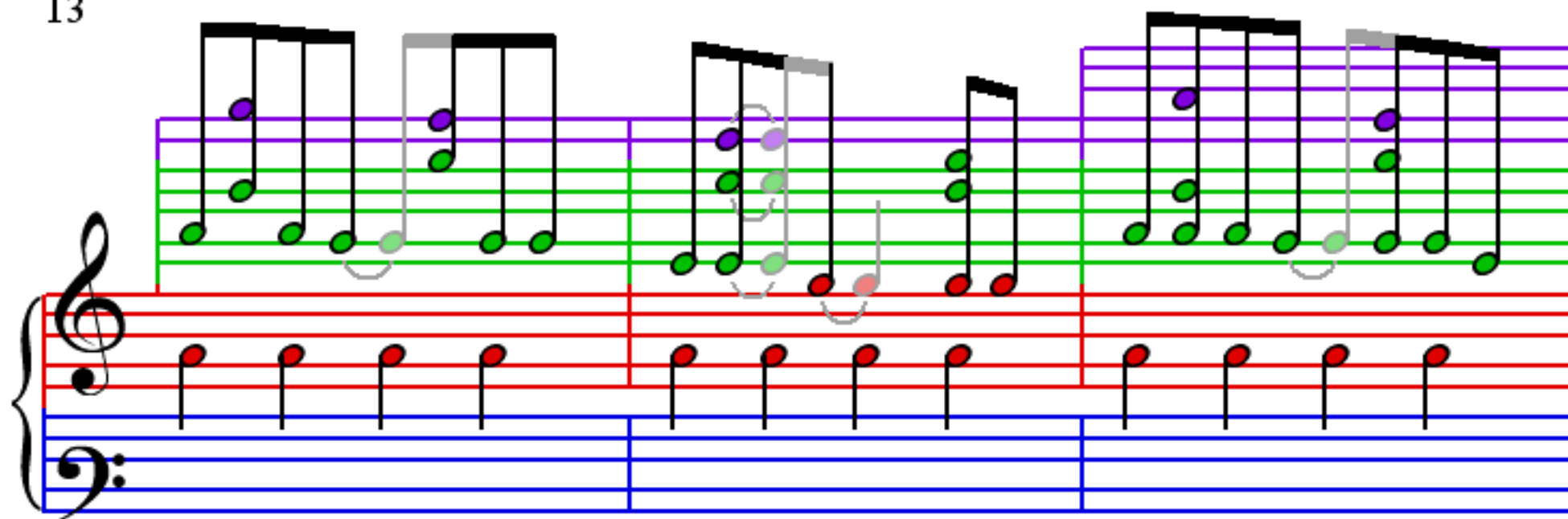
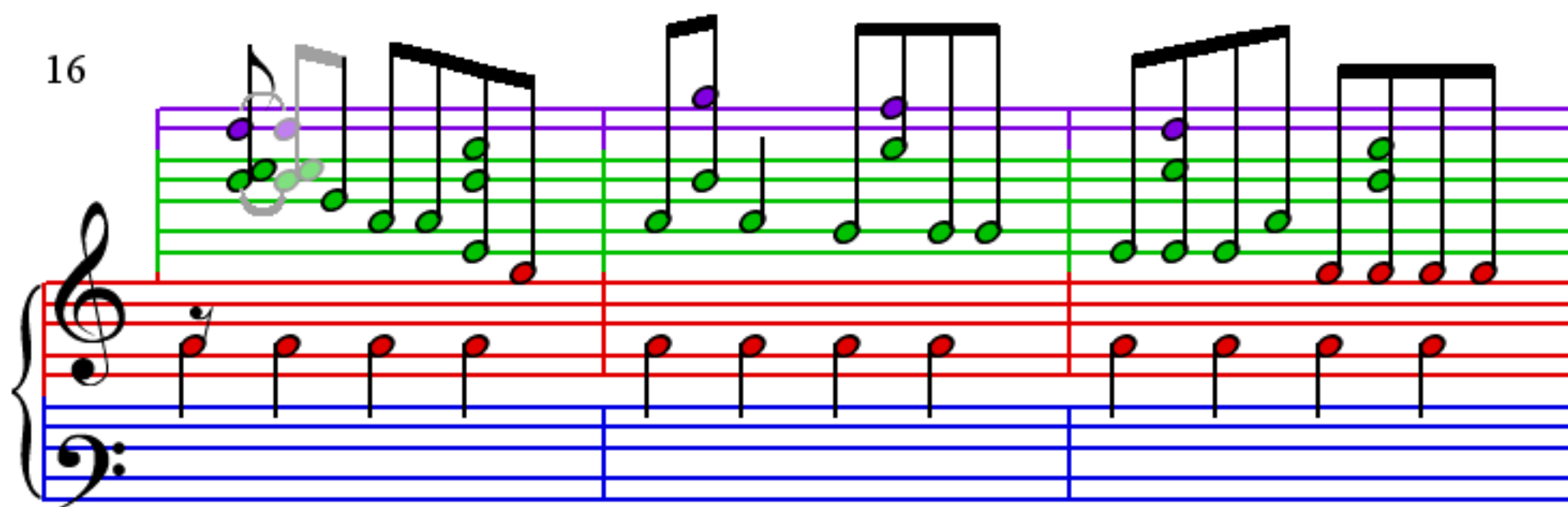


Silent All These Years

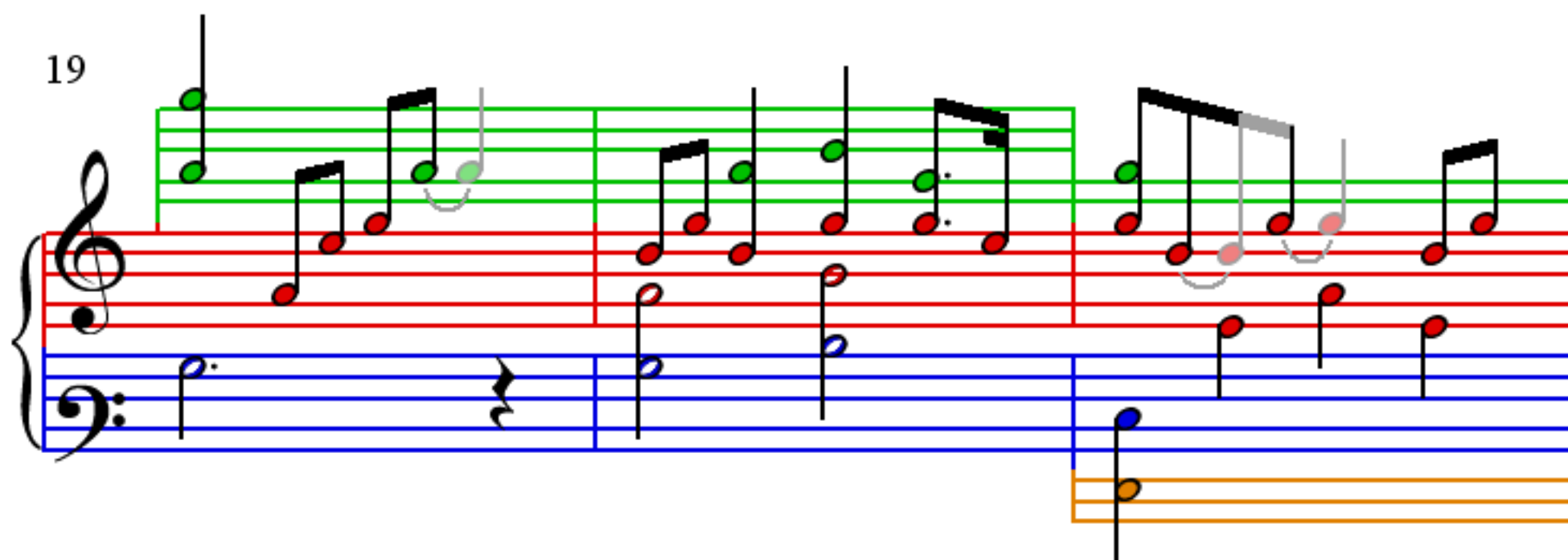
13



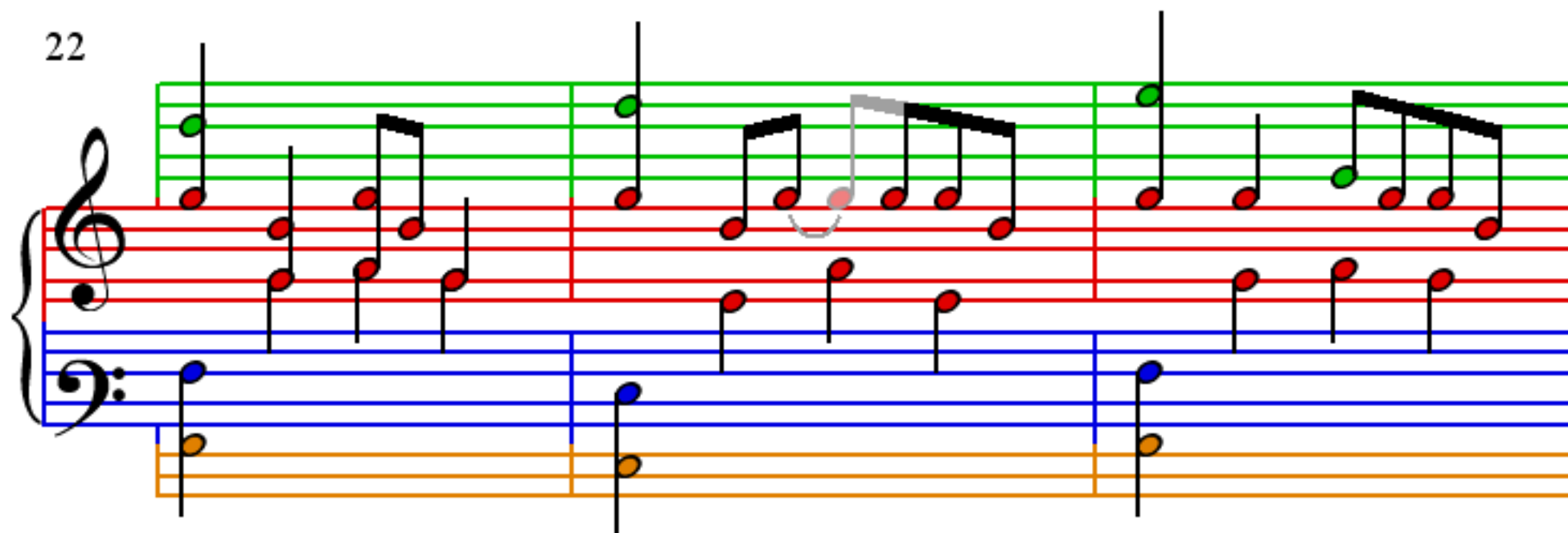
16



19



22



25

28

31

34

37

40

43

46

49

52

55

58

61

64

67

70

85

88

91

94

97

100

103

106

109

Measures 109-111 of the piece. Measure 109 features a treble clef with a half note G4 and a bass clef with a half note F3. Measure 110 shows a treble clef with a half note A4 and a bass clef with a half note G3. Measure 111 shows a treble clef with a half note B4 and a bass clef with a half note A3. The notation is color-coded: red for the treble staff, blue for the bass staff, and green for the melody line. A pink staff is also present below the bass staff.

112

Measures 112-114 of the piece. Measure 112 features a treble clef with a half note C5 and a bass clef with a half note F3. Measure 113 shows a treble clef with a half note D5 and a bass clef with a half note G3. Measure 114 shows a treble clef with a half note E5 and a bass clef with a half note A3. The notation is color-coded: red for the treble staff, blue for the bass staff, and green for the melody line. A pink staff is also present below the bass staff.

115

Measures 115-118 of the piece. Measure 115 features a treble clef with a half note F4 and a bass clef with a half note B2. Measure 116 shows a treble clef with a half note G4 and a bass clef with a half note C3. Measure 117 shows a treble clef with a half note A4 and a bass clef with a half note D3. Measure 118 shows a treble clef with a half note B4 and a bass clef with a half note E3. The notation is color-coded: red for the treble staff, blue for the bass staff, and green for the melody line. A pink staff is also present below the bass staff.

119

Measures 119-122 of the piece. Measure 119 features a treble clef with a half note C5 and a bass clef with a half note F3. Measure 120 shows a treble clef with a half note D5 and a bass clef with a half note G3. Measure 121 shows a treble clef with a half note E5 and a bass clef with a half note A3. Measure 122 shows a treble clef with a half note F5 and a bass clef with a half note B3. The notation is color-coded: red for the treble staff, blue for the bass staff, and green for the melody line. A pink staff is also present below the bass staff.