
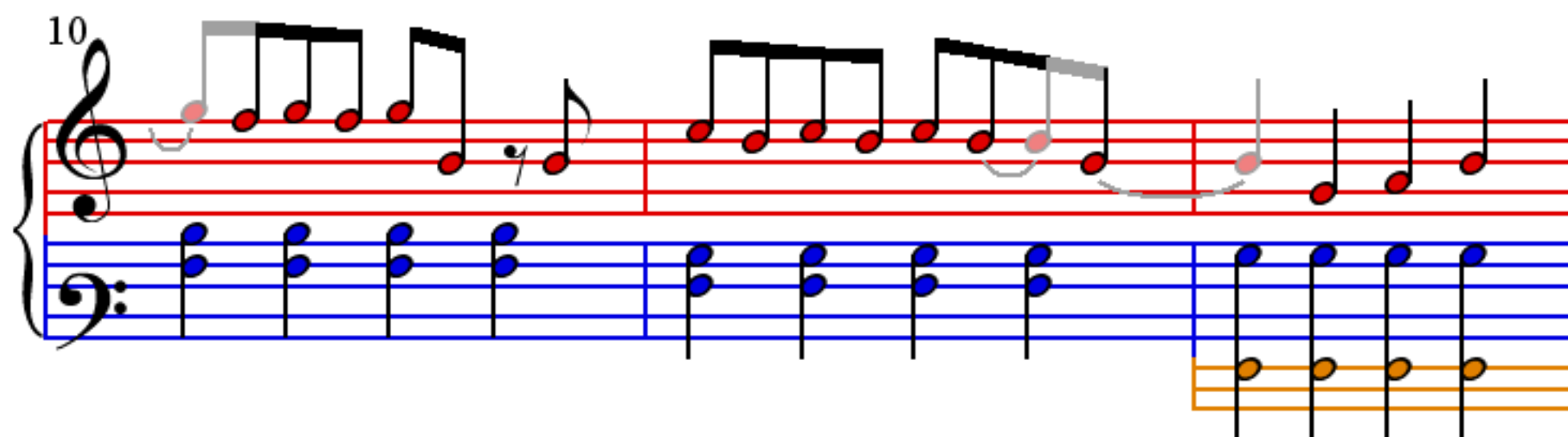
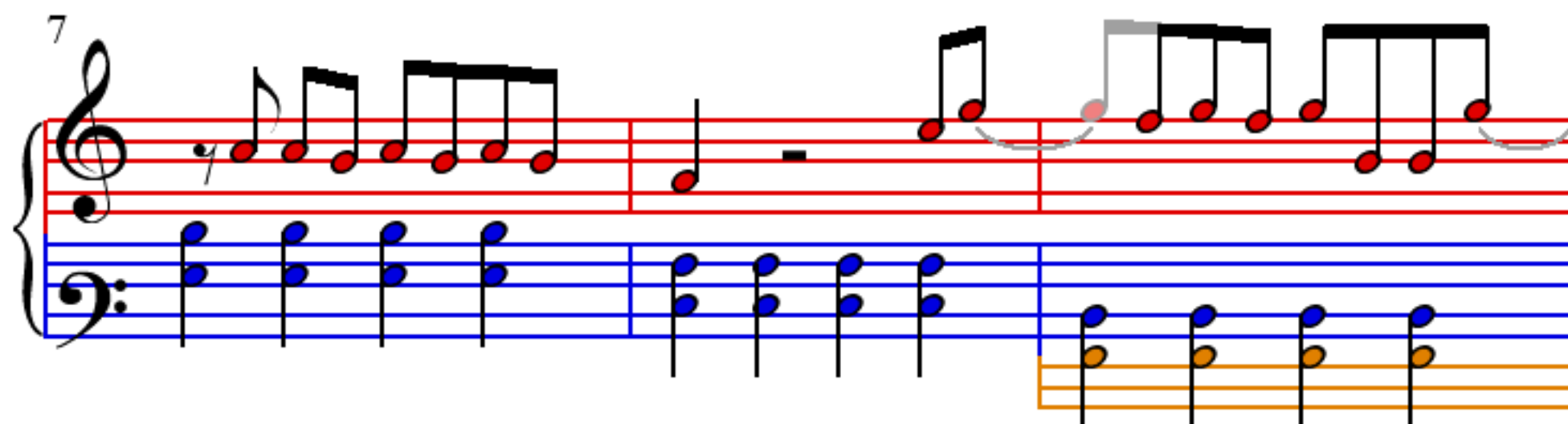
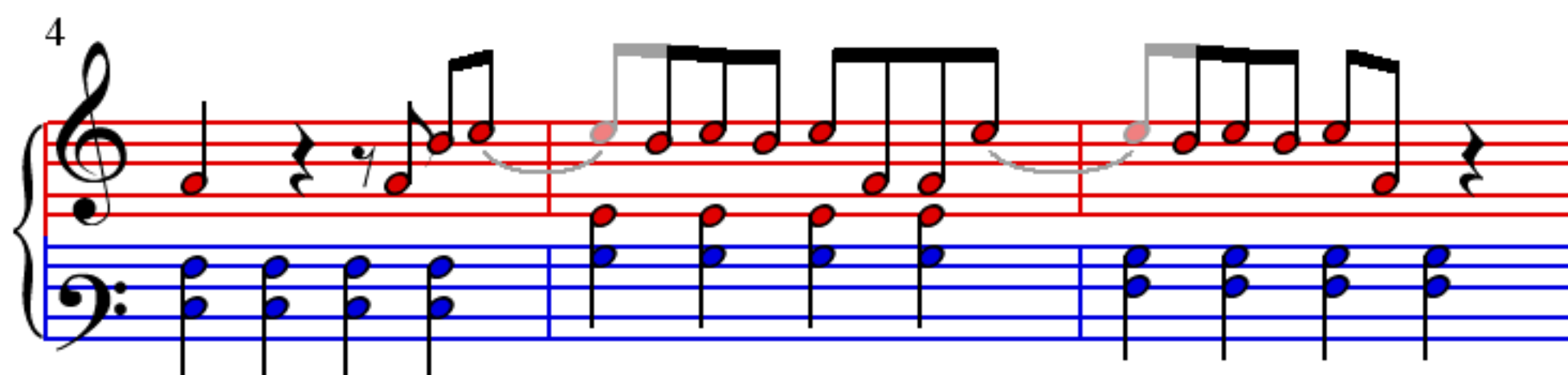
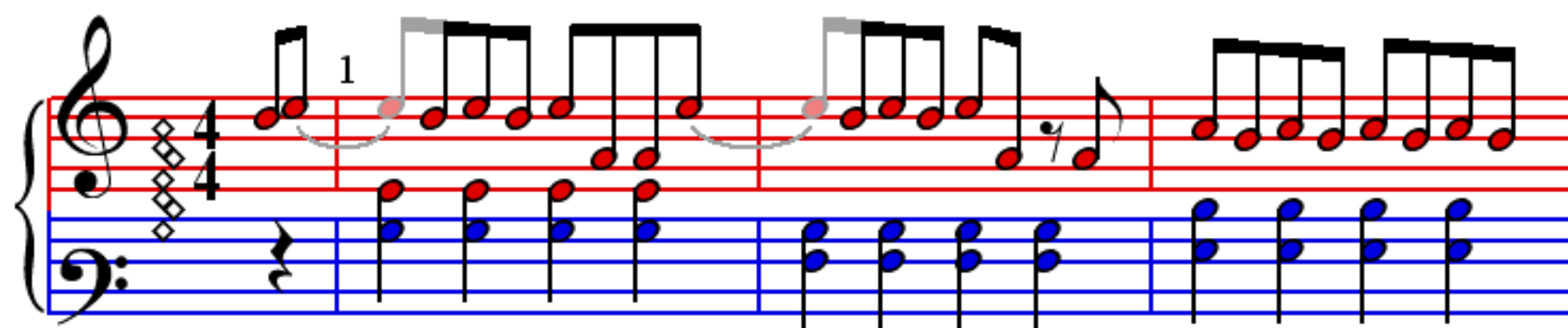


I Should be So Lucky

 = 120

Mike Stock, Matt Aitken & Pete Waterman



13

Measures 13-15. Treble clef: eighth-note patterns. Bass clef: eighth-note accompaniment. A third staff shows a descending eighth-note line.

16

Measures 16-18. Treble clef: eighth-note patterns with some notes highlighted in green. Bass clef: eighth-note accompaniment. A third staff shows a descending eighth-note line.

19

Measures 19-21. Treble clef: eighth-note patterns with some notes highlighted in green. Bass clef: eighth-note accompaniment. A third staff shows a descending eighth-note line.

22

Measures 22-24. Treble clef: eighth-note patterns with some notes highlighted in green. Bass clef: eighth-note accompaniment. A third staff shows a descending eighth-note line.