

Bagatelle No.2

Beethoven

$\text{♩} = 120$

1

Measures 1-3 of Bagatelle No. 2. The piece is in 3/4 time. The right hand (treble clef) plays a melody starting on G4, moving up stepwise to A4, B4, and C5. The left hand (bass clef) plays a bass line starting on G2, moving up stepwise to A2, B2, and C3. The notes are color-coded: green for the right hand and blue for the left hand. The first measure contains a dotted quarter note in the right hand and a half note in the left hand. The second and third measures contain quarter notes in both hands.

4

Measures 4-6 of Bagatelle No. 2. The right hand continues the melody with quarter notes. The left hand continues the bass line with quarter notes. The notes are color-coded: green for the right hand and blue for the left hand. The first measure contains a dotted quarter note in the right hand and a half note in the left hand. The second and third measures contain quarter notes in both hands.

7

Measures 7-9 of Bagatelle No. 2. The right hand continues the melody with quarter notes. The left hand continues the bass line with quarter notes. The notes are color-coded: green for the right hand and blue for the left hand. The first measure contains a dotted quarter note in the right hand and a half note in the left hand. The second and third measures contain quarter notes in both hands.

10

Measures 10-12 of Bagatelle No. 2. The right hand continues the melody with quarter notes. The left hand continues the bass line with quarter notes. The notes are color-coded: green for the right hand and blue for the left hand. The first measure contains a dotted quarter note in the right hand and a half note in the left hand. The second and third measures contain quarter notes in both hands.

13

Measures 13-15. Treble clef: Measure 13 has a green line above the staff. Notes are green (F4, G4) and red (A4, B4). Measure 14 has red notes (C5, D5). Measure 15 has green notes (E5, F5) and red notes (G5, A5). Bass clef: Measure 13 has a blue note (C3). Measure 14 has a blue note (D3). Measure 15 has a blue note (E3).

16

Measures 16-18. Treble clef: Measure 16 has a red note (F4). Measure 17 has a green note (G4) and a red note (A4). Measure 18 has a red note (B4). Bass clef: Measure 16 has an orange note (C3). Measure 17 has an orange note (D3). Measure 18 has an orange note (E3).

19

Measures 19-21. Treble clef: Measure 19 has a green note (F4), a green note (G4), and a red note (A4). Measure 20 has a red note (B4). Measure 21 has a green note (C5) and a red note (D5). Bass clef: Measure 19 has an orange note (C3). Measure 20 has an orange note (D3). Measure 21 has an orange note (E3).

22

Measures 22-24. Treble clef: Measure 22 has a green note (F4), a green note (G4), and a green note (A4). Measure 23 has a green note (B4) and a green note (C5). Measure 24 has a green note (D5) and a green note (E5). Bass clef: Measure 22 has an orange note (C3). Measure 23 has an orange note (D3). Measure 24 has an orange note (E3).

25

Measures 25-27. Treble clef: Measure 25 (green half note), Measure 26 (green half note), Measure 27 (green dotted half note, green beamed eighth notes). Bass clef: Measure 25 (blue half note), Measure 26 (blue half note), Measure 27 (blue half note).

28

Measures 28-30. Treble clef: Measure 28 (green half note), Measure 29 (green half note), Measure 30 (green half note). Bass clef: Measure 28 (blue half note, orange line), Measure 29 (blue half note, orange line), Measure 30 (blue half note).

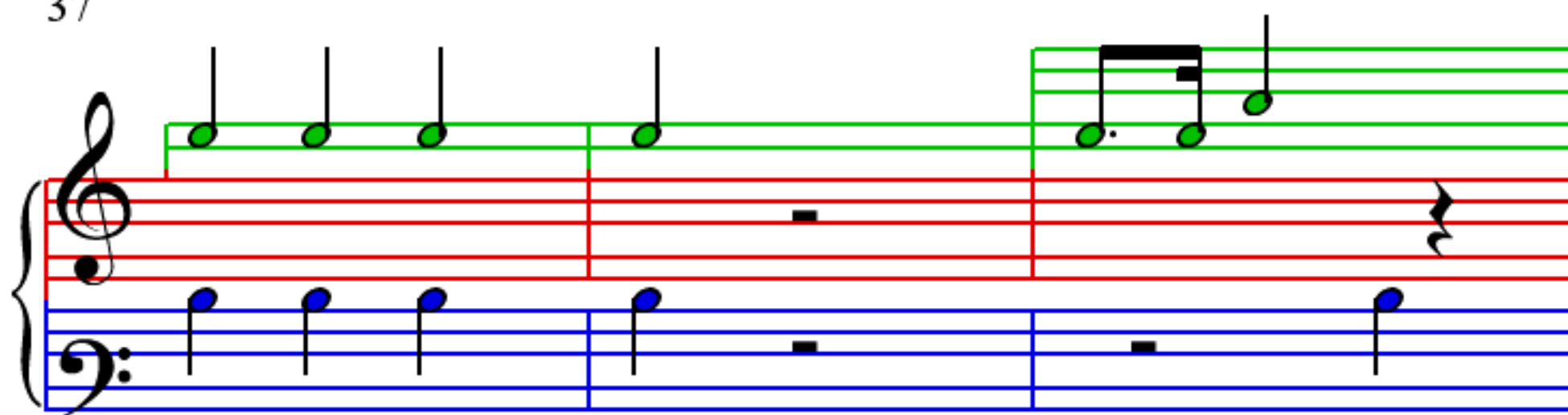
31

Measures 31-33. Treble clef: Measure 31 (red dotted half note, slur), Measure 32 (red dotted half note), Measure 33 (red dotted half note, repeat sign). Bass clef: Measure 31 (orange half note), Measure 32 (orange half note), Measure 33 (orange half note).

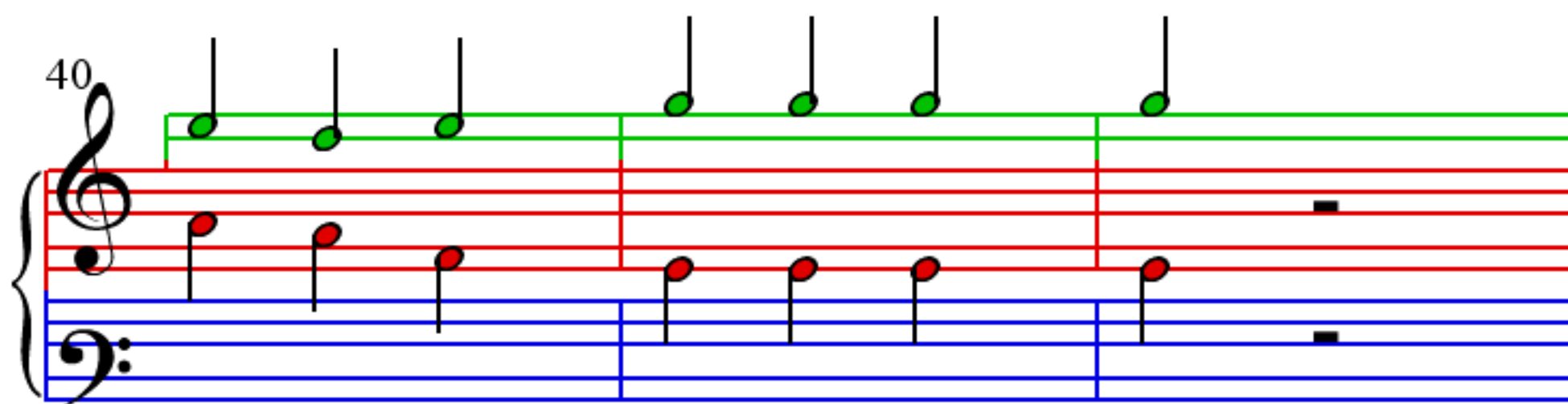
34

Measures 34-36. Treble clef: Measure 34 (red half note, slur), Measure 35 (green dotted half note, green beamed eighth notes), Measure 36 (green half note, repeat sign). Bass clef: Measure 34 (orange half note), Measure 35 (red half note), Measure 36 (red half note).

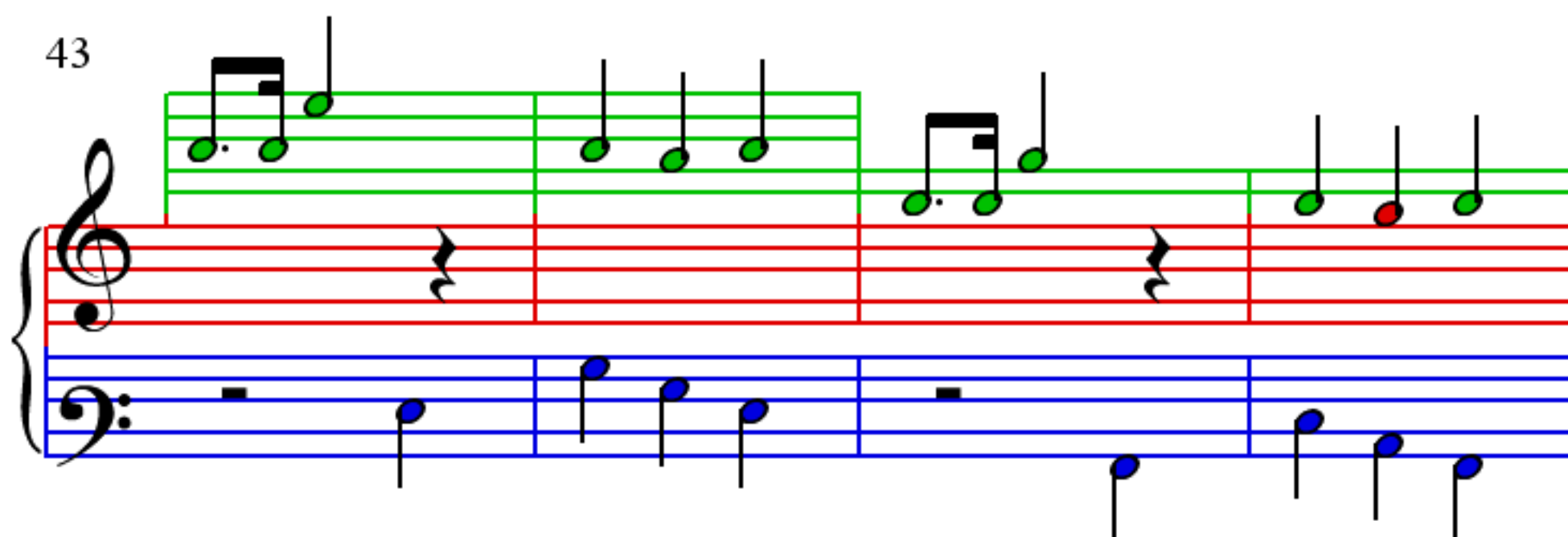
37



40



43



47

