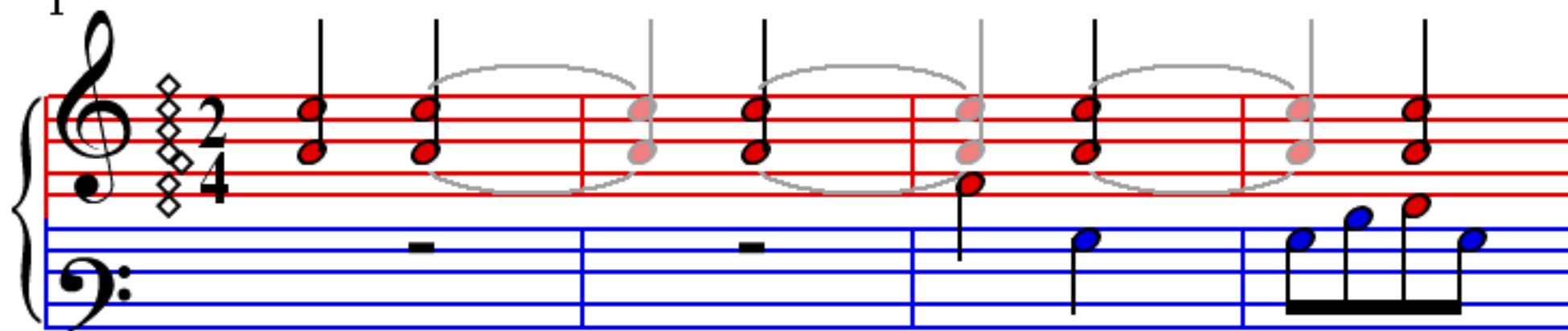


Ket Szal Punkosdrozsa

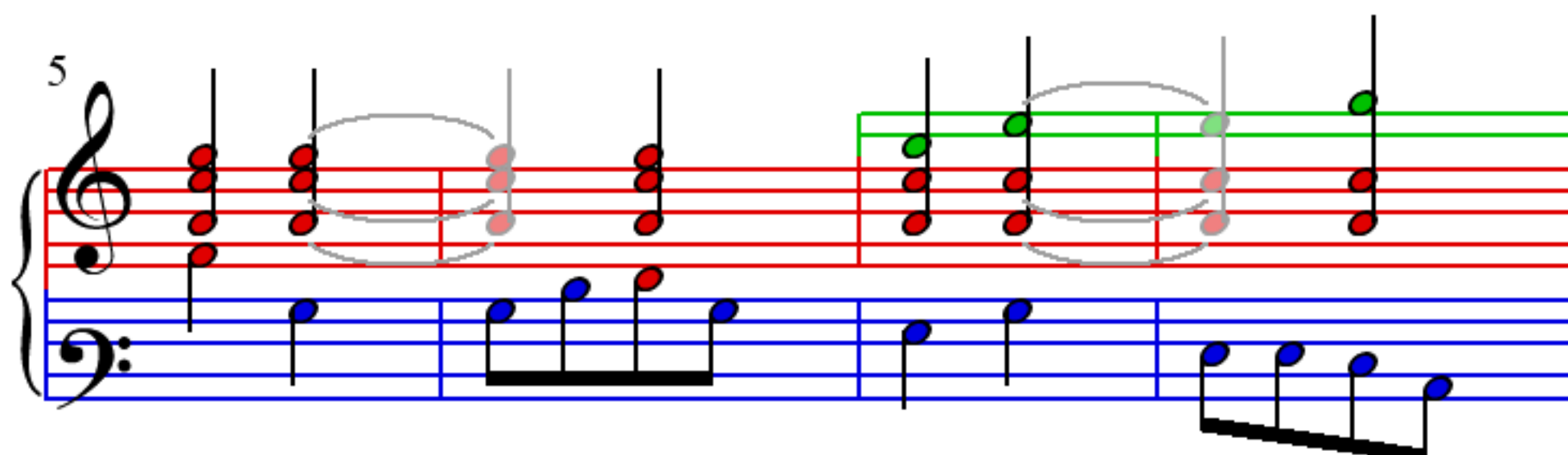
Sugar Rezzo

$\bullet = 120$

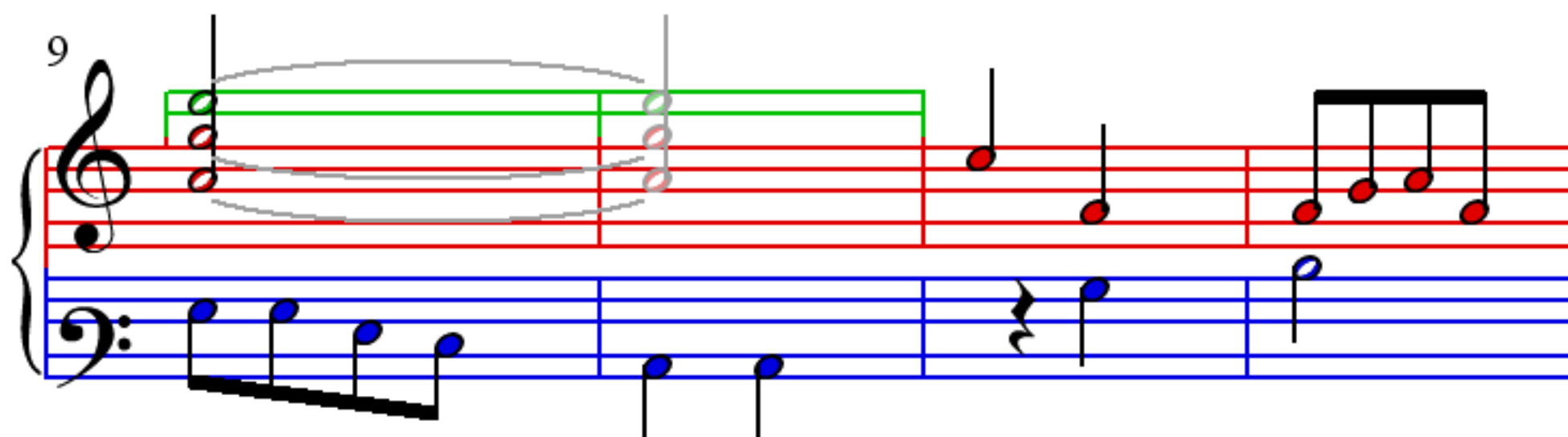
1



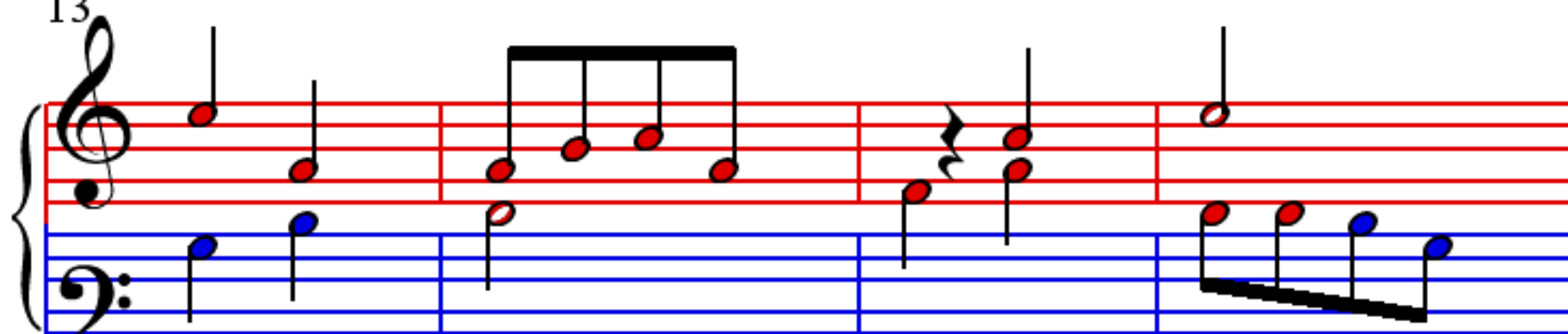
5



9



13



17

Measures 17-19. Treble clef has a green ledger line. Bass clef has a blue ledger line. Notes are red and blue. Measure 19 has a circled blue note in the bass.

20

Measures 20-22. Treble clef has a green ledger line. Bass clef has a blue ledger line. Notes are red and blue. Measure 22 has a circled blue note in the bass.

23

Measures 23-26. Treble clef has a green ledger line. Bass clef has a blue ledger line. Notes are red and blue. Measures 24, 25, and 26 have circled blue notes in the bass.

27

Measures 27-30. Treble clef has a green ledger line. Bass clef has a blue ledger line. Notes are red and blue. Measure 27 has a circled blue note in the bass.