

# Allegro

## First movement form Sonata in G

M. Clementi

1

4

7

10

13

Measures 13-15 of a musical score. The system consists of a grand staff with a treble and bass clef. The treble staff has a green staff line above it. The bass staff has a blue staff line below it. The music is written in a key with one flat (B-flat). Measure 13: Treble staff has a half note G4, a quarter note A4, and a quarter note B4. Bass staff has a half note F3. Measure 14: Treble staff has a half note A4, a quarter note B4, and a quarter note C5. Bass staff has a half note G3. Measure 15: Treble staff has a half note B4, a quarter note C5, and a quarter note D5. Bass staff has a half note A3. There are orange lines below the bass staff in measures 13 and 14.

16

Measures 16-18 of a musical score. The system consists of a grand staff with a treble and bass clef. The treble staff has a green staff line above it. The bass staff has a blue staff line below it. The music is written in a key with one flat (B-flat). Measure 16: Treble staff has a half note G4, a quarter note A4, and a quarter note B4. Bass staff has a half note F3. Measure 17: Treble staff has a half note A4, a quarter note B4, and a quarter note C5. Bass staff has a half note G3. Measure 18: Treble staff has a half note B4, a quarter note C5, and a quarter note D5. Bass staff has a half note A3. There are orange lines below the bass staff in measures 16 and 17.

19

Measures 19-21 of a musical score. The system consists of a grand staff with a treble and bass clef. The treble staff has a green staff line above it. The bass staff has a blue staff line below it. The music is written in a key with one flat (B-flat). Measure 19: Treble staff has a half note G4, a quarter note A4, and a quarter note B4. Bass staff has a half note F3. Measure 20: Treble staff has a half note A4, a quarter note B4, and a quarter note C5. Bass staff has a half note G3. Measure 21: Treble staff has a half note B4, a quarter note C5, and a quarter note D5. Bass staff has a half note A3. There are orange lines below the bass staff in measures 19 and 20.

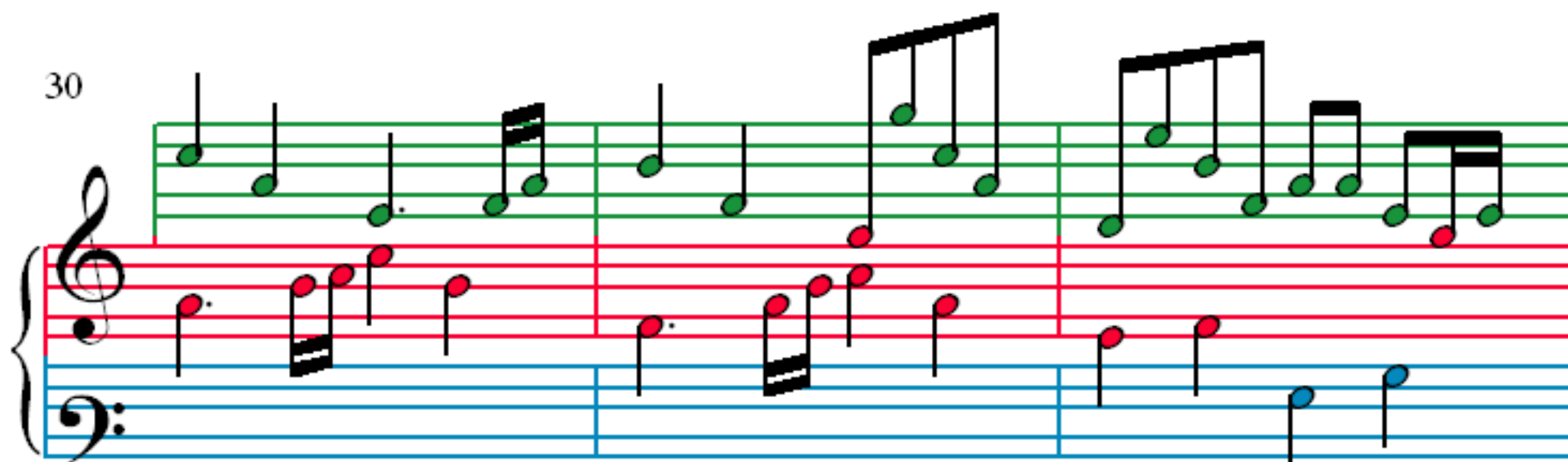
22

Measures 22-24 of a musical score. The system consists of a grand staff with a treble and bass clef. The treble staff has a green staff line above it. The bass staff has a blue staff line below it. The music is written in a key with one flat (B-flat). Measure 22: Treble staff has a half note G4, a quarter note A4, and a quarter note B4. Bass staff has a half note F3. Measure 23: Treble staff has a half note A4, a quarter note B4, and a quarter note C5. Bass staff has a half note G3. Measure 24: Treble staff has a half note B4, a quarter note C5, and a quarter note D5. Bass staff has a half note A3. There are orange lines below the bass staff in measures 22 and 23.

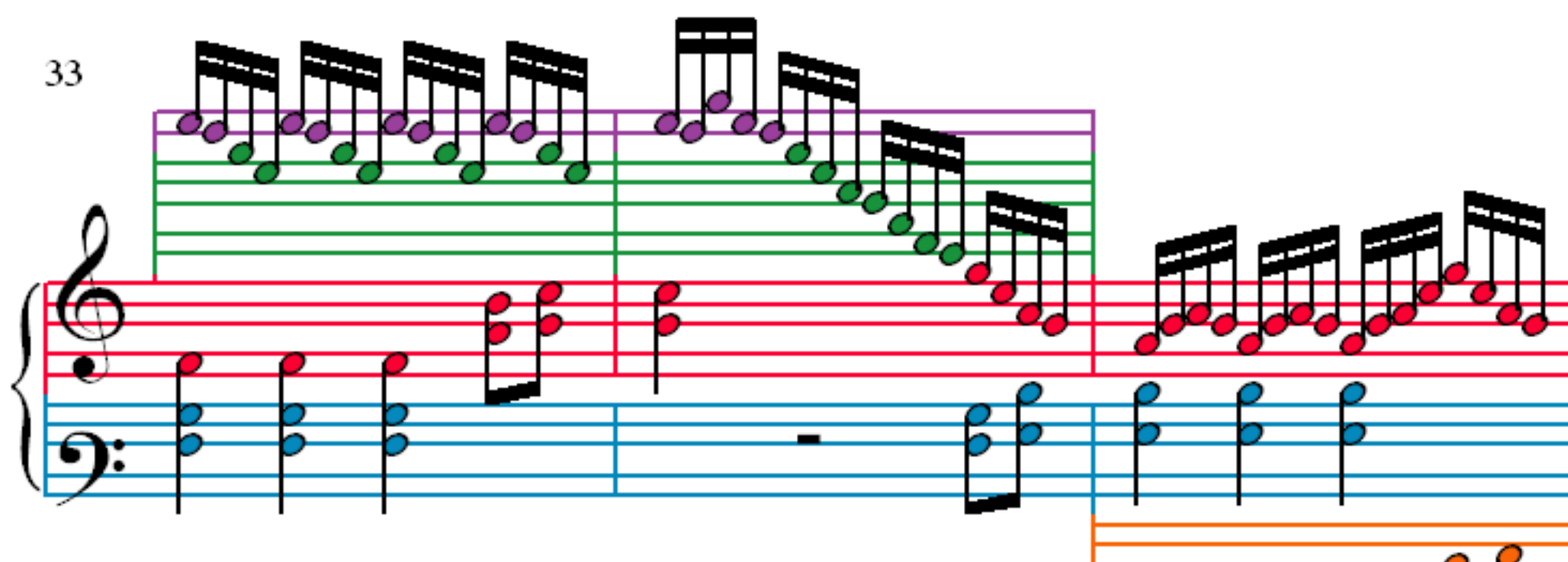
26



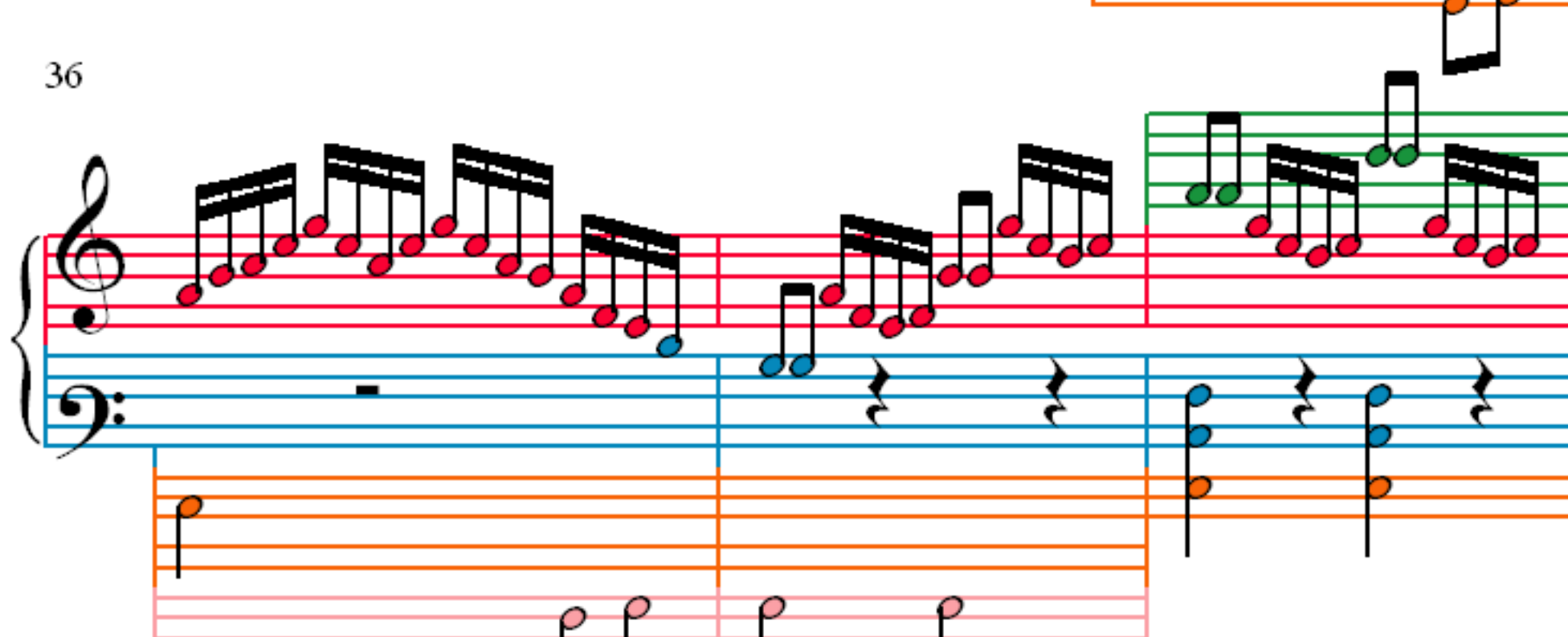
30



33



36



39

Measure 39: Treble clef has a whole rest; Bass clef has a quarter note G2 and a quarter note F2.

Measure 40: Treble clef has a half note G4 and a half note F4; Bass clef has a quarter note G2 and a quarter note F2.

Measure 41: Treble clef has a half note G4 and a half note F4; Bass clef has a quarter note G2 and a quarter note F2.

42

The musical score for Example 10.12 is presented in three measures. The vocal line, written on a single staff with a treble clef and a key signature of one flat, consists of the following notes:   
Measure 1: B-flat (quarter), A-flat (quarter), G-flat (quarter), F-flat (quarter).   
Measure 2: E-flat (quarter), D-flat (quarter), C-flat (quarter), B-flat (quarter).   
Measure 3: A-flat (quarter), G-flat (quarter), F-flat (quarter), E-flat (quarter).   
The piano accompaniment is written on two staves. The upper staff (treble clef) and lower staff (bass clef) both feature a steady eighth-note accompaniment. The notes are color-coded: green for the vocal line, red for the piano right hand, blue for the piano left hand, and orange for the piano left hand in the first measure.

45

The musical score for Example 10.10 is presented in two systems. The first system shows a vocal line (treble clef) and a piano accompaniment (bass clef). The piano accompaniment features a steady eighth-note bass line and chords in the right hand. The vocal line consists of a melody with various note values and rests. The second system continues the vocal line and piano accompaniment.

48

The musical score for measures 48-50 is presented on three staves. The top staff (treble clef) features a sequence of eighth notes in the right hand, with a final measure containing a beamed eighth-note triplet. The middle staff (treble clef) shows a single eighth note in the right hand in the first measure, followed by rests in the subsequent measures. The bottom staff (bass clef) contains a continuous eighth-note accompaniment in the left hand across all three measures. The staves are color-coded: green for the top staff, red for the middle staff, and blue for the bottom staff.

51

Measures 51-53. Treble clef: Measure 51 has two groups of four green eighth notes. Measure 52 has two groups of four green eighth notes. Measure 53 has two groups of four red eighth notes, ending with a fermata. Bass clef: Measure 51 has two groups of four blue eighth notes. Measure 52 has two groups of four blue eighth notes. Measure 53 has two groups of four blue eighth notes.

54

Measures 54-56. Treble clef: Measure 54 has a half rest. Measure 55 has two groups of four red eighth notes. Measure 56 has a half rest. Bass clef: Measure 54 has a half rest. Measure 55 has two groups of four blue eighth notes. Measure 56 has two groups of four blue eighth notes. An orange staff is present below the bass clef staff for measures 54-56, containing two groups of four orange eighth notes. A green staff is positioned above the treble clef staff for measure 56, containing a single green eighth note.

57

Measures 57-59. Treble clef: Measure 57 has two groups of four green eighth notes. Measure 58 has two groups of four green eighth notes. Measure 59 has two groups of four red eighth notes, ending with a fermata. Bass clef: Measure 57 has two groups of four blue eighth notes. Measure 58 has two groups of four blue eighth notes. Measure 59 has two groups of four blue eighth notes. An orange staff is present below the bass clef staff for measures 57-59, containing two groups of four orange eighth notes.

60

Measures 60-62. Treble clef: Measure 60 has two groups of four green eighth notes. Measure 61 has two groups of four green eighth notes. Measure 62 has two groups of four red eighth notes, ending with a fermata. Bass clef: Measure 60 has two groups of four blue eighth notes. Measure 61 has two groups of four blue eighth notes. Measure 62 has two groups of four blue eighth notes. An orange staff is present below the bass clef staff for measures 60-62, containing two groups of four orange eighth notes.

63

Measures 63-65. Treble clef: Measure 63 has a green eighth-note scale (C4-D4-E4-F4-G4-A4-B4) followed by a red eighth-note scale (B4-A4-G4-F4-E4-D4-C4). Measure 64 has a green eighth-note scale (C4-D4-E4-F4-G4-A4-B4) followed by a red eighth-note scale (B4-A4-G4-F4-E4-D4-C4). Measure 65 has a green eighth-note scale (C4-D4-E4-F4-G4-A4-B4) followed by a red eighth-note scale (B4-A4-G4-F4-E4-D4-C4). Bass clef: Measure 63 has a blue eighth-note scale (C3-D3-E3-F3-G3-A3-B3) followed by a red eighth-note scale (B3-A3-G3-F3-E3-D3-C3). Measure 64 has a blue eighth-note scale (C3-D3-E3-F3-G3-A3-B3) followed by a red eighth-note scale (B3-A3-G3-F3-E3-D3-C3). Measure 65 has a blue eighth-note scale (C3-D3-E3-F3-G3-A3-B3) followed by a red eighth-note scale (B3-A3-G3-F3-E3-D3-C3).

66

Measures 66-68. Treble clef: Measure 66 has a green eighth-note scale (C4-D4-E4-F4-G4-A4-B4) followed by a red eighth-note scale (B4-A4-G4-F4-E4-D4-C4). Measure 67 has a green eighth-note scale (C4-D4-E4-F4-G4-A4-B4) followed by a red eighth-note scale (B4-A4-G4-F4-E4-D4-C4). Measure 68 has a green eighth-note scale (C4-D4-E4-F4-G4-A4-B4) followed by a red eighth-note scale (B4-A4-G4-F4-E4-D4-C4). Bass clef: Measure 66 has a blue eighth-note scale (C3-D3-E3-F3-G3-A3-B3) followed by a red eighth-note scale (B3-A3-G3-F3-E3-D3-C3). Measure 67 has a blue eighth-note scale (C3-D3-E3-F3-G3-A3-B3) followed by a red eighth-note scale (B3-A3-G3-F3-E3-D3-C3). Measure 68 has a blue eighth-note scale (C3-D3-E3-F3-G3-A3-B3) followed by a red eighth-note scale (B3-A3-G3-F3-E3-D3-C3).

69

Measures 69-71. Treble clef: Measure 69 has a green eighth-note scale (C4-D4-E4-F4-G4-A4-B4) followed by a red eighth-note scale (B4-A4-G4-F4-E4-D4-C4). Measure 70 has a green eighth-note scale (C4-D4-E4-F4-G4-A4-B4) followed by a red eighth-note scale (B4-A4-G4-F4-E4-D4-C4). Measure 71 has a green eighth-note scale (C4-D4-E4-F4-G4-A4-B4) followed by a red eighth-note scale (B4-A4-G4-F4-E4-D4-C4). Bass clef: Measure 69 has a blue eighth-note scale (C3-D3-E3-F3-G3-A3-B3) followed by a red eighth-note scale (B3-A3-G3-F3-E3-D3-C3). Measure 70 has a blue eighth-note scale (C3-D3-E3-F3-G3-A3-B3) followed by a red eighth-note scale (B3-A3-G3-F3-E3-D3-C3). Measure 71 has a blue eighth-note scale (C3-D3-E3-F3-G3-A3-B3) followed by a red eighth-note scale (B3-A3-G3-F3-E3-D3-C3).

72

Measures 72-74. Treble clef: Measure 72 has a green eighth-note scale (C4-D4-E4-F4-G4-A4-B4) followed by a red eighth-note scale (B4-A4-G4-F4-E4-D4-C4). Measure 73 has a green eighth-note scale (C4-D4-E4-F4-G4-A4-B4) followed by a red eighth-note scale (B4-A4-G4-F4-E4-D4-C4). Measure 74 has a green eighth-note scale (C4-D4-E4-F4-G4-A4-B4) followed by a red eighth-note scale (B4-A4-G4-F4-E4-D4-C4). Bass clef: Measure 72 has a blue eighth-note scale (C3-D3-E3-F3-G3-A3-B3) followed by a red eighth-note scale (B3-A3-G3-F3-E3-D3-C3). Measure 73 has a blue eighth-note scale (C3-D3-E3-F3-G3-A3-B3) followed by a red eighth-note scale (B3-A3-G3-F3-E3-D3-C3). Measure 74 has a blue eighth-note scale (C3-D3-E3-F3-G3-A3-B3) followed by a red eighth-note scale (B3-A3-G3-F3-E3-D3-C3).



75

75

A musical score for the song 'The Rose Tree'. It features three staves: a treble staff with a purple treble clef, a middle staff with a red bass clef, and a bottom staff with a blue bass clef. The treble staff contains a melody of eighth notes, with the first four measures grouped by a purple bracket and the next four by a green bracket. The middle staff is empty. The bottom staff contains a bass line of eighth notes, with the first four measures grouped by an orange bracket and the next four by a blue bracket. The notes are color-coded: purple for the treble staff, red for the middle staff, and blue for the bottom staff. The background is white with a light gray grid.

78

78

The image shows a musical score for the song 'The Rose Tree'. It features three staves: a vocal line at the top, a piano accompaniment line in the middle, and a bass line at the bottom. The vocal line is written on a five-line staff with a treble clef and contains three measures of music. The piano accompaniment is written on a grand staff (treble and bass clefs) and contains three measures of music. The bass line is written on a single staff with a bass clef and contains three measures of music. The music is in 3/4 time and is in the key of G major. The melody is a simple, catchy tune. The piano accompaniment provides a harmonic foundation for the melody. The bass line provides a steady, rhythmic accompaniment. The score is presented in a clear, easy-to-read format with color-coded staves and notes.

81

81

The image shows a musical score for a piano accompaniment. It consists of two staves: a treble staff (top) and a bass staff (bottom). The treble staff has a green staff line, and the bass staff has a blue staff line. The melody is written in the treble staff, and the piano accompaniment is written in the bass staff. The score is divided into three measures by vertical bar lines. The melody consists of eighth and quarter notes, and the piano accompaniment consists of eighth and quarter notes. The notes are colored red, green, and blue.

84

84

87

Measures 87-89 of a musical score. The system consists of a grand staff with a treble clef and a bass clef. The treble staff has a green line above it. The bass staff has a blue line below it. The music is written in a key with one flat (B-flat). Measure 87: Treble staff has a single green note on the first line. Bass staff has a sequence of notes: G4, A4, B4, C5, B4, A4, G4. Measure 88: Treble staff has a single green note on the first line. Bass staff has a sequence of notes: G4, A4, B4, C5, B4, A4, G4. Measure 89: Treble staff has a single green note on the first line. Bass staff has a sequence of notes: G4, A4, B4, C5, B4, A4, G4. There is an orange box around the bass staff in measure 88.

90

Measures 90-92 of a musical score. The system consists of a grand staff with a treble clef and a bass clef. The treble staff has a green line above it. The bass staff has a blue line below it. The music is written in a key with one flat (B-flat). Measure 90: Treble staff has a sequence of notes: G4, A4, B4, C5, B4, A4, G4. Bass staff has a sequence of notes: G4, A4, B4, C5, B4, A4, G4. Measure 91: Treble staff has a sequence of notes: G4, A4, B4, C5, B4, A4, G4. Bass staff has a sequence of notes: G4, A4, B4, C5, B4, A4, G4. Measure 92: Treble staff has a sequence of notes: G4, A4, B4, C5, B4, A4, G4. Bass staff has a sequence of notes: G4, A4, B4, C5, B4, A4, G4.

93

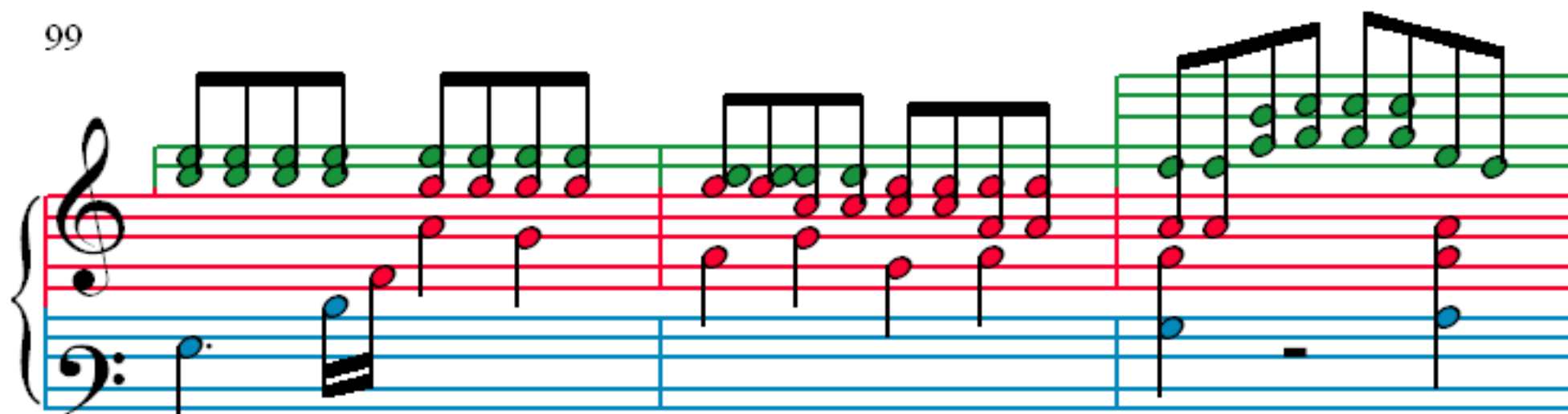
Measures 93-95 of a musical score. The system consists of a grand staff with a treble clef and a bass clef. The treble staff has a green line above it. The bass staff has a blue line below it. The music is written in a key with one flat (B-flat). Measure 93: Treble staff has a sequence of notes: G4, A4, B4, C5, B4, A4, G4. Bass staff has a sequence of notes: G4, A4, B4, C5, B4, A4, G4. Measure 94: Treble staff has a sequence of notes: G4, A4, B4, C5, B4, A4, G4. Bass staff has a sequence of notes: G4, A4, B4, C5, B4, A4, G4. Measure 95: Treble staff has a sequence of notes: G4, A4, B4, C5, B4, A4, G4. Bass staff has a sequence of notes: G4, A4, B4, C5, B4, A4, G4.

96

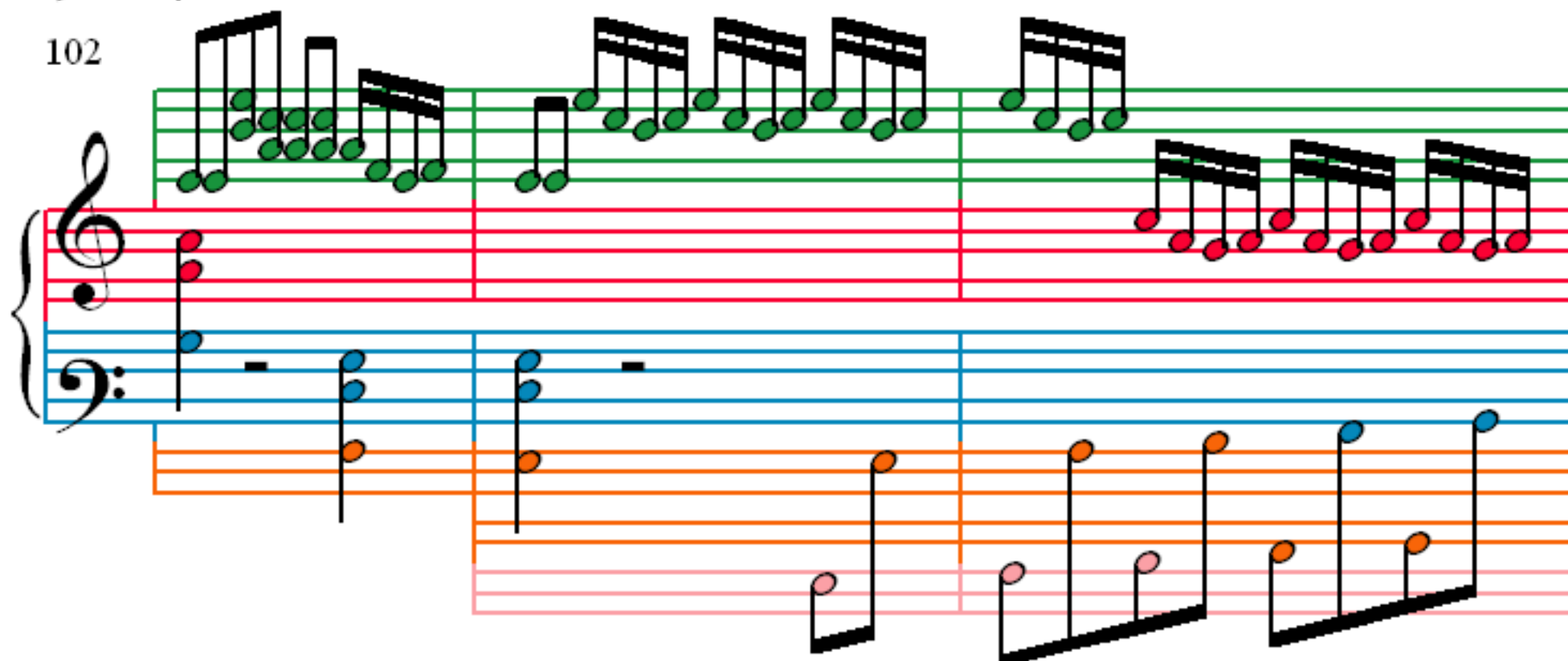
Measures 96-98 of a musical score. The system consists of a grand staff with a treble clef and a bass clef. The treble staff has a green line above it. The bass staff has a blue line below it. The music is written in a key with one flat (B-flat). Measure 96: Treble staff has a sequence of notes: G4, A4, B4, C5, B4, A4, G4. Bass staff has a sequence of notes: G4, A4, B4, C5, B4, A4, G4. Measure 97: Treble staff has a sequence of notes: G4, A4, B4, C5, B4, A4, G4. Bass staff has a sequence of notes: G4, A4, B4, C5, B4, A4, G4. Measure 98: Treble staff has a sequence of notes: G4, A4, B4, C5, B4, A4, G4. Bass staff has a sequence of notes: G4, A4, B4, C5, B4, A4, G4.



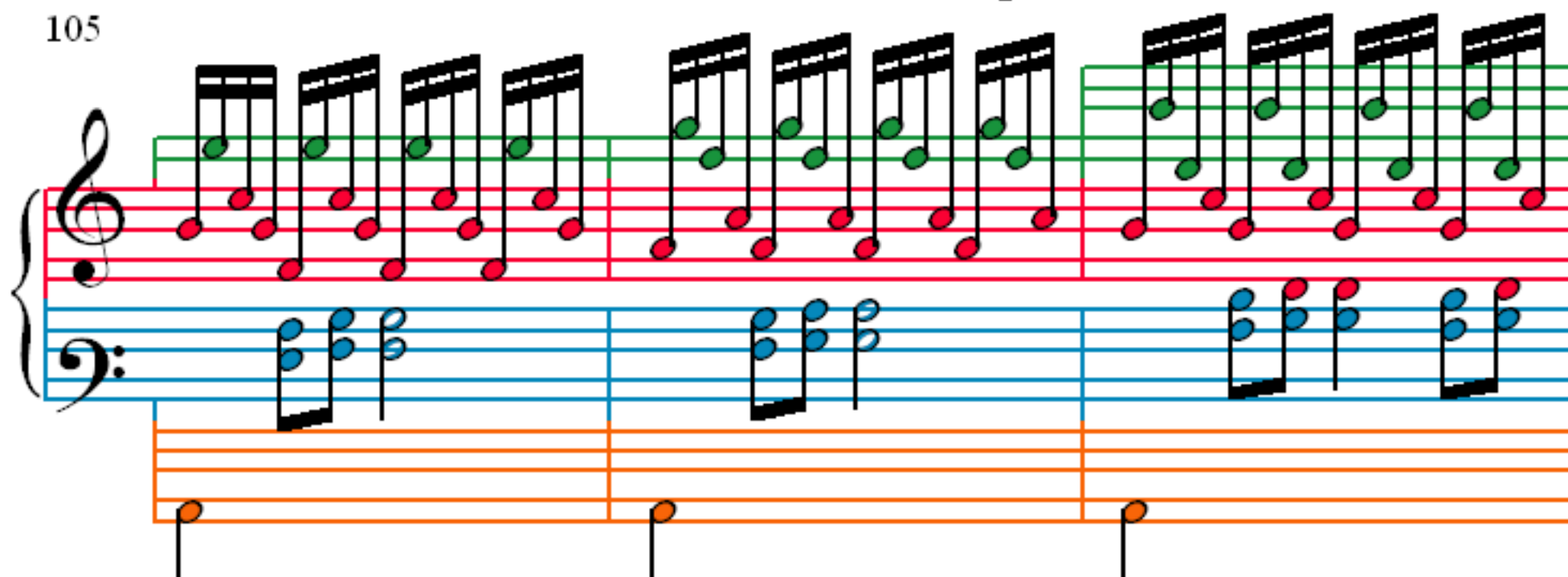
99



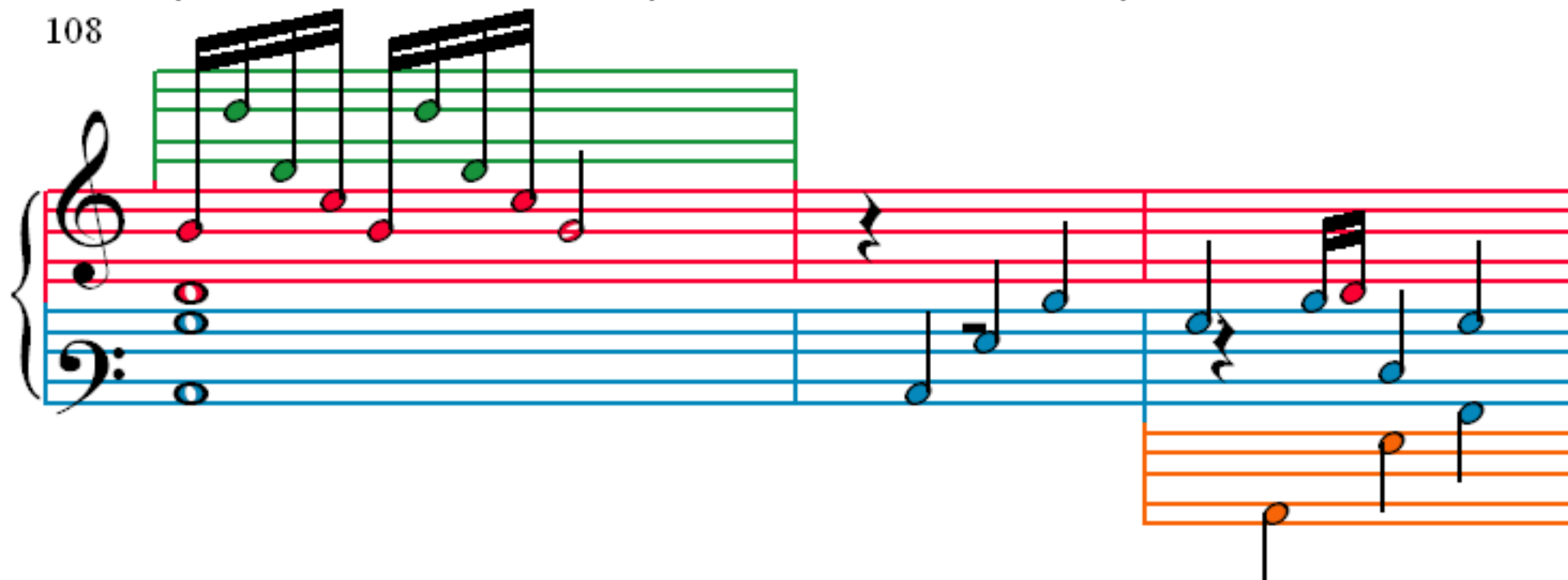
102



105



108



111

Measures 111-113. Treble clef: red notes. Bass clef: blue notes. An orange staff is positioned below the bass clef staff.

114

Measures 114-116. Treble clef: red notes. Bass clef: blue notes. An orange staff is positioned below the bass clef staff.

117

Measures 117-119. Treble clef: green notes. Bass clef: blue notes. An orange staff is positioned below the bass clef staff.

120

Measures 120-122. Treble clef: green notes. Bass clef: blue notes. An orange staff is positioned below the bass clef staff.

122

Measures 122-123. Treble clef: rapid ascending sixteenth-note scale. Bass clef: single note, then rest. Third staff: few notes.

124

Measures 124-126. Treble clef: rapid ascending sixteenth-note scale. Bass clef: rest, then eighth notes. Third staff: few notes.

127

Measures 127-129. Treble clef: rest, then quarter notes. Bass clef: rest, then quarter notes. Third staff: few notes.

130

Measures 130-132. Treble clef: quarter notes. Bass clef: rest, then quarter notes. Third staff: few notes.

132

Measures 132 and 133 of a musical score. Measure 132 features a treble staff with a green staff above it and a bass staff with an orange staff below it. Measure 133 features a green staff above the treble staff and an orange staff below the bass staff. The notation includes various note values and rests.

134

Measures 134 and 135 of a musical score. Measure 134 features a treble staff with a green staff above it and a bass staff with an orange staff below it. Measure 135 features a green staff above the treble staff and an orange staff below the bass staff. The notation includes various note values and rests.

136

Measures 136 and 137 of a musical score. Measure 136 features a treble staff with a green staff above it and a bass staff with an orange staff below it. Measure 137 features a green staff above the treble staff and an orange staff below the bass staff. The notation includes various note values and rests.

138

Measures 138 and 139 of a musical score. Measure 138 features a treble staff with a green staff above it and a bass staff with an orange staff below it. Measure 139 features a green staff above the treble staff and an orange staff below the bass staff. The notation includes various note values and rests.

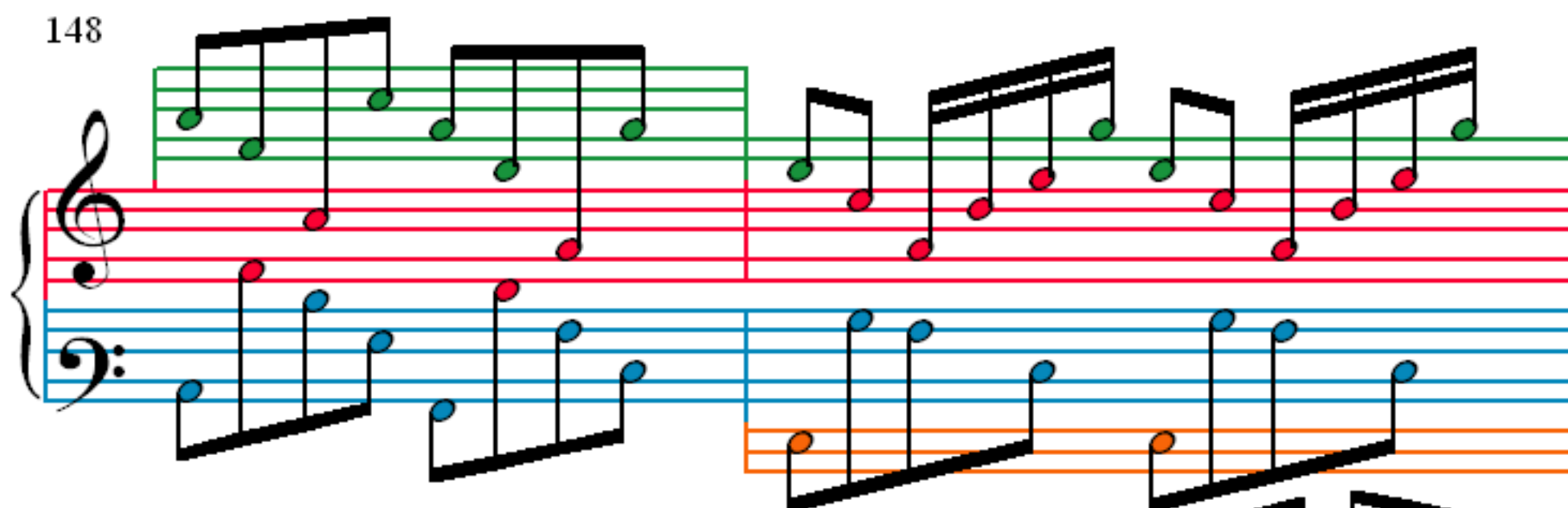
140

142

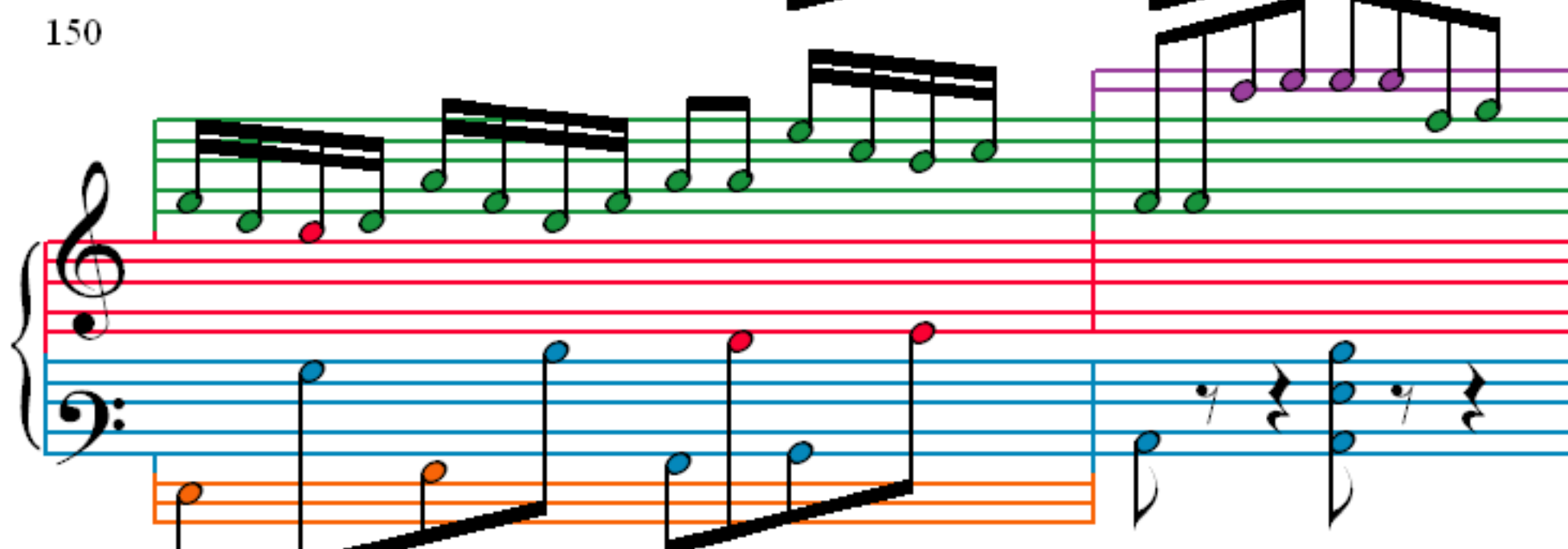
144

146

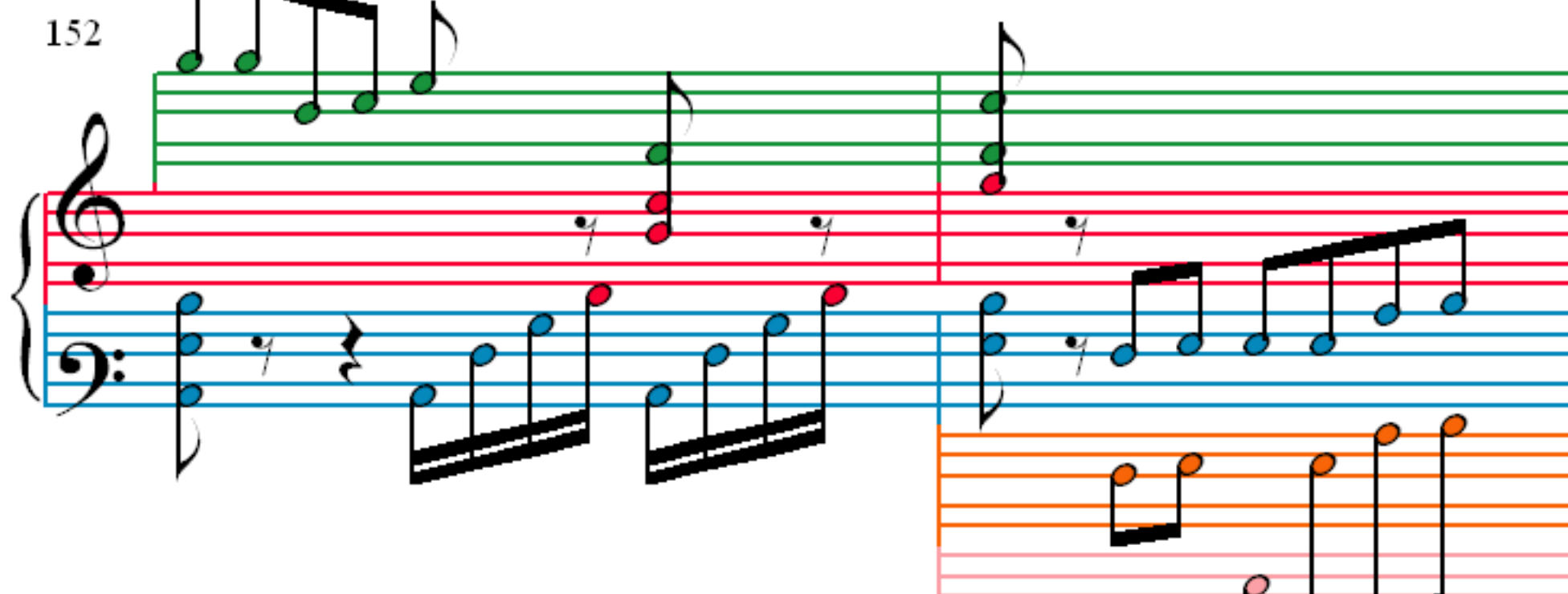
148



150



152



154

