

# Golliwog Cake Walk

$\text{♩} = 125$

Debussy

1

Measures 1-4 of the piece. The treble clef staff has a key signature of one flat (B-flat) and a time signature of 4/4. The bass clef staff has a key signature of one flat (B-flat). The first measure (measure 1) features a green-shaded area with eighth notes in the treble and a whole note in the bass. The second measure (measure 2) has a red-shaded area with eighth notes in the treble and a whole note in the bass. The third measure (measure 3) has a blue-shaded area with eighth notes in the treble and a whole note in the bass. The fourth measure (measure 4) has a blue-shaded area with eighth notes in the treble and a whole note in the bass.

5

Measures 5-8 of the piece. The treble clef staff has a key signature of one flat (B-flat) and a time signature of 4/4. The bass clef staff has a key signature of one flat (B-flat). The fifth measure (measure 5) features a red-shaded area with eighth notes in the treble and a whole note in the bass. The sixth measure (measure 6) has a blue-shaded area with eighth notes in the treble and a whole note in the bass. The seventh measure (measure 7) has a blue-shaded area with eighth notes in the treble and a whole note in the bass. The eighth measure (measure 8) has a blue-shaded area with eighth notes in the treble and a whole note in the bass.

9

Measures 9-12 of the piece. The treble clef staff has a key signature of one flat (B-flat) and a time signature of 4/4. The bass clef staff has a key signature of one flat (B-flat). The ninth measure (measure 9) features a red-shaded area with eighth notes in the treble and a whole note in the bass. The tenth measure (measure 10) has a blue-shaded area with eighth notes in the treble and a whole note in the bass. The eleventh measure (measure 11) has a blue-shaded area with eighth notes in the treble and a whole note in the bass. The twelfth measure (measure 12) has a blue-shaded area with eighth notes in the treble and a whole note in the bass.

13

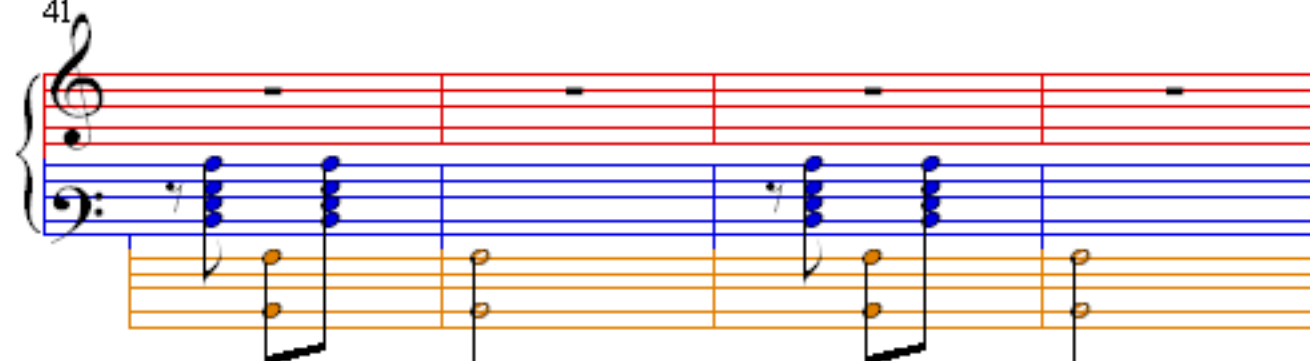
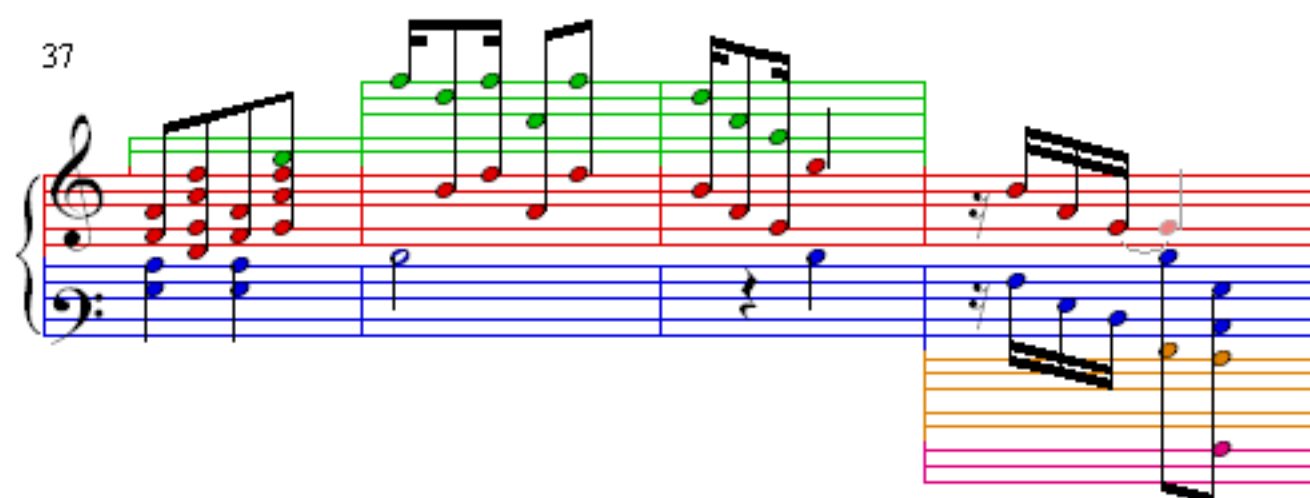
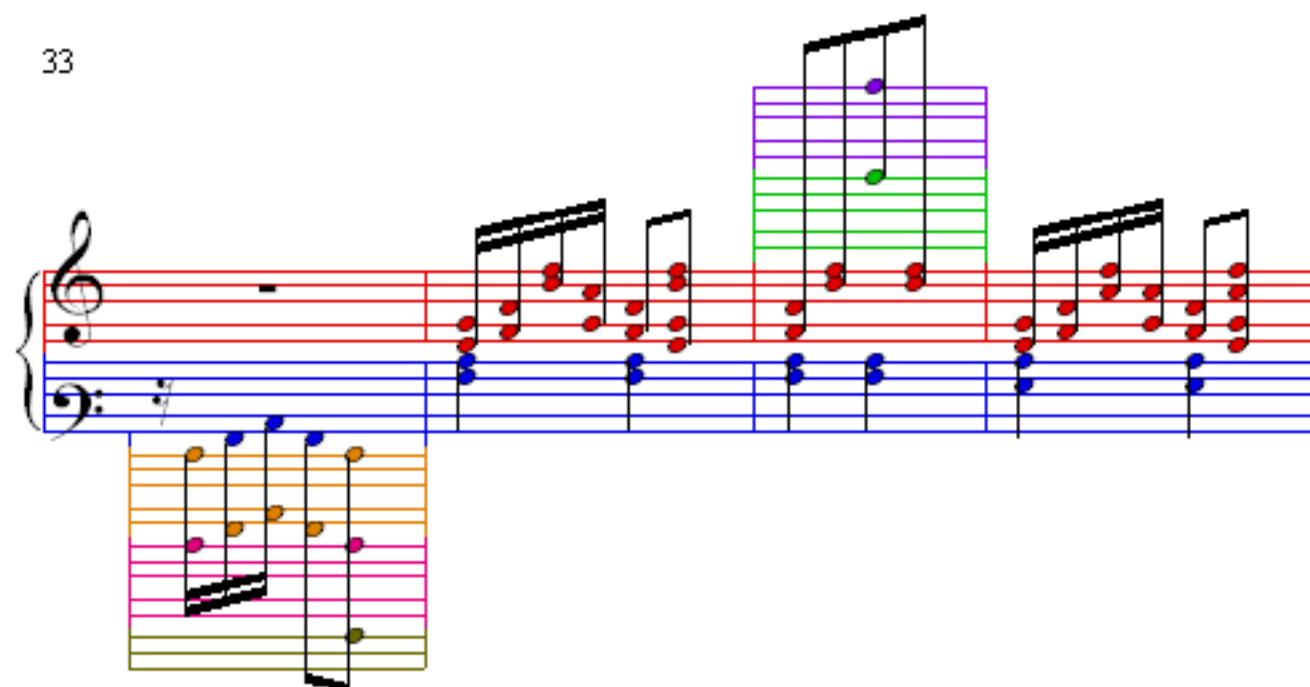
Measures 13-16 of the piece. The treble clef staff has a key signature of one flat (B-flat) and a time signature of 4/4. The bass clef staff has a key signature of one flat (B-flat). The thirteenth measure (measure 13) features a red-shaded area with eighth notes in the treble and a whole note in the bass. The fourteenth measure (measure 14) has a blue-shaded area with eighth notes in the treble and a whole note in the bass. The fifteenth measure (measure 15) has a blue-shaded area with eighth notes in the treble and a whole note in the bass. The sixteenth measure (measure 16) has a blue-shaded area with eighth notes in the treble and a whole note in the bass.

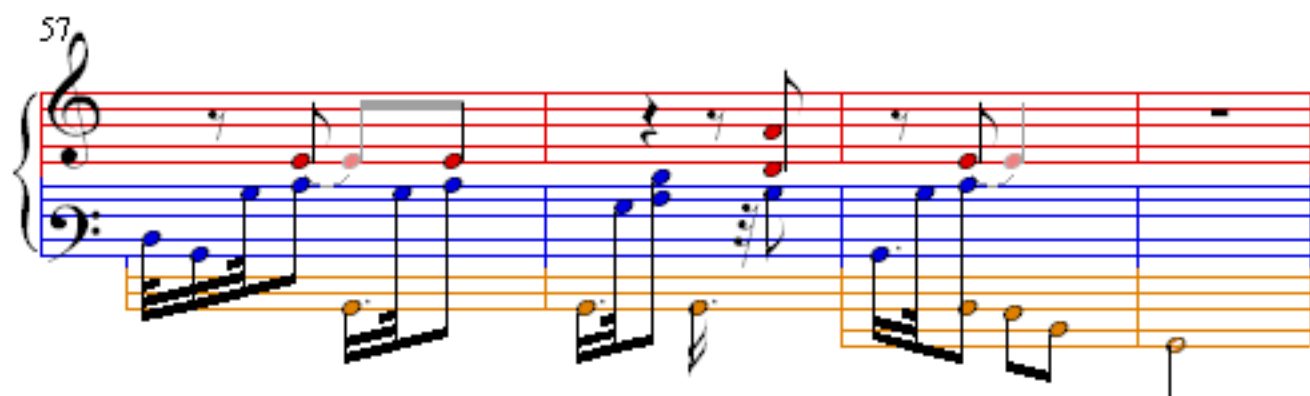
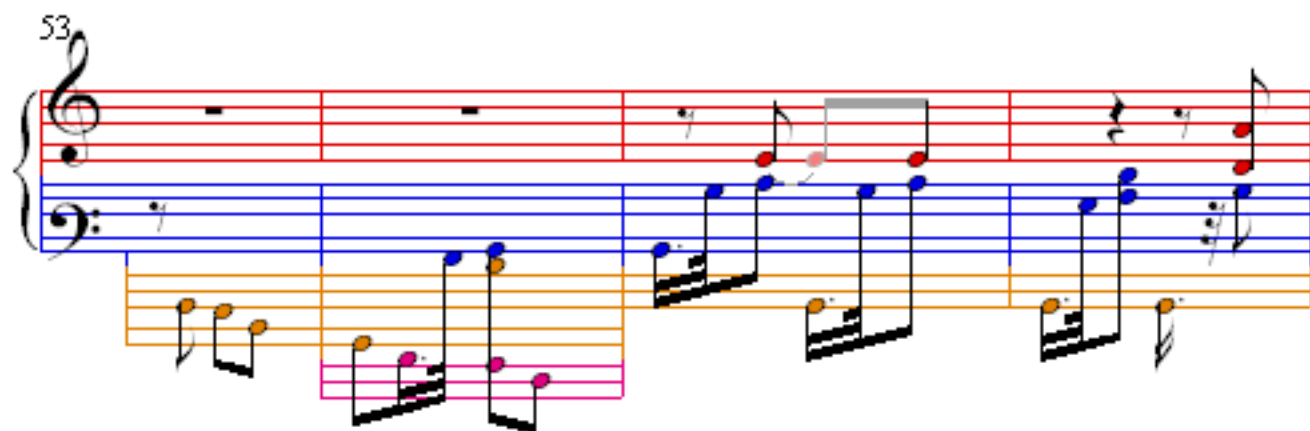
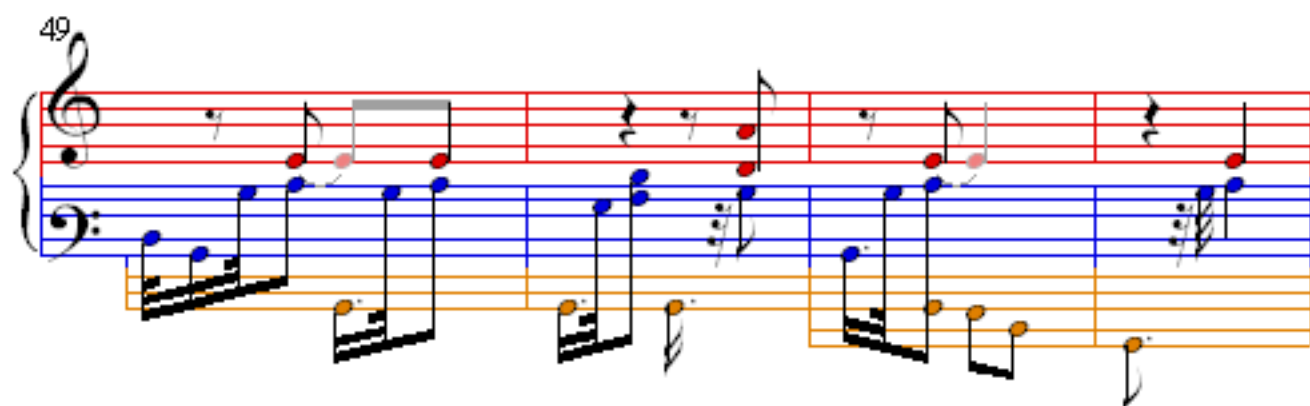
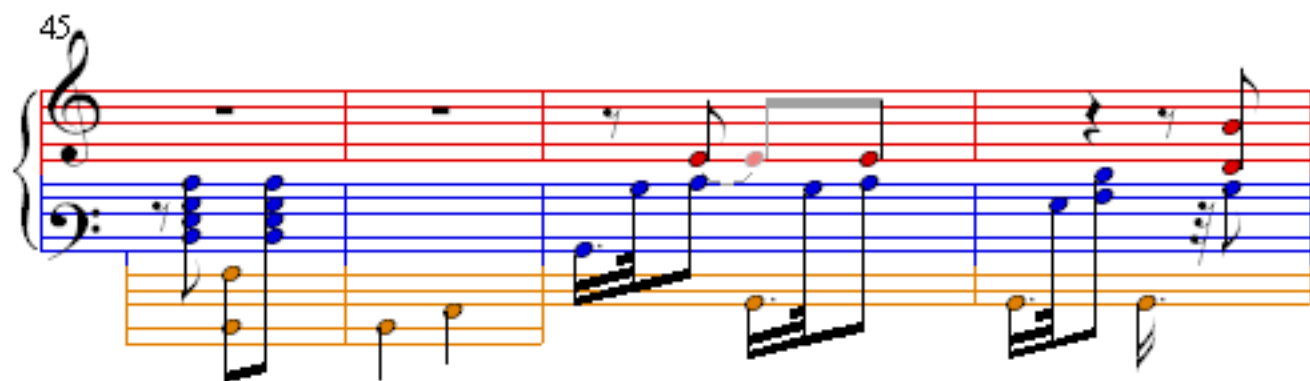
17

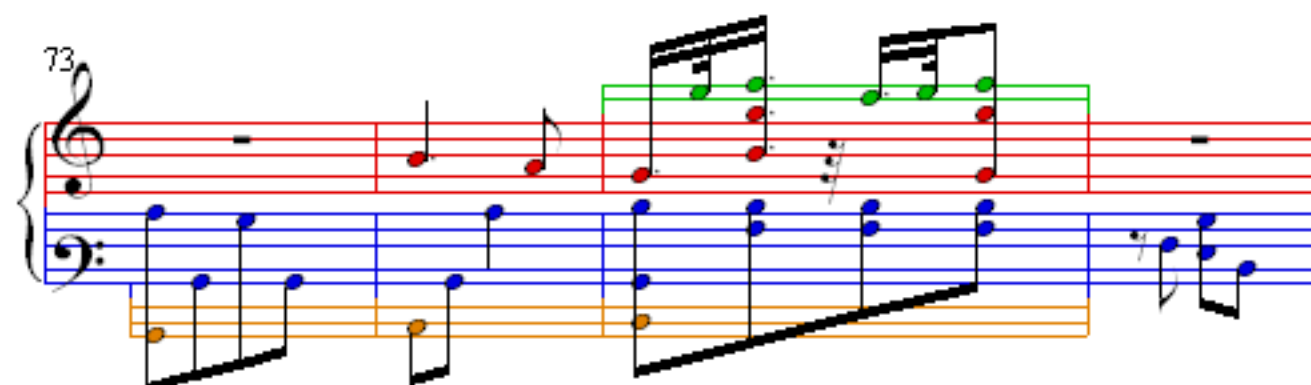
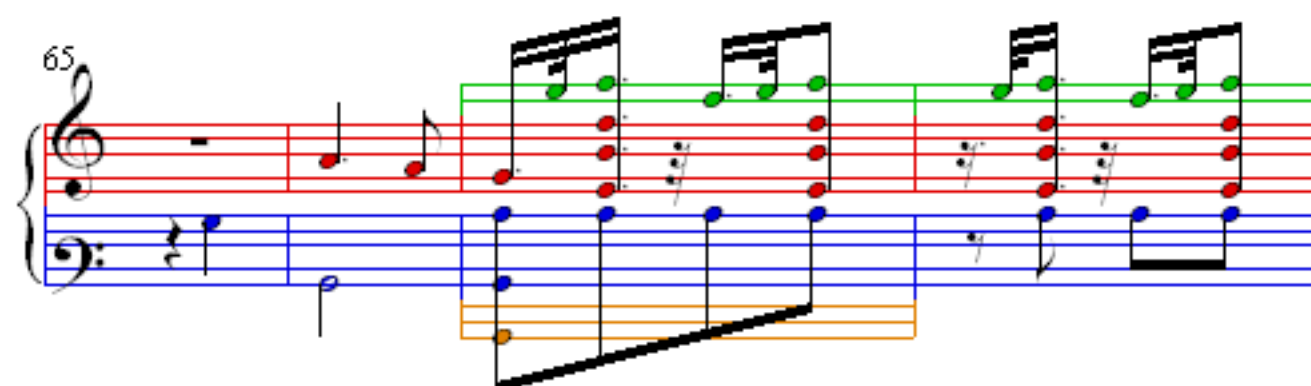
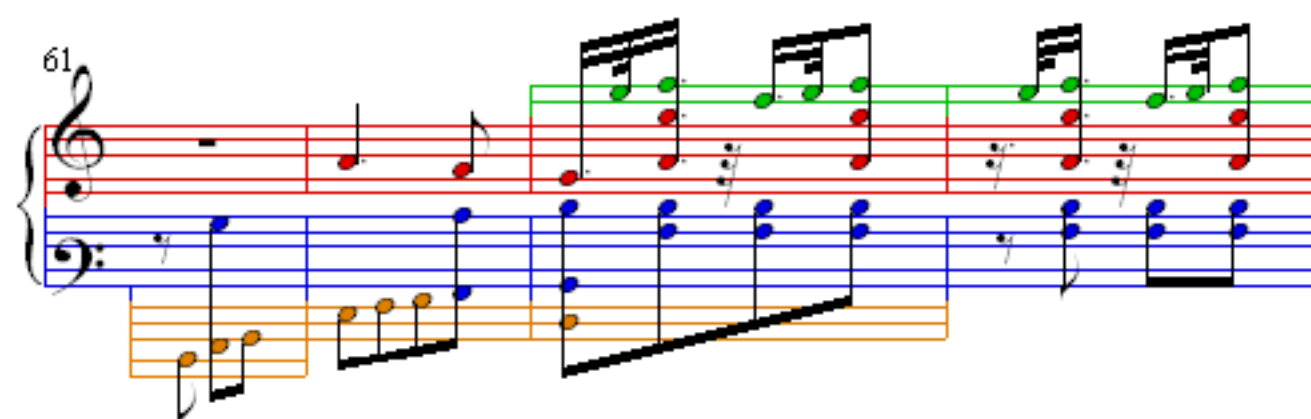
21

25

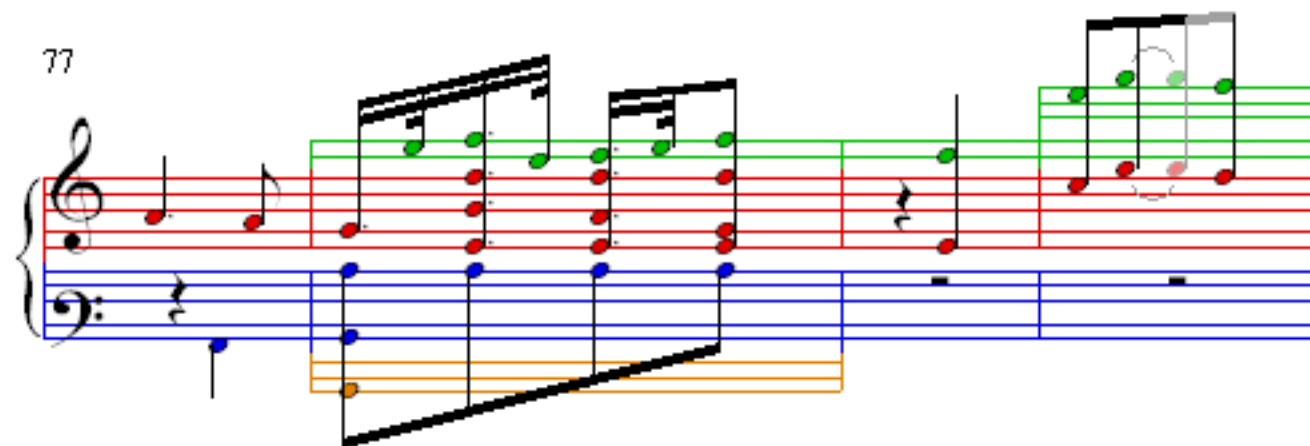
29



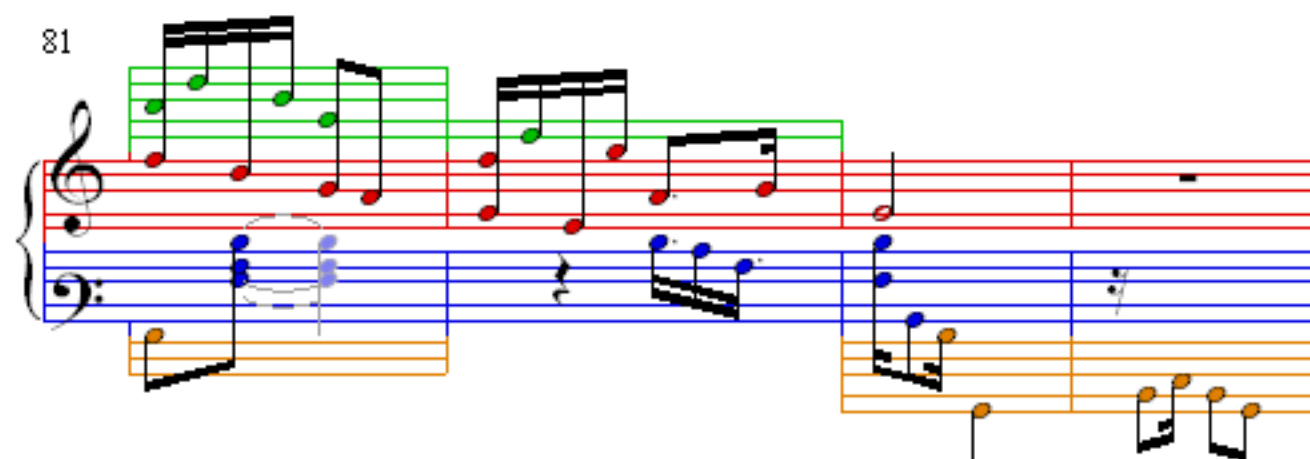




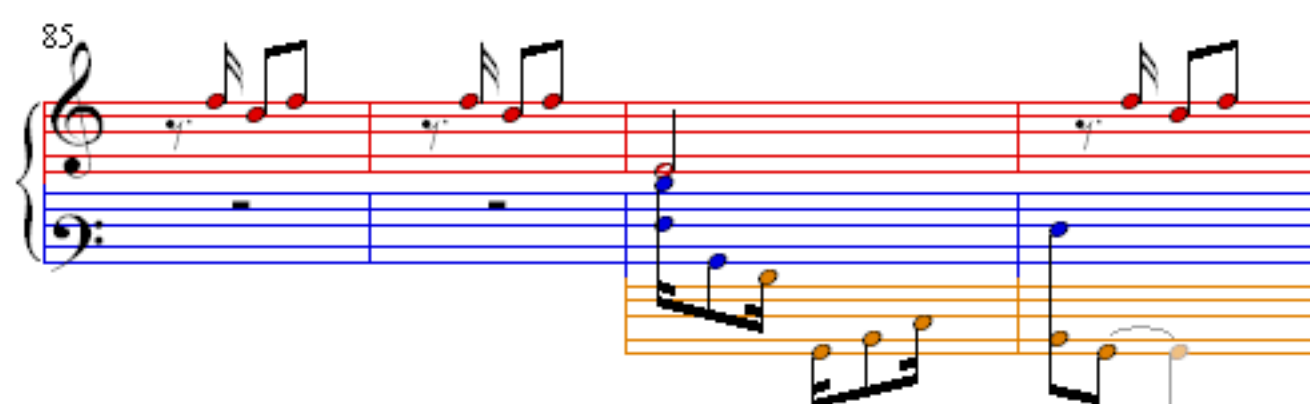
77



81



85



89



93

97

101

105

109

Measures 109-112. Measure 109 has a green background. Measures 110-112 have an orange background. The music is in 2/4 time, featuring a treble and bass staff with various notes and rests.

113

Measures 113-116. Measure 113 has a pink background. Measures 114-115 have a green background. Measure 116 has a purple background. The music is in 2/4 time, featuring a treble and bass staff with various notes and rests.

117

Measures 117-120. Measures 117-119 have a green background. Measure 120 has an orange background. The music is in 2/4 time, featuring a treble and bass staff with various notes and rests.

121

This system contains measures 121 through 124. The notation is for a piano accompaniment in 2/4 time. The right hand (treble clef) is mostly silent, with a few notes in measure 124. The left hand (bass clef) features a rhythmic pattern of eighth notes and chords. The notes are color-coded: blue for the left hand and orange for the right hand. The system is divided into four measures by red bar lines.

125

This system contains measures 125 through 128. The notation continues the piano accompaniment. The right hand (treble clef) has a few notes in measure 128. The left hand (bass clef) features a rhythmic pattern of eighth notes and chords. The notes are color-coded: blue for the left hand, orange for the right hand, and pink for the left hand in measures 126-127. The system is divided into four measures by red bar lines.