

Christmas Fantasia

Bernd Krueger

1

Measures 1-3 of the score. The treble clef staff has a 4/4 time signature and a key signature of one flat. It contains a series of chords and eighth notes, with some notes highlighted in green. The bass clef staff is empty. Below the staves, there are two rows of notes: an orange row and a pink row, each with 12 notes corresponding to the measures.

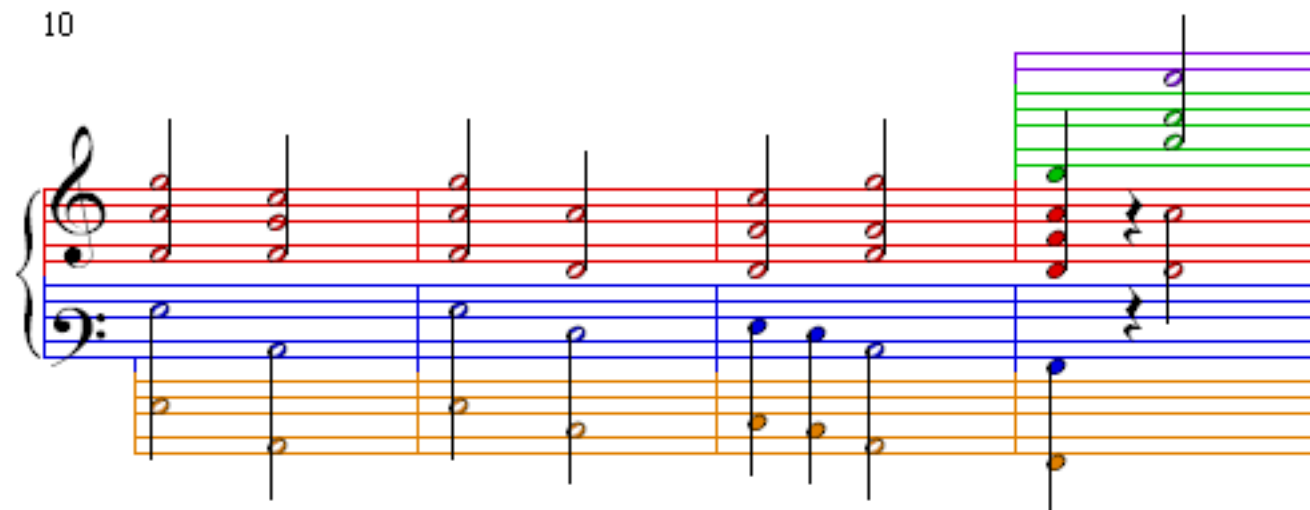
4

Measures 4-6 of the score. The treble clef staff continues the melody with eighth notes and chords, some highlighted in purple and green. The bass clef staff contains rests. Below the staves, the orange and pink rows of notes continue, with the pink row ending in measure 6.

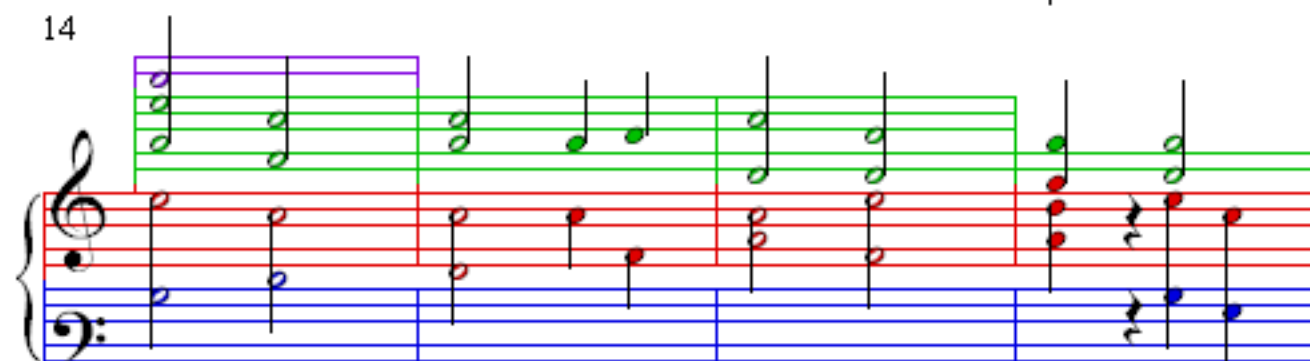
7

Measures 7-9 of the score. The treble clef staff has a melodic line with eighth notes, some highlighted in purple and green. The bass clef staff has a series of eighth notes. Below the staves, the orange and pink rows of notes continue, with the pink row ending in measure 9.

10



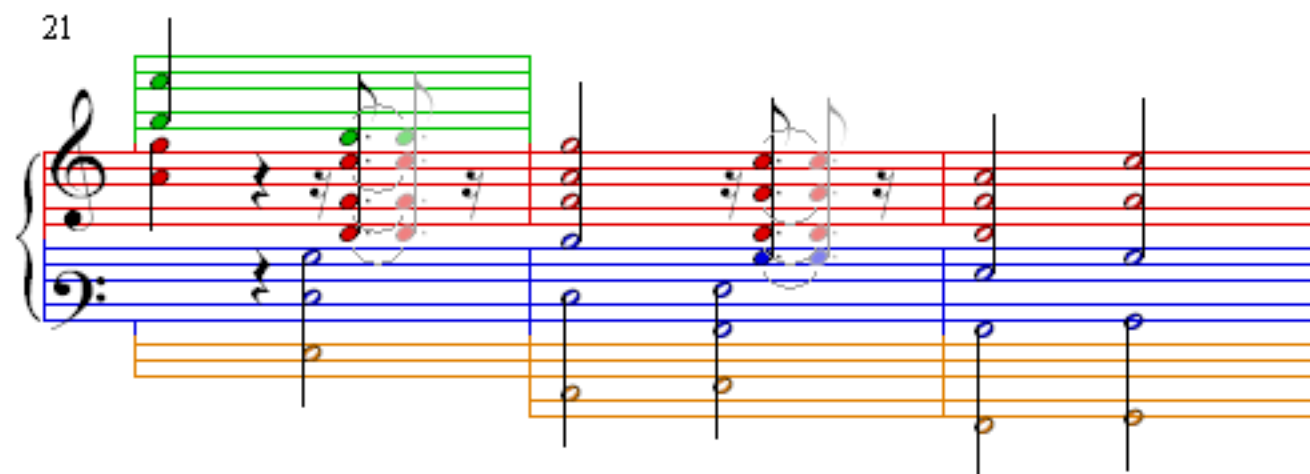
14



18



21



24

Measures 24-26 of the musical score. The system features a grand staff with treble and bass clefs. The treble staff has a red line, and the bass staff has a blue line. The music is written in a key with one flat (B-flat). The melody in the treble staff is primarily red, with some green and purple notes. The bass staff has blue and orange notes. The music is in 2/4 time. The first measure (24) has a treble staff with a red line and a bass staff with a blue line. The second measure (25) has a treble staff with a red line and a bass staff with a blue line. The third measure (26) has a treble staff with a red line and a bass staff with a blue line.

27

Measures 27-29 of the musical score. The system features a grand staff with treble and bass clefs. The treble staff has a red line, and the bass staff has a blue line. The music is written in a key with one flat (B-flat). The melody in the treble staff is primarily red, with some green and purple notes. The bass staff has blue and orange notes. The music is in 2/4 time. The first measure (27) has a treble staff with a red line and a bass staff with a blue line. The second measure (28) has a treble staff with a red line and a bass staff with a blue line. The third measure (29) has a treble staff with a red line and a bass staff with a blue line.

30

Measures 30-32 of the musical score. The system features a grand staff with treble and bass clefs. The treble staff has a red line, and the bass staff has a blue line. The music is written in a key with one flat (B-flat). The melody in the treble staff is primarily red, with some green and purple notes. The bass staff has blue and orange notes. The music is in 2/4 time. The first measure (30) has a treble staff with a red line and a bass staff with a blue line. The second measure (31) has a treble staff with a red line and a bass staff with a blue line. The third measure (32) has a treble staff with a red line and a bass staff with a blue line.

33

Measures 33-35 of the musical score. The system features a grand staff with treble and bass clefs. The treble staff has a red line, and the bass staff has a blue line. The music is written in a key with one flat (B-flat). The melody in the treble staff is primarily red, with some green and purple notes. The bass staff has blue and orange notes. The music is in 2/4 time. The first measure (33) has a treble staff with a red line and a bass staff with a blue line. The second measure (34) has a treble staff with a red line and a bass staff with a blue line. The third measure (35) has a treble staff with a red line and a bass staff with a blue line.

36

39

42

45

A musical score for a piano piece titled 'Christmas Fanciness'. The score is presented in four systems, each consisting of a grand staff (treble and bass clefs). The music is written in a key with one flat (B-flat major or D minor) and a 3/4 time signature. The notation includes various musical elements such as eighth and sixteenth notes, rests, and dynamic markings like 'p' (piano) and 'f' (forte). The score is color-coded: the first system (measures 36-38) has red notes in the treble and blue in the bass; the second system (measures 39-41) has green notes in the treble and blue in the bass; the third system (measures 42-44) has green notes in the treble and blue in the bass; and the fourth system (measures 45-47) has purple notes in the treble and blue in the bass. The piece concludes with a double bar line at the end of the fourth system.

Measures 48-50 of the musical score. The system consists of a grand staff with a treble and bass clef. The treble staff has a green background and contains a melody of eighth notes. The bass staff has a blue background and contains a melody of eighth notes. The music is in 3/4 time, with a key signature of one flat (B-flat).

Measures 51-53 of the musical score. The system consists of a grand staff with a treble and bass clef. The treble staff has a green background and contains a melody of eighth notes. The bass staff has a blue background and contains a melody of eighth notes. The music is in 3/4 time, with a key signature of one flat (B-flat).

Measures 54-56 of the musical score. The system consists of a grand staff with a treble and bass clef. The treble staff has a green background and contains a melody of eighth notes. The bass staff has a blue background and contains a melody of eighth notes. The music is in 3/4 time, with a key signature of one flat (B-flat).

Measures 57-59 of the musical score. The system consists of a grand staff with a treble and bass clef. The treble staff has a green background and contains a melody of eighth notes. The bass staff has a blue background and contains a melody of eighth notes. The music is in 3/4 time, with a key signature of one flat (B-flat).

60

63

66

69

72

Measures 72-74 of the musical score. The system consists of a grand staff (treble and bass clefs) and two additional staves below. The treble staff features a melodic line with eighth and sixteenth notes, primarily in green and purple. The bass staff provides harmonic support with chords and single notes, mostly in blue and red. The two lower staves are empty, with only a few notes visible in the first measure, colored orange and pink.

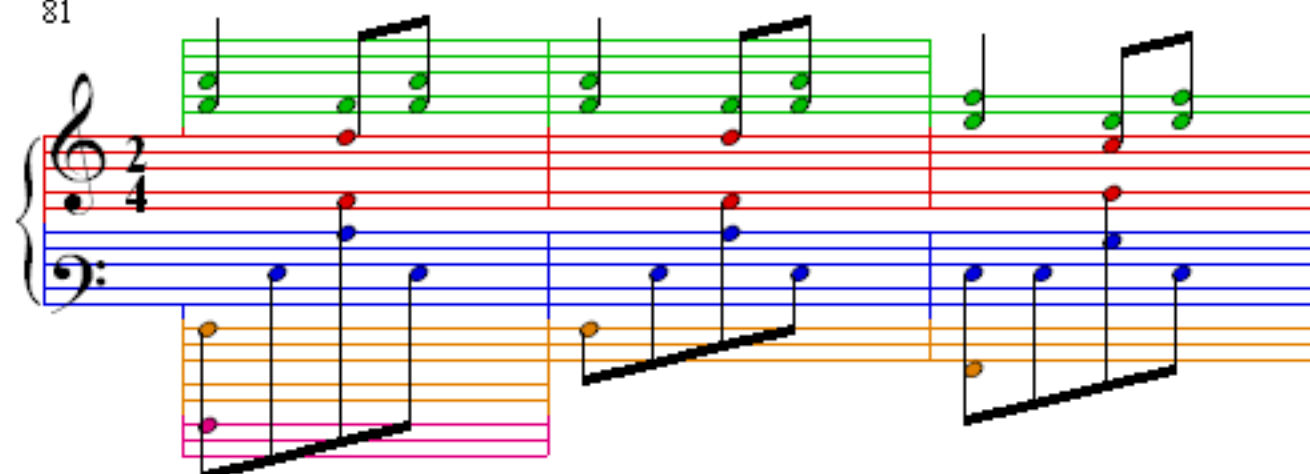
75

Measures 75-77 of the musical score. The treble staff continues the melodic development with more complex rhythmic patterns. The bass staff maintains the harmonic foundation with sustained chords and moving lines. The lower staves remain empty, with a few notes appearing in the first measure of the system, colored orange and pink.

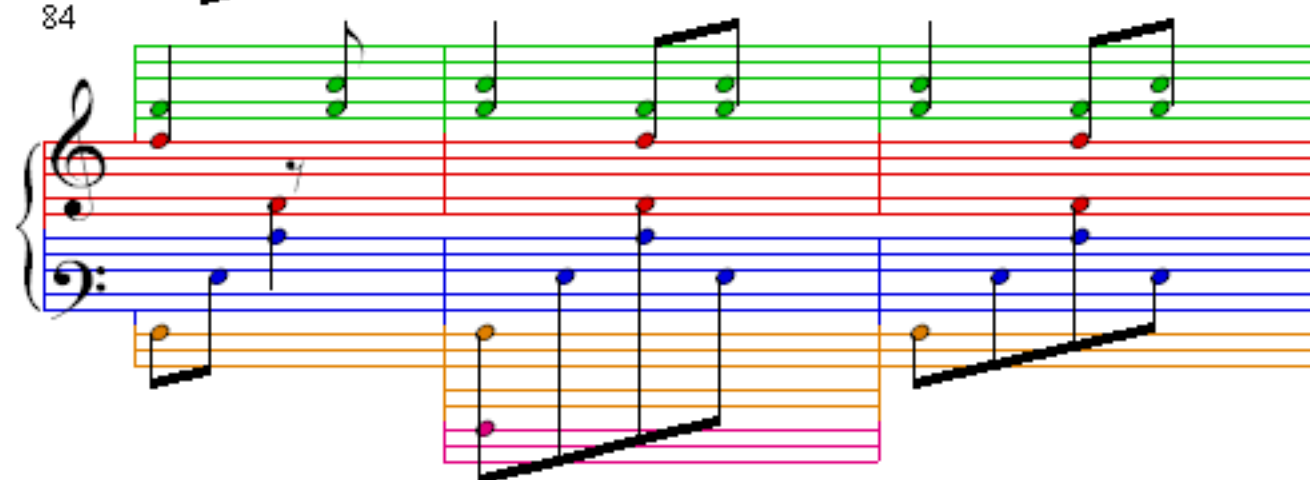
78

Measures 78-80 of the musical score. The treble staff shows a continuation of the melodic theme. The bass staff features more active harmonic movement. The lower staves are empty, with a few notes visible in the first measure, colored orange and pink.

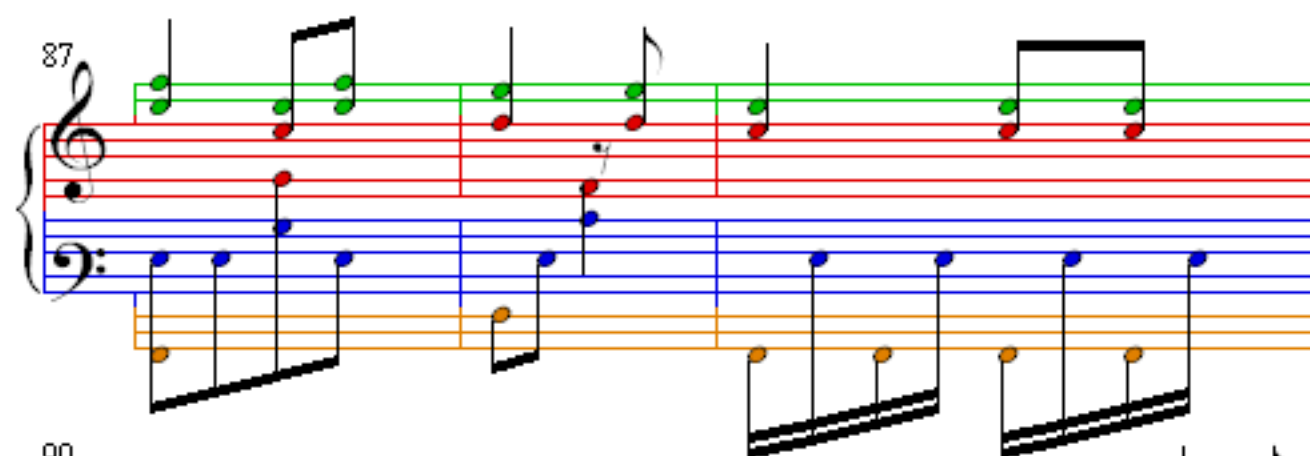
81



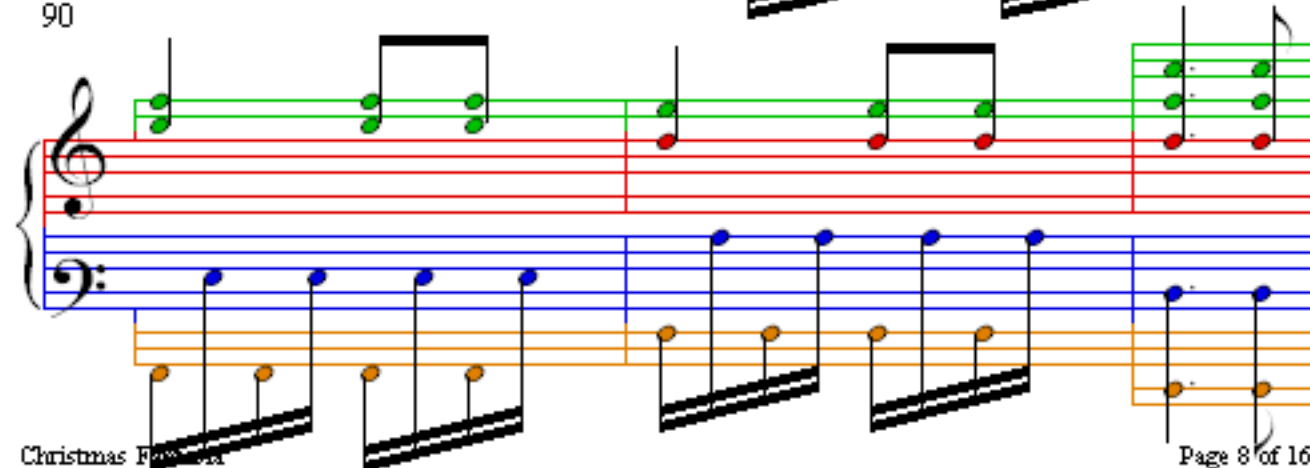
84



87



90



93

96

99

102

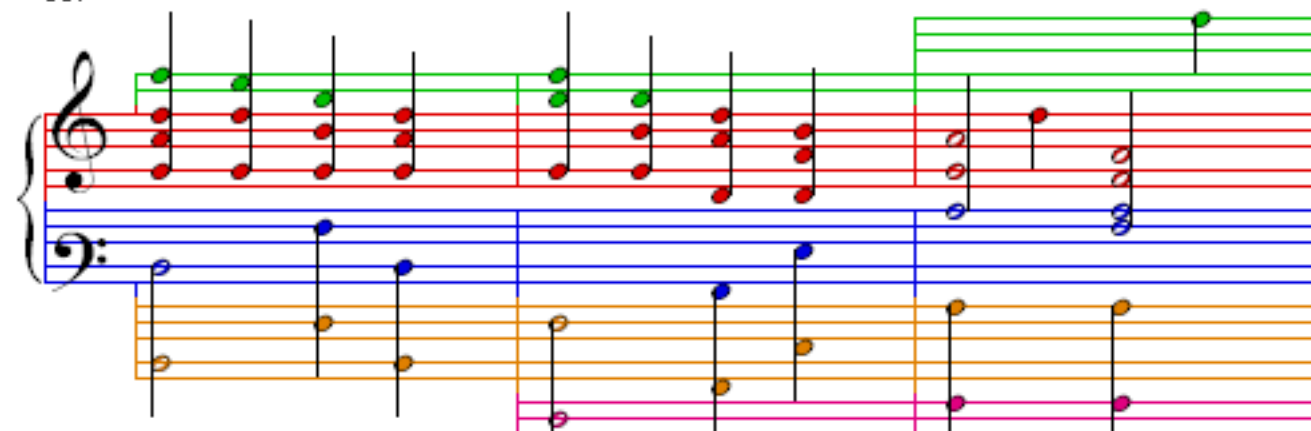
105

108

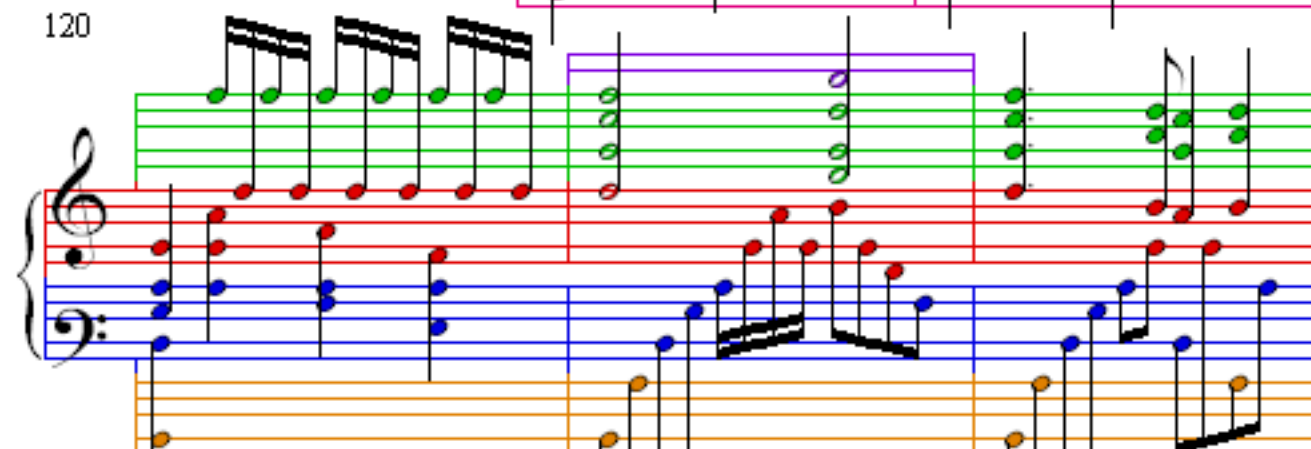
111

114

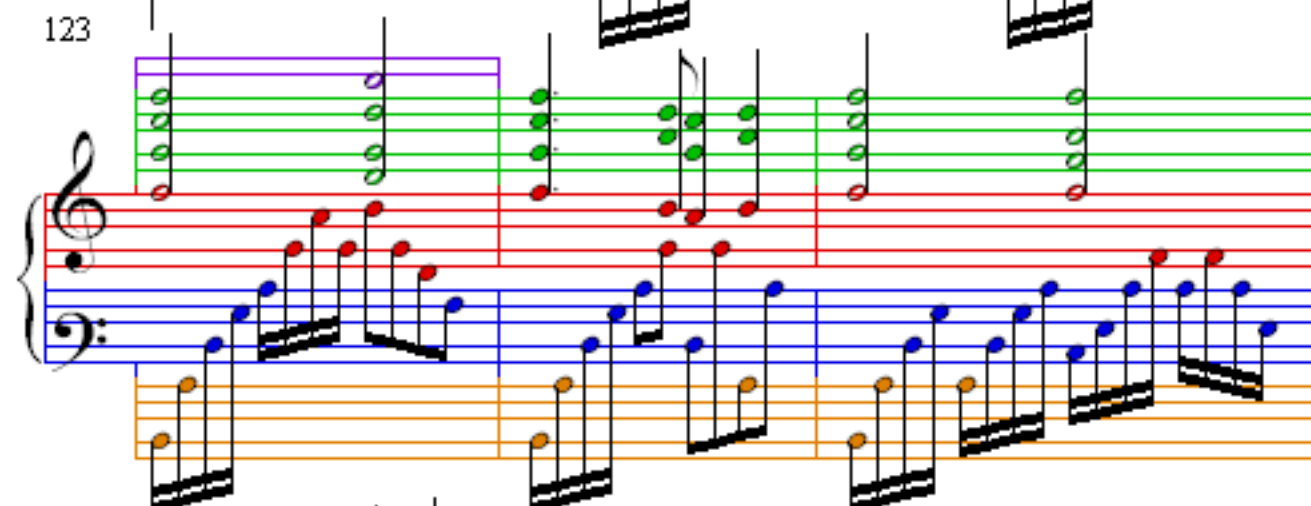
117



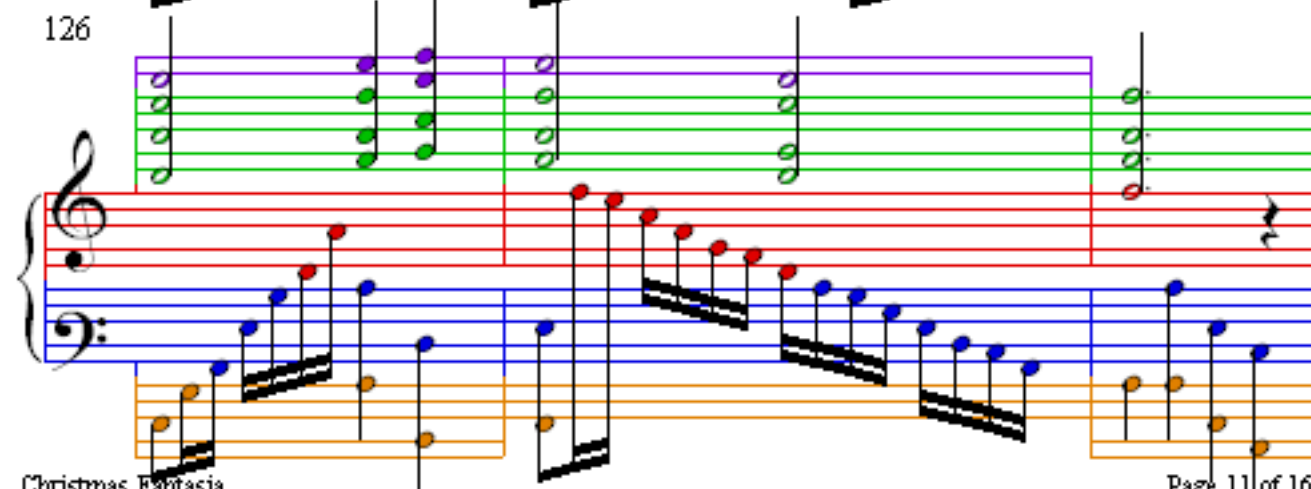
120



123



126



129

Measures 129-131 of the musical score. The treble clef staff features a continuous eighth-note melody in red. The bass clef staff has a steady eighth-note accompaniment in blue. A green box highlights measures 130 and 131, where the melody continues. Below the piano staves, there are two additional staves: an orange one with a single note in each measure and a pink one with a single note in each measure.

132

Measures 132-134 of the musical score. The treble clef staff shows a melody in red with some notes in green. The bass clef staff continues with a blue eighth-note accompaniment. A green box highlights measures 132 and 133. Below the piano staves, the orange staff continues with single notes, and the pink staff has a single note in measure 134.

135

Measures 135-140 of the musical score. The treble clef staff features a melody in red with some notes in green. The bass clef staff has a steady eighth-note accompaniment in blue. A green box highlights measures 135 and 136. Below the piano staves, the orange staff continues with single notes, and the pink staff has a single note in measure 135. At the bottom of the page, there are two rows of blue brackets, each containing the number '3' repeated eight times, indicating triplet markings for the bass clef accompaniment.

138

Measures 138-140 of the musical score. The system consists of three staves. The top staff (treble clef) has a green background and contains a melody of eighth notes. The middle staff (bass clef) has a blue background and contains a melody of eighth notes. The bottom staff (bass clef) has an orange background and contains a melody of eighth notes. The music is in 4/4 time.

141

Measures 141-143 of the musical score. The system consists of three staves. The top staff (treble clef) has a red background and contains a melody of eighth notes. The middle staff (bass clef) has a blue background and contains a melody of eighth notes. The bottom staff (bass clef) has an orange background and contains a melody of eighth notes. The music is in 4/4 time. Blue brackets with the number '3' indicate triplets in measures 142 and 143.

144

Measures 144-146 of the musical score. The system consists of three staves. The top staff (treble clef) has a green background and contains a melody of eighth notes. The middle staff (bass clef) has a blue background and contains a melody of eighth notes. The bottom staff (bass clef) has an orange background and contains a melody of eighth notes. The music is in 4/4 time. A double bar line is present at the end of measure 144.

146

Measures 146 and 147 of the musical score. The treble clef staff features a melody with green and red notes, while the bass clef staff has a blue melody. The right hand includes a pink-shaded area in measure 147. The left hand features an orange-shaded area in measure 146 and a pink-shaded area in measure 147.

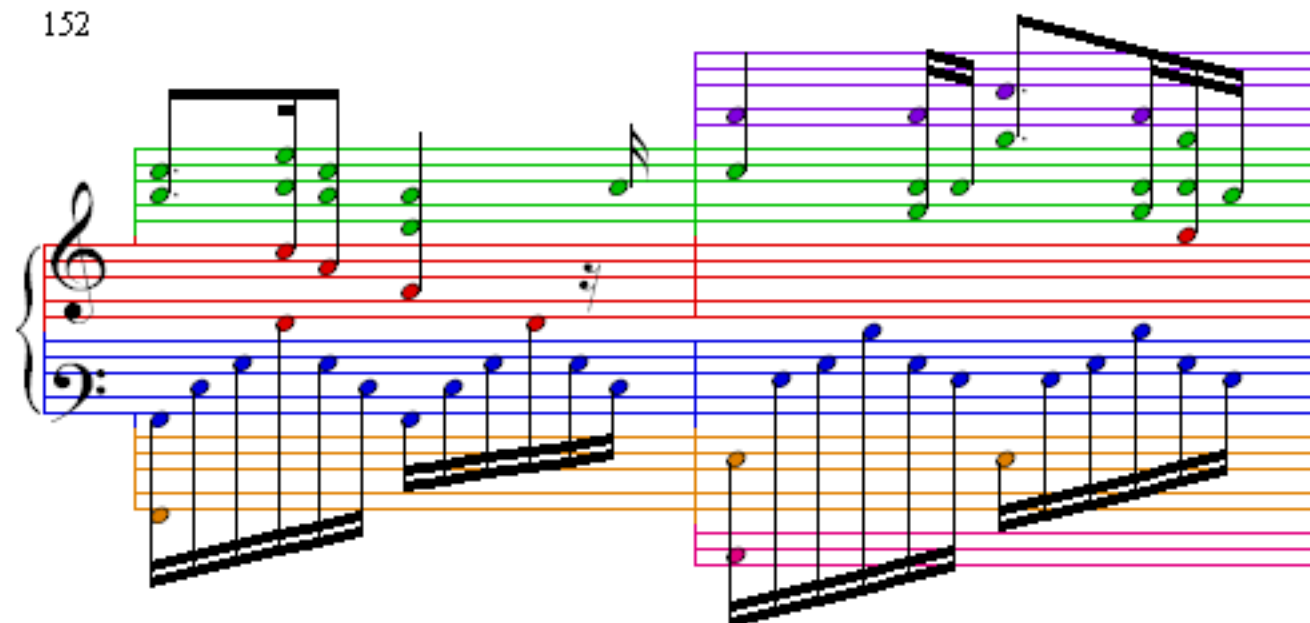
148

Measures 148 and 149 of the musical score. The treble clef staff features a melody with green and red notes, while the bass clef staff has a blue melody. The right hand includes a pink-shaded area in measure 149. The left hand features an orange-shaded area in measure 148 and a pink-shaded area in measure 149.

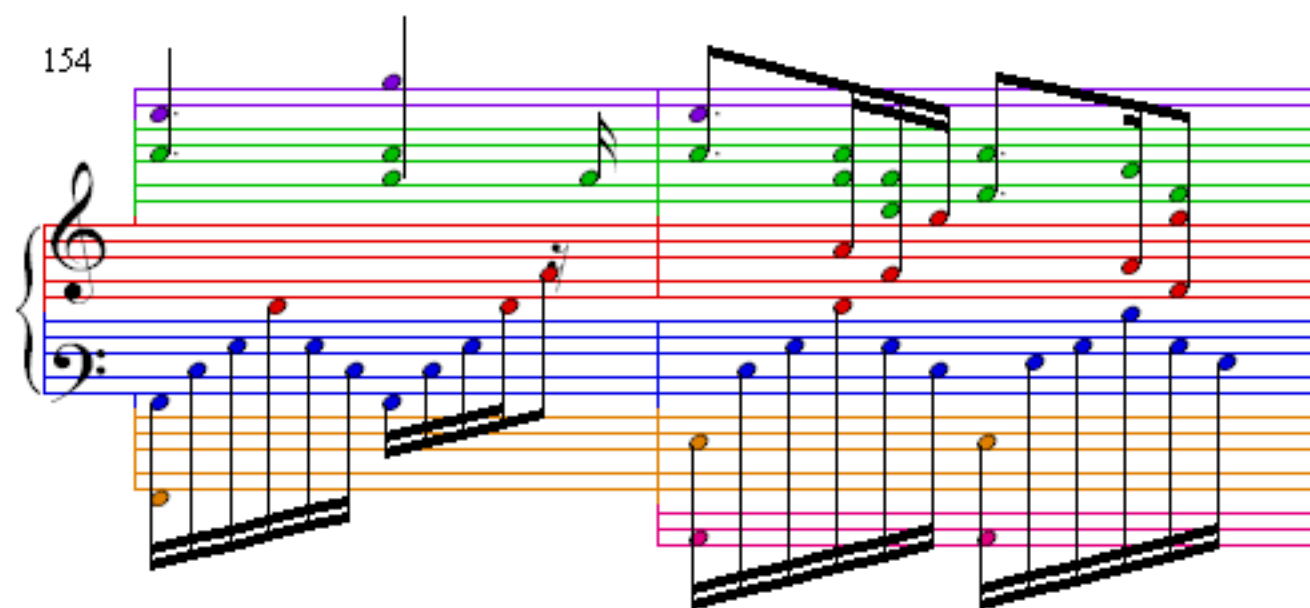
150

Measures 150 and 151 of the musical score. The treble clef staff features a melody with green and red notes, while the bass clef staff has a blue melody. The right hand includes a pink-shaded area in measure 151. The left hand features an orange-shaded area in measure 150 and a pink-shaded area in measure 151.

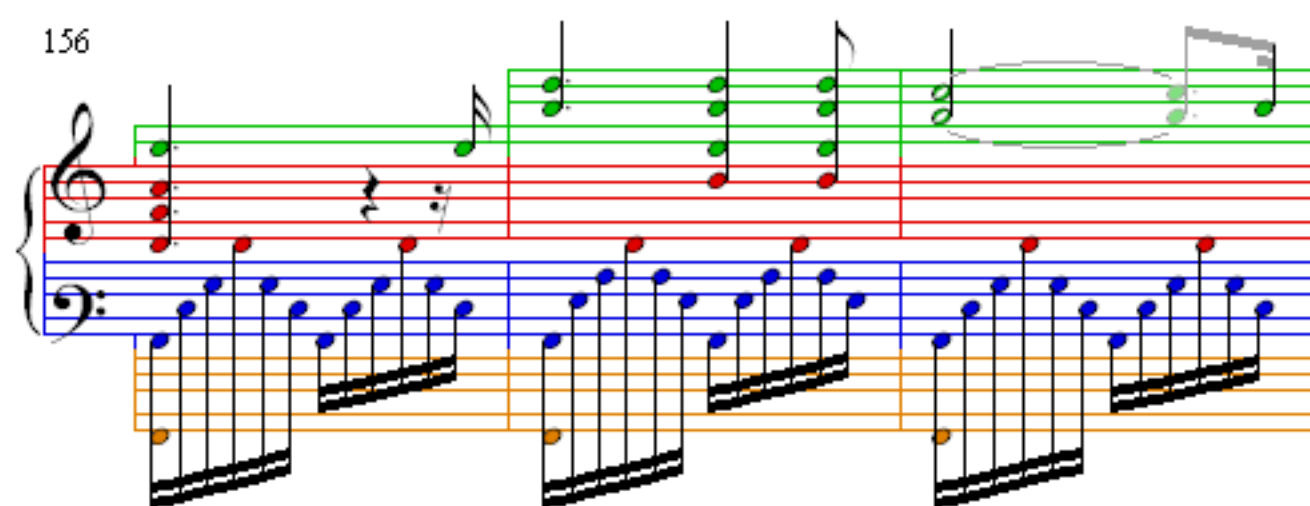
152



154



156



Measures 159-161 of the musical score. The treble clef staff features chords in purple, green, and red. The bass clef staff features a blue melodic line with eighth notes and a double bass line in orange. A 4/4 time signature is present in measure 160.

Measures 162-164 of the musical score. The treble clef staff features chords in green and red. The bass clef staff features a blue melodic line with eighth notes and a double bass line in orange.

Measures 165-167 of the musical score. The treble clef staff features chords in purple, green, and red. The bass clef staff features a blue melodic line with eighth notes and a double bass line in orange. A pink staff is visible at the bottom right of the system.