

Cantabile

With Quiet Melodic Accompaniment

Heller

1

Measures 1-3 of the piece. The treble clef staff has a key signature of one flat (B-flat) and a 3/4 time signature. The bass clef staff has a key signature of one flat (B-flat). The melody in the treble clef consists of quarter notes: G4, A4, Bb4, A4, G4, F4, E4, D4. The accompaniment in the bass clef consists of eighth notes: G3, A3, Bb3, A3, G3, F3, E3, D3.

4

Measures 4-6 of the piece. The treble clef staff has a key signature of one flat (B-flat) and a 3/4 time signature. The bass clef staff has a key signature of one flat (B-flat). The melody in the treble clef consists of quarter notes: G4, A4, Bb4, A4, G4, F4, E4, D4. The accompaniment in the bass clef consists of eighth notes: G3, A3, Bb3, A3, G3, F3, E3, D3. A dynamic marking *p* (piano) is present in measure 5.

7

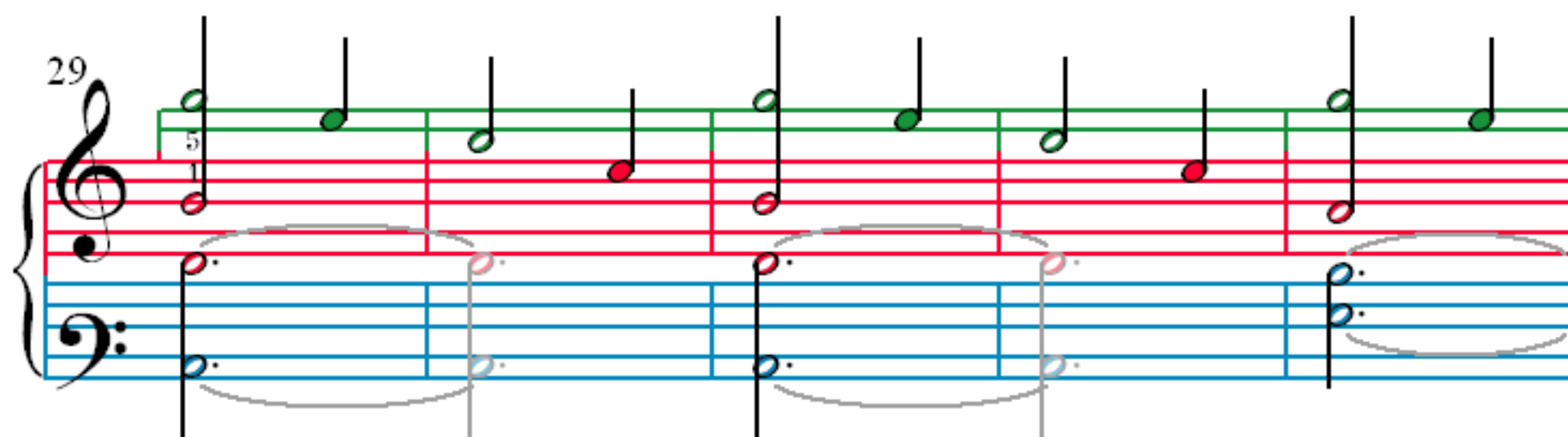
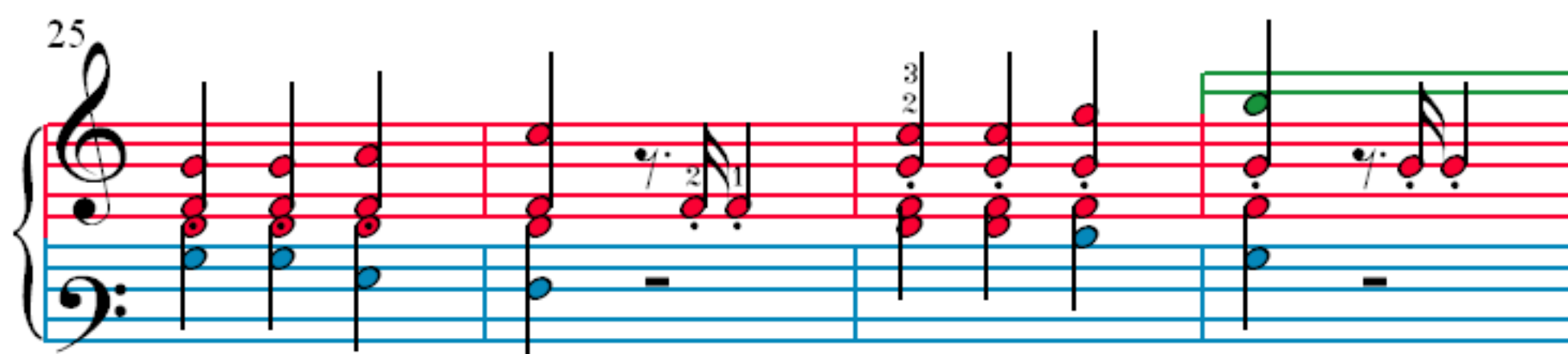
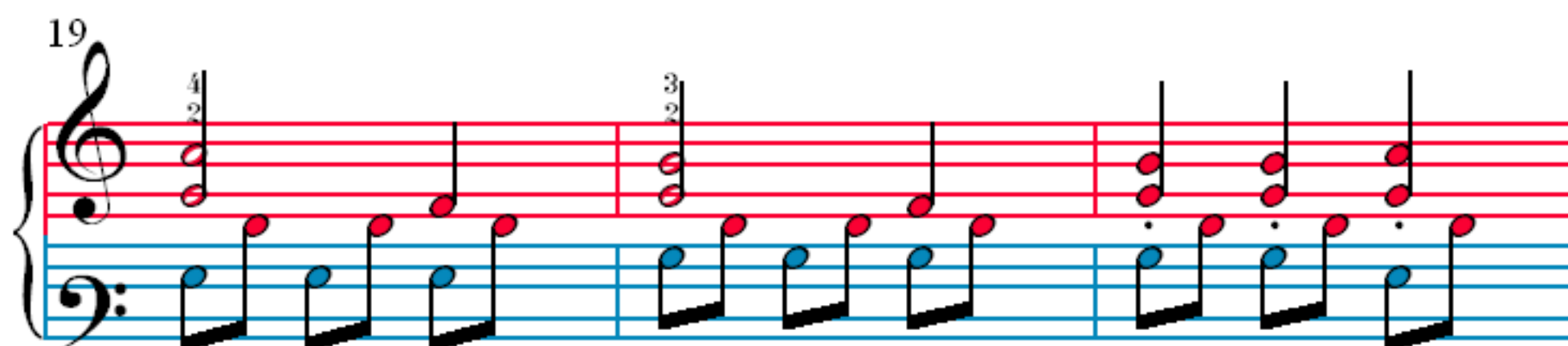
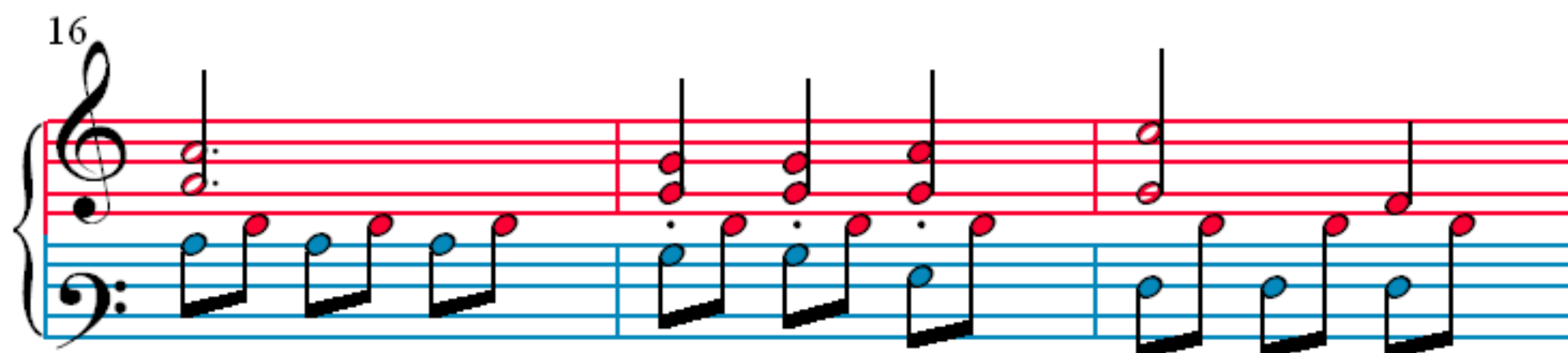
Measures 7-9 of the piece. The treble clef staff has a key signature of one flat (B-flat) and a 3/4 time signature. The bass clef staff has a key signature of one flat (B-flat). The melody in the treble clef consists of quarter notes: G4, A4, Bb4, A4, G4, F4, E4, D4. The accompaniment in the bass clef consists of eighth notes: G3, A3, Bb3, A3, G3, F3, E3, D3. A dynamic marking *p* (piano) is present in measure 7.

10

Measures 10-12 of the piece. The treble clef staff has a key signature of one flat (B-flat) and a 3/4 time signature. The bass clef staff has a key signature of one flat (B-flat). The melody in the treble clef consists of quarter notes: G4, A4, Bb4, A4, G4, F4, E4, D4. The accompaniment in the bass clef consists of eighth notes: G3, A3, Bb3, A3, G3, F3, E3, D3.

13

Measures 13-15 of the piece. The treble clef staff has a key signature of one flat (B-flat) and a 3/4 time signature. The bass clef staff has a key signature of one flat (B-flat). The melody in the treble clef consists of quarter notes: G4, A4, Bb4, A4, G4, F4, E4, D4. The accompaniment in the bass clef consists of eighth notes: G3, A3, Bb3, A3, G3, F3, E3, D3.



34

34 35 36 37

38

38 39 40

41

41 42 43 44

45

45 46 47 48

49

49 50 51 52

53

Measures 53-55 of a musical score. Measure 53 starts with a piano (*p*) dynamic. The right hand has a triplet of eighth notes, and the left hand has a triplet of eighth notes. Measures 54 and 55 continue the triplet patterns. A green box highlights the right hand in measure 54, and a grey oval highlights the right hand in measure 55. A finger number '3' is written above the right hand in measure 55.

56

Measures 56-58 of a musical score. Measure 56 has a green box around the right hand. Measure 57 has a finger number '5' above the right hand. Measure 58 has a finger number '2' above the right hand. The left hand has a triplet of eighth notes in measure 58, highlighted by an orange box.

60

Measures 60-62 of a musical score. Measure 60 has a finger number '2' above the right hand. Measure 61 has a finger number '2' above the right hand. Measure 62 has a finger number '2' above the right hand. The left hand has a triplet of eighth notes in measure 62, highlighted by an orange box.

63

Measures 63-65 of a musical score. Measure 63 has a finger number '3' above the right hand. Measure 64 has a finger number '3' above the right hand. Measure 65 has a forte (*sf*) dynamic and a green box around the right hand. The left hand has a triplet of eighth notes in measure 65, highlighted by an orange box.

66

Measures 66-68 of a musical score. Measure 66 has a green box around the right hand. Measure 67 has a finger number '5' above the right hand. Measure 68 has a finger number '4' above the right hand. The left hand has a triplet of eighth notes in measure 68, highlighted by an orange box.