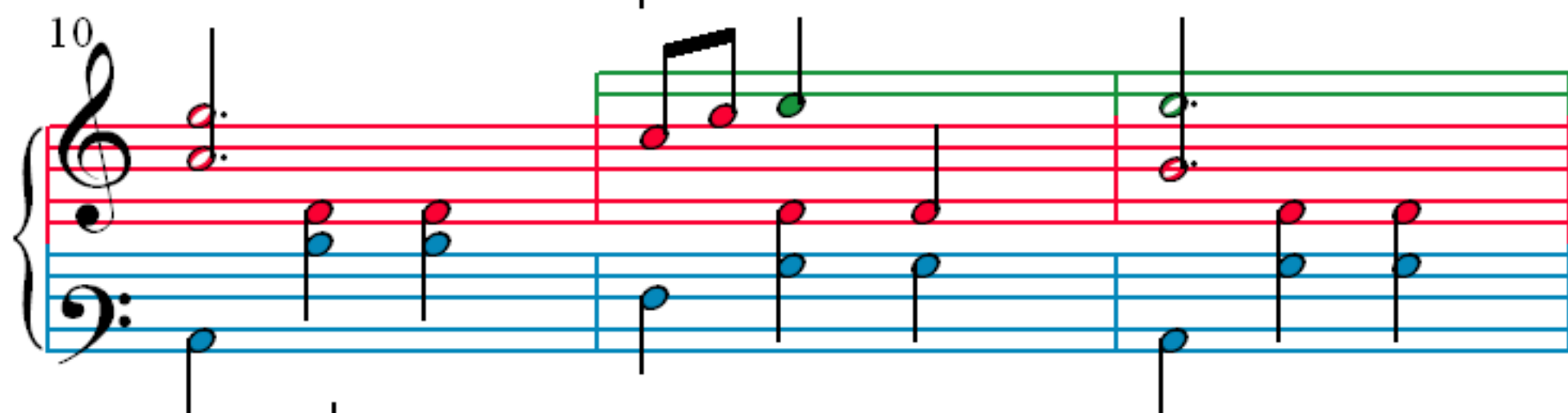
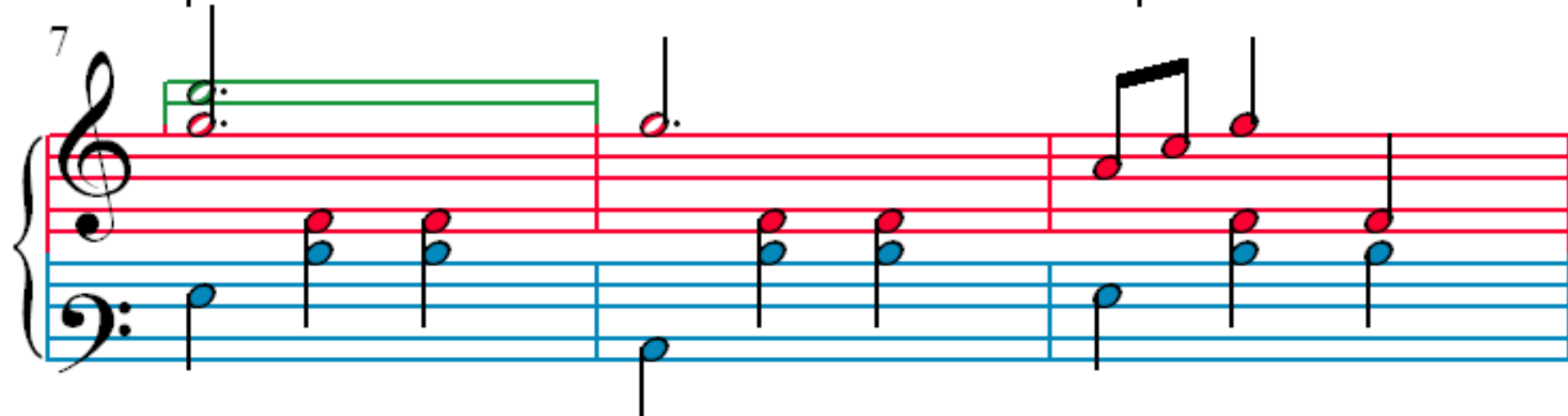
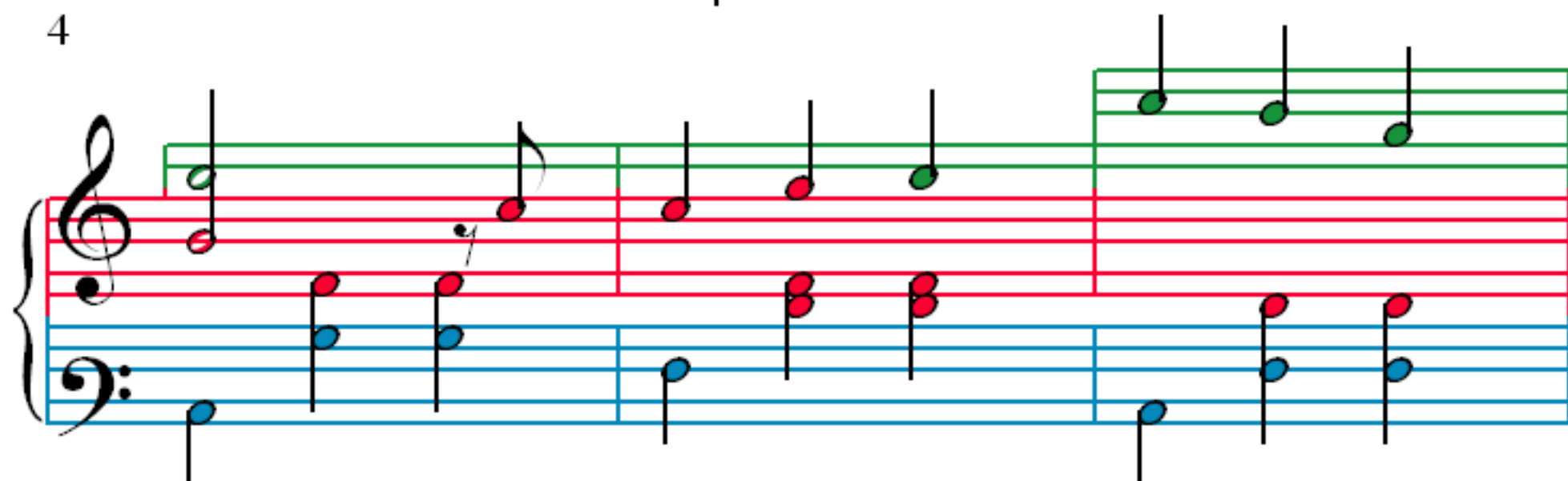
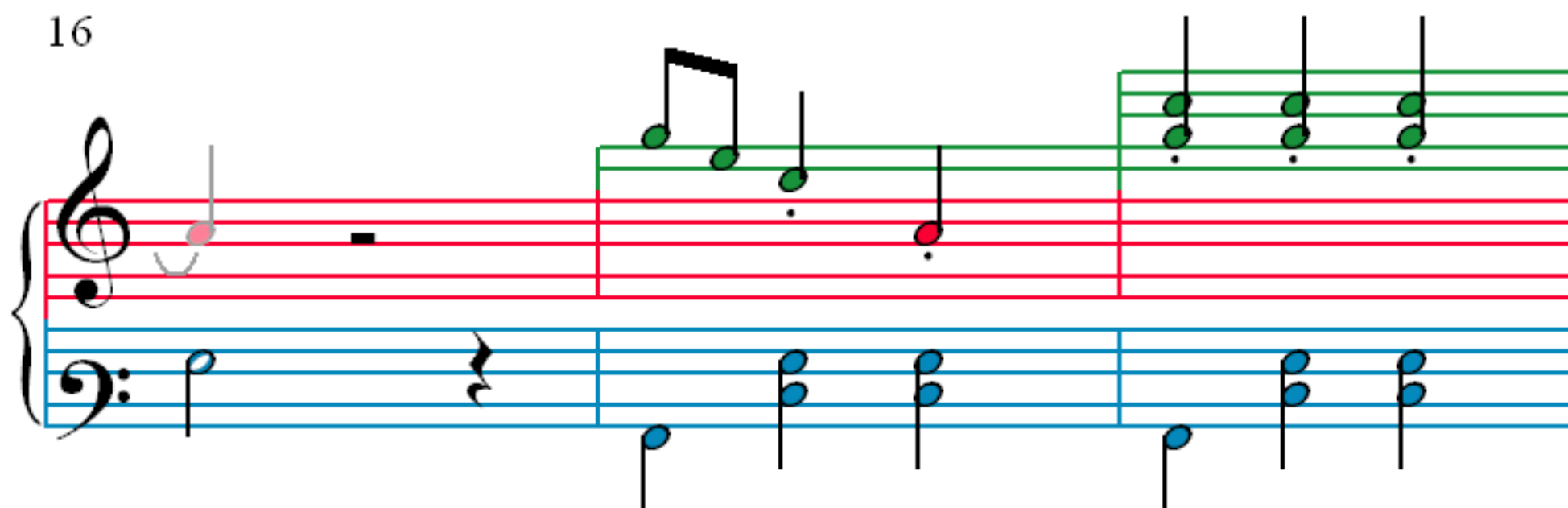


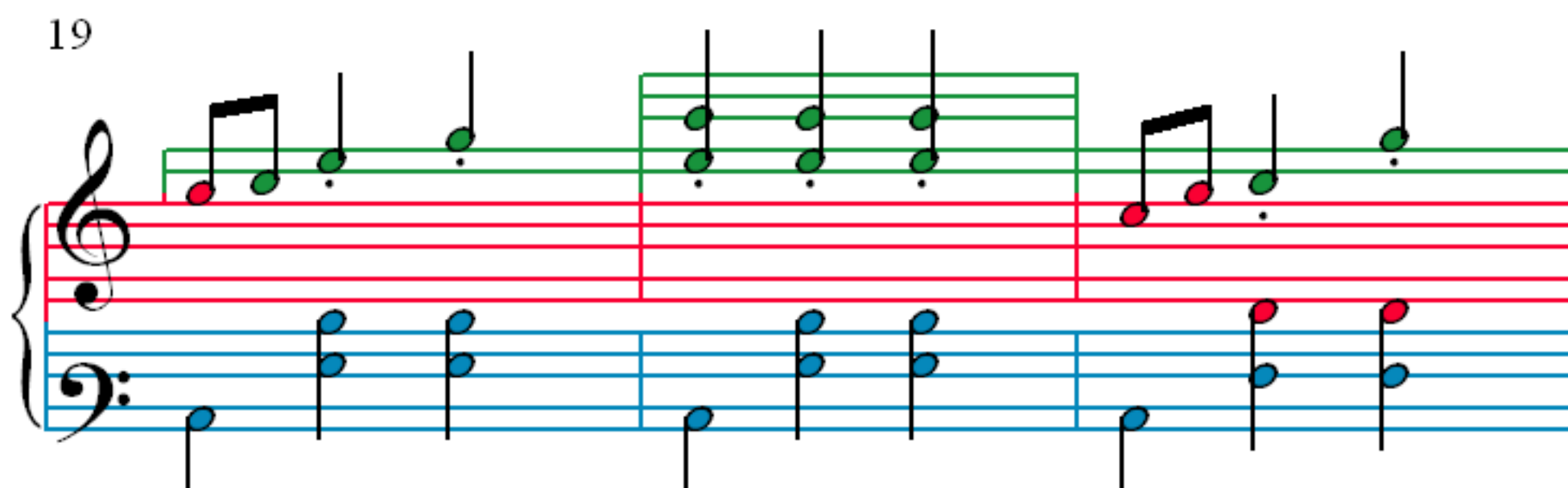
Adele's laughing song-Die Fledermaus



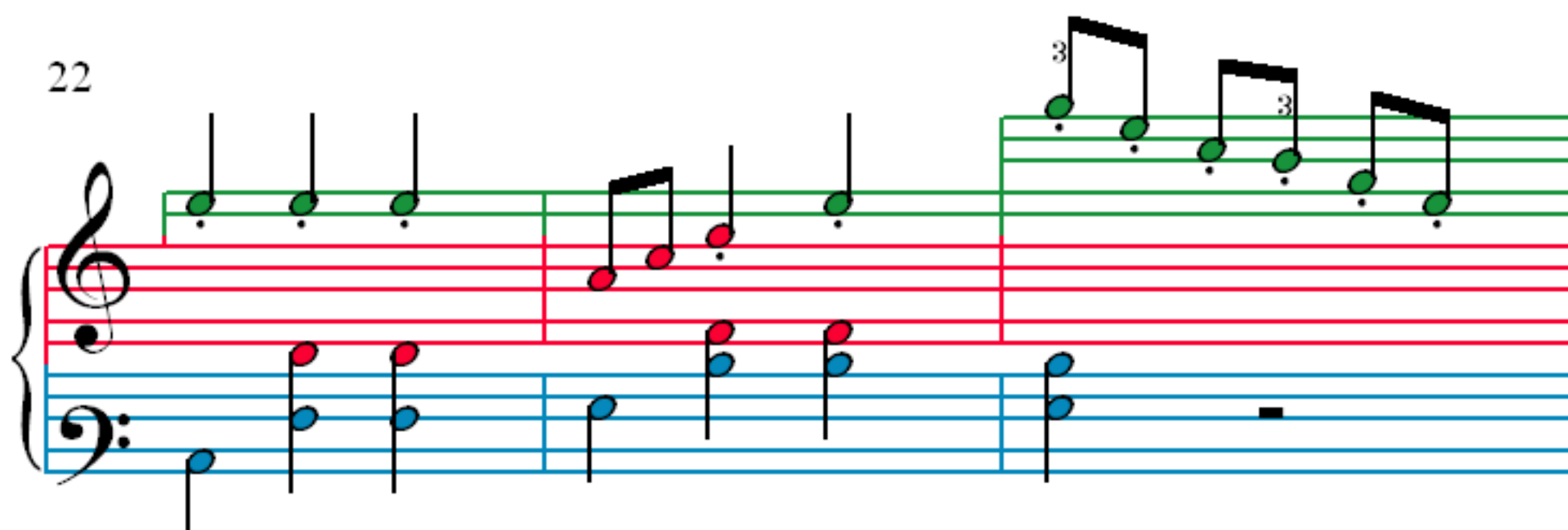
16



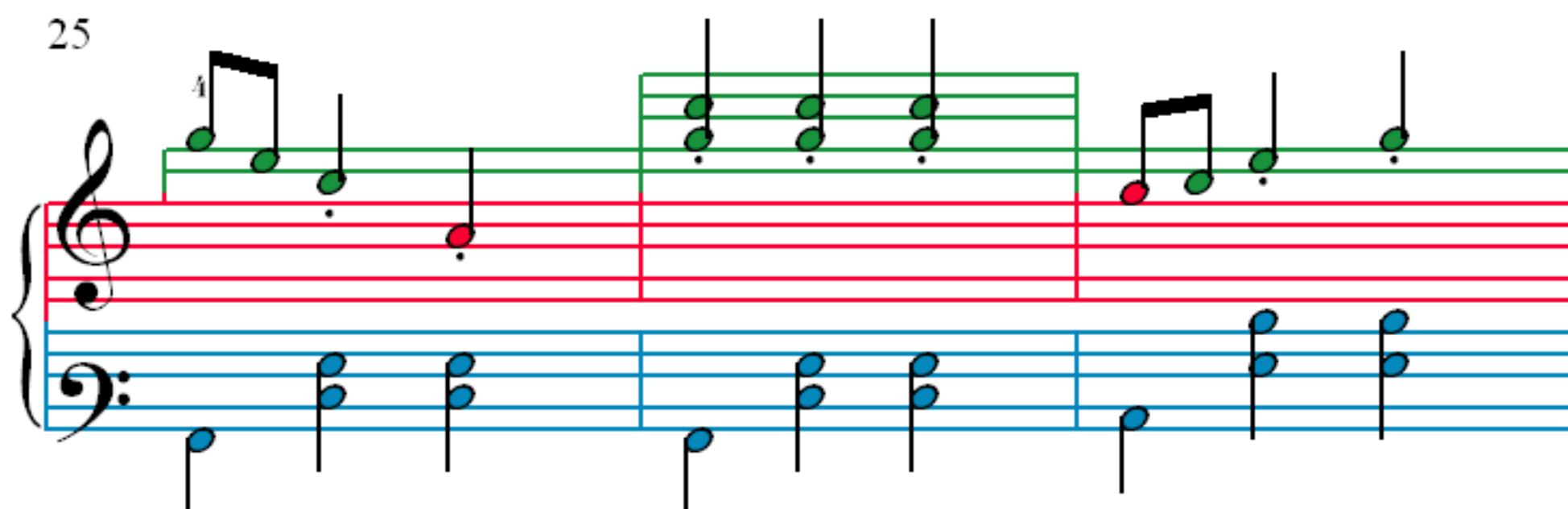
19



22



25



28

31

35

39

42

The musical score for Example 42 consists of three measures. The treble staff (top) features a sequence of notes: a quarter note G4 (finger 1), an eighth note A4 (finger 2), a quarter note B4 (finger 1), a quarter note C5 (finger 3), a quarter note D5 (finger 4), a dotted half note E5 (finger 5), a half note F#5, and a quarter note G5 (finger 4). The bass staff (bottom) features a sequence of notes: a quarter note G3, a half rest, a quarter note A3, a quarter note B3, a quarter note C4, a half rest, and a quarter note D4. The notes are color-coded: G4 (green), A4 (red), B4 (green), C5 (green), D5 (green), E5 (green), F#5 (red), G5 (green), G3 (blue), A3 (blue), B3 (blue), C4 (blue), and D4 (blue).

45

The musical notation for exercise 45 consists of three staves. The top staff is a treble clef with green notes. The middle staff is a red staff with red notes. The bottom staff is a blue staff with blue notes. The notes are arranged in a sequence across three measures, with some notes marked with numbers 1, 2, 3, and 4.

48

48

51

Figure 1: Musical score for Example 1. The score is for a piano and features three staves. The top staff is green and contains a melody starting with a quarter note G4, followed by an eighth note A4 and a quarter note B4. The middle staff is red and is empty. The bottom staff is blue and contains a bass line starting with a quarter note G2, followed by an eighth note A2 and a quarter note B2. The score is marked with a treble clef and a bass clef. The number 51 is in the top left corner.