

La Traviata - N15 Scena ed Aria

G. Verdi (1813–1901)

1

Measures 1-4 of the musical score. The system consists of a vocal line (treble clef) and a piano accompaniment (grand staff). The vocal line features a melodic line with notes in purple and green. The piano accompaniment has a right hand with notes in green and red, and a left hand with notes in blue. The key signature is one sharp (F#) and the time signature is 4/4.

5

Measures 5-8 of the musical score. The system consists of a vocal line (treble clef) and a piano accompaniment (grand staff). The vocal line features a melodic line with notes in purple and green. The piano accompaniment has a right hand with notes in green and red, and a left hand with notes in blue. The key signature is one sharp (F#) and the time signature is 4/4.

9

Measures 9-12 of the musical score. The system consists of a vocal line (treble clef) and a piano accompaniment (grand staff). The vocal line features a melodic line with notes in green. The piano accompaniment has a right hand with notes in red and blue, and a left hand with notes in blue. The key signature is one sharp (F#) and the time signature is 4/4.

13

Measures 13-16 of the musical score. The system consists of a vocal line (treble clef) and a piano accompaniment (grand staff). The vocal line features a melodic line with notes in green and purple. The piano accompaniment has a right hand with notes in red and blue, and a left hand with notes in blue. The key signature is one sharp (F#) and the time signature is 4/4.

16

20

23

26

28

30

33

36

38


42

47

51

54

54



57.

60

60

65

65

The musical score for Example 65 consists of a piano accompaniment. It features a treble staff with a green staff above it and a bass staff with a blue staff below it. The music is in 4/4 time and features a simple melody in the treble and a bass line in the bass.

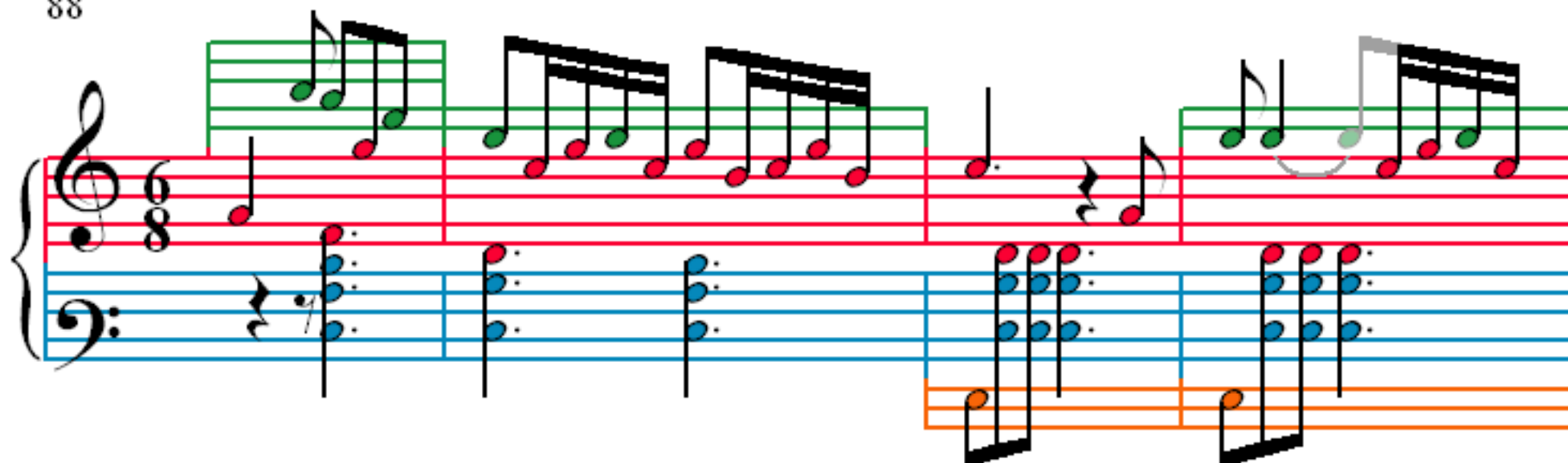
70

75

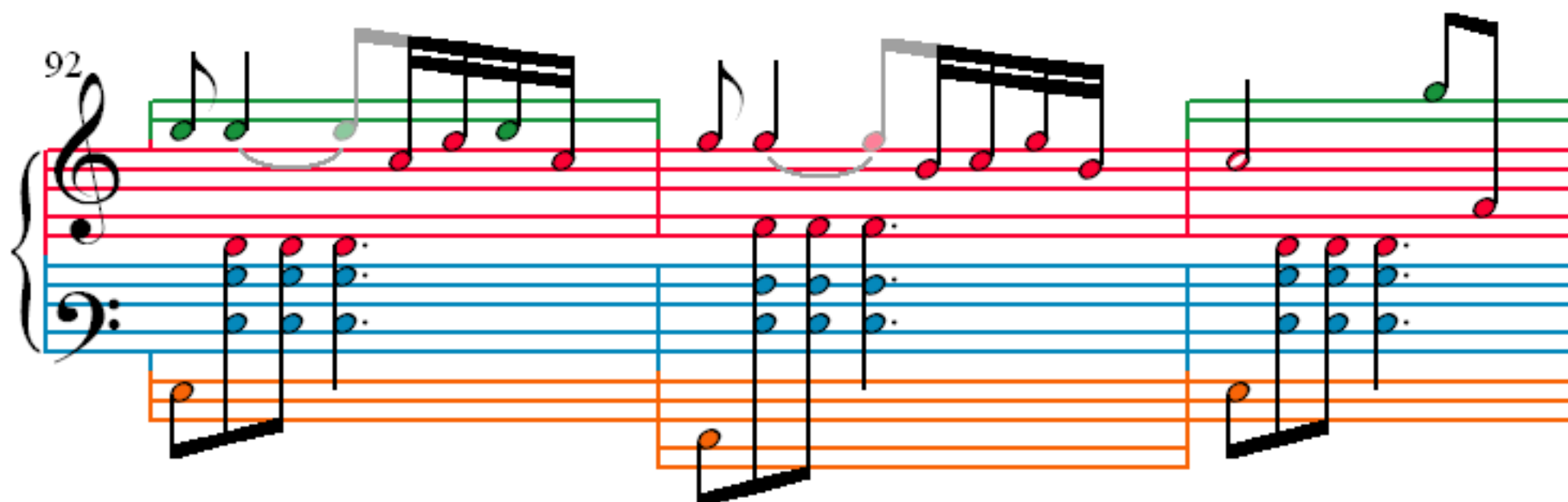
80

84

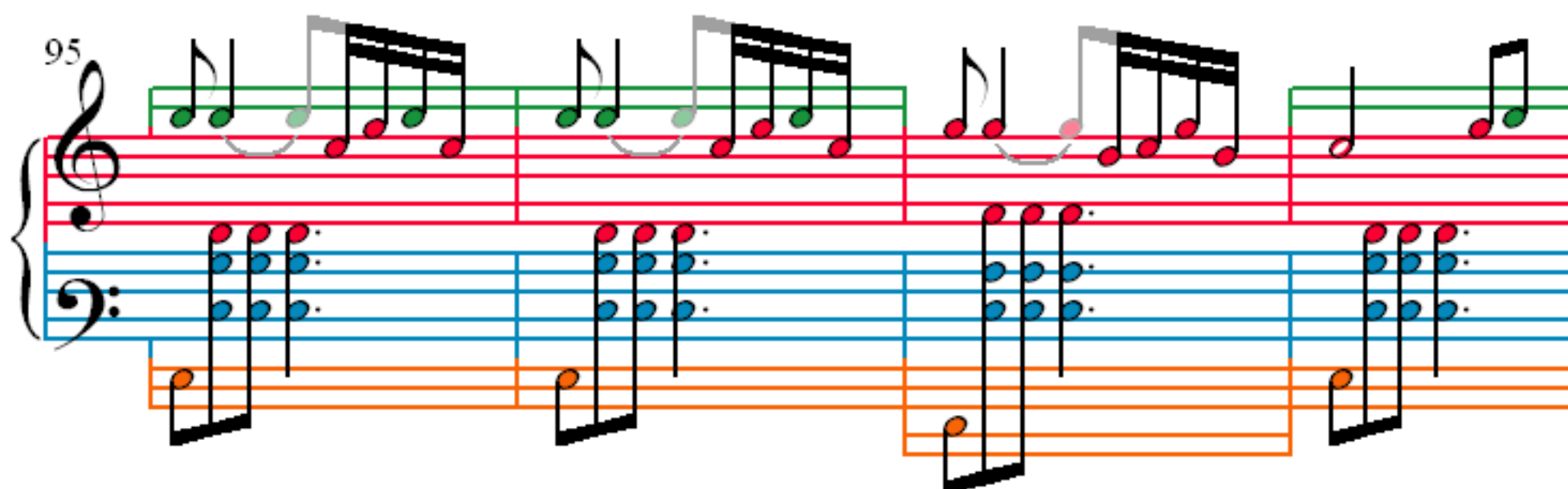
88



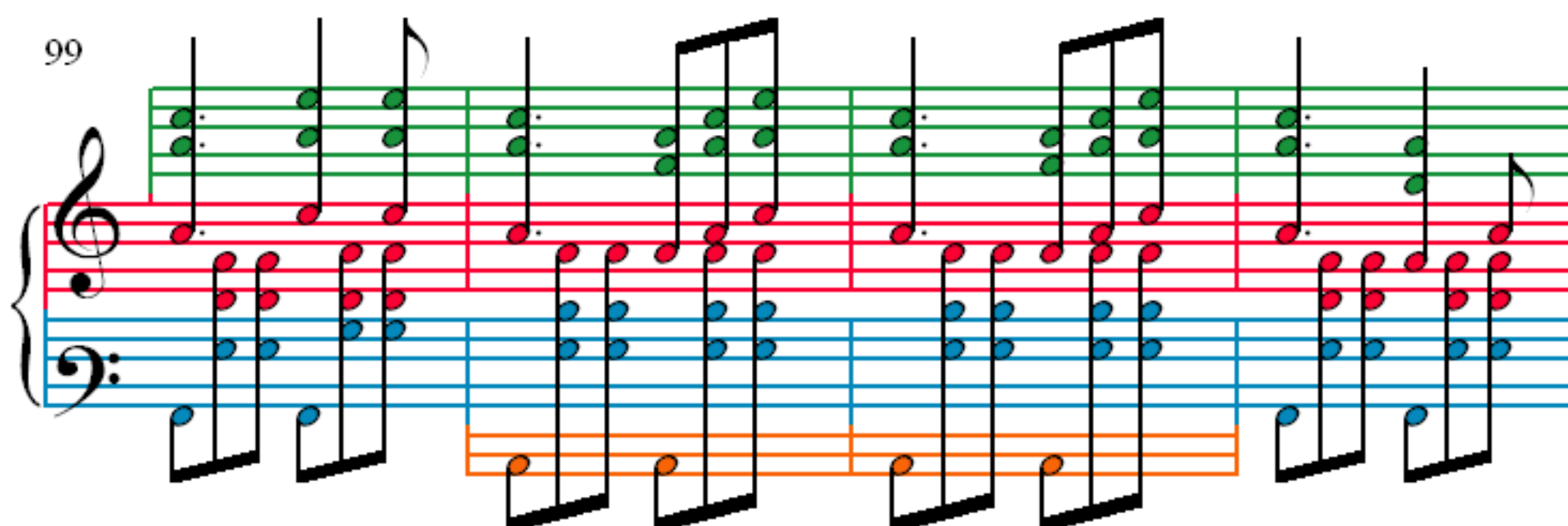
92



95



99



103

106

109

112

115

118

121

124

128

System 128: Treble clef staff with a whole note rest followed by a half note, then a half note and a quarter note. Bass clef staff with a half note and a quarter note. A third staff below the bass clef contains a half note and a quarter note. The system is divided into four measures by vertical bar lines.

132

System 132: Treble clef staff with a half note and a quarter note, then a half note and a quarter note. Bass clef staff with a half note and a quarter note. A third staff below the bass clef contains a half note and a quarter note. The system is divided into four measures by vertical bar lines.

136

System 136: Treble clef staff with a half note and a quarter note, then a half note and a quarter note. Bass clef staff with a half note and a quarter note. A third staff below the bass clef contains a half note and a quarter note. The system is divided into four measures by vertical bar lines.

139

System 139: Treble clef staff with a half note and a quarter note, then a half note and a quarter note. Bass clef staff with a half note and a quarter note. A third staff below the bass clef contains a half note and a quarter note. The system is divided into four measures by vertical bar lines.

142

145

148

151

154

157

160

163