

# The Blue Danube Waltz (main theme)

J. Strauss Jr. (1825–1899)

1

Measures 1-4 of the main theme. The treble clef staff is in 3/4 time, with a key signature of one flat (B-flat). The bass clef staff is in 4/4 time. The melody in the treble clef starts with a quarter rest, followed by a quarter note G4, a quarter note A4, and a quarter note B4. The bass clef staff has a whole rest in measure 1, followed by a half note G3 and a half note F3 in measure 2, and then a series of eighth notes in measures 3 and 4. A green box highlights the melody in measures 3 and 4.

5

Measures 5-8 of the main theme. The treble clef staff continues the melody from measure 4, with a quarter note G4, a quarter note A4, and a quarter note B4. The bass clef staff continues the bass line from measure 4, with a half note G3 and a half note F3 in measure 5, and then a series of eighth notes in measures 6 and 7. A green box highlights the melody in measures 7 and 8.

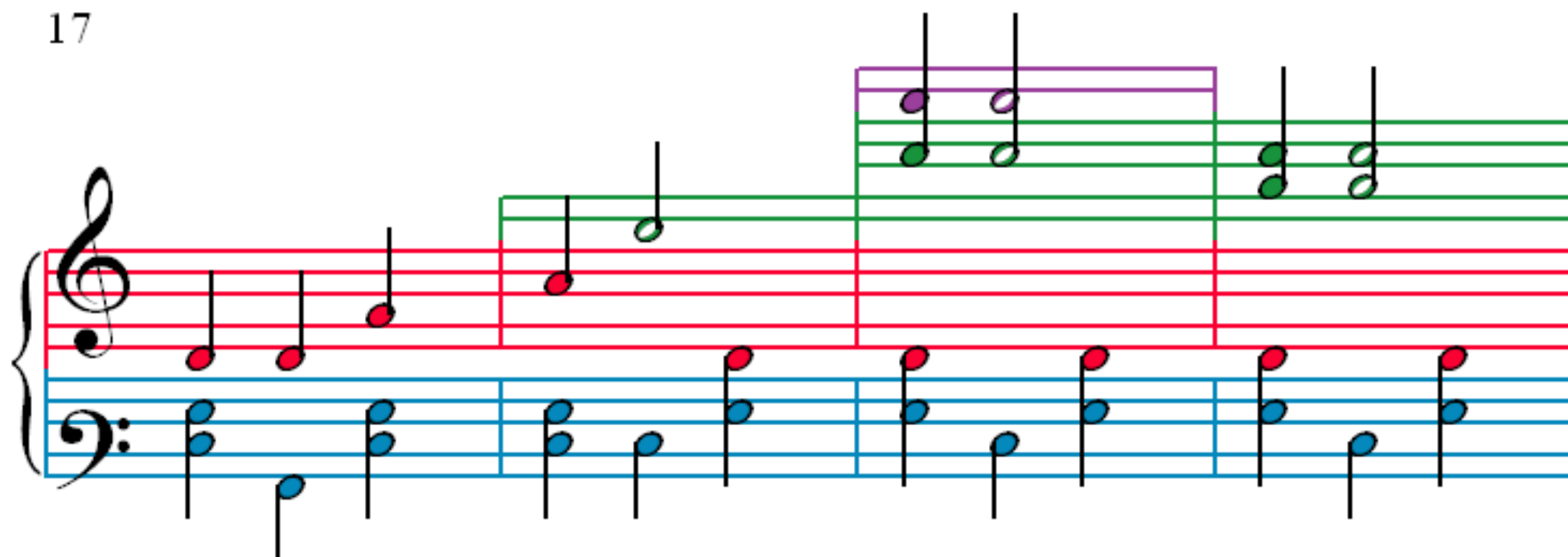
9

Measures 9-12 of the main theme. The treble clef staff continues the melody from measure 8, with a quarter note G4, a quarter note A4, and a quarter note B4. The bass clef staff continues the bass line from measure 8, with a half note G3 and a half note F3 in measure 9, and then a series of eighth notes in measures 10 and 11. A green box highlights the melody in measures 11 and 12.

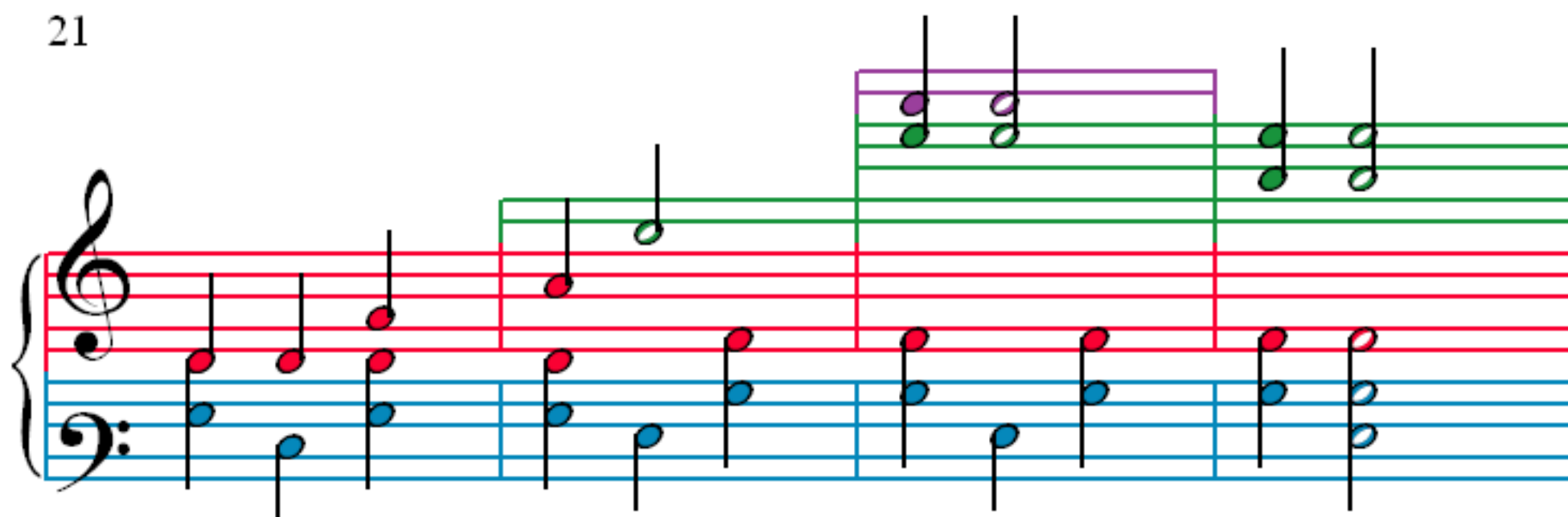
13

Measures 13-16 of the main theme. The treble clef staff continues the melody from measure 12, with a quarter note G4, a quarter note A4, and a quarter note B4. The bass clef staff continues the bass line from measure 12, with a half note G3 and a half note F3 in measure 13, and then a series of eighth notes in measures 14 and 15. A green box highlights the melody in measures 15 and 16.

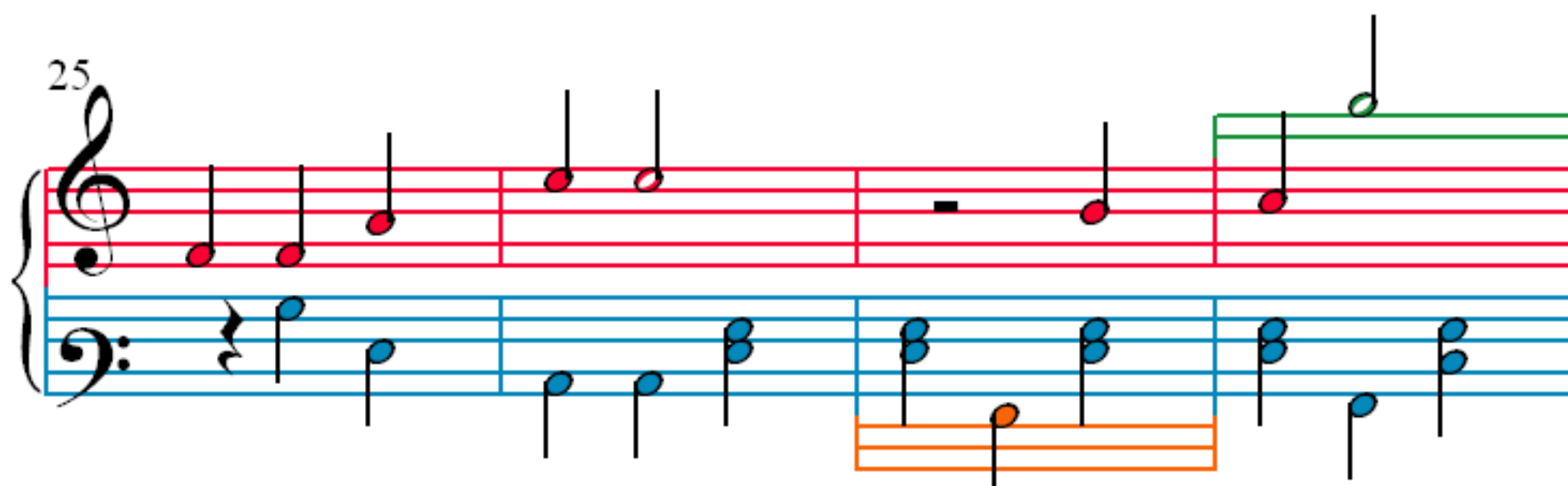
17



21



25



29

