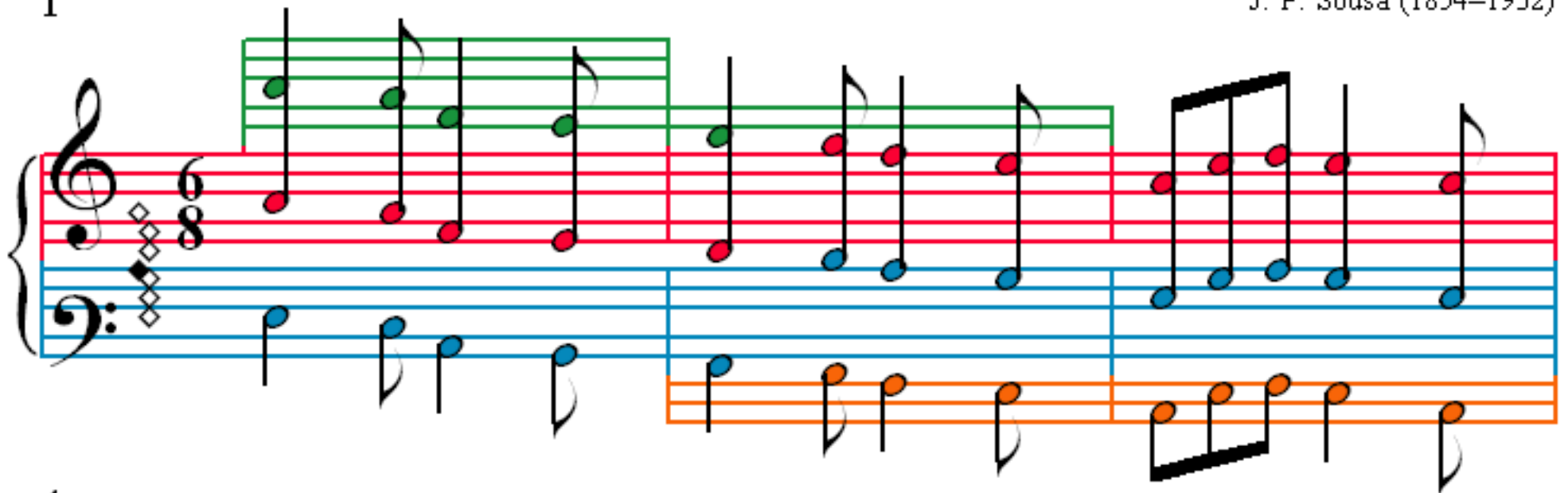


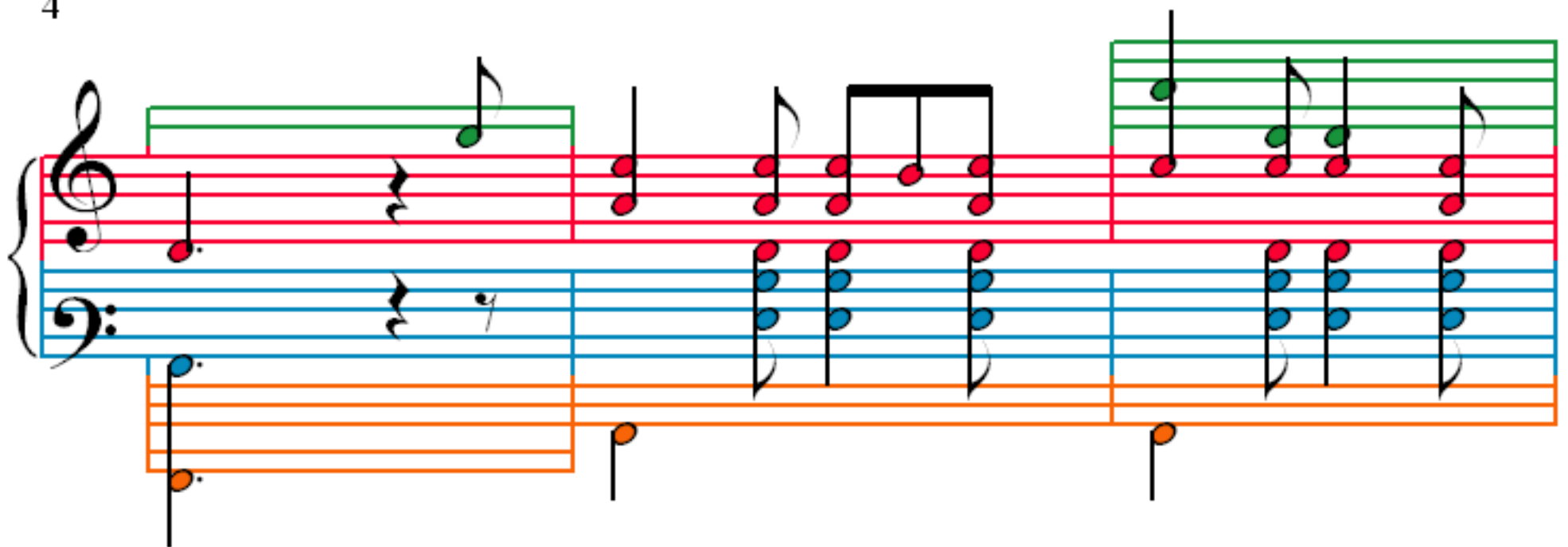
# The Liberty Bell March

J. P. Sousa (1854–1932)

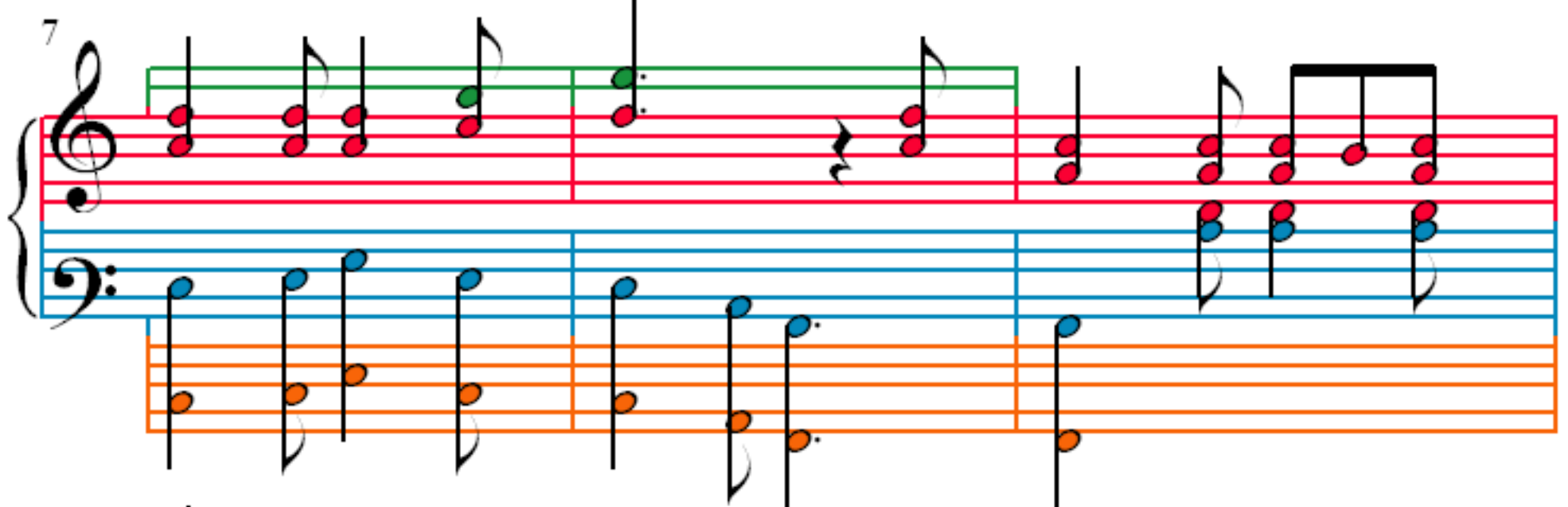
1



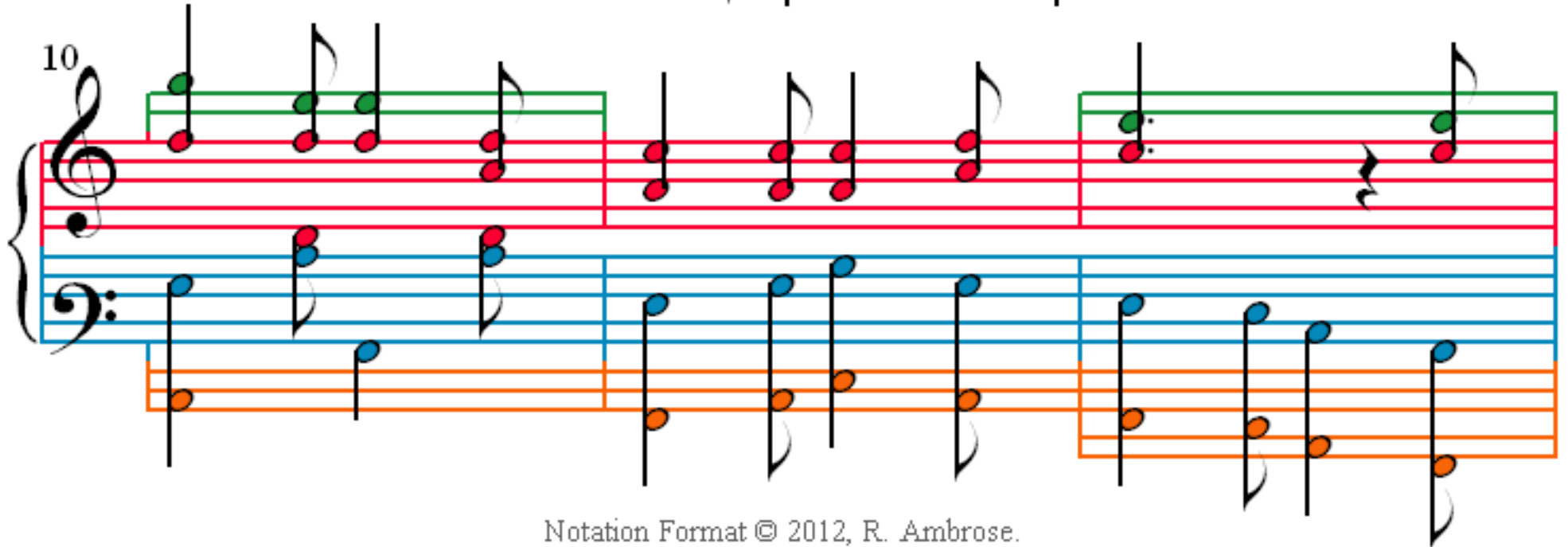
4



7



10



13

Measures 13-15 of the musical score. Measure 13 features a treble clef with a melody of eighth notes and a bass clef with a steady eighth-note accompaniment. Measure 14 continues the melody and accompaniment. Measure 15 shows a change in the treble clef melody, with a new eighth-note pattern. The bass clef accompaniment remains consistent.

16

Measures 16-18 of the musical score. Measure 16 features a treble clef with a melody of eighth notes and a bass clef with a steady eighth-note accompaniment. Measure 17 continues the melody and accompaniment. Measure 18 shows a change in the treble clef melody, with a new eighth-note pattern. The bass clef accompaniment remains consistent.

19

Measures 19-21 of the musical score. Measure 19 features a treble clef with a melody of eighth notes and a bass clef with a steady eighth-note accompaniment. Measure 20 continues the melody and accompaniment. Measure 21 shows a change in the treble clef melody, with a new eighth-note pattern. The bass clef accompaniment remains consistent.

22

Measures 22-24 of the musical score. Measure 22 features a treble clef with a melody of eighth notes and a bass clef with a steady eighth-note accompaniment. Measure 23 continues the melody and accompaniment. Measure 24 shows a change in the treble clef melody, with a new eighth-note pattern. The bass clef accompaniment remains consistent.

25

28

31

34

37

40

43

46

49

52

55

58

61

64

67

70



73

Measures 73-75 of the piece. Measure 73 features a treble staff with a green line (G4), a red line (A4), and a blue line (B4), each with a dotted quarter note. The bass staff has a blue line (B3) with a dotted quarter note and an orange line (C3) with a dotted quarter note. Measure 74 continues with the same notes. Measure 75 shows the treble staff with a green line (G4), a red line (A4), and a blue line (B4), each with a quarter note. The bass staff has a blue line (B3) with a quarter note and an orange line (C3) with a quarter note.

76

Measures 76-78 of the piece. Measure 76 features a treble staff with a green line (G4), a red line (A4), and a blue line (B4), each with a quarter note. The bass staff has a blue line (B3) with a quarter note and an orange line (C3) with a quarter note. Measure 77 continues with the same notes. Measure 78 shows the treble staff with a green line (G4), a red line (A4), and a blue line (B4), each with a quarter note. The bass staff has a blue line (B3) with a quarter note and an orange line (C3) with a quarter note.

79

Measures 79-81 of the piece. Measure 79 features a treble staff with a green line (G4), a red line (A4), and a blue line (B4), each with a quarter note. The bass staff has a blue line (B3) with a quarter note and an orange line (C3) with a quarter note. Measure 80 continues with the same notes. Measure 81 shows the treble staff with a green line (G4), a red line (A4), and a blue line (B4), each with a quarter note. The bass staff has a blue line (B3) with a quarter note and an orange line (C3) with a quarter note.

82

Measures 82-84 of the piece. Measure 82 features a treble staff with a green line (G4), a red line (A4), and a blue line (B4), each with a quarter note. The bass staff has a blue line (B3) with a quarter note and an orange line (C3) with a quarter note. Measure 83 continues with the same notes. Measure 84 shows the treble staff with a green line (G4), a red line (A4), and a blue line (B4), each with a quarter note. The bass staff has a blue line (B3) with a quarter note and an orange line (C3) with a quarter note.

85

Measures 85-87 of the musical score. Measure 85 features a treble staff with a green line (G4), a red line (A4), and a blue line (B4), each with a dotted quarter note. The bass staff has a blue line (B3) with a dotted quarter note and an orange line (C3) with a dotted quarter note. Measure 86 continues with similar patterns. Measure 87 introduces a purple line (C5) in the treble staff, which has a dotted quarter note, while the red and blue lines continue their pattern. The bass staff remains the same.

88

Measures 88-90 of the musical score. Measure 88 features a treble staff with a purple line (C5) and a green line (G4), each with a dotted quarter note. The red line (A4) has a dotted quarter note, and the blue line (B4) has a dotted quarter note. The bass staff has a blue line (B3) with a dotted quarter note and an orange line (C3) with a dotted quarter note. Measure 89 continues with similar patterns. Measure 90 introduces a green line (G4) in the treble staff, which has a dotted quarter note, while the purple and red lines continue their pattern. The bass staff remains the same.

91

Measures 91-93 of the musical score. Measure 91 features a treble staff with a purple line (C5) and a green line (G4), each with a dotted quarter note. The red line (A4) has a dotted quarter note, and the blue line (B4) has a dotted quarter note. The bass staff has a blue line (B3) with a dotted quarter note and an orange line (C3) with a dotted quarter note. Measure 92 continues with similar patterns. Measure 93 introduces a green line (G4) in the treble staff, which has a dotted quarter note, while the purple and red lines continue their pattern. The bass staff remains the same.

94

Measures 94-96 of the musical score. Measure 94 features a treble staff with a green line (G4), a red line (A4), and a blue line (B4), each with a dotted quarter note. The bass staff has a blue line (B3) with a dotted quarter note and an orange line (C3) with a dotted quarter note. Measure 95 continues with similar patterns. Measure 96 introduces a purple line (C5) in the treble staff, which has a dotted quarter note, while the green and red lines continue their pattern. The bass staff remains the same.



97

100

103

106

109

Measures 109-111 of the musical score. Measure 109 features a treble staff with a green staff system above it containing a whole-note chord. The bass staff has a whole-note chord. Measure 110 has a treble staff with a whole-note chord and a bass staff with a whole-note chord. Measure 111 has a treble staff with a whole-note chord and a bass staff with a whole-note chord.

112

Measures 112-114 of the musical score. Measure 112 features a treble staff with a whole-note chord and a bass staff with a whole-note chord. Measure 113 has a treble staff with a whole-note chord and a bass staff with a whole-note chord. Measure 114 has a treble staff with a whole-note chord and a bass staff with a whole-note chord.

115

Measures 115-117 of the musical score. Measure 115 features a treble staff with a whole-note chord and a bass staff with a whole-note chord. Measure 116 has a treble staff with a whole-note chord and a bass staff with a whole-note chord. Measure 117 has a treble staff with a whole-note chord and a bass staff with a whole-note chord.

118

Measures 118-120 of the musical score. Measure 118 features a treble staff with a whole-note chord and a bass staff with a whole-note chord. Measure 119 has a treble staff with a whole-note chord and a bass staff with a whole-note chord. Measure 120 has a treble staff with a whole-note chord and a bass staff with a whole-note chord.

121

124

127

130

133

136

139

142

145

Measures 145-147 of the musical score. Measure 145 features a treble staff with a green line (F4), a red line (G4), and a blue line (A4). The bass staff has a blue line (F3), a red line (G3), and an orange line (A2). Measure 146 continues the pattern. Measure 147 shows a treble staff with a purple line (F5), a green line (G5), and a red line (A5), while the bass staff has a blue line (F4), a red line (G4), and an orange line (A4).

148

Measures 148-150 of the musical score. Measure 148 features a treble staff with a purple line (F5), a green line (G5), and a red line (A5). The bass staff has a blue line (F4), a red line (G4), and an orange line (A4). Measure 149 continues the pattern. Measure 150 shows a treble staff with a purple line (F5), a green line (G5), and a red line (A5), while the bass staff has a blue line (F4), a red line (G4), and an orange line (A4).

151

Measures 151-153 of the musical score. Measure 151 features a treble staff with a purple line (F5), a green line (G5), and a red line (A5). The bass staff has a blue line (F4), a red line (G4), and an orange line (A4). Measure 152 continues the pattern. Measure 153 shows a treble staff with a purple line (F5), a green line (G5), and a red line (A5), while the bass staff has a blue line (F4), a red line (G4), and an orange line (A4).

154

Measures 154-156 of the musical score. Measure 154 features a treble staff with a purple line (F5), a green line (G5), and a red line (A5). The bass staff has a blue line (F4), a red line (G4), and an orange line (A4). Measure 155 continues the pattern. Measure 156 shows a treble staff with a purple line (F5), a green line (G5), and a red line (A5), while the bass staff has a blue line (F4), a red line (G4), and an orange line (A4).

157

160

163

166



172

175

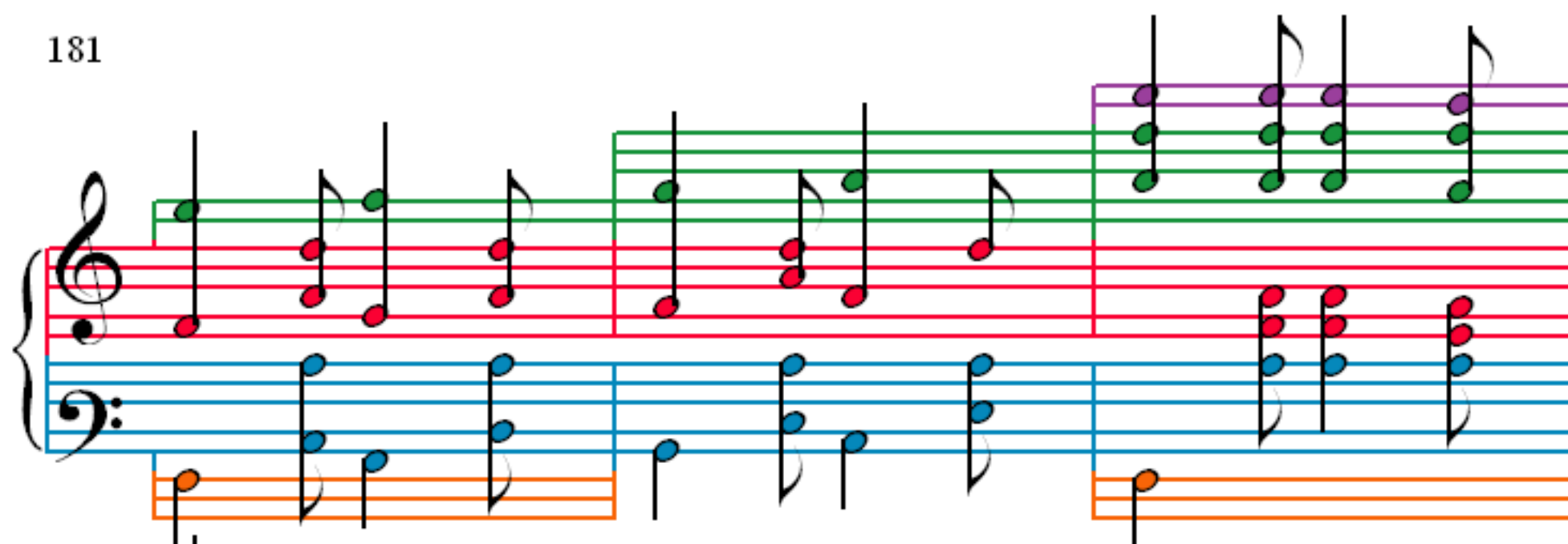
178

The Liberty Bell March

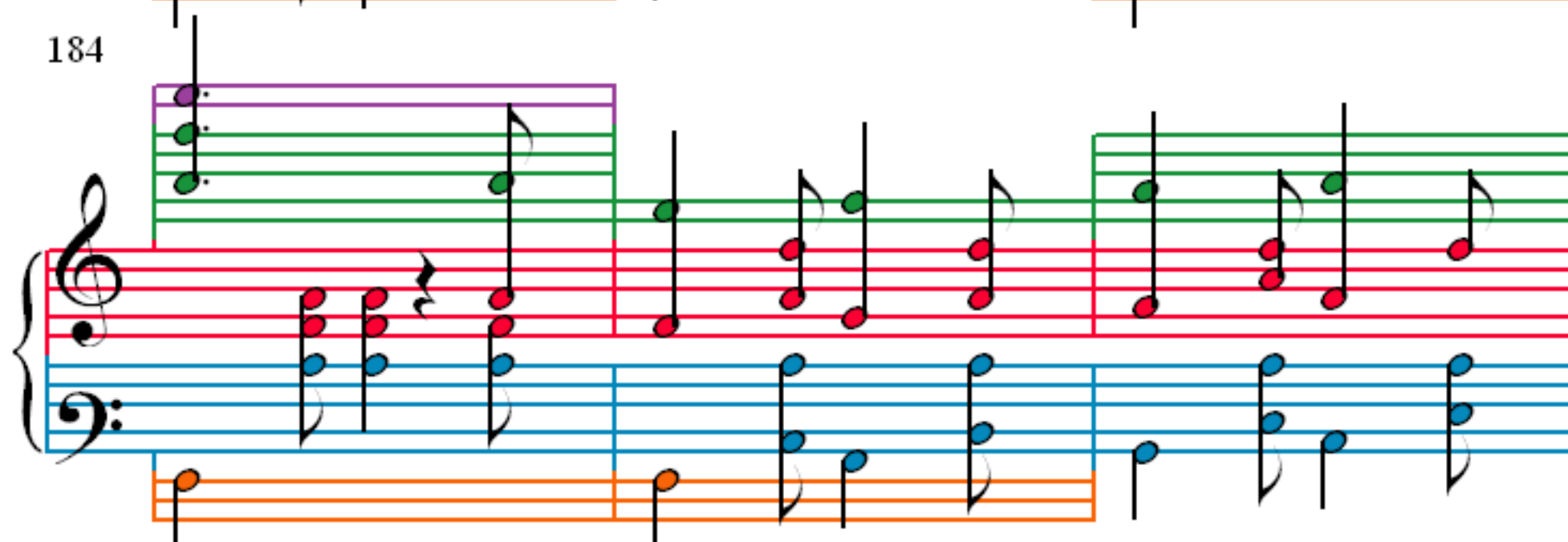
Notation Format © 2012, R. Ambrose.

Page 15 of 18

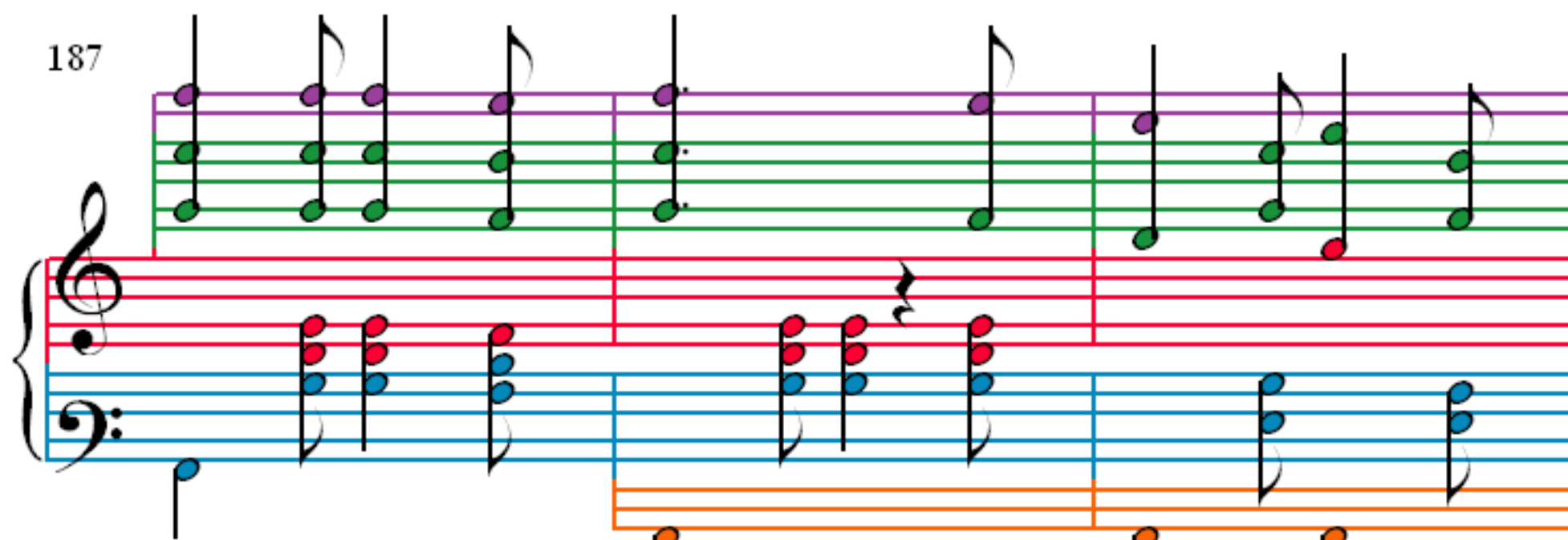
181



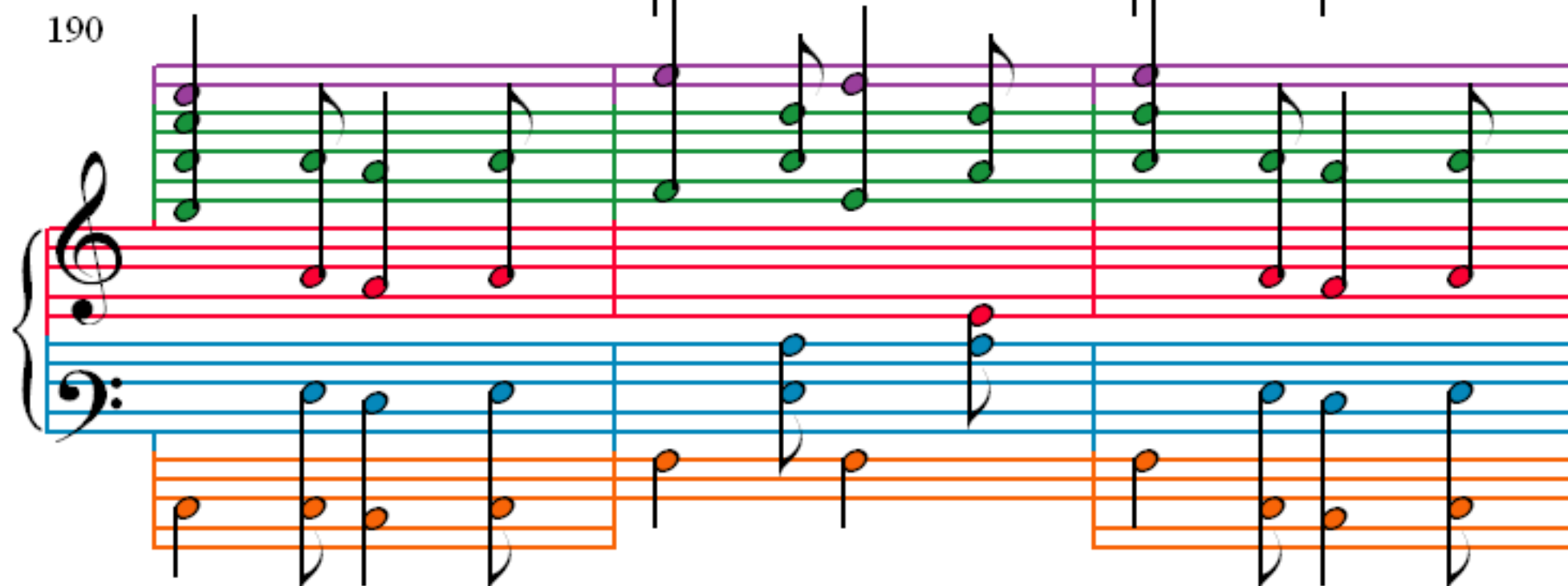
184



187



190



193

Measures 193-195. Treble clef: Purple staff (dotted quarter, eighth), Green staff (eighth notes), Red staff (quarter notes). Bass clef: Blue staff (eighth notes), Orange staff (quarter notes).

196

Measures 196-198. Treble clef: Green staff (eighth notes), Red staff (quarter notes). Bass clef: Blue staff (eighth notes), Orange staff (quarter notes).

199

Measures 199-201. Treble clef: Purple staff (dotted quarter, eighth), Green staff (eighth notes), Red staff (quarter notes). Bass clef: Blue staff (eighth notes), Orange staff (quarter notes).

202

Measures 202-204. Treble clef: Green staff (eighth notes), Purple staff (dotted quarter, eighth), Red staff (quarter notes). Bass clef: Blue staff (eighth notes), Orange staff (quarter notes).

205

207

209

211