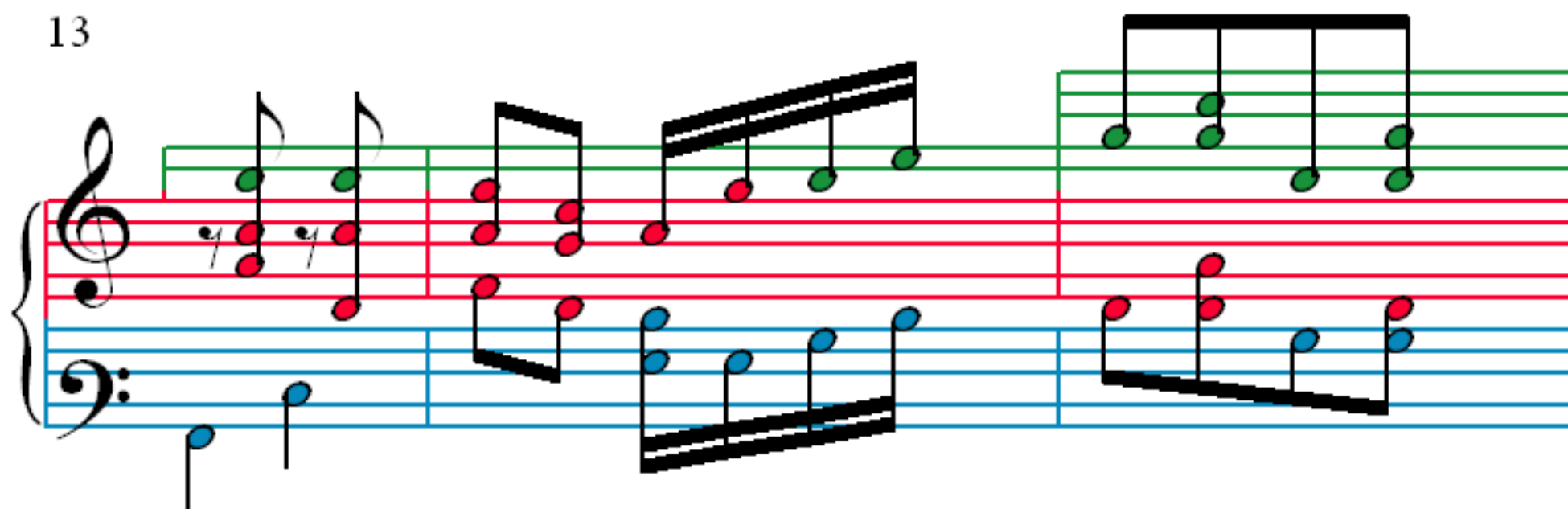


Heidenröslein

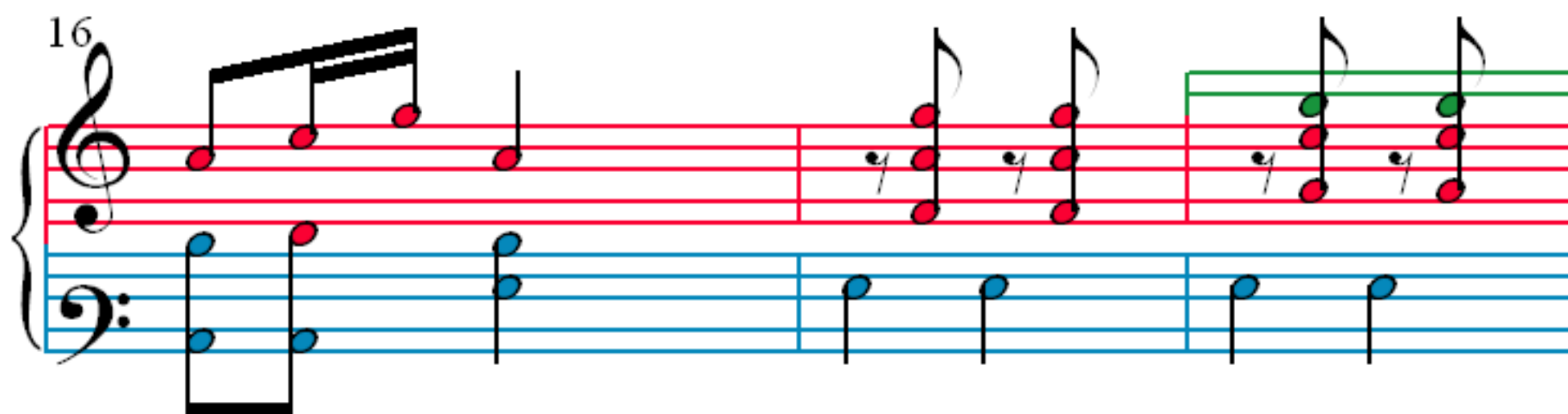
F. Schubert (1797–1828)

The image displays the first ten measures of the piano introduction to Franz Schubert's 'Heidenröslein'. The score is written for piano in 2/4 time, featuring a treble and bass staff joined by a brace. The key signature is one sharp (F#), indicated by a sharp sign and a diamond-shaped key signature symbol. The notation includes various musical symbols: treble and bass clefs, a 2/4 time signature, a key signature symbol, and notes with stems and flags. The notes are color-coded: red for the melody, blue for the bass line, and green for the right-hand accompaniment. The first measure is marked with a '1' above the treble staff. The second measure is marked with a '4' above the treble staff. The seventh measure is marked with a '7' above the treble staff. The tenth measure is marked with a '10' above the treble staff. The score is divided into four systems, each containing two measures. The first system (measures 1-2) shows the beginning of the piece. The second system (measures 3-4) continues the melody. The third system (measures 5-6) shows the right-hand accompaniment. The fourth system (measures 7-8) continues the melody. The fifth system (measures 9-10) shows the right-hand accompaniment. The sixth system (measures 11-12) continues the melody. The seventh system (measures 13-14) shows the right-hand accompaniment. The eighth system (measures 15-16) continues the melody. The ninth system (measures 17-18) shows the right-hand accompaniment. The tenth system (measures 19-20) continues the melody. The score is written in a standard musical notation format, with notes and rests clearly visible on the staves.

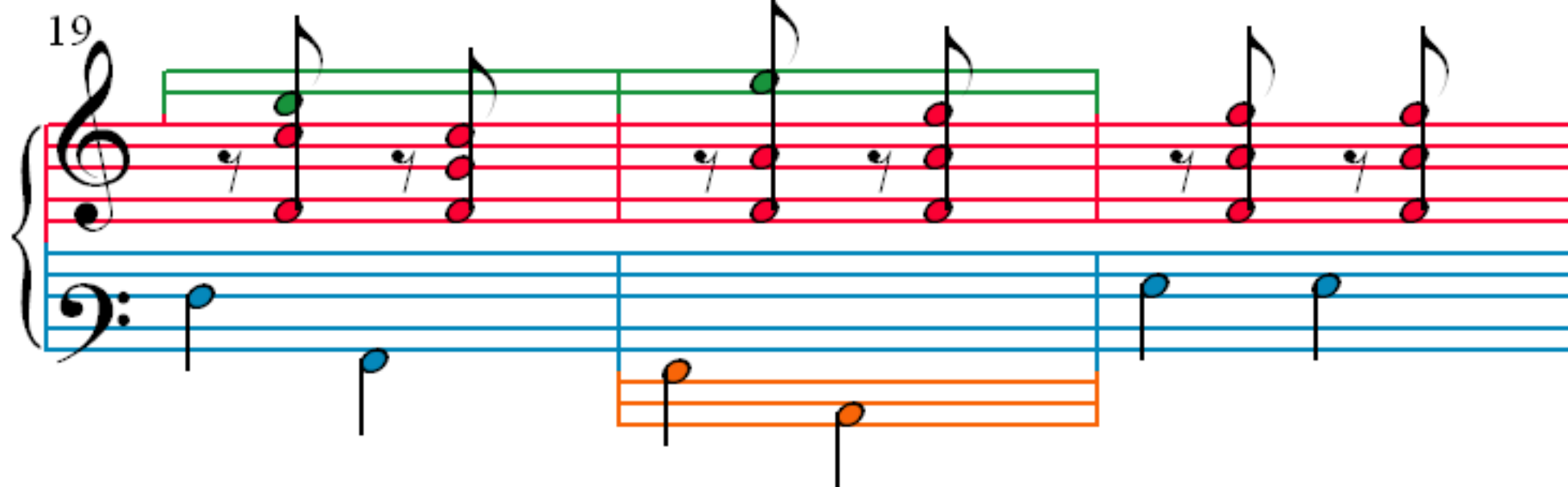
13



16



19



22



25

Measures 25-27. Treble clef: Measure 25 (green quarter, red quarter), Measure 26 (green quarter, red quarter), Measure 27 (red quarter, red quarter). Bass clef: Measure 25 (blue quarter), Measure 26 (blue quarter), Measure 27 (blue quarter, blue quarter).

28

Measures 28-30. Treble clef: Measure 28 (red quarter, red quarter), Measure 29 (red quarter, red quarter), Measure 30 (red quarter, red quarter). Bass clef: Measure 28 (orange quarter, orange quarter), Measure 29 (blue quarter), Measure 30 (blue quarter, blue quarter).

31

Measures 31-33. Treble clef: Measure 31 (green quarter, green quarter), Measure 32 (green quarter, green quarter), Measure 33 (red quarter, red quarter). Bass clef: Measure 31 (blue quarter, blue quarter), Measure 32 (blue quarter, blue quarter), Measure 33 (blue quarter, blue quarter).

34

Measures 34-36. Treble clef: Measure 34 (red quarter, red quarter), Measure 35 (red quarter, red quarter), Measure 36 (red quarter, red quarter). Bass clef: Measure 34 (blue quarter), Measure 35 (blue quarter), Measure 36 (orange quarter, orange quarter).

