

Novellette

N. Rimsky-Korsakov (1844–1908)

1

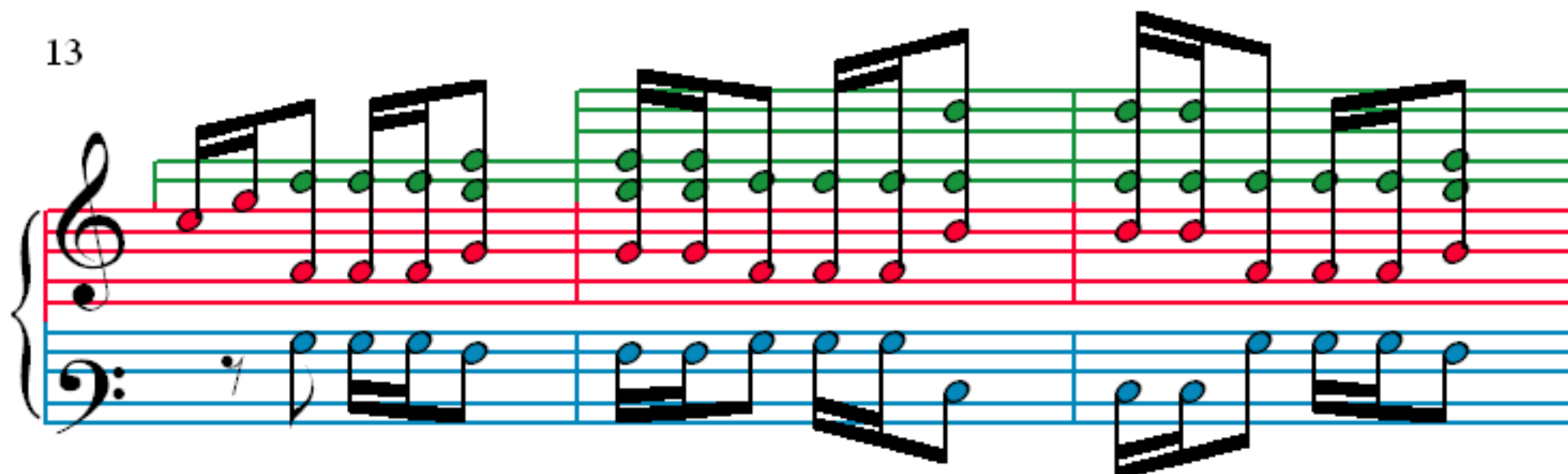
4

7

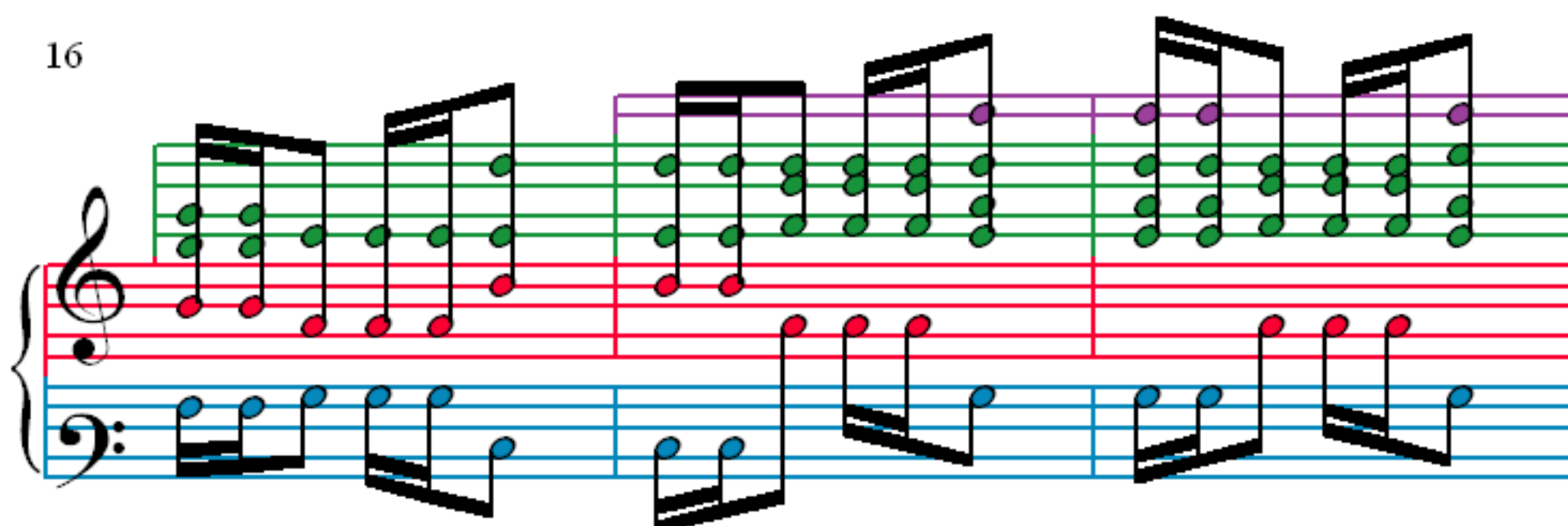
10

The image displays the first ten measures of a musical piece titled 'Novellette' by N. Rimsky-Korsakov. The score is written for piano and features a 2/4 time signature. It is organized into four systems, each containing a grand staff (treble and bass clefs) and a separate line for a third voice or instrument. The notes are color-coded: red for the upper voice, blue for the middle voice, orange for the lower voice, and pink for the third voice. The first system (measures 1-3) includes a key signature change to one sharp (F#) in measure 1. The second system (measures 4-6) continues the melodic development. The third system (measures 7-9) shows further harmonic progression. The fourth system (measures 10-12) concludes the excerpt, with measure 10 featuring a green highlight on the upper voice. The notation includes various musical symbols such as beams, slurs, and dynamic markings.

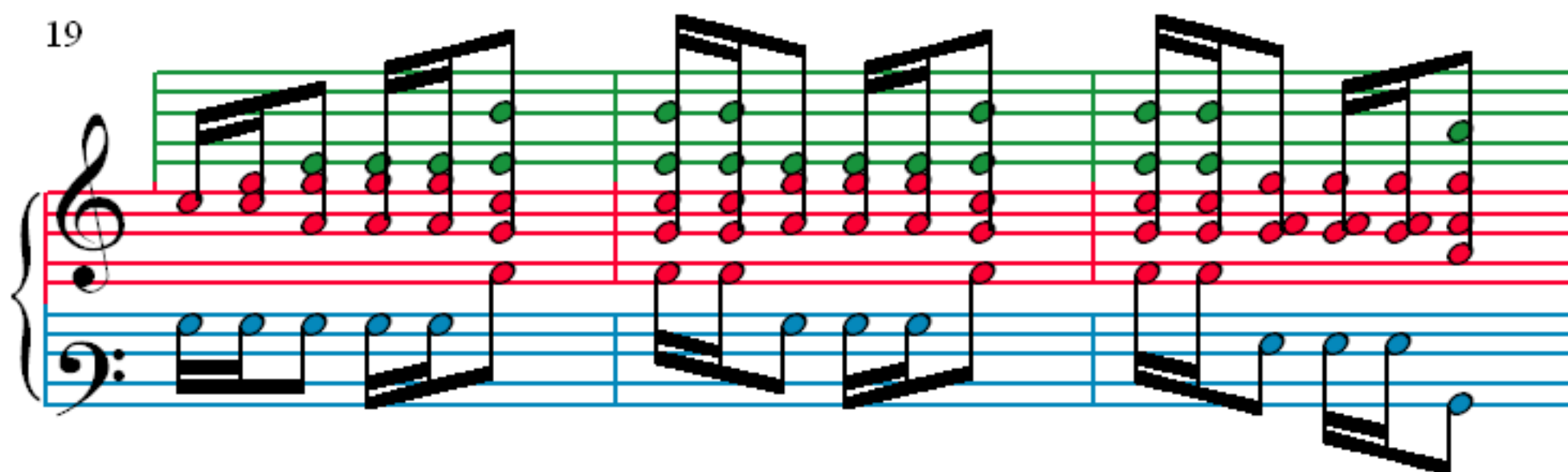
13



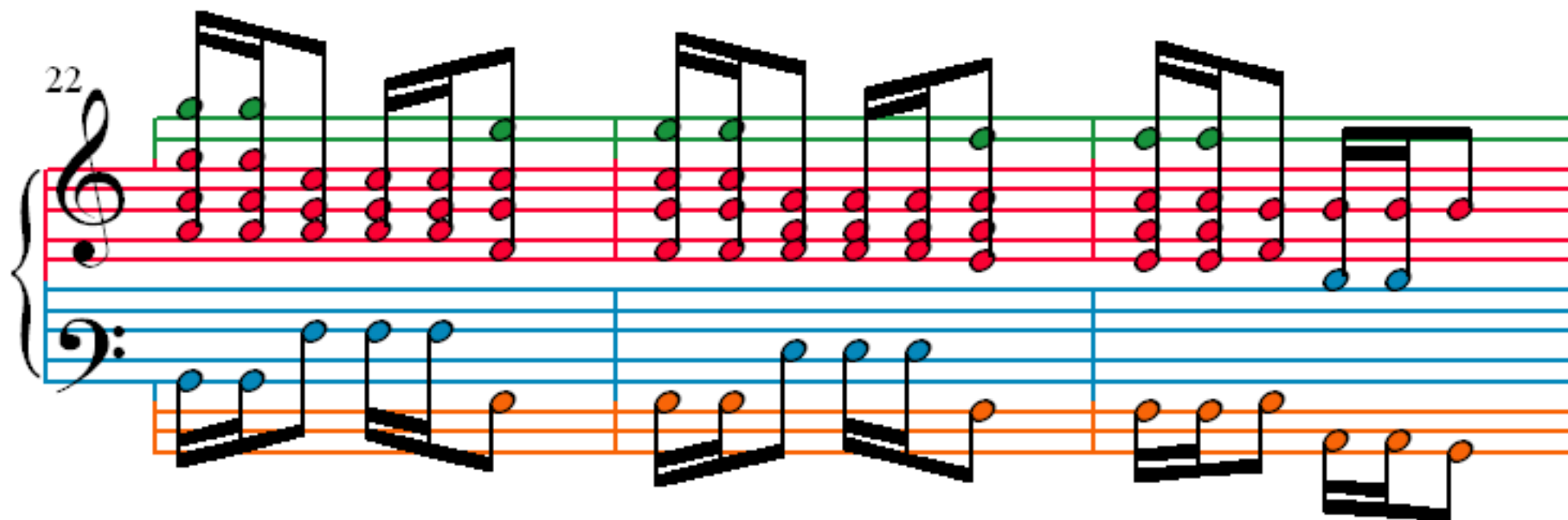
16



19



22



25

28

31

34

37

Measures 37-39 of a musical score. The system consists of a grand staff with a treble and bass clef. The treble staff has a green line at the top. The bass staff has a blue line at the top. The notes are colored: red for the right hand and blue for the left hand. The notes are eighth notes, and the melody is ascending in each measure.

40

Measures 40-42 of a musical score. The system consists of a grand staff with a treble and bass clef. The treble staff has a green line at the top. The bass staff has a blue line at the top. The notes are colored: red for the right hand and blue for the left hand. The notes are eighth notes, and the melody is ascending in each measure.

43

Measures 43-45 of a musical score. The system consists of a grand staff with a treble and bass clef. The treble staff has a green line at the top. The bass staff has a blue line at the top. The notes are colored: red for the right hand and blue for the left hand. The notes are eighth notes, and the melody is ascending in each measure.

46

Measures 46-48 of a musical score. The system consists of a grand staff with a treble and bass clef. The treble staff has a green line at the top. The bass staff has a blue line at the top. The notes are colored: red for the right hand and blue for the left hand. The notes are eighth notes, and the melody is ascending in each measure.

49

Measures 49-51. Treble clef: red notes on a green staff. Bass clef: blue notes on a blue staff and orange notes on an orange staff.

52

Measures 52-54. Treble clef: red notes on a green staff. Bass clef: blue notes on a blue staff and orange notes on an orange staff.

55

Measures 55-57. Treble clef: red notes on a green staff. Bass clef: blue notes on a blue staff and orange notes on an orange staff.

58

Measures 58-60. Treble clef: red notes on a green staff. Bass clef: blue notes on a blue staff and orange notes on an orange staff.

61

64

67

70

73

Measures 73-75. Treble clef has red notes, bass clef has blue notes. Measure 75 has a fermata on the bass line.

76

Measures 76-78. Treble clef has red notes, bass clef has blue notes. Measure 78 has a fermata on the bass line.

79

Measures 79-81. Treble clef has green notes, bass clef has blue notes. Measure 81 has a fermata on the bass line.

82

Measures 82-84. Treble clef has green notes, bass clef has blue notes. Measure 84 has a fermata on the bass line.

85

Measures 85-87. Treble clef: Green staff line, red notes. Bass clef: Blue and orange notes.

88

Measures 88-90. Treble clef: Green staff line, red notes. Bass clef: Blue, orange, and pink notes.

91

Measures 91-93. Treble clef: Red notes. Bass clef: Blue, orange, and pink notes.

94

Measures 94-96. Treble clef: Red notes. Bass clef: Blue, orange, and pink notes.

97

100

103

106