

# Vase

1

R. Kumar (1988–)

Measures 1 and 2 of the piece 'Vase'. The notation is in 8/4 time, indicated by a treble clef, a key signature of one flat (B-flat), and a 4/8 time signature. The music is written for piano, with a grand staff consisting of a treble and bass staff. The melody is primarily in the treble staff, with some notes in the bass staff. The notes are color-coded: red for the main melody, blue for the bass line, and green for the upper melody. The first measure contains a treble staff with a green line, a red line, and a blue line. The second measure contains a treble staff with a red line, a blue line, and an orange line. The bass staff has a blue line and an orange line.

3

Measures 3 and 4 of the piece 'Vase'. The notation continues from the previous system. The treble staff has a green line, a red line, and a blue line. The bass staff has a blue line and an orange line. The notes are color-coded: red for the main melody, blue for the bass line, and green for the upper melody. The first measure contains a treble staff with a green line, a red line, and a blue line. The second measure contains a treble staff with a red line, a blue line, and an orange line. The bass staff has a blue line and an orange line.

5

Measures 5 and 6 of the piece 'Vase'. The notation continues from the previous system. The treble staff has a green line, a red line, and a blue line. The bass staff has a blue line and an orange line. The notes are color-coded: red for the main melody, blue for the bass line, and green for the upper melody. The first measure contains a treble staff with a green line, a red line, and a blue line. The second measure contains a treble staff with a red line, a blue line, and an orange line. The bass staff has a blue line and an orange line.

7

Measures 7 and 8 of the piece 'Vase'. The notation continues from the previous system. The treble staff has a green line, a red line, and a blue line. The bass staff has a blue line and an orange line. The notes are color-coded: red for the main melody, blue for the bass line, and green for the upper melody. The first measure contains a treble staff with a green line, a red line, and a blue line. The second measure contains a treble staff with a red line, a blue line, and an orange line. The bass staff has a blue line and an orange line.

9

Measures 9 and 10 of a musical score. The system consists of three staves: a top staff with a treble clef, a middle grand staff (treble and bass clefs), and a bottom staff with a single line. The top staff has a green background and contains a sequence of eighth notes. The middle staff has a red background and contains a sequence of eighth notes. The bottom staff has an orange background and contains a sequence of eighth notes. The notation is color-coded: green for the top staff, red for the middle staff, and blue for the bottom staff.

11

Measures 11 and 12 of a musical score. The system consists of three staves: a top staff with a treble clef, a middle grand staff (treble and bass clefs), and a bottom staff with a single line. The top staff has a purple background and contains a sequence of eighth notes. The middle staff has a red background and contains a sequence of eighth notes. The bottom staff has an orange background and contains a sequence of eighth notes. The notation is color-coded: purple for the top staff, red for the middle staff, and blue for the bottom staff.

13

Measures 13 and 14 of a musical score. The system consists of three staves: a top staff with a treble clef, a middle grand staff (treble and bass clefs), and a bottom staff with a single line. The top staff has a purple background and contains a sequence of eighth notes. The middle staff has a red background and contains a sequence of eighth notes. The bottom staff has an orange background and contains a sequence of eighth notes. The notation is color-coded: purple for the top staff, red for the middle staff, and blue for the bottom staff.

15

Measures 15 and 16 of a musical score. The system consists of three staves: a top staff with a treble clef, a middle grand staff (treble and bass clefs), and a bottom staff with a single line. The top staff has a green background and contains a sequence of eighth notes. The middle staff has a red background and contains a sequence of eighth notes. The bottom staff has an orange background and contains a sequence of eighth notes. The notation is color-coded: green for the top staff, red for the middle staff, and blue for the bottom staff.

17

System 17-18: Treble and bass staves. Treble staff has a purple line above it. Notes are colored: red, blue, orange, green, and purple. The system shows two measures of music.

19

System 19-20: Treble and bass staves. Notes are colored: red, blue, orange, and green. The system shows two measures of music.

21

System 21-22: Treble and bass staves. Notes are colored: red, blue, orange, and green. The system shows two measures of music.

23

System 23-24: Treble and bass staves. Notes are colored: red, blue, orange, and green. The system shows two measures of music.

25

12/4

27

29

12/4

31

33

Measures 33 and 34 of a musical score. The notation is presented on a grand staff with treble and bass clefs. The notes are color-coded: red for the right hand, blue for the left hand, and green for the right hand. The right hand part features a complex, multi-measure rest in measure 33, followed by a series of notes in measure 34. The left hand part consists of a single note in measure 33 and a series of notes in measure 34. The notes are connected by stems, and the right hand part includes a multi-measure rest in measure 33.

35

Measures 35 and 36 of a musical score. The notation is presented on a grand staff with treble and bass clefs. The notes are color-coded: red for the right hand, blue for the left hand, and green for the right hand. The right hand part features a complex, multi-measure rest in measure 35, followed by a series of notes in measure 36. The left hand part consists of a single note in measure 35 and a series of notes in measure 36. The notes are connected by stems, and the right hand part includes a multi-measure rest in measure 35.

37

Measures 37 and 38 of a musical score. The notation is presented on a grand staff with treble and bass clefs. The notes are color-coded: red for the right hand, blue for the left hand, and green for the right hand. The right hand part features a complex, multi-measure rest in measure 37, followed by a series of notes in measure 38. The left hand part consists of a single note in measure 37 and a series of notes in measure 38. The notes are connected by stems, and the right hand part includes a multi-measure rest in measure 37. A large number '15' is visible in the center of the page, likely indicating a measure number or a page number.



39

Measures 39 and 40 of a musical score. The score is written for a grand staff (treble and bass clefs) and includes a separate staff for a 12/4 time signature. The notation is color-coded: purple for the top staff, green for the middle staff, red for the treble clef, blue for the bass clef, and orange for the bottom staff. The music features a complex, multi-layered texture with many notes and rests.

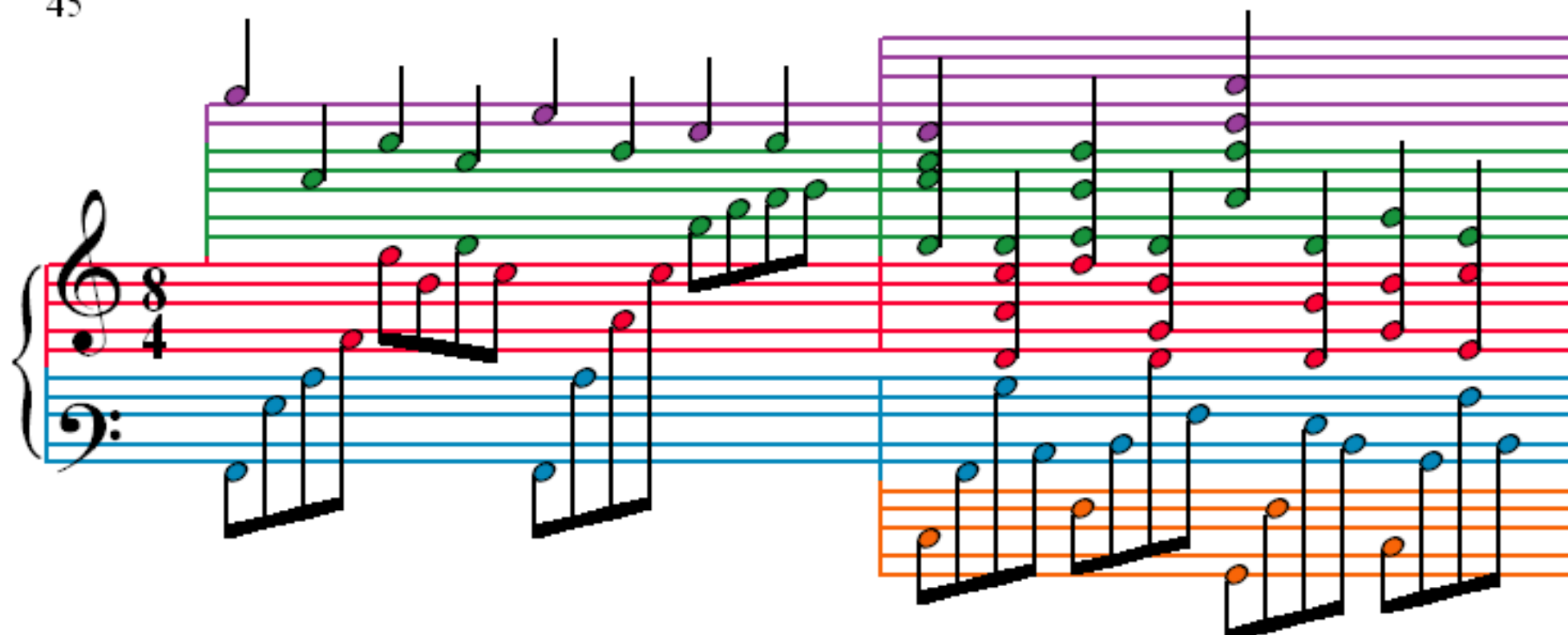
41

Measures 41 and 42 of a musical score. The notation is color-coded: purple for the top staff, green for the middle staff, red for the treble clef, blue for the bass clef, and orange for the bottom staff. The music features a complex, multi-layered texture with many notes and rests.

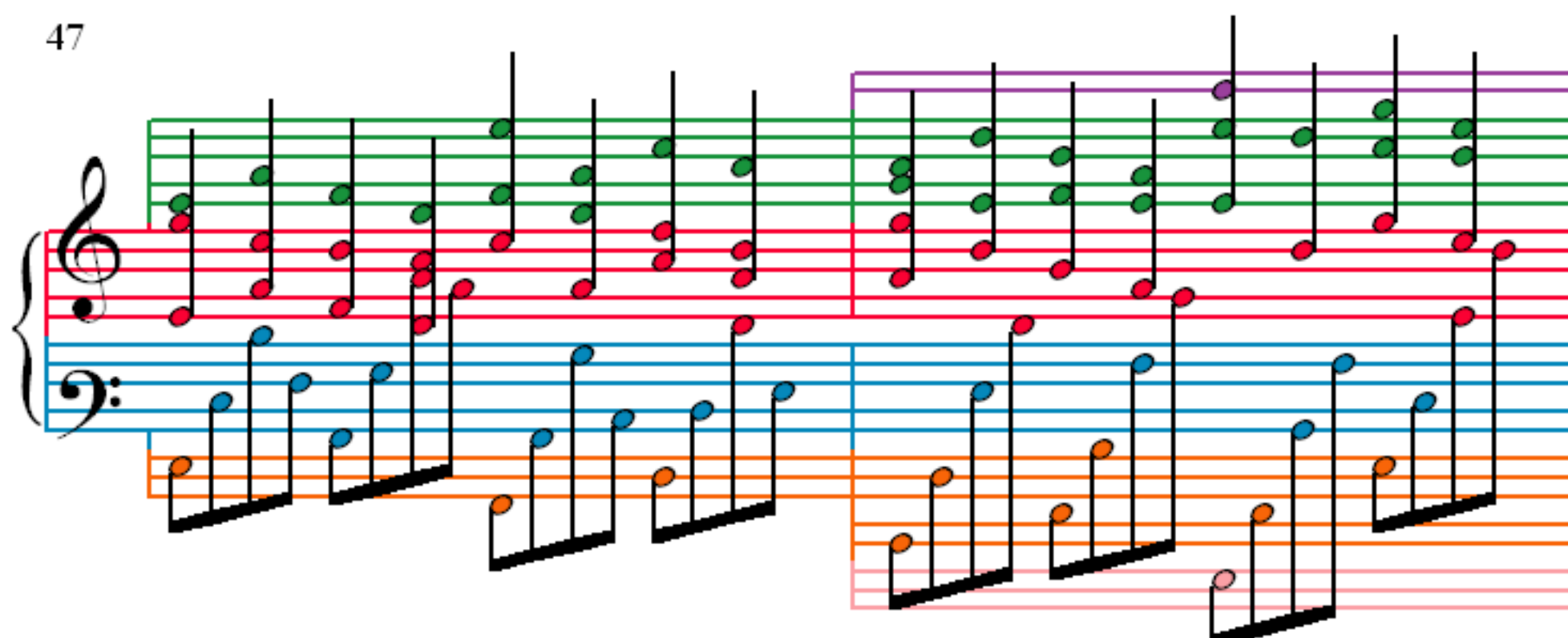
43

Measures 43 and 44 of a musical score. The notation is color-coded: purple for the top staff, green for the middle staff, red for the treble clef, blue for the bass clef, and orange for the bottom staff. The music features a complex, multi-layered texture with many notes and rests.

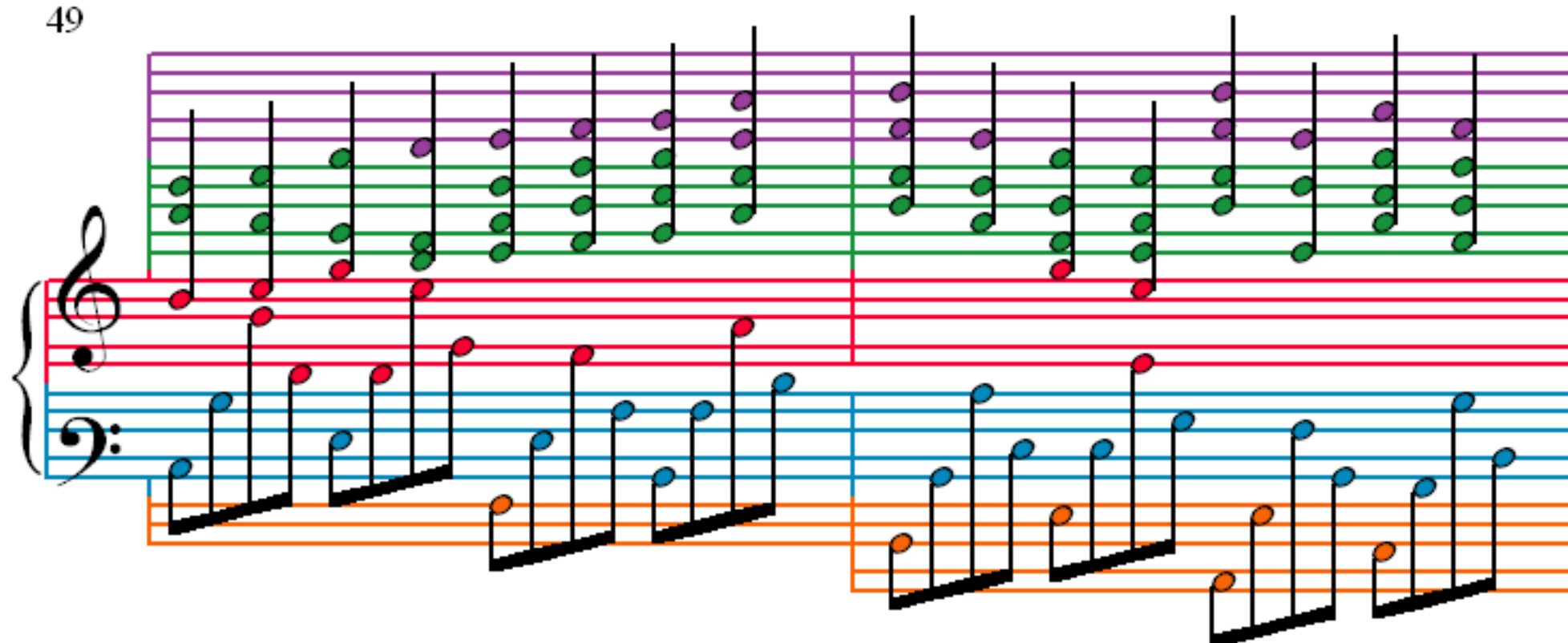
45



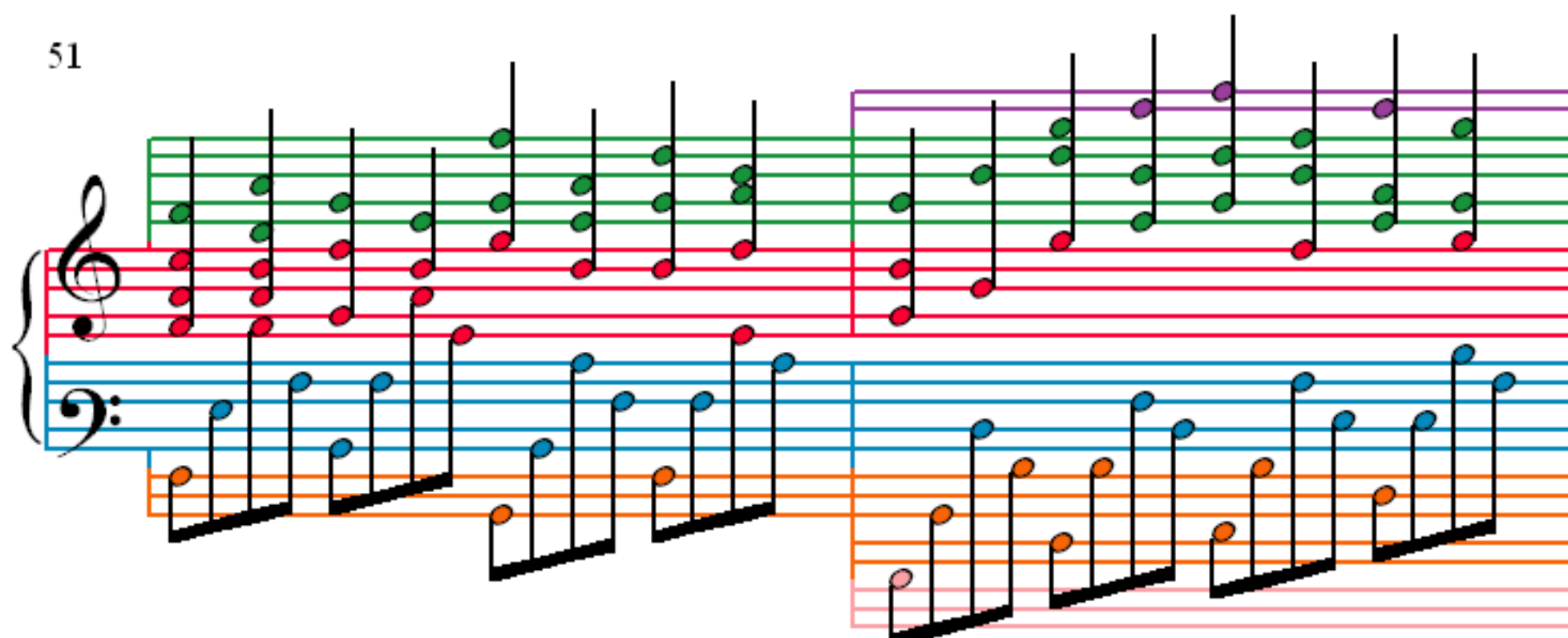
47



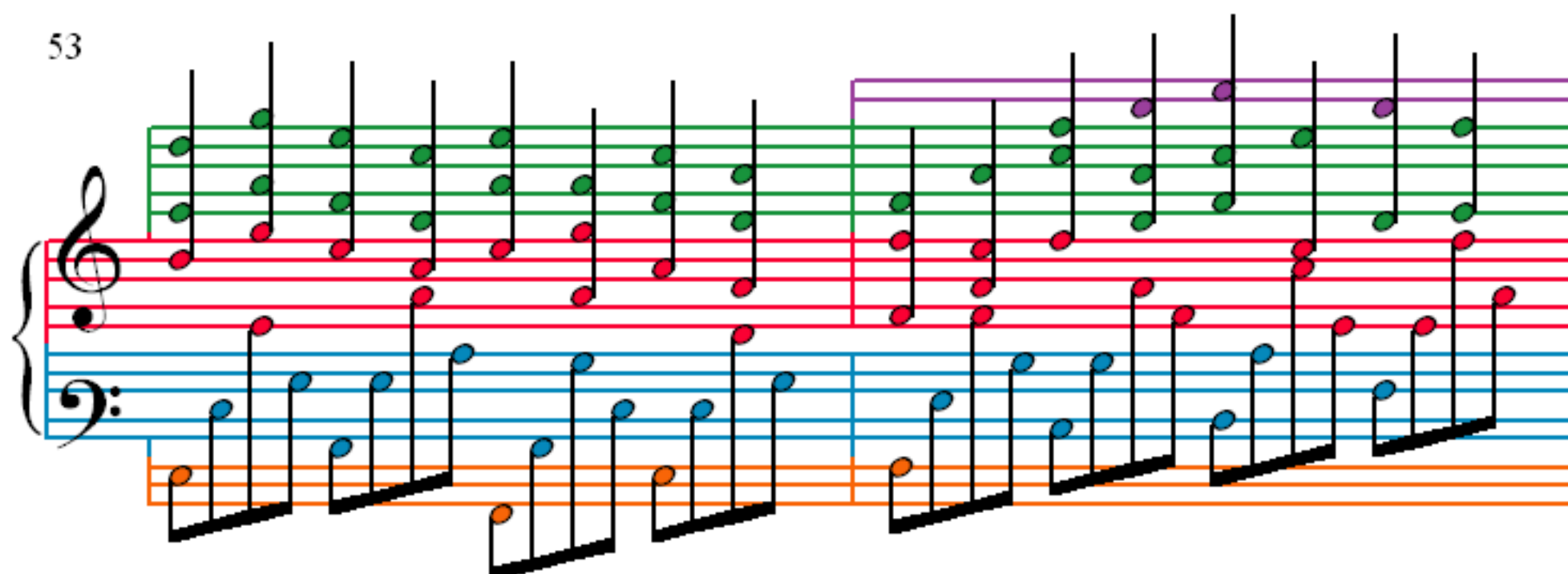
49



51



53



55

