

HWV361-score-1

Sonata for Violin and Piano HWV 361

G. F. Handel (1685–1759)

1

4

7

10

13

Measures 13-15. Treble clef: Measure 13 has two groups of eighth notes (G4, A4, B4, C5 and F4, G4, A4, B4) with green heads. Measure 14 has two groups of eighth notes (G4, A4, B4, C5 and F4, G4, A4, B4) with green heads. Measure 15 has two groups of eighth notes (G4, A4, B4, C5 and F4, G4, A4, B4) with green heads. Bass clef: Measure 13 has two groups of eighth notes (G3, A3, B3, C4) with blue heads. Measure 14 has two groups of eighth notes (G3, A3, B3, C4) with blue heads. Measure 15 has two groups of eighth notes (G3, A3, B3, C4) with blue heads.

16

Measures 16-18. Treble clef: Measure 16 has two groups of eighth notes (G4, A4, B4, C5 and F4, G4, A4, B4) with green heads. Measure 17 has two groups of eighth notes (G4, A4, B4, C5 and F4, G4, A4, B4) with green heads. Measure 18 has two groups of eighth notes (G4, A4, B4, C5 and F4, G4, A4, B4) with green heads. Bass clef: Measure 16 has two groups of eighth notes (G3, A3, B3, C4) with blue heads. Measure 17 has two groups of eighth notes (G3, A3, B3, C4) with blue heads. Measure 18 has two groups of eighth notes (G3, A3, B3, C4) with blue heads.

19

Measures 19-21. Treble clef: Measure 19 has two groups of eighth notes (G4, A4, B4, C5 and F4, G4, A4, B4) with green heads. Measure 20 has two groups of eighth notes (G4, A4, B4, C5 and F4, G4, A4, B4) with green heads. Measure 21 has two groups of eighth notes (G4, A4, B4, C5 and F4, G4, A4, B4) with green heads. Bass clef: Measure 19 has two groups of eighth notes (G3, A3, B3, C4) with blue heads. Measure 20 has two groups of eighth notes (G3, A3, B3, C4) with blue heads. Measure 21 has two groups of eighth notes (G3, A3, B3, C4) with blue heads.

22

Measures 22-24. Treble clef: Measure 22 has two groups of eighth notes (G4, A4, B4, C5 and F4, G4, A4, B4) with green heads. Measure 23 has two groups of eighth notes (G4, A4, B4, C5 and F4, G4, A4, B4) with green heads. Measure 24 has two groups of eighth notes (G4, A4, B4, C5 and F4, G4, A4, B4) with green heads. Bass clef: Measure 22 has two groups of eighth notes (G3, A3, B3, C4) with blue heads. Measure 23 has two groups of eighth notes (G3, A3, B3, C4) with blue heads. Measure 24 has two groups of eighth notes (G3, A3, B3, C4) with blue heads.

25

Measures 25-27. The right hand (treble clef) plays a continuous eighth-note pattern. The left hand (bass clef) plays a simple bass line with quarter notes and rests. The system is divided into three measures.

28

Measures 28-30. The right hand (treble clef) continues the eighth-note pattern. The left hand (bass clef) plays a bass line with quarter notes and eighth notes. The system is divided into three measures.

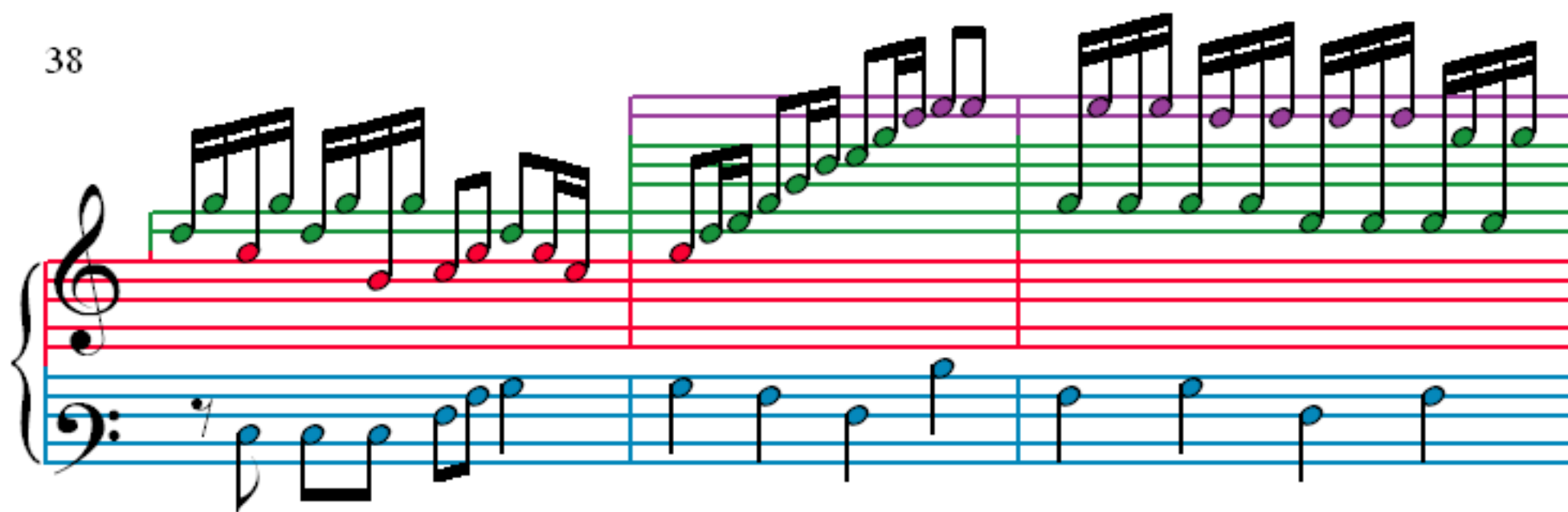
31

Measures 31-33. The right hand (treble clef) plays a pattern of eighth notes and quarter notes. The left hand (bass clef) plays a bass line with quarter notes and eighth notes. The system is divided into three measures.

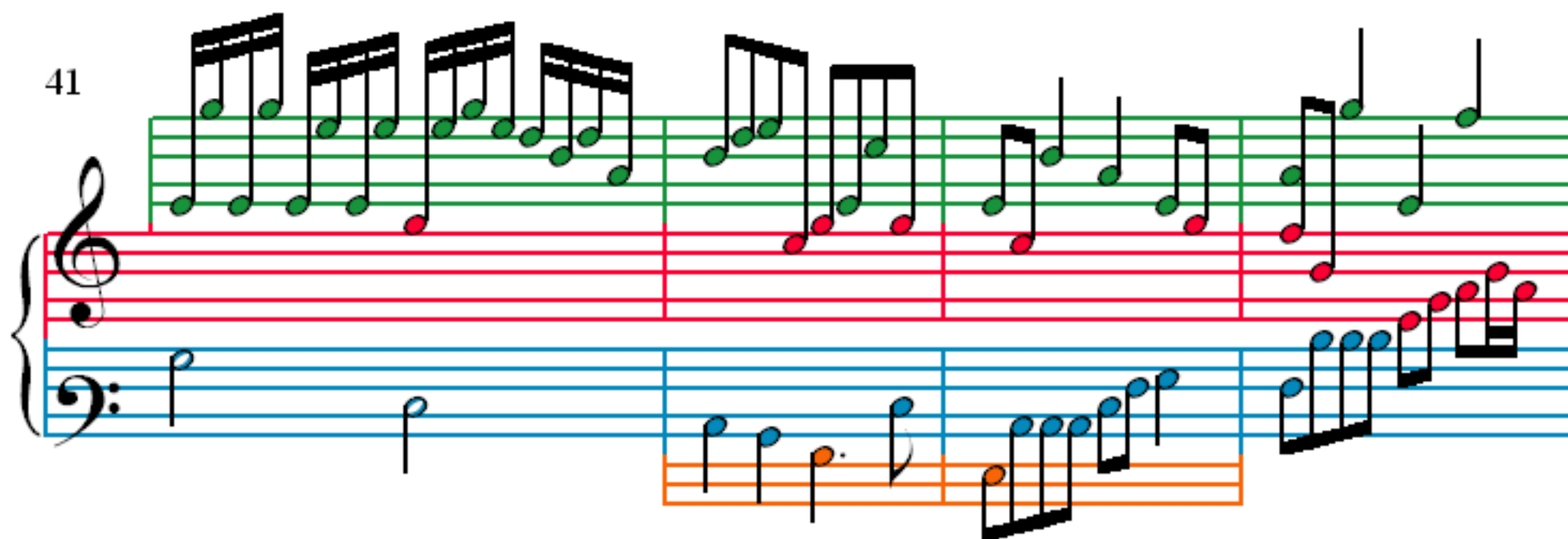
34

Measures 34-37. The right hand (treble clef) plays a pattern of eighth notes and quarter notes. The left hand (bass clef) plays a bass line with quarter notes and eighth notes. The system is divided into four measures.

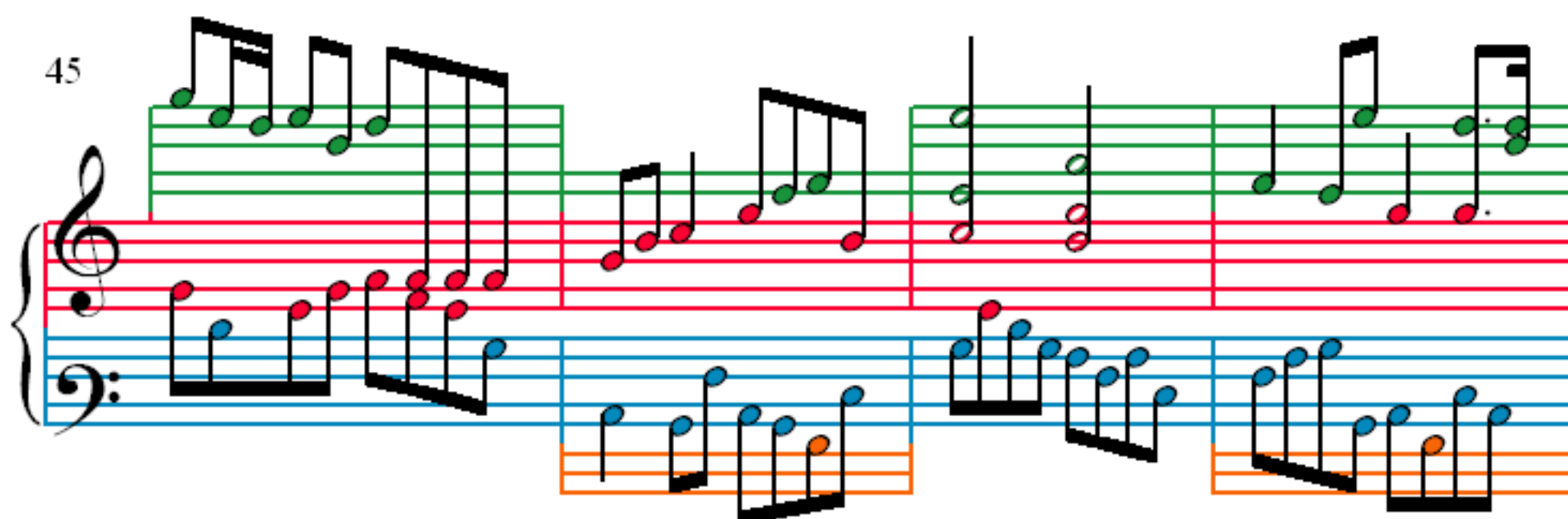
38



41



45



49

