

Lualåt (The Mountaineer's Song)

E. Grieg (1843–1907)

1

Measures 1-3 of the piece. The treble clef staff is in 2/2 time, with a key signature of one sharp (F#). Measures 1 and 2 contain whole rests. In measure 3, the treble staff has a half note G4 (green), a half note A4 (green), and a half note B4 (green). The bass staff has a half note C3 (blue), a half note D3 (blue), and a half note E3 (blue).

3

Measures 4-6. The treble staff has a half note G4 (green), a half note A4 (green), and a half note B4 (green). The bass staff has a half note C3 (blue), a half note D3 (blue), and a half note E3 (blue).

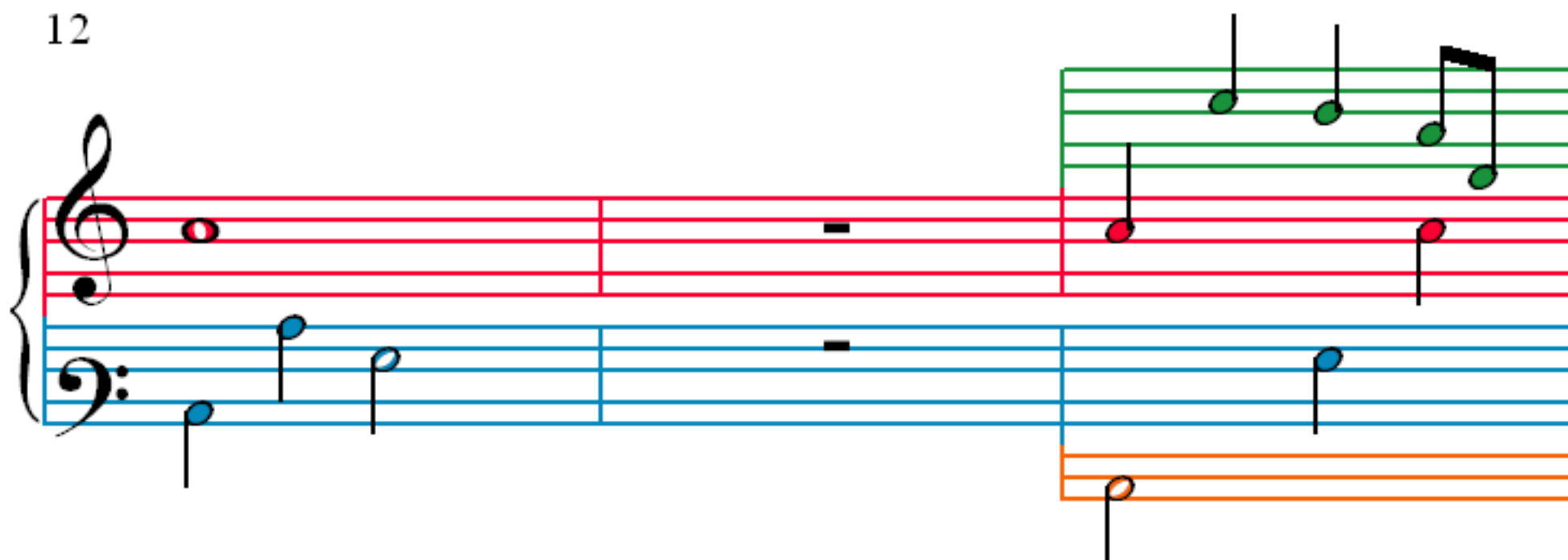
6

Measures 7-9. The treble staff has a half note G4 (green), a half note A4 (green), and a half note B4 (green). The bass staff has a half note C3 (blue), a half note D3 (blue), and a half note E3 (blue).

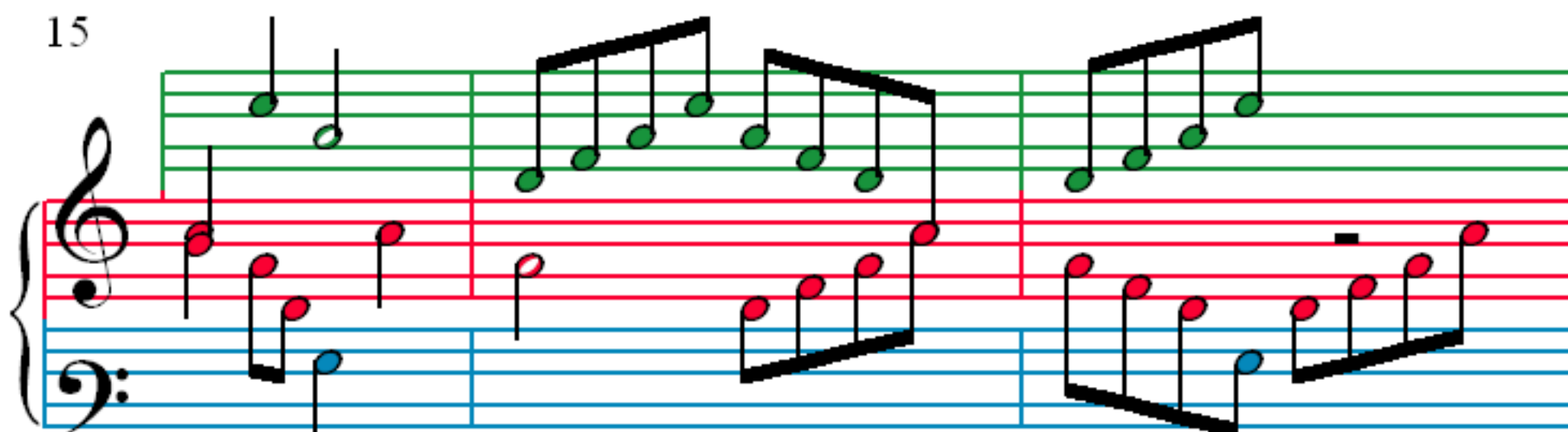
9

Measures 10-12. The treble staff has a half note G4 (green), a half note A4 (green), and a half note B4 (green). The bass staff has a half note C3 (blue), a half note D3 (blue), and a half note E3 (blue).

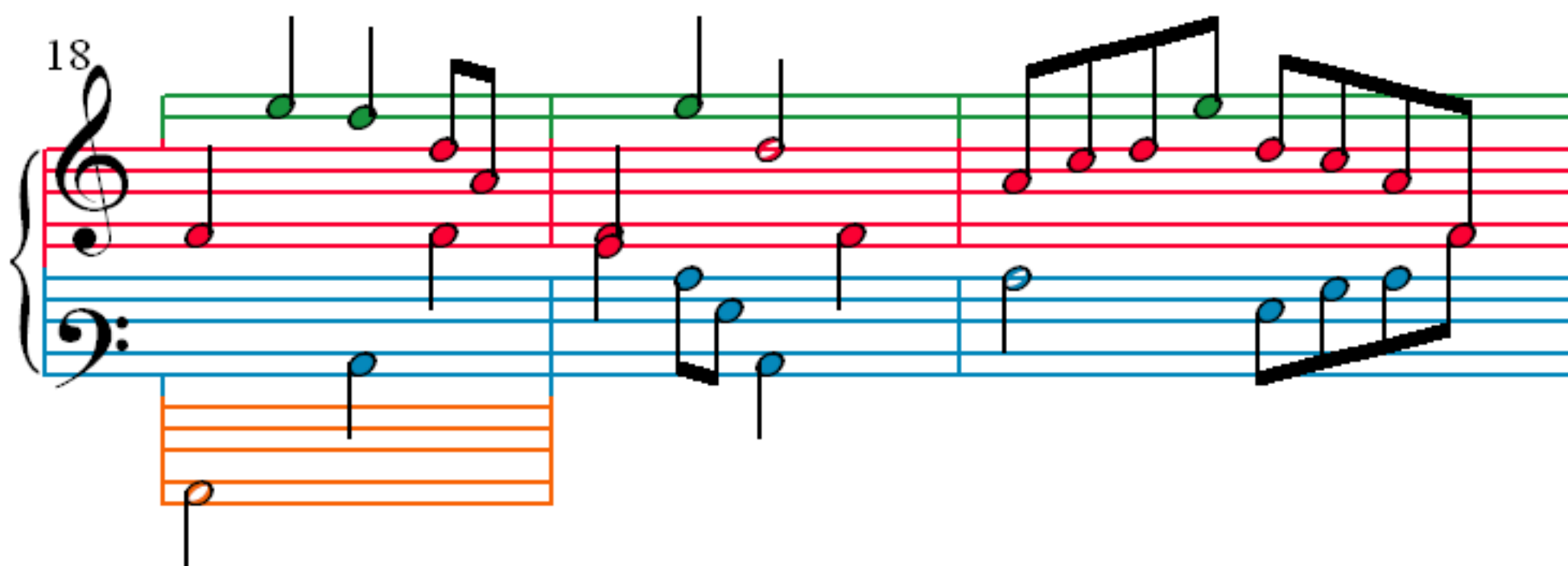
12



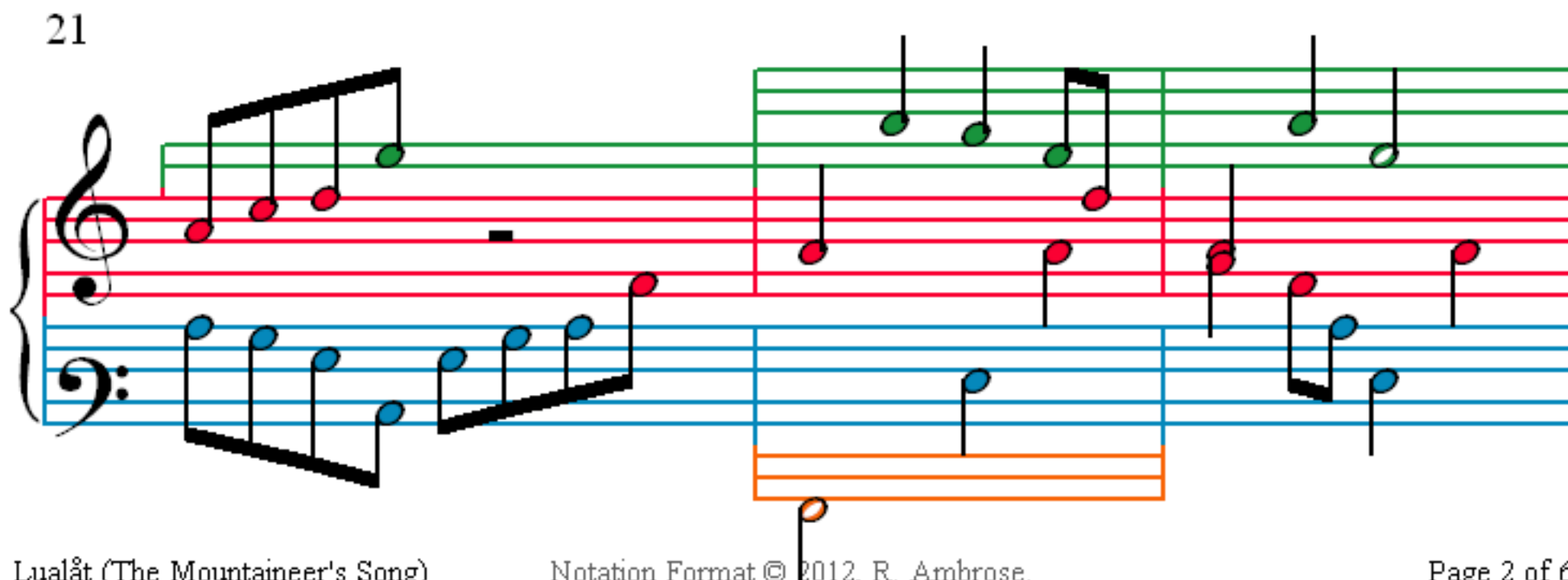
15



18



21



24

Measures 24-26 of the piano accompaniment for 'Lualât (The Mountaineer's Song)'. The score is written for piano with a grand staff (treble and bass clefs). The treble staff has a green line at the top. The bass staff has a blue line at the bottom. The music is in 2/4 time. Measure 24: Treble staff has a half note G4 (green), a half note A4 (red), and a half note B4 (red). Bass staff has a half note C4 (blue), a half note D4 (blue), and a half note E4 (blue). Measure 25: Treble staff has a half note C5 (green), a half note D5 (red), and a half note E5 (red). Bass staff has a half note F4 (blue), a half note G4 (blue), and a half note A4 (blue). Measure 26: Treble staff has a half note B4 (red), a half note A4 (red), and a half note G4 (green). Bass staff has a half note F4 (blue), a half note E4 (blue), and a half note D4 (blue). There is an orange staff at the bottom right with a half note C4 (orange) and a half note D4 (orange).

27

Measures 27-29 of the piano accompaniment. Measure 27: Treble staff has a half note G4 (green), a half note A4 (red), and a half note B4 (red). Bass staff has a half note C4 (blue), a half note D4 (blue), and a half note E4 (blue). Measure 28: Treble staff has a half note C5 (green), a half note D5 (red), and a half note E5 (red). Bass staff has a half note F4 (blue), a half note G4 (blue), and a half note A4 (blue). Measure 29: Treble staff has a half note B4 (red), a half note A4 (red), and a half note G4 (green). Bass staff has a half note F4 (blue), a half note E4 (blue), and a half note D4 (blue).

30

Measures 30-32 of the piano accompaniment. Measure 30: Treble staff has a half note G4 (green), a half note A4 (red), and a half note B4 (red). Bass staff has a half note C4 (blue), a half note D4 (blue), and a half note E4 (blue). Measure 31: Treble staff has a half note C5 (green), a half note D5 (red), and a half note E5 (red). Bass staff has a half note F4 (blue), a half note G4 (blue), and a half note A4 (blue). Measure 32: Treble staff has a half note B4 (red), a half note A4 (red), and a half note G4 (green). Bass staff has a half note F4 (blue), a half note E4 (blue), and a half note D4 (blue). There is an orange staff at the bottom left with a half note C4 (orange) and a half note D4 (orange).

33

Measures 33-35 of the piano accompaniment. Measure 33: Treble staff has a half note G4 (green), a half note A4 (red), and a half note B4 (red). Bass staff has a half note C4 (blue), a half note D4 (blue), and a half note E4 (blue). Measure 34: Treble staff has a half note C5 (green), a half note D5 (red), and a half note E5 (red). Bass staff has a half note F4 (blue), a half note G4 (blue), and a half note A4 (blue). Measure 35: Treble staff has a half note B4 (red), a half note A4 (red), and a half note G4 (green). Bass staff has a half note F4 (blue), a half note E4 (blue), and a half note D4 (blue). There is an orange staff at the bottom right with a half note C4 (orange) and a half note D4 (orange).

36

Measures 36-38 of the piece. Measure 36 features a treble staff with a descending eighth-note scale (G4, F4, E4, D4, C4) and a bass staff with an ascending eighth-note scale (C3, D3, E3, F3, G3). Measure 37 is a whole rest in both staves. Measure 38 features a treble staff with a descending eighth-note scale (G4, F4, E4, D4, C4) and a bass staff with a single eighth note (C3).

39

Measures 39-41 of the piece. Measure 39 features a treble staff with a descending eighth-note scale (G4, F4, E4, D4, C4) and a bass staff with an ascending eighth-note scale (C3, D3, E3, F3, G3). Measure 40 is a whole rest in both staves. Measure 41 features a treble staff with a descending eighth-note scale (G4, F4, E4, D4, C4) and a bass staff with a single eighth note (C3).

42

Measures 42-44 of the piece. Measure 42 features a treble staff with a descending eighth-note scale (G4, F4, E4, D4, C4) and a bass staff with an ascending eighth-note scale (C3, D3, E3, F3, G3). Measure 43 features a treble staff with a descending eighth-note scale (G4, F4, E4, D4, C4) and a bass staff with a whole rest. Measure 44 features a treble staff with a descending eighth-note scale (G4, F4, E4, D4, C4) and a bass staff with a whole rest.

45

Measures 45-47 of the piece. Measure 45 features a treble staff with a descending eighth-note scale (G4, F4, E4, D4, C4) and a bass staff with a single eighth note (C3). Measure 46 features a treble staff with a descending eighth-note scale (G4, F4, E4, D4, C4) and a bass staff with a single eighth note (C3). Measure 47 features a treble staff with a descending eighth-note scale (G4, F4, E4, D4, C4) and a bass staff with a whole rest.

48

Measures 48-50. Treble clef: Measure 48 has a green eighth note on G4, a red eighth note on A4, a green eighth note on B4, a red eighth note on C5, a green eighth note on D5, a red eighth note on E5, a green eighth note on F5, and a red eighth note on G5. Measure 49 has a green half note on G4. Measure 50 has a green quarter note on G4, a red quarter note on A4, and a green quarter note on B4. Bass clef: Measure 48 has a blue half note on C3. Measure 49 has a blue half note on C3. Measure 50 has a blue half note on C3.

51

Measures 51-53. Treble clef: Measure 51 has a red half note on C4. Measure 52 has a red half note on C4. Measure 53 has a red quarter note on G4, a green quarter note on A4, a red quarter note on B4, and a green quarter note on C5. Bass clef: Measure 51 has a blue half note on C3. Measure 52 has a blue half note on C3. Measure 53 has a blue half note on C3.

54

Measures 54-56. Treble clef: Measure 54 has a green eighth note on G4, a red eighth note on A4, a green eighth note on B4, and a red eighth note on C5. Measure 55 has a green eighth note on D5, a red eighth note on E5, a green eighth note on F5, and a red eighth note on G5. Measure 56 has a green eighth note on G5, a red eighth note on A5, a green eighth note on B5, and a red eighth note on C6. Bass clef: Measure 54 has a blue half note on C3. Measure 55 has a blue half note on C3. Measure 56 has a blue half note on C3.

57

Measures 57-59. Treble clef: Measure 57 has a green quarter note on G4, a red quarter note on A4, a green quarter note on B4, and a red quarter note on C5. Measure 58 has a green quarter note on D5, a red quarter note on E5, a green quarter note on F5, and a red quarter note on G5. Measure 59 has a green quarter note on G5, a red quarter note on A5, a green quarter note on B5, and a red quarter note on C6. Bass clef: Measure 57 has a blue half note on C3. Measure 58 has a blue half note on C3. Measure 59 has a blue half note on C3.

60

Measures 60-62. Treble clef: Measure 60 has a green staff with eighth notes (G4, A4, B4, C5) and a red staff with quarter notes (G4, A4, B4, C5). Measure 61 has a red staff with quarter notes (D5, C5, B4, A4). Measure 62 has a red staff with quarter notes (G4, F4, E4, D4). Bass clef: Measure 60 has a blue staff with quarter notes (G3, A3, B3, C4). Measure 61 has a blue staff with quarter notes (D4, E4, F4, G4). Measure 62 has a blue staff with quarter notes (A4, B4, C5, D5).

63

Measures 63-66. Treble clef: Measure 63 has a red staff with a whole note (G4) and a purple staff with eighth notes (G4, A4, B4, C5). Measure 64 has a red staff with a whole rest and a purple staff with eighth notes (D5, C5, B4, A4). Measure 65 has a red staff with a whole rest and a purple staff with eighth notes (G4, F4, E4, D4). Measure 66 has a red staff with a whole rest and a purple staff with eighth notes (C5, B4, A4, G4). Bass clef: Measure 63 has a blue staff with quarter notes (G3, A3, B3, C4). Measure 64 has a blue staff with a whole rest. Measure 65 has a blue staff with a whole rest. Measure 66 has a blue staff with a whole note (G3).

67

Measures 67-70. Treble clef: Measure 67 has a purple staff with eighth notes (G4, A4, B4, C5) and a red staff with a whole note (G4). Measure 68 has a purple staff with eighth notes (D5, C5, B4, A4) and a red staff with a whole note (F4). Measure 69 has a purple staff with eighth notes (G4, F4, E4, D4) and a red staff with a whole note (E4). Measure 70 has a purple staff with eighth notes (C5, B4, A4, G4) and a red staff with a whole note (D4). Bass clef: Measure 67 has a blue staff with a whole rest. Measure 68 has a blue staff with a whole rest. Measure 69 has a blue staff with a whole rest. Measure 70 has an orange staff with a whole note (G3).

71

Measures 71-74. Treble clef: Measure 71 has a red staff with a whole note (G4) and a blue staff with quarter notes (G4, A4, B4, C5). Measure 72 has a red staff with a whole rest and a blue staff with quarter notes (D5, C5, B4, A4). Measure 73 has a red staff with a whole rest and a blue staff with quarter notes (G4, F4, E4, D4). Measure 74 has a red staff with a whole rest and a blue staff with quarter notes (C5, B4, A4, G4). Bass clef: Measure 71 has a blue staff with quarter notes (G3, A3, B3, C4). Measure 72 has a blue staff with a whole rest. Measure 73 has a blue staff with a whole rest. Measure 74 has an orange staff with quarter notes (D4, E4, F4, G4).