

Dussek Op46 3

Six sonates faciles pour le Piano Forte (III)

J. L. Dussek (1760–1812)

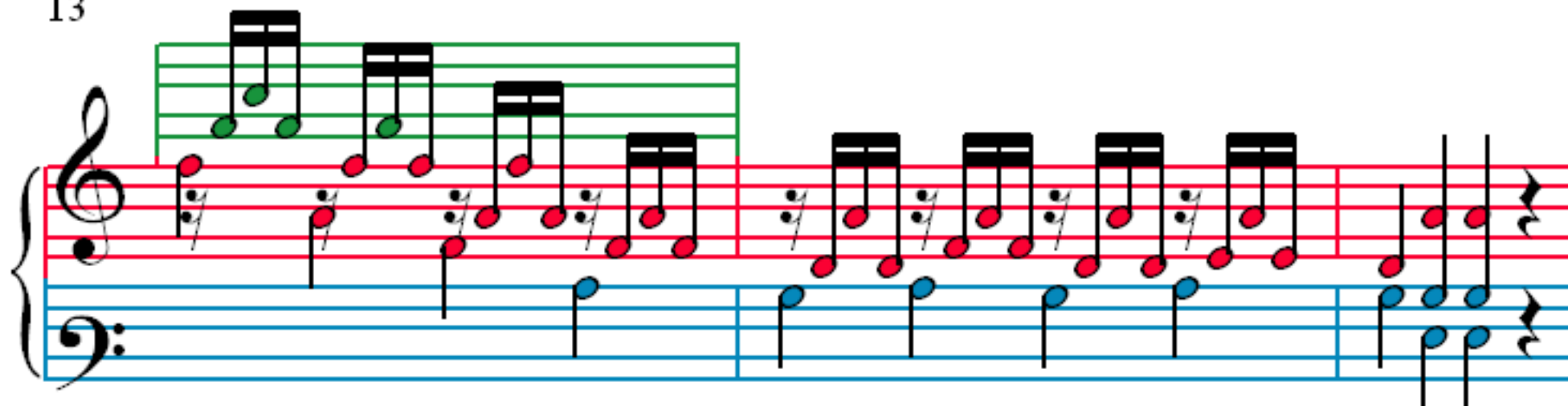
1

4

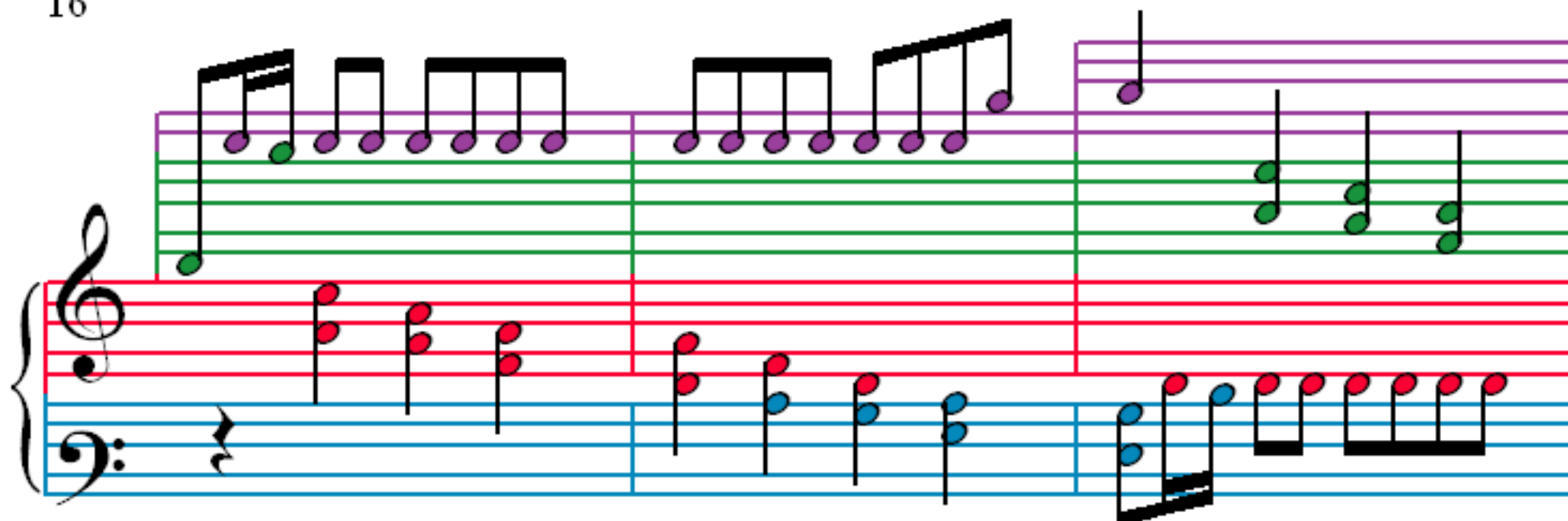
7

10

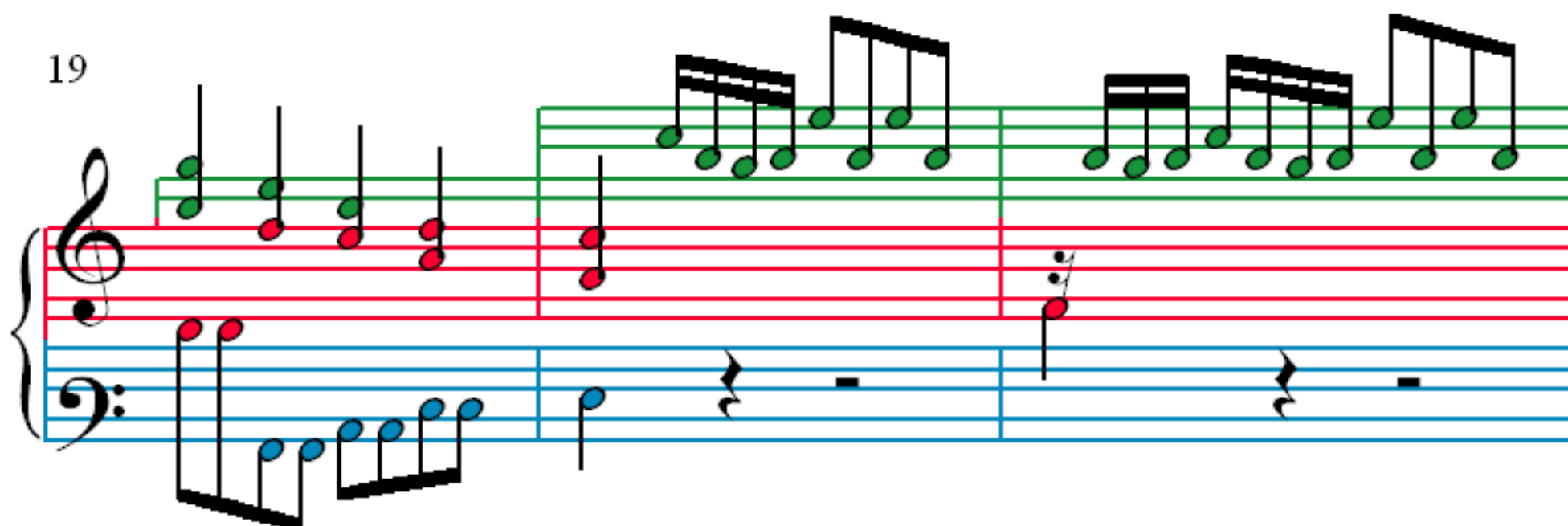
13



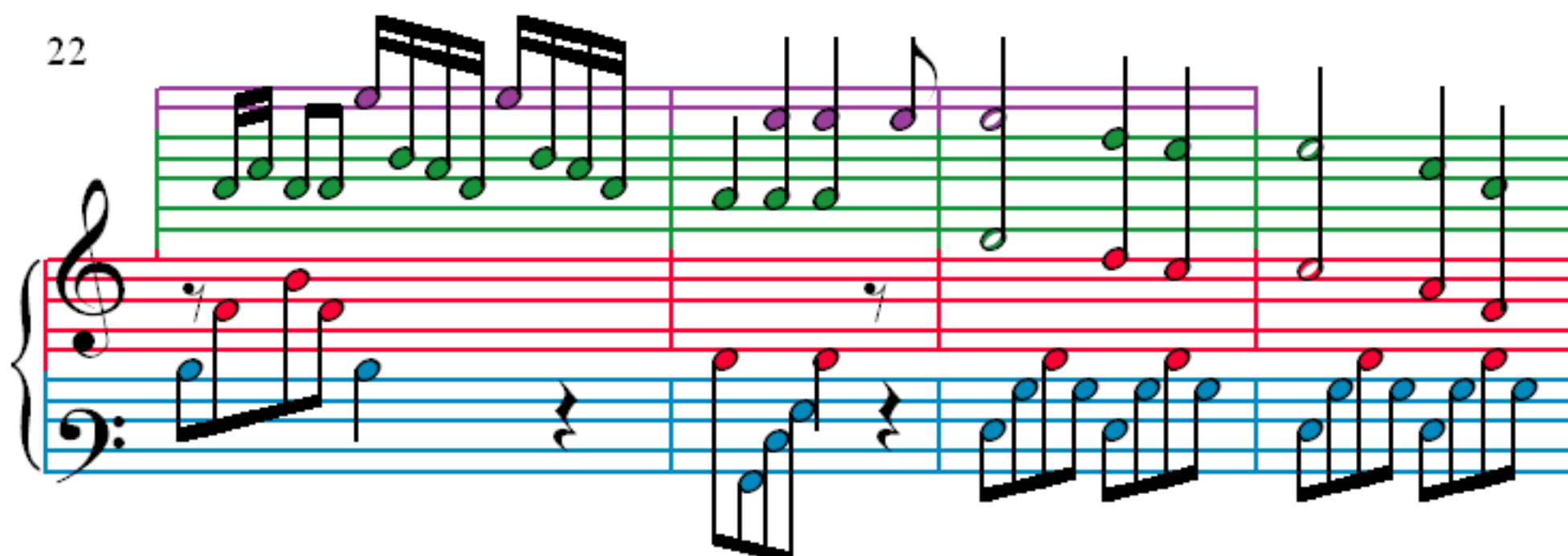
16



19



22



26

29

32

35

39

Measures 39-41 of a musical score. The system consists of a grand staff with a treble clef and a bass clef. The treble staff has a purple staff line above it. The bass staff has a blue staff line below it. The treble staff contains a melody with a half note, a quarter note, and a half note. The bass staff contains a melody with a half note, a quarter note, and a half note. The purple staff contains a melody with a half note, a quarter note, and a half note. The blue staff contains a melody with a half note, a quarter note, and a half note.

42

Measures 42-44 of a musical score. The system consists of a grand staff with a treble clef and a bass clef. The treble staff has a purple staff line above it. The bass staff has a blue staff line below it. The treble staff contains a melody with a half note, a quarter note, and a half note. The bass staff contains a melody with a half note, a quarter note, and a half note. The purple staff contains a melody with a half note, a quarter note, and a half note. The blue staff contains a melody with a half note, a quarter note, and a half note.

45

Measures 45-47 of a musical score. The system consists of a grand staff with a treble clef and a bass clef. The treble staff has a purple staff line above it. The bass staff has a blue staff line below it. The treble staff contains a melody with a half note, a quarter note, and a half note. The bass staff contains a melody with a half note, a quarter note, and a half note. The purple staff contains a melody with a half note, a quarter note, and a half note. The blue staff contains a melody with a half note, a quarter note, and a half note.

48

Measures 48-50 of a musical score. The system consists of a grand staff with a treble clef and a bass clef. The treble staff has a purple staff line above it. The bass staff has a blue staff line below it. The treble staff contains a melody with a half note, a quarter note, and a half note. The bass staff contains a melody with a half note, a quarter note, and a half note. The purple staff contains a melody with a half note, a quarter note, and a half note. The blue staff contains a melody with a half note, a quarter note, and a half note.

52

Measures 52-54. Treble clef: Measure 52 has a slur over a group of green notes (F4, G4, A4, B4, C5) and a red note (D5). Measure 53 has a red note (D5) and a green note (C5). Measure 54 has a green note (C5) and a red note (D5). Bass clef: Measure 52 has a blue note (F3) and a blue note (A3). Measure 53 has a blue note (A3) and a blue note (B3). Measure 54 has a blue note (B3) and a blue note (C4).

55

Measures 55-57. Treble clef: Measure 55 has a green note (C5) and a red note (D5). Measure 56 has a green note (D5) and a red note (E5). Measure 57 has a green note (E5) and a red note (F5). Bass clef: Measure 55 has a blue note (F3) and a blue note (A3). Measure 56 has a blue note (A3) and a blue note (B3). Measure 57 has a blue note (B3) and a blue note (C4).

58

Measures 58-60. Treble clef: Measure 58 has a green note (C5) and a green note (D5). Measure 59 has a green note (D5) and a green note (E5). Measure 60 has a green note (E5) and a green note (F5). Bass clef: Measure 58 has a blue note (F3) and a blue note (A3). Measure 59 has a blue note (A3) and a blue note (B3). Measure 60 has a blue note (B3) and a blue note (C4).

61

Measures 61-64. Treble clef: Measure 61 has a green note (C5) and a red note (D5). Measure 62 has a green note (D5) and a red note (E5). Measure 63 has a green note (E5) and a red note (F5). Measure 64 has a green note (F5) and a red note (G5). Bass clef: Measure 61 has a blue note (F3) and a blue note (A3). Measure 62 has a blue note (A3) and a blue note (B3). Measure 63 has a blue note (B3) and a blue note (C4). Measure 64 has a blue note (C4) and a blue note (D4).

65

Measures 65-67 of a musical score. The system consists of a grand staff with a treble clef and a bass clef. The treble staff has a purple staff line above it. The notes are color-coded: purple for the upper staff, green for the treble staff, red for the middle staff, and blue for the bass staff. The melody in the treble staff features eighth-note patterns, while the bass staff has a simple accompaniment of eighth notes.

68

Measures 68-70 of a musical score. The system consists of a grand staff with a treble clef and a bass clef. The treble staff has a purple staff line above it. The notes are color-coded: purple for the upper staff, green for the treble staff, red for the middle staff, and blue for the bass staff. The melody in the treble staff features eighth-note patterns, while the bass staff has a simple accompaniment of eighth notes.

71

Measures 71-73 of a musical score. The system consists of a grand staff with a treble clef and a bass clef. The treble staff has a purple staff line above it. The notes are color-coded: purple for the upper staff, green for the treble staff, red for the middle staff, and blue for the bass staff. The melody in the treble staff features eighth-note patterns, while the bass staff has a simple accompaniment of eighth notes.

74

Measures 74-76 of a musical score. The system consists of a grand staff with a treble clef and a bass clef. The treble staff has a purple staff line above it. The notes are color-coded: purple for the upper staff, green for the treble staff, red for the middle staff, and blue for the bass staff. The melody in the treble staff features eighth-note patterns, while the bass staff has a simple accompaniment of eighth notes.