

Dussek Op46 2-1

Six sonates faciles pour le Piano Forte (II)

J. L. Dussek (1760–1812)

1

5

9

13

Detailed description: The image displays four systems of musical notation, each representing a different exercise (1, 5, 9, and 13) from the 'Six sonates faciles pour le Piano Forte (II)' by J. L. Dussek. Each system consists of a grand staff with a treble clef and a bass clef. The time signature is 2/4. The notes are primarily green, with some purple notes. The exercises are numbered 1, 5, 9, and 13, indicating they are part of a larger set. The notation is simplified, suitable for beginners.

17

Measures 17-20: Treble clef staff with green background. Measures 17 and 18 contain purple notes (eighth and sixteenth notes). Measures 19 and 20 contain green notes (eighth and sixteenth notes). The bass clef staff is empty.

21

Measures 21-24: Treble clef staff with green background. Measures 21 and 22 contain purple notes (eighth and sixteenth notes). Measures 23 and 24 contain green notes (eighth and sixteenth notes). The bass clef staff is empty.

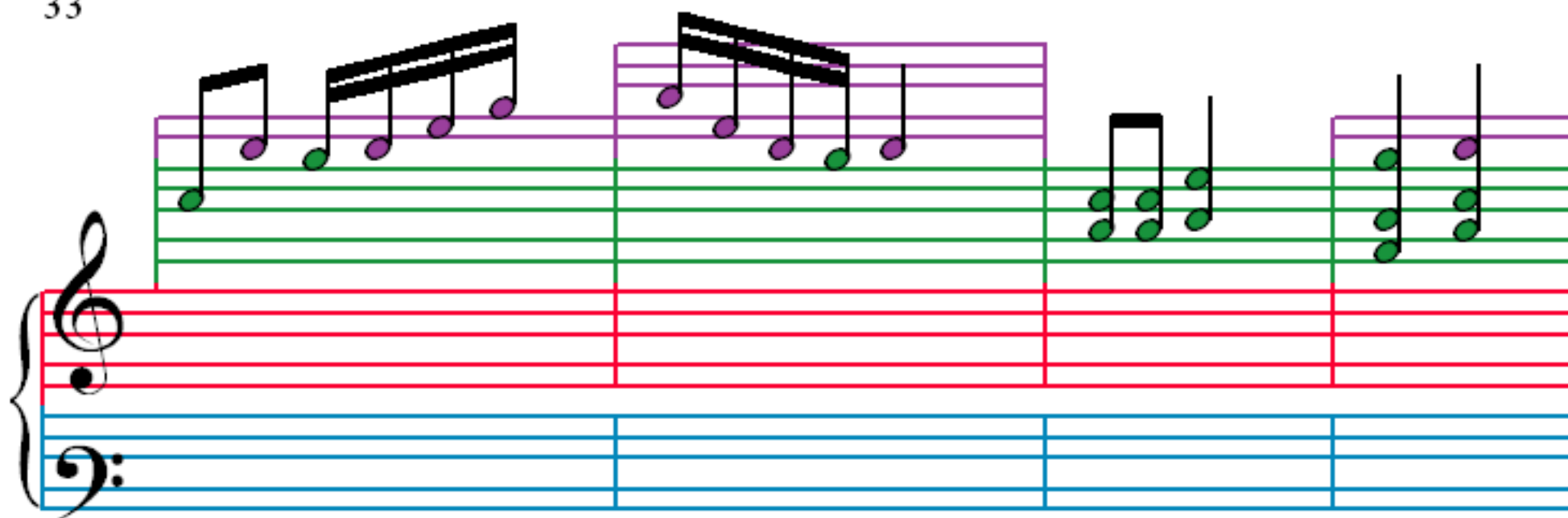
25

Measures 25-28: Treble clef staff with green background. Measures 25 and 26 contain purple notes (eighth and sixteenth notes). Measures 27 and 28 contain green notes (eighth and sixteenth notes). The bass clef staff is empty.

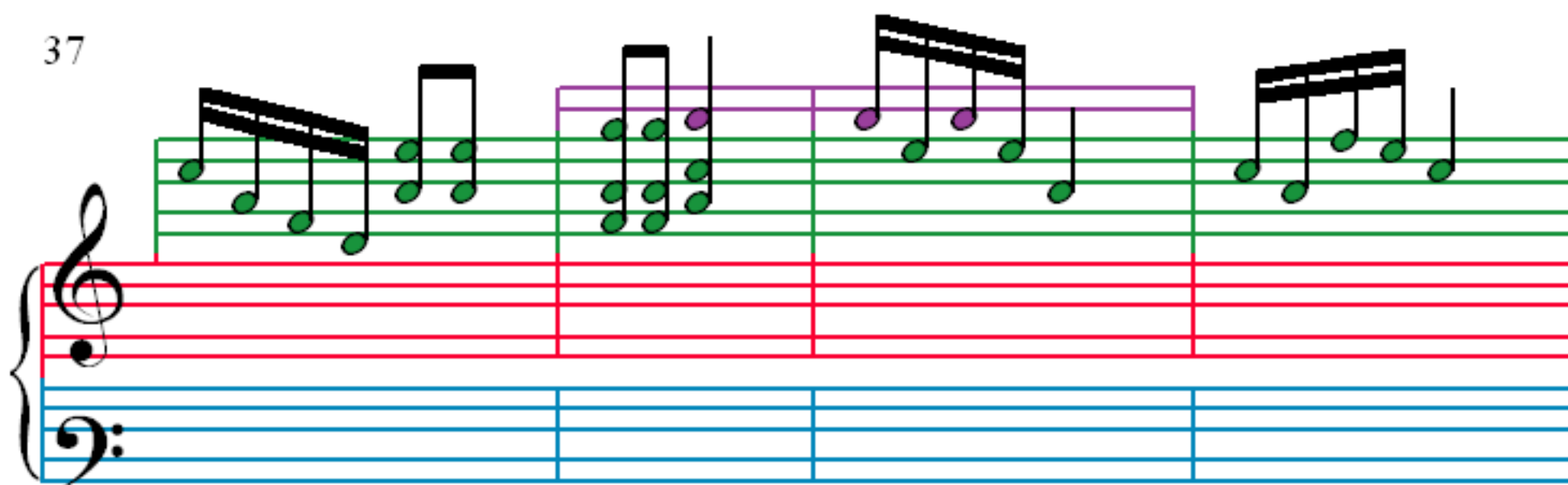
29

Measures 29-32: Treble clef staff with green background. Measures 29 and 30 contain purple notes (eighth and sixteenth notes). Measures 31 and 32 contain green notes (eighth and sixteenth notes). The bass clef staff is empty.

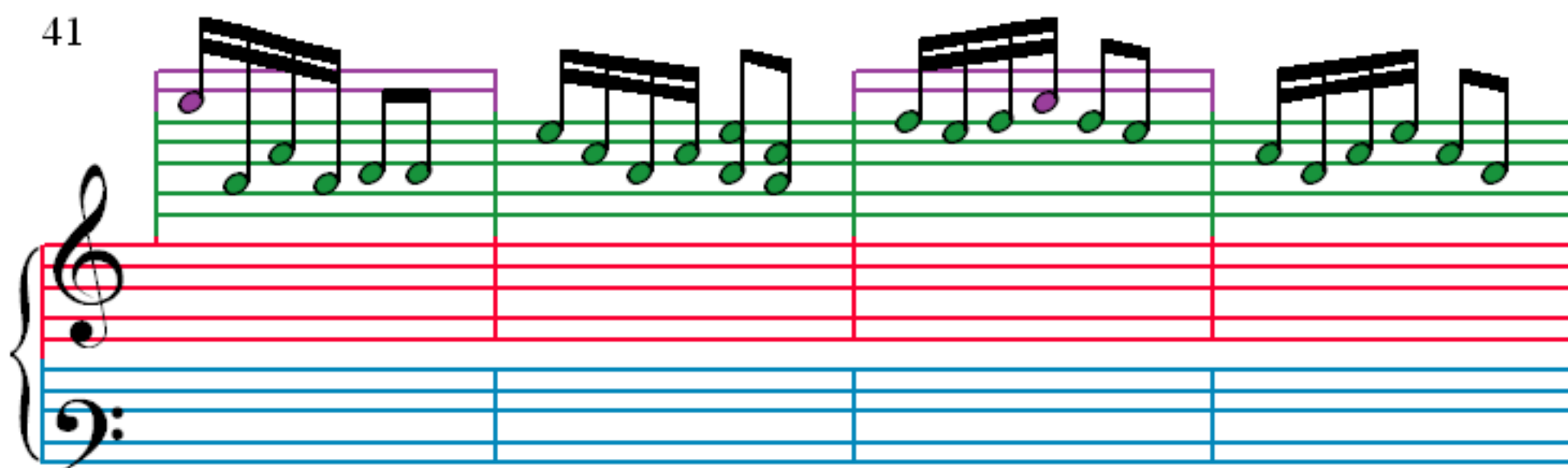
33



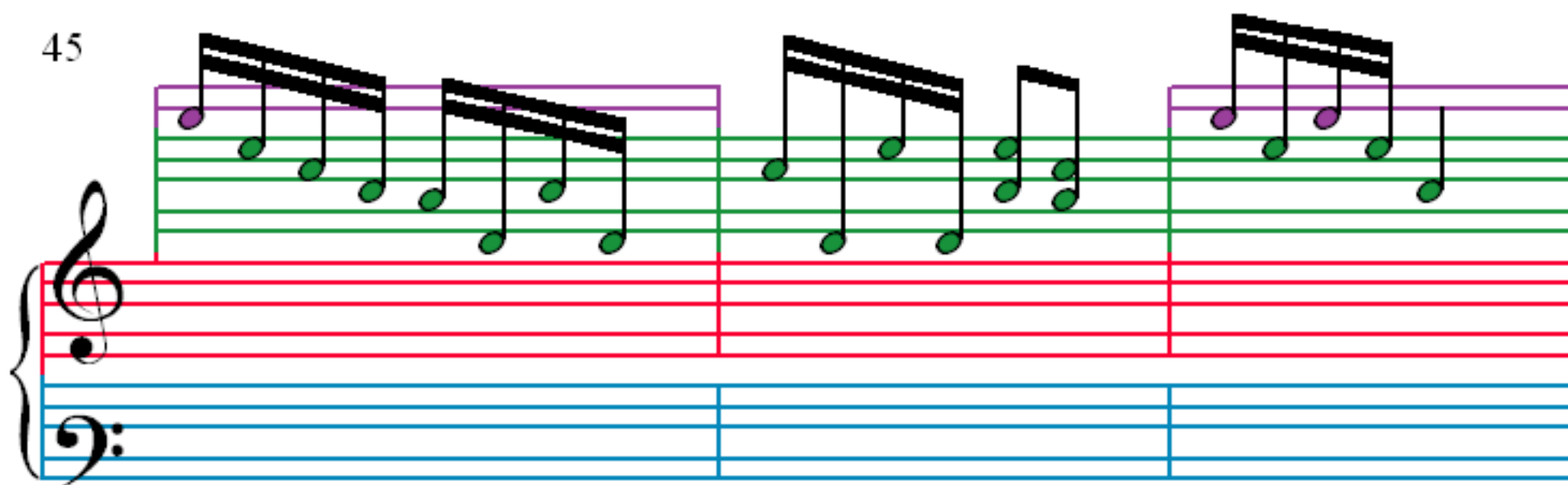
37



41



45



48

Measures 48-50. Treble clef. Measure 48: G4, A4, B4, C5, B4, A4, G4. Measure 49: G4, A4, B4, C5, B4, A4, G4. Measure 50: G4, A4, B4, C5, B4, A4, G4. Bass clef is empty.

51

Measures 51-54. Treble clef. Measure 51: G4, A4, B4, C5, B4, A4, G4. Measure 52: G4, A4, B4, C5, B4, A4, G4. Measure 53: G4, A4, B4, C5, B4, A4, G4. Measure 54: G4, A4, B4, C5, B4, A4, G4. Bass clef is empty.

55

Measures 55-58. Treble clef. Measure 55: G4, A4, B4, C5, B4, A4, G4. Measure 56: G4, A4, B4, C5, B4, A4, G4. Measure 57: G4, A4, B4, C5, B4, A4, G4. Measure 58: G4, A4, B4, C5, B4, A4, G4. Bass clef is empty.

59

Measures 59-62. Treble clef. Measure 59: G4, A4, B4, C5, B4, A4, G4. Measure 60: G4, A4, B4, C5, B4, A4, G4. Measure 61: G4, A4, B4, C5, B4, A4, G4. Measure 62: G4, A4, B4, C5, B4, A4, G4. Bass clef is empty.