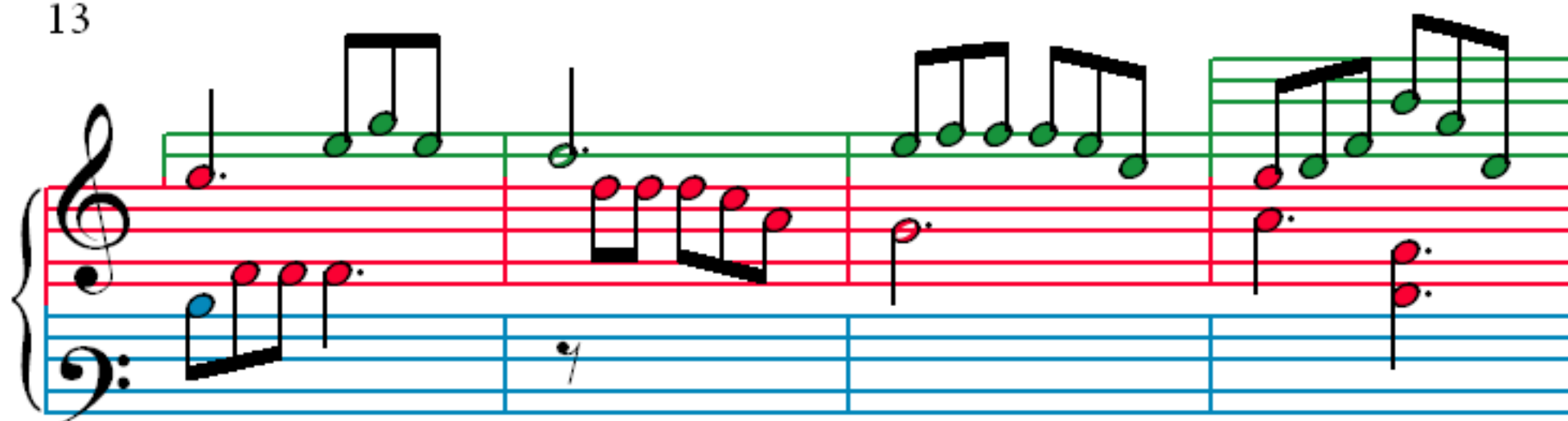


# La Pastorale

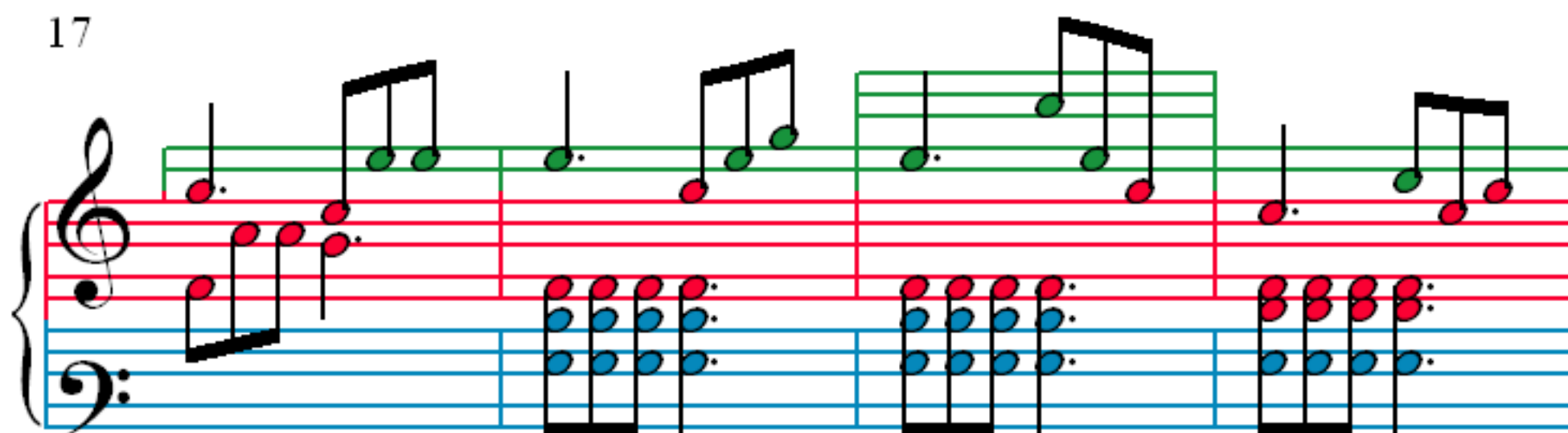
J. F. F. Burgmüller (1806–1874)

The image displays the first nine measures of the piano piece 'La Pastorale' by J. F. F. Burgmüller. The score is written for piano in 3/4 time, featuring a treble and bass staff joined by a brace. The key signature is one flat (B-flat major or D minor). The notation includes various musical symbols: treble and bass clefs, a 3/4 time signature, a key signature of one flat, and a variety of note values (quarter, eighth, and sixteenth notes). The notes are color-coded: red for the right hand and blue for the left hand. Measure numbers 1, 3, 6, and 9 are indicated at the beginning of their respective systems. The piece begins with a treble clef, a key signature of one flat, and a 3/4 time signature. The first system (measures 1-2) shows a treble staff with a series of eighth notes and a bass staff with a whole rest. The second system (measures 3-5) continues the melody in the treble and features a steady eighth-note accompaniment in the bass. The third system (measures 6-8) shows the melody moving to the bass staff while the treble provides a steady accompaniment. The fourth system (measures 9-11) concludes the excerpt with a final chord in the treble and a descending eighth-note line in the bass.

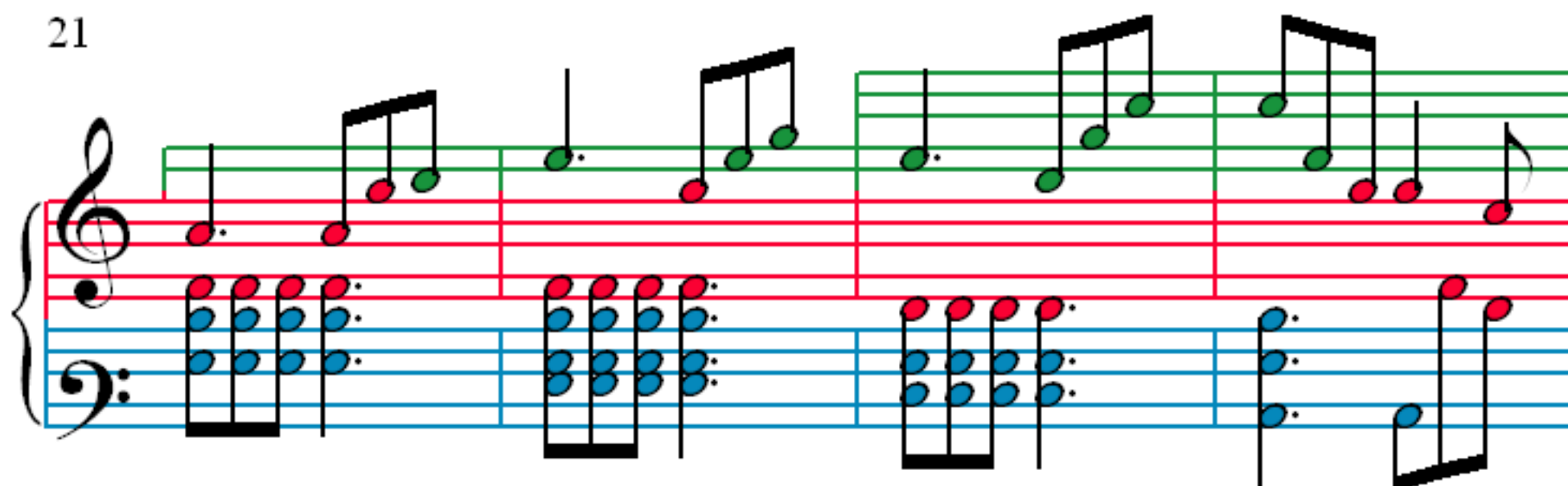
13



17



21



25

