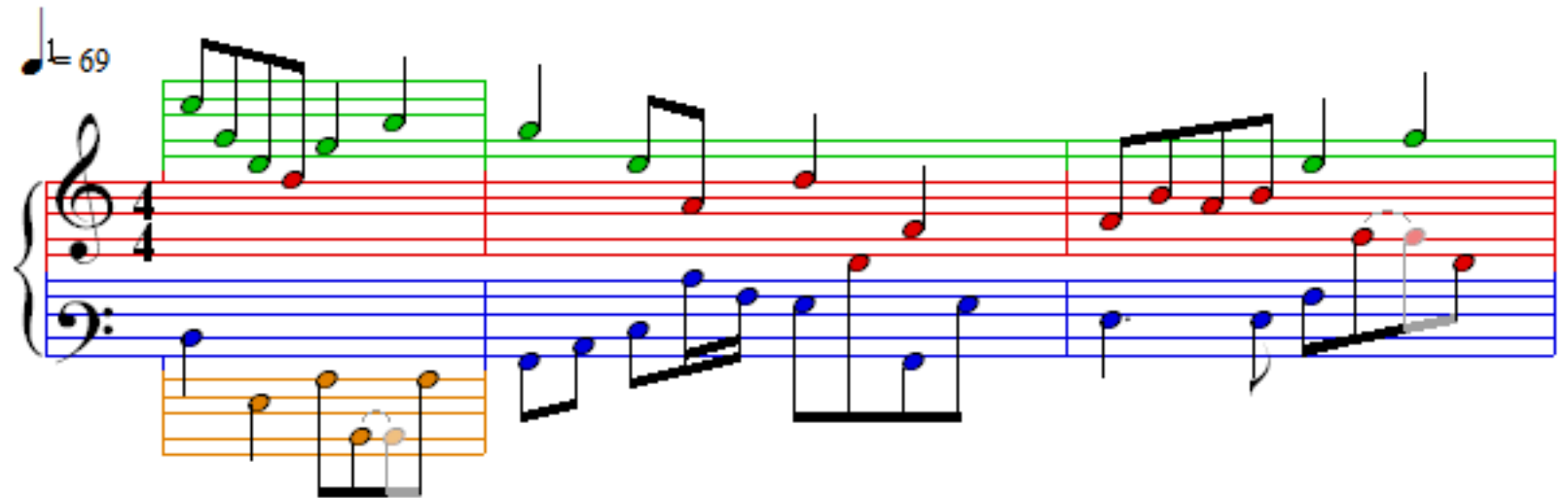


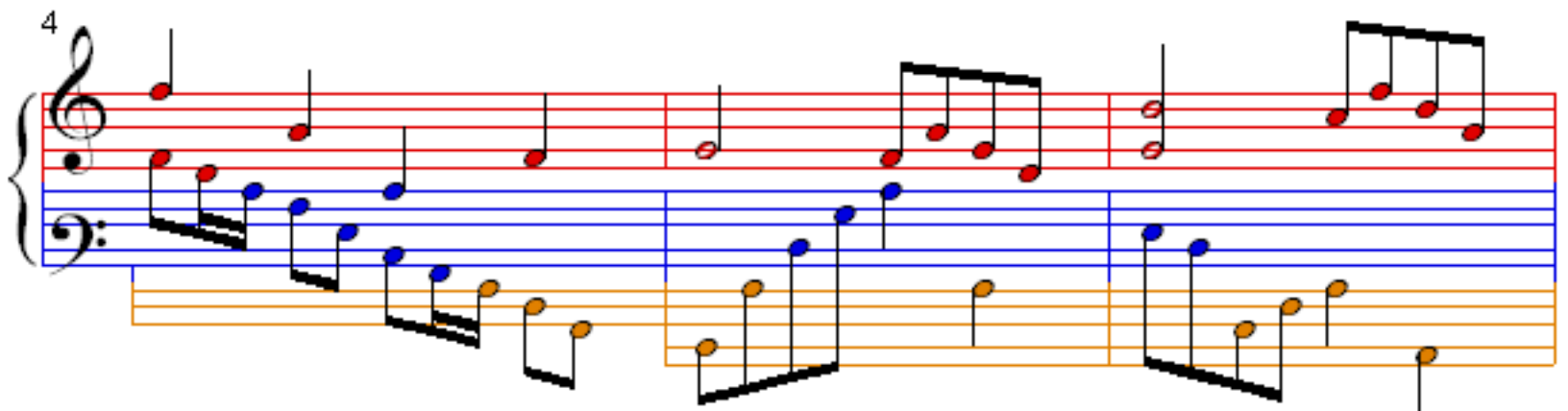
Smoke Gets in Your Eyes

Jerome Kern

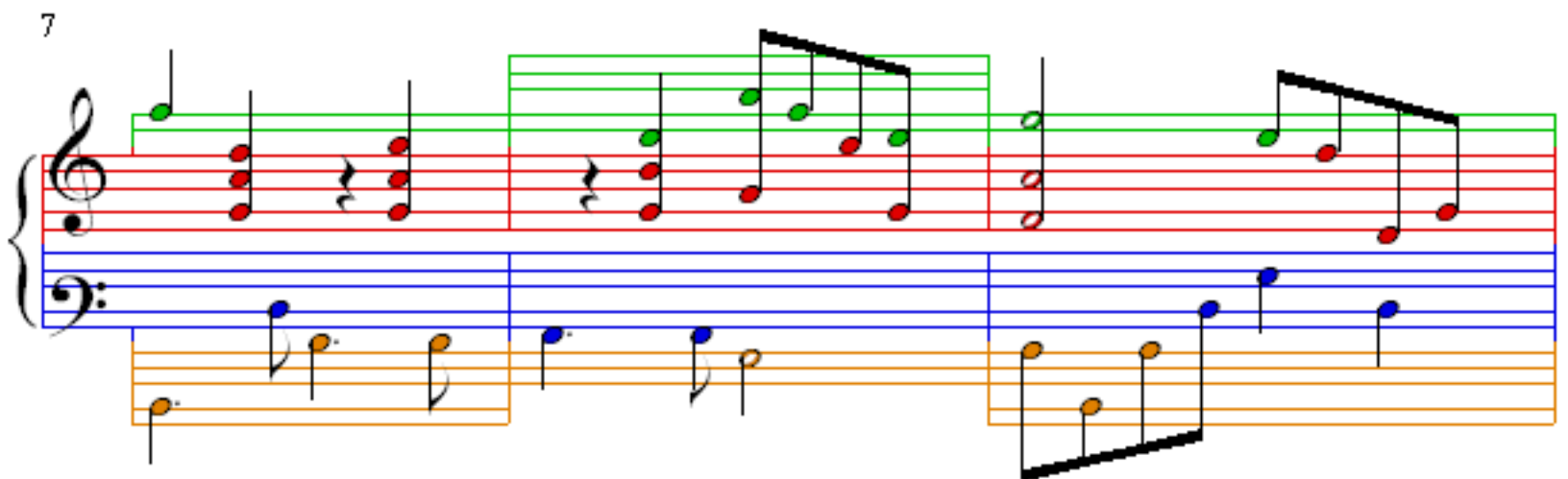
♩ = 69



4



7



10

Measures 10-12 of the musical score. The treble staff contains red notes, the bass staff contains blue notes, and a lower staff contains orange notes. Measure 10 features a green highlight on the treble staff. Measure 11 features a blue highlight on the bass staff. Measure 12 features a grey highlight on the treble staff.

13

Measures 13-15 of the musical score. The treble staff contains red notes, the bass staff contains blue notes, and a lower staff contains orange notes. Measure 13 features a green highlight on the treble staff. Measure 14 features a blue highlight on the bass staff. Measure 15 features a red highlight on the treble staff.

16

Measures 16-18 of the musical score. The treble staff contains red notes, the bass staff contains blue notes, and a lower staff contains orange notes. Measure 16 features a green highlight on the treble staff. Measure 17 features a blue highlight on the bass staff. Measure 18 features a red highlight on the treble staff.

19

Measures 19-21 of the musical score. The treble staff contains red notes, the bass staff contains blue notes, and a lower staff contains orange notes. Measure 19 features a green highlight on the treble staff. Measure 20 features a blue highlight on the bass staff. Measure 21 features a red highlight on the treble staff.

22

25

28

31

34

Measures 34-36 of the musical score. The system consists of a grand staff with a treble clef and a bass clef. The treble staff has a green line at the top. The bass staff has a blue line at the bottom. The music is written in a key with one flat (B-flat). The melody in the treble staff starts on a whole note G4, followed by a half note A4, and then a quarter note B4. The bass staff starts on a whole note G3, followed by a half note A3, and then a quarter note B3. The music continues with various note values and rests.

37

Measures 37-39 of the musical score. The system consists of a grand staff with a treble clef and a bass clef. The treble staff has a green line at the top. The bass staff has a blue line at the bottom. The music is written in a key with one flat (B-flat). The melody in the treble staff starts on a whole note G4, followed by a half note A4, and then a quarter note B4. The bass staff starts on a whole note G3, followed by a half note A3, and then a quarter note B3. The music continues with various note values and rests.

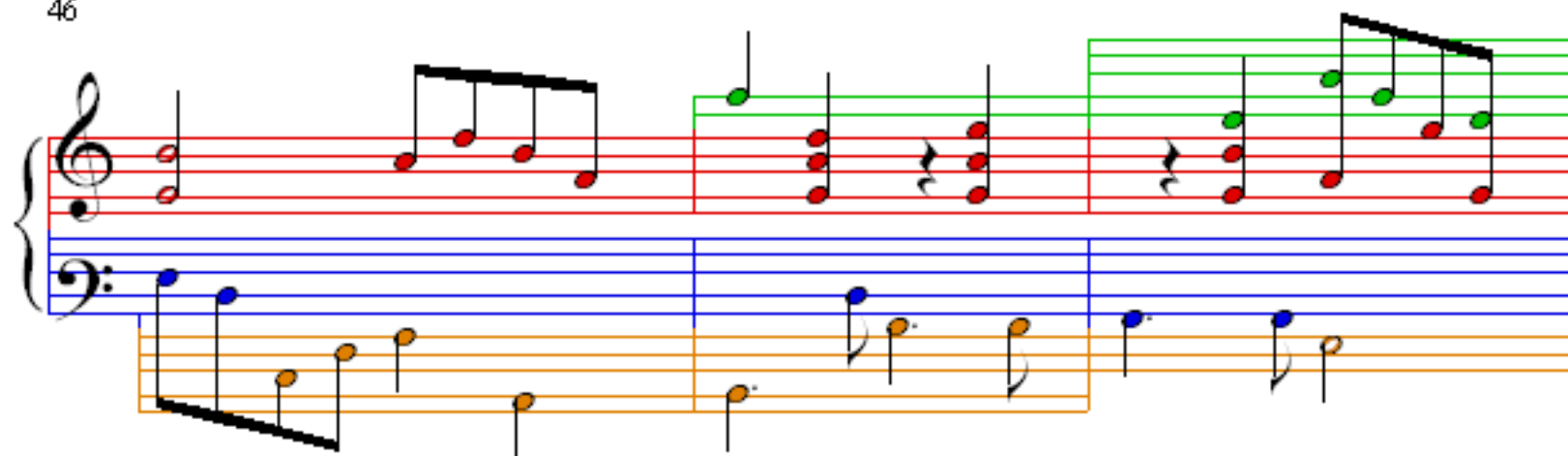
40

Measures 40-42 of the musical score. The system consists of a grand staff with a treble clef and a bass clef. The treble staff has a green line at the top. The bass staff has a blue line at the bottom. The music is written in a key with one flat (B-flat). The melody in the treble staff starts on a whole note G4, followed by a half note A4, and then a quarter note B4. The bass staff starts on a whole note G3, followed by a half note A3, and then a quarter note B3. The music continues with various note values and rests.

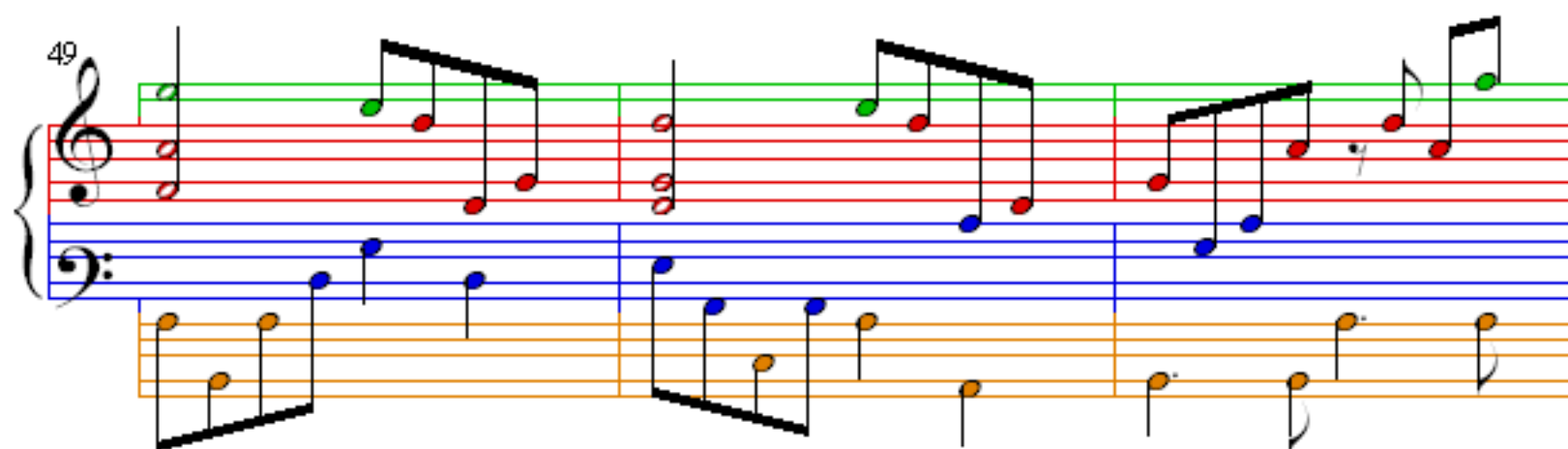
43

Measures 43-45 of the musical score. The system consists of a grand staff with a treble clef and a bass clef. The treble staff has a green line at the top. The bass staff has a blue line at the bottom. The music is written in a key with one flat (B-flat). The melody in the treble staff starts on a whole note G4, followed by a half note A4, and then a quarter note B4. The bass staff starts on a whole note G3, followed by a half note A3, and then a quarter note B3. The music continues with various note values and rests.

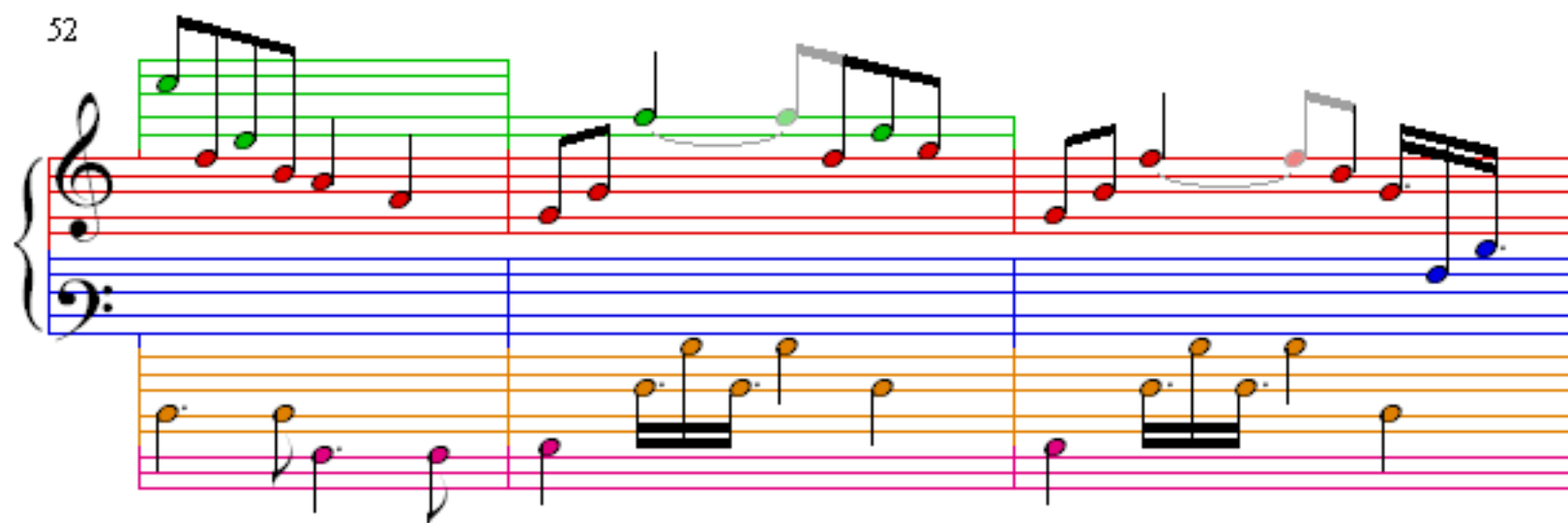
46



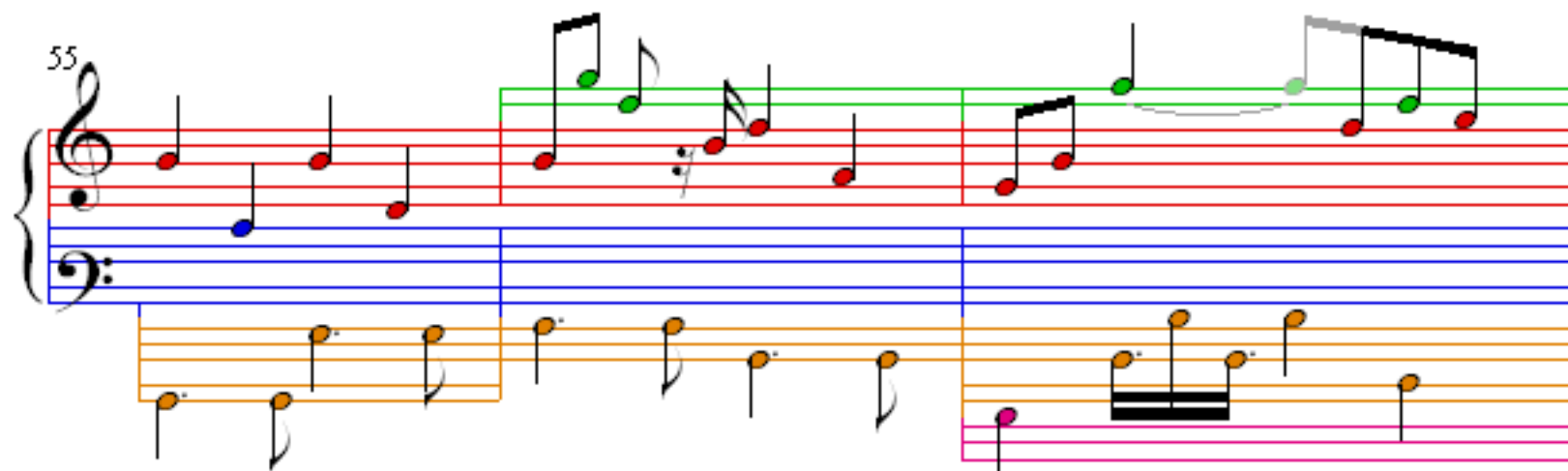
49



52



55



58

Measures 58-60. Treble clef: Red notes. Bass clef: Blue notes. Lower staff: Orange and pink notes.

61

Measures 61-63. Treble clef: Red notes. Bass clef: Blue notes. Lower staff: Orange notes.

64

Measures 64-66. Treble clef: Green and red notes. Bass clef: Blue notes. Lower staff: Orange notes.

67

Measures 67-69. Treble clef: Green and red notes. Bass clef: Blue notes. Lower staff: Orange and pink notes.