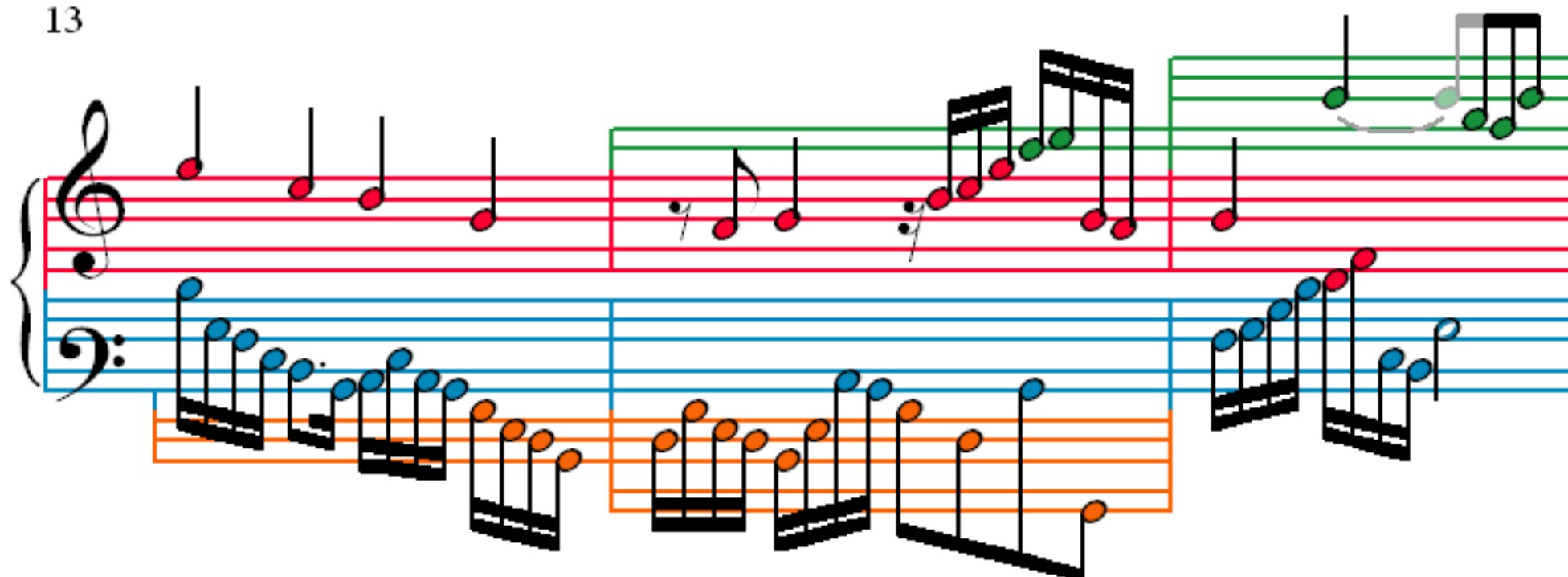


Das Wohltemperierte Clavier I, Fuga XXIV

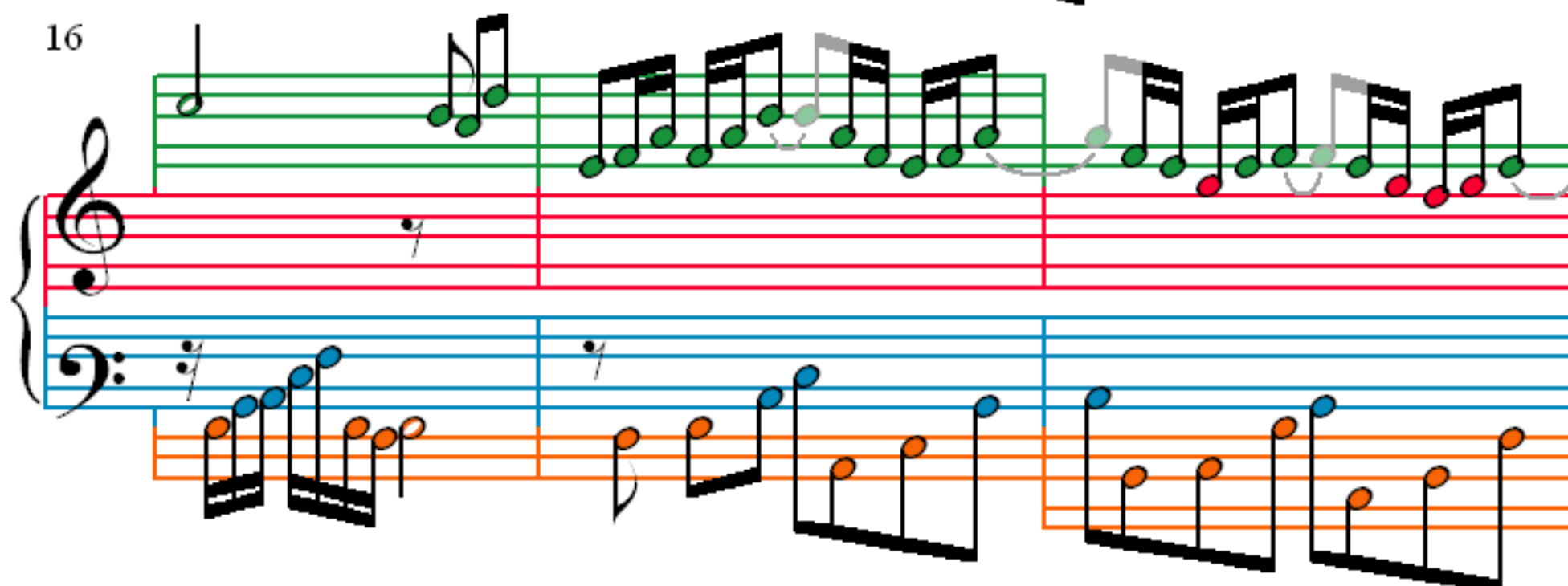
BWV 869

J. S. Bach (1685–1750)

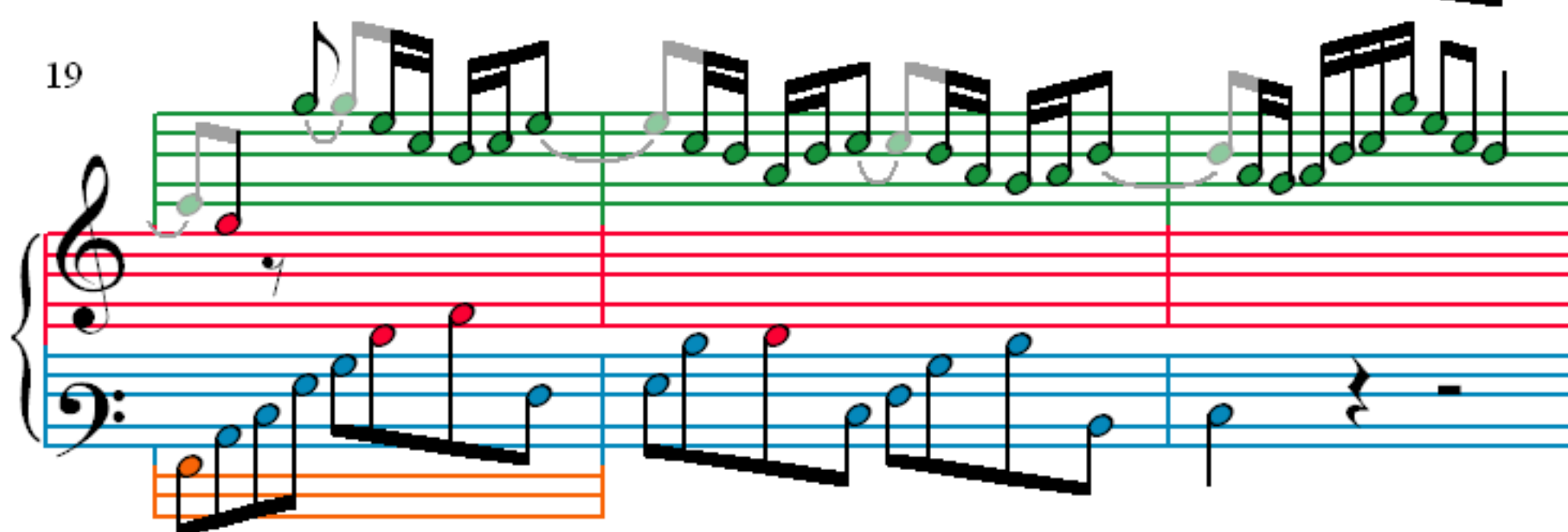
13



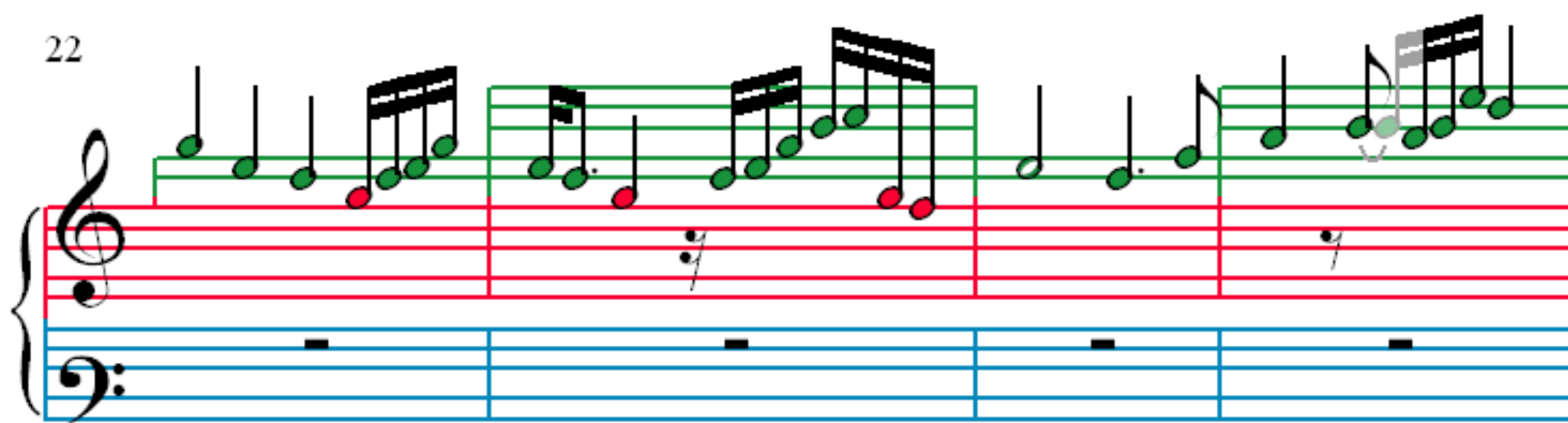
16



19



22



26

Measures 26-29. Treble clef: Measure 26 has a green eighth-note chord. Measures 27-28 have green eighth-note chords. Measure 29 has a blue eighth-note line. Bass clef: Measures 26-28 have whole rests. Measure 29 has a blue eighth-note line.

30

Measures 30-32. Treble clef: Measure 30 has a green eighth-note chord. Measures 31-32 have green eighth-note chords. Bass clef: Measures 30-32 have blue eighth-note lines.

33

Measures 33-35. Treble clef: Measure 33 has a green eighth-note chord. Measures 34-35 have green eighth-note chords. Bass clef: Measures 33-35 have blue eighth-note lines.

36

Measures 36-38. Treble clef: Measure 36 has a green eighth-note chord. Measures 37-38 have green eighth-note chords. Bass clef: Measures 36-37 have whole rests. Measure 38 has a blue eighth-note line.

39

42

45

49

53

Measures 53-56. Treble staff: measures 53-54 have sixteenth-note runs; measure 55 has a whole note with a purple bracket; measure 56 has a sixteenth-note run. Bass staff: whole rests in all measures.

57

Measures 57-60. Treble staff: continuous sixteenth-note patterns with green and red notes. Bass staff: whole rests in all measures.

61

Measures 61-63. Treble staff: sixteenth-note patterns with green and red notes. Bass staff: eighth-note patterns with blue and orange notes.

64

Measures 64-67. Treble staff: sixteenth-note patterns with green and red notes. Bass staff: eighth-note patterns with blue and orange notes.