

# Das Wohltemperierte Clavier I, Praeludium 1

## BWV 849

J. S. Bach (1685–1750)

1

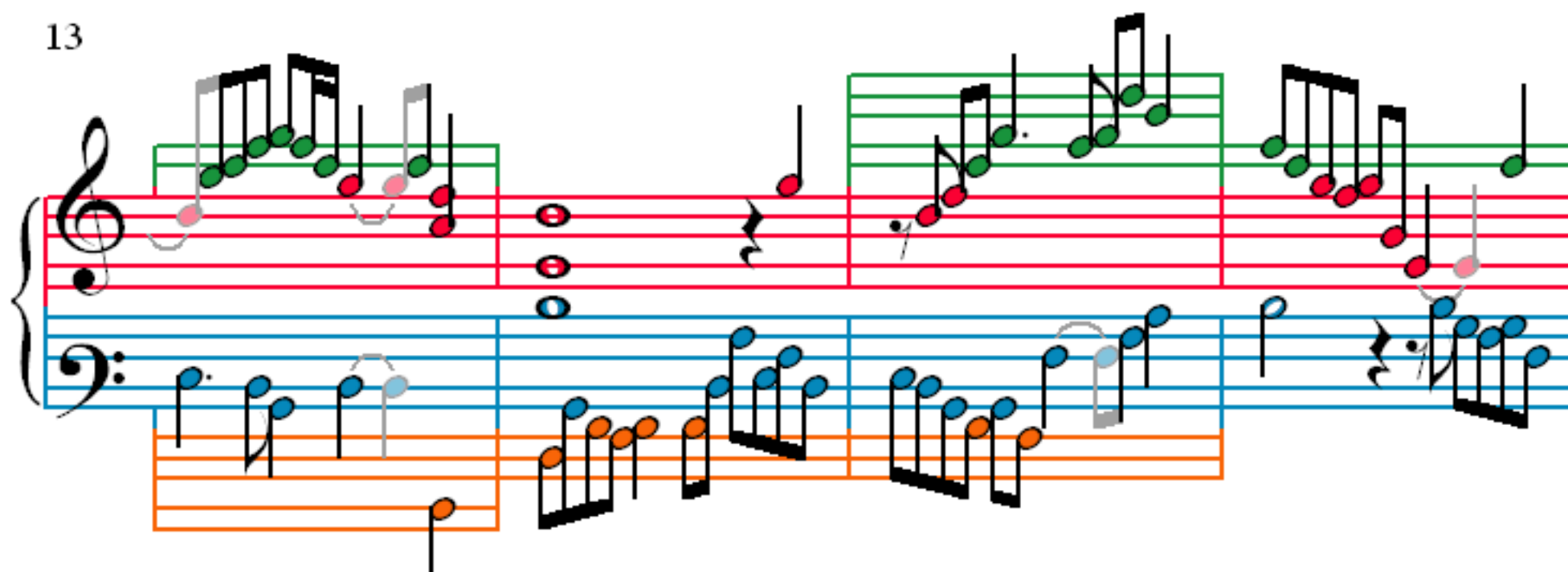
4

7

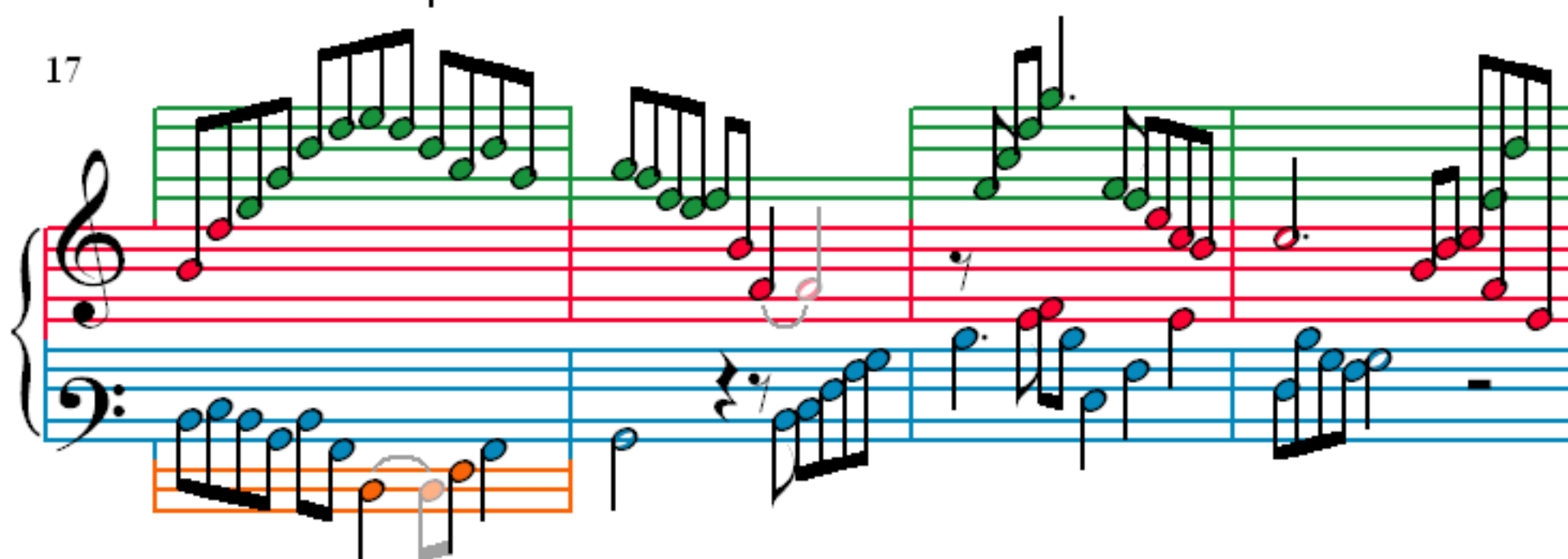
10

The image displays the first 12 measures of the Praeludium from the first book of J.S. Bach's Well-Tempered Clavier. The notation is presented in a system of four staves, each containing a grand staff (treble and bass clef). The first staff (measures 1-3) features a treble staff with a 3/2 time signature and a key signature of one sharp (F#). The second staff (measures 4-6) continues the piece. The third staff (measures 7-9) shows a change in the bass line. The fourth staff (measures 10-12) concludes the first system. The notation includes various musical symbols such as notes, rests, and accidentals, with some notes highlighted in green and others in red. The bass line in the final measure of the fourth staff is highlighted in orange.

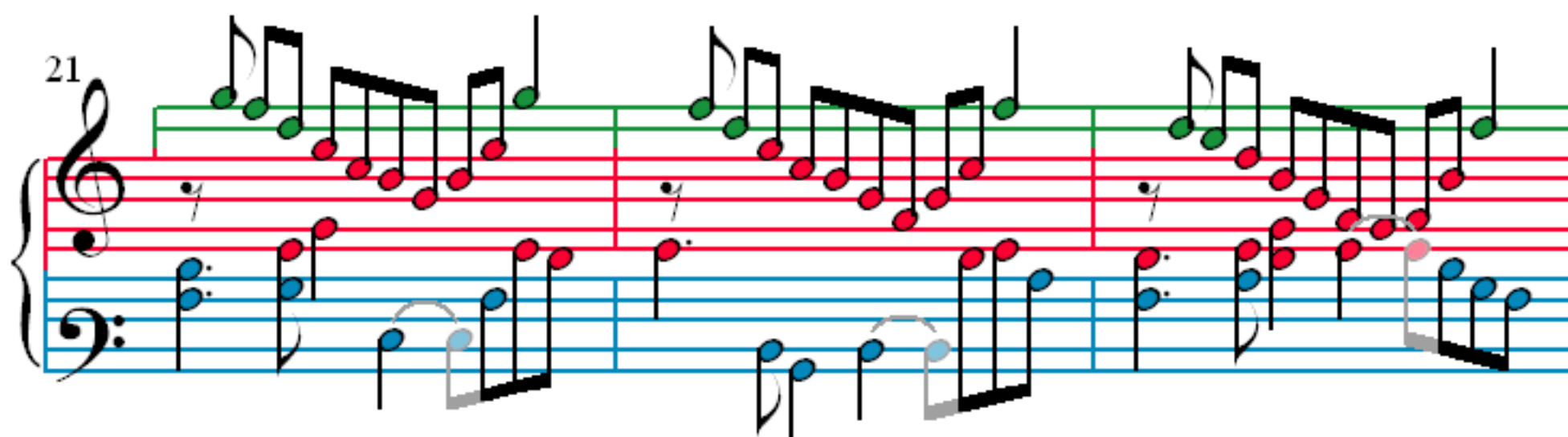
13



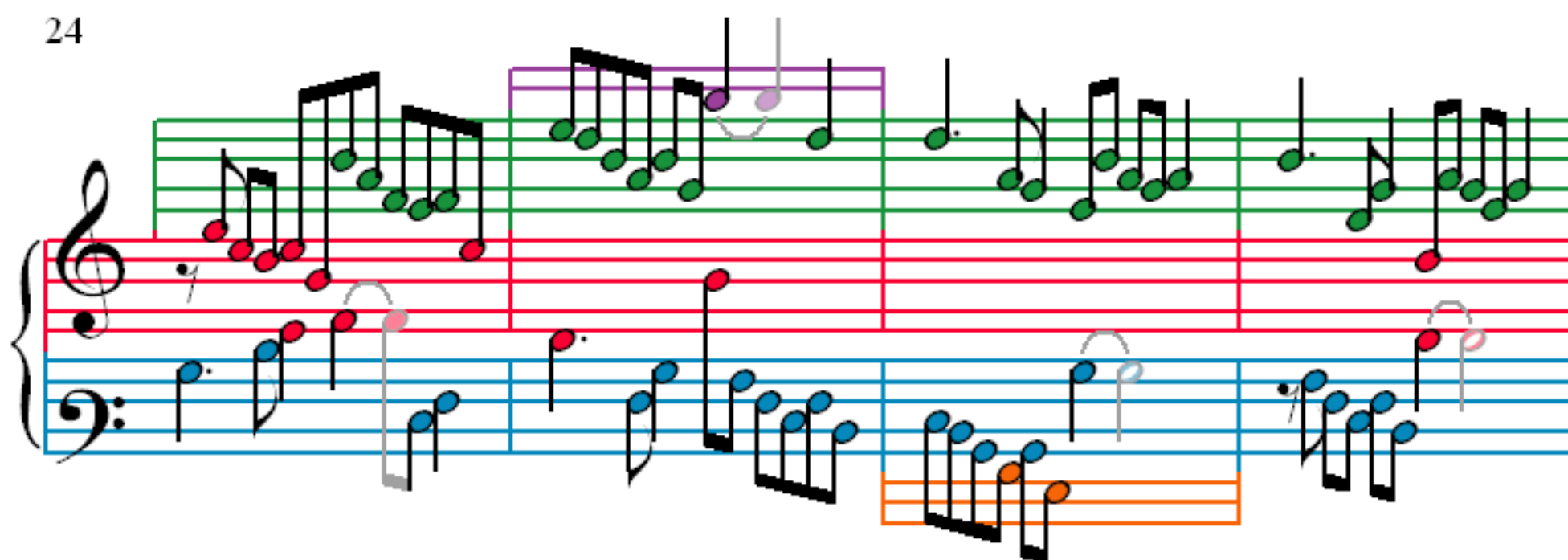
17



21



24



28

31

34

37