

Keyboard partita in E minor

BWV-830-5

J. S. Bach (1685–1750)

1

3

5

7

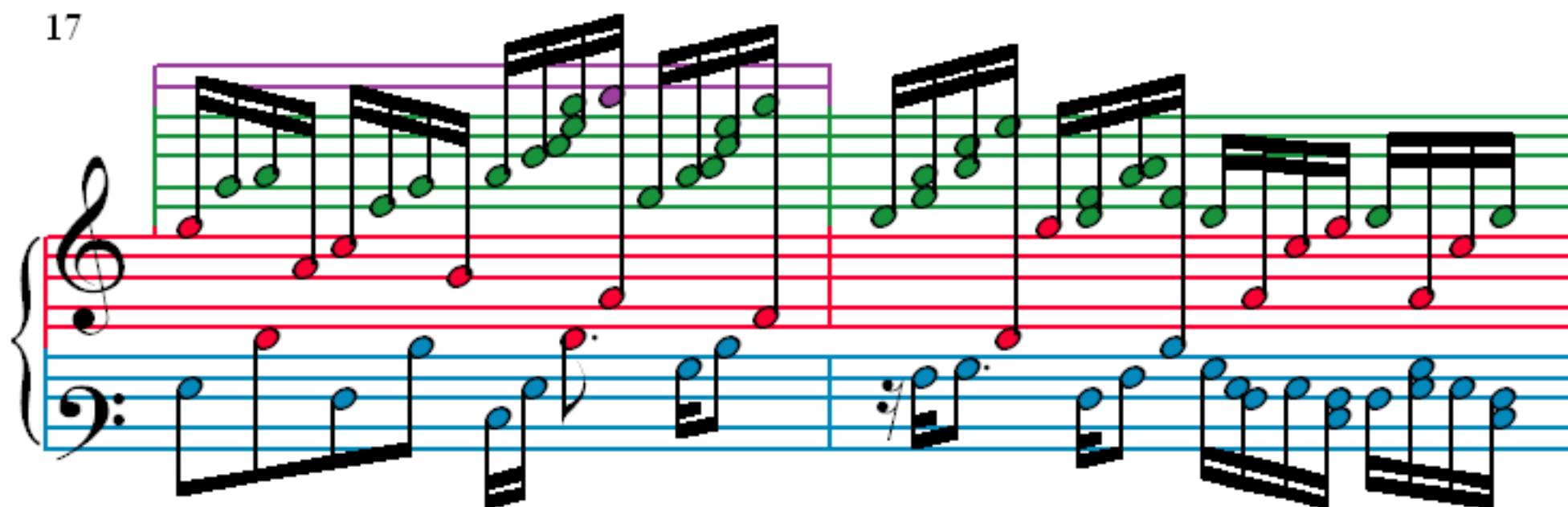
9

11

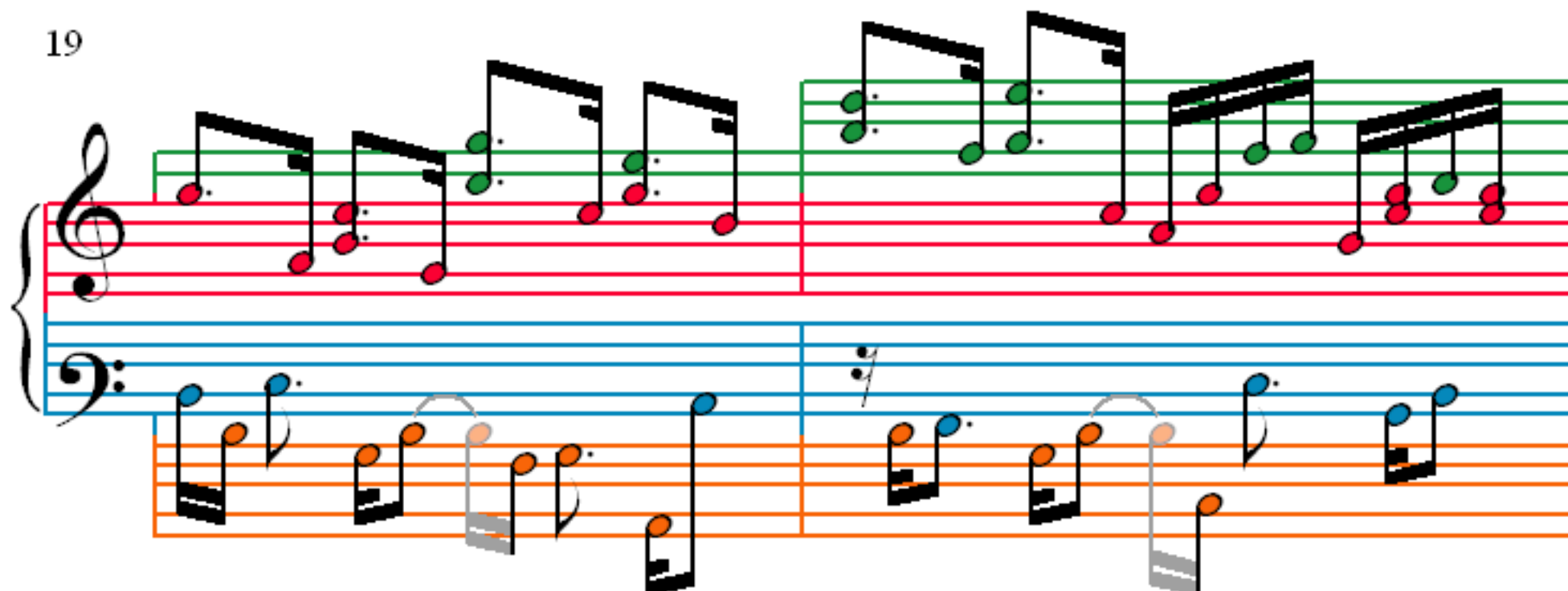
13

15

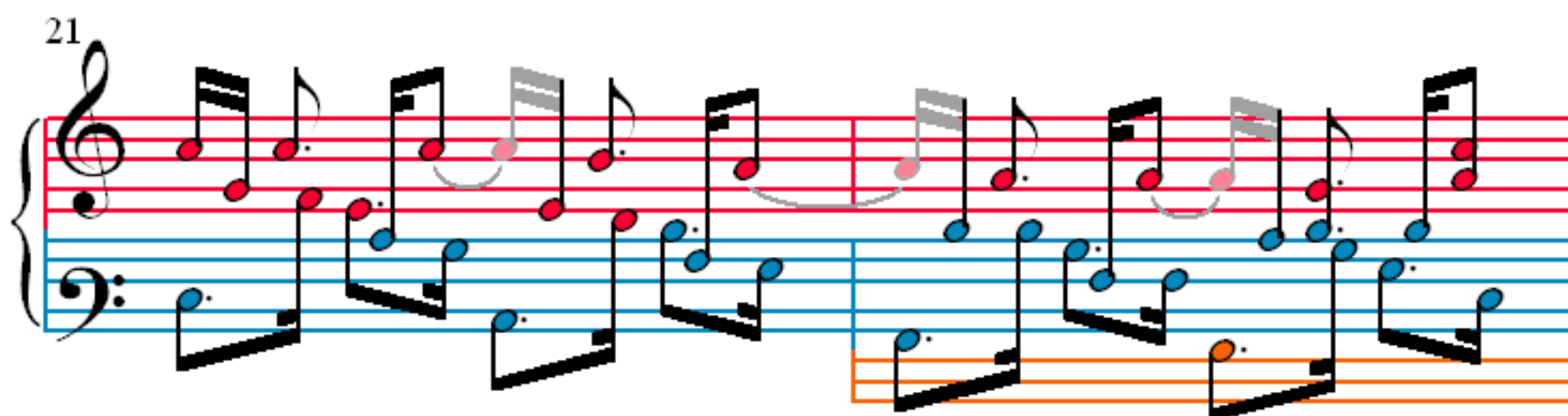
17



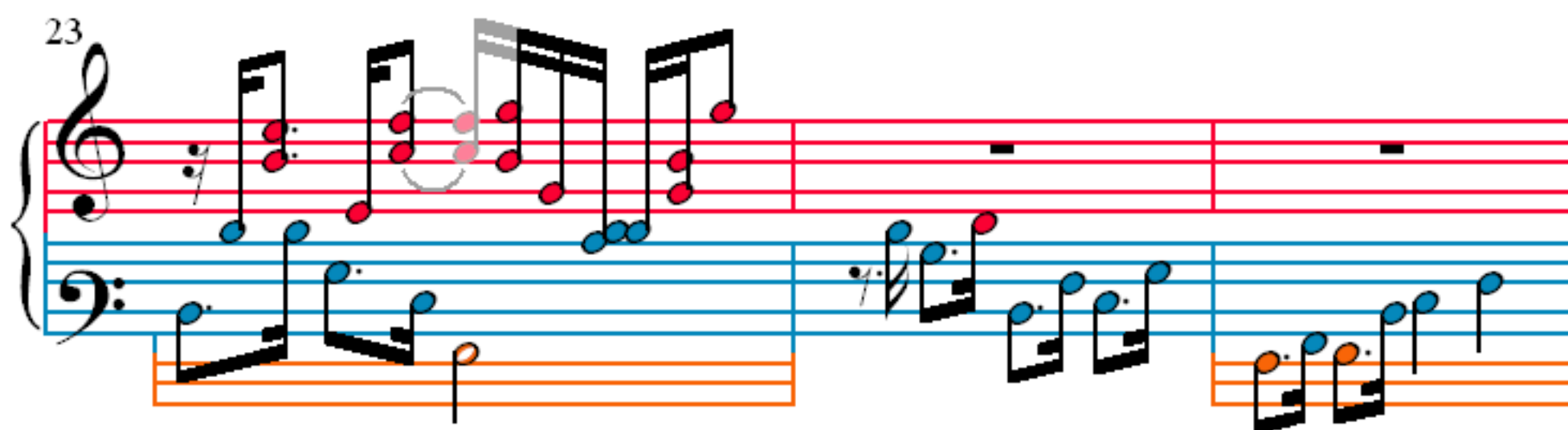
19



21



23



26

28

30

32

34

Measures 34-35. Treble clef: Green notes (F4, G4, A4, B4, C5, B4, A4, G4, F4) and red notes (E4, D4, C4, B3, A3, G3, F3, E3). Bass clef: Blue notes (C3, D3, E3, F3, G3, A3, B3, C4) and orange notes (B2, A2, G2, F2, E2, D2, C2, B1). Measure 35 includes a greyed-out section in the bass clef.

36

Measures 36-37. Treble clef: Green notes (F4, G4, A4, B4, C5, B4, A4, G4, F4) and red notes (E4, D4, C4, B3, A3, G3, F3, E3). Bass clef: Blue notes (C3, D3, E3, F3, G3, A3, B3, C4). Measure 37 is empty.

38

Measures 38-39. Treble clef: Green notes (F4, G4, A4, B4, C5, B4, A4, G4, F4) and red notes (E4, D4, C4, B3, A3, G3, F3, E3). Bass clef: Blue notes (C3, D3, E3, F3, G3, A3, B3, C4). Measure 39 includes a greyed-out section in the treble clef.

40

Measures 40-41. Treble clef: Green notes (F4, G4, A4, B4, C5, B4, A4, G4, F4) and red notes (E4, D4, C4, B3, A3, G3, F3, E3). Bass clef: Blue notes (C3, D3, E3, F3, G3, A3, B3, C4) and orange notes (B2, A2, G2, F2, E2, D2, C2, B1). Measure 41 includes a greyed-out section in the bass clef.

42

Measures 42 and 43 of the keyboard partita in E minor. The right hand (treble clef) features a complex melodic line with many beamed sixteenth and thirty-second notes, some of which are highlighted in green. The left hand (bass clef) provides a rhythmic accompaniment with beamed eighth and sixteenth notes, some highlighted in blue and orange. The system is divided into two measures by a vertical bar line.

44

Measures 44 and 45 of the keyboard partita in E minor. The right hand continues with intricate melodic patterns, including some notes highlighted in green. The left hand features a more active bass line with beamed notes, some highlighted in blue and orange. The system is divided into two measures by a vertical bar line.

46

Measures 46, 47, and 48 of the keyboard partita in E minor. The right hand shows a series of beamed sixteenth notes, with some notes highlighted in green. The left hand has a steady accompaniment of beamed eighth notes, some highlighted in blue and orange. The system is divided into three measures by two vertical bar lines.

49

Measures 49, 50, and 51 of the keyboard partita in E minor. The right hand continues with complex melodic figures, including some notes highlighted in green. The left hand provides a rhythmic foundation with beamed notes, some highlighted in blue and orange. The system is divided into three measures by two vertical bar lines.