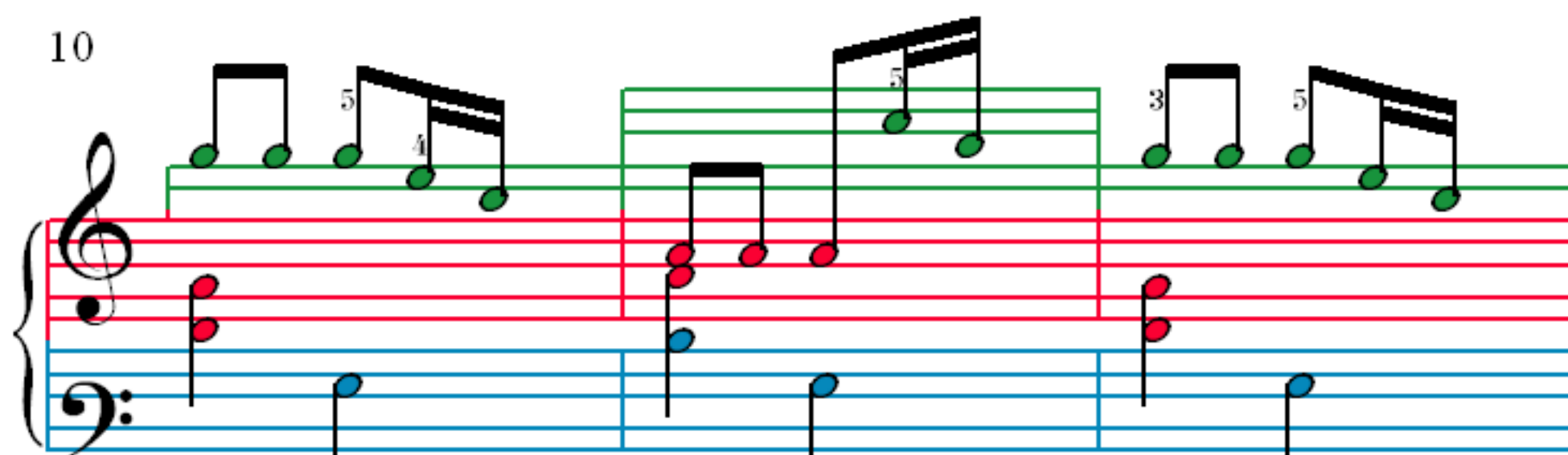
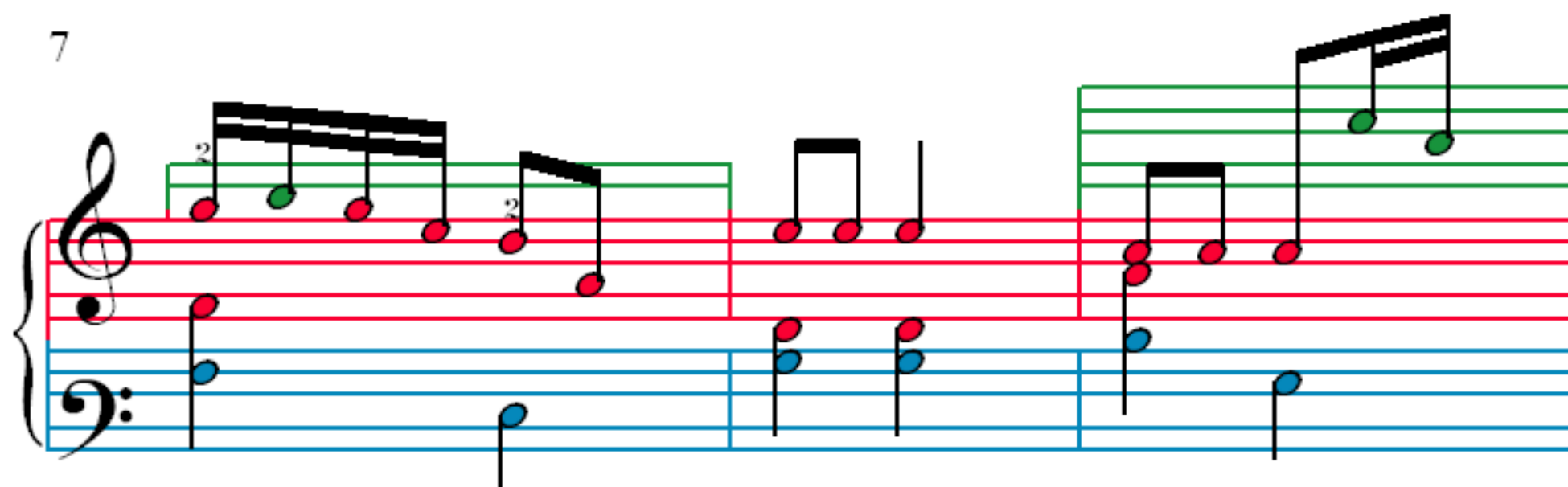
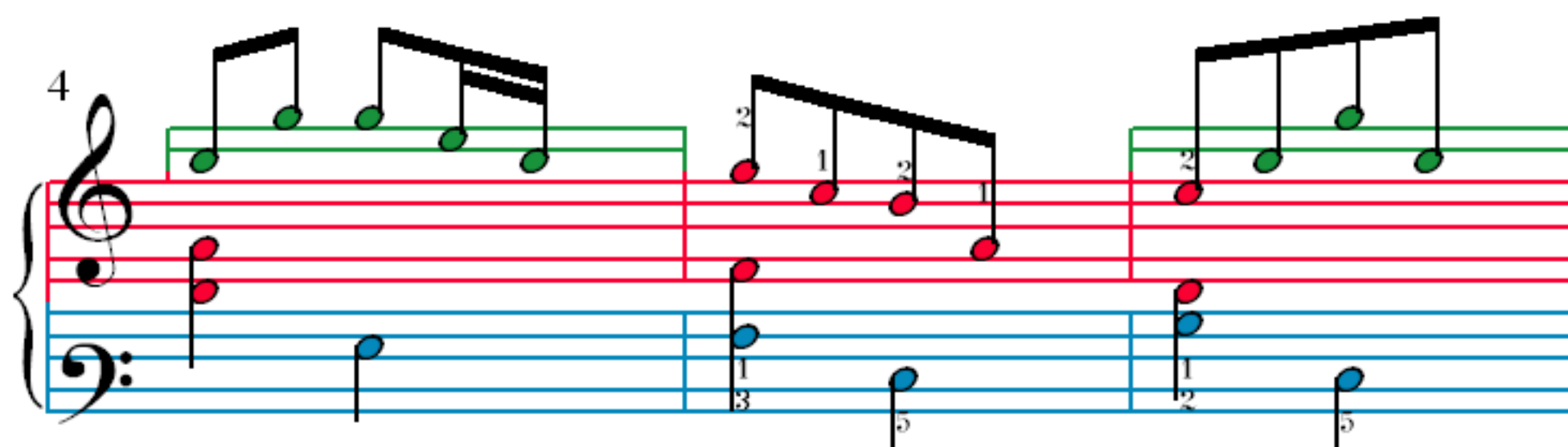
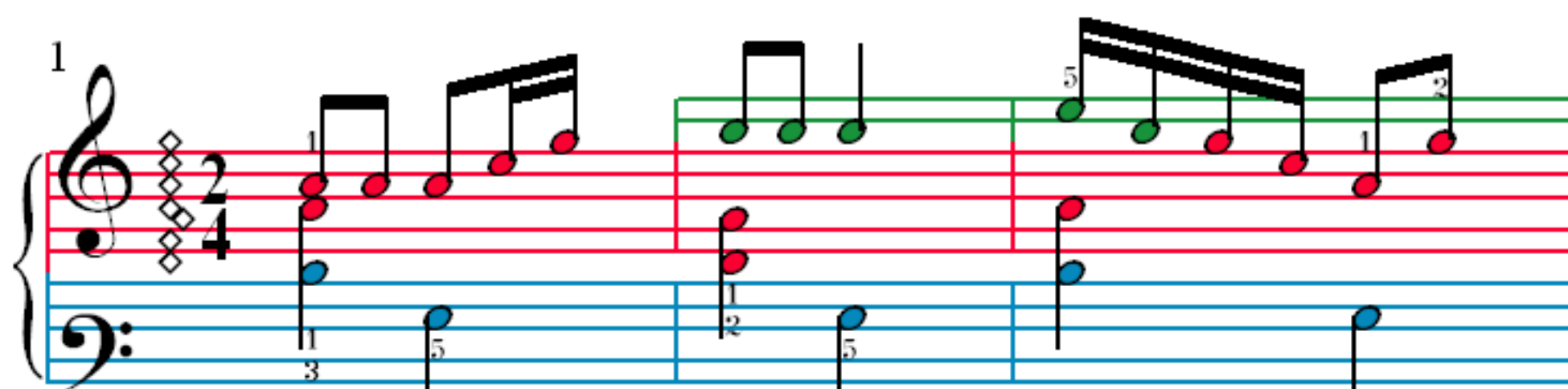


Balalaika Dance Tunes



13

16

19

22

25

Measures 25-27. Treble clef: Measure 25 has two green notes (G4, A4). Measure 26 has one green note (G4). Measure 27 has four green notes (G4, A4, B4, C5). Bass clef: Measure 25 has two blue notes (F3, G3). Measure 26 has one blue note (F3). Measure 27 has two blue notes (F3, G3). Red lines connect corresponding notes between staves.

28

Measures 28-30. Treble clef: Measure 28 has four red notes (G4, A4, B4, C5). Measure 29 has two red notes (G4, A4). Measure 30 has one red note (G4). Bass clef: Measure 28 has one blue note (F3). Measure 29 has two blue notes (F3, G3). Measure 30 has one blue note (F3). Red lines connect corresponding notes between staves.

31

Measures 31-33. Treble clef: Measure 31 has four green notes (G4, A4, B4, C5). Measure 32 has one green note (G4). Measure 33 has two green notes (G4, A4). Bass clef: Measure 31 has two blue notes (F3, G3). Measure 32 has two blue notes (F3, G3). Measure 33 has two blue notes (F3, G3). Red lines connect corresponding notes between staves.

34

Measures 34-36. Treble clef: Measure 34 has two green notes (G4, A4). Measure 35 has four green notes (G4, A4, B4, C5). Measure 36 has four red notes (G4, A4, B4, C5). Bass clef: Measure 34 has one blue note (F3). Measure 35 has two blue notes (F3, G3). Measure 36 has one blue note (F3). Red lines connect corresponding notes between staves.

37

Handwritten '7' below the staff in measure 38.

40

43

46

49

Measures 49-51. Treble clef: Measure 49 has a triplet of eighth notes (G4, A4, B4) and a quarter note (G4). Measure 50 has a quarter note (G4), an eighth note (A4), and a beamed eighth-note pair (B4, A4). Measure 51 has a quarter note (G4), an eighth note (A4), and a beamed eighth-note pair (B4, A4). Bass clef: Measure 49 has a quarter note (F3) and a quarter note (E3). Measure 50 has a quarter note (F3) and a quarter note (D3). Measure 51 has a quarter note (F3) and a quarter note (E3). Fingerings: 2, 3, 1.

52

Measures 52-54. Treble clef: Measure 52 has a quarter note (G4), an eighth note (A4), and a quarter note (B4). Measure 53 has a quarter note (G4), an eighth note (A4), and a beamed eighth-note pair (B4, A4). Measure 54 has a quarter note (G4), an eighth note (A4), and a beamed eighth-note pair (B4, A4). Bass clef: Measure 52 has a quarter note (F3) and a quarter note (E3). Measure 53 has a quarter note (F3) and a quarter note (D3). Measure 54 has a quarter note (F3) and a quarter note (E3). Fingerings: 2, 2.

55

Measures 55-57. Treble clef: Measure 55 has a quarter note (G4), an eighth note (A4), and a quarter note (B4). Measure 56 has a quarter note (G4), an eighth note (A4), and a quarter note (B4). Measure 57 has a triplet of eighth notes (G4, A4, B4). Bass clef: Measure 55 has a quarter note (F3) and a quarter note (E3). Measure 56 has a quarter note (F3) and a quarter note (D3). Measure 57 has a quarter note (F3) and a quarter note (E3). Fingerings: 2, 2, 3.

58

Measures 58-60. Treble clef: Measure 58 has a quarter note (G4), an eighth note (A4), and a quarter note (B4). Measure 59 has a quarter note (G4), an eighth note (A4), and a beamed eighth-note pair (B4, A4). Measure 60 has a quarter note (G4), an eighth note (A4), and a quarter note (B4). Bass clef: Measure 58 has a quarter note (F3) and a quarter note (E3). Measure 59 has a quarter note (F3) and a quarter note (D3). Measure 60 has a quarter note (F3) and a quarter note (E3). Fingerings: 3, 2, 4.

61

Measures 61-63. Treble clef: Measure 61 has four green eighth notes beamed together. Measure 62 has four green eighth notes beamed together. Measure 63 has four green eighth notes beamed together. Bass clef: Measure 61 has a red quarter note and a blue quarter note. Measure 62 has a red quarter note and a blue quarter note. Measure 63 has a red quarter note and a blue quarter note.

64

Measures 64-66. Treble clef: Measure 64 has two green eighth notes beamed together. Measure 65 has a triplet of three green eighth notes, indicated by a '3' above the notes. Measure 66 has four green eighth notes beamed together. Bass clef: Measure 64 has a red quarter note and a blue quarter note. Measure 65 has a red quarter note and a blue quarter note. Measure 66 has a red quarter note and a blue quarter note.

67

Measures 67-70. Treble clef: Measure 67 has four green eighth notes beamed together. Measure 68 has four green eighth notes beamed together. Measure 69 has four green eighth notes beamed together. Measure 70 has two green eighth notes beamed together. Bass clef: Measure 67 has a red quarter note and a blue quarter note. Measure 68 has a red quarter note and a blue quarter note. Measure 69 has a red quarter note and a blue quarter note. Measure 70 has a red quarter note and a blue quarter note.

70

Measures 70-73. Treble clef: Measure 70 has four green eighth notes beamed together. Measure 71 has four green eighth notes beamed together. Measure 72 has four green eighth notes beamed together. Measure 73 has four green eighth notes beamed together. Bass clef: Measure 70 has a red quarter note and a blue quarter note. Measure 71 has a red quarter note and a blue quarter note. Measure 72 has a red quarter note and a blue quarter note. Measure 73 has a red quarter note and a blue quarter note.

73

Measures 73-75. Treble clef: Green notes. Bass clef: Red and blue notes. Stems connect notes across measures.

76

Measures 76-78. Treble clef: Green notes. Bass clef: Red and blue notes. Stems connect notes across measures.

79

Measures 79-81. Treble clef: Green notes. Bass clef: Red and blue notes. Stems connect notes across measures.

82

Measures 82-84. Treble clef: Green notes. Bass clef: Red and blue notes. Stems connect notes across measures.

85

88

91

94