

The Crush Collision March

Scott Joplin

1

Measures 1-3 of the march. The music is in 4/4 time. The right hand (treble clef) features a melody with green and red notes, while the left hand (bass clef) plays a bass line with blue and orange notes. The first measure includes a first ending bracket over measures 1 and 2.

4

Measures 4-6 of the march. The right hand continues the melody with green and red notes, and the left hand plays the bass line with blue and orange notes. Measure 4 includes a first ending bracket over measures 4 and 5.

7

Measures 7-9 of the march. The right hand continues the melody with green and red notes, and the left hand plays the bass line with blue and orange notes. Measure 7 includes a first ending bracket over measures 7 and 8.

11

This system contains measures 11 through 14. The notation is for a piano accompaniment with three staves: Treble, Bass, and a lower Bass staff. The Treble staff has a green staff line above it. The Bass staff has a blue staff line above it. The lower Bass staff has an orange staff line above it. The notes are colored: green for Treble, blue for Bass, and orange for the lower Bass. The melody in the Treble staff starts with a quarter note G4, followed by a quarter note A4, and then a quarter note B4. The Bass staff has a quarter note G2, followed by a quarter note A2, and then a quarter note B2. The lower Bass staff has a quarter note G1, followed by a quarter note A1, and then a quarter note B1.

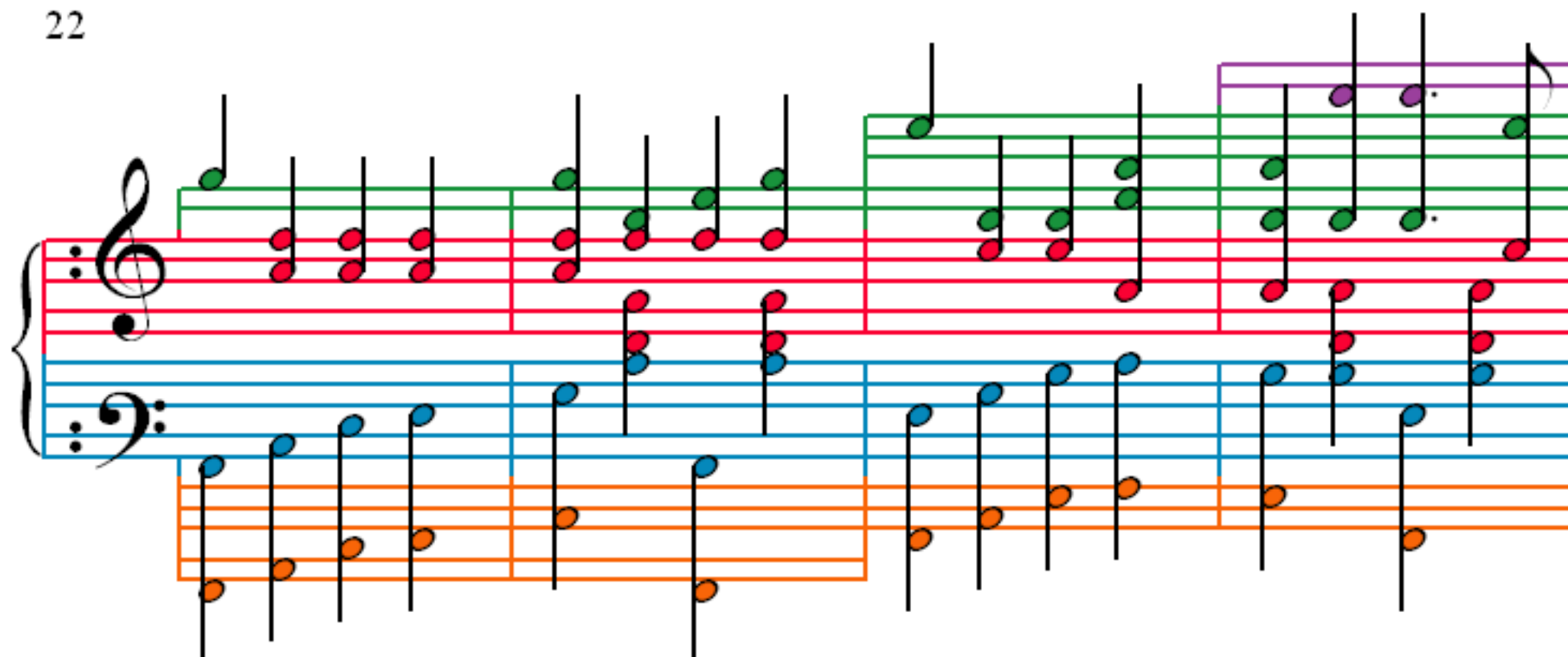
15

This system contains measures 15 through 18. The notation is for a piano accompaniment with three staves: Treble, Bass, and a lower Bass staff. The Treble staff has a green staff line above it. The Bass staff has a blue staff line above it. The lower Bass staff has an orange staff line above it. The notes are colored: green for Treble, blue for Bass, and orange for the lower Bass. The melody in the Treble staff starts with a quarter note G4, followed by a quarter note A4, and then a quarter note B4. The Bass staff has a quarter note G2, followed by a quarter note A2, and then a quarter note B2. The lower Bass staff has a quarter note G1, followed by a quarter note A1, and then a quarter note B1.

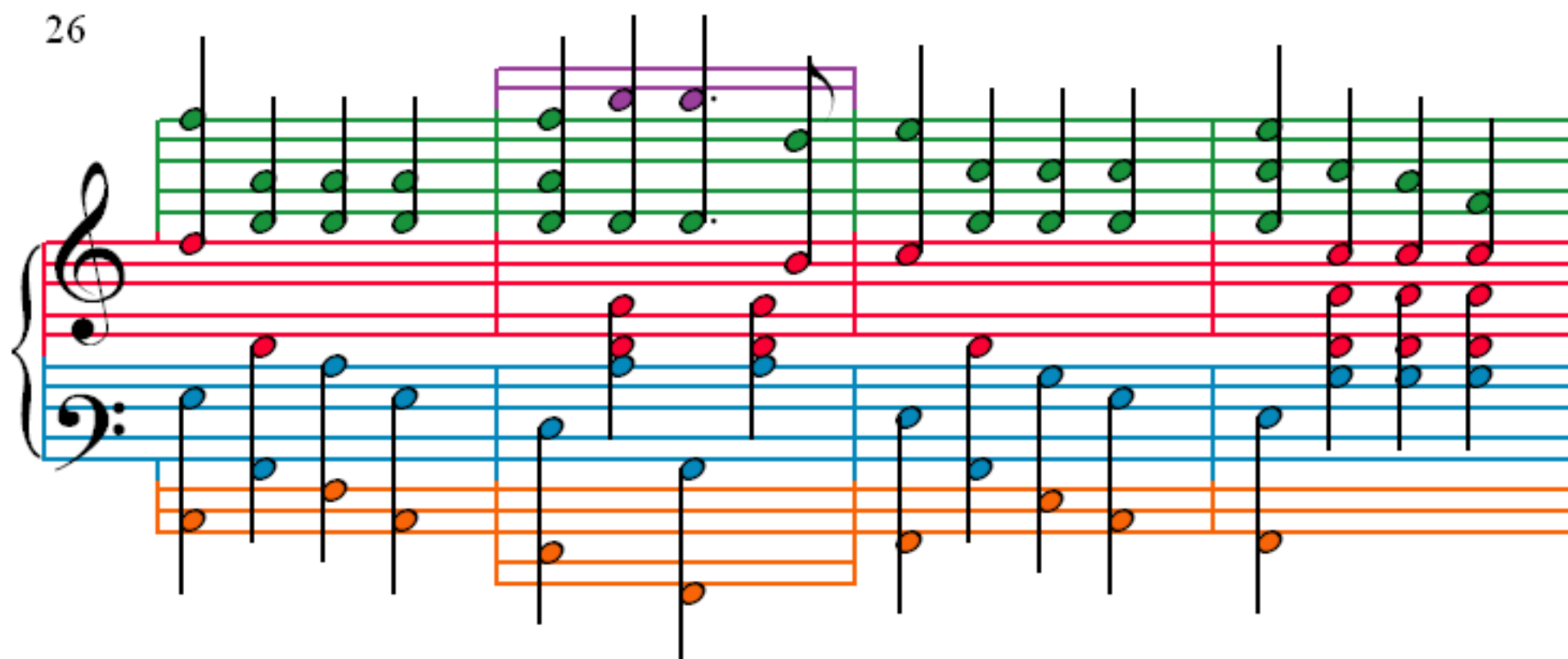
19

This system contains measures 19 through 22. The notation is for a piano accompaniment with three staves: Treble, Bass, and a lower Bass staff. The Treble staff has a green staff line above it. The Bass staff has a blue staff line above it. The lower Bass staff has an orange staff line above it. The notes are colored: green for Treble, blue for Bass, and orange for the lower Bass. The melody in the Treble staff starts with a quarter note G4, followed by a quarter note A4, and then a quarter note B4. The Bass staff has a quarter note G2, followed by a quarter note A2, and then a quarter note B2. The lower Bass staff has a quarter note G1, followed by a quarter note A1, and then a quarter note B1.

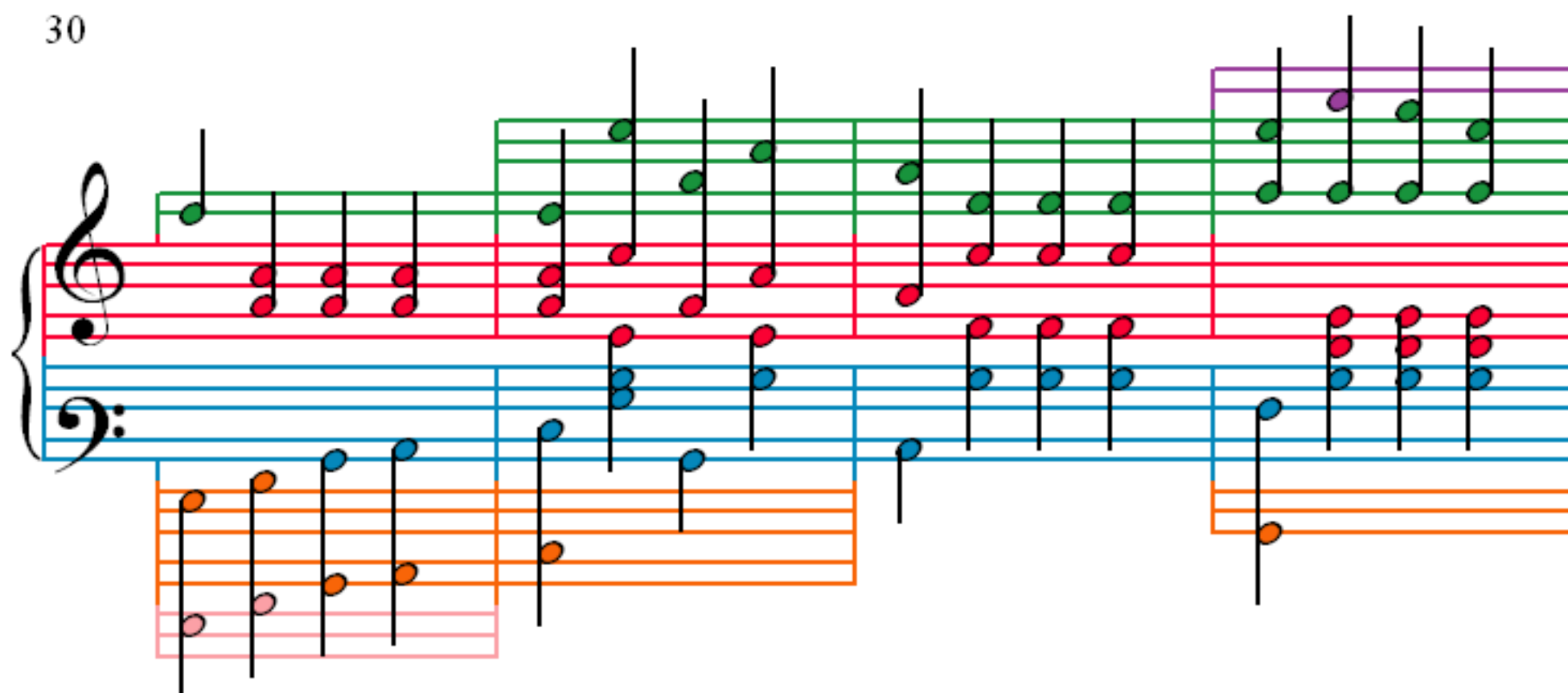
22



26



30



34

38

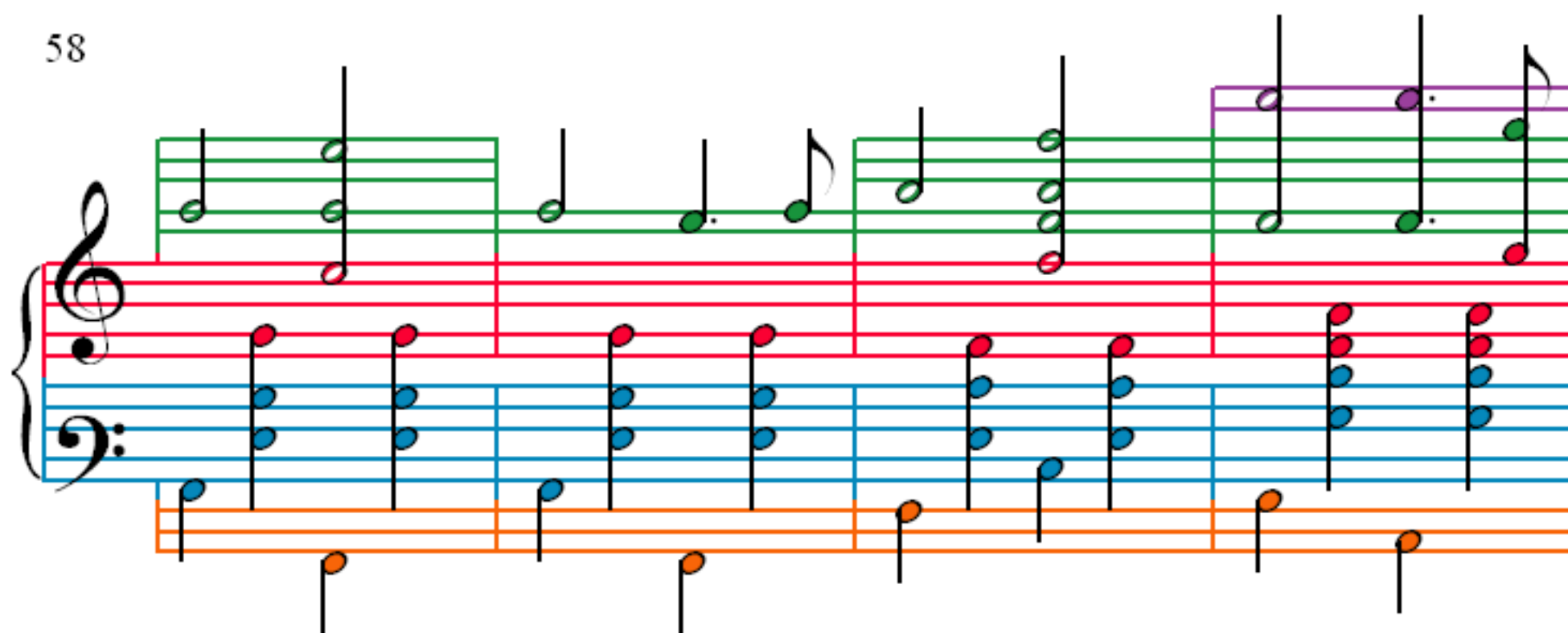
42

46

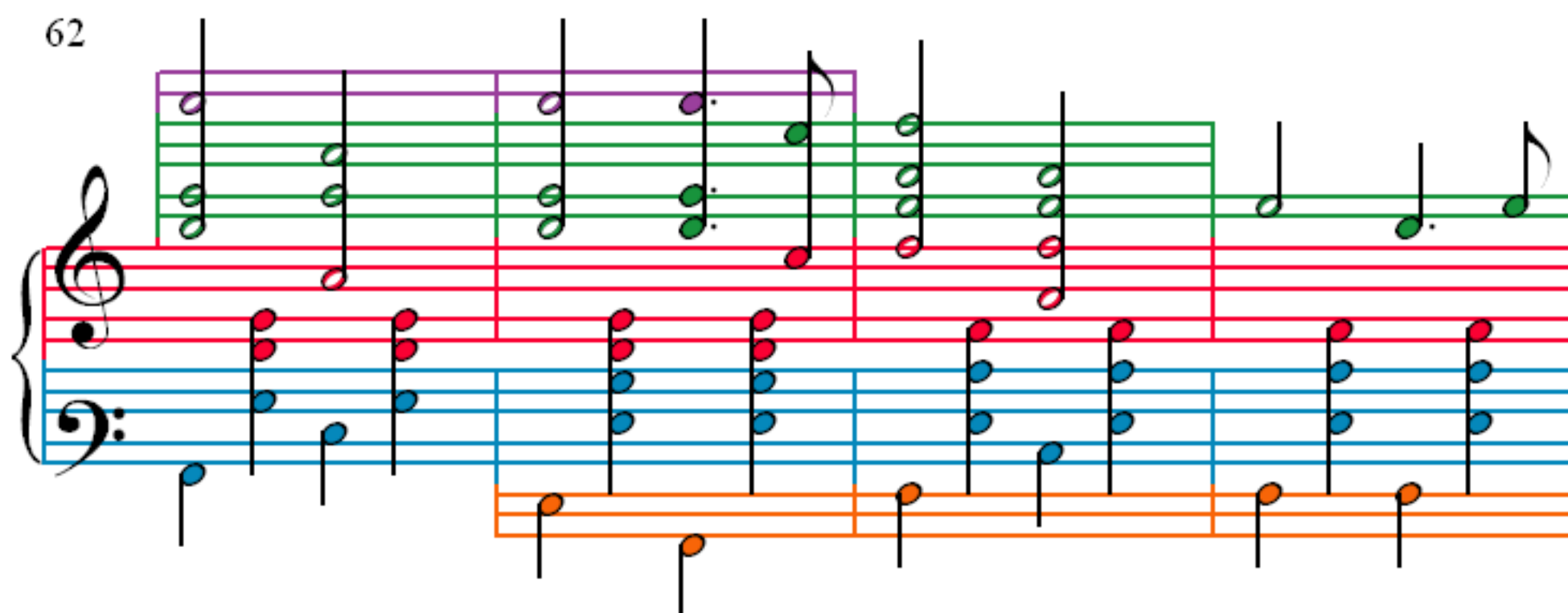
50

54

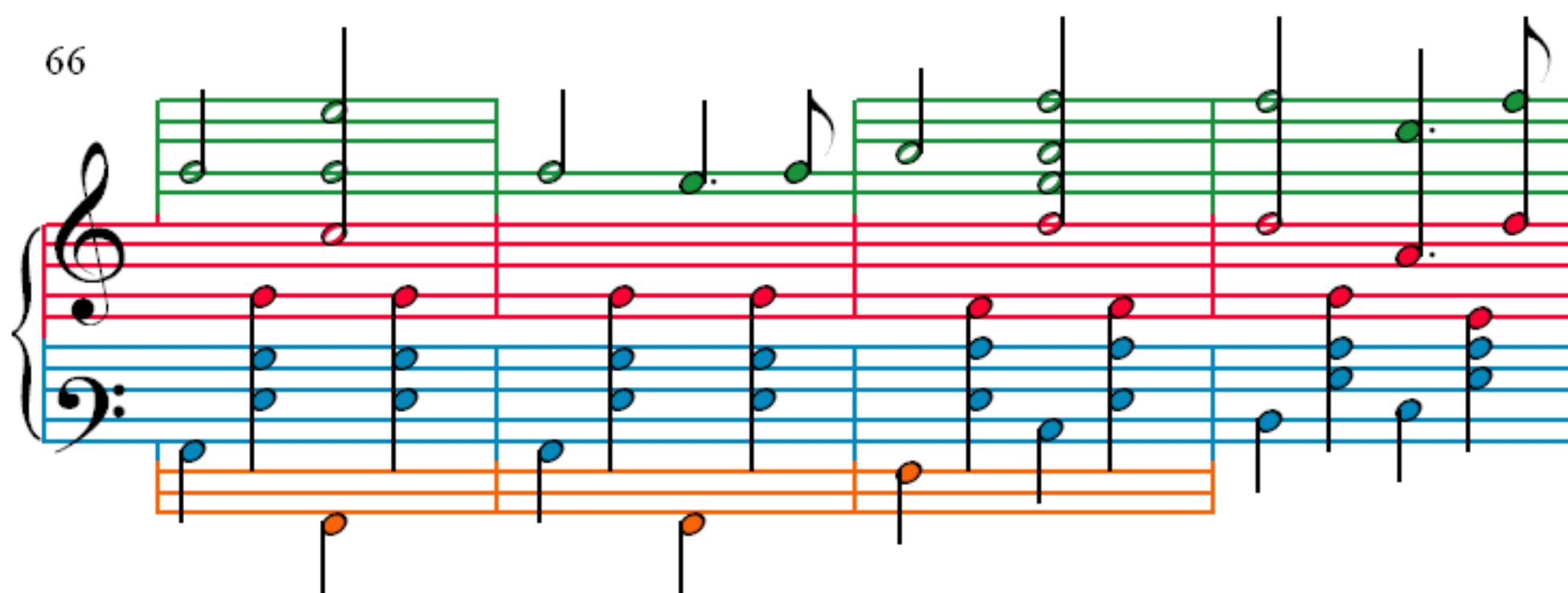
58



62



66



70

Measures 70-72 of the musical score. Measure 70 features a treble staff with a purple chord (F4, A4, C5) and a bass staff with a blue chord (F2, A2, C3). Measure 71 continues with similar chords. Measure 72 shows a treble staff with a green chord (F4, A4, C5) and a bass staff with a blue chord (F2, A2, C3). A bracket above measure 72 indicates a first ending.

73

Measures 73-76 of the musical score. Measure 73 features a treble staff with a green chord (F4, A4, C5) and a bass staff with a blue chord (F2, A2, C3). Measure 74 continues with similar chords. Measure 75 shows a treble staff with a purple chord (F4, A4, C5) and a bass staff with a blue chord (F2, A2, C3). Measure 76 continues with similar chords. A bracket above measure 73 indicates a first ending.

77

Measures 77-80 of the musical score. Measure 77 features a treble staff with a yellow chord (F4, A4, C5) and a bass staff with a blue chord (F2, A2, C3). Measure 78 continues with similar chords. Measure 79 shows a treble staff with a purple chord (F4, A4, C5) and a bass staff with a blue chord (F2, A2, C3). Measure 80 continues with similar chords. A bracket above measure 77 indicates a first ending.

81

Measures 81-83 of the musical score. The system consists of three staves: a top staff with a treble clef, a middle grand staff (treble and bass clefs), and a bottom staff. The top staff has a purple treble clef and contains two measures of music with purple and green notes. The middle grand staff has a red treble clef and contains measures 81-83 with red and blue notes. The bottom staff has an orange treble clef and contains measures 81-83 with orange notes. The music is in 4/4 time and features a variety of note values and rests.

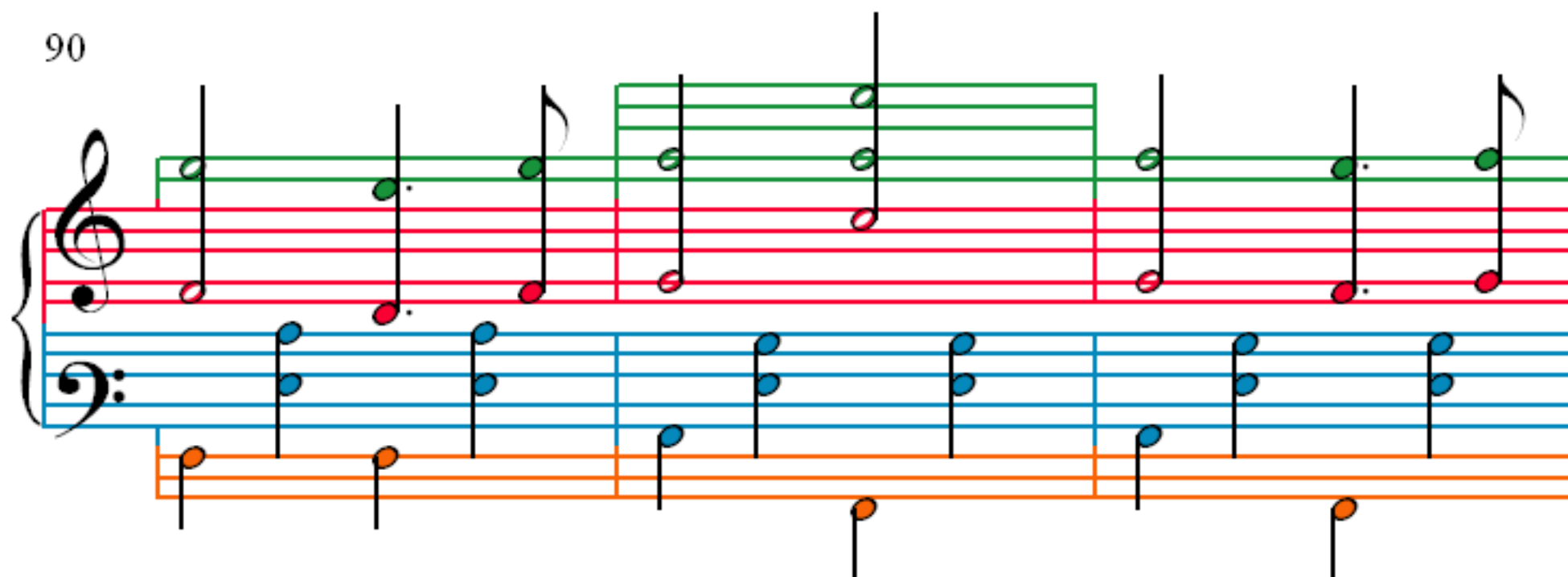
84

Measures 84-86 of the musical score. The system consists of three staves: a top staff with a treble clef, a middle grand staff (treble and bass clefs), and a bottom staff. The top staff has a green treble clef and contains measures 84-86 with green and red notes. The middle grand staff has a blue treble clef and contains measures 84-86 with blue notes. The bottom staff has an orange treble clef and contains measures 84-86 with orange notes. The music is in 4/4 time and features a variety of note values and rests.

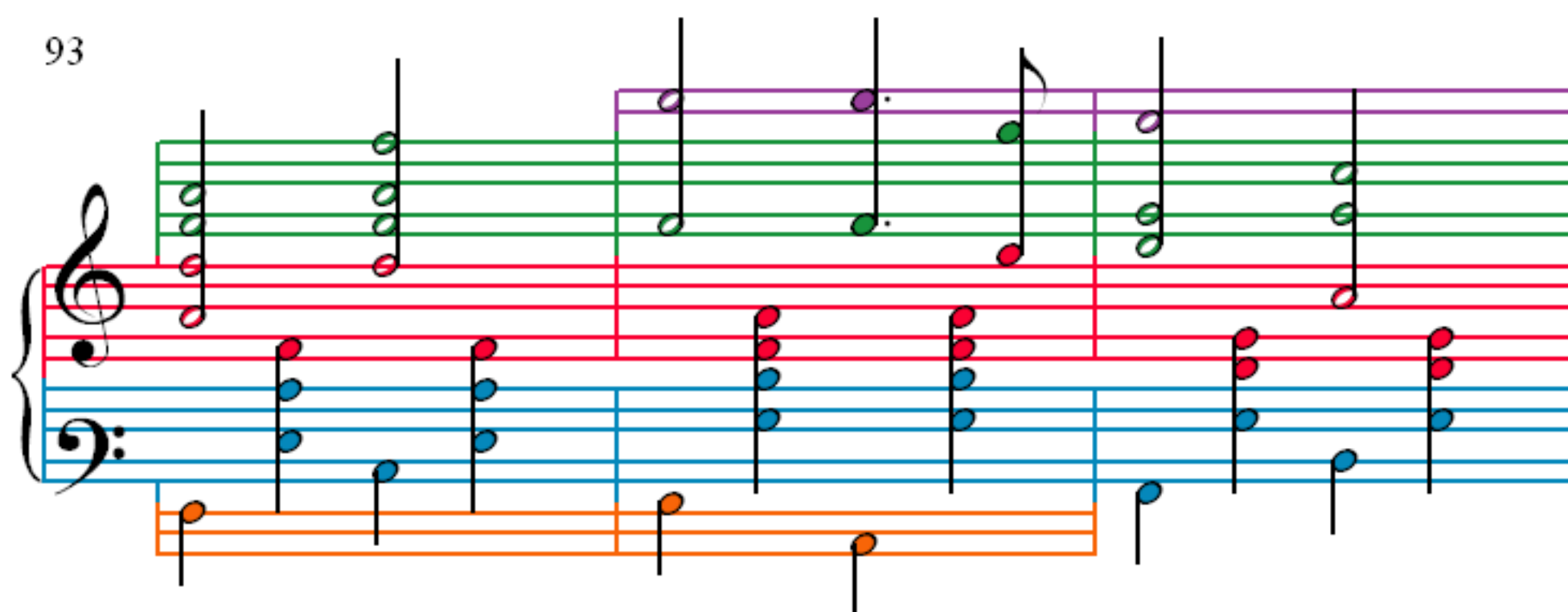
87

Measures 87-89 of the musical score. The system consists of three staves: a top staff with a treble clef, a middle grand staff (treble and bass clefs), and a bottom staff. The top staff has a green treble clef and contains measures 87-89 with green and red notes. The middle grand staff has a blue treble clef and contains measures 87-89 with blue notes. The bottom staff has an orange treble clef and contains measures 87-89 with orange notes. The music is in 4/4 time and features a variety of note values and rests.

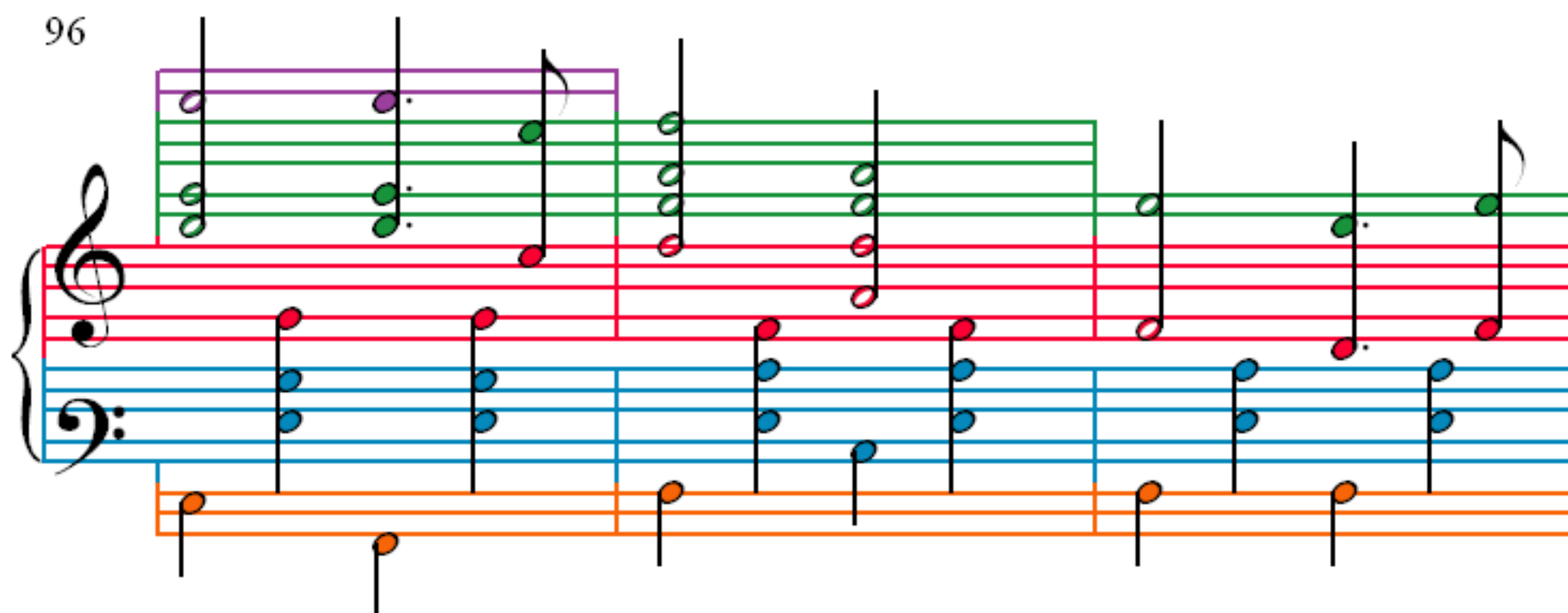
90



93



96



99

102

104