

Sonata No. 6

2nd Movement: Allegretto

L. V. Beethoven (1770–1827)

♩ = 178

1

Measures 1-4 of the 2nd movement. The score is in 3/4 time. The right hand (treble clef) plays a melody of eighth notes, while the left hand (bass clef) plays a steady eighth-note accompaniment. The notes are color-coded: blue for the right hand and orange for the left hand.

5

Measures 5-8. The right hand continues the melody, with some notes highlighted in green. The left hand continues the accompaniment, with some notes highlighted in orange. A pink box highlights the final measure of this system.

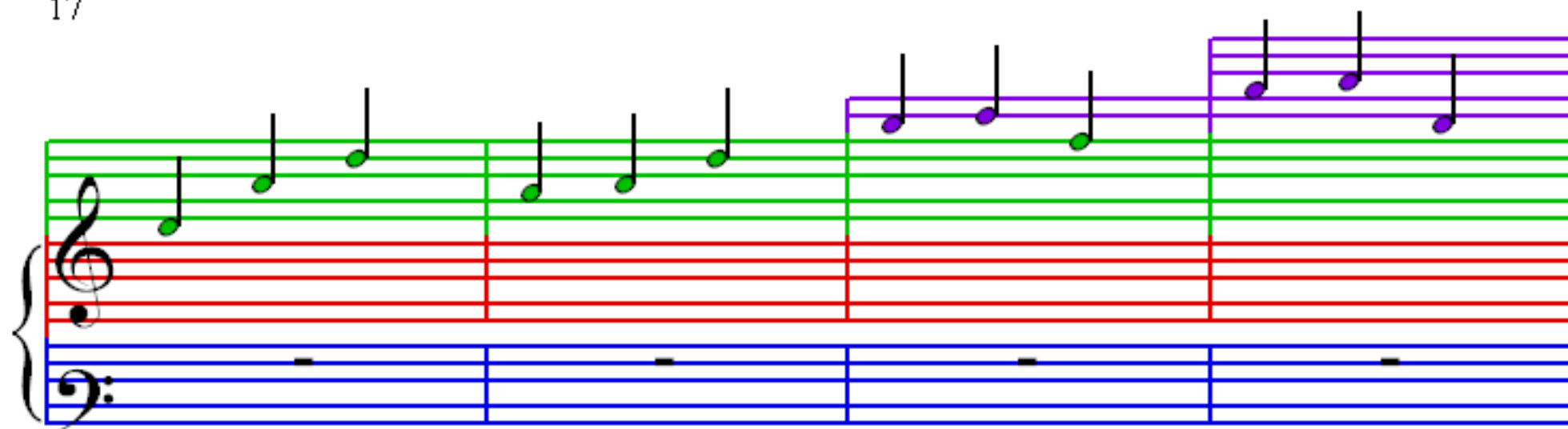
9

Measures 9-12. The right hand continues the melody, with some notes highlighted in green. The left hand continues the accompaniment, with some notes highlighted in blue.

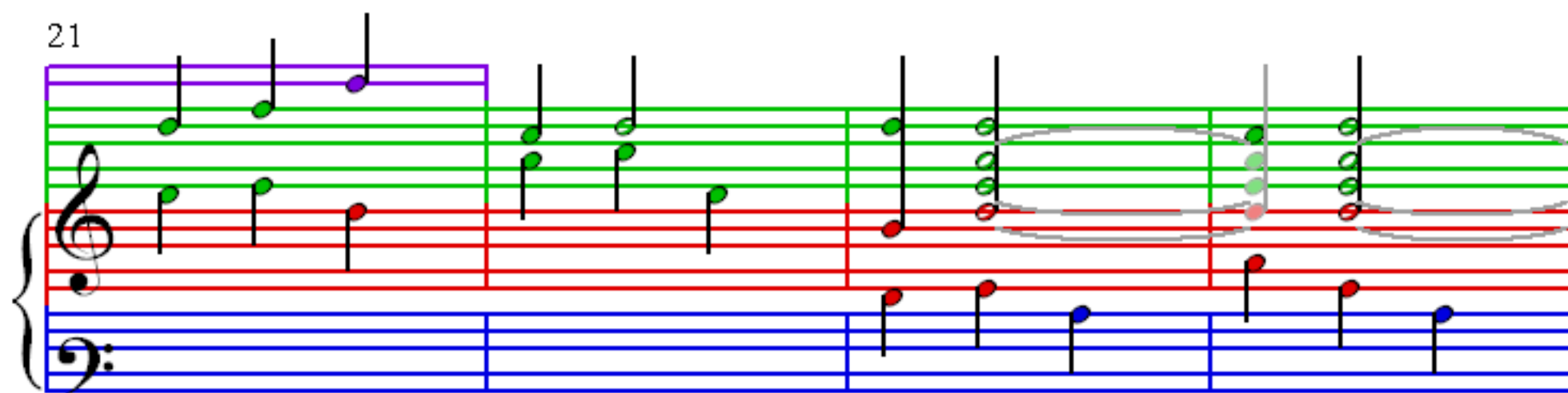
13

Measures 13-16. The right hand continues the melody, with some notes highlighted in green. The left hand continues the accompaniment, with some notes highlighted in blue.

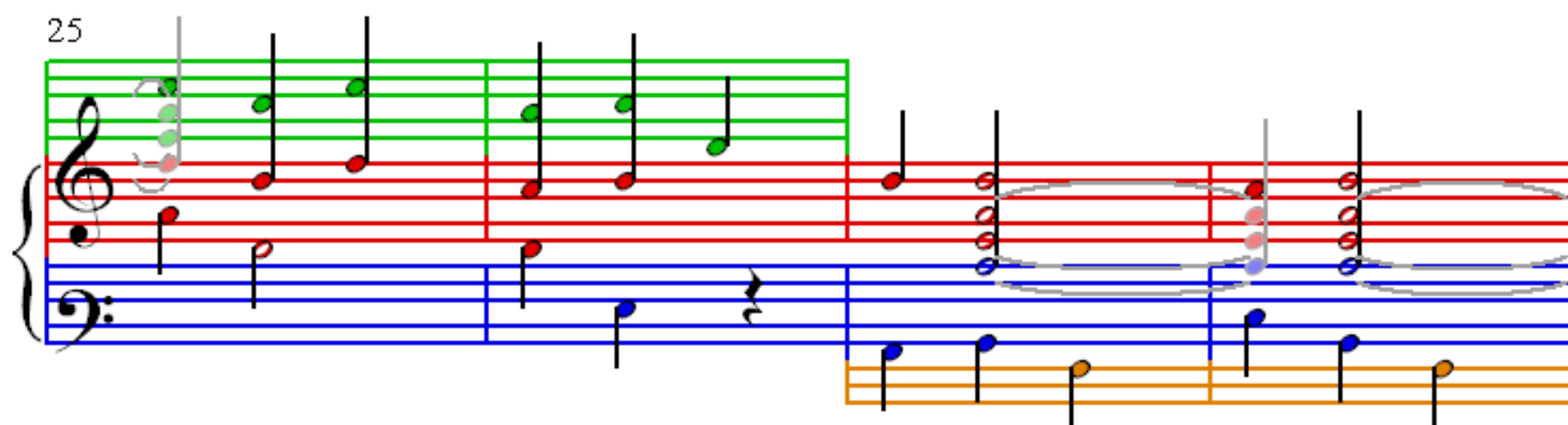
17



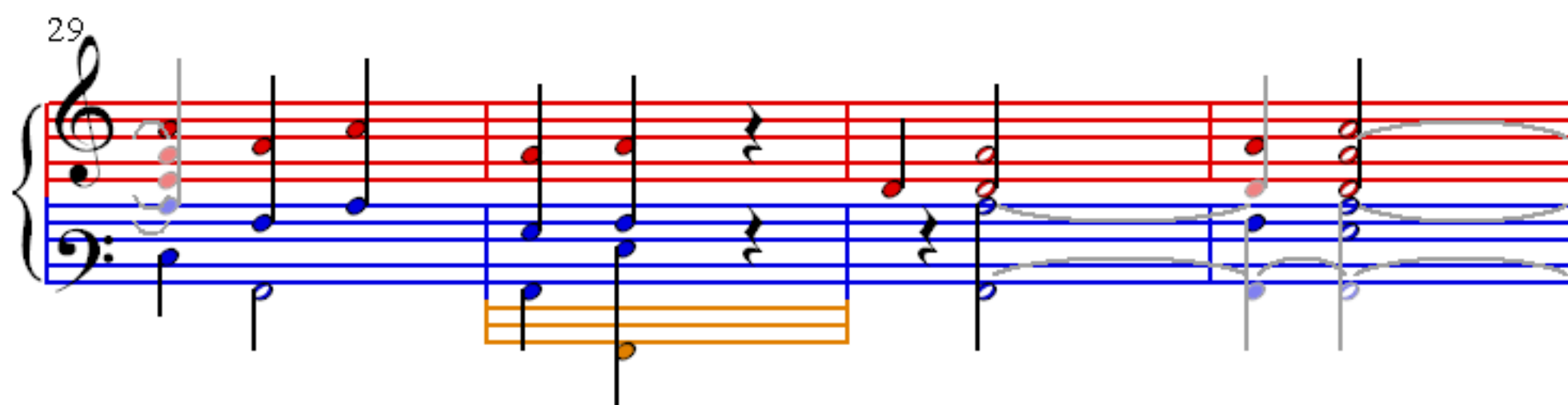
21



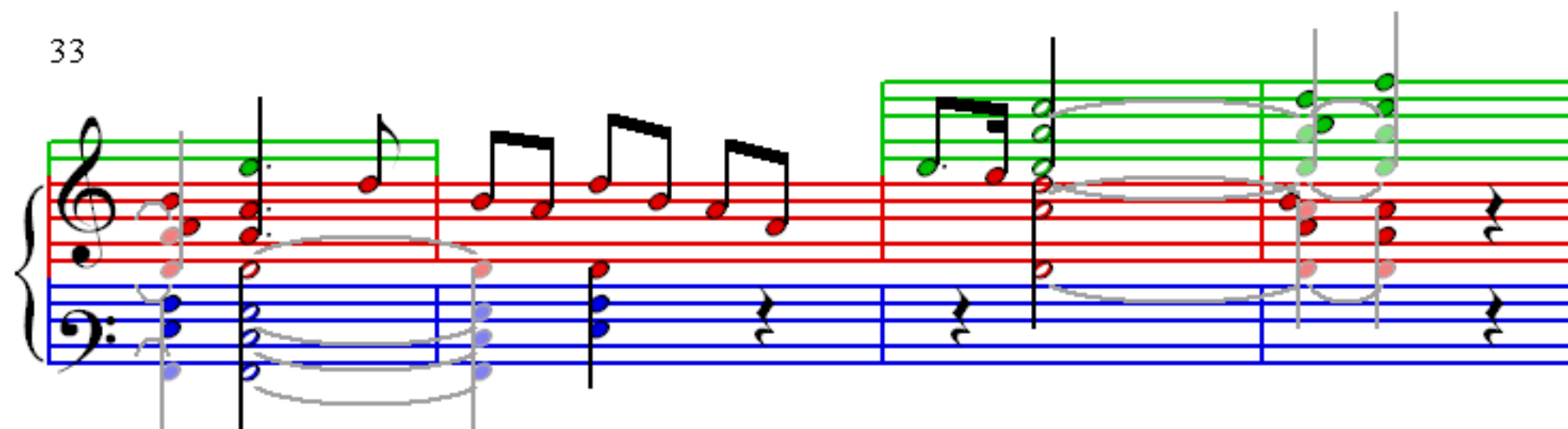
25



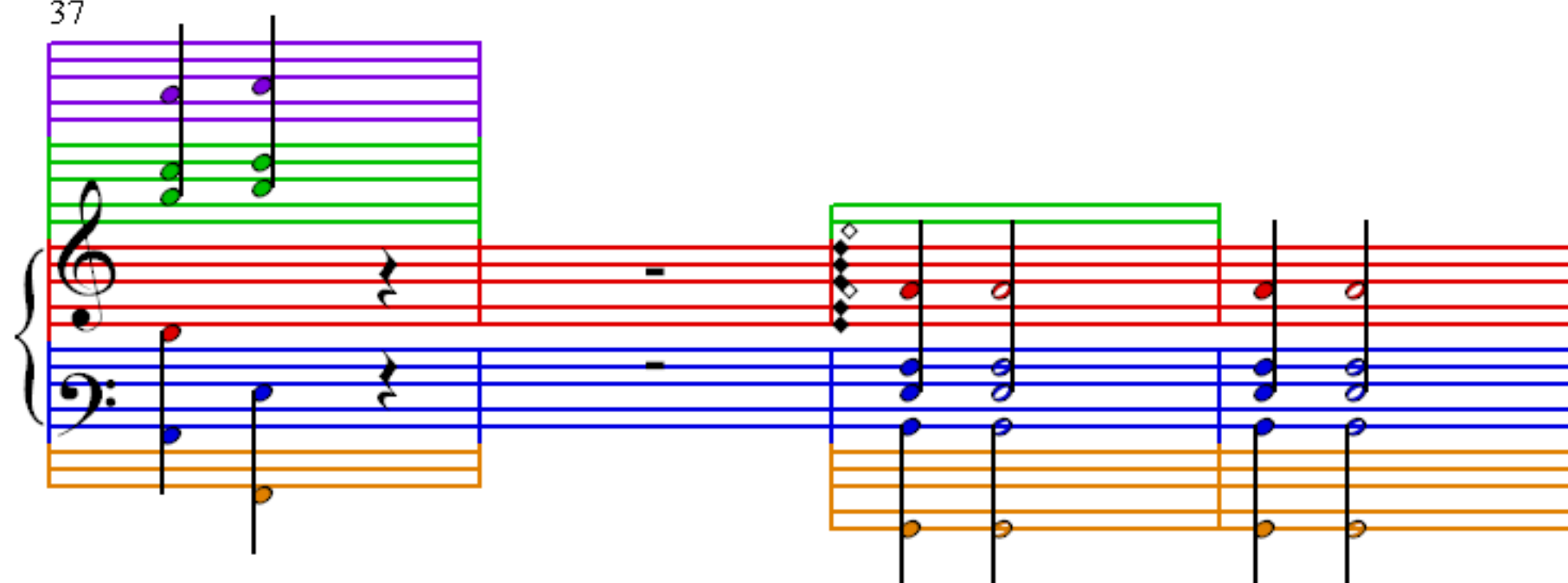
29



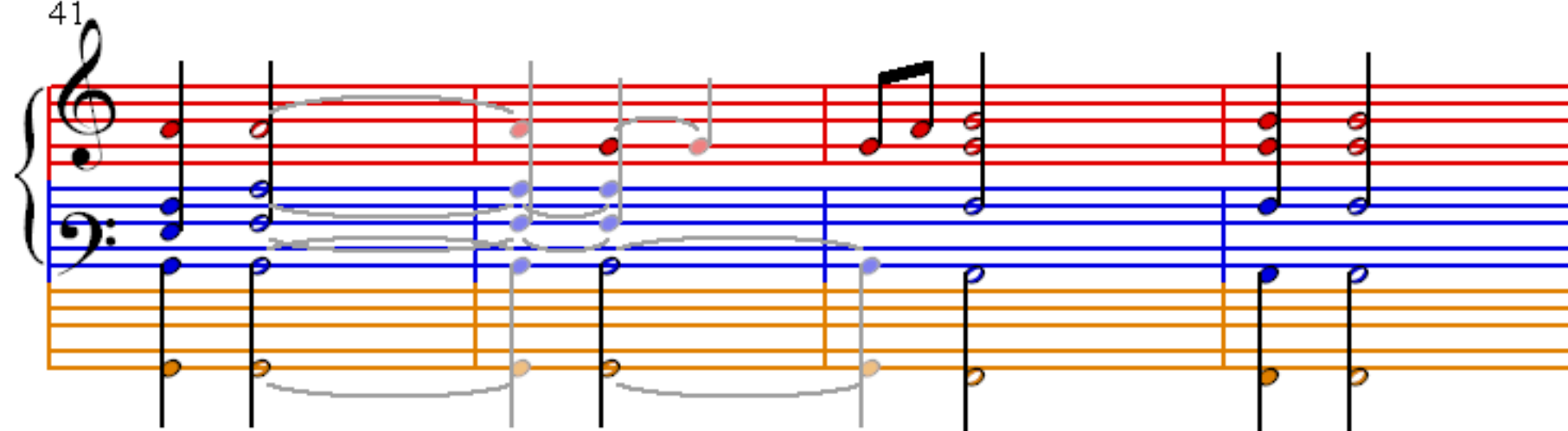
33



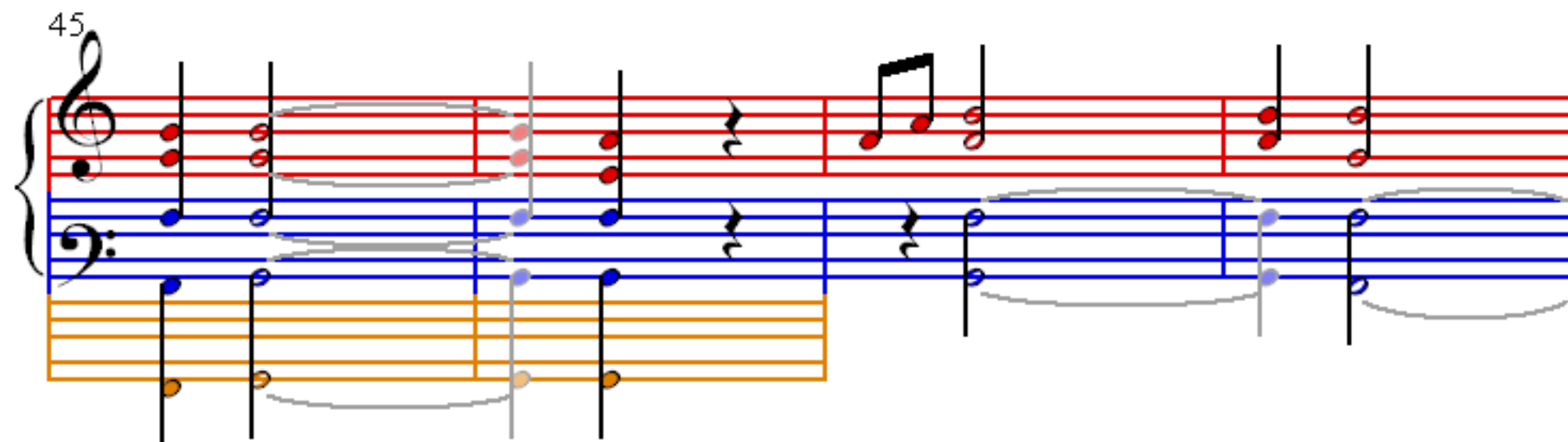
37



41



45



49

53

57

61

65

Measures 65-68. Treble clef: red notes. Bass clef: blue notes. Lower staff: orange notes. A grey oval highlights a chord in measure 65.

69

Measures 69-72. Treble clef: red notes. Bass clef: blue notes. Lower staff: orange and pink notes. A grey oval highlights a chord in measure 69.

73

Measures 73-76. Treble clef: red notes. Bass clef: blue notes. Lower staff: orange notes. A grey oval highlights a chord in measure 73.

77

Measures 77-80. Treble clef: red notes. Bass clef: blue notes. Lower staff: orange notes. A grey oval highlights a chord in measure 77.

81

85

89

93

97

101

Measures 101-104 of the musical score. The treble clef staff (red) has a whole rest in measure 101, followed by a melodic line in measures 102-104. The bass clef staff (blue) has a whole rest in measure 101, followed by a melodic line in measures 102-104. A grey oval highlights the first four measures of the bass staff.

105

Measures 105-108 of the musical score. The treble clef staff (red) has a melodic line in measures 105-108. The bass clef staff (blue) has a whole rest in measure 105, followed by a melodic line in measures 106-108. A grey oval highlights the first four measures of the treble staff.

109

Measures 109-112 of the musical score. The treble clef staff (red) has a melodic line in measures 109-112. The bass clef staff (blue) has a whole rest in measure 109, followed by a melodic line in measures 110-112. A grey oval highlights the first four measures of the treble staff.

113

Measures 113-116 of the musical score. The treble clef staff (red) has a melodic line in measures 113-116. The bass clef staff (blue) has a whole rest in measure 113, followed by a melodic line in measures 114-116. A grey oval highlights the first four measures of the treble staff.

117

Measures 117-120 of the musical score. The treble clef staff (red) has a whole rest in measure 117, followed by a melodic line in measures 118-120. The bass clef staff (blue) has a whole rest in measure 117, followed by a melodic line in measures 118-120. A grey oval highlights the first four measures of the treble staff.

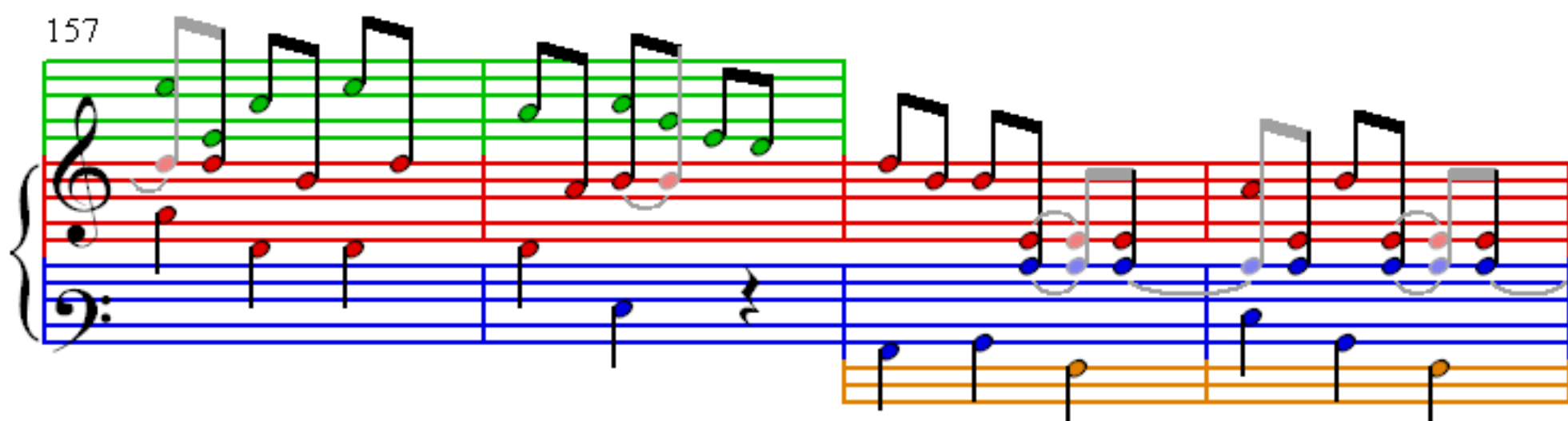
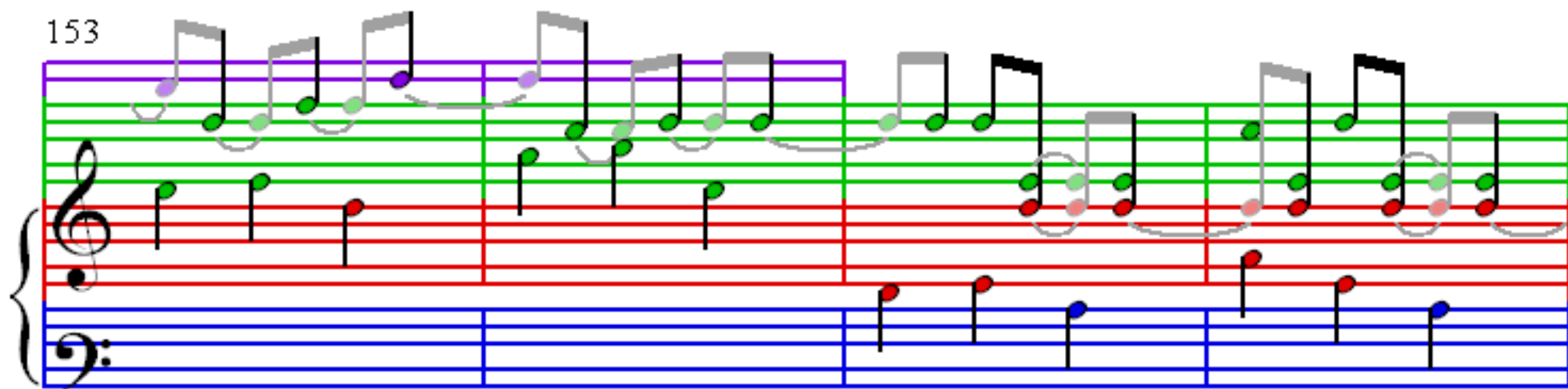
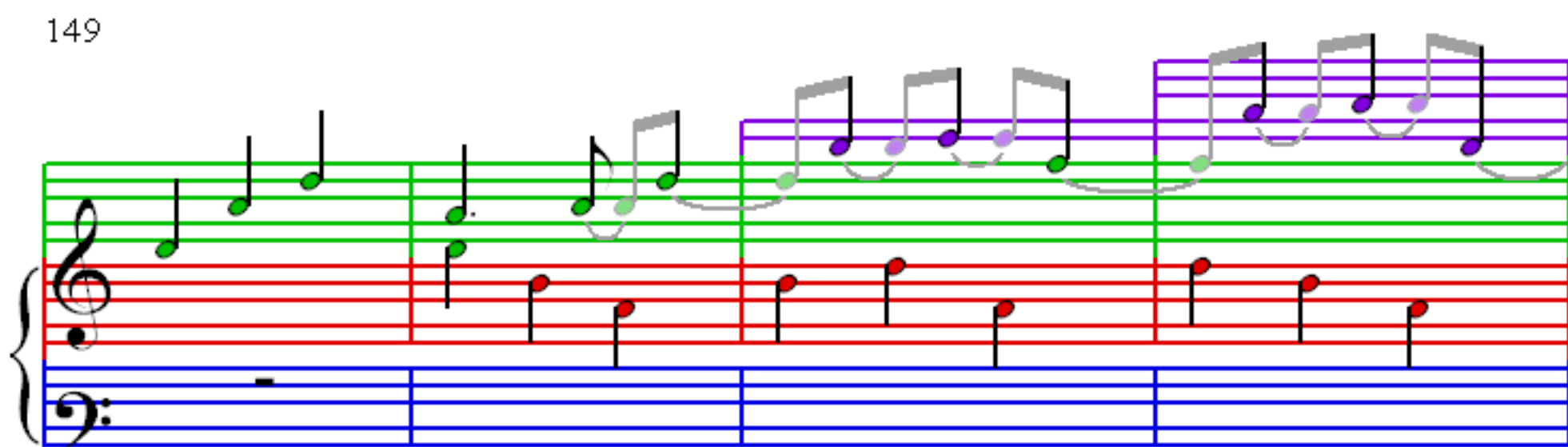
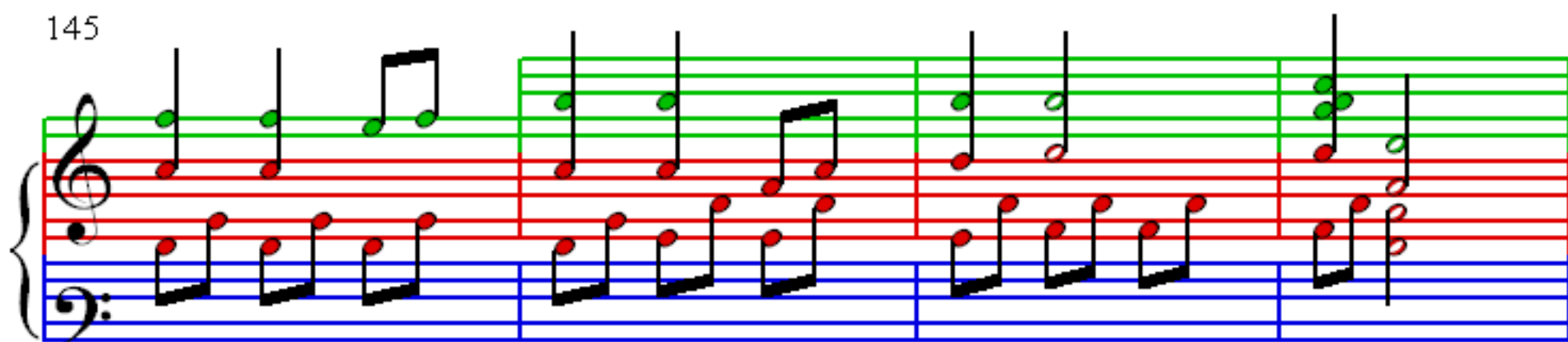
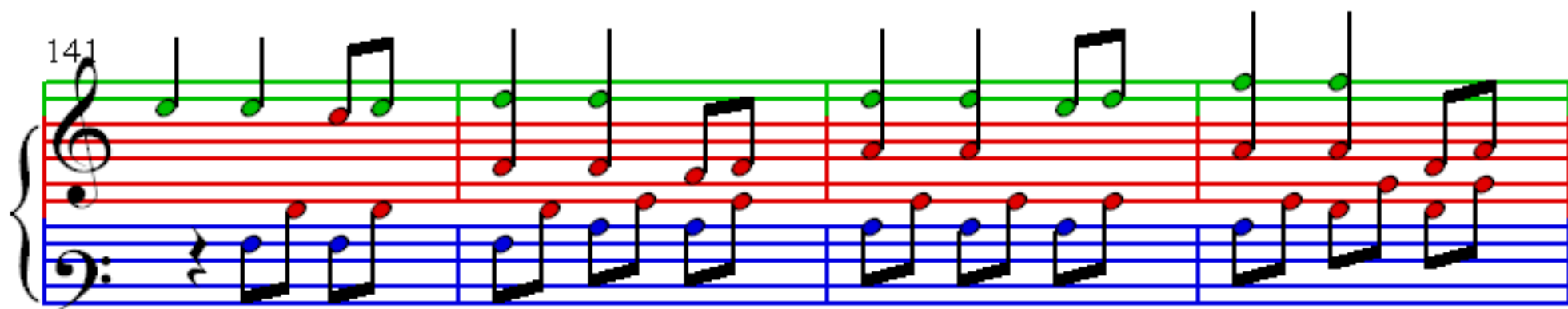
121

125

129

133

137



161

Measures 161-164. The treble clef staff has a red staff line and a blue staff line. The bass clef staff has a blue staff line and an orange staff line. The music features eighth and sixteenth notes, with some notes highlighted in red and blue. A slur is present over the final two measures.

165

Measures 165-168. The treble clef staff has a green staff line and a red staff line. The bass clef staff has a blue staff line and an orange staff line. The music features eighth and sixteenth notes, with some notes highlighted in green and red. A slur is present over the final two measures.

169

Measures 169-172. The treble clef staff has a purple staff line and a green staff line. The bass clef staff has a blue staff line and an orange staff line. The music features eighth and sixteenth notes, with some notes highlighted in purple and green. A slur is present over the final two measures.